
DRESS «BUTTERFLY» FOR GIRLS



INSTRUCTIONS
FOR SEWING

ELINA PATYKOVA
—
ПРО ШИТЬЕ



ELINA_PATYKOVA



ELINA-PATYKOVA.RU



VK.COM/ELINA_PATYKOVA



YOU WILL NEED THE FOLLOWING MATERIALS:

- woven dress fabric (for example, cotton)
- fusible interfacing
- matching threads
- button

A

Check the pattern for amount of fabric to take, according to your size. Note: if the width of the fabric differs from the one specified in the table, the length of the cut is likely to be different. Before beginning your sewing project, wash the fabric on warm, dry and iron it.

Б

Let's start the cutting.

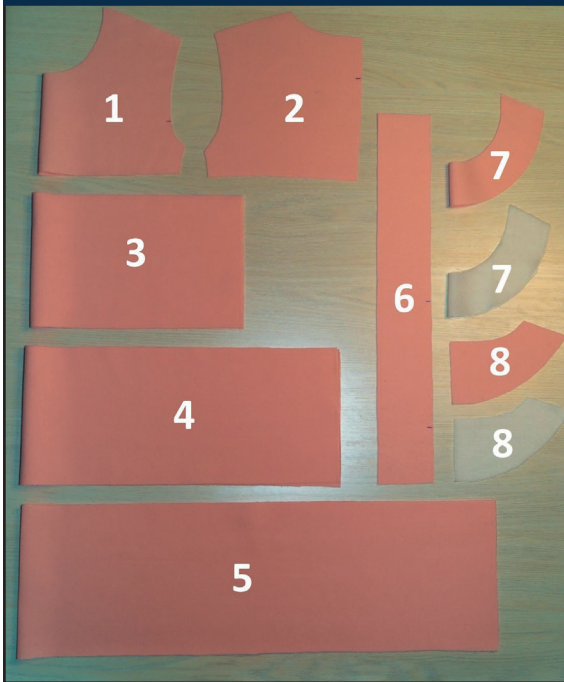
Print and glue all the paper patterns. When printing, do not forget to check the size of the test square.

B

Put the paper pattern pieces onto the fabric. It's important to check that the grain is straight. Pin the paper pattern pieces to the fabric gently and cut the fabric along them. Note: seam allowance is included. Transfer any necessary marks from the pattern onto the wrong side of your fabric. Cut the pieces from the fusible interfacing in the same way.

NOW YOU HAVE ALL THE PEACES:

OF THE DRESS:



- ① front – cut 1 on the fold,
- ② back - cut 2,
- ③ top tier - cut 2 on the fold,
- ④ middle tier- cut 2 on the fold,
- ⑤ bottom tier - cut 2 on the fold,
- ⑥ ruffles- cut 2,
- ⑦ front facing - cut 1 on the fold and a piece from the fusible interfacing cut 1 on the fold,
- ⑧ back facing - cut 2 and 2 pieces from the fusible interfacing



You should press the fusible interfacing on the facing pieces. Press the interfacing pieces over the complete facing.

NOW WE CAN START SEWING

DRESS MAKING

1



I decided to decorate the dress with a sequin appliqué. It will be inconvenient to attach the appliqué, when the dress is ready. Therefore, if you also want to add something, I recommend you to do it at the very beginning. I took a ready-made sequin appliqué, fixed it with glue-pencil and stitched it along the edges. The extra mesh base was cut close to the line.

2



Finish the shoulder, side and center back edges with the 3-thread serger stitch, or, if you don't have a serger, use a zig-zag stitch. Press the finished edges.

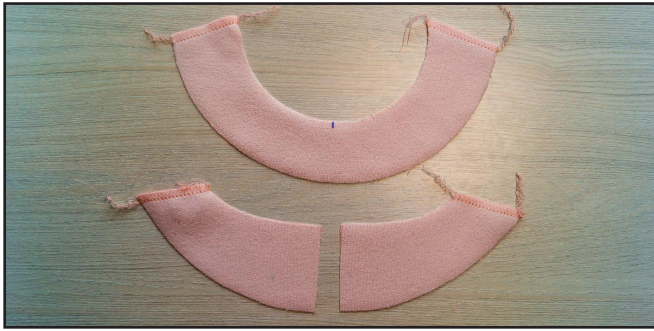
3



Baste or pin the front and the back along the side seam lines right sides together. If you are a beginner, I advise you to baste, but not pin. Stitch the seams 1cm (0.39") in from the edge. Press the seam allowances open.

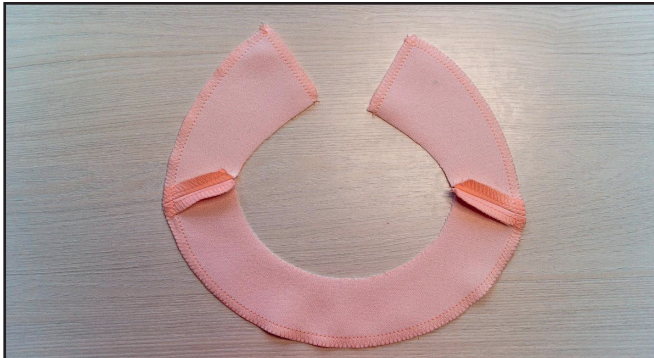
4

4



Finish the facing raw shoulder edges with the serger or a zig-zag stitch. Press the finished edges.

5



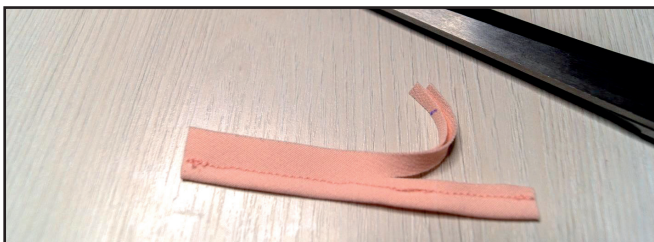
Pin the front neck facing and the back neck facing pieces along the shoulder seam lines with the right sides together. Sew the facing shoulder seams 1 cm (0.39") in from the edge. Press the seam allowances open. Finish the outer and the center edges with the serger or a zig-zag stitch. Press the facing.

6



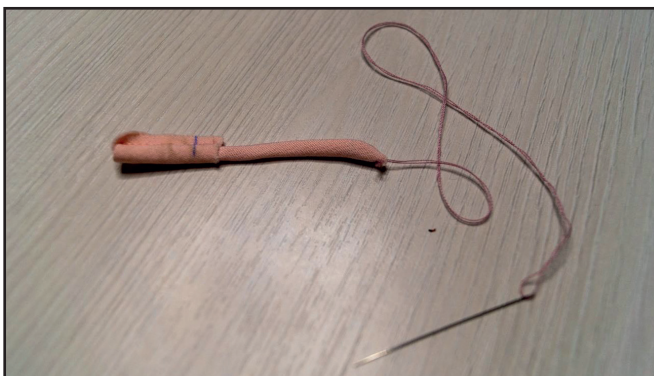
Now we are to make a rouleau loop for the button. To do it cut a strip of the fabric at a 45 degree angle to the straight grain. Make the strip 2.5 cm (1") wide by 8 cm (4") long. Fold the strip lengthwise, right sides together. Stitch the long raw edges together 4-5 mm (0.2") in from the fold with a short stitch length not more than at 1.8 mm (0.07").

7



Trim the seam allowances close to the seam line.

8



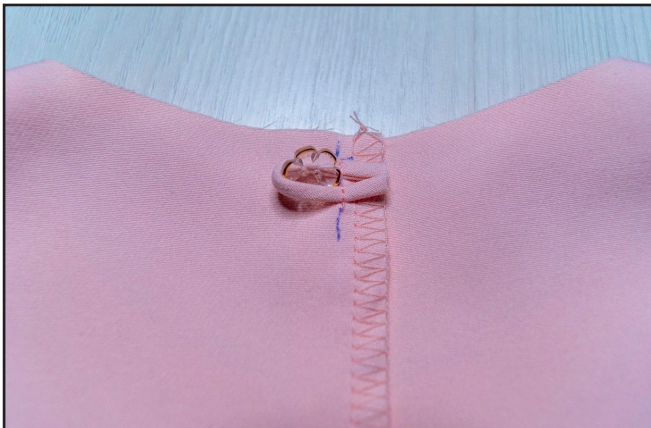
Since the workpiece for the loop is very narrow, you won't be able to turn the fabric tube right sides out with a pin or a hook. I do it with a thread and a needle. I tie the thread tail at the end of my stitching and first pass the needle eye through the tube, then begin pulling the thread carefully turning the entire tube right sides out.

9



Mark the lines of attaching the back neck facing on the left back piece. Pin the loop as it is shown in the picture. The loop size should fit the button size.

10



Stitch the loop ends just to the line. Check the size of the loop against the button itself.

11



Baste or pin the facing to the bodice neckline, right sides together. Align the shoulder seams and the folds. Stitch the facing in place 7 mm (0,28") in from the edge and 10 mm (0.39") from the back center edge. Stitch it from one mark at the end of the cut to another. Note: align the seam to the seam of the loop and care the loop itself did not get into the seam.

12



Reduce the facing seam allowance by half. Trim across the corners of the seam allowance and slash all over the neckline edge. Turn the facing to the right side.

13



Press the seam allowance towards the facing. Stitch the facing 1 mm (0,03") in from the seam. Begin and end stitching 2-3 cm (0.8 - 1.2") from the central seam and as close to the seam as the foot of the sewing machine will allow. Press the facing towards the wrong side of the back forming a roll.

14



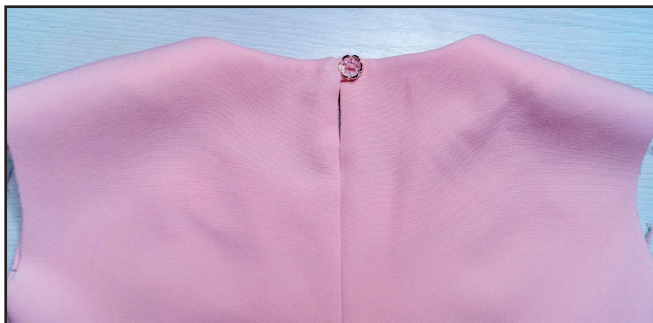
Baste or pin the center seam line of the back and stitch it 1cm (0.39") in from the edge. Stitch it up to the beginning mark of the back opening. Press the seam open.

15



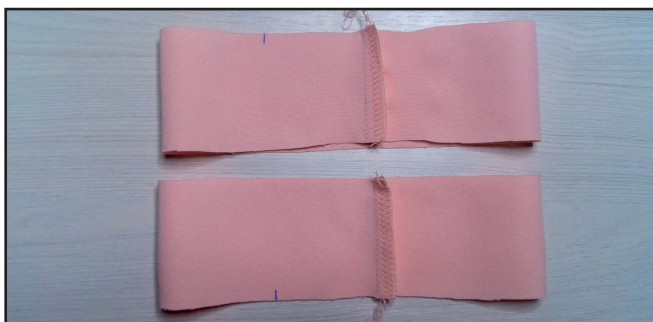
In the same way, stitch the facing short sides along the center seam up to the end mark of the back opening. Press the seam open.

16



To avoid twisting the facing up, you should hand-stitch it to the shoulder seams. Press again the bodice neckline, the back neck opening and the center back seam. Sew on the button.

17



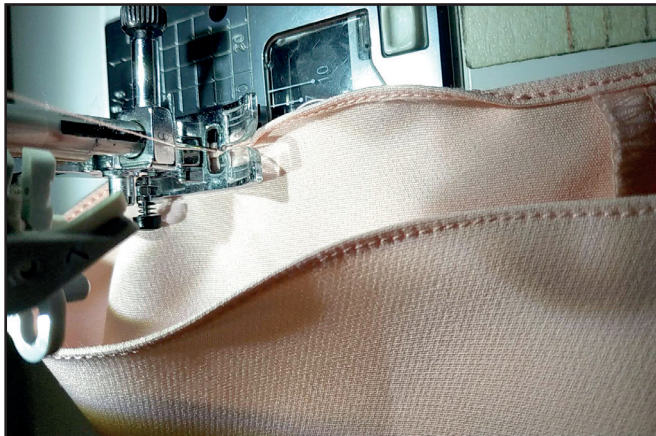
Stitch the short ends of the ruffles forming a circle 1 cm in from the edge, finish the seam allowances with the serger or a zig-zag. Press the seam allowances towards the back.

18



Fold the ruffle outer edge 3 - 4 mm (0,12 - 0.16") to the wrong side and stitch the edge 1mm (0.04") in from the fold. Trim the seam allowance as close to the seam as possible.

19



Fold the ruffle edge once again and do it as narrow as possible. Sew it with the strait stitch as close as possible to the previous seam. Press the ruffle edge.

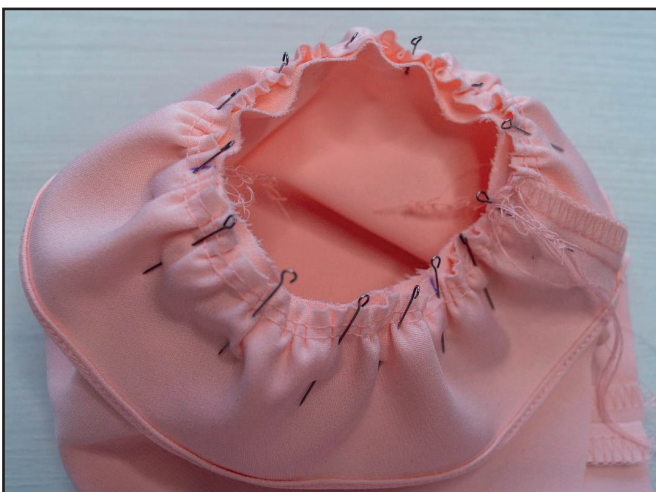
20



Sew two parallel seams 6 mm (0,24") and 4 mm (0.16") in from the edge. Set the maximum stitch length at 4 - 5 mm (1.6- 2"), do not backstitch and leave the thread tails at least 3 cm (1.2") long at the both sides of the seams. Pull the upper threads to gather the ruffle

to the length specified in the pattern. Tie the thread tails.

21



Baste or pin the ruffle to the bodice armhole, right sides together. Align all the marks and the ruffle seam with the bodice side seam and the centre of the ruffle with the shoulder seam. Distribute the gathers so that the folds are formed evenly.

22



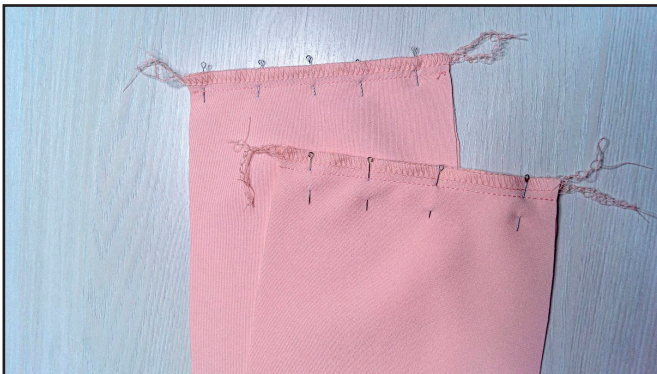
Sew the ruffle to the garment 1.5 cm (0.5") in from the edge. Finish the seams together with the serger or zig-zag stitch. Press the seam allowances towards the bodice.

23



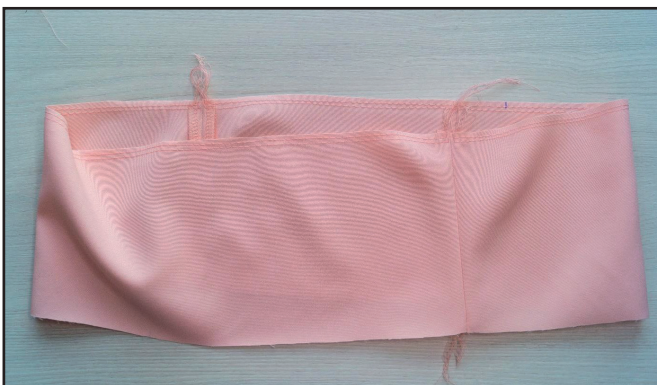
Stitch along the armhole 1 mm (0,2") in from the seam. Press the seam again. Repeat the steps with the other ruffle.

24



Finish the top tier side edges with the serger or zig-zag stitch. Baste or pin the side edges right sides together. Stitch them 1 cm (0.4") from the edge. Press the seam allowances open.

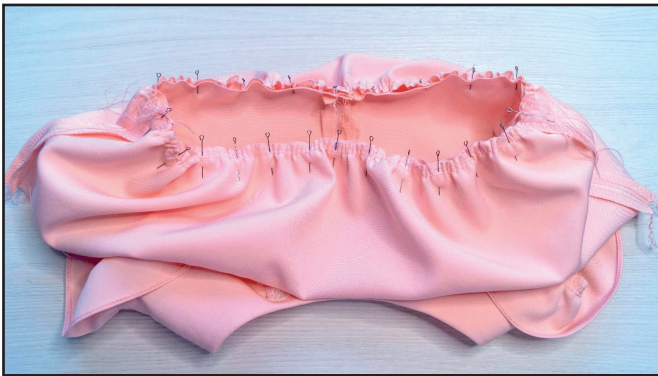
25



First sew two parallel seams 6 mm (0,24") and 4 mm (0.16") in from the first half of the top tier long edge, then do the same with the second half. Set the maximum stitch length at 4 - 5 mm (1.6 - 2"), do not backstitch and leave the thread tails at least 3 cm (1.2") long at the both sides of the seams. Pulling the tails of the upper threads, gather the top tier of the skirt to the length

indicated on the pattern. Tie the thread tails.

26



Baste or pin the top tier of the skirt to the bodice lower edge right sides together. Align the side seams and the pieces center marks. Distribute the gathers so that the folds are formed evenly.

27



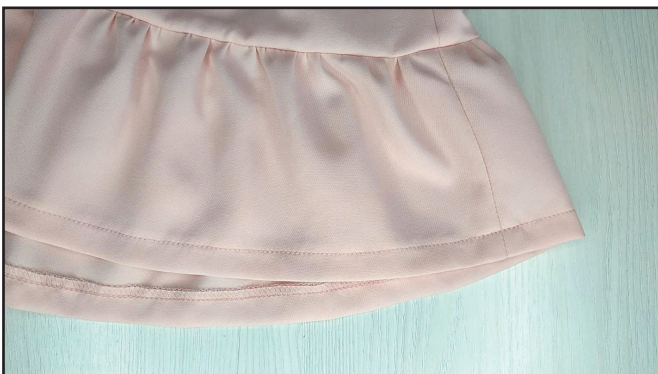
Stitch the skirt top tier to the bodice 1cm (1.4") from the edge. Finish the seams together with the serger or zig-zag stitch. Press the seam allowances towards the bodice.

28



Do the same steps with the skirt middle and bottom tiers.

29



Finish the dress lower hem with the serger or a zig-zag stitch. Fold the hem 2 cm (0.8") up to the wrong side. Stitch the lower hem 1.5 cm (0.6") with the straight stitch. Give the hem a final pressing.

30



Remove the basting stitches, trim the thread tails and press once again. The dress is ready!

ELINA PATYKOVA

ПРО ШИТЬЕ

**THANK YOU FOR JOINING MY TEAM AND ME!
SHARE YOUR WORKS IN INSTAGRAM AND MY
GROUP IN VKONTAKTE. HOPE YOU WILL STAY
WITH US FOR OUR NEXT PROJECT!**