

# SHIRT «CITY» FOR GIRLS



## INSTRUCTIONS FOR SEWING

ELINA PATYKOVA  
—  
ПРО ШИТЬЕ



ELINA\_PATYKOVA



ELINA-PATYKOVA.RU



VK.COM/ELINA\_PATYKOVA



## TO SEW THE SHIRT YOU NEED :

- french terry or jersey,
- fusible interfacing for stretchy fabric,
- Alfa snap buttons 12.5 mm (0.5») 8 pcs.,
- matching threads,
- kantenband.

**A**

Check the pattern for amount of fabric to take, according to your size. Note: if the width of the fabric differs from the one specified in the table, the length of the cut is likely to be different. Before beginning your sewing project, wash the fabric on warm, dry and iron it.

**B**

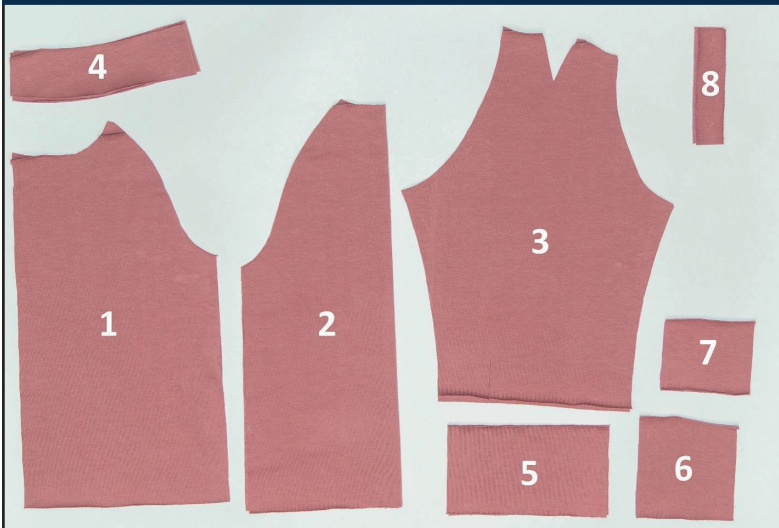
Let's start the cutting. Print and glue all the paper patterns. When printing, do not forget to check the size of the test square.

**C**

Put the paper pattern pieces onto the fabric. It's important to check that the grain is straight. Pin the paper pattern pieces to the fabric gently and cut the fabric along them. Note: seam allowance is included. Transfer any necessary marks from the pattern onto the wrong side of your fabric.

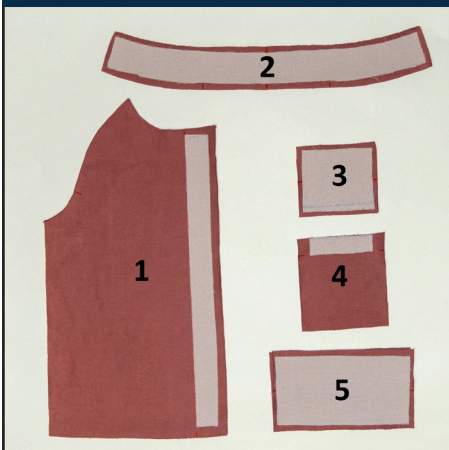
## NOW YOU HAVE ALL THE PEACES:

### SHIRT PIECES:



- ① front – cut 2
- ② back - cut 1 on the fold
- ③ sleeve - cut 2
- ④ stand collar - cut 2 on the fold
- ⑤ cuff - cut 2
- ⑥ pocket - cut 1
- ⑦ pocket flap - cut 1
- ⑧ sleeve placket - cut 2

### YOU SHOULD REINFORCE SOME PARTS WITH THE FUSIBLE INTERFACING:



- ① front placket - cut 2
- ② under collar - cut 1 on the fold
- ③ pocket flap - cut 1
- ④ pocket top edge fold
- ⑤ cuff - cut 2

.....  
Cut the interfacing parts with 2 mm (0.08») seam allowances only,  
not to make the seams too thick.

Reinforce the pocket side and low edges with kantenband  
to avoid seams stretching.



## NOW WE CAN START SEWING



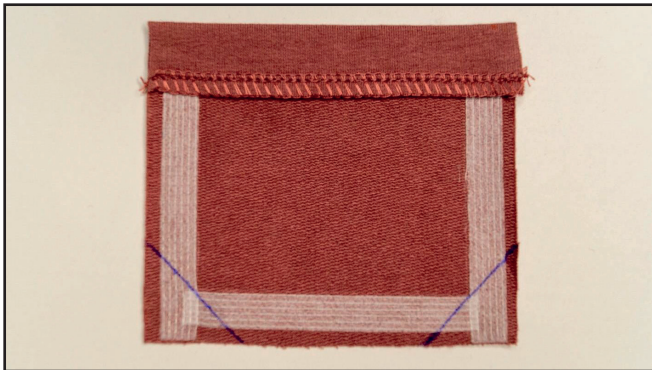
# SHIRT TAILORING

1



Finish the top edge of the pocket with a serger and press 2 cm (0.8") of it to the wrong side. Topstitch the upper hem down 1,5 cm (0.6") from the edge. Press the pocket.

2



Draw two lines at 45° to the pocket corners on the wrong side, as it is shown on the photo. The lines should go exactly through the ready pocket corners.

3



Fold the pocket bottom corners at 45° and pin them. Stitch along the marked lines.

## NOTE

If you do not have a serger, you can use stretch stitches available on your sewing machine, or at least, zigzag stitch. If you do not have a coverstitch machine, the flat seam can be performed with: a) a twin needle on a sewing machine, b) decorative stretch seam on a sewing machine, c) finish the seams with serger and stitch them with straight stitch.



4



Trim the corners and seam allowances 3 mm (0.12") from the seam.

5



Turn out the corners, form a pocket. Press the pocket edges 1,5 cm (0.6") to the wrong side. For convenience, you can also baste the allowances. I use the Erich Krause stationery glue pencil, it securely fixes the seam allowances, easily washes off at the first wash, leaving no trace. You can use special pencil glues for textiles, such as PRYM. The pocket is now ready to attach.

6



Mark the position of the pocket on the right side of the left front.

7



Pin or baste the pocket to the garment or glue it, as I do.

8



Topstitch the pocket in place about 5 mm (0,2") from the fold. Backstitch at the pocket top corners to secure them. Press the pocket. Mark the position of the pocket flap 8 mm (0.3") from the pocket opening.

9



Fold the pocket flap in half. Pin the side edges and then serge them. Tie the thread tails. Turn the flap out to the right side and press it.

10



Pin the flap open edge to the marked line. Mark the seam line 0.7 cm (0,28") from the edge. Stitch the flap in place.

11



Trim the pocket seam allowance close to the seam. Press the flap into place.



12



Topstitch the pocket flap 5 mm (0.2") from the seam.

13



Press the fronts plackets to the wrong side along the marked lines: first 1 cm (0.4"), and then 2.8 cm (1.1").

14



If you didn't do it during the cutting, cut the sleeve along the slit line, indicated on the pattern. Open the slit to make a straight line. Pin, slightly stretching, the sleeve plackets to the sleeve slit, with the right sides together. Place the slit top 5 - 6 mm (0.2 - 0.24") below the placket edge. Note: the placket pattern is made a bit bigger. Stitch

the placket in place 7 mm (0.28") from the edge. Begin stitching from the sleeve, making sure that no creases are formed. Press the seam allowance towards the placket.

15



Trim away excess fabric from the placket. Wrap the placket, edge turned under, to the wrong side around the seam allowance. Hand-stitch it so that the placket will extend above the seam.



16



Stitch it on the right side 1mm (0.04") from the fold. Make sure that the placket is stitched on the wrong side as evenly as on the right side. Remove the basting stitches and press.

17



Fold the sleeve slit in half right sides together and stitch a diagonal seam, like a dart, at the slit top.

18



Turn the placket of the front slit edge inside (the edge is further than the side sleeve edge), press and topstitch it 5 mm (0.2") from the lower edge. Press the placket of the slit back edge. The edge also becomes an extension for the fastener. At the marked place fold and pin a tuck in the slit direction. Stitch the tuck in place 5 mm (0.2") from the edge. Do the same with the opposite slit (steps 14 - 18).





19



Pin the sleeves shoulder darts. Stitch them with a 4-thread serger stitch. Begin stitching from the neckline and make a smooth, convex curve. Tie the thread tails at the end of the seam. Press the seam allowances flat towards the front part.

20



Pin the sleeves to the back with right sides together. Use the serger to stitch them to the garment. Press the seams flat towards the back.

21



Pin the fronts to the sleeves with right sides together. Use the serger to stitch them to the garment. Press the seams flat towards the fronts.

22



Pin the side seam of the shirt and the sleeve with right sides together. Stitch the seams with a 4-thread serger stitch. Press the seam allowances flat towards the front. Do the same steps with the opposite side seam and the sleeve.

23



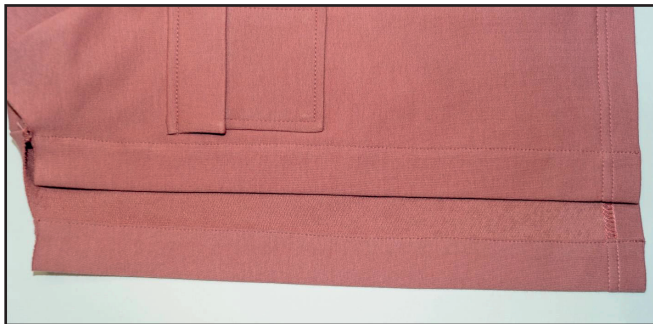
Along the shirt lower hem, on the wrong side, draw a parallel to the edge line, 4 mm (0.16") from the edge. Fold the lower hem 2 cm (0.8") up to the wrong side, matching the raw edge with the drawn line, then press it. Pin, baste or glue the edge.

24



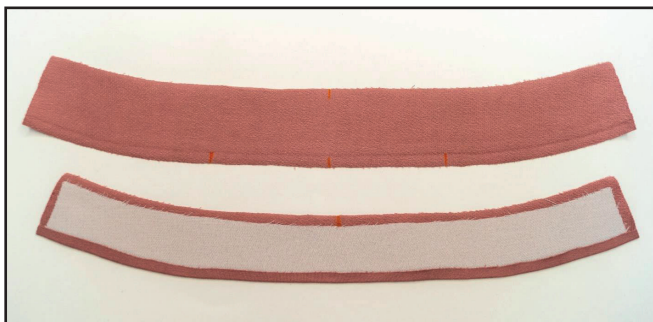
Finish the lower hem with the coverstitch machine, tie the seam thread tails and hide them. Press the hem seam and the plackets edges.

25



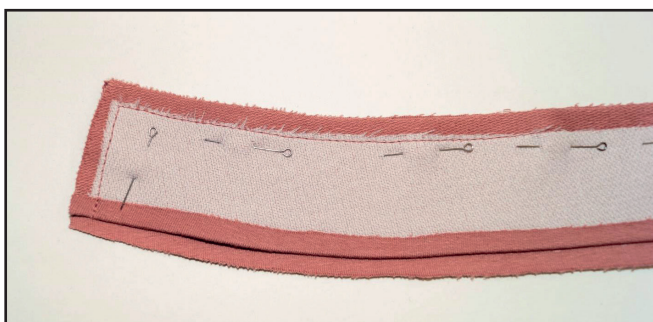
Pin the plackets and topstitch them on the wrong side 1mm (0.04") from the edge. Press the seams.

26



Press the seam allowance of the interfaced under collar 7 mm (0.28") to the wrong side.

27



Pin the upper and under collars right sides together. Stitch along the top and side edges 7 mm (0.28") from the edge.

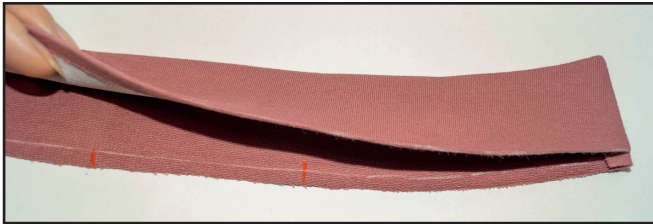


28



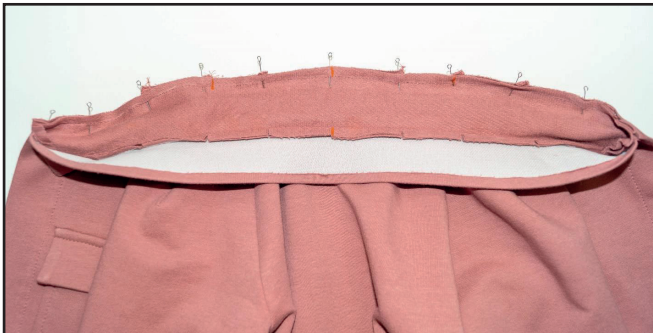
Trim the seam allowances of the corners and slash over the upper edge. Turn the collar out and press it towards the wrong side, forming a roll.

29



Draw a line along the inside collar lower edge and on the outer collar part.

30



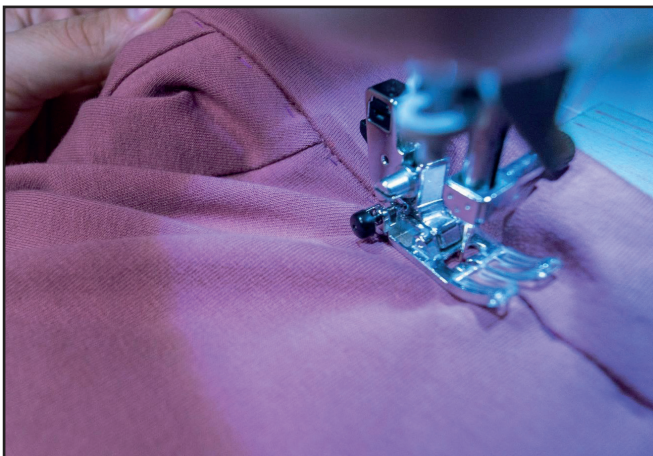
Pin the upper collar to the shirt neckline, right sides together, aligning the center marks and the shoulder mark with the dart. Stitch the parts along the collar a bit to the left from the drawn line.

31



Slash over the neckline. Press the seam allowances towards the collar.

32



Place the under collar over the seam line. Hand-baste it in place around the neckline. Topstitch on the garment right side, sewing exactly along the seam of attaching collar to the neckline. Under collar edge should be exactly in the seam. If this step seems difficult, you can sew inside collar part with the blind hand stitch.

33



Remove the basting stitches and press the stand collar.

34



Pin the cuff to the sleeve end, with right sides together. Stitch it 7 mm (0.28") from the edge. Press the seam allowances towards the cuff.

35



Fold the cuff in half, right sides together. Pin the short side edges, turning the seam allowances under to the wrong side. Stitch the cuff short edges 7 mm (0.28") from the edge.

36



Trim the seam allowances corners. Turn the cuff out and press it.

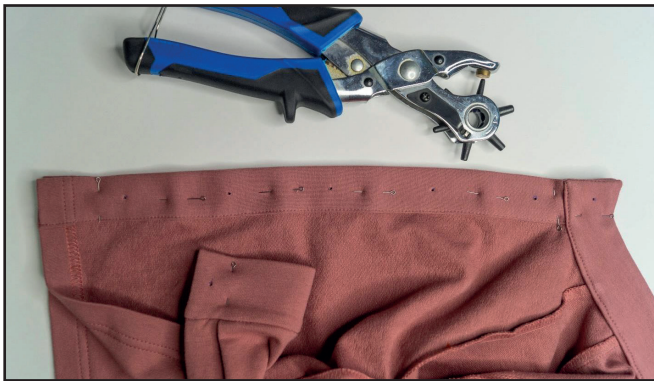


37



Place the folded edge over the seam line. Then hand-baste along the foldline. Topstitch on the shirt right side, sewing exactly along the seam of attaching the cuff to the sleeve end. Another cuff edge should be exactly in the seam. If this step seems difficult, you can sew the edge with the blind hand stitch. Remove the basting stitches and press the cuff. Repeat the same steps with the opposite cuff (steps 34 - 37).

38



Transfer the marks for the snap buttons from the pattern. Align and pin both plackets, as well as both cuffs edges, so that the opposite parts of the buttons are located symmetrically. Punch 2 mm (0.08") holes with a Hole Punch.

39



Attach the snap buttons with a Snap Press, a Snap Setter or a Hammer Tool.

40



Remove the basting stitches, trim and hide the thread tails and press the garment once again. The shirt is ready!



ELINA PATYKOVA

ПРО ШИТЬЕ

**THANK YOU FOR JOINING MY TEAM AND ME!  
SHARE YOUR WORKS IN INSTAGRAM AND MY  
GROUP IN VKONTAKTE. HOPE YOU WILL STAY  
WITH US FOR OUR NEXT PROJECT!**