

JACKET LUXURY FOR WOMEN

SKILL LEVEL



INSTRUCTIONS FOR SEWING

ELINA PATYKOVA

ПРО ШИТЬЕ



ELINA_PATYKOVA



ELINA-PATYKOVA.RU



VK.COM/ELINA_PATYKOVA



YOU WILL NEED THE FOLLOWING MATERIALS:

- double-sided quilted fabric with insulation,
- open-ended zipper,
- invisible zippers 18-20 cm (7,09 - 7,87") 2 pcs,
- satin bias binding,
- elastic edging ribbon,
- matching upper and lower layers fabrics threads,
- Microtex 70-80 needles.

A

Check the pattern for amount of fabric, bias binding, elastic edging ribbon and the zipper length to take, according to your size. Note: if the width of the fabric differs from the one specified in the table, the length of the cut is likely to be different.

B

Let us start the cutting. Print and glue all the paper patterns. When printing, do not forget to check the size of the test square.

C

Put the paper pattern pieces onto the fabric. It's important to check that the grain is straight. Pin the paper pattern pieces to the fabric gently and cut the fabric along the outline. It is better to cut each piece from quilted fabric separately to get symmetrical quilted lines on the opposite pieces. First cut one piece, then place it on the fabric with right sides together aligning the quilted lines and then cut the opposite piece. Note: seam allowance is included. Transfer any necessary marks from the pattern onto the wrong side of your fabric.

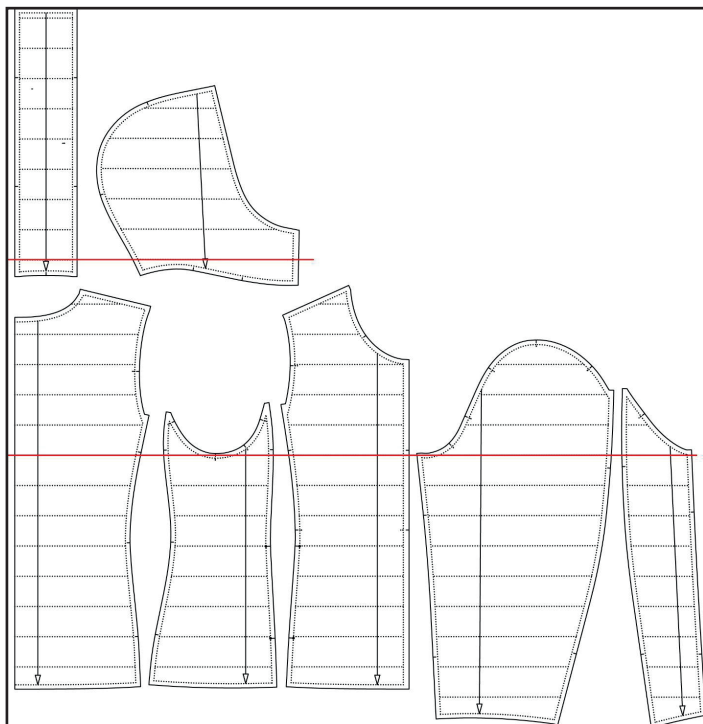
NOW YOU HAVE ALL THE PEACES:

JACKET PIECES:



- ① front – cut 2
- ② side piece - cut 2
- ③ back - cut 1 on the fold
- ④ sleeve front - cut 2
- ⑤ sleeve back - cut 2
- ⑥ hood side piece cut 2
- ⑦ hood center piece cut 1
- ⑧ wind flap - cut 1
- ⑨ pocket lining- cut 4

Unstitch the quilted lines on pieces 8 and 9 after the cutting. Use the left after cutting fabric pieces to choose the necessary temperature and then press the jacket pieces. Place the patterns to the pressed pieces and, if it is necessary, shape the pieces. Leave the upper layer for the wind flip and, also, cut the insulation in halves along the long edges and leave one half. Leave 2 pocket pieces from the fabric upper layer and 4 pieces from the fabric lower layer.



The stitch width may not coincide with the marking on the pattern, in this case, we align the line that runs on the fronts underarms, side pieces, back, sleeves upper and lower pieces, with one of the quilted lines, but it will be lower line on the hood pieces. While cutting, check the quilted lines to be aligned on the pieces and then stitch them.

NOW WE CAN START SEWING

SYMBOLS:



straight stitch



the stitch length in (in)



flat lock stitch



zigzag stitch



the stitch width in (in)



3-Step Zigzag Seam Finishing



unilateral zipper foot



universal presser foot



invisible presser foot



pinning

You should lockstitch the seam and trim the thread tails or tie the seam thread tails and hide them into the seam after sewing a serger stitch or cover seaming chain stitch.



3-thread serger stitch



4-thread serger stitch

NOTE:

A

4-thread serger stitch

If you do not have a serger, you can use stretch stitches available on your sewing machine, or at least, a zigzag stitch.

B

3-thread serger stitch

If you do not have a serger, you can replace it with an overedge stitch, or a zigzag stitch.

C

flat lock stitch

If you do not have a coverstitch machine, the flat seam can be performed with a) a twin needle on a sewing machine, b) decorative stretch seam on a sewing machine, c) finish the seams with serger and stitch them with a straight stitch.

SEWING GUIDE

1



Stitch along the outline of all the pieces, except the wind flap and the pocket linings, 3 mm (0.12") from the edge.

2



Pin the pocket lining pieces from the upper and lower layers of the jacket fabric. Stitch them along the outline (0.12") from the edge.

3



Baste one invisible zipper tape to the jacket front with right sides together. Align the zipper top stop with the pocket opening upper mark. Baste the zipper so that its teeth are 8 mm (0.31") from the edge. Mark the place for the pocket opening on the zipper.

4



Stitch one zipper tape to the front part with an invisible zipper presser foot exactly between the marks. Use the threads, matching the jacket upper layer fabric.

5

5



Mark the quilted lines on the zipper.

6



Fasten the zipper. Transfer the marks of quilted lines and the marks of the pocket opening from one zipper tape to the opposite one.

7



0.071 - 0.087"

Baste the zipper opposite tape to the side piece, aligning the marks. Stitch the zipper to the side piece. Use the threads, matching the jacket upper layer fabric.

8



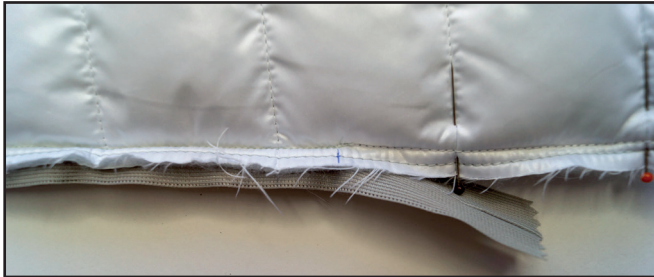
Fasten the zipper. Make sure that it is easy to fasten, that the quilted lines and the pocket opening marks coincide.

9



Pin the front princess seam above and below the zipper. Pin along each quilted line, aligning them very precisely.

10



Stitch the princess seam 8 mm (0.31") from the edge above and below the invisible zipper. Stitch the seams exactly up to the pocket opening. Use the threads, matching the jacket wrong side.

11



Make sure that there are no creases, and the quilted lines coincide.

12



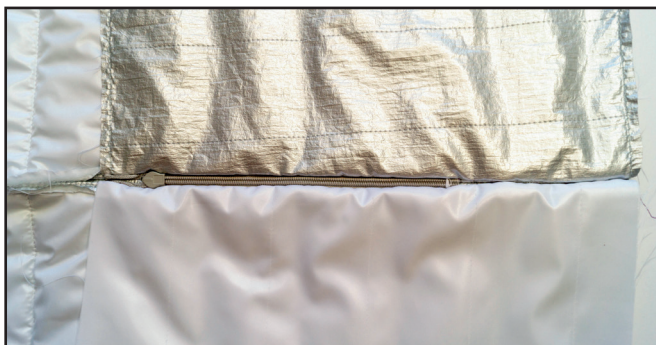
Hand-baste or use a zigzag stitch to sew the zipper as close to the pocket opening as possible. Trim the excess zipper extension.

13



Baste the pocket lining bag to the side piece seam allowance with right side to the zipper, aligning the marks. Stitch the pocket bag as close to the princess seam and the zipper as possible with unilateral zipper foot. Use the threads, matching the jacket wrong side. If the slider prevents you from finishing the seam, then place the machine needle in the work, raise the zipper foot, move the zipper slider and sew on.

14



0.071 - 0.087"

With right sides together, hand-baste the pocket bag, cut from the lower jacket fabric layer, to the front piece seam allowance, aligning the marks. Stitch the pocket bag as close to the princess seam and the zipper as possible with unilateral zipper foot. Use the threads, matching the jacket wrong side.

15



Trim the excess long zipper edge along the seam allowance.

16



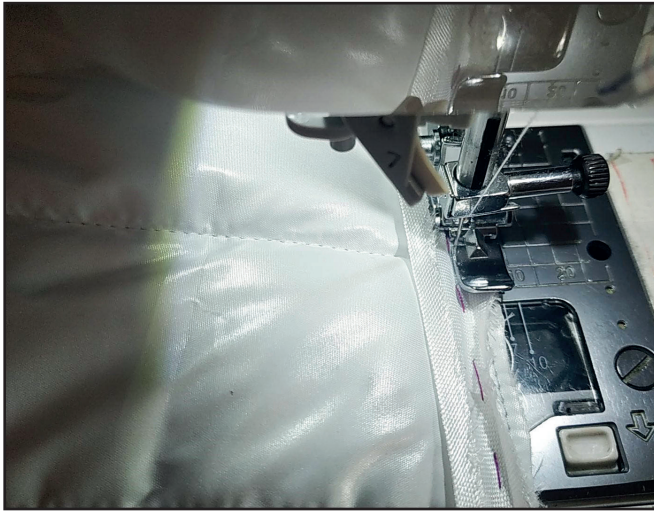
Slash the front piece seam allowance close to the pocket lining edge.

17



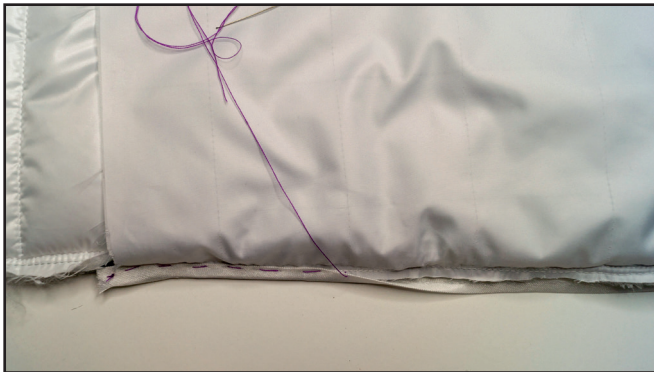
Hand-baste the bias binding to the pocket lining attaching seam allowance on the front side.

18



Stitch the bias binding with unilateral zipper foot. Use the threads, matching the jacket wrong side.

19



Turn the bias binding around the raw edge and baste it.

20



Stitch the bias binding 1 mm (0.039") from the edge with unilateral zipper foot. Use the threads, matching the jacket wrong side.

21



Pin around the pocket to join the two pieces together. Pin the bias binding to the pocket upper edge. Bend the edge of bias binding by 1 cm (0.39"). Stitch the bias binding. Use the threads, matching the jacket wrong side.

22



Turn the bias binding around the raw edge and baste it. Stitch the bias binding 1 mm (0.039") from the edge. Use the threads, matching the jacket wrong side.

23



Serge the seam allowance of the princess seam above the pocket. Set the serger cutting width 5 mm (0.2") to cover the seam allowances completely by bias binding. Thanks

to serger, finishing the seam allowances become flatter, which makes it easier to attach the bias binding.

24



Stitch the bias binding along the princess seam and along the pocket lining seam allowances on the side piece so that it covers the serged seam. Stitch the bias binding with unilateral zipper foot. Use the

threads, matching the jacket wrong side.

25



Turn the bias binding around the raw edge, so that it covers the serged seam and baste it. Stitch the bias binding 1 mm (0.039") from the edge. Use the threads, matching the jacket wrong side.

26



Pin the pocket bag to the front piece. Stitch along the lower and central edges 3 mm (0.12") from the edge. Repeat the steps with the opposite pocket (steps 3 - 26).

27



Pin and clip the side and front pieces with right sides together. Pin along each quilted line, aligning them very precisely.

28



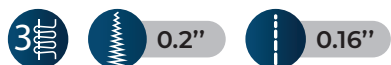
Serge the side and the front pieces together. Be careful not to get the needles under the knife, take your time and remove them timely!

29



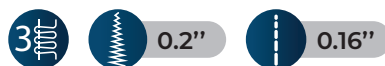
Make sure all stitch lines coincide. Stitch the side piece other edge to the back piece (steps 27 - 29).

30



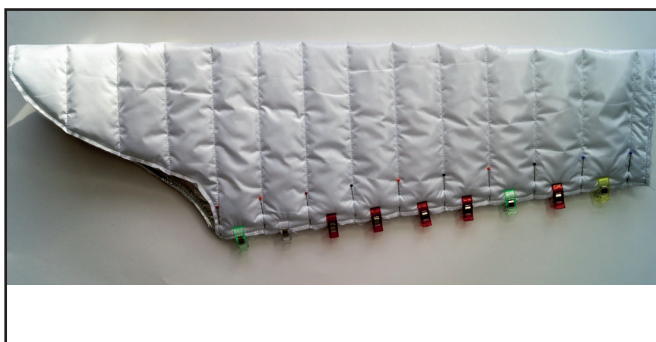
Clip the shoulder edges with right sides together. Serge them.

31



With right sides together, pin the sleeve front piece to the sleeve back piece. Pin along each quilted line, aligning them very precisely. Serge the sleeve pieces.

32



With right sides together, pin and clip the sleeve front piece to the sleeve back piece along the side edge. Pin along each quilted line, aligning them very precisely. Serge the sleeve pieces.

33



With right sides together, clip the hood center and side pieces, aligning the marks. Serge the pieces.

34



Repeat the same steps with the opposite hood side piece.

35



Attach the bias binding to the back princess seam, shoulder, sleeves and the hood seams in the way, described in steps 24 - 25. Use the threads, matching the jacket wrong side.

36



Cut a strip of the jacket fabric lower layer 35 mm (0.14") wide and 100 mm (3.94") long to make a loop.

37



Fold the strip long edges twice with right sides together, baste and then stitch 1 mm (0.039") from the edge. Use the threads, matching the jacket wrong side.

38



Pin the prepared loop strip to the back neckline center on the wrong side. Stitch the loop strip 3 mm (0.12") from the edge.

39



With right sides together, sew the sleeve seam, aligning the marks. Distribute the fabric along the sleeve head not to make the folds. Stitch the sleeve in place 8 mm (0.31") from the edge.

40



Serge the armhole seam allowances and the sleeve head together.

41



With right sides together, stitch the hood along the neckline, aligning the marks. Serge the pieces.

42



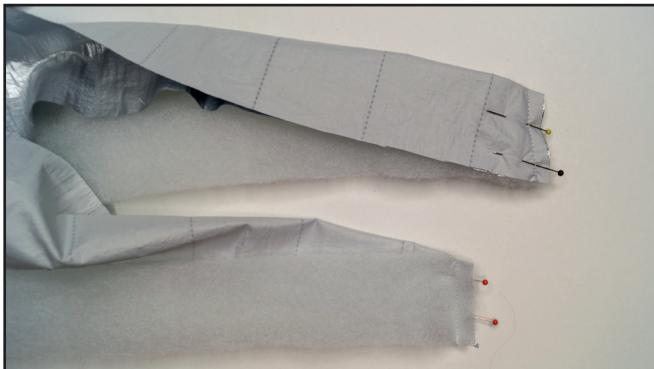
Attach the bias binding to the armholes and the neckline. Use the threads, matching the jacket wrong side. When attaching the bias binding, stitch its short ends in a ring at an angle of 45°.

43



Serge the jacket and sleeves lower hems, central edge and the hood.

44



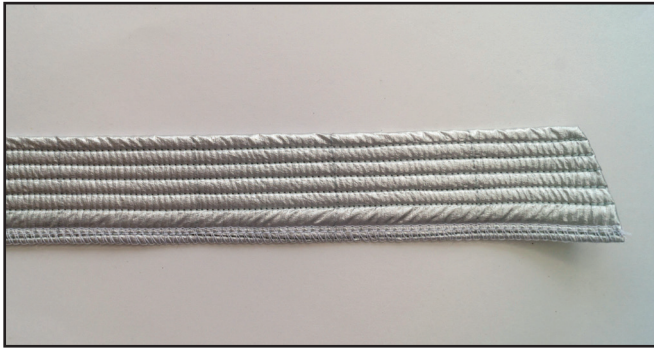
Fold the wind flap in halves and pin it along the short edges, also pinning the insulation. Stitch the short edges 7 mm (0.28") from the edge. Trim the insulation in the seam allowances close to the seam.

45



Turn the wind flap out and pin along the long edge.

46



Beginning from the fold, stitch parallel seams 5 mm (0.2") from each other. Use the threads, matching the jacket right side. Then serge the edge.

47



Pin or baste one zipper tape to the front with right sides together. Place the zipper to sit accurately in the seam without waving and pulling the fabric. Align the zipper bottom stop with the jacket lower hem. Fold the zipper top tape extension over and align the zipper top stop with the hood stand upper edge. If the zipper is too long, you should shorten it. Stitch the zipper in place with an unilateral zipper presser foot 10 mm (0.39") from the edge. Use the threads, matching the jacket upper layer fabric.

48



threads, matching the jacket right side.

Aligning the edges, baste the wind flap to the front piece over the zipper. Use an unilateral zipper presser foot to stitch the wind flap to the jacket front, sewing exactly along the zipper seam. Use the

49



Fasten the zipper and mark the place for the hood attaching seam and the quilted lines on the opposite zipper tape.

50



Baste the zipper opposite tape to the left front piece. Very precisely, align the mark on the zipper with the seam of attaching the neckline and the quilted lines on the front piece. Stitch the zipper in place with an unilateral zipper presser foot 10 mm (0,39") from the edge, in

the same way you attached the first zipper tape. Use the threads, matching the jacket right side. If the slider prevents you from finishing the seam, then place the machine needle in the work, raise the zipper foot, move the zipper slider and sew on.

51



Fasten the zipper, make sure that the hood attaching seams, quilted lines, the hood edge and the garment lower hem coincide and the zipper is flat, not in waves.

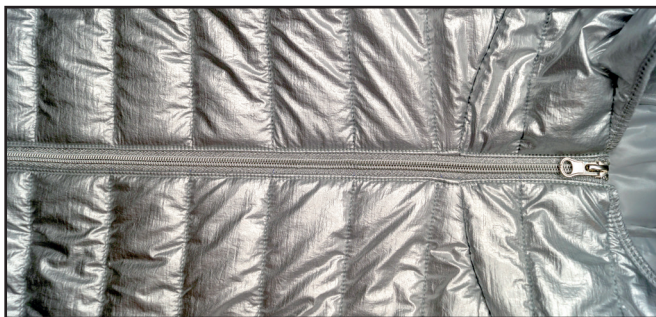
52



Attach the bias binding to the central edge. Use the threads, matching the jacket wrong side.



53



0.071 - 0.087"

Topstitch the seam allowances along the zipper 1 mm (0.039") from the edge. Use the threads, matching the jacket right side.

54



0.14 - 0.16"

sides together, stitch the elastic edging ribbon along the jacket lower hem, folding around 10 mm (0.39") of the ends to the wrong side. Align the elastic edging ribbon center with the edge and then stitch 1 mm (0.039") from the edge. Sew with a longer stitch and set the thread tension as 0. I used a water-soluble thread, that disappears after the first washing.

Cut a piece of elastic edging ribbon, it's length indicated on the pattern. The length is designed for attaching without tension, but if your hip girth is less than the typical value for your size, then you can take the length 4-6 cm (1,57 - 2,36") less. With right

55



0.14 - 0.16"

setting a wide stitch and adjusting the upper thread tension to 0, or, like me, with a water-soluble thread.

Cut two pieces of elastic edging ribbon, it's length indicated on the sleeve front pattern. Stitch the bias binding short ends forming a circle. Stitch the wrong side to the sleeve lower hem, evenly pulling the ribbon,

56



0.14 - 0.16"

thread. Fold the elastic edging ribbon ends to the wrong side.

Cut a piece of elastic edging ribbon, it's length indicated on the hood side pattern. Stitch the wrong side to the hood, evenly pulling the ribbon, setting a wide stitch and adjusting the upper thread tension to 0, or, like me, with a water-soluble

57



Fold the elastic edging ribbon to the wrong side and stitch it in place 1 mm (0.039") from the edge, to cover the serger seam and stitching exactly along the elastic edging ribbon lower edge. Use the threads, matching the jacket right side.

NOTE:

If you sewed with ordinary threads in steps 54 - 56, then these lines should be removed. With steam and using a cotton fabric, carefully press the elastic edging ribbon, but not the insulation. We do it to elastic edging ribbon return the shape and shrink.

58



Remove the basting stitches and trim the thread tails. The jacket is ready!

ELINA PATYKOVA

ПРО ШИТЬЕ

**THANK YOU FOR JOINING MY TEAM AND ME!
SHARE YOUR WORKS IN INSTAGRAM AND MY
GROUP IN VKONTAKTE. HOPE YOU WILL STAY
WITH US FOR OUR NEXT PROJECT!**