

WAISTCOAT CLASSICAL FOR WOMEN

SKILL LEVEL



INSTRUCTIONS FOR SEWING

ELINA PATYKOVA

ПРО ШИТЬЕ



ELINA_PATYKOVA



ELINA-PATYKOVA.RU



VK.COM/ELINA_PATYKOVA



YOU WILL NEED THE FOLLOWING MATERIALS:

- quilted jacket fabric with insulation,
- lining fabric,
- invisible zippers 18 - 20 cm (7,09 - 7,87") 2 pcs,
- Alfa snap buttons 15 mm (0.59") 6 pcs.,
- matching threads,
- Microtex 70-80 needles.

A

Check the pattern for amount of fabric to take according to your size. Note: if the width of the fabric differs from the one specified in the table, the length of the cut is likely to be different.

B

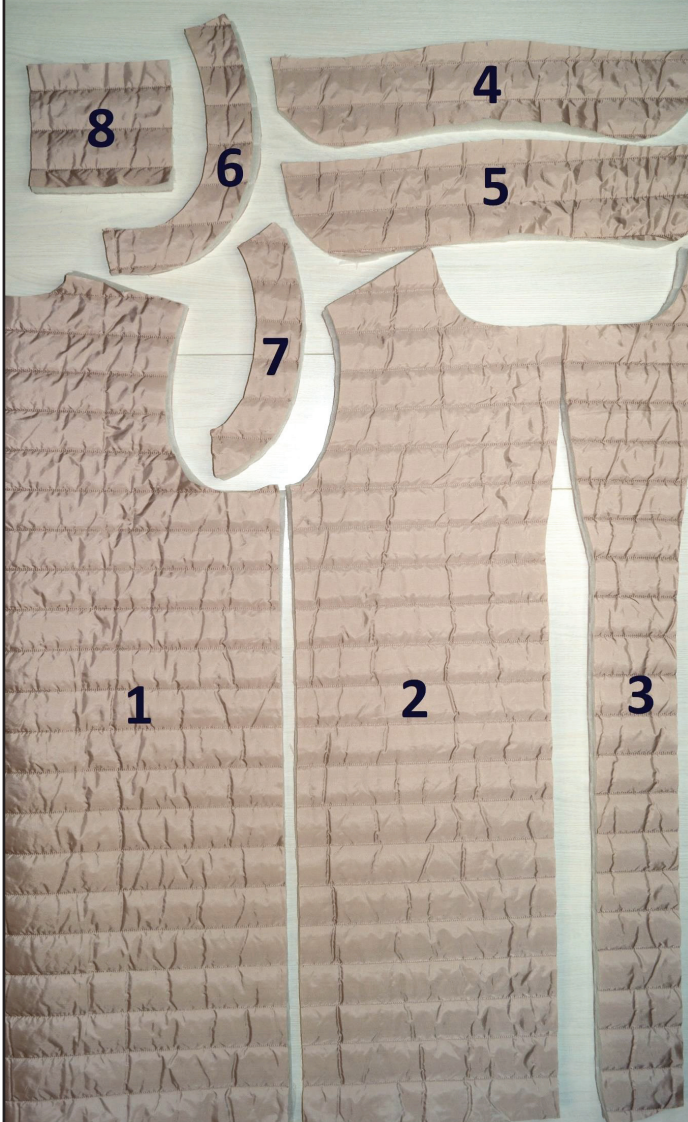
Let us start the cutting. Print and glue all the paper patterns. When printing, do not forget to check the size of the test square.

C

Put the paper pattern pieces onto the fabric. It's important to check that the grain is straight. Pin the paper pattern pieces to the fabric gently and cut the fabric along the outline. It is better to cut each quilted fabric piece separately to get symmetrical quilted lines on the opposite pieces. First cut one piece, then place it on the fabric with right sides together aligning the quilted lines and then cut the opposite piece. Note: seam allowance is included. Transfer any necessary marks from the pattern onto the wrong side of your fabric. Align the line that runs on the fronts underarms, back and the front facing with one of the quilted lines. While cutting check the quilted lines to be aligned on the pieces and then stitch them. While cutting, place the pocket flap so that one of the quilted lines runs along the fold line.

NOW YOU HAVE ALL THE PIECES:

THE WAISTCOAT QUILTED
FABRIC PIECES:



- ❶ back - cut 1 on the fold
- ❷ front - cut 2
- ❸ front facing - cut 2
- ❹ lower collar cut 1
- ❺ upper collar - cut 1
- ❻ back armhole facing
- ❼ front armhole facing
- ❽ pocket flap

LINING FABRIC
PIECES:



- ❶ back - cut 1 on the fold
- ❷ front - cut 2
- ❸ pocket lining - cut 4

Note: if the fabric frays easily, you can use pinking shears for cutting.

NOW WE CAN START SEWING

SYMBOLS:



straight stitch



the stitch length in (in)



flat lock stitch



zigzag stitch



the stitch width in (in)



3-Step Zigzag Seam Finishing



unilateral zipper foot



universal presser foot



invisible presser foot



pinning

You should lockstitch the seam and trim the thread tails or tie the seam thread tails and hide them into the seam after sewing a serger stitch or cover seaming chain stitch.



3-thread serger stitch



4-thread serger stitch

NOTE:

A

If the fabric is slippery or you are a beginner, you would better hand-baste instead of pinning the fabric. Not to leave holes after hand-basting, stitch on the seam allowance close to the seam.

B

4-thread serger stitch

If you do not have a serger, you can use stretch stitches available on your sewing machine, or at least, a zigzag stitch.

C

3-thread serger stitch

If you do not have a serger, you can replace it with an overedge stitch, or a zigzag stitch.

D

flat lock stitch

If you do not have a coverstitch machine, the flat seam can be performed with a) a twin needle on a sewing machine, b) decorative stretch seam on a sewing machine, c) finish the seams with serger and stitch them with a straight stitch.

SEWING GUIDE

1



Serge along the outline of all the quilted jacket fabric with insulation pieces, except the pocket flaps. Serger fixes the insulation and the shell fabric and makes the seam allowances flatter. If you do not have a serger, sew the shell fabric piece with a straight stitch 4 - 5 mm (0.16 - 0.2'') from the edge.

2



Unstitch the quilted lines along the folded lines on the pocket flap pieces. Trim the half of insulation close to the quilted line. Serge the rest of insulation. Iron the pockets flaps with steam upright, avoiding ironing the insulation.

3



Pin the fronts and the back shoulder edges with right sides together. Stitch them 10 mm (0.39'') from the edge.

4



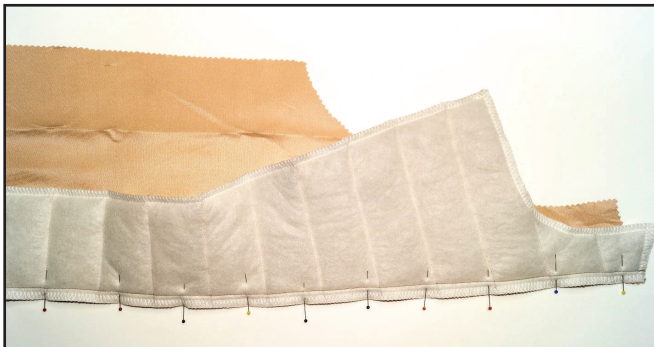
With right sides together, pin the lower collar to the waistcoat neckline, aligning the marks. Stitch the lower collar in place 10 mm (0,39") from the edge. Stitch exactly between the marks, without getting onto the collar side seam allowances.

5



Slash all over the lower collar seam allowances every 15-20 mm (0,59 - 0,78"), not reaching 1 mm (0,03") the seam line.

6



Pin the front facing and the front lining with right sides together. Stitch the pieces 10 mm (0,39") from the edge. Stitch the opposite front facing and the front lining in the same way.

7



Topstitch the front facing seam allowance on the lining 1 mm (0.03") from the edge.

8



0.079 - 0.1"

With right sides together, pin the armholes facings to the fronts and back lining pieces, aligning the marks. Stitch the facings 10 mm (0.39") from the edge.

9



Slash the lining seam allowances along the facings attaching seams every 15 - 20 mm, (0.59 - 0.79") 1 mm (0.03") from the seam.

10



0.079 - 0.1"

Topstitch the facings seam allowance on the lining 1 mm (0.03") from the edge.

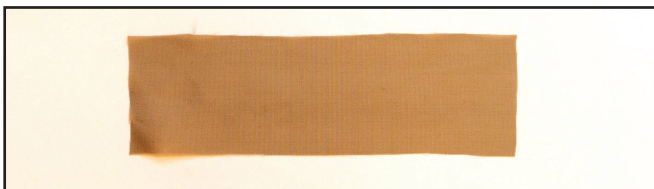
11



0.079 - 0.1"

Pin the fronts lining and the back lining shoulder edges with right sides together. Stitch them 10 mm (0.39") from the edge.

12



Cut a strip of the shell fabric without insulation 35 mm (0.14") wide and 110 mm (4.33") long to make a loop.

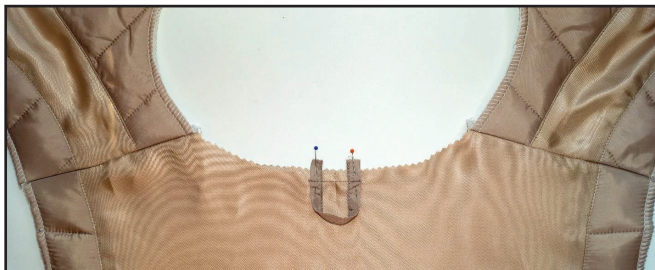
13



0.079 - 0.1"

Fold the strip long edges twice with right sides together, baste and then stitch 1 mm (0.039") from the edge.

14



0.071 - 0.087"

Pin the prepared loop strip to the back lining neckline center on the right side. Stitch the loop strip 7 mm (0.28") from the edge.

15



0.079 - 0.1"

With right sides together, pin the upper collar to the garment lining neckline, aligning the marks. Stitch the upper collar in place 10 mm (0.39") from the edge. Stitch exactly between the marks, without getting onto the collar side seam allowances.

16



Slash all over the upper collar seam allowances every 15-20 mm (0.59 - 0.78"), not reaching 1 mm (0.03") the seam line.

17



0.079 - 0.1"



With right sides together, pin the upper and the lower collars, aligning the marks. Shape the upper collar slightly, i.e. gather to align the upper and the lower collars edges. Stitch the collar pieces 10 mm (0.39") from the edge. Stitch on the lower collar side, starting exactly from the collar seam and avoiding getting onto fronts and the front facing seam allowances.

18



Trim the collar corners and slash the seam allowances every 20 - 25 mm (0.78 - 0.98"), 1 mm (0.03") from the edge.

19



With right sides together, pin the front facing piece and the front along the lapel and the central edge, aligning the marks. Shape the front facing slightly in the area of

lapel. Stitch the pieces 10 mm (0.03") from the edge. Stitch on the front side, starting exactly at the collar attaching seam last stitch and avoiding getting onto the collar seam allowances.

20



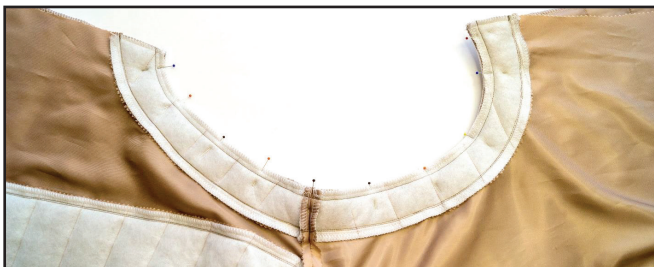
Trim the lapel corners and slash along the lapel seam allowances every 20 - 25 mm (0.78 - 0.98"), 1 mm (0.03") from the edge.

21



Pin the seam allowances of the waistcoat neckline and the garment lining neckline together. Stitch them between the shoulder seams 7 mm (0.28") from the edge.

22



With right sides together, pin the garment and the lining along the armhole, aligning the marks. Stitch them 10 mm (0.39") from the edge.

23



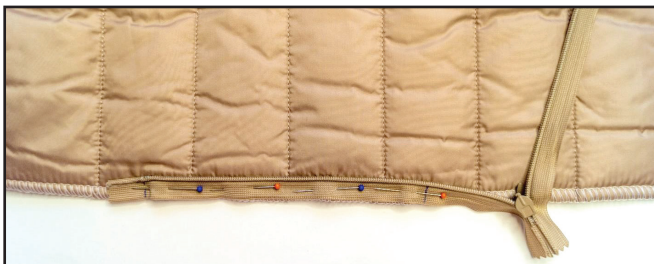
Slash the seam allowances along the armhole every 20 - 25 mm (0.78 - 0.98") 1 mm (0.039") from the seam.

24



Topstitch the armhole seam allowances on the facing 1 mm (0.039") from the edge. Topstitch in two stages: first stitch on the front up to the shoulder seam, then stitch on the back up to the shoulder seam. Repeat the same steps with the opposite armhole (steps 22 - 24).

25



Pin one invisible zipper tape to the front with right sides together. Align the zipper top stop with the pocket opening upper mark. Mark the place for the pocket opening on the zipper.

26



Stitch one zipper tape to the front with the invisible zipper presser foot exactly between the marks.

27



Mark the places of aligning with the quilted lines on the zipper.

28



Fasten the zipper. Transfer the marks of aligning with the quilted lines and the marks of the pocket opening from one zipper tape to the opposite one.

29



Baste the zipper opposite tape to the back piece, aligning the marks. Stitch the zipper to the back.

30



Fasten the zipper. Make sure that it is easy to fasten, that the quilted lines and the pocket opening marks coincide.

31



Pin the waistcoat and the waistcoat lining side edges above and below the zipper. Pin along each quilted line, aligning them very precisely. Stitch the side seam 10 mm (0.39") from the edge above and below the invisible zipper. Stitch the seams exactly up to the pocket opening. Leave a hole 130 mm (5.12") in the garment lining.

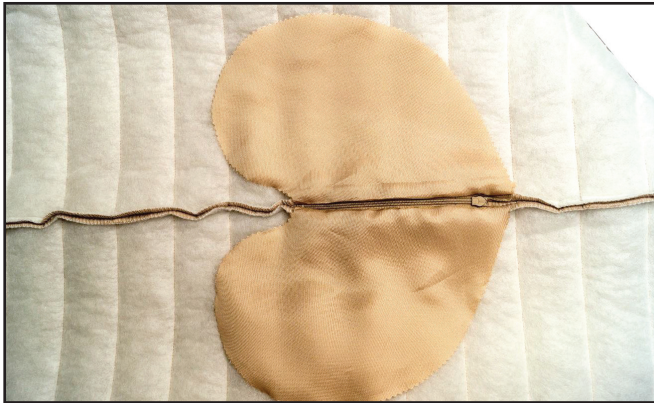


32



Pin one pocket lining with right side to the zipper, aligning the marks. Stitch the pocket lining as close to the zipper as possible with the invisible zipper foot. If the slider prevents you from finishing the seam, then place the machine needle in the work, place the zipper foot up, move the zipper slider, place the zipper foot down and sew on.

33



Repeat the same steps with the pocket other lining and the other zipper tape.

34



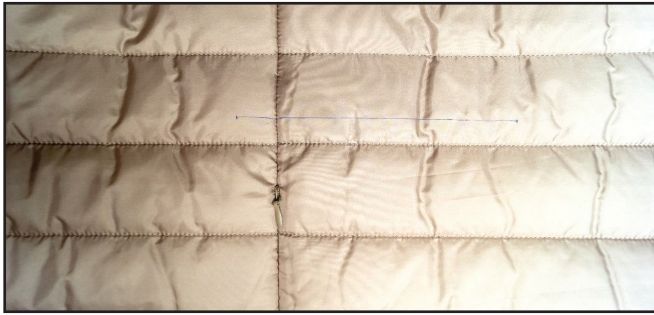
Fold both pockets linings towards the front and pin them. Stitch the pocket linings 10 mm (0.39") from the edge. Repeat the same steps with the opposite pocket and the side seam (steps 25 - 34).

35



Fold the pockets flaps in half with right sides together and pin along the short edges. Stitch the pockets flaps short edges 10 mm (0,39") from the edge. Turn the flaps out. Unstitch the quilted lines exactly at the fold.

36



Transfer the flap position from the pattern onto the front and back.

37



Pin the pocket flap open edge to the marked line, avoiding pinning the lining. Stitch the flap 10 mm (0.39") from the edge.

38



Trim the flap allowance close to the seam.

39



Fold the flap down and topstitch it in place 7 mm (0.28") from the edge, avoiding stitching the lining. Repeat the same steps with the opposite flap (steps 36 - 39).

40



Turn the waistcoat out to the wrong side. Pin the garment and the lining lower hems with right sides together. Start stitching at the central edge 40 mm (1.57") from the lower edge and move smoothly closer to the edge, making the seam allowance 10 mm (0.39"). Finish the seam again 40 mm (1.57") from the lower edge.

41



Trim the excess allowances and corners ends. Slash along the curved seam.

42



Fold 40 mm (1.57") up and hand-baste the lower hem seam allowance to the insulation but avoid basting the shell fabric. Turn the garment out to the right side through the hole, left in the lining side seam.

43



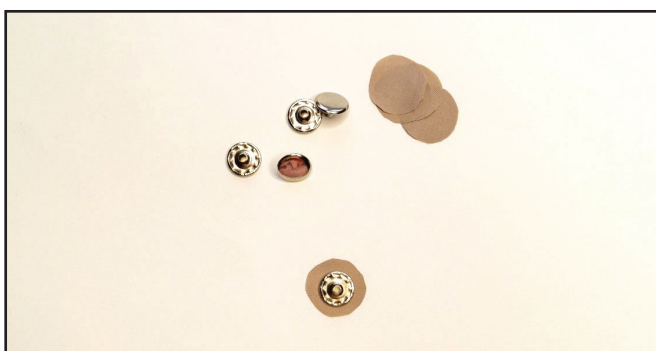
This is how the waistcoat lower hem should look on the wrong side.

44



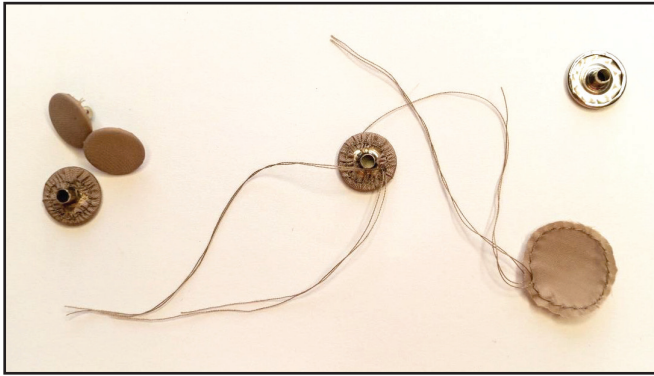
Hand-baste the side seam hole with a blind stitch.

45



Cut out the shell fabric button patterns slightly larger than the diameter of the snap buttons. I cut the 25 mm (0.98") diameter shell fabric pieces for 15 mm (0.59") diameter snap buttons.

46



Leaving the 50 mm (1.98") thread tails, stitch a gather thread around the edge 2 - 3 mm (0.078 - 0.1") from the edge. Place the snap button top on the fabric piece and pull up the gathers, pulling the upper thread tails at the same time and then tie them together making several

knots. Then tie the lower thread tails together and make several knots. Trim the thread tails.

47



Transfer the marks for the snap buttons on the fronts. Pay attention to the aligning of the quilted lines and the the waistcoat hem. Fold the lapels, place the waistcoat edges, forming a roll towards the front facing. Pin the front and the front facing layers next to the marks at the desired place. Punch 2 - 2.5 mm (0.079 - 0.098") holes with a Hole Punch. Attach the snap buttons with a press.

48



Remove the basting stitches and trim the thread tails. The waistcoat is ready!

ELINA PATYKOVA

ПРОШИТЬЕ

**THANK YOU FOR JOINING MY TEAM AND ME!
SHARE YOUR WORKS IN INSTAGRAM AND MY
GROUP IN VKONTAKTE. HOPE YOU WILL STAY
WITH US FOR OUR NEXT PROJECT!**