

SUIT «BLACK» FOR BOYS

SKILL LEVEL



INSTRUCTIONS FOR SEWING

ELINA PATYKOVA

ПРО ШИТЬЕ



ELINA_PATYKOVA



ELINA-PATYKOVA.RU



VK.COM/ELINA_PATYKOVA



YOU WILL NEED THE FOLLOWING MATERIALS:

- stretchy french terry or jersey,
- elastic 3,5 cm (1,38")
- matching threads

A

Read the pattern directions to determine how much fabric is necessary according to your size. Be sure to pay attention to the width of the fabric, if it differs from the one specified in the table, the length of the cut is likely to be different. The required length of the elastic is indicated on the pants waistband patterns. Before beginning your sewing project, wash it on warm, dry and iron your fabric.

Б

Cutting. Print and glue all the paper patterns. When printing, do not forget to check the size of the test square.

В

Put the paper pattern pieces onto the fabric. It's important to check that the grain is straight. Pin the paper pattern pieces to the fabric gently and cut the fabric along them. Note that the patterns include the seam allowance in the pieces. Mark all notches and other design features such as darts, pleats etc. from the pattern onto the wrong side of your fabric.

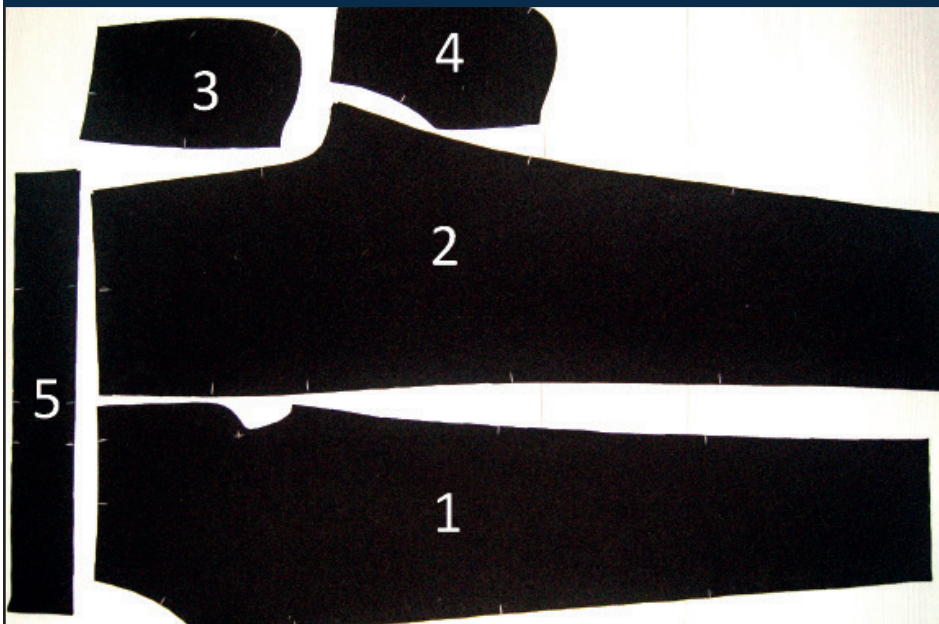
NOW YOU HAVE
ALL THE PIECES:

NOW YOU HAVE ALL THE PIECES OF THE JACKET:



- ① back - cut 1 on the fold
- ② front facing - cut 2
- ③ front - cut 2
- ④ sleeve - cut 2
- ⑤ collar - cut 2 on the fold
- ⑥ top pocket - cut 1
- ⑦ pocket - cut 2

AND ALSO PANTS PATTERN PIECES:



- ① front- cut 2
- ② back- cut 2
- ③ side body cut 2
- ④ lining cut 2
- ⑤ waistband cut 1 on the fold

NOW WE CAN START SEWING

JACKET SEWING

1



Wrong side



Right side

Finish the top edge of the top pocket with serger or zig zag stitch and press 2 cm (0.7") of it to the wrong side. Topstitch upper hem down 1.5 cm (0.5") from the edge.

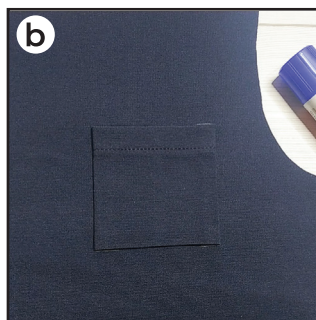
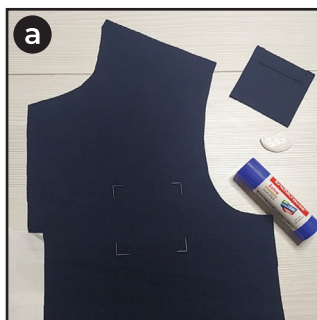
2



Fold side and bottom edges under 1 cm (0.3") and press them. To have the same bending, I mark on the wrong side at a distance of double-entry from the edge, i. e. 2 cm (0.7"). For convenience, you can also baste through the side and bottom edges. I use the Erich Krause stationery glue pencil, it securely fixes the

seam allowances, easily washes off at the first wash, leaving no trace. You can use special pencil glues for textiles, such as PRYM. The pocket is now ready to attach.

3



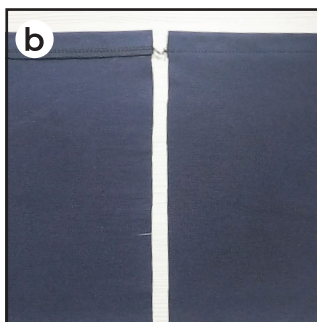
a) Mark the position of the pocket on the jacket left front on the right side.

b) Pin, baste or glue the pocket to the garment.

NOTE

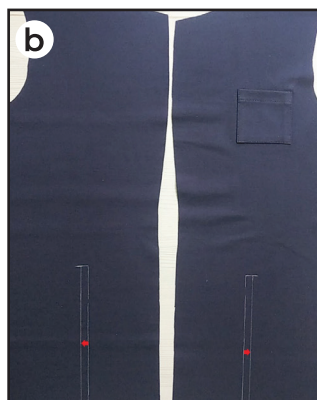
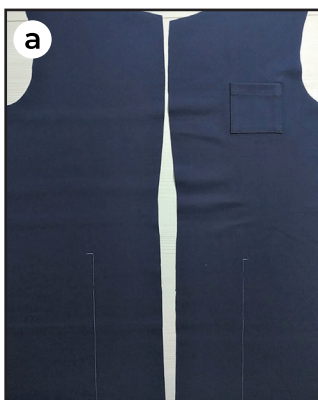
If you do not have a serger, you can use stretch stitches available on your sewing machine, or at least, zigzag stitch. If you do not have a coverstitch machine, the flat seam can be performed with: a) a twin needle on a sewing machine, b) decorative stretch seam on a sewing machine, c) finish the seams with serger and stitch them with straight stitch.

4



a) Then, use an edge stitch about 1 cm (0,3") from the fold to sew the pocket in place. Backstitch at the top corners of the pocket to secure them.
 6) Finish the top edges of the lower pockets with serger and iron 2 cm (0,7") of each top edge to the wrong side. Topstitch upper hem down 1.5 cm (0.5") from the edge.

5



a) Mark the position of the pockets on the right side of the jacket fronts.
 b) Measure 1 cm (0,3") to the side of the jacket seam and draw a parallel line.

6



a) Place the pocket to the front with the right sides together matching a new line with the outer edge of the pocket. Pin it. Mark the seam line 1 cm (0,3") in from the edge.
 b) Machine the pocket to the front exactly along the line.

7



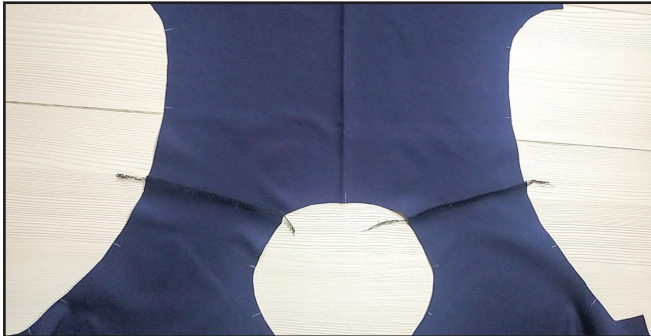
Press the pocket to the side seam of the front. Edgestitch around the other sides and bottom of the pockets 3-5 mm (0,2") from the folded edge.

8



Pin the jacket back to the jacket fronts at the shoulders with the right sides together and serge them.

9



Press the seams flat towards the back.

10



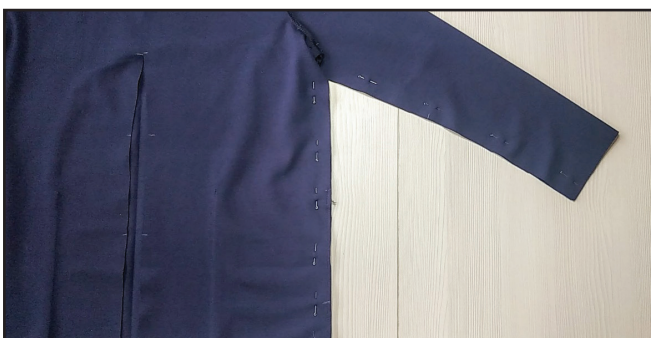
Baste or pin the sleeves into the armholes with right sides together matching all the marks and notches.

11



Stitch seams with a serger. The seam is pressed on the edge.

12



Pin and stitch the back and front together along the sleeve and side seam with one seam, matching all the marks, notches and underarm seams.

13



Serger it and iron towards the back. Repeat the steps with the opposite sleeve and a side seam.

14



Mark seam lines in the corners of the both collar patterns.

15



Attach the collar to the jacket neck edge matching notches and marks. Stitch from mark to mark. Slash all over the seam every 1.5-2 cm (0,5 - 0,7"), not reaching 1 mm (0,03") the seam line. The collar seam allowance along the front is pressed open and the seam

allowance along the back is pressed towards the collar.

16



Serger row and top edges of front facings. Then stitch the front facings with the collar matching the marks. Machine it. Slash all over the seam every 1.5-2 cm (0,5 - 0,7"), not reaching 1 mm (0,03") the seam line. Press the seam allowances open.

17



Stitch the upper and lower collars.

18



Machine them in place 7 mm (0,27") in from the edge up the neckline seam.

19



Trim the end seam allowances, reduce the seam allowance on the upper collar by half. Clip into curves not reaching 1 mm (0,03") to the seam line.

20



Mark the seam line on front facings and under-stitch them to the garment.

21



Stitch the front facings to the garment with the straight stitch 7 mm (0,27") in from the edge and 2 cm (0,7") at the bottom of the jacket. Start the seam exactly from the collars seam.

22



Trim the end collar, seam allowances and extra fabric from the lower edge of the jacket and reduce the seam allowance by half on the front facing.

23



Turn the collar and the front facings through to the right side. Press flat. For convenience, it is better to stitch the edges of the jacket with diagonal basting stitch.



24



Finish the lower edge of the jacket and the sleeves with serger, fold 2 cm (0,7") up to the wrong side and press.

25



Topstitch the hem of the sleeves and the jacket 1,5 cm (0,5") in from the edge.

26



Also, I topstitched an unbroken line 7 mm (0,27") in from the collar and the front facing edges.

27



Fold the collar right sides together, and pin it.

28



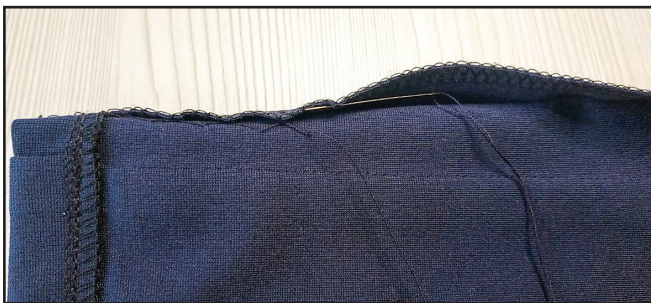
Hand stitch with a flat fell or blind hem stitch the top front facing edges and the shoulders, and use blind hem stitch to attach upper collar to the back neck.

29



Press the front facings towards the front along the lines marked on the pattern. Try to pin upper collar without crease and tension on the wrong side.

30



Hand stitch with a flat fell or blind hem stitch the raw edge of the upper collar to the front.

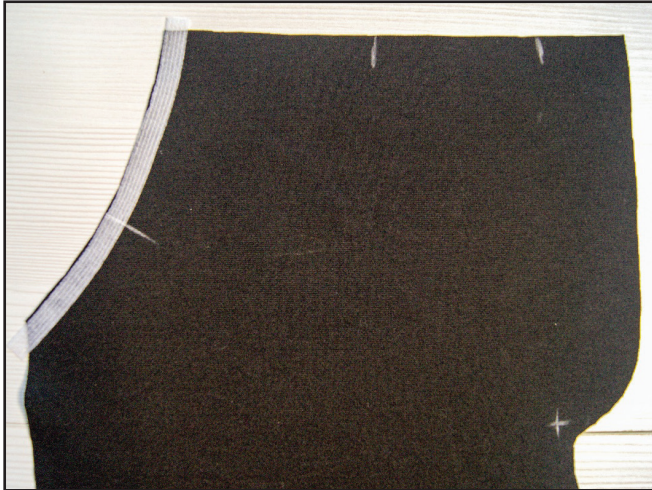
31



Remove the basting stitches, trim the thread ends and press once again. Our jacket is ready!

PANTS SEWING

1



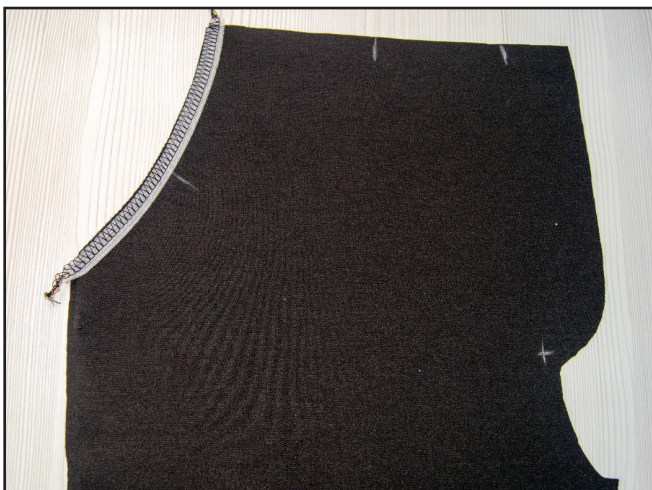
Apply a piece of 1 cm (0,3") wide fusible tape to the wrong side of the fronts along the pocket opening.

2



Place the pocket lining to the front right side and pin it in place.

3



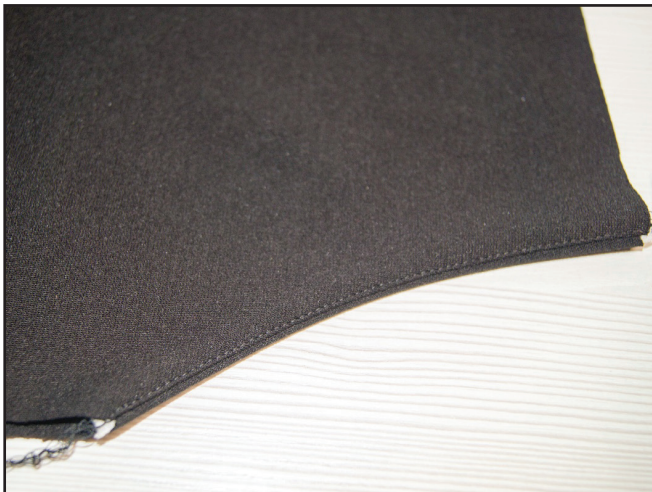
Stitch seams with serger.

4



Top-stitch in 1 mm (0,03") from the seam towards the lining.

5



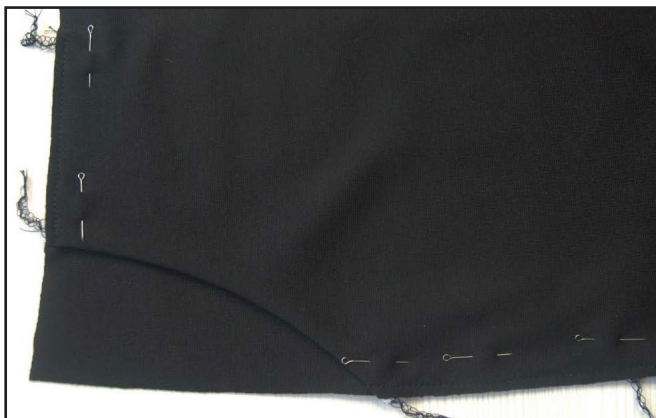
Open out the pocket and press the seam toward the lining.

6



Pin the pocket lining to the side front right sides together and serge it. Do the same with the second pocket. The stitches are pressed on the edge.

7



Sew a straight stitch about 3 -5 mm (0,12 – 0,19”) from the pocket and front raw edges to make your later work with them easier

8



a) Pin the fronts and backs right sides together, matching the marks, then serge along the side seams. Press the seams flat towards the back.
b) Pin the front and back along the inner leg right sides together, matching notches and any other marks. Stitch seams with serger. Press the seams flat towards the front.

9



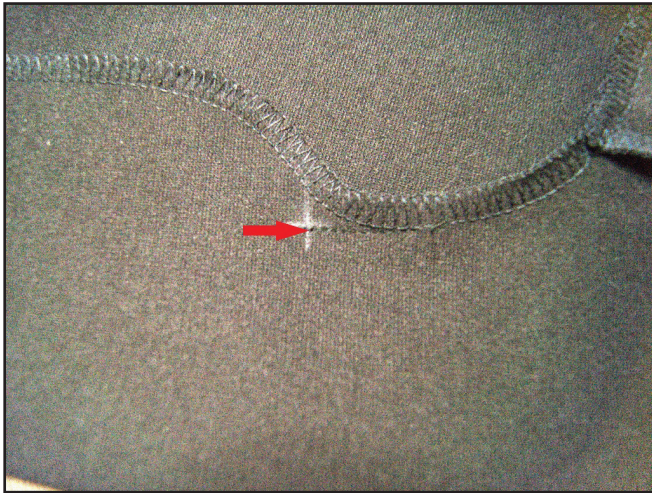
Insert 1 pant leg into the other right sides together and pin along the crotch matching the marks and inner side seams.

10



Stitch the crotch seam.

11



Continue the crotch stitch about 1.5-2 cm (0,5 - 0,7") to the fly mark.

12



Machine the fly about 7 mm (0,27") in from the top edge.

13



Press the fly and seam towards the left pant leg. Pin it. Understitch the fly to the wrong side with serger.



14



Join the ends of the waistband and serge them together. Fold it twice to the wrong side and press. Join the ends of the elastic by stitching them together overlapping the edges. Divide both the waistband and the elastic into fourths, and pin-mark. To avoid unnecessary thickening, do not match the elastic and waistband stitches.

15



Put the elastic into the band, match all the marks and pin in place.

16



Evenly stretching the elastic, stitch in 1 cm (0,3") from the waist band fold. Then stitch leaving 1 cm (0,3") from the first seam line.

17



To attach the waistband to the waist edge easier stitch the third seam line 5 mm (0,19") in from the edge

18



Now you have a waistband

19



Pin the waistband to the pants, matching all the marks.

20



Stretching the waistband, stitch it with serger. At the same time, make sure that the fabric of the pants themselves does not stretch. Press the seams towards the pants.

20



Fold 2 cm (0,7") the lower edges of the pant legs to the wrong side and press them. Hem the pant legs with coverstitch machine.

21



Remove the basting stitches, trim the thread ends and press once again.
The pants are ready!

ELINA PATYKOVA

ПРОШИТЬЕ

**THANK YOU FOR JOINING MY TEAM AND ME!
SHARE YOUR WORKS IN INSTAGRAM AND MY
GROUP IN VKONTAKTE. HOPE YOU WILL STAY
WITH US FOR OUR NEXT PROJECT!**