

BIKER DRESS FOR WOMEN

SKILL LEVEL



INSTRUCTIONS FOR SEWING

ELINA PATYKOVA

ПРО ШИТЬЕ



ELINA_PATYKOVA



ELINA-PATYKOVA.RU



VK.COM/ELINA_PATYKOVA



TO SEW THE DRESS YOU NEED:

- knitted fabric french terry or jersey,
- fusible interfacing for stretchy fabric,
- Alfa snap buttons 4 pcs.,
- open-end zipper,
- matching threads,
- kantenband,
- Jersey 70-80, Stretch 70-80 or Super Stretch 70-80 needles.

A

Check the pattern for amount of fabric and the zipper length to take, according to your size. Note: if the width of the fabric differs from the one specified in the table, the length of the cut is likely to be different. Before beginning your sewing project, wash the fabric on warm, dry and iron it.

B

Let us start the cutting. Print and glue all the paper patterns. When printing, do not forget to check the size of the test square.

C

Put the paper pattern pieces onto the fabric. It is important to check that the grain is straight. Pin the paper pattern pieces to the fabric gently and cut the fabric along the outline. Note: seam allowance is already included. Transfer all the necessary marks from the pattern onto the wrong side of your fabric.

NOW YOU HAVE ALL THE PIECES:

DRESS PIECES:



- ① lower back - cut 1 on the fold (french terry)
- ② right side lower front - cut 1 (french terry)
- ③ left side lower front - cut 1 (french terry)
- ④ upper back - cut 2 (french terry)
- ⑤ side upper front - cut 2 (french terry)
- ⑥ band - cut 2 on the fold (french terry) and cut 2 on the fold (fusible interfacing)
- ⑦ right center front and right front facing - cut 2 (french terry) and cut 1 (fusible interfacing)
- ⑧ left center front and left front facing - cut 2 (french terry) and cut 1 (fusible interfacing)
- ⑨ sleeve - cut 2 (french terry)
- ⑩ cuff - cut 2 (french terry) and cut 2 (fusible interfacing)
- ⑪ lower collar - cut 1 on the fold (french terry)
- ⑫ upper collar - cut 1 on the fold (french terry) and cut 1 on the fold (fusible interfacing)
- ⑬ back neck facing - cut 1 on the fold (french terry) and cut 1 on the fold (fusible interfacing)
- ⑭ shoulder mark - cut 4 (french terry) and cut 4 (fusible interfacing)
- ⑮ sleeve placket - cut 2 (french terry)

Cut the interfacing parts with 2 - 3 mm (1/8") seam allowances only, not to make the seams too thick. You can use pinking shears for cutting. Cut the opposite 7 and 8 interfacing pieces to reinforce the front facings, not the center fronts.

NOW WE CAN START SEWING

SYMBOLS:



straight stitch



the stitch length in (mm)



flat lock stitch



zigzag stitch



the stitch width in (mm)



3-Step Zigzag Seam Finishing



unilateral zipper presser foot



universal presser foot



invisible presser foot



pinning

You should lockstitch the seam and trim the thread tails or tie the seam thread tails and hide them into the seam after sewing a serger stitch or cover seaming chain stitch.



3-thread serger stitch



4-thread serger stitch

NOTE:

A

4-thread serger stitch

If you do not have a serger, you can use stretch stitches available on your sewing machine, or at least, a zigzag stitch.

B

3-thread serger stitch

If you do not have a serger, you can replace it with an overedge stitch, or a zigzag stitch.

C

flat lock stitch

If you do not have a coverstitch machine, the flat seam can be performed with a) a twin needle on a sewing machine, b) decorative stretch seam on a sewing machine, c) finish the seams with serger and stitch them with a straight stitch.

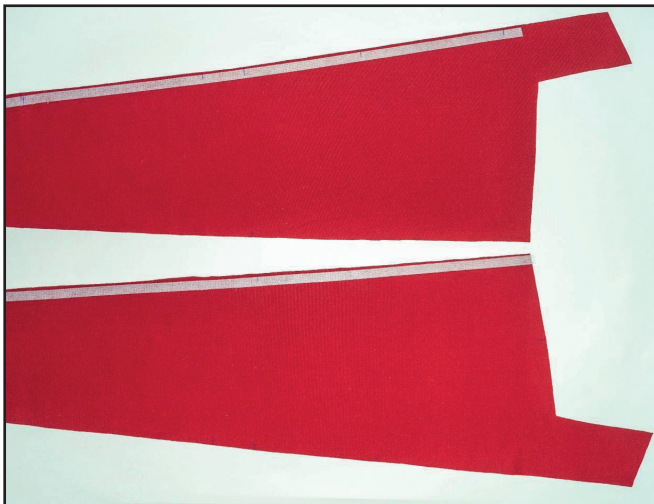
SEWING GUIDE

1



Fuse the interfacing to both bands, 4 shoulder marks, lower collar, cuffs, front facings and back neck facing.

2



Fuse the kantenband to the center fronts along the edges at the places for zipper attaching. Fuse the right center front along the central edge. Fuse the left center front along the side edges 20 mm (13/16") above and below the marks for attaching the zipper.

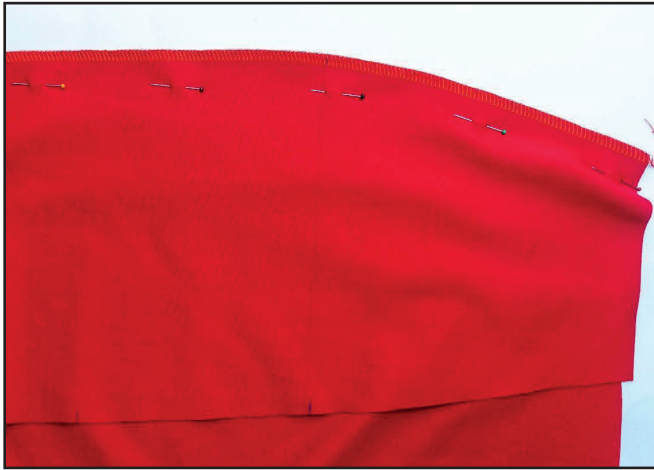
3



2-2,6

Baste the darts at the low back. Stitch the darts along the marked line. Remove the basting stitches and press the darts towards the center.

4



With right sides together pin the side lower front to the lower back along the side edge aligning the marks. Serge the pieces. Press the seam allowances towards the front. Repeat the same steps with the opposite side lower front.

5



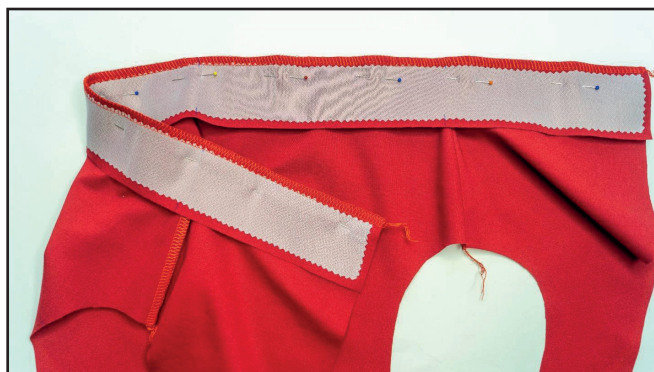
With right sides together pin the upper backs along the central seam. Serge the pieces. Press the seam towards the right side.

6



With right sides together pin the side upper front to the upper back along the side seam aligning the marks. Serge the pieces. Press the seam allowances towards the front. Repeat the same steps with the opposite side upper front.

7



Pin the dress bodice between the band pieces aligning the marks. Place the band pieces and the bodice right sides together. Align the bodice lower edge with the band curved edge. If you lack experience, it is better hand-baste the edges. Serge the pieces. Press

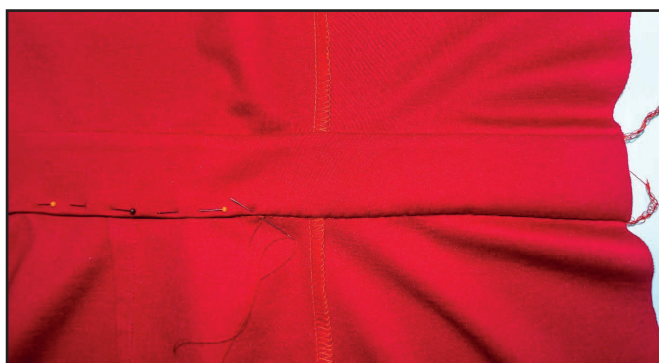
both band pieces to the lower edge.

8



With right sides together pin the skirt to the front band lower edge aligning the marks. Serge the pieces. Press the seam allowances towards the band.

9



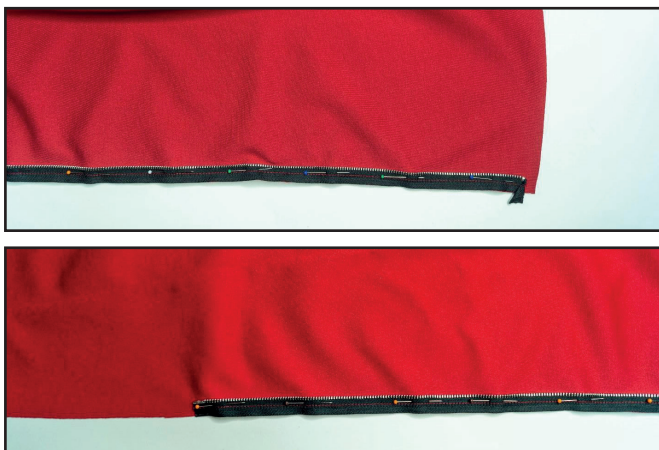
Fold the band 7 mm (1/4") to the wrong side, pin it, hiding the skirt attaching seam inside. Hand-baste it with a blind stitch. Press the band.

10



With right sides together pin the right center front to the garment aligning the marks. Serge the piece to the garment. Press the seam allowances towards the side fronts.

11



With right sides together pin or baste the right zipper tape to the right center front. Place the zipper to sit accurately in the seam without waving and pulling the fabric. Align the zipper bottom with the mark, indicated on the pattern. The zipper top stops should 7 mm (1/4") away from the collar gorge. If the zipper is too long, you can shorten it or

place the entire zipper lower. Stitch the zipper in place with a unilateral zipper presser foot 7 mm (1/4") from the edge. Fold the top of the zipper tape as it is shown in the photo.

12



Transfer the marks from the center front onto the zipper tape. Close the zipper and transfer the opposite marks to the opposite zipper tape.

13



Pin or baste the opposite tape to the left center front. Place the zipper wrong side to the piece right side. Very precisely, align the mark on the zipper, the zipper top and bottom

stops with the matching marks on the center front. Fold the top of the zipper tape over, as it is shown in the photo. Stitch the zipper in place with the unilateral zipper presser foot 7 mm (1/4") from the edge. If the slider prevents you from finishing the seam, then place the machine needle in the work, raise the zipper foot, move the zipper slider and sew on.

14



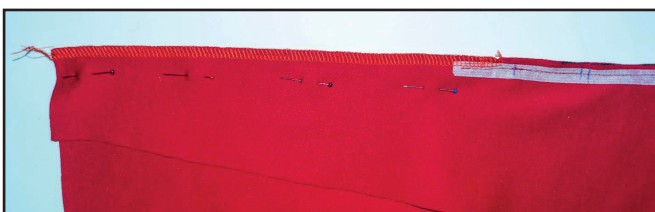
With right sides together pin the left center front to the garment aligning the marks. Stitch the pieces along the zipper 7 mm (1/4") from the edge. Sew on the left center front with the unilateral zipper presser foot, make sure that the backstitch

exactly coincides with the zipper attaching backstitch. Start stitching 20 mm (13/16") above the zipper and finish 20 mm (13/16") below the zipper.

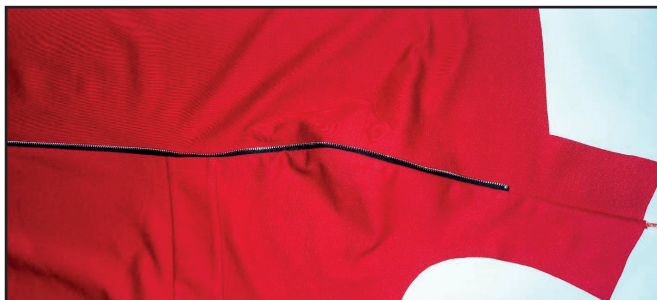
15



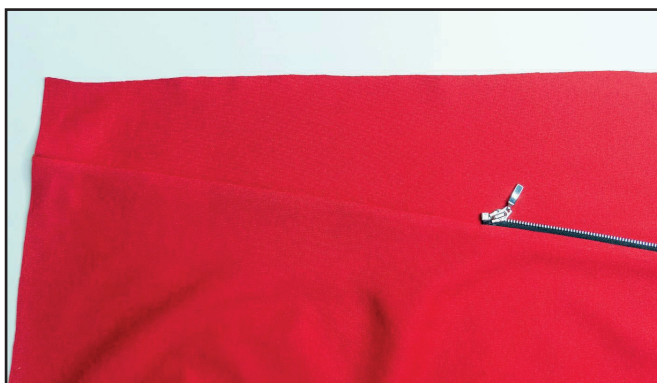
Serge the edges above and below the zipper as close to the zipper as possible. Tie the thread tails and hide them into the seam.



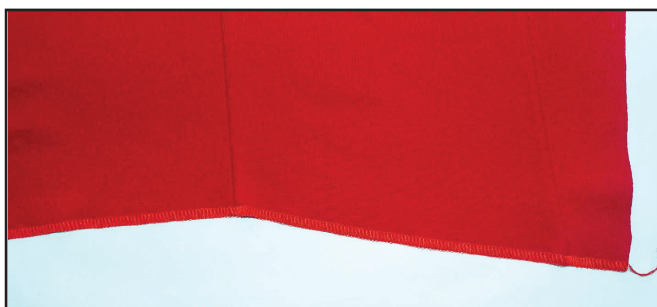
16



Press the seams flat towards the side fronts.

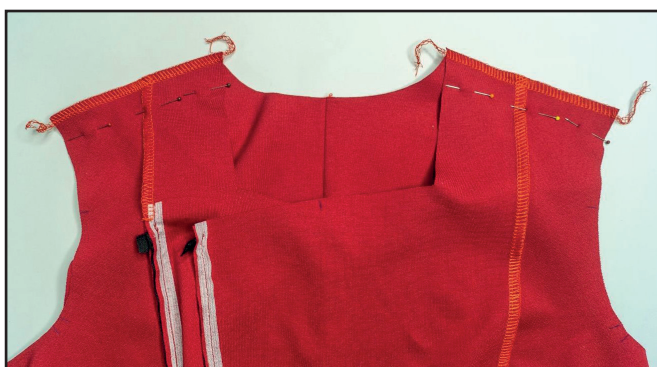


17



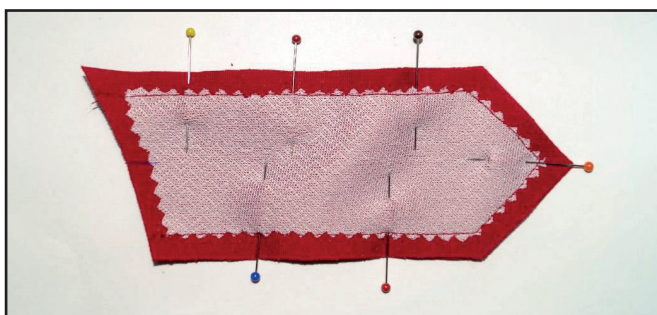
Finish the dress lower hem with a serger. Press the seam.

18



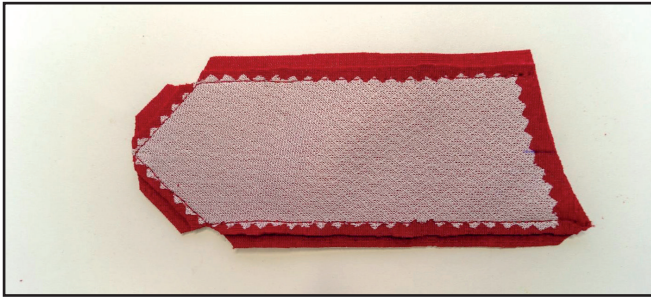
Pin the dress shoulder seams right sides together. Serge the seams. Press the seam allowances flat towards the back.

19



Pin two shoulder marks right sides together. Stitch the pieces 7 mm (1/4") from the edge along all the edges, except the shoulder edge.

20



Trim the seam allowances at the sharp corner points avoiding trimming the seam. Trim 3 - 4 mm (1/8") of one shoulder mark piece seam allowance. Turn the shoulder mark out to the right side and press it.

21



Topstitch the shoulder mark 5 mm (3/16") from the edge. Press it again.

22

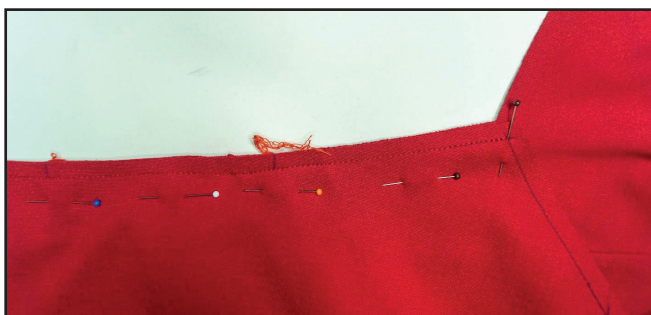


Pin the shoulder mark to the neckline. The marking on the shoulder mark should align with the shoulder seam. Stitch the shoulder mark 4 -5 mm (3/16") from the edge. Repeat the same steps with the opposite shoulder mark (steps 18 - 21).

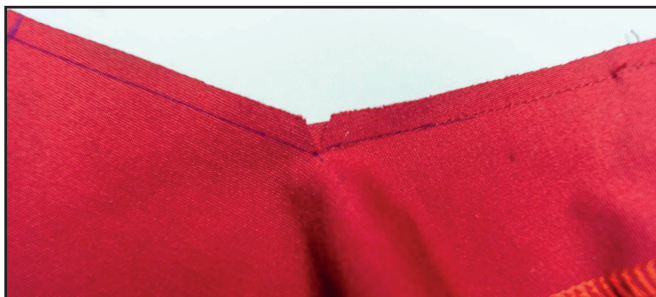
23



With right sides together, pin the lower collar to the garment neckline, aligning the marks. Be careful: draw the lines for the seam at the corners and precisely align the corners sharp points. Stitch the collar in place 7 mm (1/4") from the edge. Stitch between the corners.

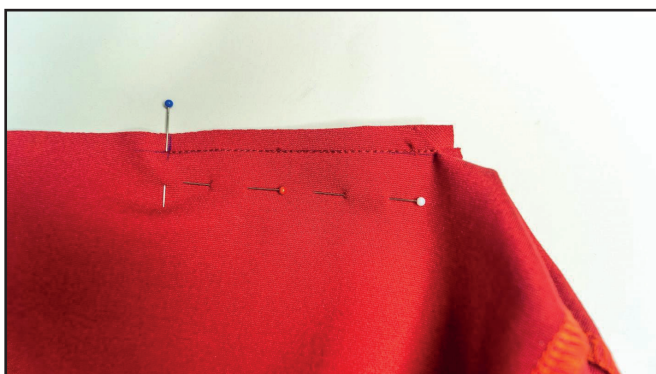


24



Slash the dress neckline seam allowance not getting 1 mm (1/16") up to the stitch end.

25



2-2,6

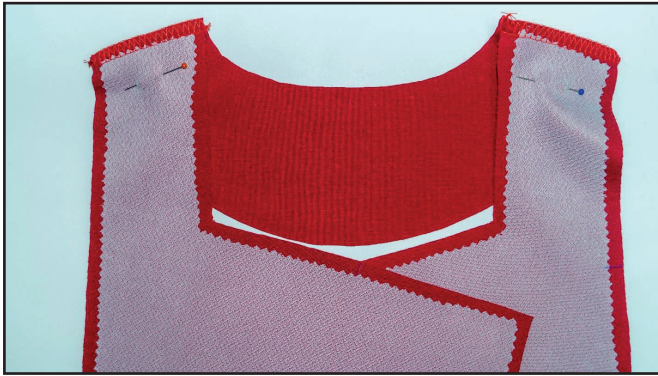
Pin the collar along the gorge. Align the collar sharp point precisely with the mark on the dress neckline. Stitch between the mark and the end of the previous seam 1 mm (1/16") from the edge.

26



This is how the collar should look like at this stage. Trim the seam allowances at the corner sharp points and press the seams.

27



Pin the front facing and the facing along the shoulder seams right sides together. Serge the pieces. Press the seam allowances flat towards the front facing.

28



Finish the outer raw facing and front facing edges with a serger. Press the seam.

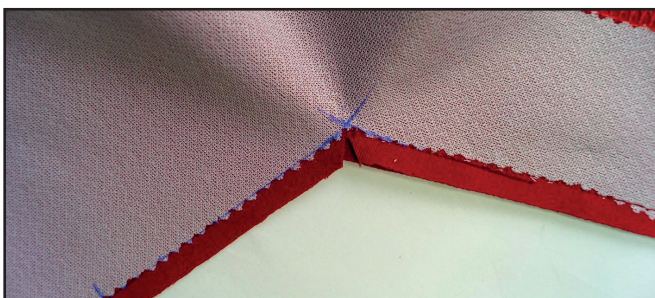
29



With right sides together, pin the upper collar to the garment neckline facing, aligning the marks. Be careful: draw the lines for the seam at the corners and precisely align the corners sharp points. Stitch the collar in place 7 mm (1/4") from the edge. Stitch between the corners.

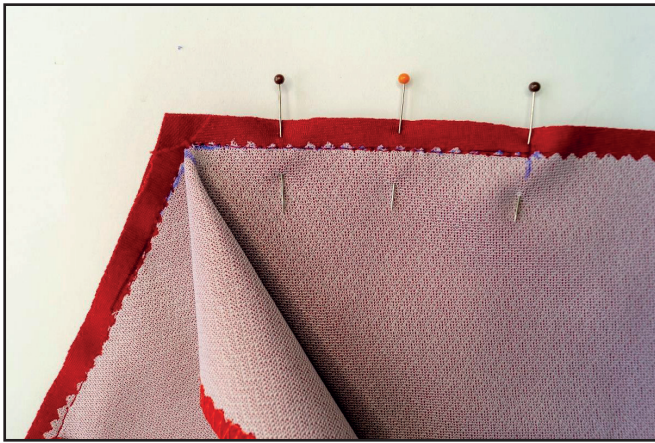


30



Slash the front facing seam allowance not getting 1 mm (1/16") up to the stitch end.

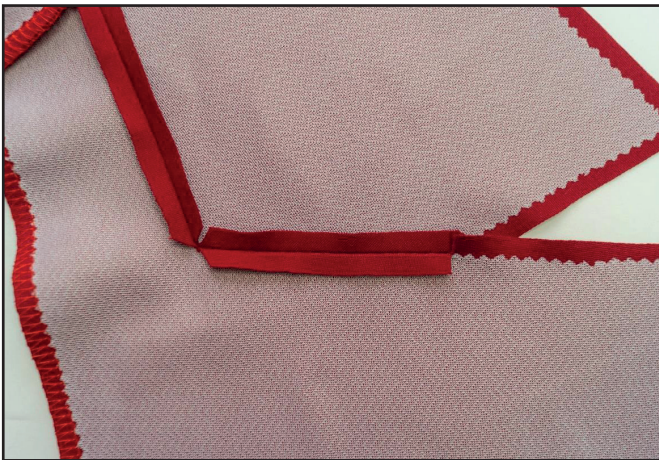
31



Pin the collar along the gorge. Precisely align the collar sharp point with the mark on the front facing. Stitch between the mark and the end of the previous seam 1 mm (1/16") from the edge.



32



Trim the seam allowances at the sharp corner points and press the seams.

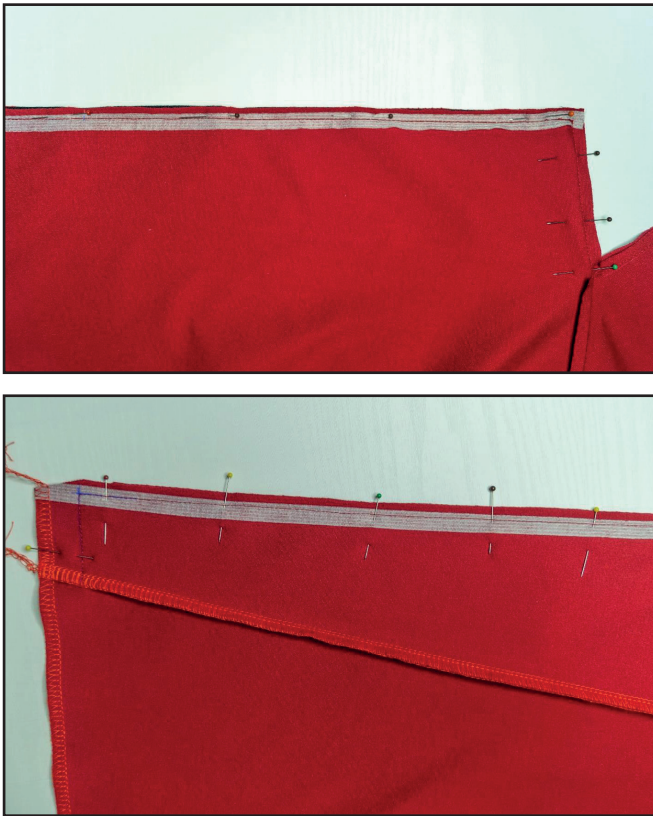
33



Pin the lower and upper collars right sides together. Shape the upper collar slightly, it means you gather it to make equal with the lower collar. Stitch the collar pieces 7 mm (1/4") from the edge. Stitch on the lower collar side, starting exactly at the collar seam and avoiding getting

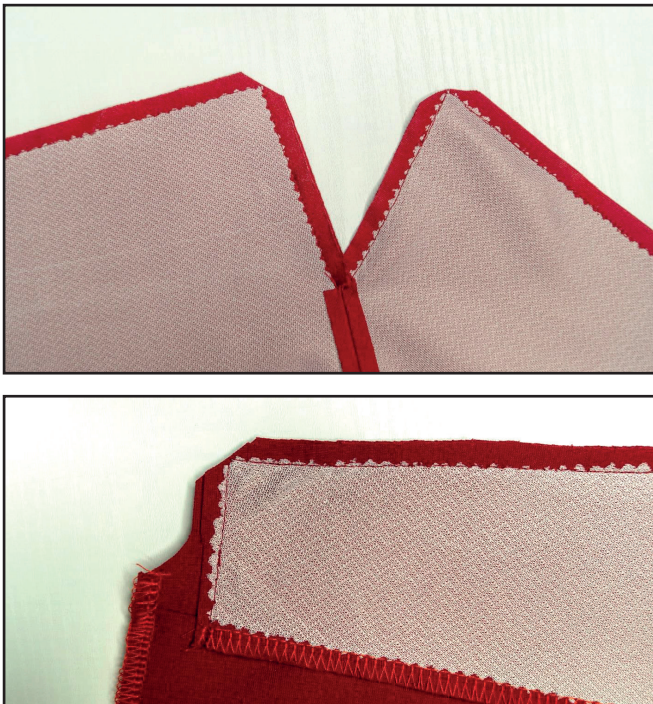
onto fronts and the front facing seam allowances.

34



With right sides together, pin the front facing and the front along the lapel and the central edge, aligning the marks. Stitch the pieces 25 mm (1") along the lower edge and 7 mm (1/4") along the other edges. Sew on the front with the unilateral zipper presser foot, make sure that the backstitch exactly coincides with the zipper attaching backstitch. Finish stitching just before the last stitch, avoiding getting onto the collar seam allowance. Repeat the same steps with the opposite front facing.

35



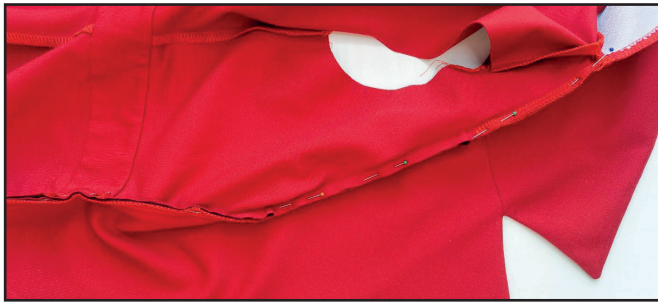
Trim the seam allowances at the corner and excess seam allowances along the lower edge. Turn out the front facings and the collar and press the seams.

36



Pin the dress neckline and the neck facing aligning the center and the seams. Stitch them with the unilateral zipper presser foot 4 - 5 mm (3/16") from the edge.

37



2-2,6

Pin the front facing edge to the right center front attaching seam aligning the marks. Stitch the front facing in place with the unilateral zipper presser foot 4 - 5 mm (3/16") from the edge. Repeat the same

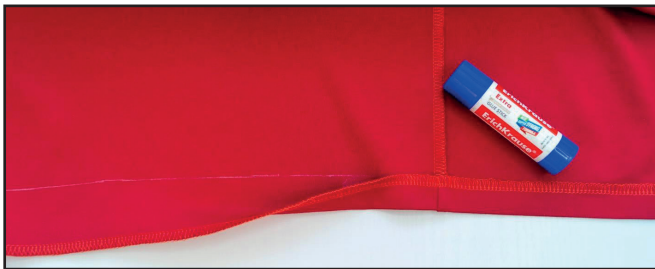
steps with the opposite front facing edge.

38



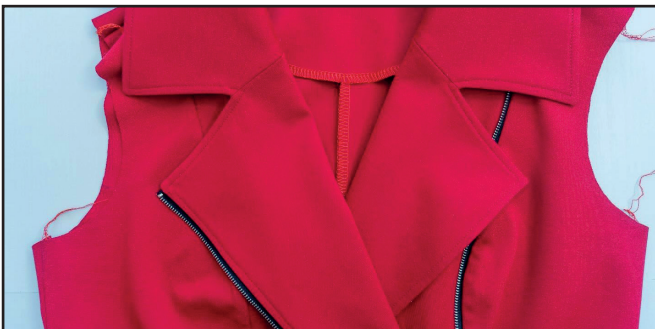
Hand-baste with a blind stitch the facing edge to the back center seam.

39



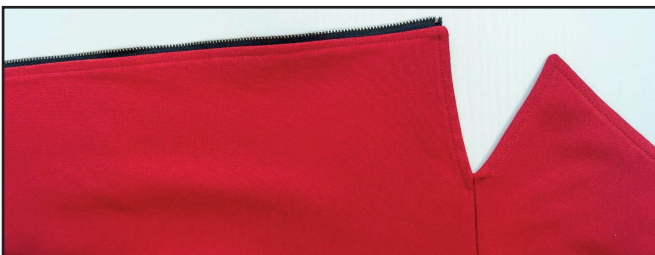
Draw a line along the dress lower hem 50 mm (2") from the edge. Use the line to fold the dress lower hem 25 mm (1") up to the wrong side. Pin, baste or glue the folded hem. Give the hem a final pressing.

40

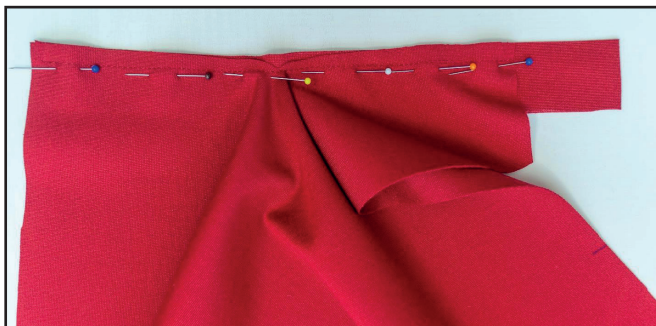


2-2,6

Topstitch all the edges: topstitch the dress lower hem 25 mm (1") from the edge and topstitch the center edge, the lapel and the collar 5 mm (3/16") from the edge. Press the seams.



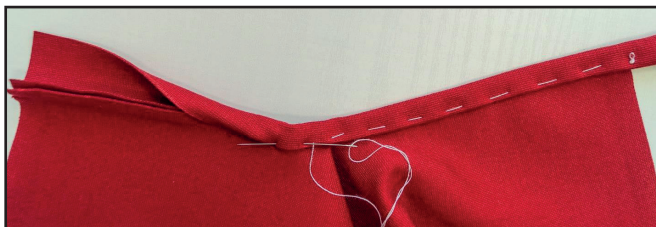
41



If you did not do it during the cutting, cut the sleeve along the slit line, indicated on the pattern. Open the slit to make a straight line. Pin, slightly stretching, the sleeve placket to the sleeve slit with right sides together. Place

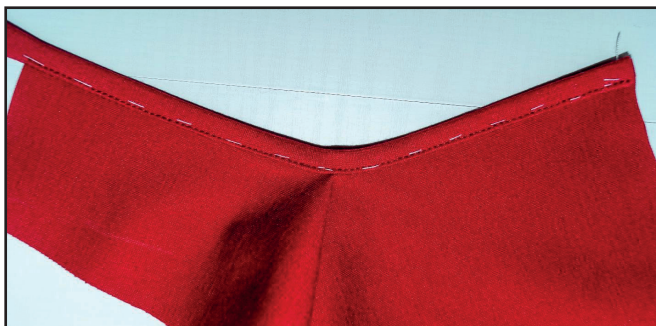
the slit top 5 - 6 mm (3/16") below the sleeve placket edge. Note: the sleeve placket pattern is made a bit bigger. Stitch the sleeve placket in place 7 mm (1/4") from the edge. Begin stitching from the sleeve side making sure that no creases are formed along the slit. Press the seam allowances towards the facing.

42



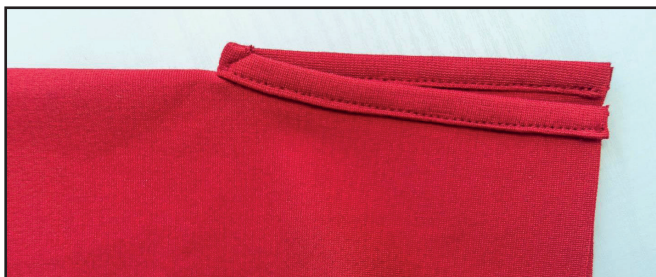
Wrap the sleeve placket strip, edge turned under to the wrong side around the seam allowance. Hand-baste it so that the sleeve placket will extend above the seam.

43



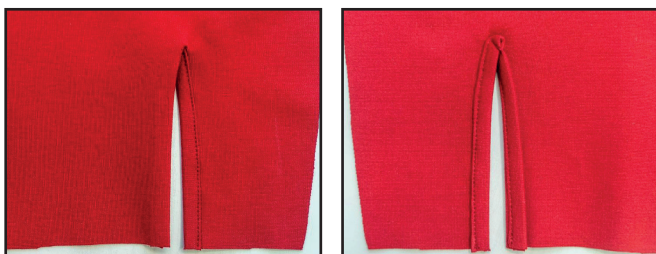
Stitch it on the right side 1 mm (1/16") from the edge. Make sure that the sleeve placket is stitched on the wrong side as evenly as on the right side. Remove the basting stitches and press it.

44



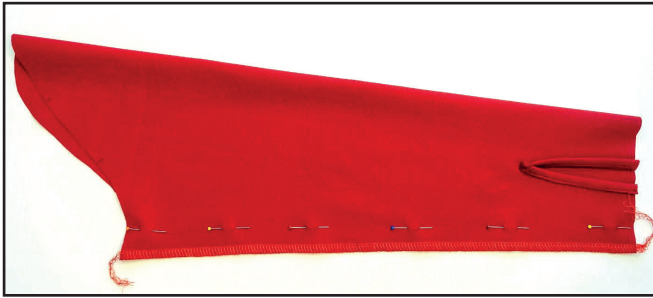
Trim excess slit placket. Fold the slit in half right sides together and stitch a diagonal seam, like a dart, at the slit top.

45



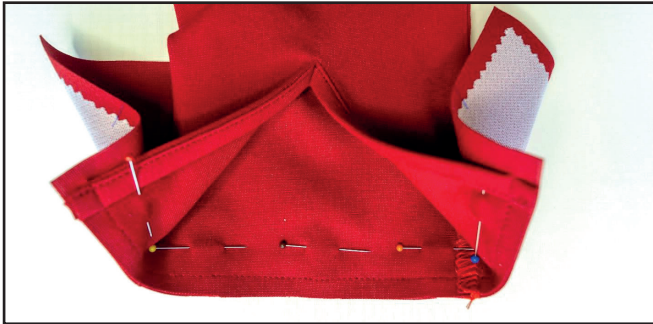
Turn the placket of the front slit edge inside (the edge is further than the side sleeve edge) and press it. Press the placket of the slit back edge. The edge also becomes an extension for the fastener.

46



Pin the sleeve along the side seam. Serge the seams. Press the seam allowances towards the front.

47



Pin the cuff to the sleeve end, with right sides together. Stitch it in place 7 mm (1/4") from the edge. Press the seam allowances towards the cuff.

48



Fold the cuff in half right sides together. Pin the short side edges, turning the seam allowances under to the wrong side. Stitch the side edges 7 mm (1/4") from the edge.

49



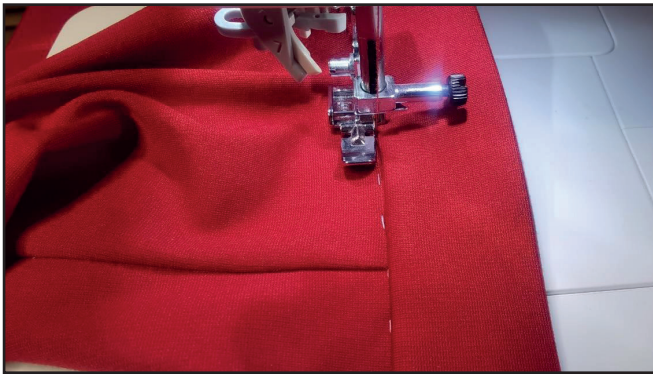
Trim the seam allowances right at the corner points. Turn the cuff out and press it.

50



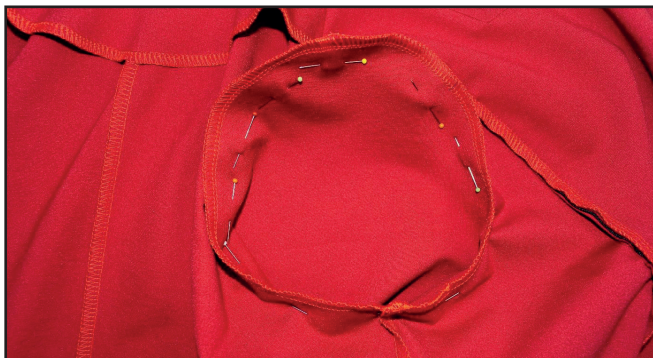
Place the folded edge over the seam line. Then hand-baste along the fold line.

51



Topstitch on the cuff right side, sewing exactly along the seam of attaching the cuff to the sleeve end. Use the unilateral zipper presser foot for it. Another cuff edge should be exactly in the seam. If this step seems difficult, you can sew the edge with the blind hand stitch. Remove the basting stitches and press the cuff.

52



With right sides together, pin the sleeve into the armhole, aligning the marks and the side seams. Serge the sleeve in place. The seam is pressed on the edge. Repeat the same steps with the opposite sleeve (steps 41 - 52).

53



Transfer from the pattern the marks for the snap buttons, shoulder marks and the cuffs. Punch 2 mm (1/16") holes with a Hole Punch or scissors. Attach the snap buttons with a Snap Press, a Snap Setter or a Hammer Tool.

54



Remove the basting stitches, trim and hide the thread tails and press once again. The dress is ready!

ELINA PATYKOVA

ПРО ШИТЬЕ

**THANK YOU FOR JOINING MY TEAM AND ME!
SHARE YOUR WORKS IN INSTAGRAM AND MY
GROUP IN VKONTAKTE. HOPE YOU WILL STAY
WITH US FOR OUR NEXT PROJECT!**