

BARBIE DRESS FOR WOMEN

SKILL LEVEL



INSTRUCTIONS FOR SEWING

ELINA PATYKOVA

ПРО ШИТЬЕ



ELINA_PATYKOVA



ELINA-PATYKOVA.RU



VK.COM/ELINA_PATYKOVA



YOU WILL NEED THE FOLLOWING MATERIALS:

- cotton lycra french terry,
- invisible zipper – 2 pcs,
- matching threads,
- Jersey 70 - 75 or Stretch 70 - 75 needles

A

Check the pattern for amount of fabric to take, according to your size. Note: if the width of the fabric differs from the one specified in the table, the length of the cut is likely to be different. The fabric must be prepared for sewing: washed in warm water, dried and ironed.

B

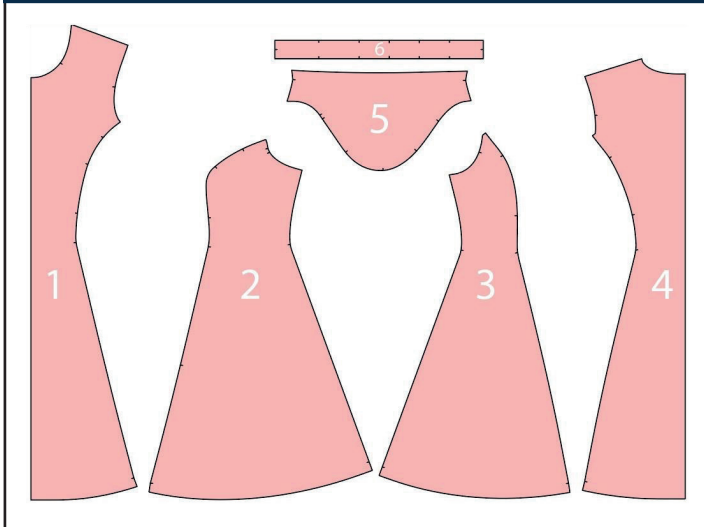
Let us start the cutting. Print and glue all the paper patterns. When printing, do not forget to check the size of the test square.

C

Put the paper pattern pieces onto the fabric. It is important to check that the grain is straight. Pin the paper pattern pieces to the fabric gently and cut the fabric along the outline. Note: seam allowance is already included. Transfer all the necessary marks from the pattern onto the wrong side of your fabric.

**NOW YOU HAVE
ALL THE PIECES:**

DRESS PIECES:



- ① center front - cut 1 on the fold
- ② side front - cut 2
- ③ side back - cut 2
- ④ center back - cut 1 on the fold
- ⑤ sleeve - cut 2
- ⑥ neckband - cut 1

NOW WE CAN START SEWING

SYMBOLS:



straight stitch



the stitch length in (mm)



flat lock stitch



zigzag stitch



the stitch width in (mm)



3-Step Zigzag Seam Finishing



unilateral zipper foot



universal presser foot



invisible presser foot



pinning

You should lockstitch the seam and trim the thread tails or tie the seam thread tails and hide them into the seam after sewing a serger stitch or cover seaming chain stitch.



3-thread serger stitch



4-thread serger stitch

NOTE:

A

4-thread serger stitch

If you do not have a serger, you can use stretch stitches available on your sewing machine, or at least, a zigzag stitch.

B

3-thread serger stitch

If you do not have a serger, you can replace it with an overedge stitch, or a zigzag stitch.

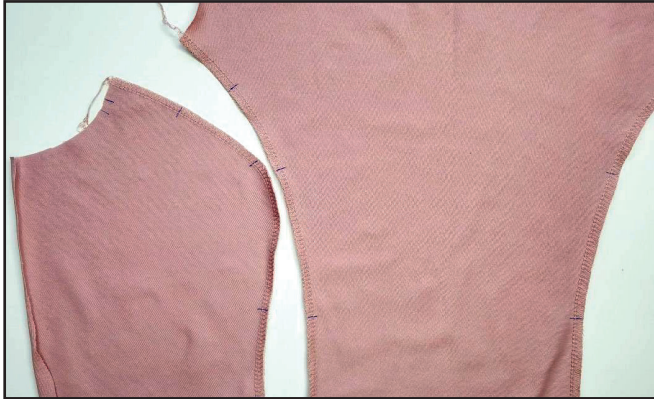
C

flat lock stitch

If you do not have a coverstitch machine, the flat seam can be performed with a) a twin needle on a sewing machine, b) decorative stretch seam on a sewing machine, c) finish the seams with serger and stitch them with a straight stitch.

SEWING GUIDE

1



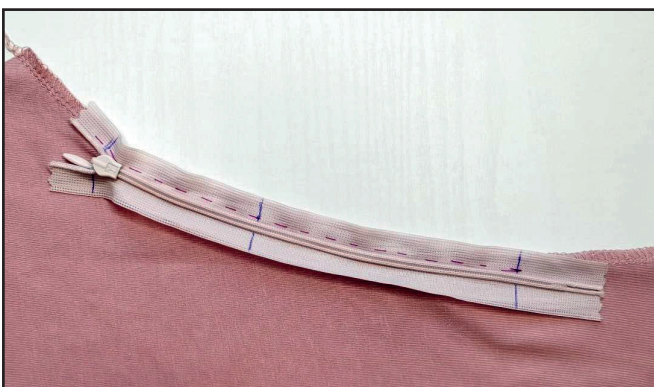
Finish the center front and the side front princess line edges with a serger. Press them.

2



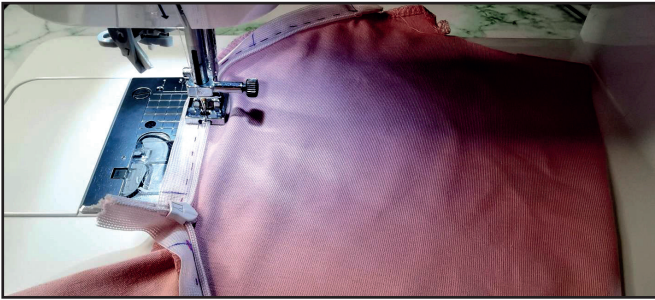
Place one opened invisible zipper tape to the center front princess line with right sides together. The slider can be positioned both up and down depending on which side is more convenient for you to open the zipper. Baste the zipper between the marks, so that the zipper top stop should start 8 mm (5/16") away from the edge. While basting, join the fabric gently for the zipper to sit accurately without waving and forming the folds. Stitch it with an invisible zipper presser foot exactly between the marks.

3



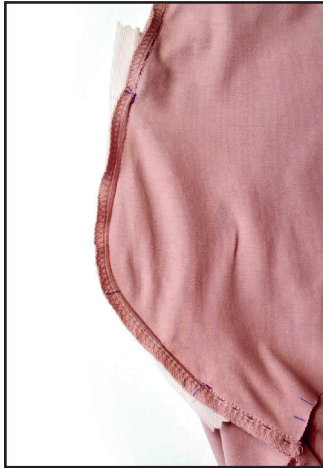
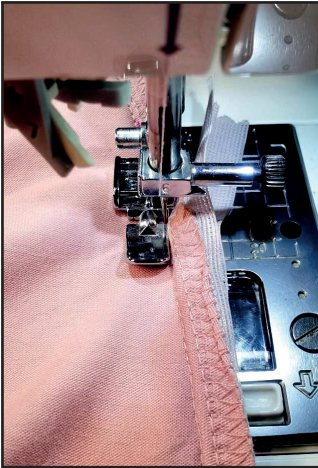
Transfer the marks from the piece on the attached zipper tape. Close the zipper and transfer the marks onto the other tape.

4

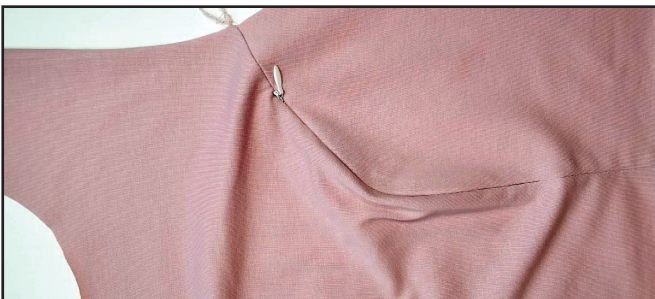


With right sides together, baste the other zipper tape to the side front aligning the marks. Stitch the zipper with an invisible zipper presser foot.

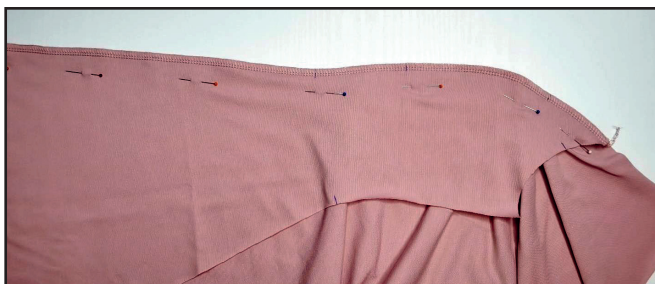
5



Hand-baste the princess line seam above and below the zipper. Stitch it 8 mm (5/16") in from the edge with a unilateral zipper presser foot. Finish the seam exactly at the beginning of the zipper attaching seam. Press the seam allowances open. Repeat the same steps with the second zipper. (steps 1 -5).



6



If you are not going to use the zippers for feeding a baby, skip steps 1 - 5 and stitch the center front and the side front in the same way as the back pieces, we'll be stitching later. Pin the center front

and the side front along the princess seam aligning the marks. Serge the pieces. Repeat the same steps with the opposite side back. Press the seam allowances towards the back center.

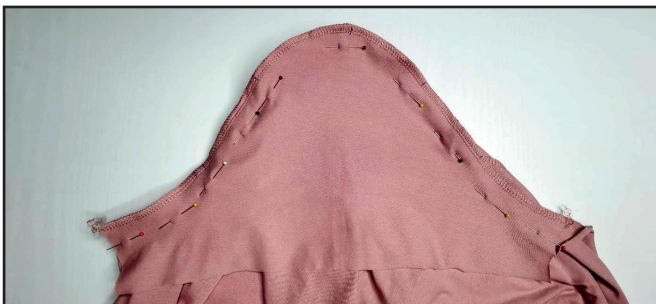
7



4 2,5-3,5 7

Pin the front and the back shoulders with right sides together. Serge them. Press the seam allowances flat towards the front.

8



4 2,5-3,5 7

With right sides together, pin the sleeve into the armhole, aligning all the marks. Serge it. Press the seam allowance towards the front and the back. Repeat the same steps with the opposite sleeve.

9

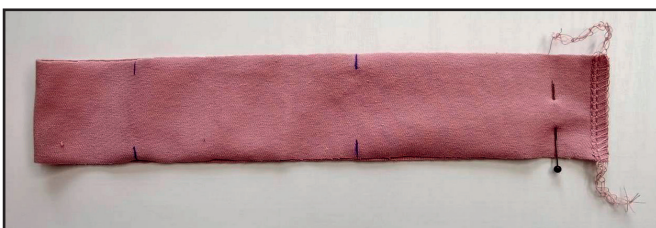


4 2,5-3,5 7

Pin the back and the front along the side seam with right sides together. Serge the pieces. Place the sleeve attaching seam allowances in different directions to avoid excess

thickening. Press the seam allowances towards the front. Repeat the same steps with the opposite side seam.

10



4 2,5-3,5 7

Serge the neckband short edges having previously pinned them.

11



To avoid excess thickening when stitching the neckband, press the seam allowances into different directions.

12



With wrong sides together, fold the neckband in half lengthways and press it. At the same time, shape the neckline with an iron, gently stretching the raw edges and ironing the fold. For convenience, the neckband can be pinned at the marked places.

13



Measure the back neckline. Cut a strip of main fabric 25 mm (1") wide and 20 mm (13/16") longer than back neckline length.

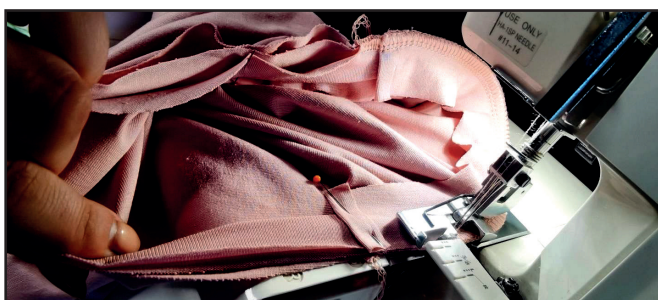
14



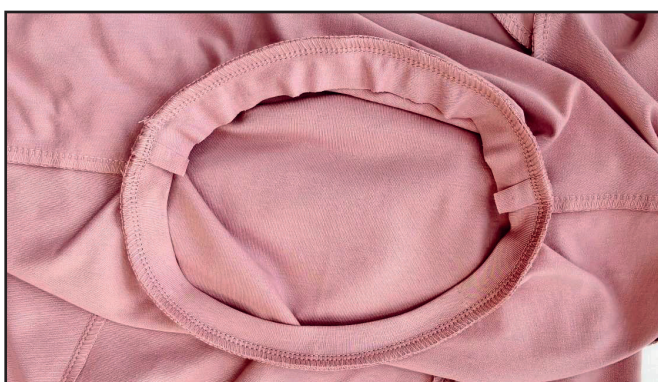
Pin the neckband to the dress neckline right side, aligning the centers and the shoulder seams with the marks. Aligning the edges, pin the strip along the back neckline on the neckband wrong side. Place the strip with right side to the neckline between the shoulder

seams. Fold the strip ends 10 mm (3/8") to the wrong side. The neckband should be between the dress neckline and the strip.

15



Serge the neckband and the strip. While serging, stretch the neckband evenly but avoid stretching the neckline itself. Press the seam and the strip down.

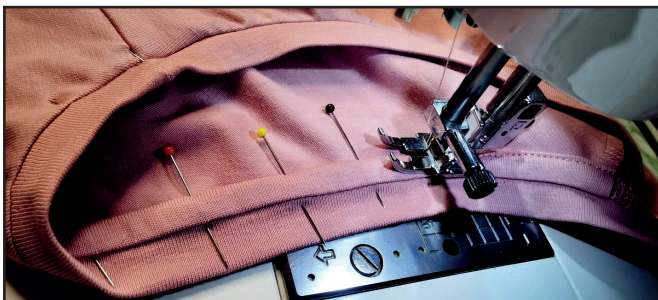


16



Place the strip raw edge over the seam allowance and pin it to the neckline.

17



Stitch the strip to the back 1 mm (1/16") in from the edge covering the serged seam. Press the back neckline.



18



Draw lines along the garment and the sleeve lower hems 40 mm (1 9/16") from the edge. Use the lines to fold the hems 20 mm (13/16") up to the wrong side. Pin, baste or glue the folded hems. Press the dress and the sleeves lower hems into position.

19



Stitch the dress and the sleeve lower hems by a coverstitch machine. Tie the seam thread tails on the wrong side and hide them into the seam. Press the seams.

18



Remove the basting stitches, trim the thread tails and press once again. The dress is ready!

ELINA PATYKOVA

ПРО ШИТЬЕ

**THANK YOU FOR JOINING MY TEAM AND ME!
SHARE YOUR WORKS IN INSTAGRAM AND MY
GROUP IN VKONTAKTE. HOPE YOU WILL STAY
WITH US FOR OUR NEXT PROJECT!**