

PANTS «CITY» FOR WOMEN

SKILL LEVEL



INSTRUCTIONS FOR SEWING

ELINA PATYKOVA

ПРО ШИТЬЕ



ELINA_PATYKOVA



ELINA-PATYKOVA.RU



VK.COM/ELINA_PATYKOVA



FOR SEWING YOU WILL NEED THE FOLLOWING MATERIALS:

- french terry or jersey,
- fusible interfacing for stretchy fabric,
- elastic 3,5 cm (1/8"),
- Alfa snap buttons 12.5 mm (1/2") 9 pcs.,
- matching threads,
- kantenband

A

Check the pattern for amount of fabric to take according to your size. Note: if the width of the fabric differs from the one specified in the table, the length of the cut is likely to be different. The required length of the elastic is indicated on the pants waistband patterns. Before beginning your sewing project, wash the fabric on warm, dry and iron it.

B

Let us start the cutting. Print and glue all the paper patterns. When printing, do not forget to check the size of the test square.

C

Put the paper pattern pieces onto the fabric. It is important to check that the grain is straight. Pin the paper pattern pieces to the fabric gently and cut the fabric along them. Note: seam allowance is already included. Transfer any necessary marks from the pattern onto the wrong side of your fabric.

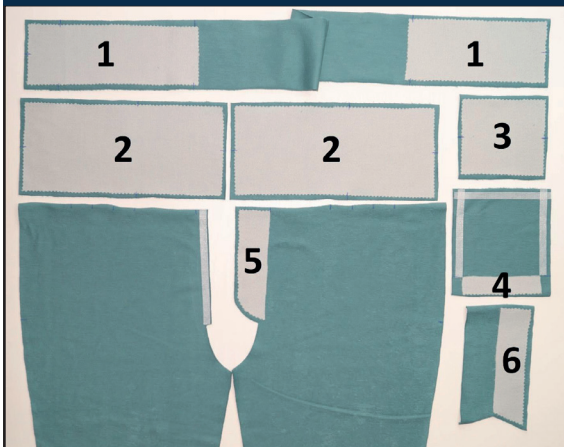
NOW YOU HAVE ALL THE PIECES:

PANTS PIECES:



- ❶ front- cut 2
- ❷ back- cut 2
- ❸ yoke – cut 1 on the fold
- ❹ pocket flap - cut 1
- ❺ pocket - cut 1
- ❻ fly shield – cut 1 on the fold
- ❼ waistband - cut 1
- ❽ cuff - cut 2
- ❾ slit facing - cut 2

YOU SHOULD REINFORCE SOME PARTS WITH THE FUSIBLE INTERFACING:



- ❶ waistband fronts
- ❷ cuffs
- ❸ pocket flap
- ❹ pocket top edge fold
- ❺ fly of the front right pant leg
- ❻ a half of the fly shield

Cut the interfacing parts with 2 mm (1/16") seam allowances only, not to make the seams too thick.



Reinforce the pocket side and low edges with kantenband to avoid seams stretching. Cut the fly on the front left pant leg along the line, indicated on the pattern. Reinforce this edge with kantenband too.

NOW WE CAN START SEWING

SYMBOLS:



straight stitch



the stitch length in (mm)



flat lock stitch



zigzag stitch



the stitch width in (mm)



3-Step Zigzag Seam Finishing



unilateral zipper foot



universal presser foot



invisible presser foot



pinning

You should lockstitch the seam and trim the thread tails or tie the seam thread tails and hide them into the seam after sewing a serger stitch or cover seaming chain stitch.



3-thread serger stitch



4-thread serger stitch

NOTE:

A

4-thread serger stitch

If you do not have a serger, you can use stretch stitches available on your sewing machine, or at least, a zigzag stitch.

B

3-thread serger stitch

If you do not have a serger, you can replace it with an overedge stitch, or a zigzag stitch.

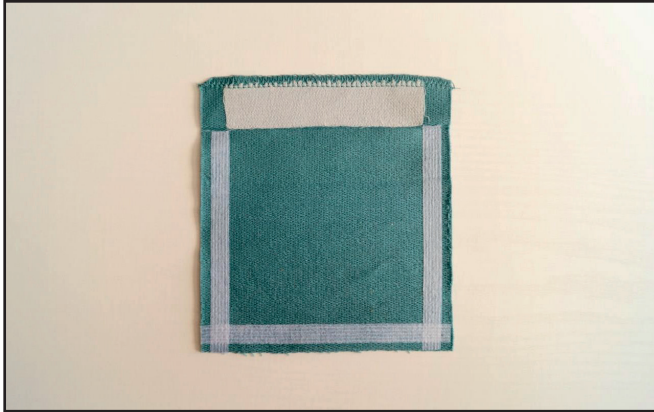
C

flat lock stitch

If you do not have a coverstitch machine, the flat seam can be performed with a) a twin needle on a sewing machine, b) decorative stretch seam on a sewing machine, c) finish the seams with serger and stitch them with a straight stitch.

SEWING GUIDE

1



Finish the pocket top edge with a serger. Press it.

2



Fold the pocket top edge and press 3 cm (1 3/16") of it to the wrong side. Topstitch the top hem down 2,5 cm (1") from the edge. Press the pocket.

3



Fold in the pocket bottom corners at 45°. Mark the seam line at 90° to the fold. The corner top should coincide with the corner of the ready pocket.

4



Stitch the corners according to the applied marking. Trim the seam allowance 3 mm (1/8") from the seam.

5

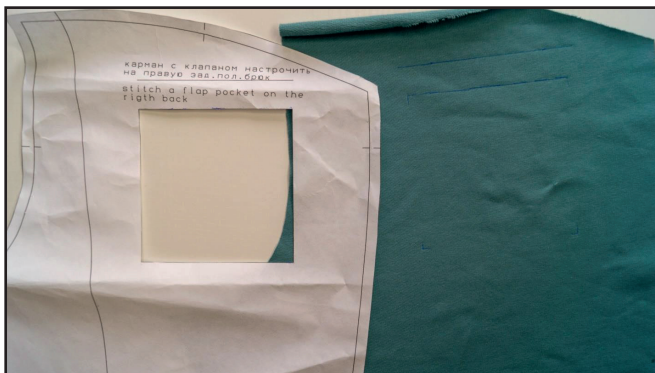
5



Turn the corners inside out and form a pocket. Press the edges of the pocket 15 mm (9/16") to the wrong side. For convenience, you can also baste the allowances. Here is the Erich Krause stationery glue pencil, it securely fixes the seam allowances, easily washes off at the first wash, leaving no trace. You can

also use special pencil glues for textiles, such as PRYM. The pocket is now ready to attach.

6



Mark the position of the pocket and the flap on the right side of the right pants back.

7



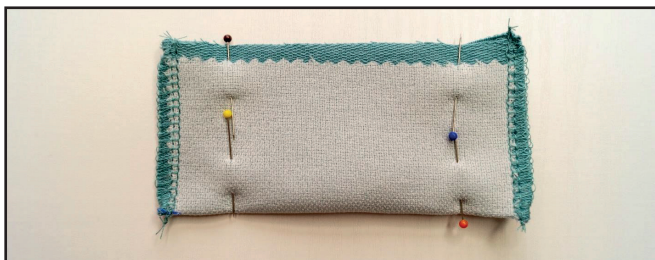
Pin, baste or glue the pocket in place on the pants back.

8



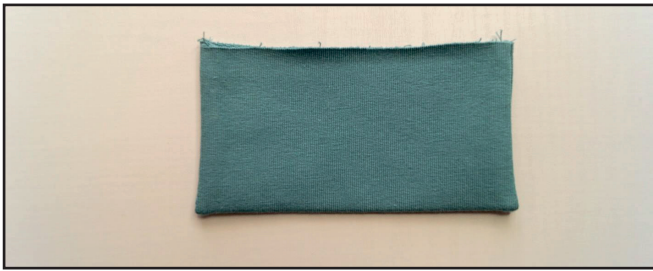
Topstitch the pocket in place about 5 mm (3/16") from the fold. Backstitch at the pocket top corners to secure them. Press the pocket.

9



Fold the pocket flap in half. Pin the side edges and then serge them. Tie the thread tails at the end of the seam.

10



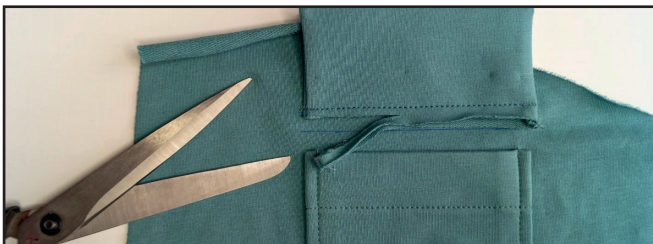
Turn the flap through to the right side and press it. Note: one of the open edges is slightly longer than the other. It is the flap's right side.

11



On the pants right back draw a parallel line 10 mm (3/8") below the flap stitching line. Pin the flap's open edge to this line. The flap is placed right side to the right side of the garment. Mark the seam line 10 mm (3/8") from the edge. Stitch the flap to the pant leg.

12



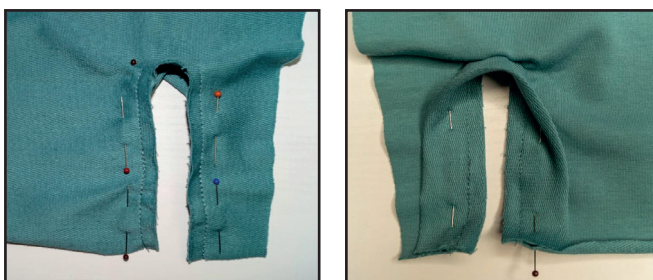
Trim the pocket seam allowance close to the seam. Press the flap into place.

13



Topstitch the pocket flap 7 mm (1/4") from the seam.

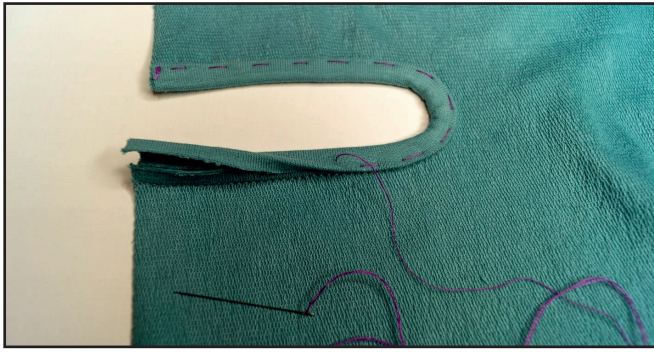
14



Pin, slightly stretching, the slits facings to the pants slits, with right sides together. Stitch the facings in place 7 mm (1/4") from the edge. Begin stitching from the pant leg side making sure that no creases are

formed along the slit. Press the seam allowances to the facing.

15



Wrap the facing strip, edge turned under, to the wrong side around the seam allowance. Hand-stitch it so that the facing will extend above the seam. Repeat the same steps with the opposite slit.

16



Stitch it on the right side 1mm (1/16") from the fold. Make sure that the facing is stitched on the wrong side as evenly as on the right side. Remove the basting stitches and press. Repeat the same steps with the opposite slit.

17



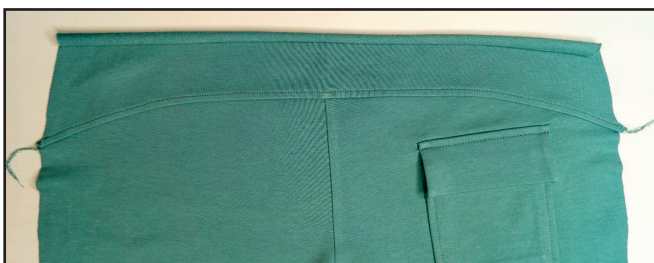
Place the two pants backs right sides together. Pin the crotch seam. Serge it. Press the seam allowances towards the right side.

18



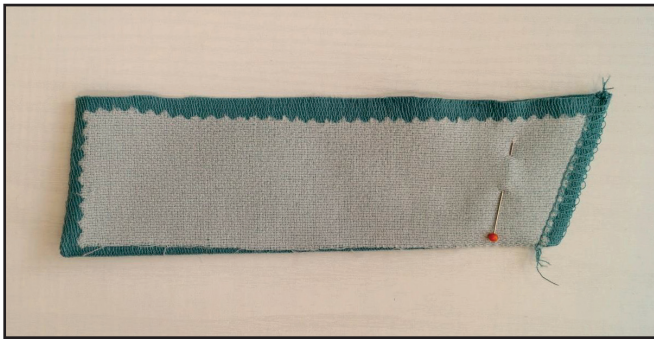
Pin the yoke to the pants back right sides together. Serge it. Press the seam allowances flat towards the yoke.

19



Topstitch the yoke 5 mm (3/16") from the seam. Press the seam.

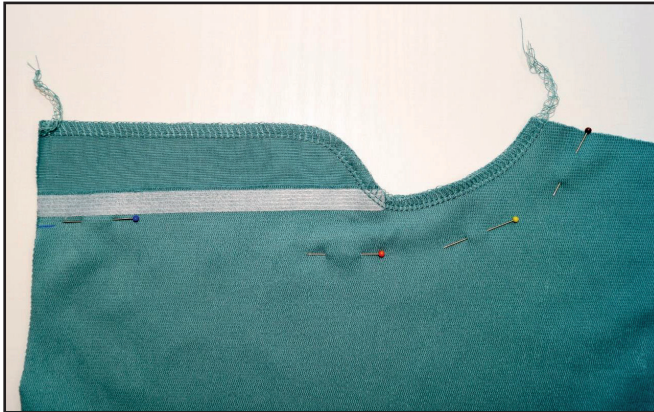
20



4 2,5-3,5 7

Fold the fly shield in half right sides together. Pin the lower edges and serge them. Turn the fly shield through and press it. Tie the thread tails at the end of the seam.

21



4 2,5-3,5 7

Place both pants fronts right sides together. Pin the crotch seam. Serge the seam and finish the fly on the right pant leg. Press the seam allowances towards the right side.

22



4 2,5-3,5 7

Pin the fly shield to the front crotch edge of the left pant leg. Serge the seam up to the end of the fly shield. To sew the seam up to the end of the fly shield, make a small notch on the left pant leg near the crotch seam. Tie the seam thread tails. Press the seam allowances towards the left pant leg.

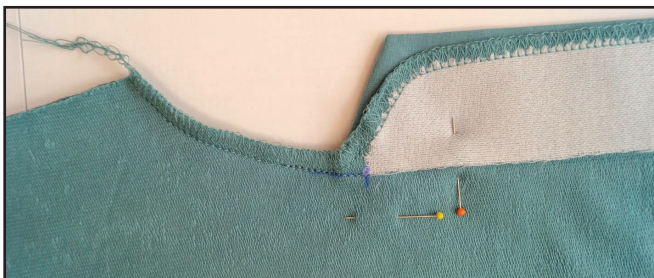
23



2-2,6

Topstitch the pant leg along the fly shield 1 mm (1/16") from the seam. Press it.

24



2-2,6

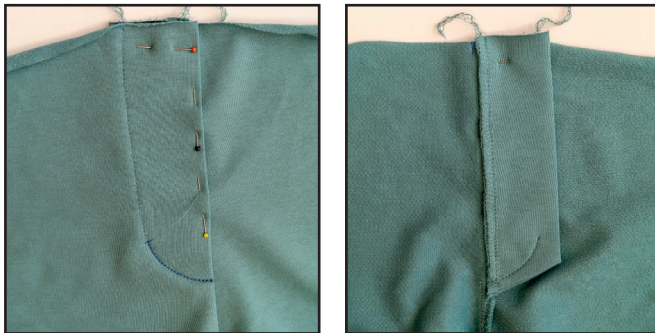
Place the pants fronts right sides together and stitch the crotch seam along the marked line transferred from the pattern.

25



Fold the fly extension, press and then pin it. Transfer the seam line from the pattern and topstitch finishing the seam 30 mm (1 3/16") before the crotch seam.

26



Pin the remaining fronts closed on the center front line to the waist edge. Stitch 2 -3 cm (13/16-1 3/16") at the bottom of the fly finishing the seam exactly at the beginning of the previous seam, capturing the fly shield into the seam.

27



Pin the folds on the waistband and the pant legs and stitch them 5 mm (3/16") from the edge.

28



Place the pants fronts and backs right sides together. Pin them along the side seams and inseams, matching the marks and the crotch seam. Serge both pant legs together. Press the seams towards the front.

29



Pin the interfaced waistband to the waist edge right sides together, matching the marks. Stitch it 10 mm (3/8") from the edge.

30



Press the seam allowances flat towards the waistband. Press the folded waistband along the fold line, indicated on the pattern.

31



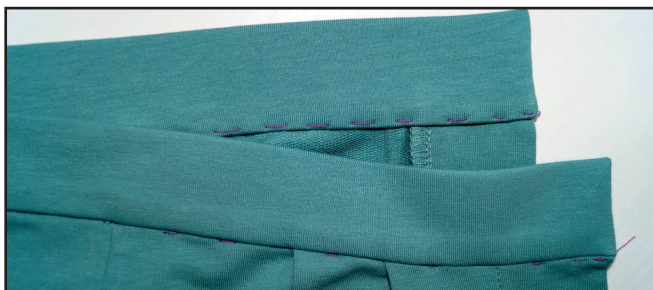
Fold the waistband lengthwise, right sides inside. Pin the short side edges, turning the edges under to the wrong side. Stitch the short edges.

32



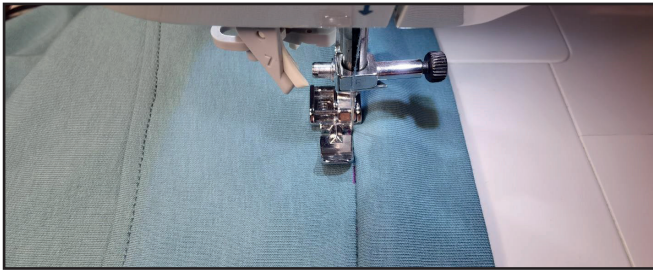
Trim the seam allowance corners. Turn the waistband out and press it.

33



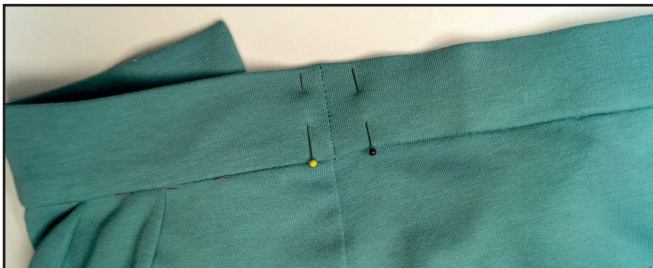
Place the folded edge over the seam line. Pin and then hand-baste along the fold line. Press the waistband.

34



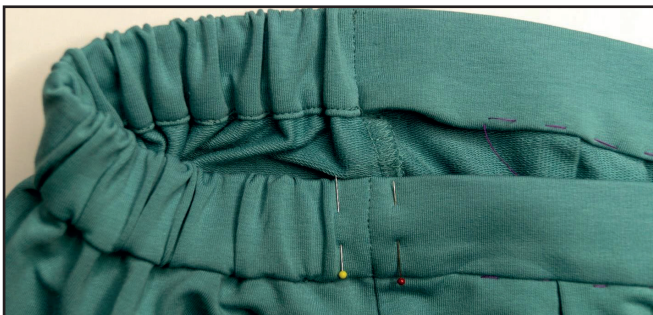
Topstitch on the waistband right side, sewing exactly along the seam of attaching the waistband. Use a unilateral zipper presser foot for it. Another waistband edge should be exactly in the seam. If this step seems difficult, you can sew the edge with a blind hand stitch. Stitch it between the side seams. Take elastic band 3 - 3.5 cm (1 3/16-1 3/8") wide, the length is indicated on the waistband pattern.

35



Insert the elastic through one of the side seams and pin it. To fix the elastic, stitch across the waistband, continuing the side seam.

36



Stretch the elastic up to the opposite side seam and also pin it. To fix the elastic, stitch across the waistband, continuing the side seam.

37



Stitch the waistband front pieces using a unilateral zipper presser foot, sewing exactly along the waistband attaching seam.

38



Press the folded cuff along the fold line, indicated on the pattern. Pin the cuff to the pant leg opening aligning the marks. Stitch the seams 10 mm (3/8") from the edge. Press the seam allowances to the cuff.

39



Fold the cuff in half, right sides together. Pin the short side edges, turning the edges under to the wrong side. Stitch the short edges 10 mm (3/8") from the edge. The end of the seam, stitching the seam allowance for the snap buttons, should coincide with the cuff attaching seam end.

40



Trim the seam allowances corners. Turn the cuff out and press it.

41



Place the folded edge over the seam line. Pin and then hand-baste along the fold line. Stitch the cuff with the unilateral zipper presser foot sewing exactly along the cuff attaching seam. Remove the basting stitches and press the cuff. Repeat the same steps with the opposite cuff.

42



Mark the places for snap buttons, as indicated on the pattern. Punch 2 mm (1/16") holes with a Hole Punch. Attach the snap buttons with a Snap Press, a Snap Setter or a Hammer Tool.

43



Remove the basting stitches, trim the thread tails and press once again. The pants are ready!

ELINA PATYKOVA

ПРО ШИТЬЕ

**THANK YOU FOR JOINING MY TEAM AND ME!
SHARE YOUR WORKS IN INSTAGRAM AND MY
GROUP IN VKONTAKTE. HOPE YOU WILL STAY
WITH US FOR OUR NEXT PROJECT!**