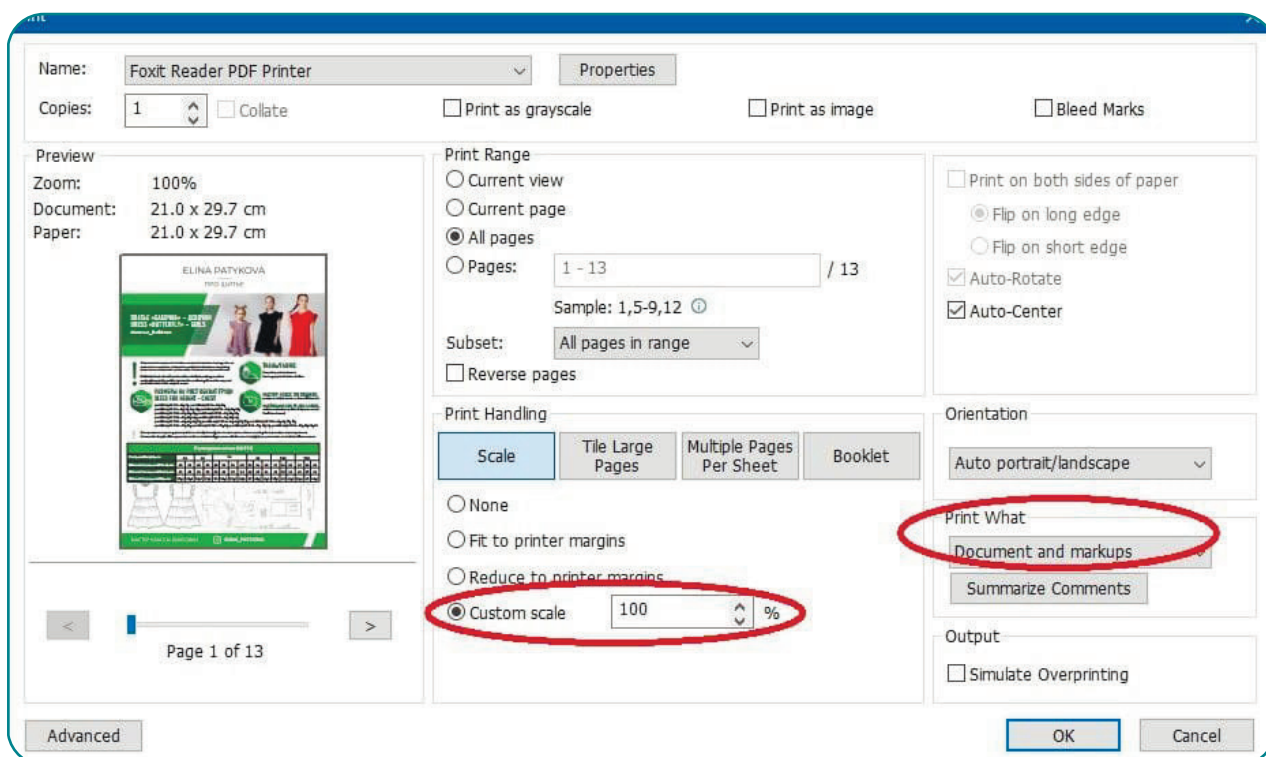
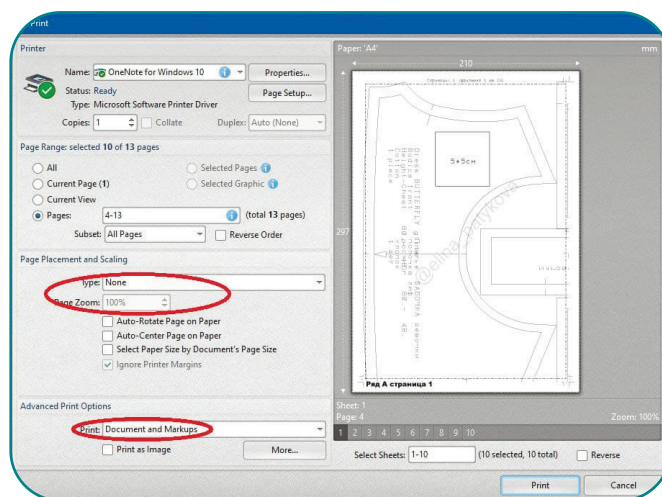


HOW TO PRINT AND GLUE SEWING PATTERNS

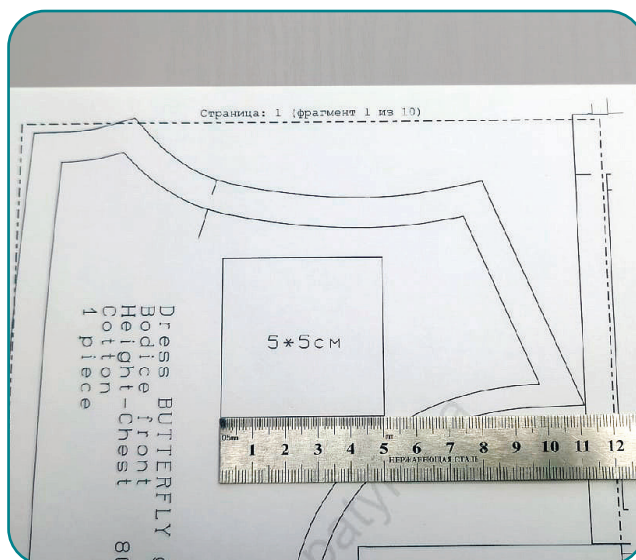
1

Print the pattern. Set the scale to 100% or the actual size, depending on the program you use. To have a test square and margins, you must choose «Document and markups» in the print settings.

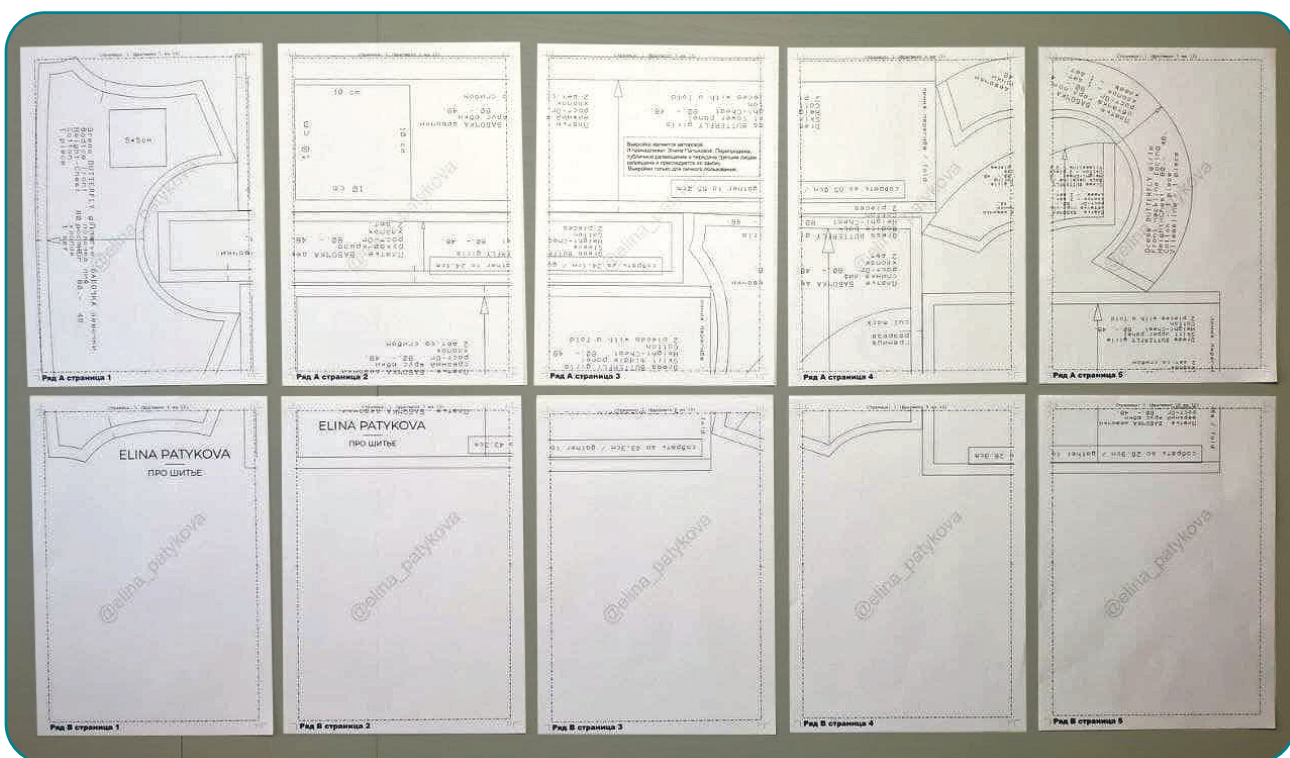
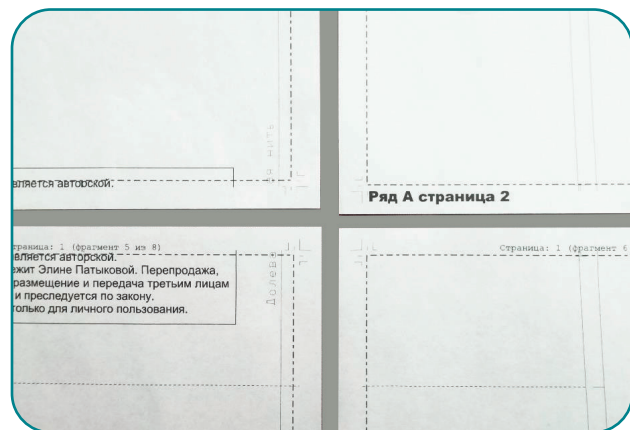


2

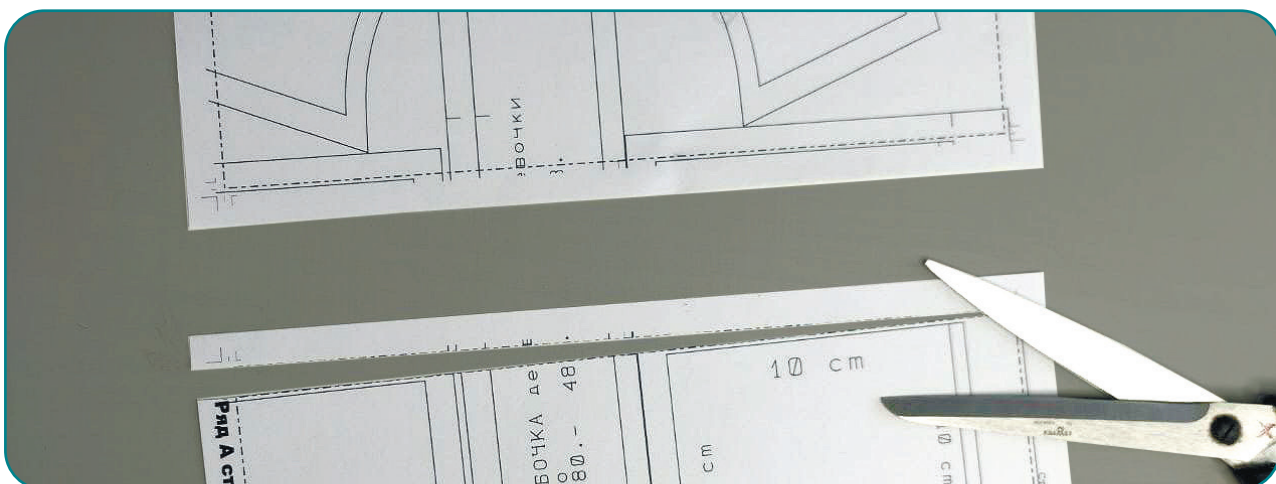
First print the test square. Measure the size of the test square. It needs to match up exactly the size, indicated in it. If it does not match, then try to print with a scale 99% or 101%. Set the scale so that the test square matches the specified size. Then print out the entire pattern.



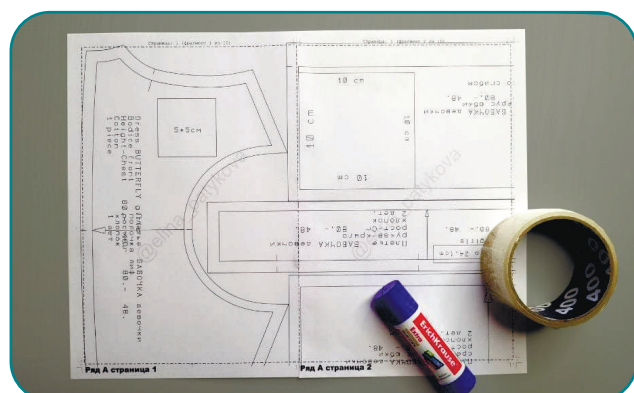
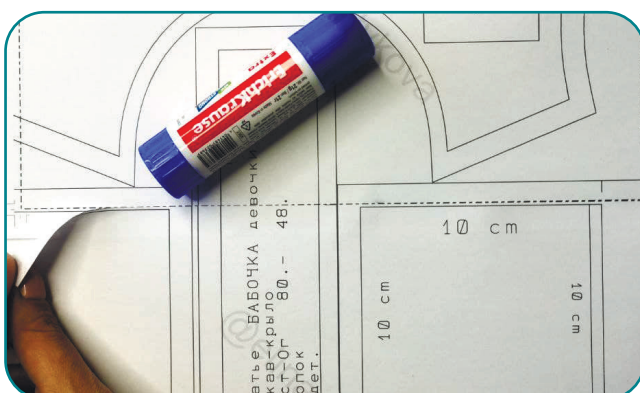
- 3 Line up the pattern in rows and columns. To do it easier, each sheet of paper has a row and a page written on it. If you line up them correctly, you can already see the patterns outlines.



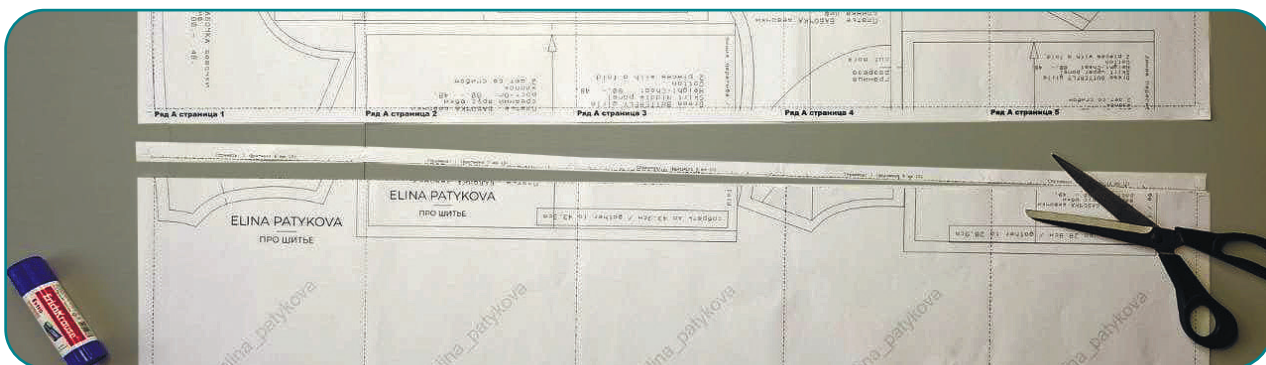
- 4 Take two adjacent sheets of the first row. Cut off the left margins of the right column sheet along the dotted line. Do not worry if the dotted lines extend to the margins.



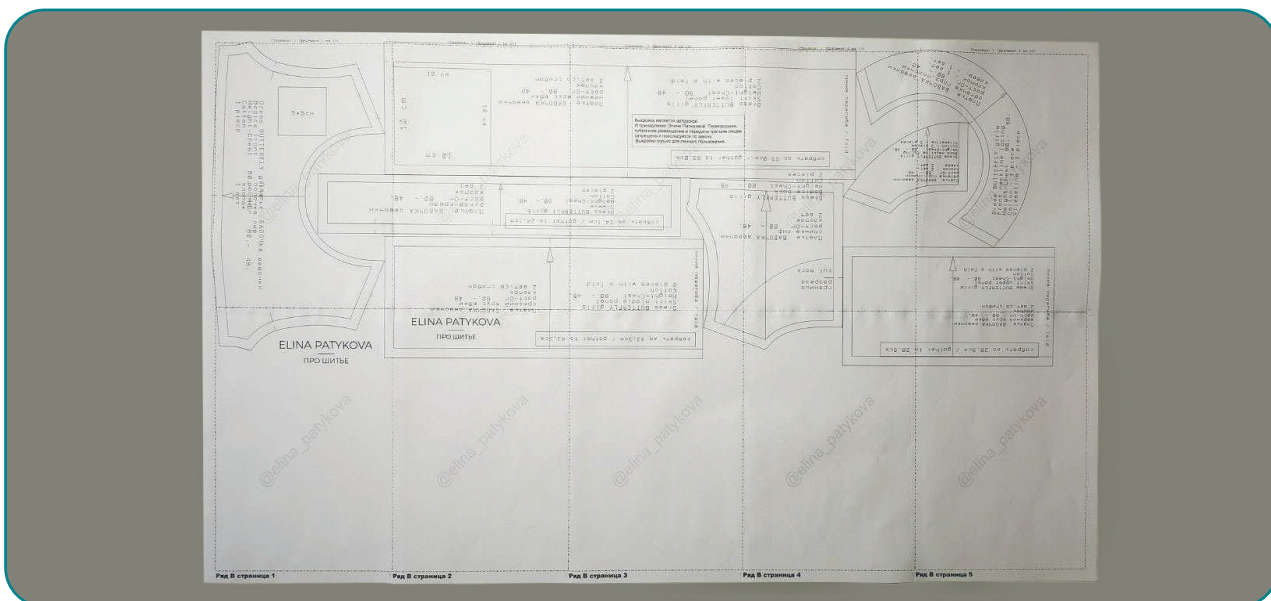
- 5 Glue the sheets with glue or tape, aligning the cut edge with the dotted line. Make sure that the patterns outlines align. Thus, we assemble all the rows in order.



6 Cut off the upper margin along the dotted line at the bottom row.



7 Glue the rows together, making sure that the patterns outlines are aligned. Thus, we assemble the entire sheet of patterns.



8 Glue the sheets with glue or tape, aligning the cut edge with the dotted line. Make sure that the patterns outlines align. Thus, we assemble all the rows in order.

