

PINAFORE DRESS FOR WOMEN OR GIRLS (FRENCH TERRY)

SKILL LEVEL



INSTRUCTIONS FOR SEWING

ELINA PATYKOVA

ПРО ШИТЬЕ



ELINA_PATYKOVA



ELINA-PATYKOVA.RU



VK.COM/ELINA_PATYKOVA



YOU WILL NEED THE FOLLOWING MATERIALS:

- knitted fabric french terry,
- matching threads,
- snap buttons Alfa 4 pcs.,
- Jersey 75 - 80 or Stretch 75 - 80 needles

A

Check the pattern for amount of fabric to take according to your size. Note: if the width of the fabric differs from the one specified in the table, the length of the cut is likely to be different. The fabric must be prepared for sewing: washed in warm water, dried and ironed.

B

Let us start the cutting. Print and glue all the paper patterns. When printing, do not forget to check the size of the test square.

C

Put the paper pattern pieces onto the fabric. It is important to check that the grain is straight. Pin the paper pattern pieces to the fabric gently and cut the fabric along the outline. Note: seam allowance is already included. Transfer all the necessary marks from the pattern onto the wrong side of your fabric.

**NOW YOU HAVE
ALL THE PIECES:**

DRESS PIECES:



- ❶ front - cut 1 on the fold (french terry)
- ❷ back - cut 2 (french terry)
- ❸ pocket - cut 1 (french terry)
- ❹ front facing - cut 1 on the fold (french terry)
- ❺ back facing- cut 1 on the fold (french terry)
- ❻ strap - cut 2 on the fold (french terry)

NOW WE CAN START SEWING

SYMBOLS:



straight stitch



the stitch length in (mm)



flat lock stitch



zigzag stitch



the stitch width in (mm)



3-Step Zigzag Seam Finishing



unilateral zipper foot



universal presser foot



invisible presser foot



pinning

You should lockstitch the seam and trim the thread tails or tie the seam thread tails and hide them into the seam after sewing a serger stitch or cover seaming chain stitch.



3-thread serger stitch



4-thread serger stitch

NOTE:

A

4-thread serger stitch

If you do not have a serger, you can use stretch stitches available on your sewing machine, or at least, a zigzag stitch.

B

3-thread serger stitch

If you do not have a serger, you can replace it with an overedge stitch, or a zigzag stitch.

C

flat lock stitch

If you do not have a coverstitch machine, the flat seam can be performed with a) a twin needle on a sewing machine, b) decorative stretch seam on a sewing machine, c) finish the seams with serger and stitch them with a straight stitch.

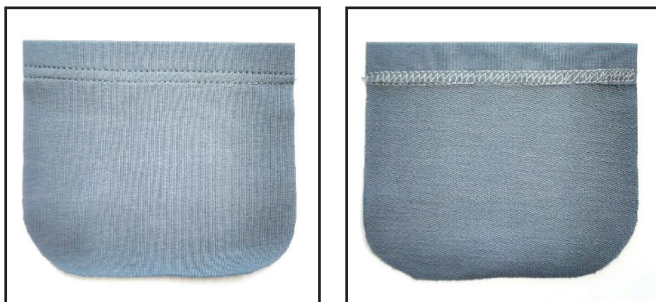
SEWING GUIDE

1



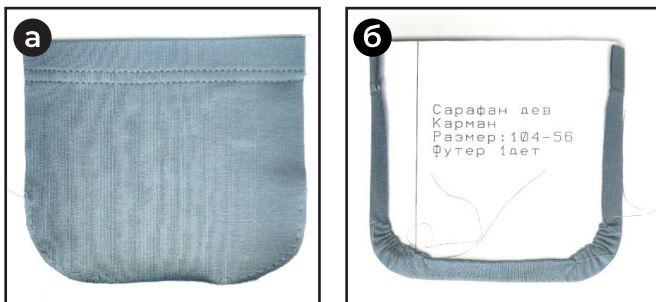
Fold the pocket top edge 20 mm (13/16") to the wrong side. Baste or glue it to the garment. Press it. Fold 35 mm (1 3/8") if you sew a pinafore for an adult.

2



Coverstitch the pocket top edge. Press the pocket.

3

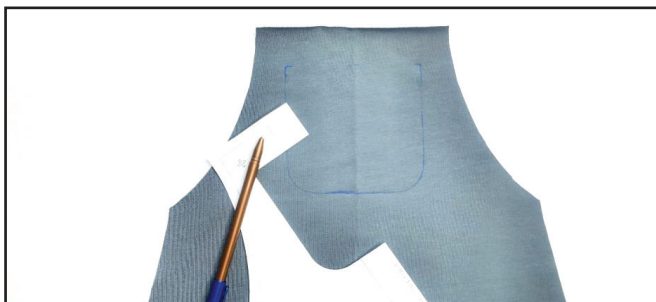


a) Use a long machine stitch through the corners 2 - 3 mm (1/16 - 1/8") in from the edge. Set the maximum stitch length (at 4 - 5 mm), do not backstitch and leave the thread tails at least 30 mm

(1 3/16") long at both sides of the seams.

b) Cut the seam allowances of the pocket paper pattern to use it as a template. Press the seam allowances along the side edges, folded around the template. Pull up the needle threads to tighten the stitching in the curves to shape the corners around the template. Tie the thread tails. Press the pocket curved edges.

4



Transfer the pocket placement marks onto the front with chalk or a vanishing fabric marker.

5

5



Baste or pin the pocket to the front or glue it with a glue-stick.

6



Topstitch the pocket in place about 1 mm (1/16") in from the fold. Press the pocket.

7



You can decorate the pocket top corners with rivets.

8



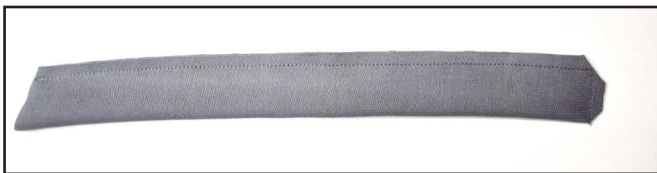
Pin the back pieces along the central seam. Serge them. Press the seam allowances towards one of the back pieces.

9



Fold one strap in half lengthways right sides together and pin it. Stitch the seam down the open long edge and across the short straight edge 7 mm (1/4") in from the edge.

10



Trim the sharp corner points leaving 1 mm (1/16") before the seam.

11



Turn the strap right side out and smooth the corners. Press it.

12



Topstitch around the 3 closed sides of the strap, leaving the one end open. Stitch 5 mm (3/16") in from the edge.

Press the strap. Repeat the process for the other strap (steps 9 - 12). If your pinafore is for an adult, stitch 7 mm (1/4") in from the seam.

13



Serge both facing pieces lower raw edges. To get smooth finish adjust the differential feed ratio to 1.5 - 1.75. Press the seams.

14



Pin the front facing to the front with right sides together along the side curved edges. Serge the pieces. Stitch the back and the back facing in the same way.

15

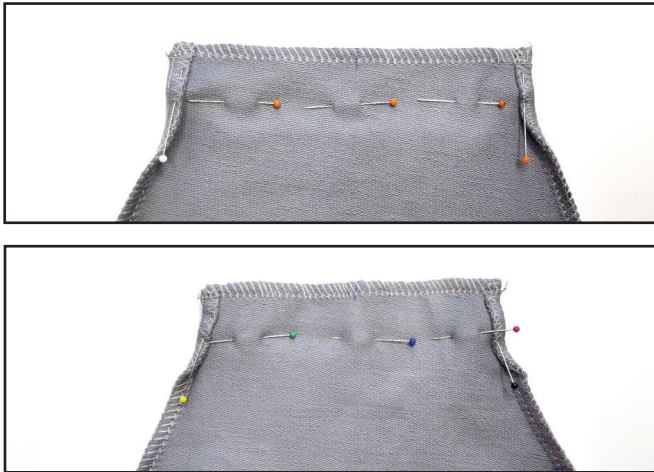


Place the straps between the back and the back facing. Place the shorter strap side edge close to the facing attaching seam. The longer strap side edge will be closer to the center. Align the edges, pin the straps and secure them with straight

seams 5 mm (3/16") in from the edge.

There is also a slight difference in the adult pinafore strap sides. The shorter adult pinafore strap side is on the fold. It is also placed close to the facing attaching seam.

16



Pin the front and the front facing along the upper edge with right sides together aligning the centers. Fold the side seam allowances towards the front facing and pin them. Serge the upper edge. Repeat the same steps for the back and back facing upper edge.

17



Turn the back and the front out and smooth the corners. Press and form a roll towards the facings.

18



With right sides together pin the front and the back along the side seams, aligning the marks. Serge the front, the back and the facings with one seam. Align the facing

attaching seams very precisely and, for ease, place the seam allowances into different directions.

19



Fold both facings towards the front along the attaching seam. Align the side seams. Stitch the facing to the side seam along the serged seam leaving 7 mm (1/4") before the fold.

20



Turn the facings out. Press the side seam allowances towards the back. Repeat the same steps for the opposite side seam (steps 18 - 20).

21



Topstitch the back and the front along all the facing attaching seams 5 mm (3/16") in from the edge. Start stitching from the side seam and finish there. Press the seam.
If your pinafore is for an adult, topstitch 7 mm (1/4") in from the seam.

22



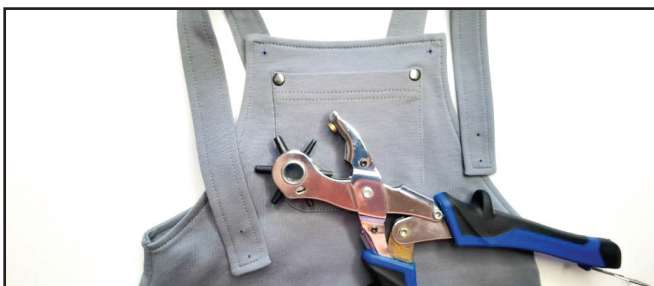
Draw a line along the garment lower hem 40 mm (1 9/16") in from the edge. Use the line to fold the lower hem 20 mm (13/16") up to the wrong side. Pin or glue the lower hem with a glue stick to secure it. Press the garment lower hem. The adult garment lower hem should be fold by 35 mm (1 3/8"). You can draw one more line 70 mm (2 3/4") in from the edge to do this.

23



Hem the garment with a coverstitch machine. Tie the thread tails on the wrong side and hide them into the seam. Press the lower hem.

24



Transfer the snap buttons placement marks onto the front and the straps. Punch 1 - 2 mm (1/16") holes with a Hole Punch or scissors.

25



Attach the snap buttons with a Snap Press.

26



Remove the basting stitches, trim and hide the thread tails and press the garment once again. The pinafore is ready!

ELINA PATYKOVA

ПРО ШИТЬЕ

**THANK YOU FOR JOINING MY TEAM AND ME!
SHARE YOUR WORKS IN INSTAGRAM AND MY
GROUP IN VKONTAKTE. HOPE YOU WILL STAY
WITH US FOR OUR NEXT PROJECT!**