

SHIRT BOHO FOR WOMEN

SKILL LEVEL



INSTRUCTIONS FOR SEWING

ELINA PATYKOVA

ПРО ШИТЬЕ



ELINA_PATYKOVA



ELINA-PATYKOVA.RU



VK.COM/ELINA_PATYKOVA



TO SEW THE SHIRT YOU WILL NEED:

- french terry or jersey,
- woven fusible interfacing,
- Alfa snap buttons 12 pcs.,
- a buckle for the belt 50 mm (2"),
- matching threads,
- Jersey 70 - 80 or Stretch 70 - 80 needles.

A

Check the pattern for amount of fabric to take according to your size. Note: if the width of the fabric differs from the one specified in the table, the length of the cut is likely to be different. Before beginning your sewing project, wash the fabric in warm water, dry and iron it.

B

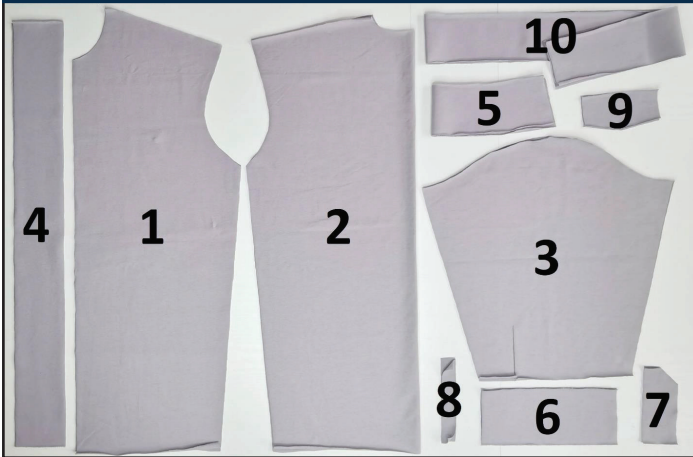
Let us start the cutting. Print and glue all the paper patterns. When printing, do not forget to check the size of the test square.

C

Put the paper pattern pieces onto the fabric. It's important to check that the grain is straight. Pin the paper pattern pieces to the fabric gently and cut the fabric along them. Note: seam allowance is already included. Transfer all the necessary marks from the pattern onto the wrong side of your fabric.

NOW YOU HAVE ALL THE PIECES:

SHIRT PIECES:



- ❶ front - cut 2 (french terry)
- ❷ back - cut 1 on the fold (french terry)
- ❸ sleeve - cut 2 (french terry)
- ❹ front placket - cut 2 on the fold (french terry) and cut 2 on the fold (fusible interfacing)
- ❺ stand collar - cut 2 on the fold (french terry) and cut 2 on the fold (fusible interfacing)
- ❻ cuff - cut 2 on the fold (french terry) and cut 2 on the fold (fusible interfacing)
- ❼ overlap placket - cut 2 (french terry) and cut 2 (fusible interfacing)
- ❽ underlap placket- cut 2 (french terry)
- ❾ pocket flap - cut 2 (french terry) and cut 1 (fusible interfacing)
- ❿ belt - cut 1 on the fold (french terry) and cut 1 on the fold (fusible interfacing)

If the interfacing is too dense, cut the interfacing pieces with 2 - 3 mm (1/16 - 1/8") seam allowances only, to avoid excess thickening of the seams. You can use pinking shears for cutting.

NOW WE CAN START SEWING

SYMBOLS:



straight stitch



the stitch length in (mm)



flat lock stitch



zigzag stitch



the stitch width in (mm)



3-Step Zigzag Seam Finishing



unilateral zipper foot



universal presser foot



invisible presser foot



pinning

You should lockstitch the seam and trim the thread tails or tie the seam thread tails and hide them into the seam after sewing a serger stitch or cover seaming chain stitch.



3-thread serger stitch



4-thread serger stitch

NOTE:

A

4-thread serger stitch

If you do not have a serger, you can use stretch stitches available on your sewing machine, or at least, a zigzag stitch.

B

3-thread serger stitch

If you do not have a serger, you can replace it with an overedge stitch, or a zigzag stitch.

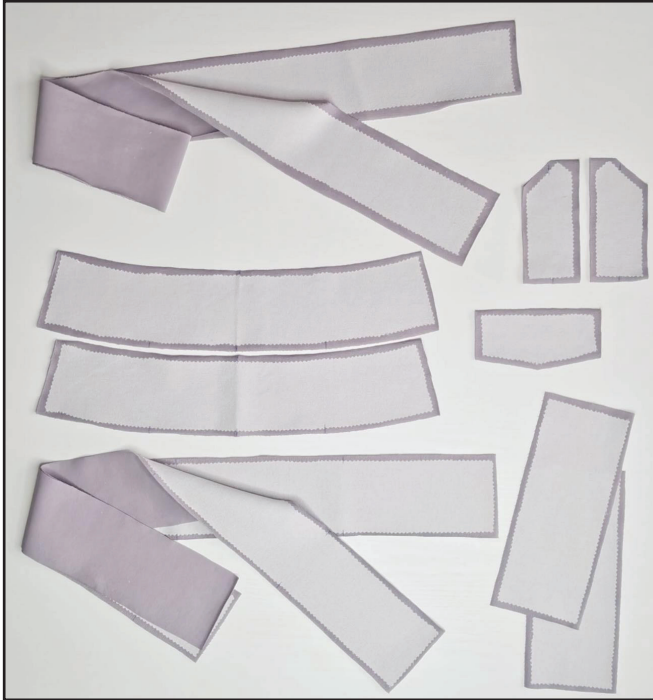
C

flat lock stitch

If you do not have a coverstitch machine, the flat seam can be performed with a) a twin needle on a sewing machine, b) decorative stretch seam on a sewing machine, c) finish the seams with serger and stitch them with a straight stitch.

SEWING GUIDE

1



Fuse the interfacing to the belt, stand collar pieces, cuffs, pocket flap, the front, and the overlap sleeve plackets.

2



Pin two pocket flap pieces right sides together. Stitch the pieces 10 mm (3/8") in from the edge along all the perimeter, except the top edge.

3



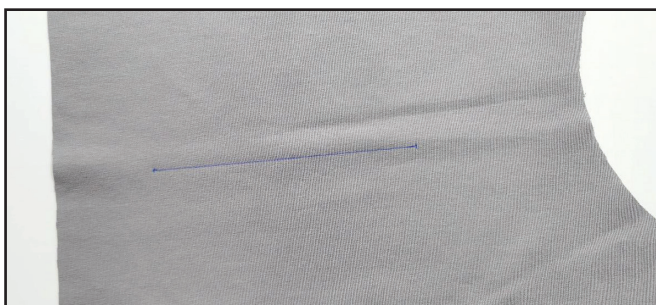
Trim the non-fused flap top edge seam allowance leaving only 3 - 4 mm (1/8"). Trim the fabric right at the bottom corners.

4



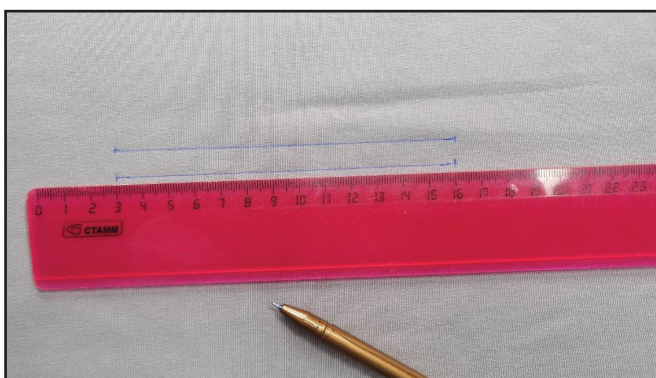
Turn the flap through to the right side and press it with an iron, forming a roll towards the wrong side. Topstitch it 5 mm (3/16") in from the edge.

5



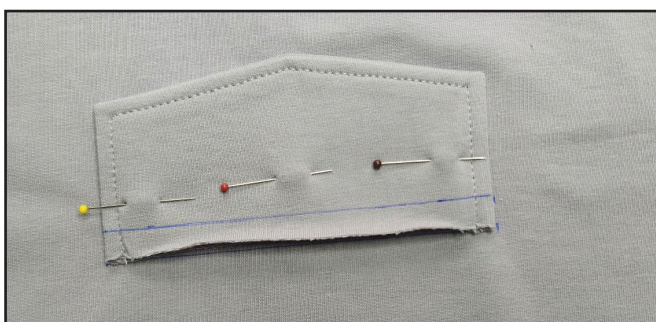
Transfer the position of the pocket flap from the pattern onto the right side of the left front.

6



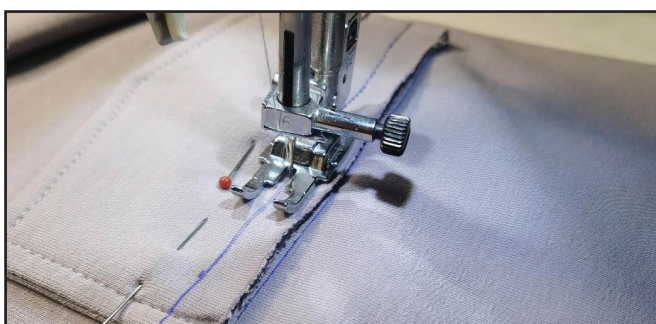
Draw a parallel line 10 mm (3/8") below the flap stitching line to coincide the flap edge with it.

7



Pin the flap open edge to this line. Mark the seam line on the flap 10 mm (3/8") in from the edge.

8



Stitch the flap in place.

9



Trim the pocket flap seam allowance to 3 - 4 mm (1/8") . Press the flap in place.

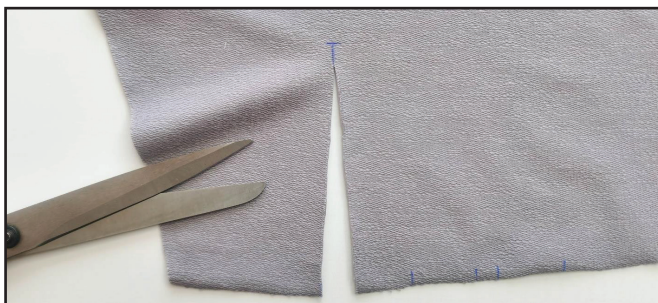
10



2-2,6

Topstitch the flap 5 mm (3/16") away from the seam.

11



Cut the sleeve along the slit line up to 10 mm (1/8") before the slit top point.

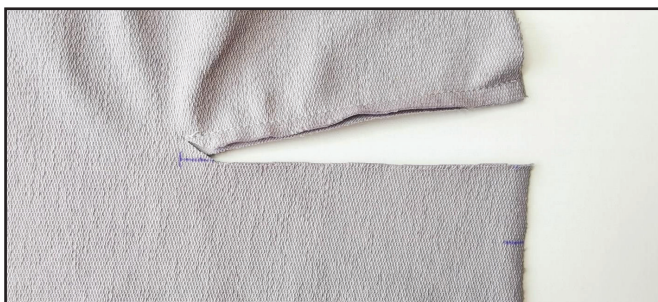
12



2-2,6

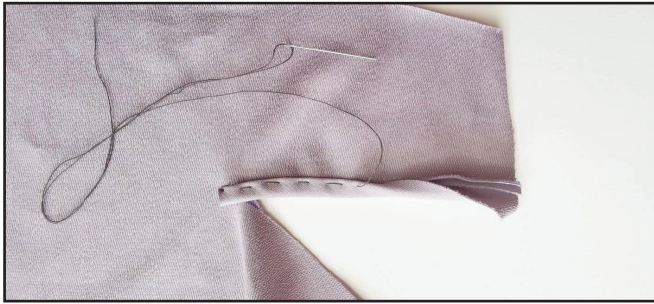
Coincide the underlap placket piece with the closer to the sleeve side seam slit side. Pin the pieces with right sides together. Place the underlap placket piece 10 mm (3/8") above the slit edge and stretch it slightly. Stitch it in place 5 mm (3/16") in from the edge. Start stitching at the slit top point level.

13



Slash diagonally the seam allowance 1 mm (1/16") before the underlap piece attaching seam end. Trim the excess underlap piece fabric. Press the seam allowances towards the underlap piece.

14

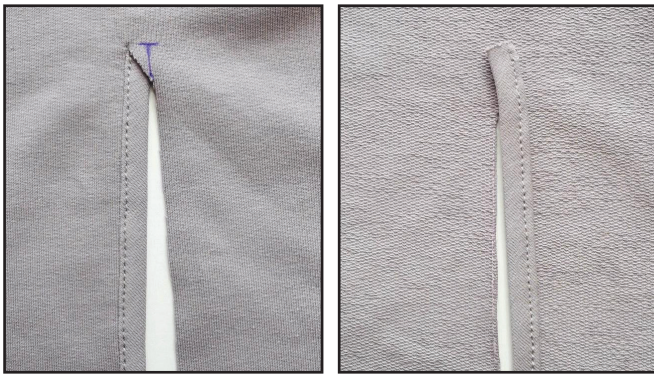


Wrap the underlap piece, edge turned under, to the wrong side around the seam allowance. Hand-stitch it so that the underlap piece will cover the seam. Press it with an iron.

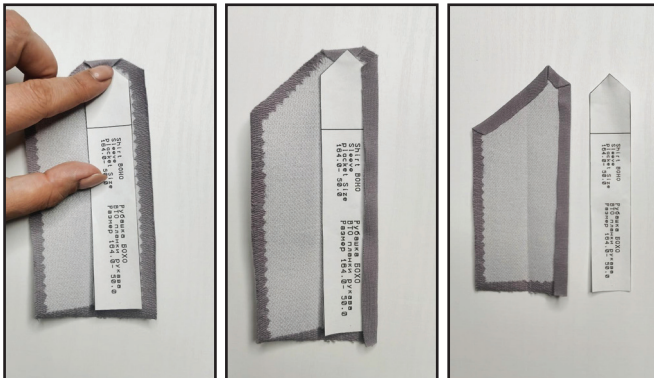
15



Stitch it on the right side 1 mm (1/16") in from the edge. Make sure that the underlap placket is stitched on the wrong side as evenly as on the right side. Remove the basting stitches and press it.

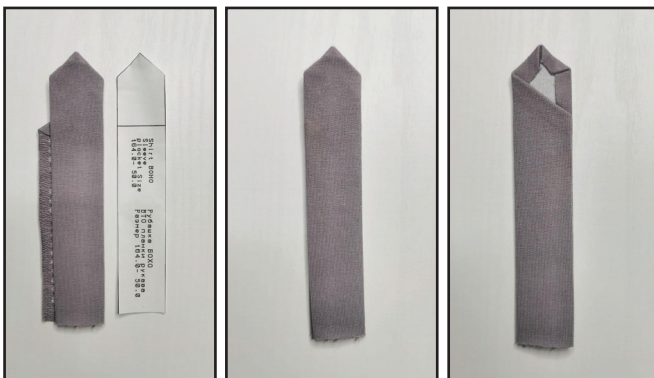


16



Use the sleeve overlap placket WTO paper pattern to press the sleeve overlap placket seam allowances. First press the top corner, then press the side edges. You can use a glue-stick to keep the top seam allowances folded. But the long side edge is not glued.

17



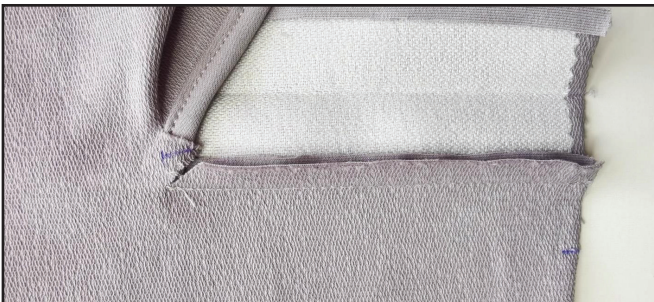
Press the overlap placket in half, then press the overlap packet short edge seam allowance. Make sure that the pressed overlap placket short edge is equal to the slit length.

18



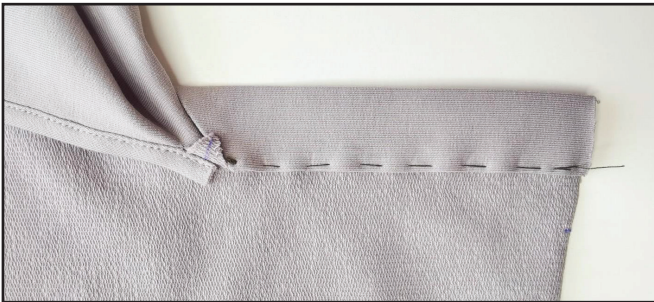
Pin the overlap placket to the slit other side right sides together. Sew on the overlap placket, stitching exactly along the pressed fold. Finish stitching at the slit top point level. Press the seam allowances towards the overlap placket.

19



Slash diagonally the seam allowance 1 mm (1/16") before the overlap placket attaching seam end.

20



Baste the overlap placket short side edge making sure that its edge covers the seam.

21



Stitch a straight seam line 1 mm (1/16") away from the seam. Make sure that the placket is stitched on the wrong side as evenly as on the right side. Press it with an iron. Press the seam allowance to the sleeve right side forming a point, for convenience you can glue it with a glue-stick.



22



Pull the end of the underlap placket to the right side. Baste or glue the sleeve placket top point to secure it, having previously aligned the slit bottom edges.



23



Use a hand-baste stitch to indicate the slit top point. Then draw a stitch line with chalk or a vanishing fabric marker.

24



2-2,6

On the right side, topstitch the placket top along the perimeter. Make sure the slit top point is not caught in the stitching on the wrong side. Press the sleeve opening.

25



2-2,6

Fold the pleats in the direction of the sleeve opening according to the marks, transferred from the pattern. Pin them and then stitch 7 mm (1/4'') in from the edge to secure. Repeat the same steps with the opposite sleeve.

26



Pin the fronts and the back along the shoulder seams with right sides together. Serge the pieces. Press the seam allowances flat towards the fronts.

27



With right sides together, pin the sleeves into the armholes aligning the marks. Serge the sleeves in place. Press the seam allowances towards the front and the back.

28



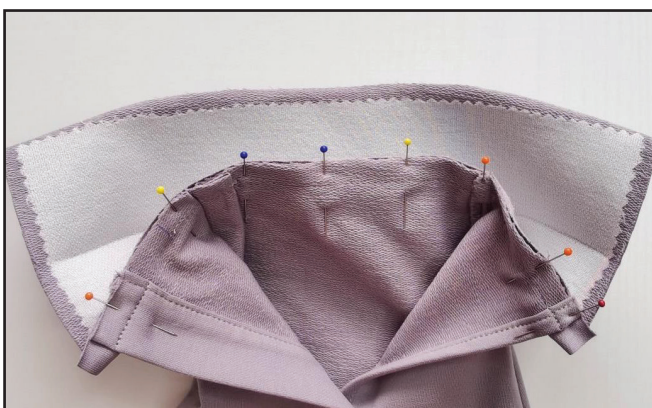
With right sides together, pin the shirt pieces along the side seams aligning the marks. Serge them. Place the sleeve attaching seam allowances in different directions to avoid excess thickening. Press the seam allowances flat towards the fronts.

29



Fold the cuffs in half lengthways, wrong side inside, and press them.

30



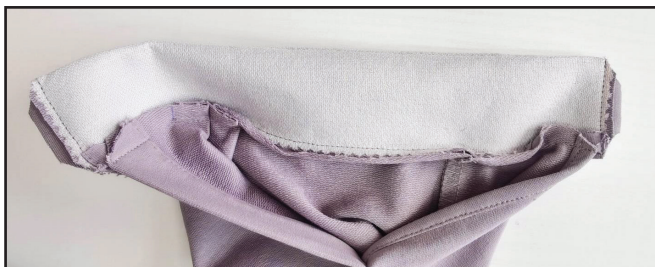
Pin the cuff to the sleeve end with right sides together. Stitch it in place 10 mm (3/8") in from the edge. Press the seam allowances towards the cuff.

31



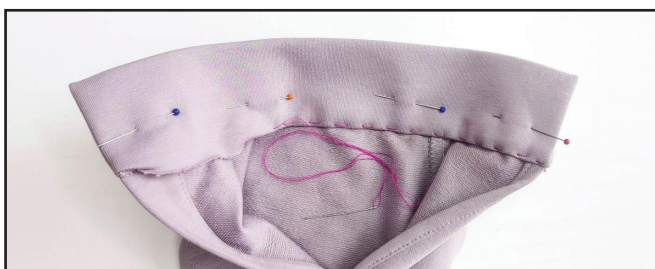
Fold the cuff in half, right sides together. Pin the short side edges, tucking seam allowances inward. Stitch the side edges 10 mm (3/8") in from the edge.

32



Trim the cuff seam allowances on the right side to 3 - 4 mm (1/8"). Trim the seam allowances sharp corner points. Turn the cuff out and press it.

33



Place the folded edge over the seam line. Then hand-baste along the fold line.

34



Topstitch on the sleeve right side, sewing exactly along the seam of attaching the cuff to the sleeve end. Use a unilateral zipper presser foot for it. Another cuff edge should be exactly in the seam. If this step seems difficult, you can sew the edge with a blind hand-stitch. Remove the basting stitches and press the cuff. Repeat the same steps for the other cuff (steps 29 - 34).

Topstitch on the sleeve right side, sewing exactly along the seam of attaching the cuff to the sleeve end. Use a unilateral zipper presser foot for it. Another cuff edge should be exactly in the seam. If this step

35



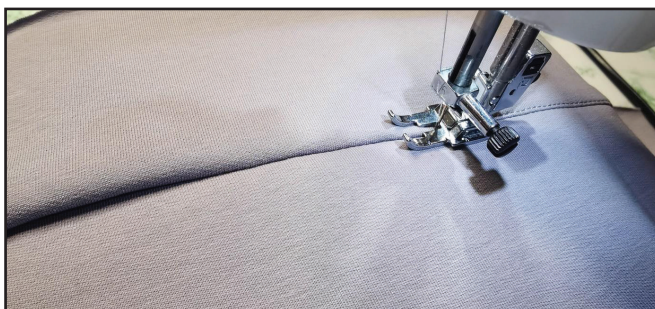
Pin both stand collar pieces along the top edge with right sides together. Stitch the pieces 10 mm (3/8") in from the edge.

36



Trim the upper collar seam allowance to 3 - 4 mm (1/8"). Press the seam allowance towards the under collar.

37



Topstitch the seam allowance on the under collar 1 mm (1/16") away from the seam.

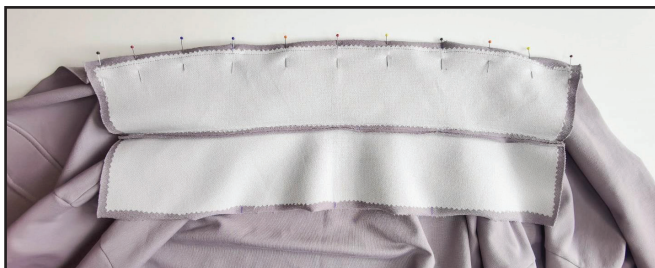
38



Press the stand collar top towards the under collar forming a roll.



39



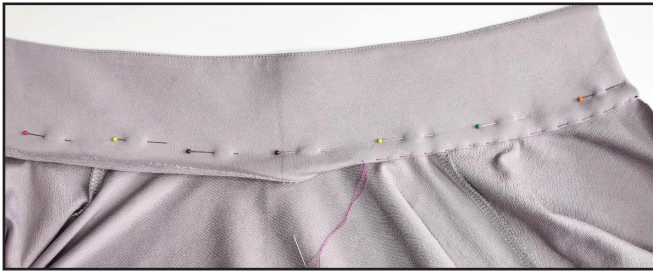
Baste the stand collar to the shirt neckline with right sides together aligning the marks. Stitch the seam 10 mm (3/8") in from the edge.

40



Trim the upper collar seam allowance to 3 - 4 mm (1/8") . Press the seam allowances towards the stand collar.

41



Place the under collar folded edge over the seam line. Then hand-baste along the fold line.

42



Topstitch the under collar edge on the right side sewing exactly along the seam of attaching the upper collar to the neckline. Use a unilateral zipper presser foot for it. Under collar edge should be exactly

in the seam. If this step seems difficult, you can sew the edge with the blind hand-stitch. Remove the basting stitches and press the collar stand.

43



Draw a line along the shirt lower hem 60 mm (2 3/8") in from the edge. Use the line to fold the shirt lower hem 30 mm (1 3/16") up to the wrong side. Pin, baste or glue the folded hem. Give the hem a final pressing.

44



Hem the shirt with a coverstitch machine. Tie the thread tails on the wrong side and hide them into the seam. Press the lower hems.

45



Fold the front placket in half lengthways with right sides together. Pin along the side edges. Stitch the short edges 10 mm (3/8") in from the edge.

46



Trim one of the seam allowances to 3 - 4 mm (1/8"). Trim the sharp corner points.

47



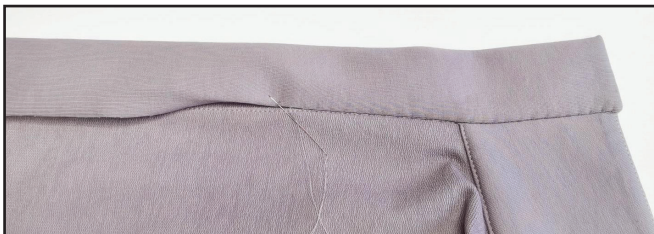
Turn the front placket out and press it.

48



Pin the front placket one side to the center front and the stand collar with right sides together. Coincide the marks carefully, aligning the placket short edges with the shirt lower hem and the upper collar. Stitch the placket in place 10 mm (3/8") in from the edge. Trim the placket seam allowance to 3 - 4 mm (1/8") . Press the seam allowances towards the placket.

49



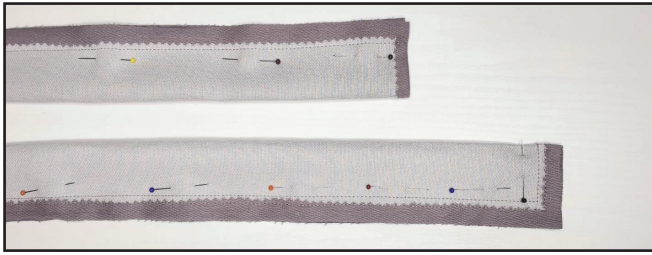
Place the front placket raw edge over the seam line. Fold it inside and hand-baste in place. Press the placket.

50



Topstitch the placket along the perimeter 5 mm (3/16") away from the edge. Press it again. Repeat the same steps with the opposite front placket. (steps 45 - 50).

51



Fold the belt in half lengthways with right sides together. Pin it along the perimeter. Stitch it along the perimeter 15 mm (9/16") in from the edge, leaving one short edge open.

Note: the belt width is designed for a 50 mm (2") wide buckle. If the width of the buckle differs, the width of the belt should be changed to required size.

52



Trim the seam allowances right at the corner points. Be careful not to slash the seam line.

53



Turn the belt out with a pencil. Press it with an iron.

54



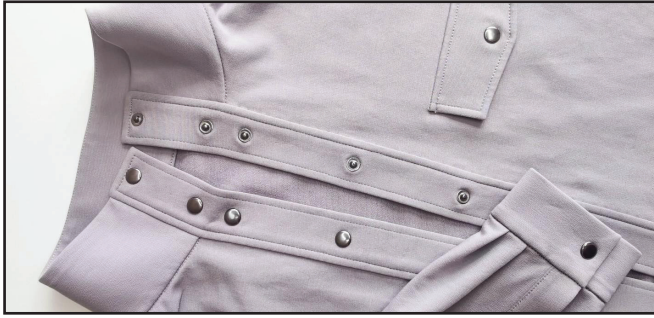
Topstitch the belt along the perimeter 5 mm (3/16") in from the edge, except the open short edge. Press it again.

55



Feed the belt through the buckle. Double tuck the open short edge inside and stitch it 1 mm (1/16") in from the fold.

56



Transfer the marks for the snap buttons from the pattern onto the plackets, cuffs and the pocket flap. Punch 1 - 2 mm (1/16") holes with a Hole Punch or scissors. Attach the snap buttons with a Snap Press, a Snap Setter or a Hammer Tool.

57



Remove the basting stitches, trim and hide the thread tails and press once again. The shirt is ready!

ELINA PATYKOVA

ПРО ШИТЬЕ

**THANK YOU FOR JOINING MY TEAM AND ME!
SHARE YOUR WORKS IN INSTAGRAM AND MY
GROUP IN VKONTAKTE. HOPE YOU WILL STAY
WITH US FOR OUR NEXT PROJECT!**