
TOP «WINGS» FOR GIRLS

SKILL LEVEL



INSTRUCTIONS
FOR SEWING

ELINA PATYKOVA

ПРО ШИТЬЕ



ELINA_PATYKOVA



ELINA-PATYKOVA.RU



VK.COM/ELINA_PATYKOVA



YOU WILL NEED THE FOLLOWING MATERIALS:

- french terry or otton lycra jersey,
- knit fusible interfacing,
- matching threads,
- prong snap buttons 2 pcs.,
- Jersey 70 - 80 or Stretch 70 - 80 needles

A

Check the pattern for amount of fabric to take, according to your size. Note: if the width of the fabric differs from the one specified in the table, the length of the cut is likely to be different. The fabric must be prepared for sewing: washed in warm water, dried and ironed.

B

Let us start the cutting. Print and glue all the paper patterns. When printing, do not forget to check the size of the test square.

C

Put the paper pattern pieces onto the fabric. It is important to check that the grain is straight. Pin the paper pattern pieces to the fabric gently and cut the fabric along the outline. Note: seam allowance is already included. Transfer all the necessary marks from the pattern onto the wrong side of your fabric.

NOW YOU HAVE ALL THE PIECES:

PIECES OF THE TOP:



- ❶ front - cut 2 (french terry)
- ❷ back - cut 1 (french terry)
- ❸ front neck facing - cut 1 (french terry) and cut 1 (fusible interfacing)
- ❹ back neck facing - cut 1 (french terry) and cut 1 (fusible interfacing)
- ❺ sleeve-wing (ruffle) - cut 2 (french terry)

Note: since the pieces are asymmetrical, you should be careful when cutting. To have the fastener on the left shoulder, place the pattern on the wrong side of the fabric, with the inscriptions up. Place the facing patterns onto the knit interfacing non-adhesive side, with the inscriptions up.

NOW WE CAN START SEWING

SYMBOLS:



straight stitch



the stitch length in (mm)



flat lock stitch



zigzag stitch



the stitch width in (mm)



3-Step Zigzag Seam Finishing



unilateral zipper presser foot



universal presser foot



invisible zipper presser foot



pinning

You should lockstitch the seam and trim the thread tails or tie the seam thread tails and hide them into the seam after sewing a serger stitch or cover seaming chain stitch.



3-thread serger stitch



4-thread serger stitch

NOTE:

A

4-thread serger stitch

If you do not have a serger, you can use stretch stitches available on your sewing machine, or at least, a zigzag stitch.

B

3-thread serger stitch

If you do not have a serger, you can replace it with an overedge stitch, or a zigzag stitch.

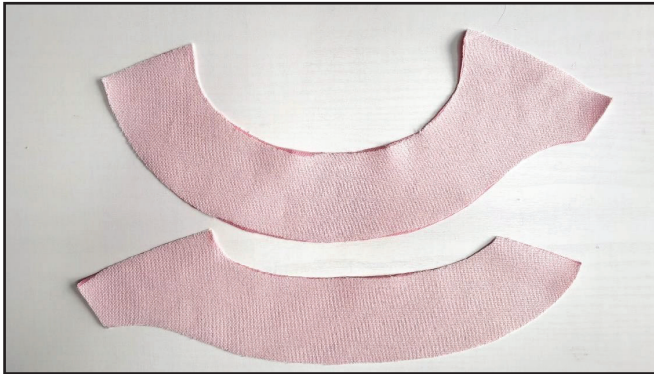
C

flat lock stitch

If you do not have a coverstitch machine, the flat seam can be performed with a) a twin needle on a sewing machine, b) decorative stretch seam on a sewing machine, c) finish the seams with serger and stitch them with a straight stitch.

SEWING GUIDE

1



Fuse the interfacing to the front and back neck facing pieces.

2



4  2,5-3,5  7

Pin the front neck facing and the back neck facing pieces along the shorter shoulder seam line right sides together. Serge the shoulder edges. Press the seam allowances flat towards the back.

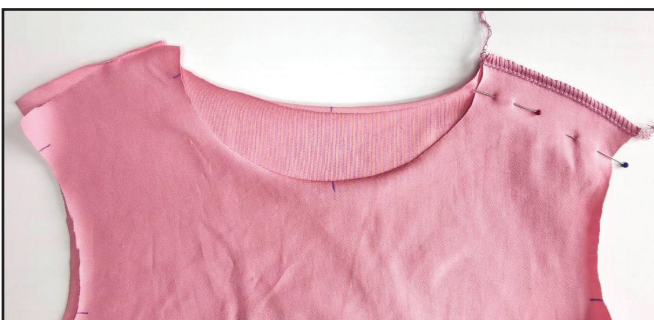
3



4  2,5-3,5  7

Finish the facing along the outer curved edge with a serger. Press it.

4



4  2,5-3,5  7

Pin the front and the back along the right shoulder edge with right sides together. Serge the pieces. Press the seam allowances flat towards the front.

5

5



With right sides together, place the facing along the garment neckline and the left shoulder edges coinciding the right shoulder seams and marks. Stitch the facing 7 mm (1/4") from the edge.

6



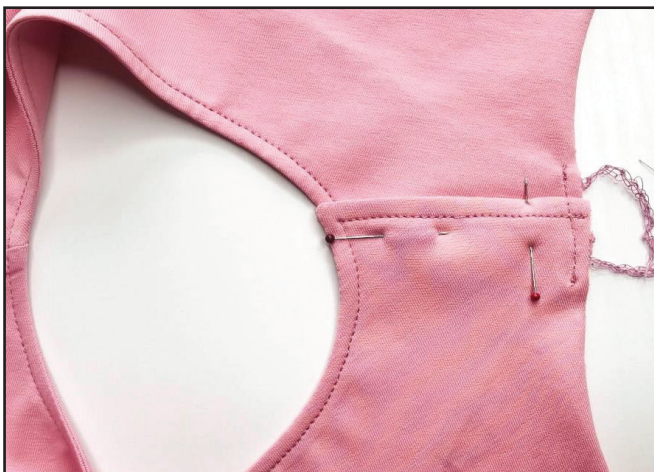
Trim the facing seam allowances to 3 - 4 mm (1/8") and clip the corner points. Turn the facing out and press it forming a roll.

7



Topstitch the left shoulder seams and the neckline 5 mm in from the edge. Press it.

8



Pin the front shoulder edge to the back shoulder edge aligning the marks. Secure them stitching the seam along the armhole 7 mm (1/4") in from the edge.

9



Hand-baste the edge to the right shoulder seam to secure it.

10



4 2,5-3,5 7

Place the front and the back right sides together and pin them along the side seams. Serge the side edges. Press the seam allowances flat towards the front.

11



4 2,5-3,5 7

Fold the ruffle in half right side inside and pin it. Serge the ruffle short edges.

12



Press the seam allowances into different directions to avoid excess thickening when stitching the neckband to the garment.

13



Fold the ruffle in half lengthways, wrong side inside and press it.

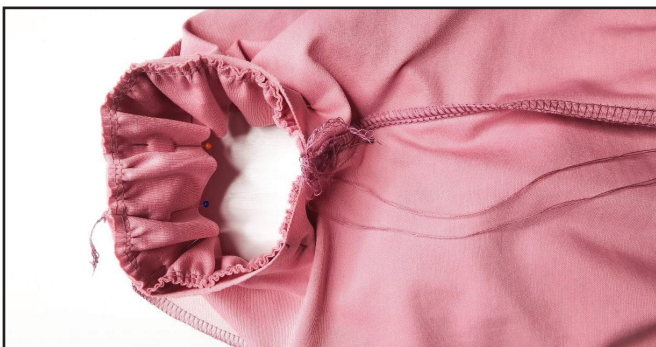
14



Sew two parallel seams 5 mm (3/16") and 3 mm (1/8") in from the edge. Set the maximum stitch length at 4 - 5 mm (3/16"), don't backstitch and leave the thread tails at least 3

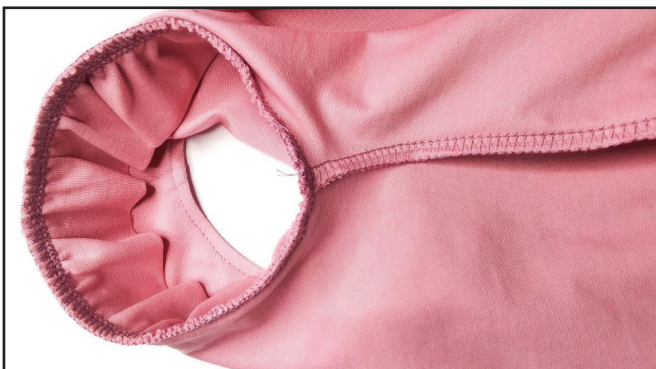
cm (1 3/16") long at both sides of the seams. Gently pull the needle threads to gather the ruffle to the length specified in the pattern. Tie off the thread tails at the ends of the seams.

15



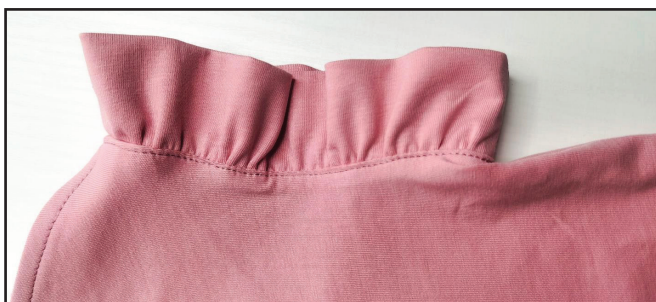
Pin the ruffle to the garment armhole right side, aligning the ruffle seam with the side seam, and the halfway mark with the shoulder seam. Readjust the gathers to make them evenly spaced.

16



Serge the ruffle to the garment. Press the seam allowances flat towards the garment.

17



Topstitch along the armhole 1 mm (1/16") in from the seam. Press the seam again. Repeat the same steps with the opposite ruffle (steps 11 - 17).

18



Fold the garment lower hem by 20 mm (13/16"). Pin, hand-baste or glue it. Give the hem a final pressing.

19



Coverstitch the garment lower hem. Tie the thread tails on the wrong side and hide them into the seam. Press the lower hem.

20



Transfer the snap button placement marks from the pattern onto the garment. Attach the prong snap buttons with a Snap Press.

21



Remove the basting stitches, trim the thread tails, and press once again. The top is ready!

ELINA PATYKOVA

ПРО ШИТЬЕ

**THANK YOU FOR JOINING MY TEAM AND ME!
SHARE YOUR WORKS IN INSTAGRAM AND MY
GROUP IN VKONTAKTE. HOPE YOU WILL STAY
WITH US FOR OUR NEXT PROJECT!**