

# DRESS CLASSIC FOR WOMEN

SKILL LEVEL



## INSTRUCTIONS FOR SEWING

ELINA PATYKOVA

ПРО ШИТЬЕ



ELINA\_PATYKOVA



ELINA-PATYKOVA.RU



VK.COM/ELINA\_PATYKOVA



## FOR TAILORING YOU WILL NEED:

- french terry,
- invisible zipper 2 pcs. (secrets for breastfeeding),
- fusible interfacing,
- matching threads,
- Jersey 70 - 75 or Stretch 70 - 75 needles

A

Check the pattern for amount of fabric to take according to your size. Note: if the width of the fabric differs from the one specified in the table, the length of the cut is likely to be different. Before beginning your sewing project, wash the fabric in warm water, dry and iron it.

Б

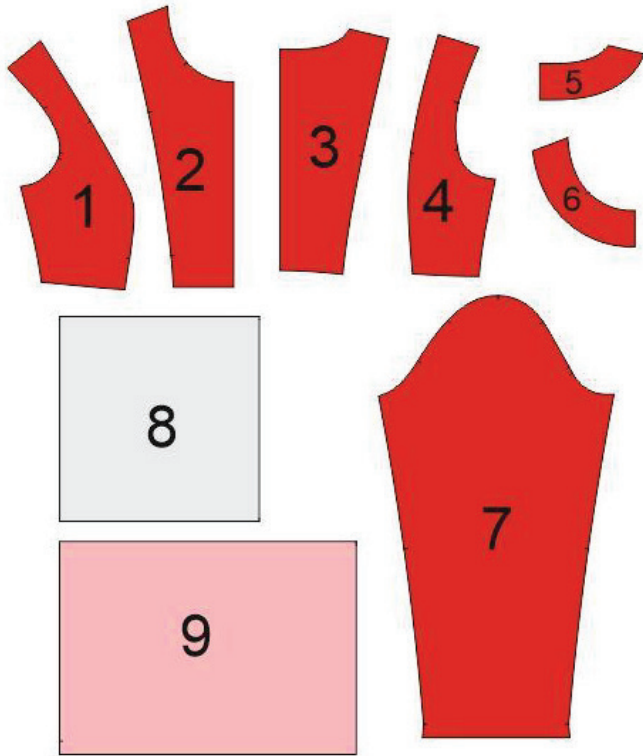
Let's start the cutting. Print and glue the paper patterns. When printing, do not forget to check the size of the test square.

В

Lay the paper pattern pieces onto the fabric. It's important to check that the grain is straight. Pin the paper pattern pieces to the fabric gently and cut the fabric along the outline. Note: seam allowance is already included. Transfer all the marks from the pattern onto the wrong side of your fabric.

## NOW YOU HAVE ALL THE PIECES:

### DRESS PIECES:



- ① Side front - cut 2 (color 1)
- ② Center front - cut 1 on the fold (color 1)
- ③ Center back- cut 1 on the fold (color 1)
- ④ Side back - cut 2 (color 1)
- ⑤ Back neck facing- cut 1 on the fold (color 1)
- ⑥ Front neck facing - cut 1 on the fold (color 1)
- ⑦ Sleeve - cut 2 (color 1)
- ⑧ Skirt top tier - cut 2 on the fold (color 2)
- ⑨ Skirt bottom tier - cut 2 on the fold (color 3)

NOW WE CAN START SEWING

## SYMBOLS:



straight stitch



the stitch length in (mm)



flat lock stitch



zigzag stitch



the stitch width in (mm)



3-Step Zigzag Seam Finishing



unilateral zipper foot



universal presser foot



invisible presser foot



**pinning**

You should lockstitch the seam and trim the thread tails or tie the seam thread tails and hide them into the seam after sewing a serger stitch or cover seaming chain stitch.



3-thread serger stitch



4-thread serger stitch

## NOTE:

**A**

### 4-thread serger stitch

If you do not have a serger, you can use stretch stitches available on your sewing machine, or at least, a zigzag stitch.

**B**

### 3-thread serger stitch

If you do not have a serger, you can replace it with an overedge stitch, or a zigzag stitch.

**C**

### flat lock stitch

If you do not have a coverstitch machine, the flat seam can be performed with a) a twin needle on a sewing machine, b) decorative stretch seam on a sewing machine, c) finish the seams with serger and stitch them with a straight stitch.

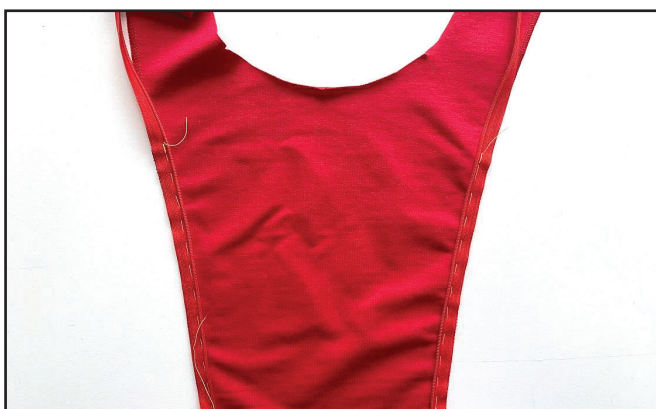
# SEWING GUIDE

1



If you are sewing a dress without secret zippers for breastfeeding, skip this and the following steps and go straight to step 13. Fuse the interfacing strips 1 cm (3/8") wide to the front outer pieces: the center and side front princess lines. The strip length is equal to the distance between the marks + 1 cm (3/8") on each side. Finish the front princess lines with a serger.

2



Open the zipper. Place one zipper tape to the center front with right sides together, so that the slider stayed at the bottom. Pin them aligning the zipper top stop with the lower notch on the center front. Baste them.

3



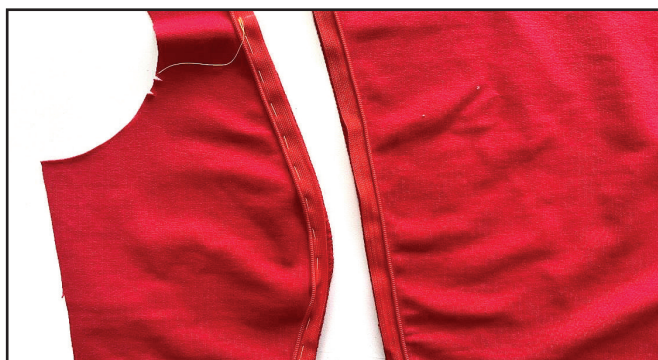
Stitch the seam with an invisible zipper presser foot. Try to stitch between the top and lower marks on the front piece, as close to the zipper teeth as possible.

4



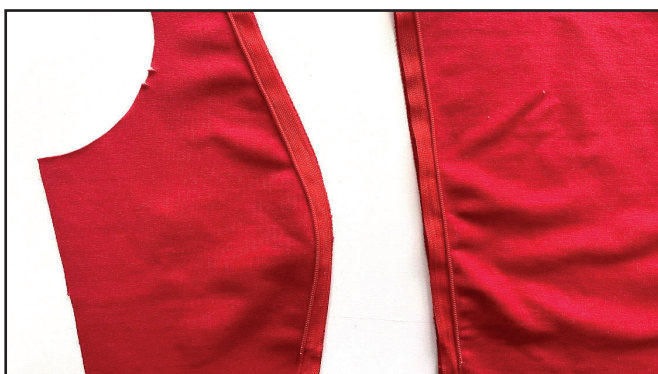
Close the zipper and transfer the zipper beginning and end marks from center front to the other zipper tape.

5

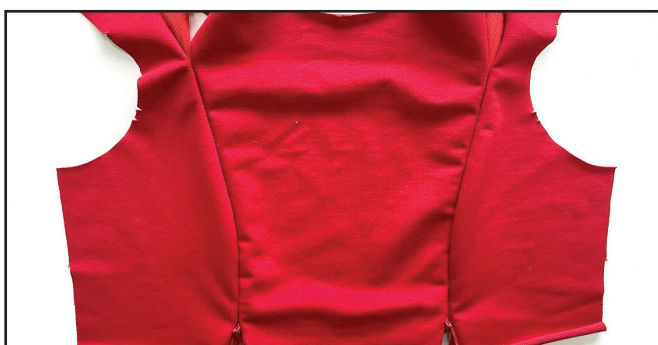


Open the zipper and pin the other zipper tape to the side front with right sides together. Baste them. Close the zipper and check it to sit flat.

6



Stitch the seam with an invisible zipper presser foot. Stitch between the top and the bottom marks on the side front piece, as close to the zipper teeth as possible.



7



2,5-3

Pin and baste the princess seam between the armhole line and the top zipper mark and between the front lower edge and the bottom zipper mark 1 cm (3/8") in from the edge. These seam ends should exactly coincide with the zipper attaching seam ends.

8



Press the seam allowances open. Carefully press the zipper on the right side.

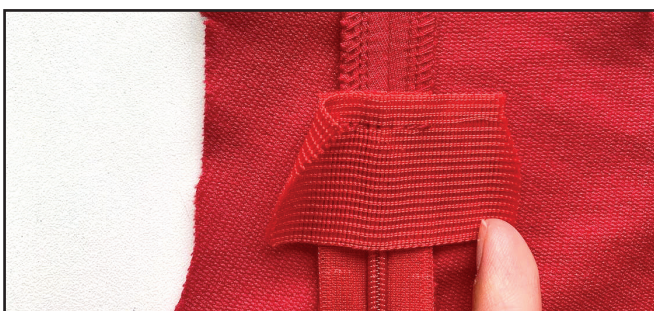


9



If your zipper is much longer than you need, cut it off, leaving a 2-3 cm (13/16") «tail».

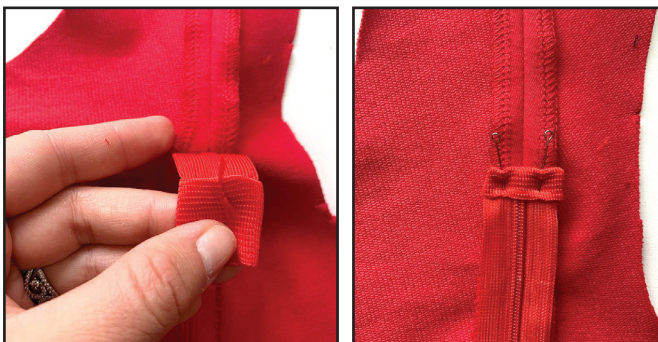
10



2,5-3

You can cover the zipper bottom with twilled ribbon, corded silk ribbon or fabric binding tape. To do it, pin a small piece of ribbon to the zipper bottom. Stitch them 7 mm (1/4") in from the edge.

11



Tuck the zipper with the ribbon short edges. Fold the other long side onto the zipper and pin it.

12



Stitch as close to the ribbon edge as possible.

13



If your dress is without secret zippers for breastfeeding, place the center front pieces and the side front pieces with right sides together and serge the princess lines aligning the marks. Press the seam allowances towards the center front piece.

14



Place the center back pieces and the side back pieces with right sides together and serge the princess lines aligning the marks. Press the seam allowances towards the side back pieces.

15

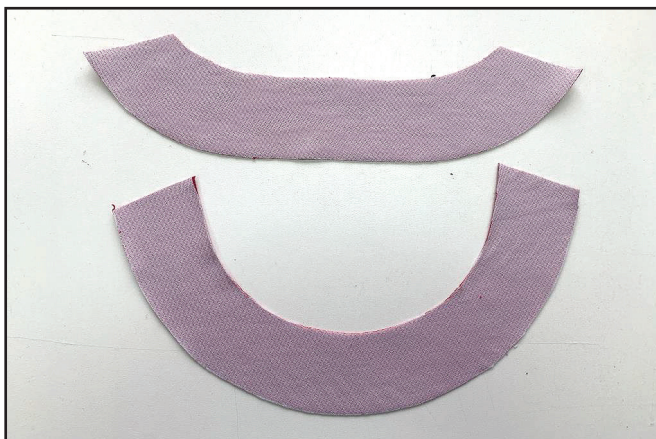


4 2,5-3 7

Place the front and back with right sides together and serge the shoulder seams and the side seams. Press the seam allowances towards the back.

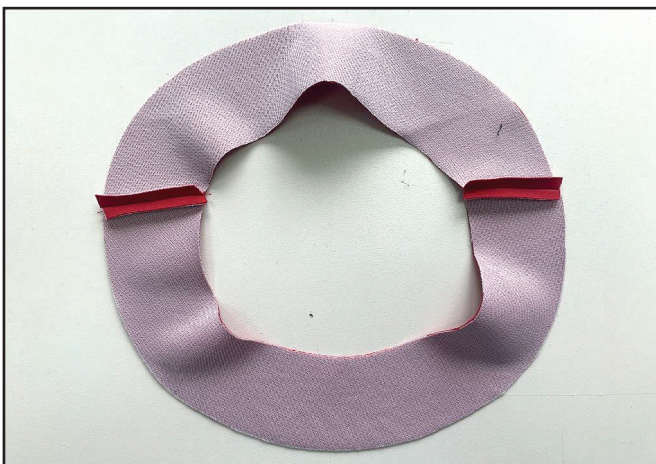


16



Fuse interfacing on the back neckline facing and the front neckline facing.

17



2,5-3

Place the facing pieces with right sides together and stitch the shoulder seams 7 mm (1/4") in from the edge. Press the seam allowances open.

18



Finish the piece outer edge with a serger.

19



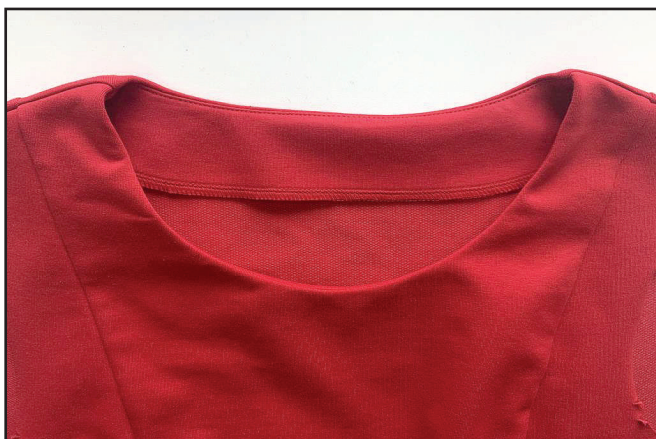
Place the facing and the dress lining with right sides together and stitch them along the neckline 7 mm away from the edge.

20



Topstitch the seam allowances towards the facing.

21



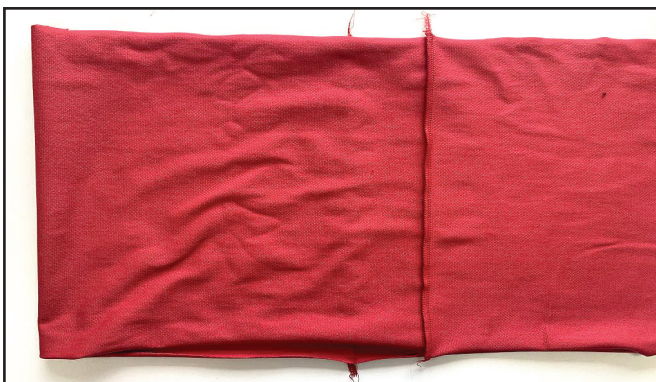
Fold the facing to the bodice wrong side and press the neckline forming a roll 1 mm (1/16") towards the facing.

22



To avoid turning the facing out, hand-stitch it to the bodice shoulder seams.

23



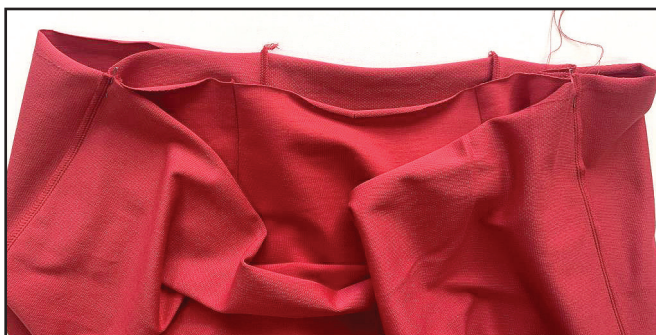
Place the skirt top tiers right sides together and serge the side seams. Press the seam allowances towards any piece.

24

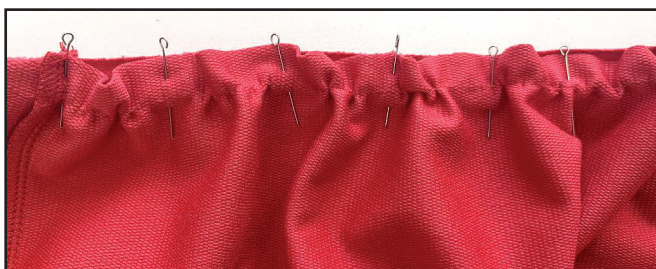


Stitch along the top tier upper edge 8 - 10 mm (5/16 - 3/8") in from the edge. Set the maximum stitch length and the minimum needle thread tension. Do not backstitch at the seam ends. Note: leave the thread tails 10 cm (4") long.

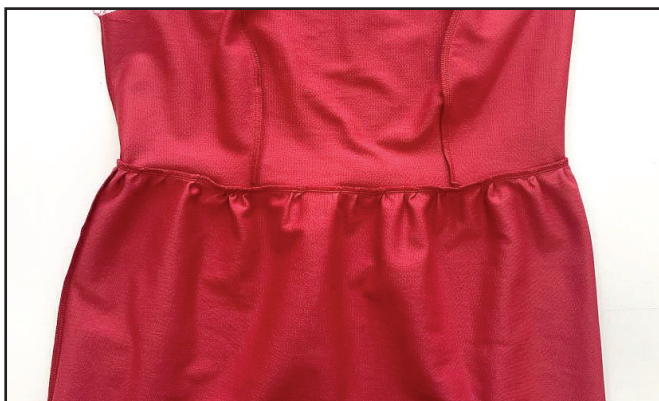
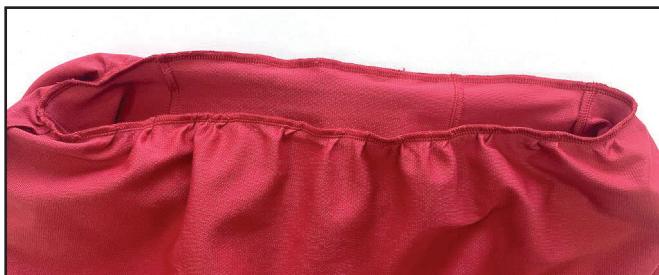
25



Place the skirt and the bodice with right sides together and first pin only the side seams. Gather the skirt top tier to fit the bodice lower hem by pulling the lower (bobbin) thread, evenly readjust the gathers and pin them along the edge.



26



Serge them. Press the seam allowances towards the bodice.

27



Repeat the process for the skirt lower tier and serge it to the upper tier. Place the side seam allowances into different directions.

28



Press the seam allowances towards the wrong side 2 cm or (13/16") along the skirt lower tier hem.

29



Coverstitch the dress lower hem.

30



4 2,5-3 7

Place each sleeve in half with right sides together and serge the sleeve side seams. Press the seam allowances towards the sleeve front side.

31

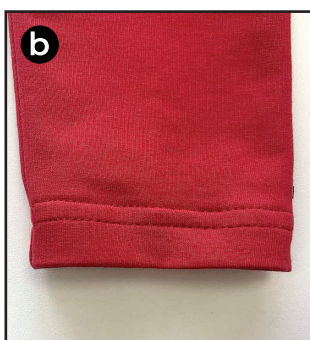
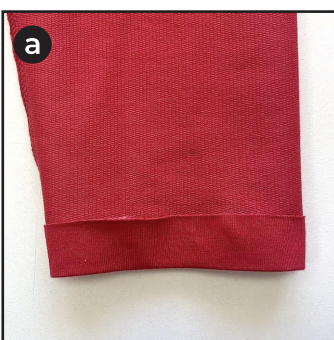


4 2,5-3 7

Turn the sleeve to the right side and pin it to the bodice with right sides, aligning the marks. Serge them around the armhole. Tie the thread tails and hide them into the seam.



32



3-3,5

a) Press the sleeve lower seam allowance towards the wrong side 2 cm or (13/16") along the skirt lower tier hem.

b) Coverstitch the sleeve lower hems with a flat lock stitch.

33



Remove the basting stitches and press the garment. The dress is ready!

ELINA PATYKOVA

ПРО ШИТЬЕ

**THANK YOU FOR JOINING MY TEAM AND ME!  
SHARE YOUR WORKS IN INSTAGRAM AND MY  
GROUP IN VKONTAKTE. HOPE YOU WILL STAY  
WITH US FOR OUR NEXT PROJECT!**