

THREE-PIECE SUIT FOR GIRLS

SKILL LEVEL



INSTRUCTIONS FOR SEWING

ELINA PATYKOVA

ПРО ШИТЬЕ



ELINA_PATYKOVA



ELINA-PATYKOVA.RU



VK.COM/ELINA_PATYKOVA



FOR TAILORING YOU WILL NEED:

- french terry,
- thread, matching the main fabric,
- needles for knit fabric (Super Stretch 75),
- elastic band 3 cm (1 3/16") wide,
- fusible interfacing

A

Check the pattern for amount of fabric to take according to your size. Note: if the width of the fabric differs from the one specified in the table, the length of the cut is likely to be different. Before beginning your sewing project, wash the fabric in warm water, dry and iron it.

B

Let us start the cutting. Print and glue all the paper patterns. When printing, do not forget to check the size of the test square.

C

Put the paper pattern pieces onto the fabric. It's important to check that the grain is straight. Pin the paper pattern pieces to the fabric gently and cut the fabric along the outline. Note: seam allowance is already included. Transfer all the marks from the pattern onto the fabric pieces.

NOW YOU HAVE ALL THE PIECES:

JACKET PIECES:



- ① Sleeve – cut 2
- ② Back - cut 1 on the fold
- ③ Side front - cut 2
- ④ Center front - cut 4
- ⑤ Pocket - cut 2
- ⑥ Collar - cut 2

PANTS PIECES:



- ① Pant front - cut 2
- ② Pant back - cut 2
- ③ Pocket lining - cut 2
- ④ Pocket underlay – cut 2
- ⑤ Waistband

SKIRT PIECES:



- ① Skirt front panel - cut 1 on the fold
- ② Skirt back panel - cut 1 on the fold
- ③ Pocket lining - cut 2
- ④ Pocket underlay - cut 2
- ⑤ Waistband - cut 1

NOW WE CAN START TAILORING

SYMBOLS:



straight stitch



the stitch length in (mm)



flat lock stitch



zigzag stitch



the stitch width in (mm)



3-Step Zigzag Seam Finishing



unilateral zipper foot



universal presser foot



invisible presser foot



pinning

You should lockstitch the seam and trim the thread tails or tie the seam thread tails and hide them into the seam after sewing a serger stitch or cover seaming chain stitch.



3-thread serger stitch



4-thread serger stitch

NOTE:

A

4-thread serger stitch

If you do not have a serger, you can use stretch stitches available on your sewing machine, or at least, a zigzag stitch.

B

3-thread serger stitch

If you do not have a serger, you can replace it with an overedge stitch, or a zigzag stitch.

C

flat lock stitch

If you do not have a coverstitch machine, the flat seam can be performed with a) a twin needle on a sewing machine, b) decorative stretch seam on a sewing machine, c) finish the seams with serger and stitch them with a straight stitch.

JACKET SEWING GUIDE

1

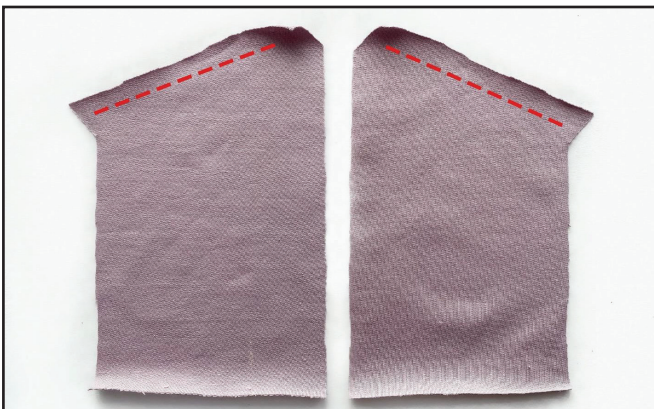


Fuse interfacing to one collar piece, and to two of the four center front pieces - front facing.

2



Finish the pocket top edge and the front facing long edge with a serger.



5

3



Fold the finished pocket edge 20 mm (13/16") to the wrong side and pin it.

4



Stitch it exactly atop the serger right needle seam.

5



Press and pin the pockets to the side fronts aligning the marks.

6



Stitch them 3 - 5 mm (1/8 - 3/16") in from the edge.

7



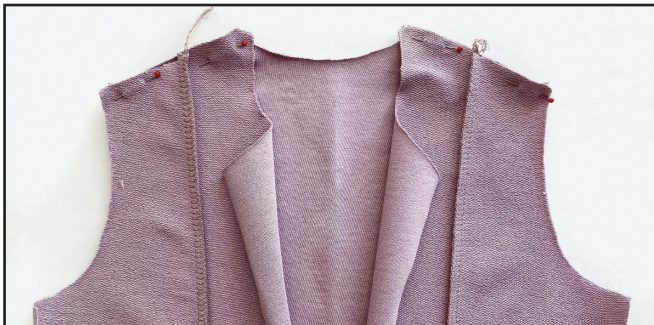
Press and place the center and side fronts with right sides together. Pin them.

8



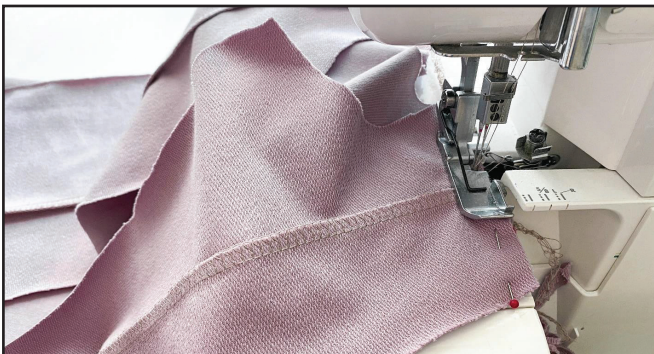
Serge them.

9



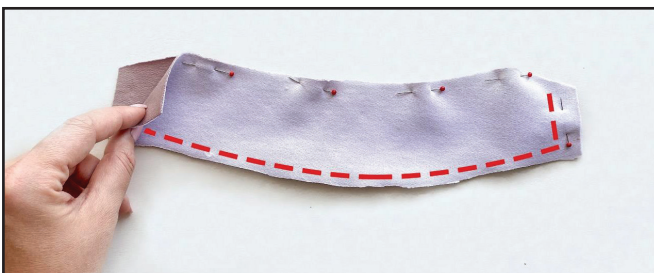
Press the seam allowances towards the center. Place the back and front pieces with right sides together, pin shoulder edges.

10



Serge them.

11



Join and pin the collar pieces right sides together.

12



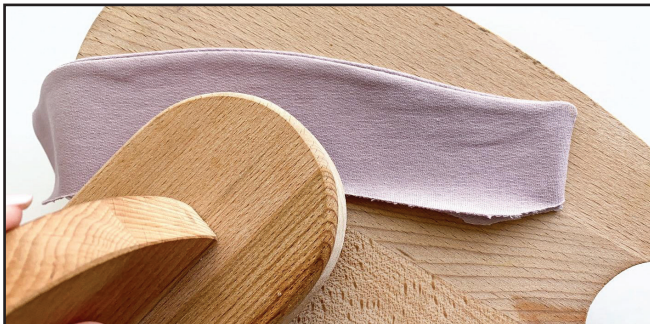
Stitch them 7 mm (1/4") in from the edge. It will be more convenient to place the fused piece atop.

13



Trim the seam allowances 3 mm (1/8") away from the seam line and trim the corner points.

14



Turn the collar out, smooth the corners and press the collar.

15



Place the collar and the garment neckline aligning the shoulder seams with the marks on the collar. Place the collar fused piece atop.

16



Pay special attention to the collar curve and the front pieces neckline. You should coincide them gently, aligning the marks and the collar curve, but do not stretch the neckline.

17



With right sides together, place the center fronts and the front facings aligning the marks.

18



The collar is placed between the front facing and the center front. Readjust the front facing edge gently along the collar curve, but do not stretch it.

19



You can serge them together with one seam. Or you can stitch the front edgings first, then stitch neckline and collar edges, and finish stitching opposite front edging. When stitching, follow the collar curves.

20



Press the seams.

21



Turn the garment and the lapels out to the right side. Press them.

22



Place the sleeve and the armhole with right sides together aligning the marks. Pin them.

23



Serge them.

24

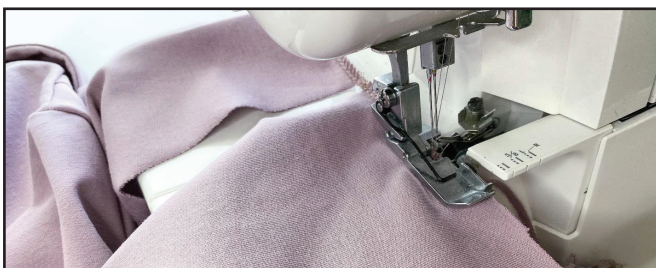


Repeat the process for the opposite sleeve, press the seams.

25



Serge the sleeve lower hems.



26



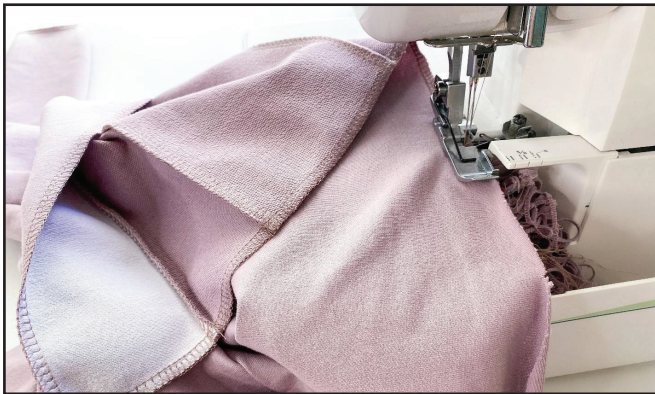
Place the sleeve and the garment side edges with right sides together, pin them.

27



Serge the seams and place the underarm seams in different directions.

28



Unfold the front facings and serge the garment lower hem by one seam.

29



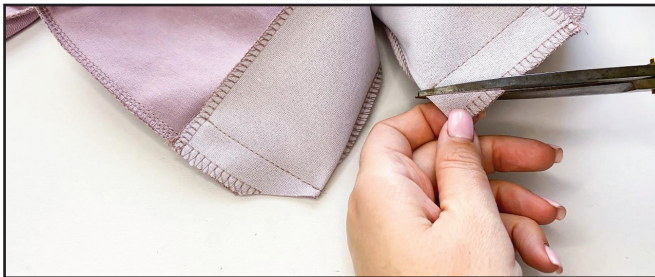
Unfold the front facing to the jacket center front right sides together. Pin them.

30



Stitch them 20 mm (13/16") in from the edge.

31



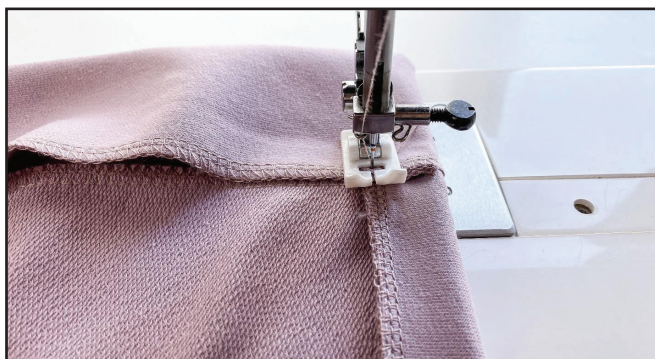
Trim the corners.

32



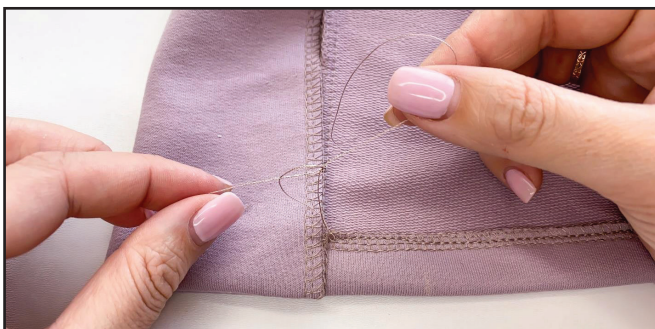
Turn the front facing lower corners out to the right side. Pin the garment lower hem 20 mm (13/16") to the wrong side.

33



Stitch it exactly atop the serger right needle seam. Do not backstitch.

34



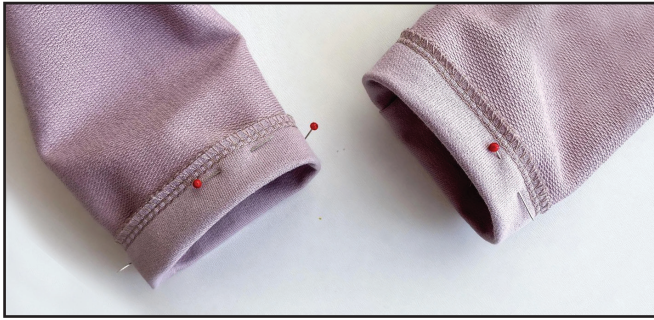
Pull the threads to the wrong side, tie three knots, and hide the thread tails into the serged seam.

35



Due to these actions, the backstitch will be invisible on the right side.

36



Turn the garment to the wrong side and fold the sleeve lower hems 20 mm (13/16") up. Pin them.

37



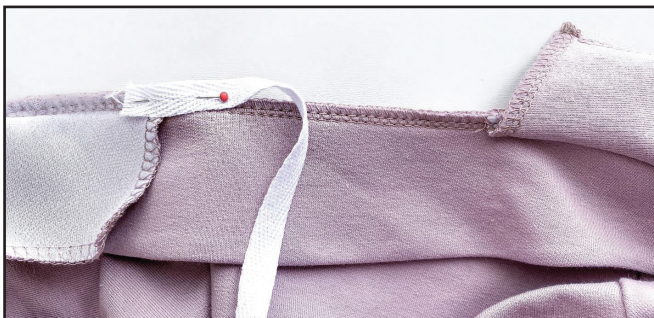
Stitch them atop the serger right needle seam.

38



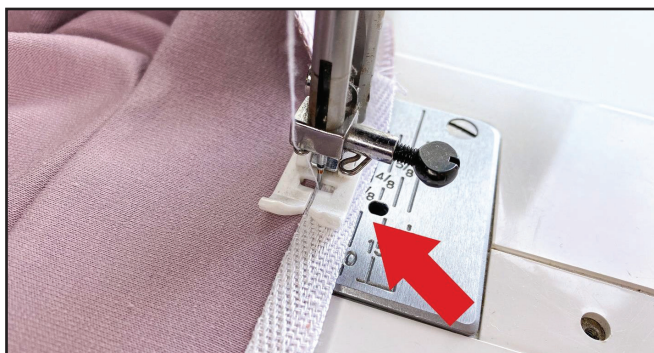
Get these seams pressed and then press the sleeves.

39



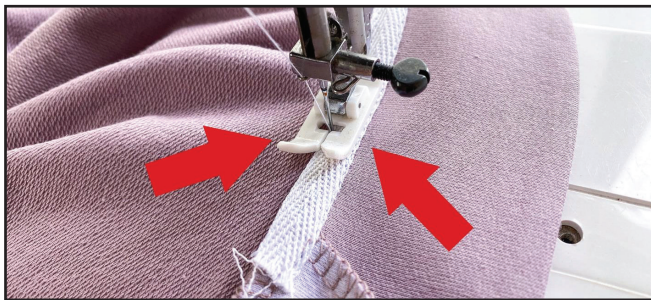
Pin the twilled ribbon to the neckline seam 10 mm (3/8") away from the front facing edge. Twilled ribbon is 10 mm (3/8") wide.

40



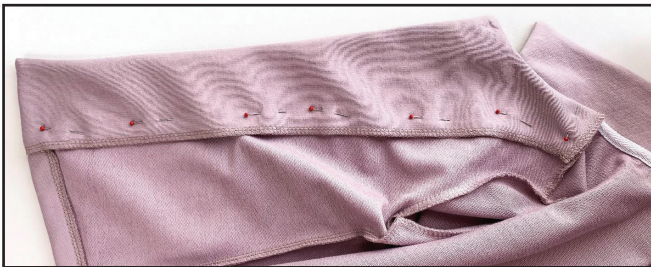
Stitch it. Use the marks on the needle plate of your sewing machine.

41



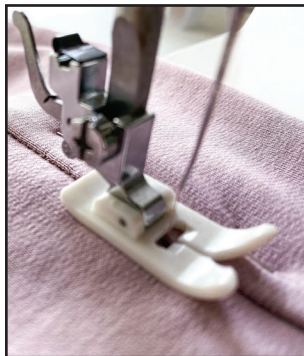
Turn the garment around and stitch the twilled ribbon other side. Follow the interval between the presser foot edge and the twilled ribbon edge. They should be equal.

42



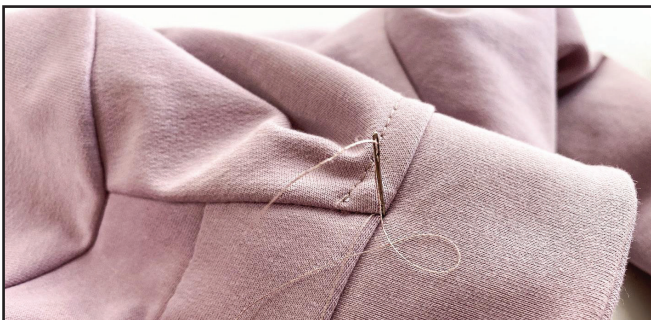
Press the garment and, smoothing the front facing, pin it to the front pieces.

43



Stitch it working on the right side exactly atop the seam, which joins center front and front facing. You should do it slowly and the seam will be invisible. Do not backstitch.

44



Pull the threads to the wrong side and tie three knots. Trim the thread tails.

45



Press, and the jacket is ready.

PANTS SEWING GUIDE

1



Fuse the interfacing strips to the front pocket openings.

2



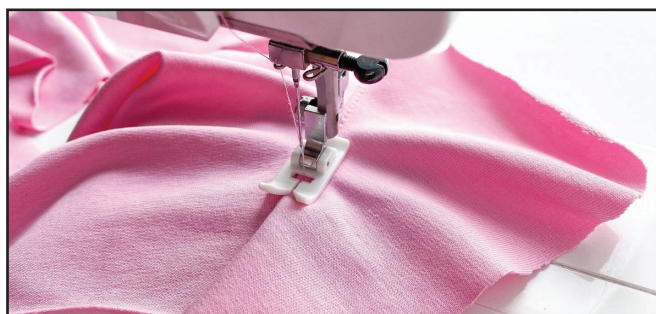
Place the pocket lining to the front pocket opening with right sides together. Pin them.

3



Serge them.

4



Topstitch the seam 2 mm (1/16") in from the edge working on the pocket lining.

5



Press. Place the pocket underlays on to the pocket linings. Pin them.

6



Serge the pocket lining and the pocket underlay edges.

7



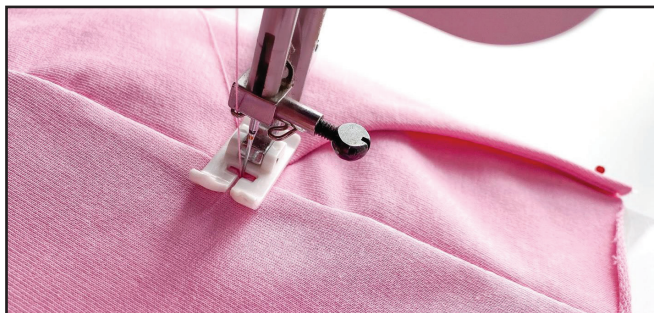
Press the pockets. Place the pant front and back with right sides together. Pin the side edges.

8



Serge them. Sewing together more than two fabric layers, adjust the serger differential feed at higher level.

9



Backstitch the pocket with a 10 mm (3/8") seam using your regular sewing machine.

10



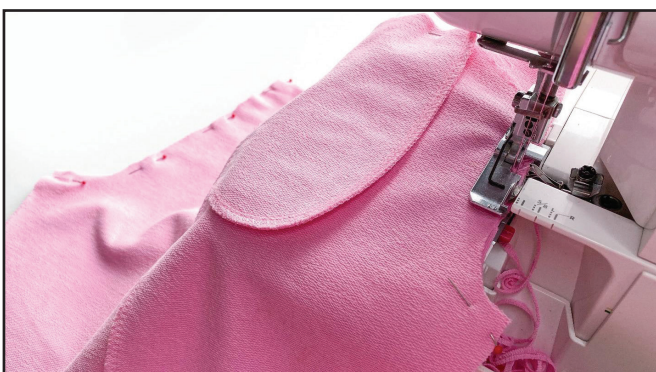
Press. Pin the pocket lining upper edges, the pocket underlay and the pant fronts.

11



Place the pant front and back with right sides together. Pin them along the crotch seam.

12



Serge them.

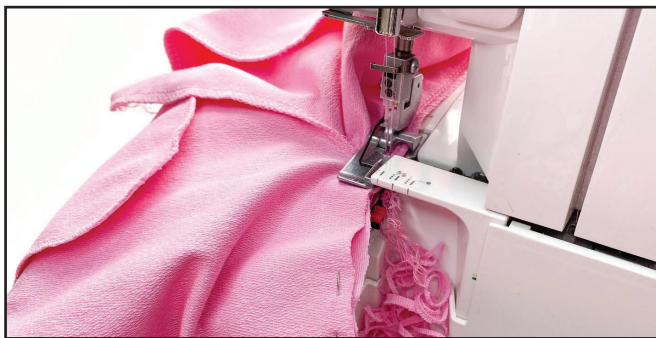


13



Place the pant front and back along the inseams, right sides together. Pin them.

14



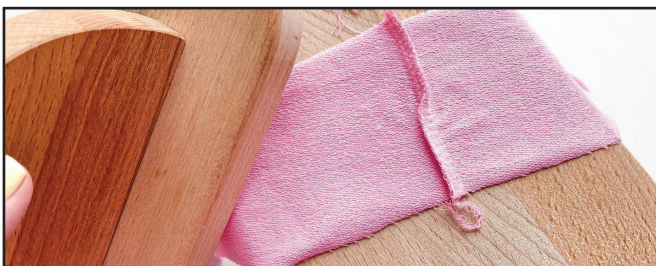
Serge them. Place the crotch seams in different directions.

15



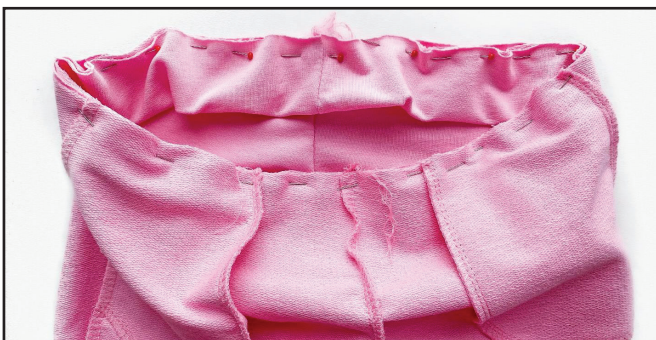
Fold the waistband in half lengthways with right sides together. Pin the short edges. Serge them.

16



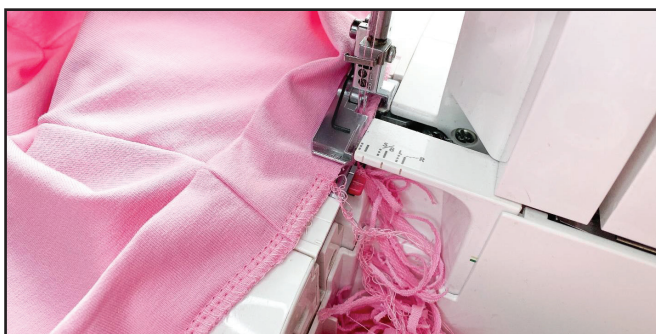
Get the seam pressed and press in different directions at the fold.

17



Fold the waistband in half lengthways with wrong sides together, divide it in quarters, and pin mark. Insert the waistband into the pants, right sides together. Match the marks on the waistband with pants crotch and side seams. Pin them readjusting the waistband evenly.

18



Serge them, leaving an opening 30 mm (1 3/16").

19



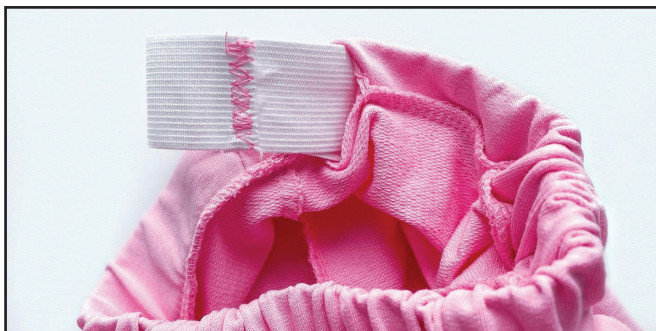
Cut the elastic band 30 mm (1 3/16") wide and length, indicated on the paper pattern.

20



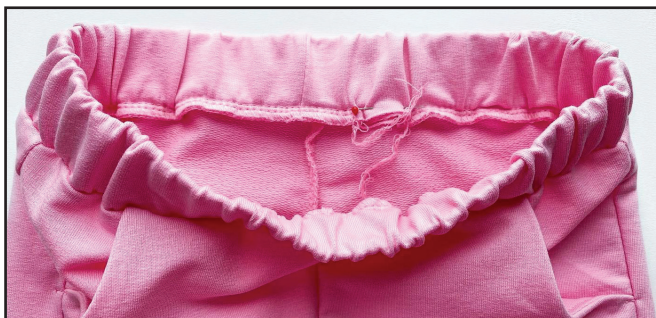
Insert the elastic band into the opening, pull it through the whole waistband leaving open edges outside.

21



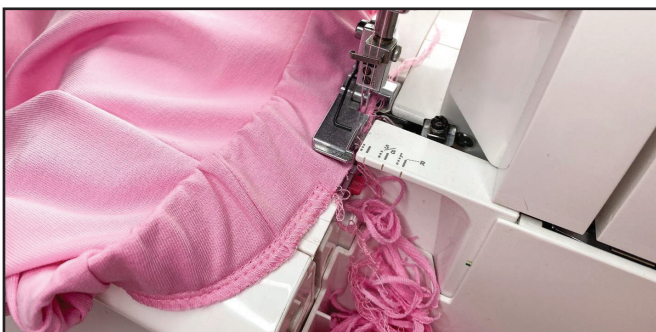
Stitch the elastic band short edges using a regular sewing machine.

22



Readjust the elastic band through the waistband evenly. Pin the opening.

23



Serge the opening.

24



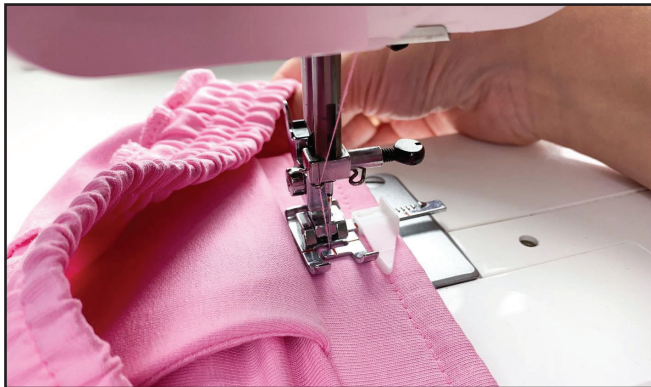
Hide the thread tails into the serged seam. Press the seam.

25



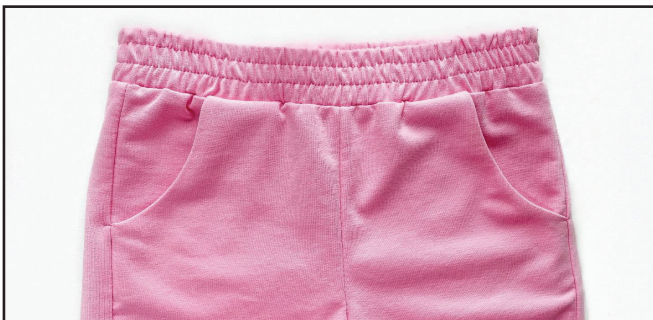
Stretching only the elastic band, stitch the first seam on the waistband 10 mm (3/8") away from the fold. Use the marks on the needle plate of your sewing machine.

26



Stitch the second seam 10 mm (3/8") away from the previous seam. You can use an Adjustable Guide Presser Foot for ease.

27



Press.

28



Fold the pant leg bottom openings towards the wrong side 15 mm or (9/16"). Pin them. Place the seams in different directions.

29



Hem the pant legs with a coverstitch machine. The folded pant leg lower edge should get between the coverstitch machine needles.

30



How to finish the coverstitch machine seam:

1. Raise the needles;
2. Raise the presser foot;
3. Pull the needles threads;
4. Pull the garment 5 cm (2") towards the back and then to the left;
5. Trim the needle thread tails;
6. Pull the garment;
7. Trim the looper thread;
8. Tie the thread tails into three knots on the wrong side and hide the tails into the seam, trim the excess threads.

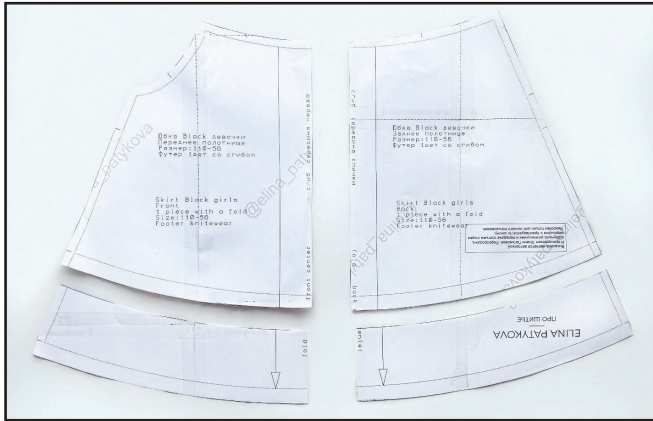
31



Press the garment, and the pants are ready.

SKIRT SEWING GUIDE

1



Use a line on the paper pattern to choose the length of the skirt by cutting along it.

2



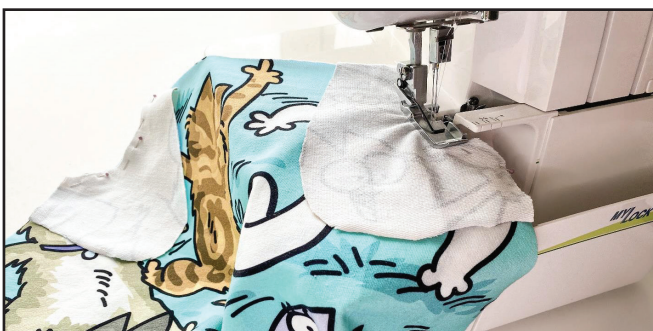
Fuse the kantenband along the pocket opening.

3



Place the pocket lining and the front pocket opening edge with right sides together. Pin them.

4



Serge them.

5



Topstitch the pocket lining 2 mm (1/16") in from the edge.

6



Get it pressed. Place the pocket underlay on the pocket lining aligning the upper and side edges with right sides together. Pin them.

7



Serge the pocket lining and the pocket underlay edges.

8



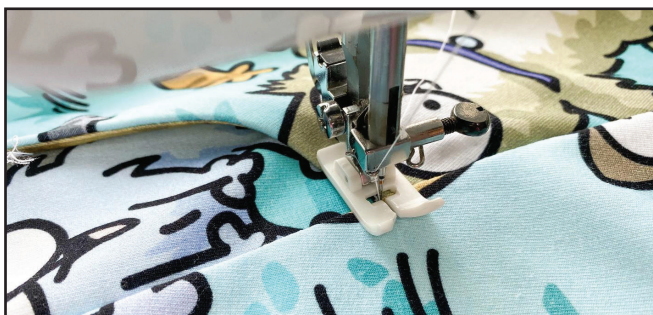
Press them. Place the skirt front and back panels with right sides together. Pin them.

9



Serge them. Serging together more than two layers of fabric, readjust the serger differential feed at higher level.

10



Get the side seams pressed and then press them towards the skirt back panel. Backstitch the pocket with a 10 mm (3/8") seam using your regular sewing machine.



11



Fold the waistband in half, right sides together and pin the short edges.

12



Serge them.

13



Get the seam pressed and press it in different directions at the fold.

14



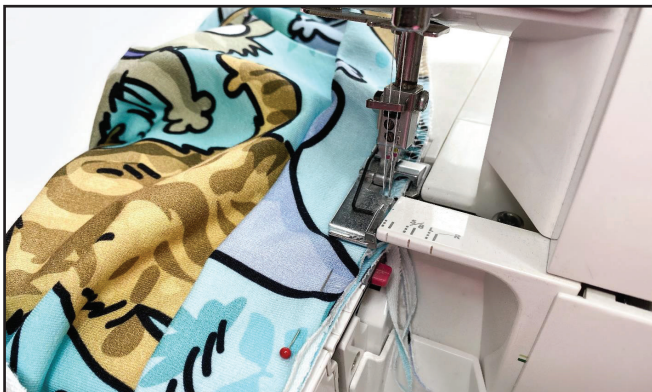
Fold the waistband in half lengthways, wrong sides together, divide it in quarters, and pin mark.

15



Divide the skirt upper edge in quarters and mark them. Align these marks with the marks on the waistband. Pin the skirt center mark to the waistband seam. Evenly readjust the waistband along the skirt upper edge and pin it.

16



Serge it, shaping the waistband and leaving an opening 30 mm (1 3/16").

17



Cut the elastic band 30 mm (1 3/16") wide and length, indicated on the paper pattern.

18



Insert the elastic band into the opening and pull it through the waistband, leaving open edges outside.

19



Stitch the edges.

20



Evenly readjust the elastic band through the waistband. Pin the opening.

21



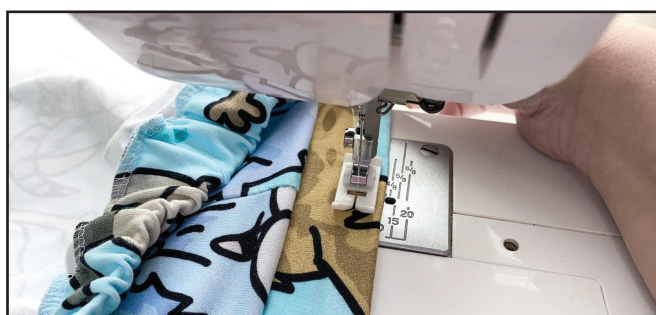
Serge the opening close the seem.

22



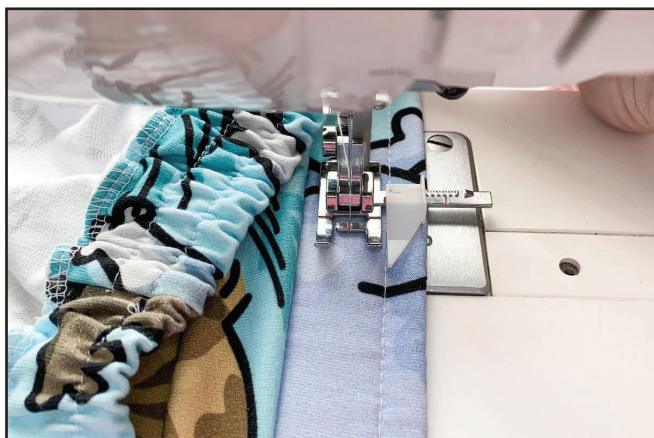
Hide the searged seem thread tails into the seam. Get it pressed.

23



Stretching only the elastic band, stitch 10 mm (3/8") away from the waistband fold. Use the marks on the needle plate of your sewing machine.

24



Stitch the second seam 10 mm (3/8") away from the previous seam. An Adjustable Guide Presser Foot can be used for ease.

25



You can hem the skirt lower edge in two ways. You can coverstitch it, or use your regular sewing machine.

26



Finish the skirt lower edge with a serger.

27



Fold it to the wrong side 15 mm (9/16") away from the edge. Pin it.

28



Stitch it, sewing exactly atop the serger right needle seem.



29



Get the seem pressed and press the garment. The skirt is ready.

ELINA PATYKOVA

ПРО ШИТЬЕ

**THANK YOU FOR JOINING MY TEAM AND ME!
SHARE YOUR WORKS IN INSTAGRAM AND MY
GROUP IN VKONTAKTE. HOPE YOU WILL STAY
WITH US FOR OUR NEXT PROJECT!**