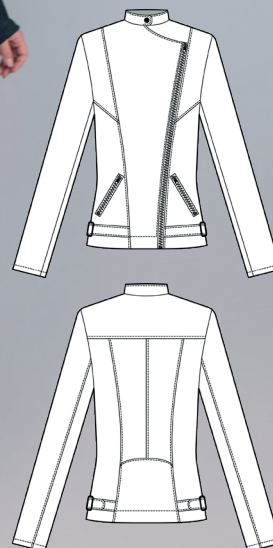


BIKER JACKET FOR WOMEN

SKILL LEVEL



INSTRUCTIONS FOR SEWING

ELINA PATYKOVA

ПРО ШИТЬЕ



ELINA_PATYKOVA



ELINA-PATYKOVA.RU



VK.COM/ELINA_PATYKOVA



FOR TAILORING YOU WILL NEED:

- knit-based suede,
- woven interfacing for stretchy fabric,
- Alfa snap buttons 12,5 mm (1/2") or 15 mm (9/16") - 1 pc.,
- buckle adjuster 40 mm (1 9/16") - 2 pcs.,
- long open-end zipper,
- zipper for pocket 15 cm (9/16") - 2 pcs.,
- matching threads,
- Stretch 90 - 100 needles

A

Check the pattern for amount of fabric to take, according to your size. Note: if the width of the fabric differs from the one specified in the table, the length of the cut is likely to be different. Before beginning your sewing project, wash the fabric in warm water, dry and iron it.

B

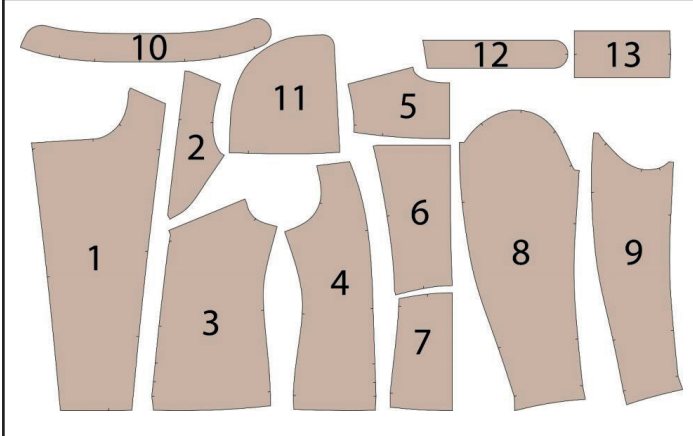
Let's start the cutting. Print and glue all the paper patterns. When printing, do not forget to check the size of the test square.

C

Lay the paper pattern pieces onto the fabric. It's important to check that the grain is straight. When cutting suede, it is important to lay and cut all the pieces with the nap in the same direction. Press them with a weight to the fabric and carefully cut along the outline. Note: seam allowances are already included. Transfer all the marks from the pattern onto the wrong side of your fabric.

NOW YOU HAVE ALL THE PIECES:

JACKET PIECES:



- ❶ front - cut 4 (suede) and cut 2 (fusible interfacing)
- ❷ front yoke - cut 2 (suede)
- ❸ side front - cut 2 (suede)
- ❹ side back - cut 2 (suede)
- ❺ back yoke - cut 1 on the fold (suede)
- ❻ middle back - cut 2 (suede)
- ❼ lower back - cut 1 on the fold (suede)
- ❽ upper sleeve - cut 2 (suede)
- ❾ lower sleeve - cut 2 (suede)
- ❿ stand collar - cut 2 (suede) and cut 1 (fusible interfacing)
- ⓫ pocket lining- cut 4 (suede)
- ⓬ front half belt - cut 4 (suede)
- ⓭ back half belt - cut 2 (suede)

Cut the interfacing pieces with 2 - 3 mm (1/16 - 1/8") seam allowances only, not to make the seams too thick. You can use pinking shears for cutting.

NOW WE CAN START TAILORING

SYMBOLS:



straight stitch



the stitch length in (mm)



flat lock stitch



zigzag stitch



the stitch width in (mm)



3-Step Zigzag Seam Finishing



unilateral zipper presser foot



universal presser foot



invisible zipper presser foot



pinning

You should lockstitch the seam and trim the thread tails or tie the seam thread tails and hide them into the seam after sewing a serger stitch or cover seaming chain stitch.



3-thread serger stitch



4-thread serger stitch

NOTE:

A

4-thread serger stitch

If you do not have a serger, you can use stretch stitches available on your sewing machine, or at least, a zigzag stitch.

B

3-thread serger stitch

If you do not have a serger, you can replace it with an overedge stitch, or a zigzag stitch.

C

flat lock stitch

If you do not have a coverstitch machine, the flat seam can be performed with a) a twin needle on a sewing machine, b) decorative stretch seam on a sewing machine, c) finish the seams with serger and stitch them with a straight stitch.

HOW TO SEW SUEDE AND LEATHER



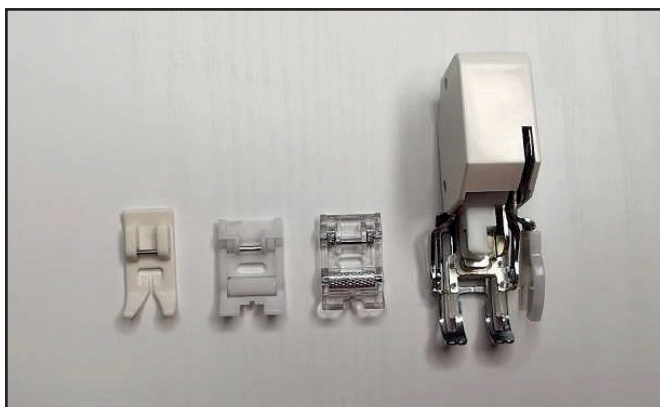
When cutting suede, it is important to lay and cut all the pieces with the nap in the same direction.



This kind of fabric leaves behind puncture marks, so try to prevent ripping. It is also better to avoid basting. Instead of hand-basting you can use special sewing clips, glue stick, special double-sided adhesive tape for leather. If you can not avoid basting, then hand-baste 1-2 mm (1/16") away from the seam line, closer to the edge.

Since we use knit-based suede or eco-leather for this garment, it makes sense to

use Stretch needles. But before you start working on your project, you should test them on a sample. Since fabrics can vary in their characteristics, leather needles are better in some cases.



Suede and eco-leather are easily sewn with standard feet on the wrong side. If you sew on the right side, folds can be formed, the stitches become smaller (since the fabric sticks to the foot and moves unevenly). Special feet can make sewing easier: Teflon foot, roller foot or walking foot. If you do not have these eco-leather presser feet, you can lubricate the universal foot with soft petroleum ointment or baby cream, then remove the excess with a napkin. Try

all the methods on a sample and choose the one you prefer.

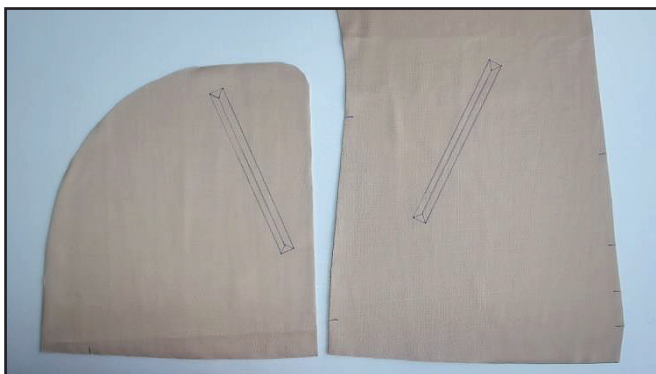
Be sure to select the required temperature, ironing small pieces of the fabrics, since eco-leather can melt under the iron, and glosses can be formed on suede. These fabrics can be most often ironed on the wrong side with the pressing cloth on a low temperature setting without using steam. So, we use a special low-temperature fusible interfacing to reinforce the pieces or refuse to use it at all.

NOW WE CAN START TAILORING

SEWING GUIDE

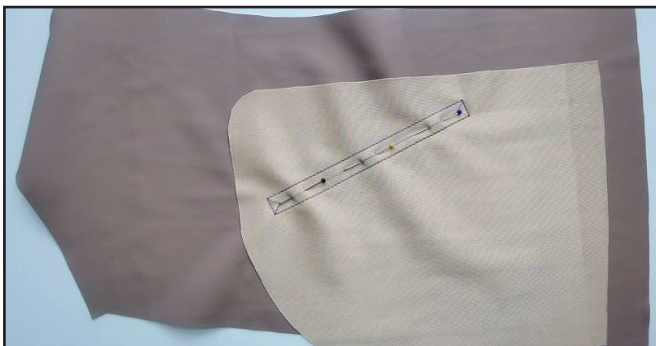
- 1 Fuse two symmetrical front pieces and the stand collar with interfacing. The fused fronts will be front facings and the fused stand collar will be lower stand collar. In this case, the garment is made of eco-leather without using fusible interfacing.

2



Transfer the marking for the pockets from the paper patterns onto the side front piece wrong side and the pocket lining wrong side.

3



Pin the side front and the pocket lining, right sides together, so that the pocket marking match. Pin inside the marking for the pocket. Stitch all the way around the marking.

4



Slash the side front and the pocket lining along the line inside the stitching shape. Slash into the corners right to the stitching lines. Be careful not to slash the seam line!

5



Turn the pocket out to the wrong side. Press it forming a roll. If the pocket is poorly secured, you can glue the pocket lining on the wrong side along the opening with glue stick or leather tape.

6



Place the zipper to the pocket, right side to the wrong side, with slider up and glue it with glue stick so that the zipper would be in the middle of the box. Try to place the zipper evenly, without waving.

7



Topstitch the zipper all way around 1 mm (1/16") from the edge. If the slider prevents you from finishing the seam: place the machine needle in the work, raise the zipper presser foot, move the zipper slider, lower the zipper presser foot and sew on. Working at the bottom of the box, turn the flywheel by hand to avoid the needle breaking on the zipper teeth.

8



Trim the zipper bottom leaving 10 mm (3/8") end.

9



Place the pocket lining other piece to the first one with right sides together. Secure them with sewing clips. Serge them, leaving the lower edge open. Press the seam. Repeat the steps for the opposite pocket (steps 2 - 9).

10



Place the side front and the front yoke with right sides together. Secure the pieces with sewing clips. Stitch them 10 mm (3/8") in from the edge.

11



4 3-4 7

Finish the edges with a serger. Press the seam allowances flat towards the front yoke.

12



2,4-2,8

Topstitch the seam on the yoke 1 mm (1/16") away from the seam. Press the seam. Repeat the same steps for the other side front (steps 10 - 12) and the front yoke.

13



2,4-2,8

Place the side front and the side back with right sides together. Secure the pieces with sewing clips. Stitch them 10 mm (3/8") in from the edge.

14



4 3-4 7

Finish the side edges with a serger. Press the seam allowances flat towards the front.

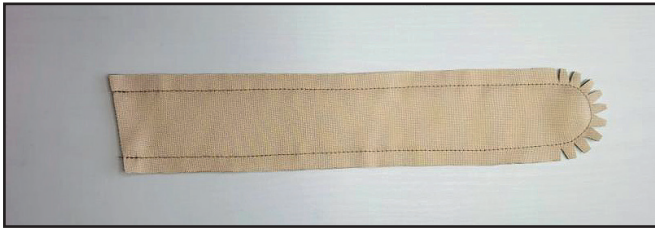
15



2,4-2,8

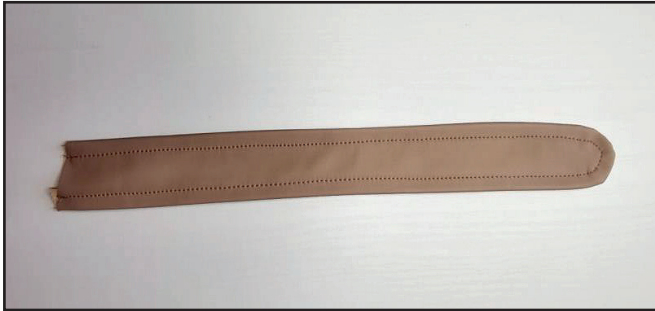
Place two front half belts with right sides together. Stitch them 10 mm (3/8") in from the edge. Leave the short straight edge open.

16



Clip V shapes on the seam allowances along the curved edge leaving 1 mm (1/16") before the seam.

17



Turn the half belt out to the right side and press it. Topstitch it 7 mm (1/4") in from the edge. Press the seams again. Repeat the same steps for the other half belt (steps 15 - 17).

18



Fold the back half belt in half, lengthways, right side inside. Stitch it 10 mm (3/8") in from the edge. Leave the short straight edge open.

19



Trim the corners.

20



Turn the half belt out to the right side and press it. Topstitch along long edges 7 mm (1/4") in from the edge. Press it again.

21



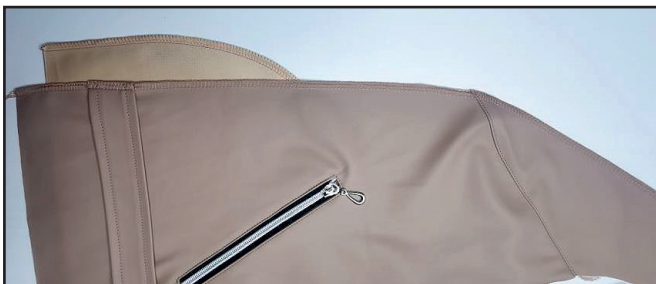
Place the buckle adjuster on the stitched short edge, fold it by 20 mm (13/16") and stitch 1 mm (1/16") away from the edge. Repeat the same steps for the other half belt (steps 18 - 21).

22



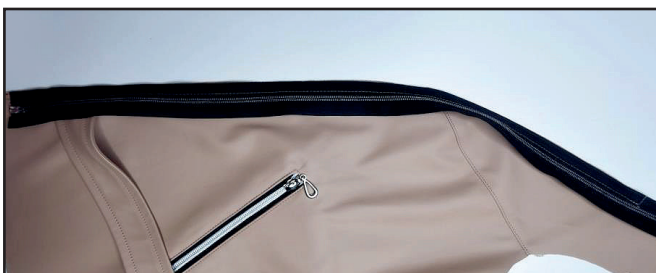
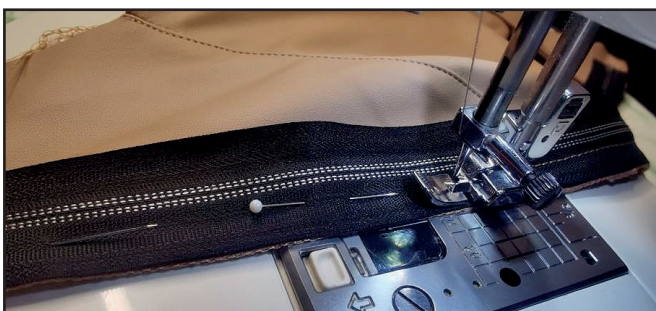
Secure the front and back half belts to the side front and back pieces looking at the marks. Stitch them 7 mm (1/4") in from the edge.

23



Finish the center edge of the left side front with a serger. Press it.

24



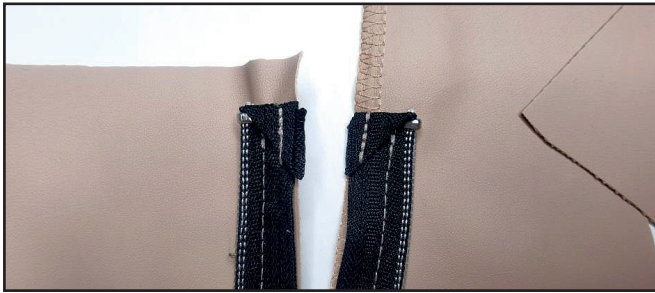
Pin or baste the zipper left tape to the left side front piece, with right sides together. Place the zipper to sit accurately in the seam without waving and pulling the fabric. Align the zipper bottom with the mark, indicated on the pattern. Stitch the zipper in place with unilateral zipper presser foot 10 mm (3/8") in from the edge. Finish the seam exactly at the mark for the zipper end. If the slider prevents you from finishing the seam: place the machine needle in the work, raise the zipper foot, move the zipper slider, lower the presser foot, and sew on.

25



Transfer the mark for the zipper attaching seam end onto the other zipper tape. Shorten the zipper, leaving the "tails" 10 - 15 mm (3/8 - 9/16") long and attach the top stops. Working on the right side, stitch the other zipper tape to the center edge of the right front piece, just like the first one was attached. Right zipper tape should be exactly between the marks.

26



Tuck the zipper top extensions to the wrong side and secure them with straight stitching.

27



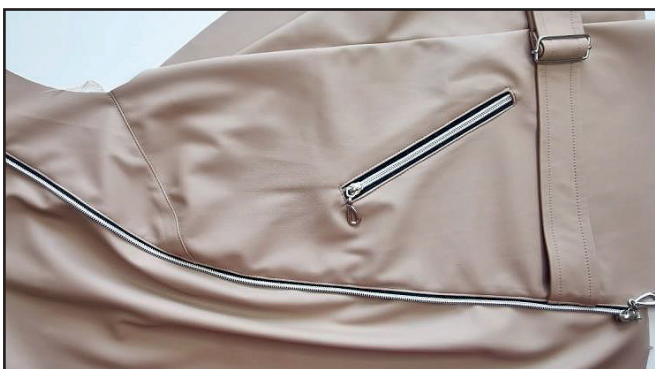
Finish the long edge of the left front piece with a serger. Press it.

28



With right sides together, secure the left center front piece and side front piece with sewing clips, aligning the marks. Stitch the pieces 10 mm (3/8") in from the edge along the zipper. Stitch from the side front piece, using unilateral zipper presser foot. Make sure that the stitching coincides exactly with the zipper attaching seam. Begin stitching from the shoulder edge and finish at the same level with the zipper bottom stop. Press the seam allowances towards the side front.

29



Topstitch the seam on the side front 1 mm (1/16") away from the edge. Press it.

30

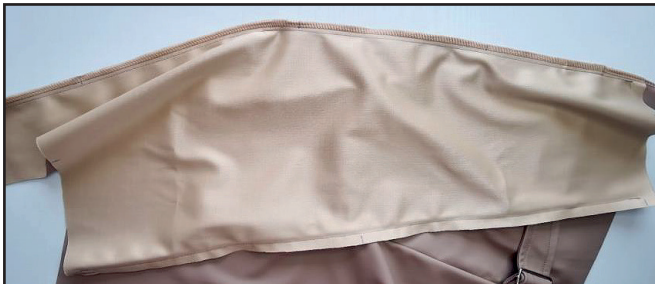


(3/8") before the center front piece lower hem.



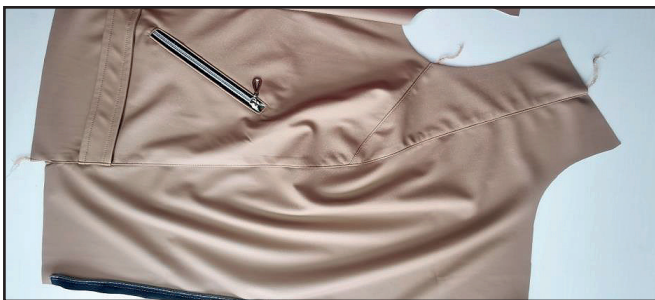
Join the right center front piece and side front piece, with right sides together, aligning the marks. Stitch the pieces 10 mm (3/8") in from the edge. Begin stitching from the shoulder edge and finish 10 mm

31



Finish the edges with a serger. Press the seam allowances flat towards the side front.

32



Topstitch the seam on the side front 1 mm (1/16") away from the edge. Press it.

33



Place the middle back pieces with right sides together. Stitch them along the center edge 10 mm (3/8") in from the edge.

34



Finish the edges with a serger. Press the seam towards the right.

35



Topstitch the seam on the right middle back 1 mm (1/16") away from the edge. Press it.

36



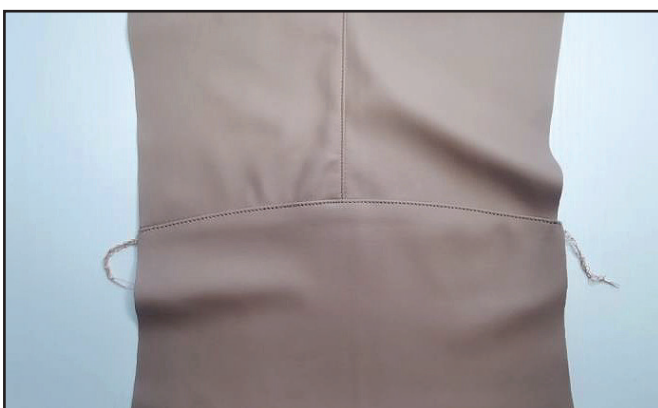
Place the middle and lower back pieces with right sides together. Stitch them 10 mm (3/8") in from the edge.

37



Finish the edges with a serger. Press the seam allowances down.

38



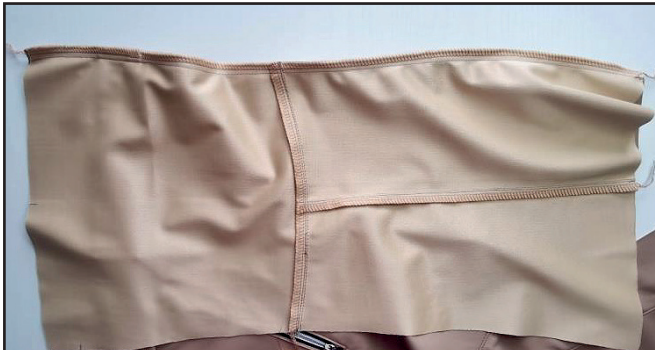
Topstitch the seam on the lower back 1 mm (1/16") away from the edge. Press it.

39



Place the middle back and side back with right sides together. Stitch them 10 mm (3/8") in from the edge.

40



Finish the edges with a serger. Press the seam allowances flat towards the center.

41



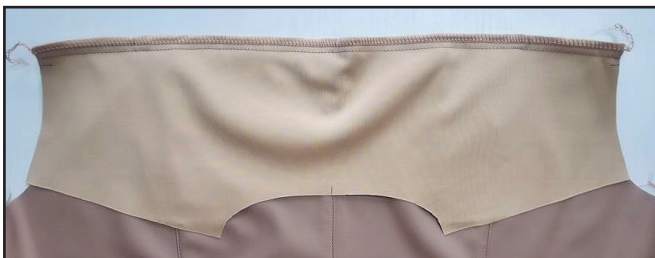
Topstitch the seam on the lower back 1 mm (1/16") away from the edge. Press the seam. Repeat the same steps for the other side front (steps 39 - 41).

42



Pin the back yoke to the back with right sides together. Stitch them 10 mm (3/8") in from the edge.

43



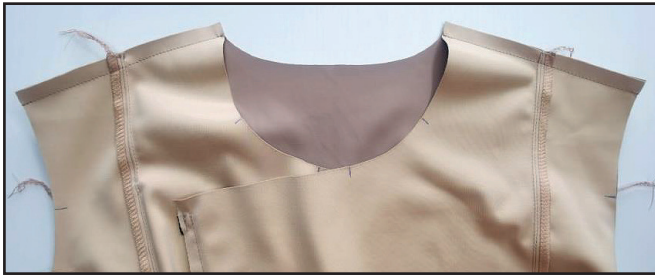
Finish the edges with a serger. Press the seam allowances up.

44



Topstitch the seam on the back yoke 1 mm (1/16") away from the seam. Press it.

45



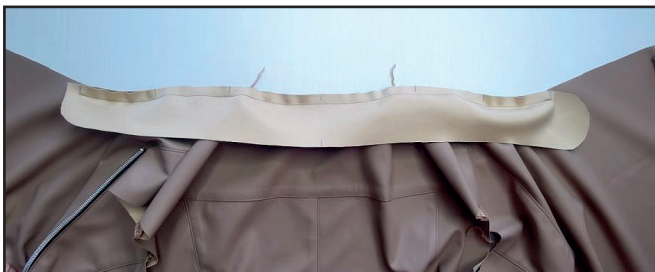
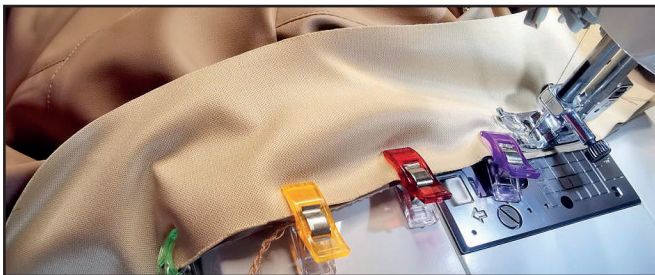
With right sides together, place the front and back along the shoulder edges. Stitch them 10 mm (3/8") in from the edge.

46



Serge the shoulders. Press the seam allowances flat towards the back.

47



With right sides together, place the stand collar to the jacket neckline aligning the marks. Secure the pieces with sewing clips. Be careful: the stand collar curved edge is placed to the right front piece. Stitch the stand collar 10 mm (3/8") in from the edge. Stitch on the stand collar.

48



Cut a strip of fabric 100x35 mm (4x1 3/8") to make a loop.

49



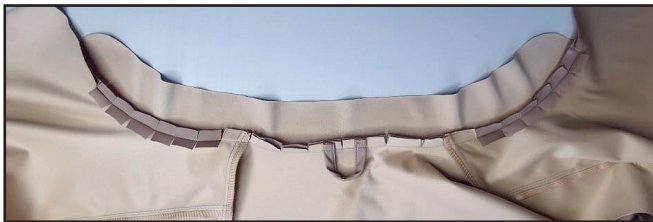
Double tuck the strip long edges right sides inside, secure them with sewing clips and then stitch 1 mm (1/16") in from the edge. Press it.

50



Working on the wrong side, stitch the loop to the center back neckline 10 mm (3/8") in from the edge.

51



Clip V shapes around the neckline seam allowances leaving 1 mm (1/16") before the seam. Press the front seam allowances open and then press the back seam allowances towards the stand collar.

52



Finish the outer and shoulder edges of the front facing pieces. Press the seam.

53



With right sides together, pin the lower stand collar to the front facings, aligning the marks. Stitch them 10 mm (3/8") in from the edge.

54



Slash the seam allowances leaving 1 mm (1/16") before the seam. Press the seam allowances open.

55



With right sides together, place and secure the upper and lower stand collars with sewing clips. Stitch the pieces 10 mm (3/8") in from the edge. Begin stitching from the stand collar attaching seam but avoid catching the seam allowances from the fronts and front facing sides.

56



Clip V shapes on the seam allowances along the curved edges, leaving 1 mm (1/16") before the seam.

57



With right sides together, place and secure the front right facing and the front, aligning the marks. Stitch the pieces with straight stitch along the lower, center and upper edges 10 mm (3/8") in from the edge. Stitch from the front piece, using unilateral zipper presser foot.

Make sure that the stitching coincides with the zipper attaching seam. Finish stitching just before the last stitch of the stand collar attaching seam but avoid catching the stand collar seam allowance. Repeat the process for the left front facing.

58



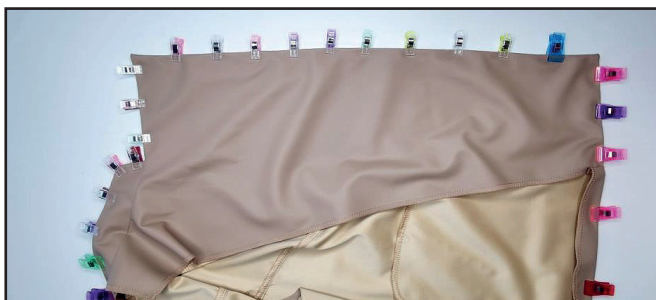
Trim the seam allowances right at the corner points. Turn the facings and the stand collar out.

59



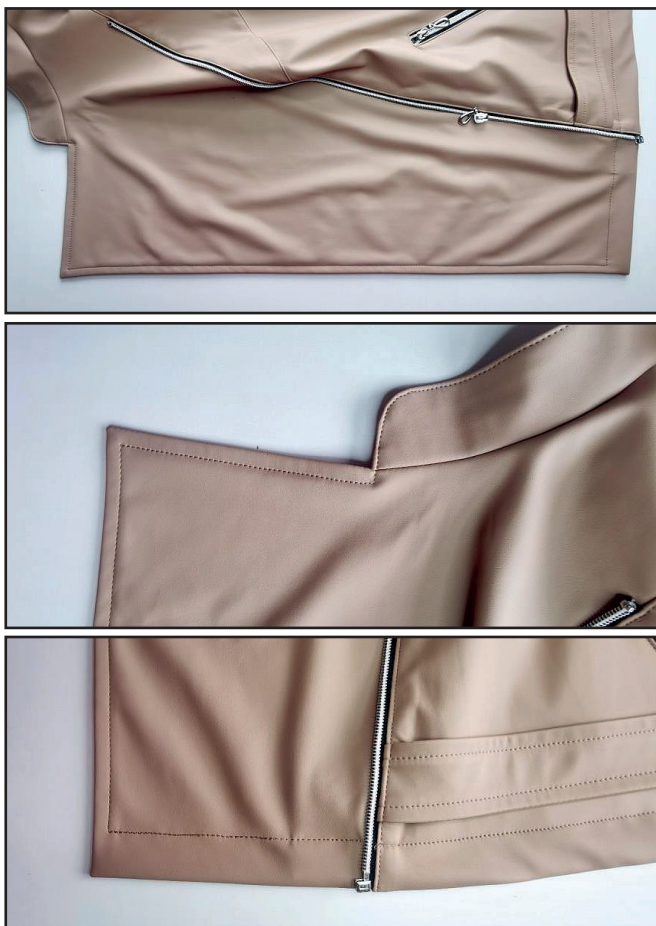
Align the side front lower hem with the front facing open edge. Stitch them 10 mm ($\frac{3}{8}$ ") in from the edge. The beginning of the seam should match the front piece and side front piece attaching seam.

60



Press and secure the fronts, stand collar, and lower hem fold edges. Fold the jacket lower hem by 30 mm ($1\frac{3}{16}$ "). The pocket lining lower hem should get between the folded lower hem and the front facing. The edge of the fold should coincide with the pocket bottom edge.

61



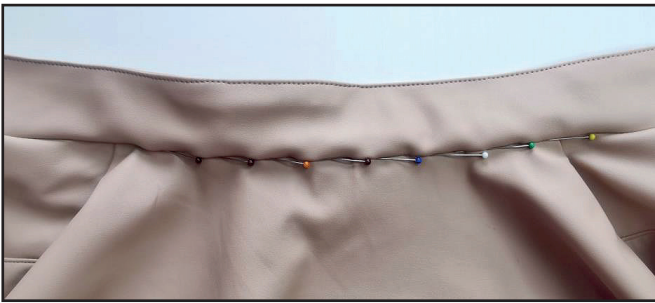
Topstitch all around the edges: the jacket lower hem at 25 mm (1") in from the edge, front facings at 5 mm ($\frac{3}{16}$ ") in from the edge and stand collar at 1 mm ($\frac{1}{16}$ ") from the edge. Begin and finish the seam very close to the zipper left tape, but do not stitch on the zipper itself. Press the seams.

62



Align the shoulder seams of front facings and the garment. Sew them with a straight stitch 7 mm (1/4") in from the edge and finish it as close to the stand collar as possible.

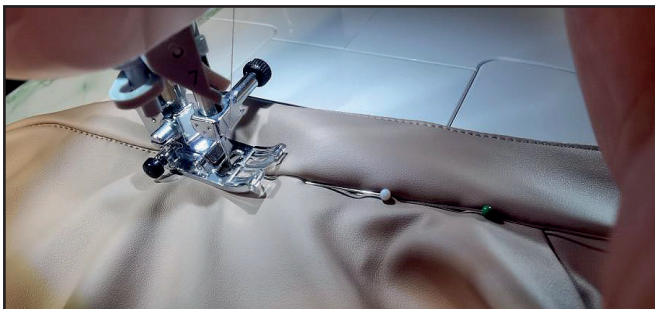
63



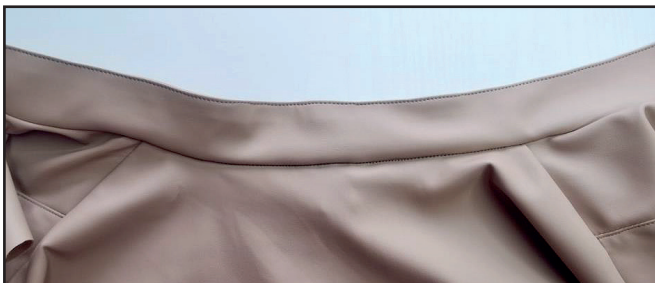
Pin the lower stand collar to the back neckline, so that its edge would overlap the attaching seam. Pin on the right side trying to get exactly into the attaching seam.



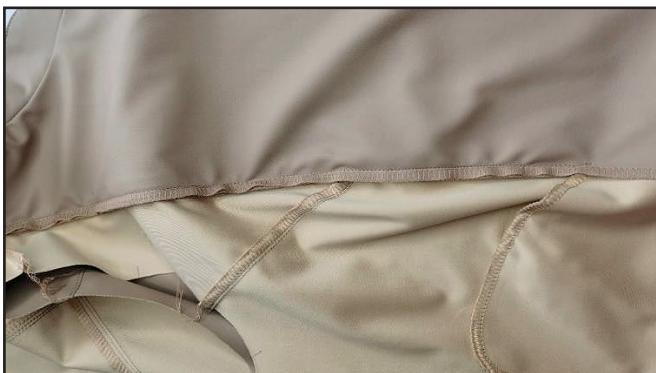
64



Topstitch on the garment right side, sewing exactly atop the seam of attaching collar to the neckline. Under collar edge should be exactly in the seam. Stitch along the back neckline between the shoulder seams. Press the stand collar.



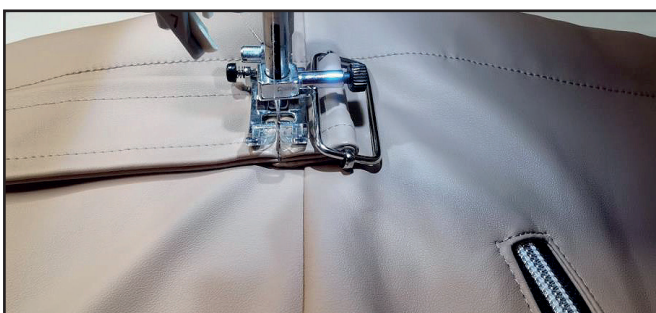
65



Smooth the front facing, front piece and pocket lining. Pin the other front facing edge to the center front attaching seam, aligning the marks and the pocket lining top edge. Stitch the front facing in place with unilateral zipper presser foot 4 - 5 mm (3/16") away from the edge.

Stitch from the shoulder seam till the pocket lining, sewing atop the pocket edge at 5 - 7 mm (4/8 - 1/4"). Repeat the process for the opposite front facing edge.

66



Secure the half belts with straight stitches. Stitch exactly atop the buckle attaching seam.

67



Place the upper sleeve and under sleeve, right sides together, along the outside sleeve seam. Stitch them 10 mm (3/8") in from the edge.

68



Finish the edges with a serger. Press the seam allowances towards the upper sleeve. Topstitch the seam 1 mm (1/16") away from the upper sleeve. Press it.

69



Place the upper sleeve and under sleeve, right sides together, along the side seam. Stitch them 10 mm (3/8") in from the edge.

70



Finish the edges with a serger. Press the seam allowances flat towards the upper sleeve.

71



Finish the sleeve lower hem with a serger. Press it.

72



Fold the sleeve hem at 30 mm (1 3/16") and secure it with sewing clips. Topstitch the folded hem 25 mm (1") away from the folded edge. Press the sleeve lower hem.

73



Stitch two parallel seams 6 mm (1/4") and 4 mm (1/8") in from the edge. Set maximum stitch length (4 - 5 mm), do not backstitch at the seam ends and leave the thread tails at the ends of the seams at least 30 mm (1 3/16").

74



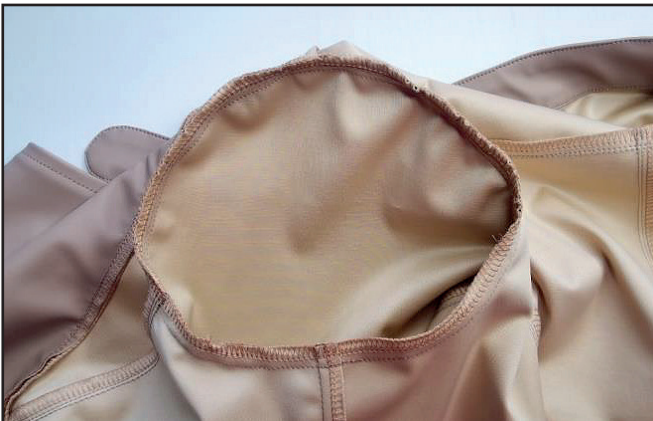
With right sides together, secure the sleeve in the armhole with sewing clips, aligning the marks and sleeve cap top mark with shoulder seam. If there are excess fabric gathers, tighten the sleeve cap to the armhole size by pulling the needle threads of the parallel seams stitched before. Tie the thread tails at the ends of the seams. To avoid forming crease marks, readjust the folds along the whole sleeve cap.

75



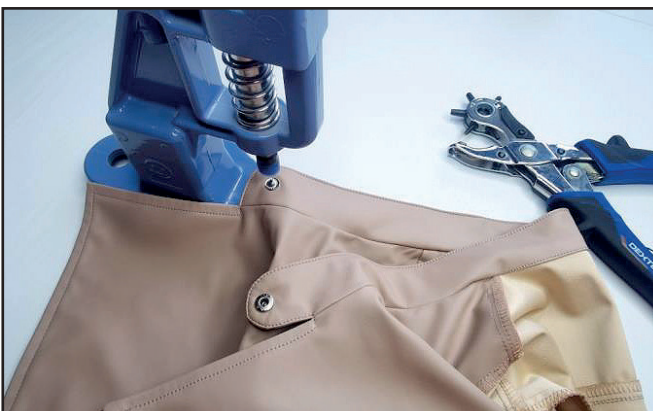
Stitch the sleeve into the armhole 10 mm (3/8") in from the edge. Stitch on the sleeve side, caring there aren't folds along the sleeve cap.

76



Finish the seam allowances with a serger. Press the seam up. Repeat the same steps for the opposite sleeve (steps 67 - 76).

77



Transfer the mark for the snap button from the paper pattern. Punch 2 mm (1/16") hole with a Hole Punch or scissors. Attach the snap button with a press.

78



Remove the basting stitches, trim, and hide the thread tails and press the garment once again. The jacket is ready!

ELINA PATYKOVA

ПРО ШИТЬЕ

**THANK YOU FOR JOINING MY TEAM AND ME!
SHARE YOUR WORKS IN INSTAGRAM AND MY
GROUP IN VKONTAKTE. HOPE YOU WILL STAY
WITH US FOR OUR NEXT PROJECT!**