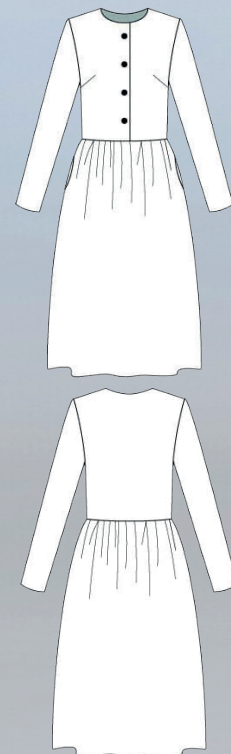


DRESS LENA 2.0 FOR WOMEN

SKILL LEVEL



INSTRUCTIONS FOR SEWING

ELINA PATYKOVA
—
ПРО ШИТЬЕ



ELINA_PATYKOVA



ELINA-PATYKOVA.RU



VK.COM/ELINA_PATYKOVA



FOR TAILORING YOU WILL NEED:

- main fabric - linen,
- buttons 1.5 - 2 cm (9/16 - 13/16") – 4 – 5 pcs.,
- fusible interfacing,
- matching thread,
- Universal 70 - 80 needles

A

Check the pattern for amount of fabric to take according to your size. Note: if the width of the fabric differs from the one specified in the table, the length of the cut is likely to be different. Before beginning your sewing project, wash the fabric in warm water, dry and iron it.

B

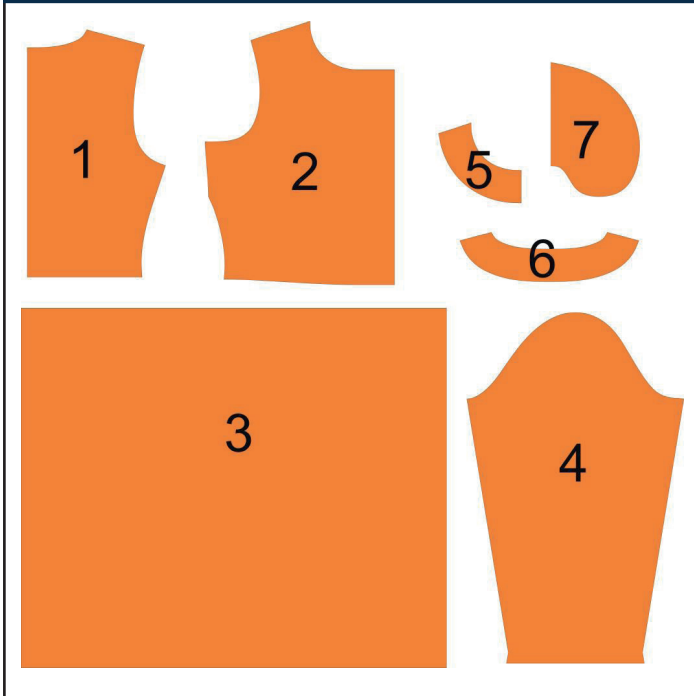
Let us start the cutting. Print and glue the paper patterns. When printing, do not forget to check the size of the test square.

C

Put the paper pattern pieces onto the fabric. It is important to check that the grain is straight. Pin the paper pattern pieces to the fabric gently and cut the fabric along them. Note: seam allowances are already included . Transfer all the necessary marks from the pattern onto the wrong side of your fabric.

NOW YOU HAVE
ALL THE PIECES:

DRESS PIECES:



- ① Back - cut 1 on the fold
- ② Front - cut 2
- ③ Skirt panel - cut 2
- ④ Sleeve - cut 2
- ⑤ Front facing - cut 2
- ⑥ Back facing - cut 1
- ⑦ Pocket - cut 4

NOW WE CAN START TAILORING

SYMBOLS:



straight stitch



the stitch length in (mm)



flat lock stitch



zigzag stitch



the stitch width in (mm)



3-Step Zigzag Seam Finishing



unilateral zipper presser foot



universal presser foot



invisible zipper presser foot



pinning

You should lockstitch the seam and trim the thread tails or tie the seam thread tails and hide them into the seam after sewing a serger stitch or cover seaming chain stitch.



3-thread serger stitch



4-thread serger stitch

NOTE:

A

4-thread serger stitch

If you do not have a serger, you can use stretch stitches available on your sewing machine, or at least, a zigzag stitch.

B

3-thread serger stitch

If you do not have a serger, you can replace it with an overedge stitch, or a zigzag stitch.

C

flat lock stitch

If you do not have a coverstitch machine, the flat seam can be performed with a) a twin needle on a sewing machine, b) decorative stretch seam on a sewing machine, c) finish the seams with serger and stitch them with a straight stitch.

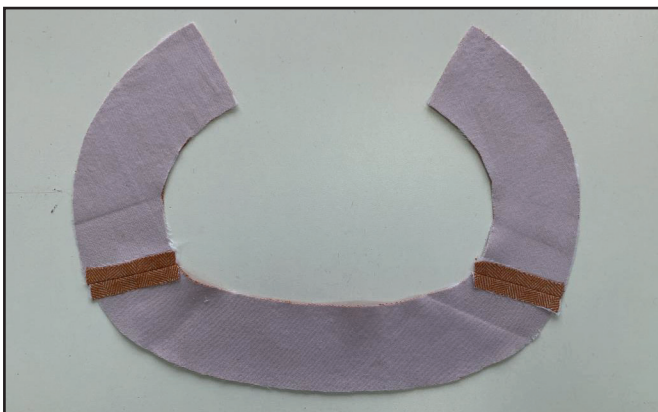
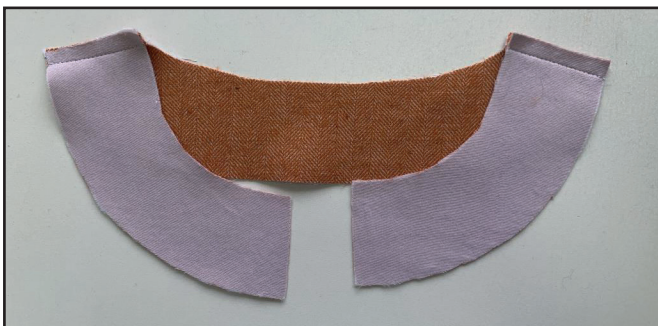
SEWING GUIDE

1



Fuse the interfacing to the front and back facings.

2



Place the front facings to the back facing, right sides together, and pin shoulder edges aligning the marks. Stitch them 1 cm (3/8") in from the edge. Press the seam allowances open.

3



Finish the facing outer edge.

4

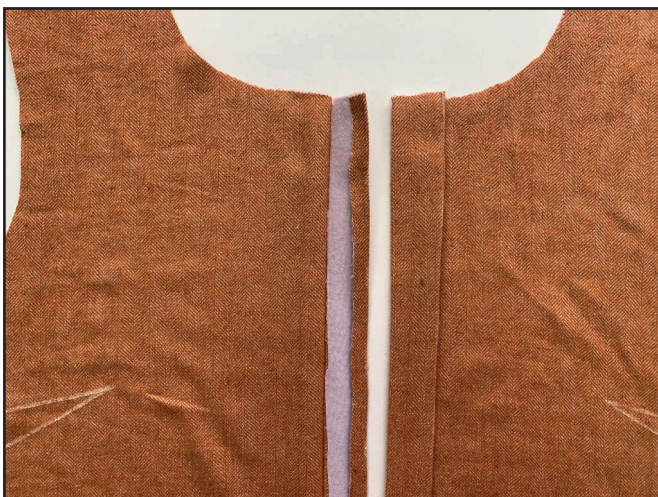


Working from the wrong side, fuse a strip of interfacing 4 cm (1 9/16") wide to the front center edges.

5



Press the front center edges towards the wrong side by 4 cm (1 9/16"). Then press the front center seam allowances 1 cm (3/8") wide towards the wrong side. Now you have a placket for buttons and buttonholes.



6



2,5-3

Pin and stitch the darts on the fronts. Press them upward.

7



Place the back and the fronts, right sides together, and stitch side and shoulder seams 1 cm (3/8") in from the edge.

8



Finish the seam allowances with a serger and press them towards the back.

9



With right sides together, place the front center edges and the front facing center edges and stitch them 1 cm (3/8") in from the edge, then press the seam allowances towards the fronts.



10



2,5-3

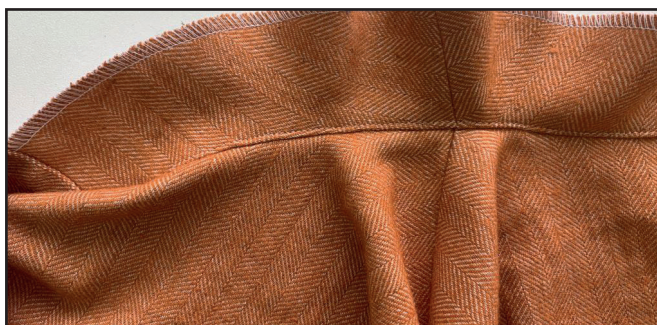
With right sides together, place the facing to the bodice and pin them aligning the marks and the shoulder seams. Stitch them 7 mm (1/4") in from the edge. Note: you should turn the front button placket out to the wrong side.

11



Make notches around the neck edge 1-2 mm (1/16") before the stitching.

12



Topstitch the seam allowances to the facing, where possible, 1 - 2 mm (1/16") away from the previous seam.

13



Fold the facing to the bodice wrong side and press the neckline forming a roll 1 mm (1/16") towards the facing.

14



3-3,5

Topstitch the button plackets towards the bodice 1 - 2 mm (1/16") away from the fold.

15



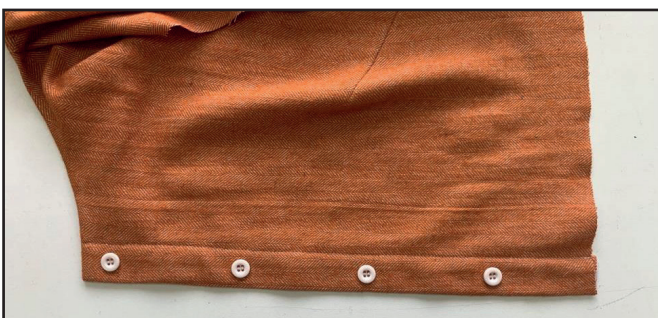
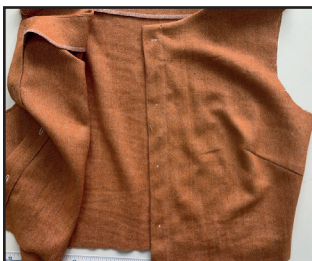
Hand-baste the facing to the shoulder seam allowances.

16



Transfer the marking for the buttonholes from the pattern to the right front. Sew buttonholes and cut them.

17



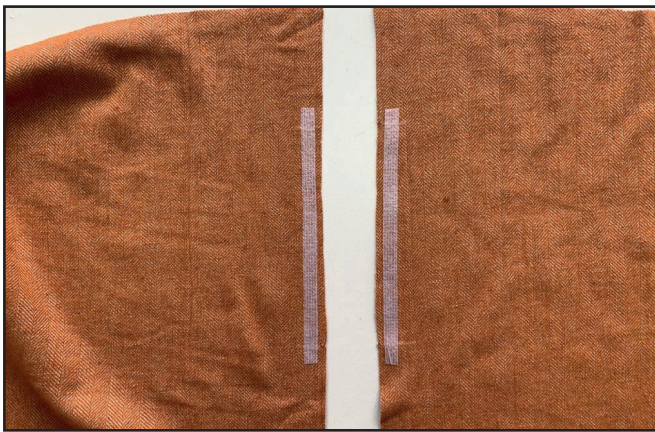
Pin the fronts together overlapping the button placket width by 3 cm (1 3/16"). Transfer the marking for buttons onto the left front. Attach the buttons.

18



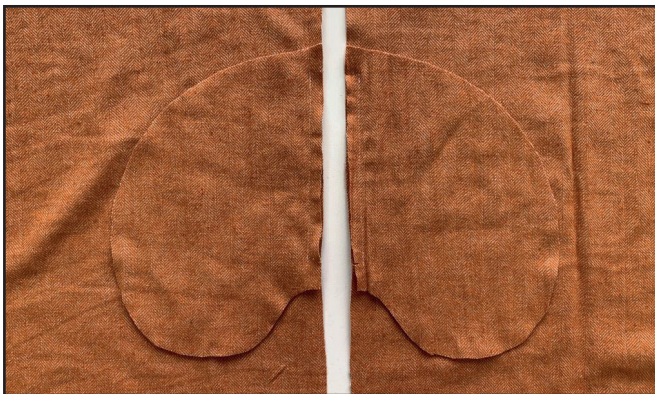
Fasten the buttons. Pin the fronts together along the lower edge. Stitch them 5 - 7 mm (3/16 - 1/4") in from the edge.

19



Fuse a strip of interfacing 12 - 15 mm (1/2 - 9/16") wide to both pocket openings on both skirt panels. The strip length is equal to the interval between the marks + 1 cm (3/8") from each side. If you have a narrower kantenband, press it 3 - 5 mm (1/8 - 3/16") away from the edge.

20



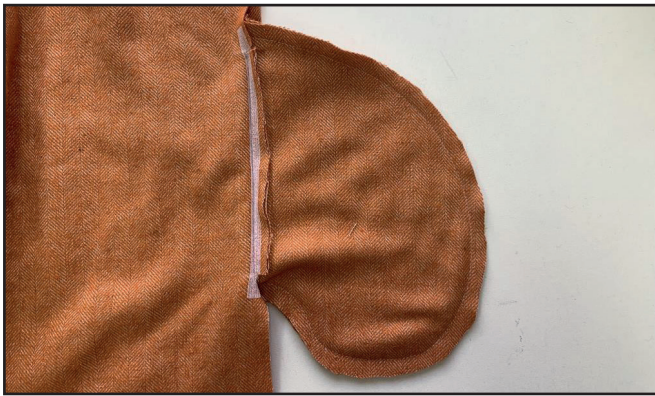
With right sides together, place the pockets to the skirt panels and pin them aligning the marks. Stitch them exactly between the marks 1 cm (1/16") in from the edge.

21



Clip the seam at the top and bottom of the pockets, 1 - 2 mm (1/16") before the seam, only on one skirt panel (it will be front panel). Turn the pocket lining to the wrong side and press the pocket opening.

22



Place both skirt panels with right sides together and pin the pocket linings. Stitch them 1 cm (3/8") in from the edge.

23



Finish the seam allowances with a serger and press the seams.

24



Pin both skirt panels together along the side edges. Stitch them 1 cm (3/8") in from the edge. Stitching should be done in two steps:

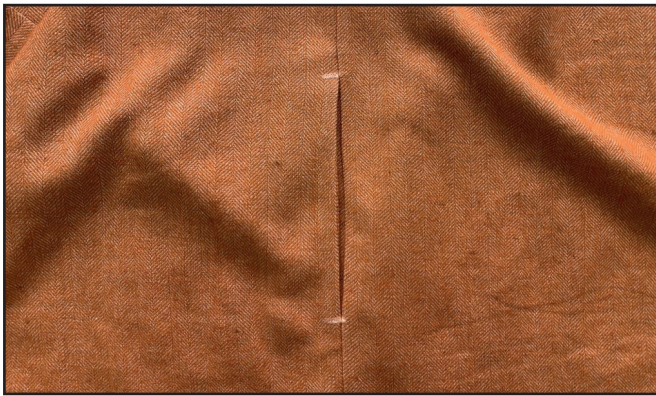
- from the skirt upper edge to the pocket opening upper mark;
- from the pocket opening lower mark to the skirt lower edge.

25



Finish the seam allowances with a serger and press them towards the skirt back panel.

26



3-3,5

Sew horizontal bar tacks above and below the pocket opening on the skirt front panel.

27



5-6

Stitch two parallel seams along the skirt upper edge 4 and 7 mm (3/16 and 1/4") in from the edge, having set max stitch length and min needle thread tension. Do not backstitch at the beginning and the end of the seam.

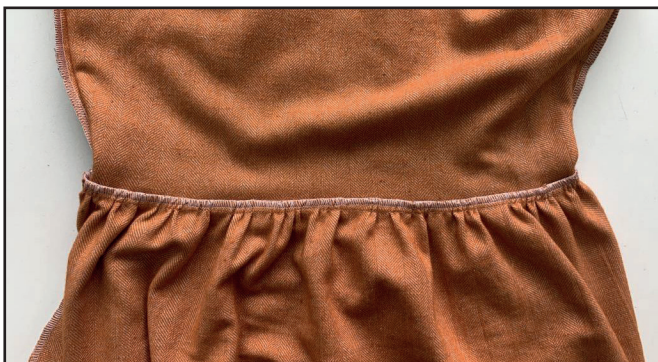
28



2,5-3

Place the skirt and the bodice with right sides together and pin them aligning the marks. Gather the skirt upper edge by pulling on the bobbin threads. Stitch them 1 cm (3/8") in from the edge and remove the previous stitching (those needed for gathering).

29



Finish the seam allowances with a serger and press them towards the bodice.

30



Place each sleeve in half, right side inside, and stitch the side seams.

31



Finish the seam allowances with a serger and press them towards the sleeve fronts.

32



Place the bodice and the sleeves, right sides inside, and pin them aligning the marks. Stitch them 1 cm (3/8") in from the edge.



Finish the seam allowances with a serger and press them towards the bodice. Tie the thread tails and hide them into the seam.

33



Finish the skirt and sleeve hem allowances with a serger. Press 2 cm (13/16") of them to the wrong side.

34



Topstitch the seam allowances towards the skirt and the sleeves 15 - 17 mm (9/16 - 11/16") away from the fold. Press the seams.

35



Remove the basting stitches and press the garment. The dress is ready!

ELINA PATYKOVA

ПРОШИТЬЕ

**THANK YOU FOR JOINING MY TEAM AND ME!
SHARE YOUR WORKS IN INSTAGRAM AND MY
GROUP IN VKONTAKTE. HOPE YOU WILL STAY
WITH US FOR OUR NEXT PROJECT!**