

RIB KNIT FABRIC BRA TOP FOR WOMEN

SKILL LEVEL



INSTRUCTIONS FOR SEWING

ELINA PATYKOVA

ПРО ШИТЬЕ



ELINA_PATYKOVA



ELINA-PATYKOVA.RU



VK.COM/ELINA_PATYKOVA



FOR TAILORING YOU WILL NEED:

- rib knit fabric,
- elastic edging ribbon,
- elastic 5 -7 mm (3/16 -1/4") wide,
- lingerie cups (optional),
- elastic 2 cm (13/16") wide,
- matching thread,
- Jersey 75 - 80 or Stretch 75 - 80 needles

A

Check the pattern for amount of fabric to take according to your size. Note: if the width of the fabric differs from the one specified in the table, the length of the cut is likely to be different. Before beginning your sewing project, wash the fabric in warm water, dry and iron it.

B

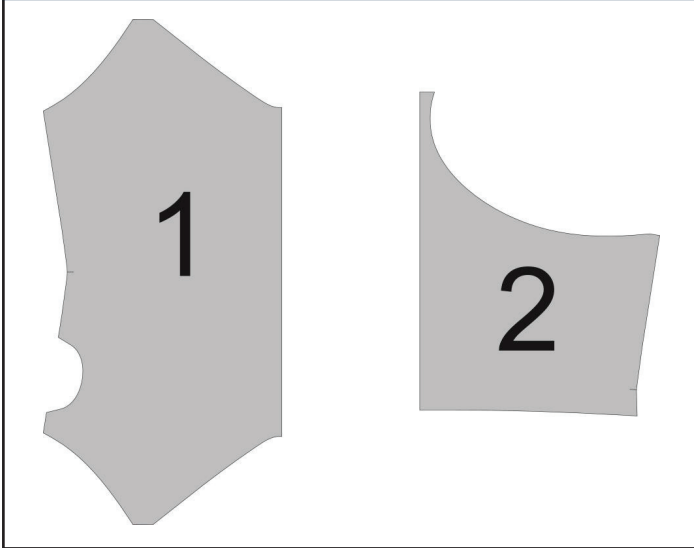
Let us start the cutting. Print and glue the paper patterns. When printing, do not forget to check the size of the test square.

C

Lay the paper pattern pieces onto the fabric. It's important to check that the grain is straight. Pin the paper pattern pieces to the fabric gently and cut the fabric along the outline. Note: seam allowances are already included. Transfer all the marks from the pattern onto the wrong side of your fabric.

**NOW YOU HAVE
ALL THE PIECES:**

BRA TOP PIECES:



- ① Front - cut 1 on the fold
- ② Back - cut 1 on the fold

NOW WE CAN START TAILORING

SYMBOLS:



straight stitch



the stitch length in (mm)



flat lock stitch



zigzag stitch



the stitch width in (mm)



3-Step Zigzag Seam Finishing



unilateral zipper presser foot



universal presser foot



invisible zipper presser foot



pinning

You should lockstitch the seam and trim the thread tails or tie the seam thread tails and hide them into the seam after sewing a serger stitch or cover seaming chain stitch.



3-thread serger stitch



4-thread serger stitch

NOTE:

A

4-thread serger stitch

If you do not have a serger, you can use stretch stitches available on your sewing machine, or at least, a zigzag stitch.

B

3-thread serger stitch

If you do not have a serger, you can replace it with an overedge stitch, or a zigzag stitch.

C

flat lock stitch

If you do not have a coverstitch machine, the flat seam can be performed with a) a twin needle on a sewing machine, b) decorative stretch seam on a sewing machine, c) finish the seams with serger and stitch them with a straight stitch.

SEWING GUIDE

1



Finish the back upper short edge with a serger.

2



Press 2 cm (13/16") of the seam allowances along the back upper short edge and the back lower edge.

3



Fold the elastic edging ribbon in half, insert the back piece upper long edges and pin them slightly stretching the elastic edging ribbon.

4



Cut the elastic edging ribbon at the length, indicated in the pattern, measuring from the short top edge of the back.

5

5



Coverstitch the elastic edging ribbon.

6



Place the back and front pieces with right sides together, and pin the straps to the front. Stitch 4 - 5 mm (3/16") in from the edge.

7



Place the front in half, right side inside, and pin the upper edges. The back will be inside the piece.

8



Stitch only the strap section 7 mm (1/4") in from the edge.

9



Stitch the rest edges with a serger, having placed the elastic under the presser foot and slightly stretching it. You should do it for the edge to remain elastic, but at the same time not to stretch out during wearing.

10



Turn the front out to the right side and press the curved upper edge of the garment forming a roll 1 mm (1/16") towards the under front.

11



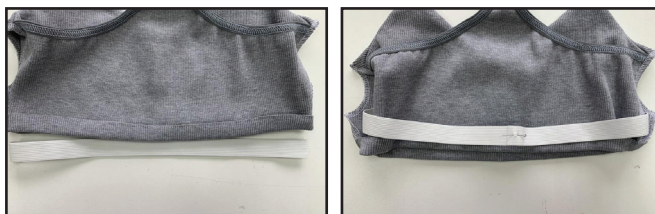
Finish the openings for cups on the front lower part with a serger. Press the seams.

12



With right sides together, place the upper front and the back, and also the under front to the back seam allowances, and pin them. Serge them. Turn the garment out to the right side through the opening for the lingerie cups.

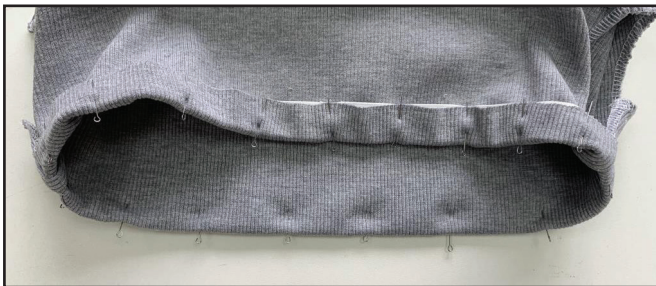
13



Measure the top lower hem, but avoid stretching it. Take elastic 2 cm (13/16") wide of this length + 1.5 cm for allowances. Insert the elastic between the upper front and under front and pin it's edges with overlap. Stitch the elastic in a ring.



14



Place the elastic as close to the front and back fold and pin them. Topstitch the elastic with a cover stitch. Tie the thread tails and hide them into the seam.



15



Hand-baste the side seams to the seam attaching the upper front to the back.

16



You can insert the cups into the bra top through the openings in the under front.

17



Remove the basting stitches and press the garment. The bra top is ready!

ELINA PATUKOVA

ПРО ШИТЬЕ

**THANK YOU FOR JOINING MY TEAM AND ME!
SHARE YOUR WORKS IN INSTAGRAM AND MY
GROUP IN VKONTAKTE. HOPE YOU WILL STAY
WITH US FOR OUR NEXT PROJECT!**