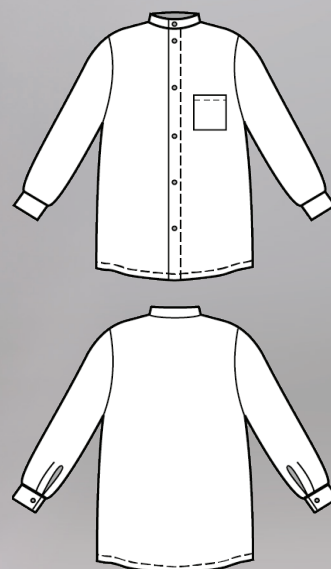


SHIRT CITY FOR BOYS

SKILL LEVEL



INSTRUCTIONS FOR SEWING

ELINA PATYKOVA
—
ПРО ШИТЬЕ



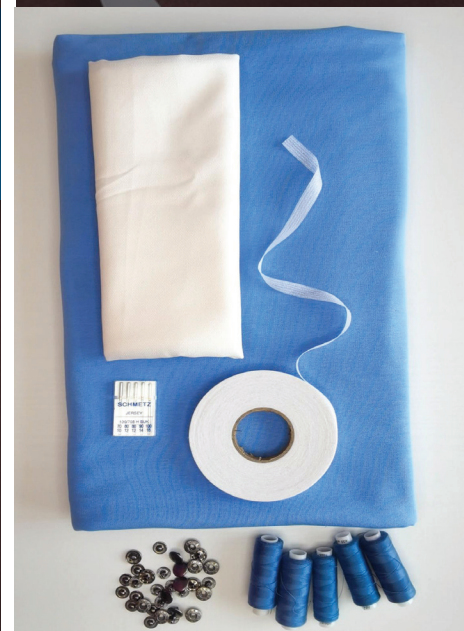
ELINA_PATYKOVA



ELINA-PATYKOVA.RU



VK.COM/ELINA_PATYKOVA



FOR TAILORING YOU WILL NEED:

- cotton lycra french terry,
- knit fusible interfacing,
- Alfa snap buttons 12,5 mm (1/2") - 8 pcs.,
- kantenband,
- matching thread,
- Jersey 70 - 80 or Stretch 70 - 80 needles

A

Check the pattern for amount of fabric to take according to your size. Note: if the width of the fabric differs from the one specified in the table, the length of the cut is likely to be different. Before beginning your sewing project, wash the fabric in warm water, dry and iron it.

B

Let us start the cutting. Print and glue all the paper patterns. When printing, do not forget to check the size of the test square.

C

Lay the paper pattern pieces onto the fabric. It's important to check that the grain is straight. Pin the paper pattern pieces to the fabric gently and cut the fabric along the outline. Note: seam allowance is already included. Transfer all the marks from the pattern onto the wrong side of your fabric.

NOW YOU HAVE ALL THE PIECES:

SHIRT PIECES:



- ❶ front - cut 2 (french terry)
- ❷ back - cut 1 on the fold (french terry)
- ❸ sleeve - cut 2 (french terry)
- ❹ cuff - cut 2 on the fold (french terry) and cut 2 on the fold (fusible interfacing)
- ❺ pocket - cut 1 (french terry)
- ❻ stand collar - cut 2 on the fold (french terry) and cut 1 on the fold (fusible interfacing)
- ❼ sleeve bias strip- cut 2 (french terry)

If the interfacing is too dense cut the interfacing pieces with 2 - 3 mm (1/16 - 1/8") seam allowances only, not to make the seams too thick. You can cut with pinking shears.

NOW WE CAN START TAILORING

SYMBOLS:



straight stitch



the stitch length in (mm)



flat lock stitch



zigzag stitch



the stitch width in (mm)



3-Step Zigzag Seam Finishing



unilateral zipper presser foot



universal presser foot



invisible zipper presser foot



pinning

You should lockstitch the seam and trim the thread tails or tie the seam thread tails and hide them into the seam after sewing a serger stitch or cover seaming chain stitch.



3-thread serger stitch



4-thread serger stitch

NOTE:

A

4-thread serger stitch

If you do not have a serger, you can use stretch stitches available on your sewing machine, or at least, a zigzag stitch.

B

3-thread serger stitch

If you do not have a serger, you can replace it with an overedge stitch, or a zigzag stitch.

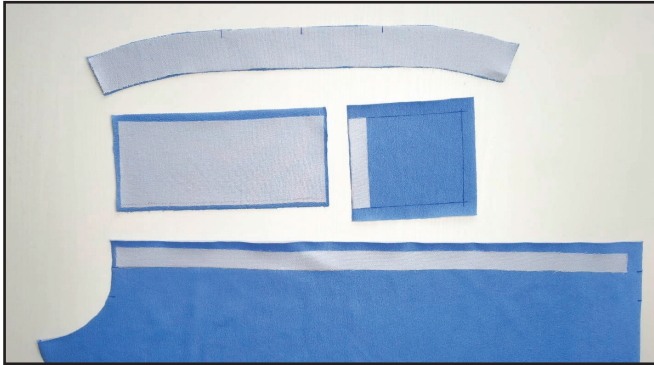
C

flat lock stitch

If you do not have a coverstitch machine, the flat seam can be performed with a) a twin needle on a sewing machine, b) decorative stretch seam on a sewing machine, c) finish the seams with serger and stitch them with a straight stitch.

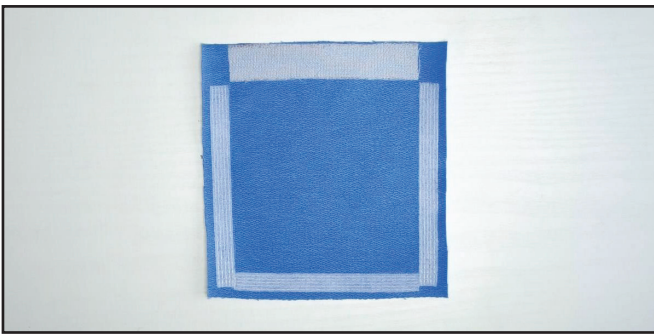
SEWING GUIDE

1



Fuse the interfacing to the stand collar, cuffs, the pocket top fold and the front plackets.

2



Reinforce the pocket side and bottom edges with kantenband to avoid seams stretching.

3



Press the pocket top edge 20 mm (13/16") to the wrong side. Pin, baste or glue it with a glue-stick to secure.

4

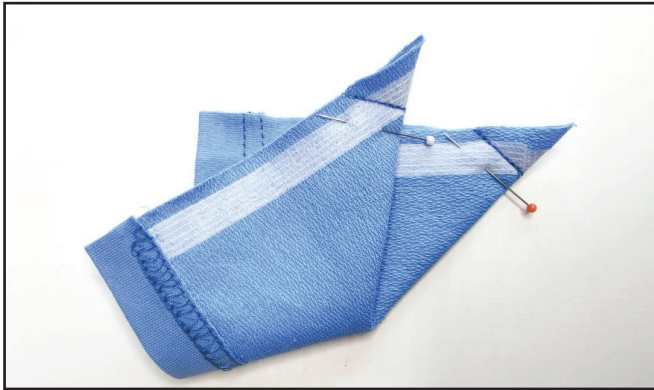


2-2,5

Hem the pocket top with a coverstich machine. Tie the thread tails on the wrong side and hide them into the seam. Press the fold.

5

5



Fold the pocket bottom corners at 45°, right side inside, and pin them. Draw two lines at 90° to the fold on the wrong side, as shown in the photo. The lines should start right at the corner top points of the ready pocket. Stitch along the marking.

6



Trim the seam allowances 3 mm (1/8") away from the seam and clip the corners.

7



Turn the corners out, shape the pocket. Press the pocket side and bottom edges to 15 mm (9/16"). For ease you can baste or glue the seam allowances with a glue-stick.

8



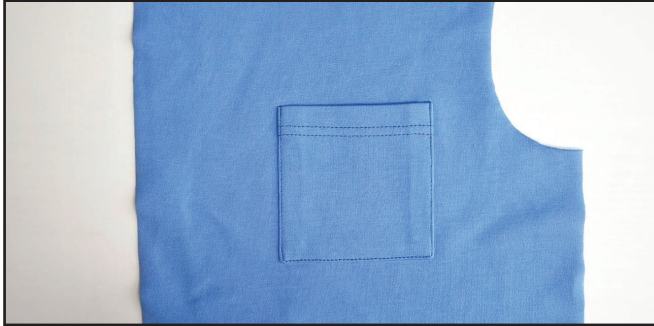
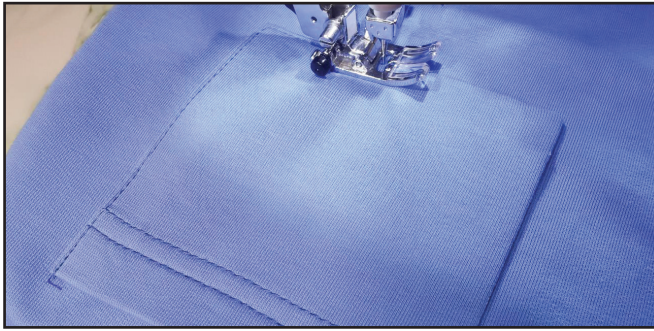
Transfer the pocket attaching lines from the paper pattern onto the left front piece right side.

9



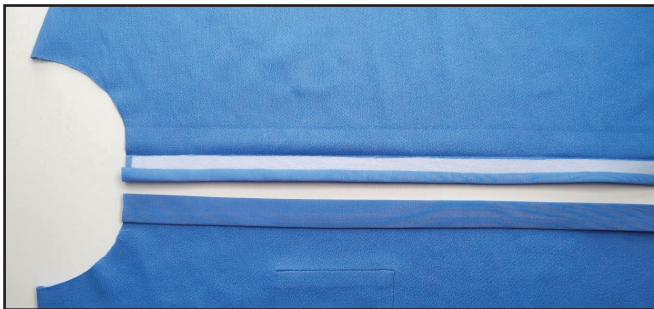
Secure the pocket atop the marking on the left front piece, right side up, with pins, a glue-stick or basting.

10



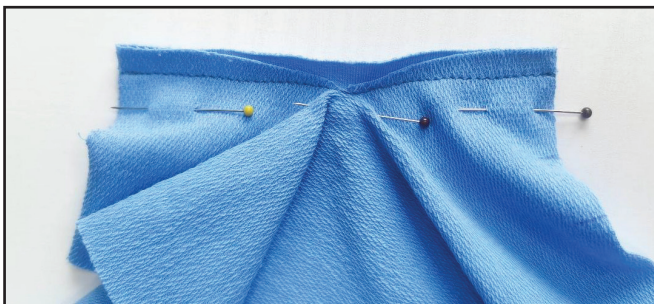
Use an edge stitch to sew the pocket in place about 1 mm (1/16") from the fold. Reinforce the seam both ends. Press the pocket.

11



Press the front plackets to the wrong side along the marked lines: first 10 mm (1/4"), and then 22 mm (7/8").

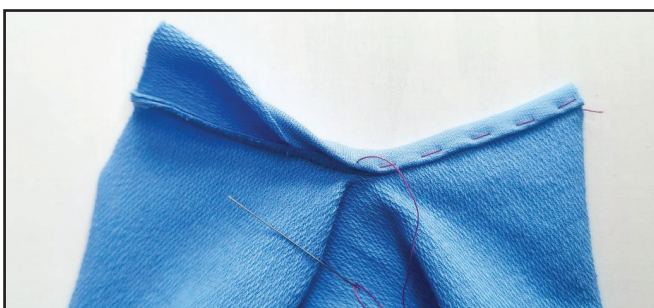
12



5 - 6 mm (3/16") lower the sleeve bias strip edge. Stitch the sleeve bias strip 7 mm (1/4") in from the edge. Stitch on the sleeve side, to avoid wrinkles. Press the seam allowances towards the sleeve bias strip.

Slash the sleeve along the sleeve split marking line, indicated on the pattern. Place the split to form a straight line. Pin the sleeve bias strip to the sleeve split with right sides together. The split sharp point is

13



Double tuck the sleeve bias strip to the wrong side around the seam allowance. Hand-stitch it so that the sleeve bias strip will overlap the seam. Press it with an iron.

14



Stitch it on the right side 1 mm (1/4") away from the fold. Make sure that the sleeve bias strip is stitched on the wrong side as evenly as on the right side. Remove the basting stitches and press it.

15



Fold the sleeve bias strip in half, right sides together, and perform a diagonal seam, like a dart, at the split top.

16



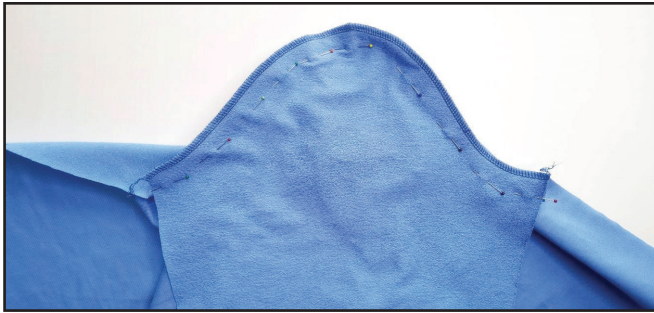
Tuck the sleeve bias strip of the front split edge (the edge is further than the side sleeve edge) inside, press and topstitch it 5 mm (3/16") in from the edge. Press the sleeve bias strip of the split back edge. The edge also becomes an extension for the fastener. Fold a pleat in the split direction according to the marks and pin it. Stitch the pleat 5 mm (3/16") in from the edge to secure. Repeat the same steps with the opposite sleeve (steps 12 - 16).

17



Pin the fronts and the back along the shoulder seams with right sides together. Serge the pieces. Press the seam allowances flat towards the fronts.

18



With right sides together, pin the sleeves into the armholes, carefully aligning the marks. Serge the sleeves in place. Press the seam allowances towards the front and the back.

19



With right sides together, pin the shirt pieces along the side seams aligning the marks. Serge the seams. Place the sleeve attaching seam allowances in different directions to avoid excess thickening. Press the seam allowances flat towards the fronts.

20



Draw a line along the shirt lower hem 40 mm (2 3/8") in from the edge. Use the line to fold the shirt lower hem 20 mm (1 3/16") up to the wrong side. Pin, baste or glue the folded hem to secure it. Press the shirt lower hem.

21



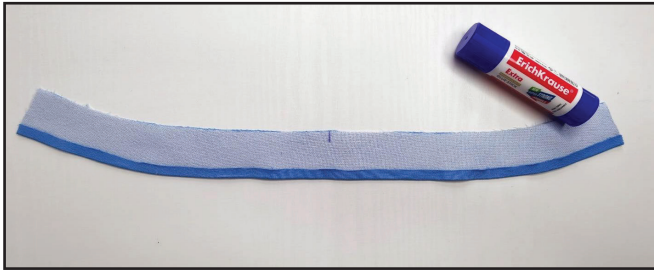
Hem the shirt with a coverstitch machine. Tie the thread tails on the wrong side and hide them into the seam. Press the fold.

22



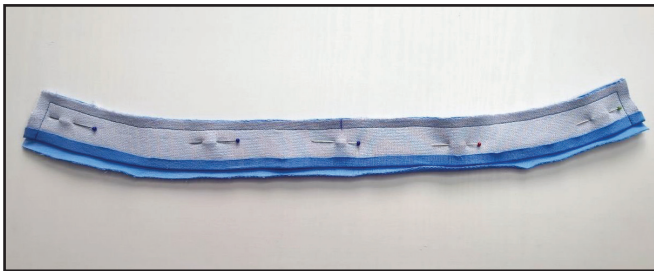
To secure the plackets, pin or glue them with a glue-stick, then topstitch them on the wrong side 1 mm (1/74'') away from the edge. Press the seams.

23



Press the seam allowance of the interfaced stand collar 7 mm (1/4'') to the wrong side. Baste or glue it with a glue-stick. It will be under collar.

24

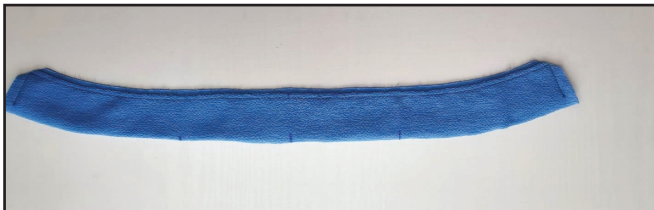


Pin the upper and under collars right sides together. Stitch along the top and side edges 7 mm (1/4'') away from the edge.

25



Trim the upper collar seam allowances to 3 - 4 mm (1/8'') and the corner tops. Turn the collar out and press it towards the under collar, forming a roll.



26



Draw a line along the tucked under collar lower edge.

27



side, slightly to the left of the drawn line. Press the seam allowances towards the stand collar.

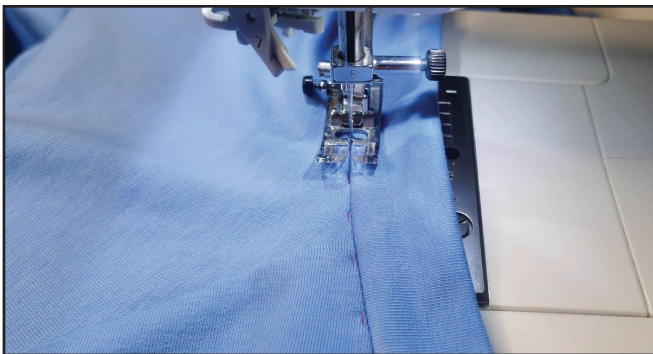
Pin the upper collar to the shirt neckline, right sides together, aligning the center marks and the shoulder mark with the dart. Stitch the pieces, working on the collar

28



Hand-baste the under collar to the neckline, overlapping the seam line. Press it with an iron.

29



Topstitch on the garment right side, sewing exactly atop the seam of attaching the collar to the neckline. The under collar edge should be exactly in the seam. If this step seems difficult, you can sew the under collar edge with a blind hand-stitch. Press the stand collar.



30



Fold the cuffs in half, lengthways, wrong side inside, and press them. Press one long edge seam allowance 7 mm (1/4") inside.

31



With right sides together, pin the cuff unfolded edge to the sleeve opening. Topstitch it 7 mm (1/4") away from the edge. Press the seam allowances towards the cuff.

32



Fold the cuff in half, right side inside. Pin the short side edges, tuck the seam allowances to the wrong side. Stitch the side edges 7 mm (1/4") in from the edge.

33



Trim the cuff seam allowances on the right side to 3 - 4 mm (1/8"). Trim the corner tops. Turn the cuff out and press it.

34



Hand-baste the cuff edge overlapping the seam line. Topstitch on the shirt right side, sewing exactly atop the seam of attaching the cuff to the sleeve opening. Another cuff edge should be exactly in the seam. If this step seems difficult, you can sew the edge with the blind hand-stitch. Remove the basting stitches and press the cuff. Repeat the same steps for the opposite cuff (steps 31 - 34).

35



Transfer the marks for the snap buttons onto the plackets, stand collar and cuffs. Punch 1 - 2 mm (1/16") holes with a Hole Punch or scissors. Attach the snap buttons with a Snap Press.

36



Remove the basting stitches, trim, and hide the thread tails and press the garment once again. The shirt is ready!

ELINA PATYKOVA

ПРО ШИТЬЕ

**THANK YOU FOR JOINING MY TEAM AND ME!
SHARE YOUR WORKS IN INSTAGRAM AND MY
GROUP IN VKONTAKTE. HOPE YOU WILL STAY
WITH US FOR OUR NEXT PROJECT!**