

ELINA PATYKOVA

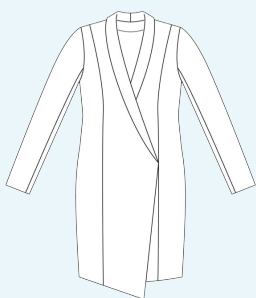
ПРО ШИТЬЕ

Instructions
for sewing

Blazer Dress

(for women)

#платье_пиджак_
блестки



Skill level



Materials and notions



- shell fabric - dense suit or suit-dressing fabric
- lining
- snap fasteners 1,5-2 cm (9/16-13/16") wide
- matching thread
- Universal 65-75 needles

If you are not sure about the fit of the garment, it is recommended to sew a muslin with similar properties (elasticity, thickness, drape) first. This will allow you to adjust the length, width and fit of the garment and save time.

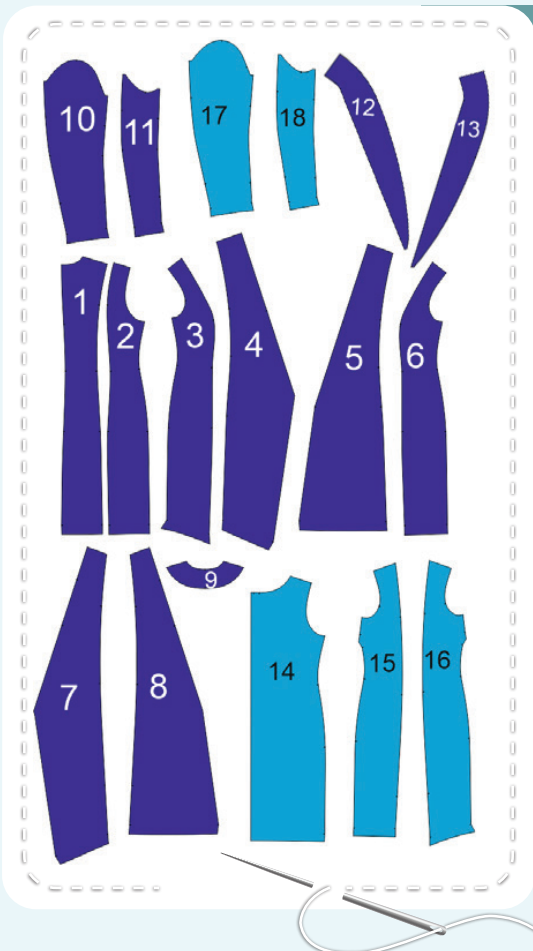
Before beginning your sewing project, wash the fabric on warm, dry, and iron it.

Let us start the cutting. Print and glue the paper patterns. When printing, do not forget to check the size of the test square.

Put the paper pattern pieces onto the fabric. It is important to check that the grain is straight. Pin the paper pattern pieces to the fabric gently and cut the fabric along them. Note: seam allowance is included. Transfer all the marks from the pattern onto the wrong side of your fabric.

Now you have

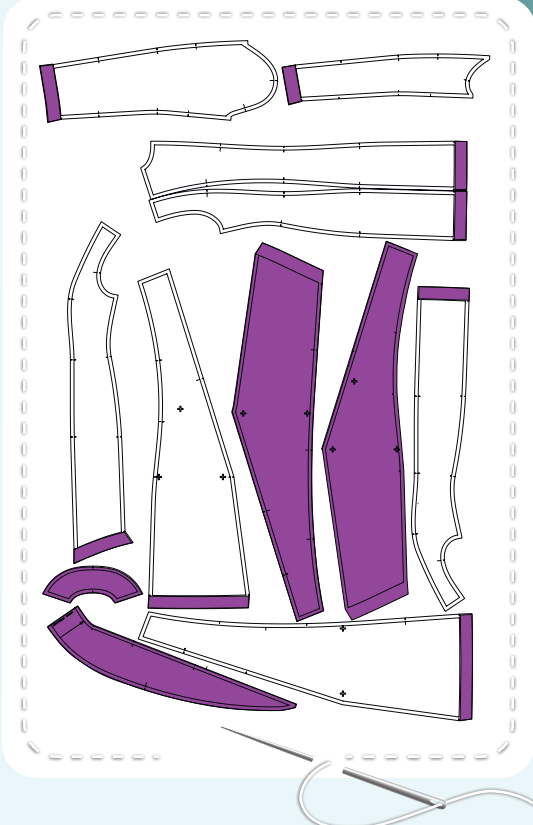
DRESS PIECES



1. center back - cut 2
2. side back - cut 2
3. right side front - cut 1*
4. right center front - cut 1*
5. left center front - cut 1*
6. left side front - cut 1*
7. right front facing - cut 1*
8. left front facing - cut 1*
9. back facing - cut 1
10. upper sleeve - cut 2
11. lower sleeve - cut 2
12. upper collar - cut 1 on the fold
13. under collar - cut 2
14. back lining - cut 1 on the fold
15. left front lining - cut 1*
16. right front lining - cut 1*
17. upper sleeve lining - cut 2
18. under sleeve lining - cut 2

* Cut these pieces on the right side.

PIECES TO INTERFACE



- fusible interfacing for stretchy fabric
- center back lower hems
- side backs lower hems
- right side front lower hem
- right center front lower hem
- left center front lower hem
- left side front lower hem
- right front facing
- left front facing
- back facing
- upper sleeve lower hems
- under sleeve lower hems
- upper collar

Construction

Symbols



straight stitch



the stitch length in (mm)



flat lock stitch



zigzag stitch



the stitch width in (mm)



3-Step Zigzag Seam Finishing



unilateral zipper presser foot



universal presser foot



invisible zipper presser foot



pinning

You should lockstitch the seam and trim the thread tails or tie the seam thread tails and hide them into the seam after sewing a serger stitch or cover seaming chain stitch.



3-thread serger stitch



4-thread serger stitch

NOTE

A

4-thread serger stitch

If you do not have a serger, you can use stretch stitches available on your sewing machine, or at least, a zigzag stitch.

B

3-thread serger stitch

If you do not have a serger, you can replace it with an overedge stitch, or a zigzag stitch.

C

flat lock stitch

If you do not have a coverstitch machine, the flat seam can be performed with a) a twin needle on a sewing machine, b) decorative stretch seam on a sewing machine, c) finish the seams with serger and stitch them with a straight stitch.

Construction



1



Fuse strips of interfacing 3,5 mm (1 3/8") wide to the lower hems of the following shell fabric pieces:

- center backs,
- side backs,
- side fronts,
- center fronts.

2



Place the center backs with right sides together and stitch the center back seam 1 cm (3/8") in from the edge. Press the seam allowances open.

3



Place the center backs and the side backs with right sides together and pin them. Stitch them 1 cm (3/8") in from the edge. Press the seam allowances open.

4



Place the center fronts to the side fronts with right sides together and stitch along the princess lines 1 cm (3/8") in from the edge. Press the seam allowances open.

5



2,5-3

Place the fronts to the backs with right sides together and stitch the side seams 1 cm (3/8") in from the edge. Press the seam allowances open.

6



2,5-3

Place the fronts to the backs with right sides together and stitch the shoulder seams 1 cm (3/8") in from the edge. Press the seam allowances open.

7



Fuse interfacing to the upper collar.

8



2,5-3

Place the under collar pieces with right sides together and stitch the center seam 1 cm (3/8") in from the edge. Press the seam allowances open.



9



2,5-3

Place the upper and under collars with right sides together and pin the outer edges aligning the marks. Stitch them 1 cm (3/8") in from the edge.

10



3-3,5

Topstitch the seam allowances on the under collar 1-2 mm (1/16") away from the previous seam.

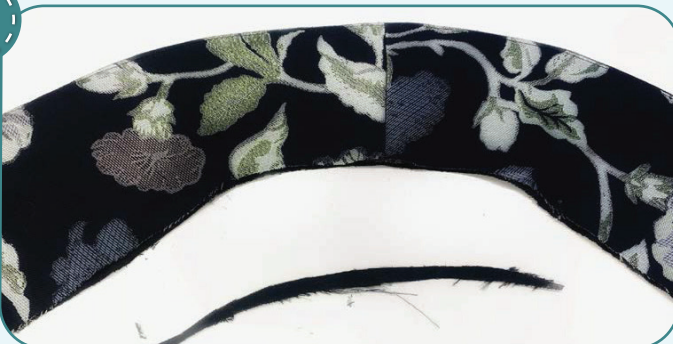
11



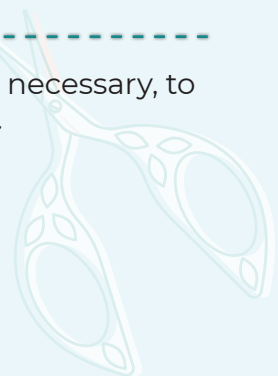
Turn the collar out to the right side and press the outer edge, forming a roll 1 mm (1/16") towards the under collar.



12



Trim the collar pieces where necessary, to make them the same width.



13



2,5-3

Place the collar to the neckline and the center front raw edges and pin them aligning the marks. Place the under collar to the garment right side. Stitch them 7-8 mm (1/4-5/16") in from the edge.

14



Fuse interfacing to the front facings and the back facing.

15



2,5-3

Place the front facings and the back facing with right sides together and stitch the shoulder seams 1 cm (3/8") in from the edge.

16



2,5-3

With right sides together, place the front facings and the back facing to the garment and pin them aligning the marks. Stitch them 1 cm (3/8") in from the edge.

17



Clip into curves, 1-2 mm (1/16") before the seam.

18



3-3,5

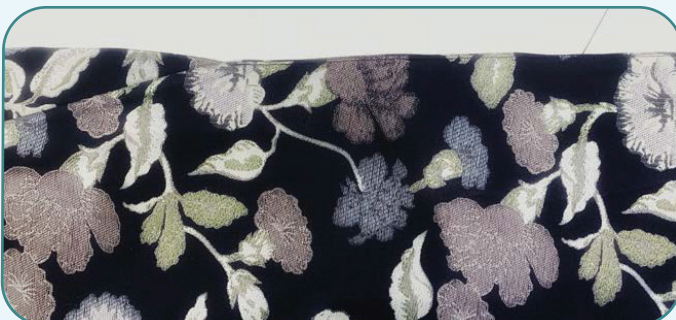
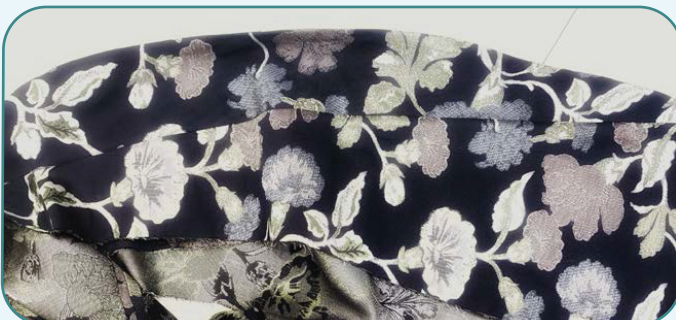
Topstitch the seam allowances towards the front facings, 1-2 mm (1/16") away from the previous seam on the section below the collar.

19

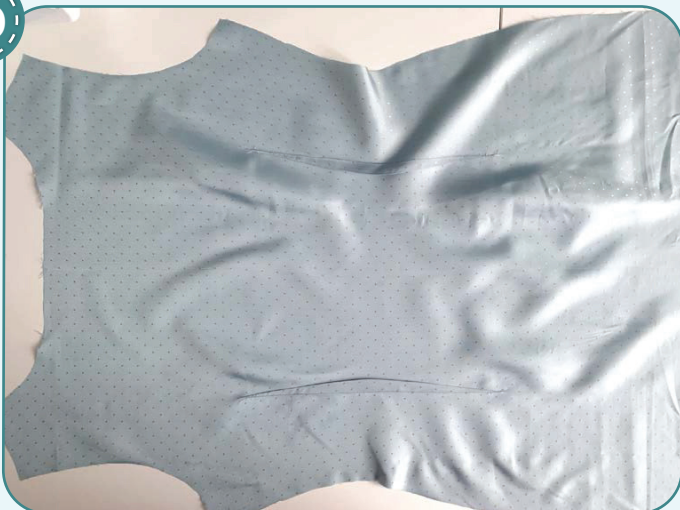


Fold back the front facings and the back facing to the garment wrong side and press the sides in this way:

- press the sides below the collar, forming 1 mm (1/16") roll towards the front facings;
- press the seam allowances upright (without a roll) at the collar area.



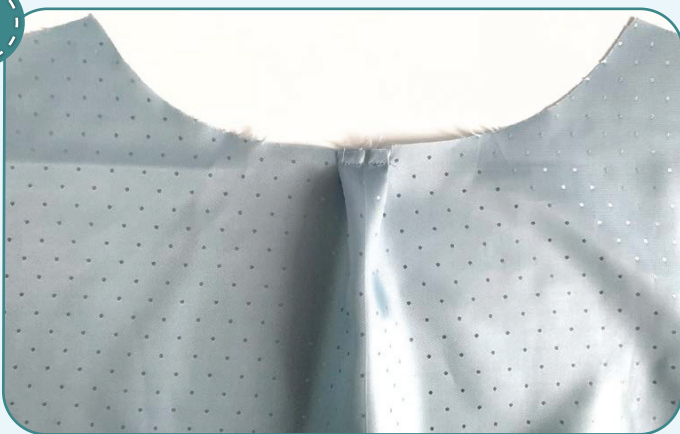
20



Pin the darts on the back and front linings and stitch them. Press them towards the front and the back centers.

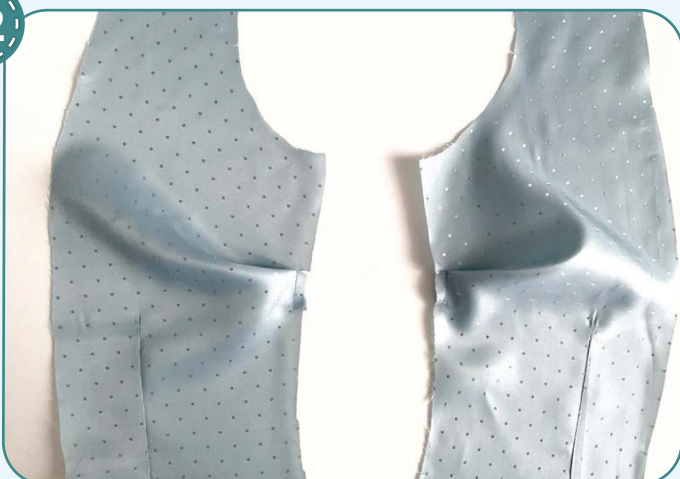


21



Pin the fold on the back lining along the neckline. Stitch it 7-8 mm (1/4-5/16") in from the edge.

22



Pin the folds on the front lining pieces. Stitch them 7-8 mm (1/4-5/16") in from the edge.

23



2-2,5

Place the back lining to the front linings with right sides together and pin the side and shoulder edges. Stitch them 1 cm (3/8") in from the edge. Leave an opening 15-20 cm (6-8") in the one of the side seams (to turn the garment out) and press the seam allowances towards the back.



24



Press the seam allowances (3,5 cm or 1 3/8") along the garment shell lower hem at all the pieces, except the center fronts and the front facings.

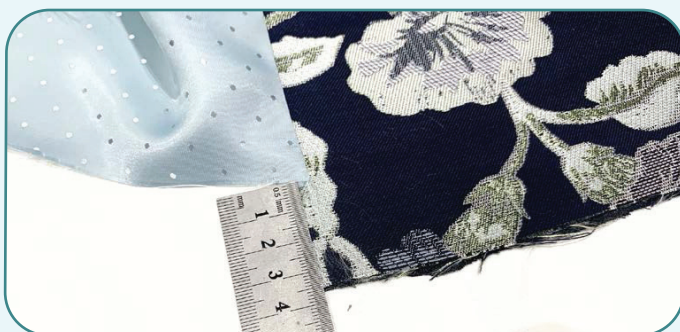
25



2-2,5

Place the front facings to the garment lining with right sides together and pin them aligning the marks. Stitch them 1 cm (3/8") in from the edge. Press the seam allowances towards the lining.

NOTE: The lining is 3,5 cm (1 3/8") shorter than the front facings.



26



2-2,5

Place the garment and the lining with right sides together and pin the lower hems aligning the marks.

NOTE: The front facings protrude. Stitch them 1 cm (3/8") in from the edge.

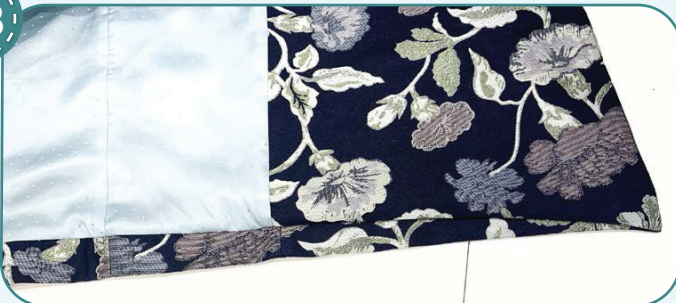


27



Trim the front facing protruding hems.

28

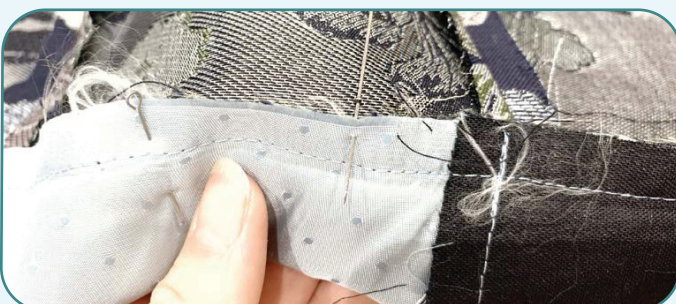


Turn the garment out to the right side, smooth the corner points gently and press the garment lower hem.

29



Turn the garment out to the wrong side. Unbend the seam allowances along the shell lower hem and pin them. Hand-baste the seam allowances to the garment with a blind stitch.



30



2-2,5

Place the upper and under sleeve linings with right sides together and stitch the sleeve inseams 1 cm (1/4") in from the edge. Press the seam allowances towards the under sleeves.

31



Fuse strips of interfacing 3 mm (1 3/16") wide to the lower hems of the sleeve shell pieces.

32



2,5-3

Place the upper and under sleeve shell pieces with right sides together and stitch the sleeve inseams 1 cm (1/4") in from the edge. Press the seam allowances open.

33



Press the sleeve lower hems to the wrong side at 3 cm (1 3/16").

34



2,5-3

Place the sleeves to the corresponding linings with right sides together, pin the lower hems aligning the marks. Stitch them 1 cm (3/8") in from the edge. Press the seam allowances towards the lining.

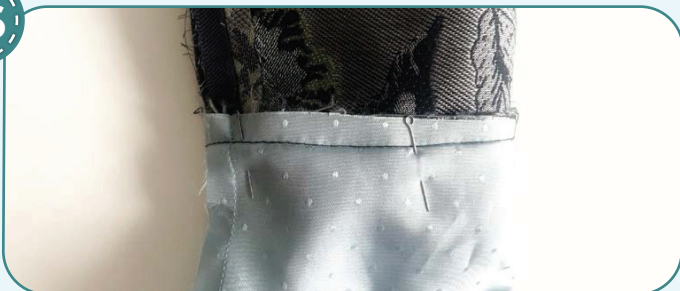
35



2,5-3

Place the piece, you have made, right side inside, and pin the elbow edges. Stitch them 1 cm (3/8") in from the edge. Reduce the stitch length when sewing the lining up to 2-2,5 mm (11/16"). Press the shell sleeve seam allowances open and press the lining seam allowances towards the under sleeve.

36



Unbend the sleeve shell lower hem along the fold and pin them. Hand-baste the seam allowances to the sleeves with a blind stitch.

37



2,5-3

Insert the shell sleeves into the garment shell armscyes and pin them aligning the marks. Stitch them around the edge with 1,5 cm (9/16") seam allowance. Stitch one more seam atop the previous one to reinforce it. Press the stitching, but do not press the pieces themselves.

38



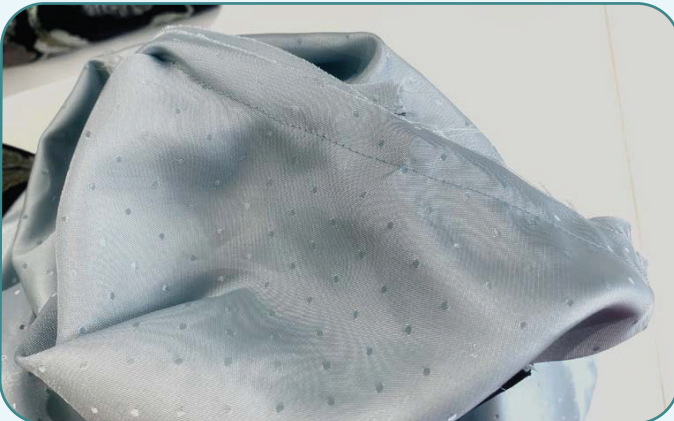
Smooth the sleeve lining, but avoid twisting it. Pin the sleeve lining to the garment lining, unbending the seam allowances towards the wrong side.

39

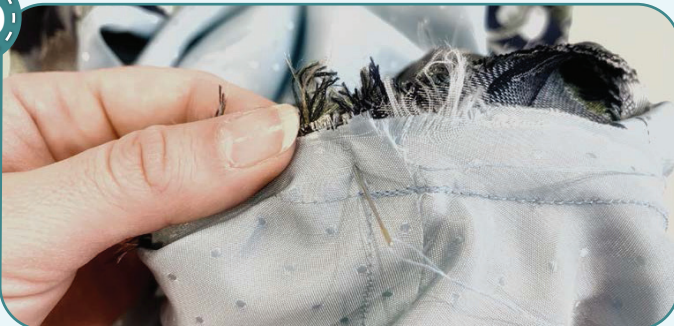


2-2,5

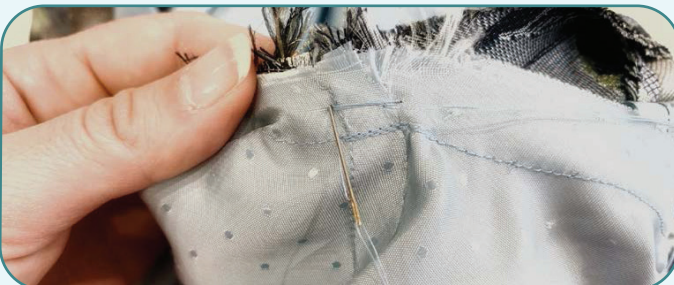
Get to the seam allowances through the opening, pin and stitch in the sleeves into the armholes in two steps, 1,5 cm (9/16") in from the edge. Press the stitching. Repeat the process for the other sleeve.



40

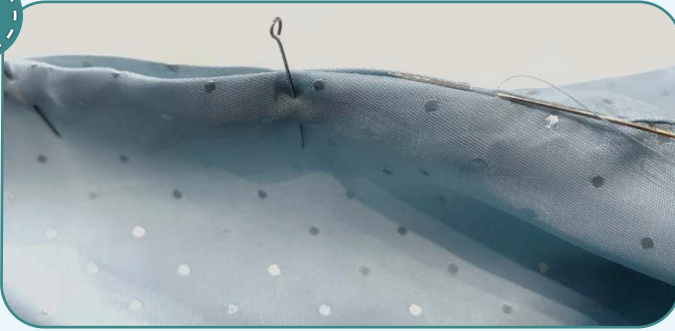


To secure the sleeve, hand-baste the sleeve shell seam allowances to the sleeve lining along the shoulder and side edges.





41



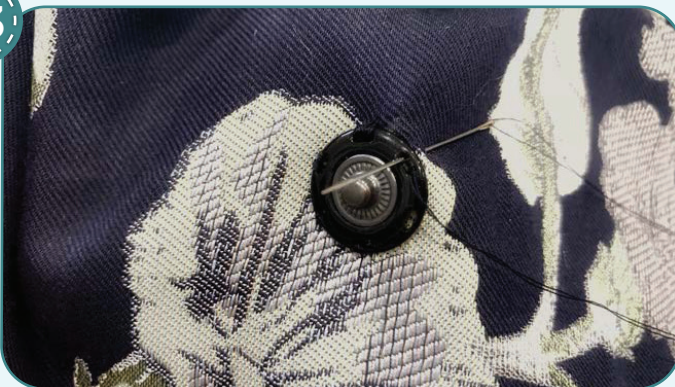
Pin the opening. Hand-baste it with a blind stitch.

42

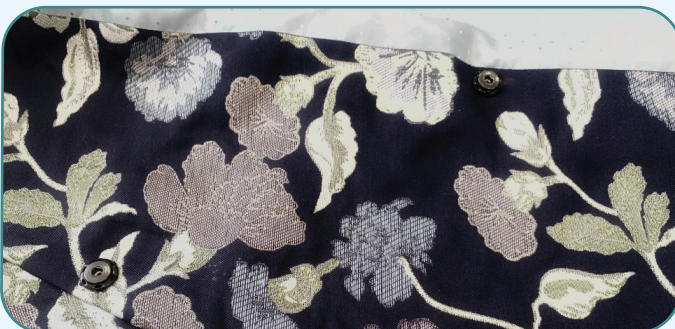


Transfer the marks for the snap fasteners onto the left front and the front right facing.

43



Hand-baste the snap fasteners and try the garment on. Adjust the snap fasteners position as you see fit. Hand-baste them with a strong stitch.



44



Remove the basting stitches and iron the garment. Your dress is ready!

ELINA PATYKOVA

ПРО ШИТЬЕ

Blazer Dress (for women)

Thank you for joining my team and me!
Share your works in instagram and my group in vkontakte. Hope you will stay with us for our next project!

