

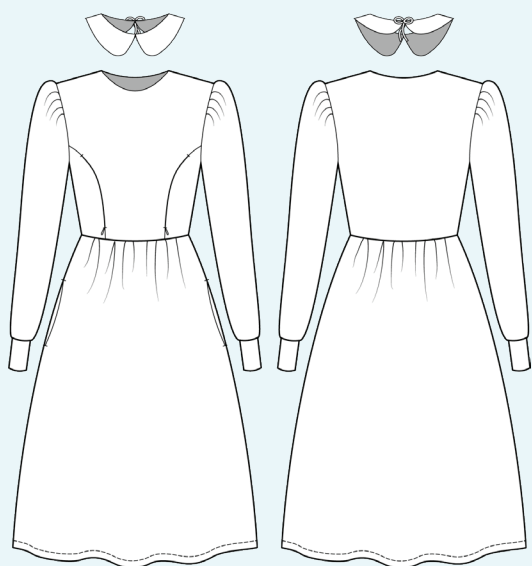
ELINA PATYKOVA

ПРО ШИТЬЕ

Instructions
for sewing

Dress Emerald (for women)

#изумруд_женщины



Skill level



Materials and notions



- jersey
- woven interfacing for stretchy fabric
- fusible interfacing band or stabilizing tape (for the garment with secret zippers for breastfeeding)
- invisible zipper 20 cm (7 7/8") - 2 pcs. (for the garment with secret zippers for breastfeeding)
- matching thread
- Jersey 80-90 or Stretch 80-90 needles

If you are not sure about the fit of the garment, it is recommended to sew a muslin with similar properties (elasticity, thickness, drape) first. This will allow you to adjust the length, width and fit of the garment and save time.

Before beginning your sewing project, wash the fabric in warm water, dry and iron it.

Let us start the cutting. Print and glue all the paper patterns. When printing, do not forget to check the size of the test square.

Put the paper pattern pieces onto the fabric. It is important to check that the grain is straight. Pin the paper pattern pieces to the fabric gently and cut the fabric along the outline. Note: seam allowances are already included. Transfer all the marks from the pattern onto the wrong side of your fabric.

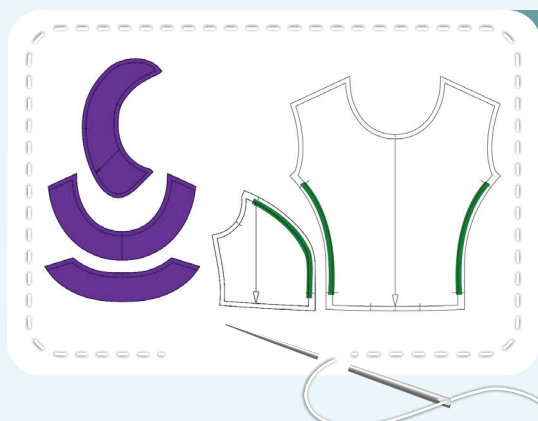
Now you have



DRESS PIECES:

1. side front - cut 2
2. center front - cut 1
3. back - cut 1 on the fold
4. skirt panel - cut 2 on the fold
5. sleeve - cut 2
6. cuff - cut 2
7. pocket lining - cut 4
8. back neck facing - cut 1
9. front neck facing - cut 1
10. collar - cut 4 (for both sewn-in and detachable collars)
11. tie string - cut 2 (for detachable collar)

NOTE: all the pieces for this garment have been cut from french terry.



PIECES TO INTERFACE:

- Lilac - woven interfacing for stretchy fabric
 - back neck facing
 - front neck facing
 - 2 collar pieces (mirroring) - for both sewn-in and detachable collars
- Green - stabilizing tape or fusible interfacing band
 - center front princess lines - for the garment with secret zippers
 - side front princess lines - for the garment with secret zippers

NOTE: you can make different dresses using this pattern: without a collar, with a sewn-in collar, with a detachable collar, with or without secret zippers for breastfeeding in the princess seams.

Construction

Symbols



straight stitch



the stitch length in (mm)



flat lock stitch



zigzag stitch



the stitch width in (mm)



3-Step Zigzag Seam Finishing



unilateral zipper presser foot



universal presser foot



invisible zipper presser foot



pinning

You should lockstitch the seam and trim the thread tails or tie the seam thread tails and hide them into the seam after sewing a serger stitch or cover seaming chain stitch.



double welting (piping) presser foot



3-thread serger stitch



4-thread serger stitch

NOTE

A

4-thread serger stitch

If you do not have a serger, you can use stretch stitches available on your sewing machine, or at least, a zigzag stitch.

B

3-thread serger stitch

If you do not have a serger, you can replace it with an overedge stitch, or a zigzag stitch.

C

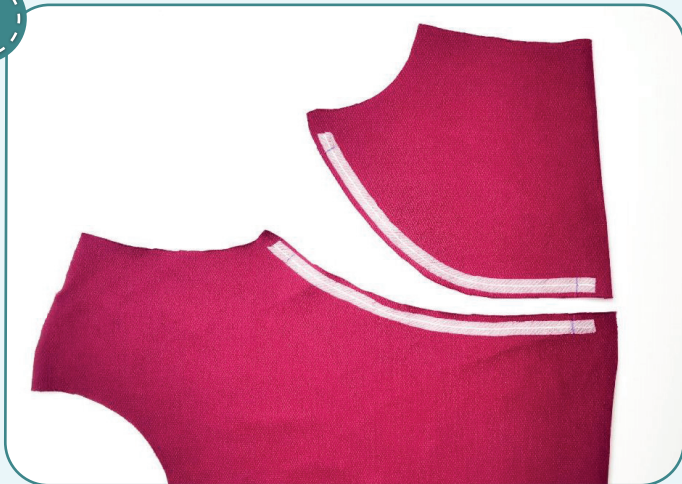
flat lock stitch

If you do not have a coverstitch machine, the flat seam can be performed with a) a twin needle on a sewing machine, b) decorative stretch seam on a sewing machine, c) finish the seams with serger and stitch them with a straight stitch.

Dress construction



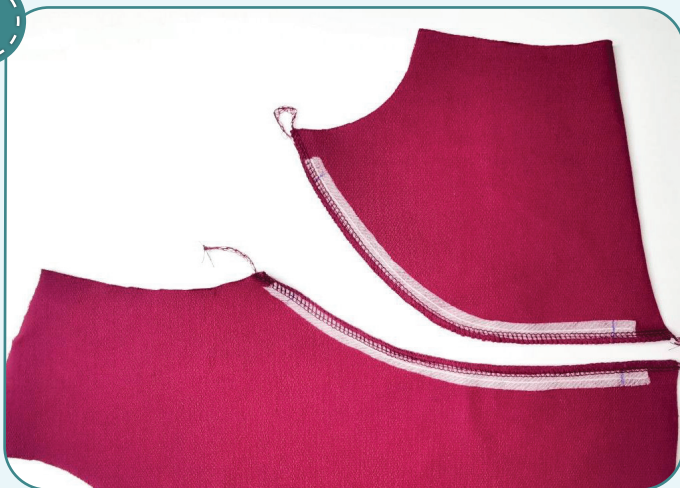
1



If you are not going to use the zippers for feeding a baby, skip steps 1-7. Fuse stabilizing tape to the center front and the side front princess lines along the places for attaching the zippers.



2



4 针

2,5-3

7

Finish the center front and the side front princess edges with a serger. Press them.

3



↺

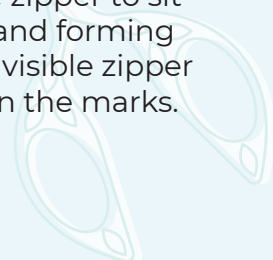
1

2

3

2-2,6

Place one opened invisible zipper tape to the center front princess line with right sides together. The slider of the closed zipper should be positioned at the bottom. Baste the zipper between the marks, aligning the edges. While basting, join the fabric gently for the zipper to sit accurately without waving and forming the folds. Stitch it with an invisible zipper presser foot exactly between the marks.



4



Transfer the marks from the piece on the attached zipper tape. Close the zipper and transfer the marks onto the other tape.

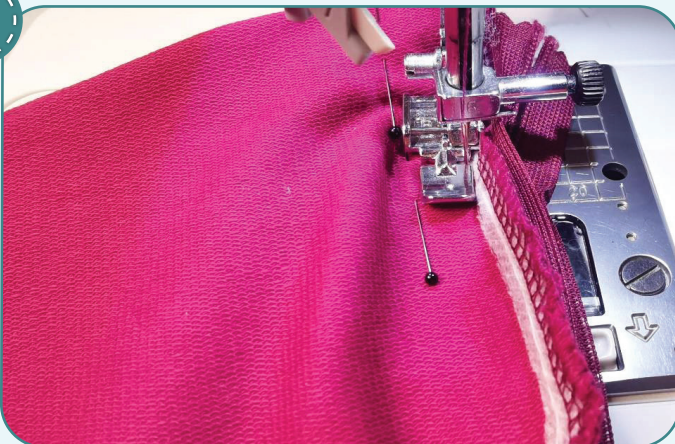
5



2-2,6

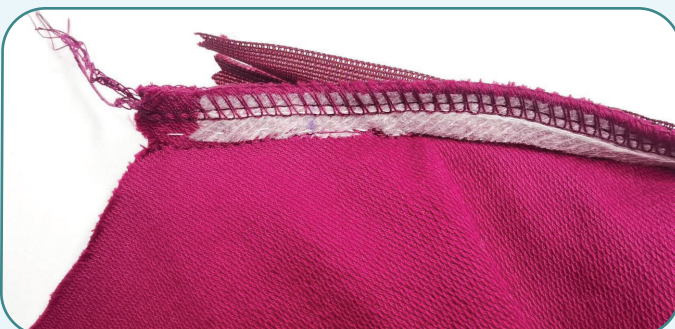
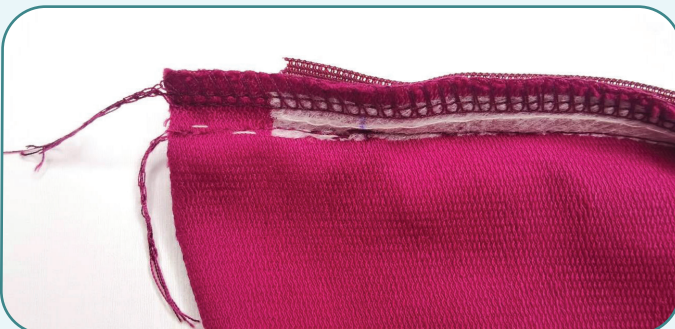
With right sides together, baste the other zipper tape to the side front, aligning the marks. Stitch the zipper using invisible zipper presser foot.

6



2-2,6

Hand-baste the princess seam above and below the zipper. Stitch it 12 mm (1/2") in from the edge with a unilateral zipper presser foot. Finish the seam exactly at the beginning of the zipper attaching seam.



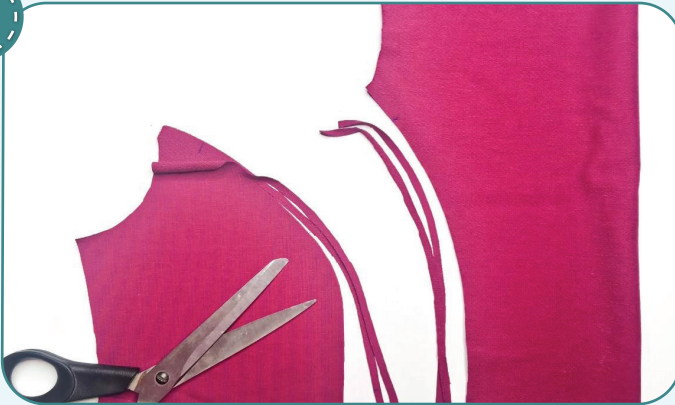


7



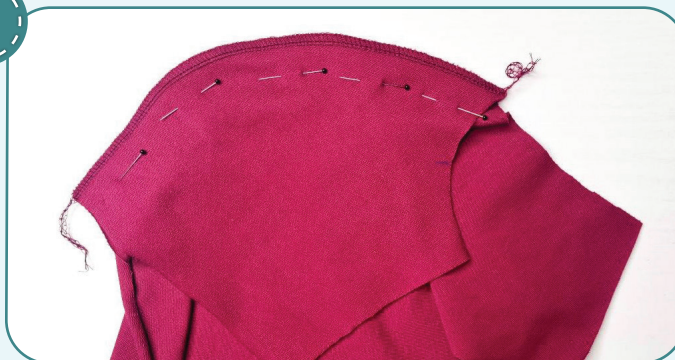
Press the seam allowances open. Repeat the process for the opposite zipper (steps 3-7). Then go to step 10.

8



If you are not going to use zippers for feeding a baby, then start with this step. Trim the center front and side front seam allowances at 4 mm (1/8").

9



4#



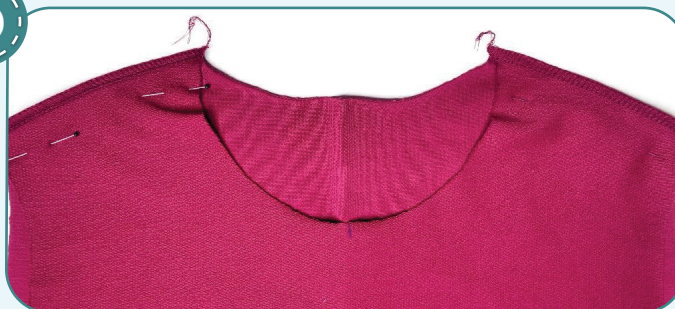
2,5-3



7

Pin the center front and the side front along the princess seam, aligning the marks. Serge the pieces. Repeat the process for the opposite side front. Press the seam allowances towards the front center.

10



4#



2,5-3



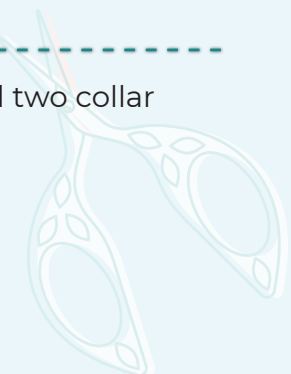
7

Pin the front and the back along the shoulder edges with right sides together. Serge the seams. Press the seam allowances flat towards the front.

11



Fuse both neck facings and two collar pieces.



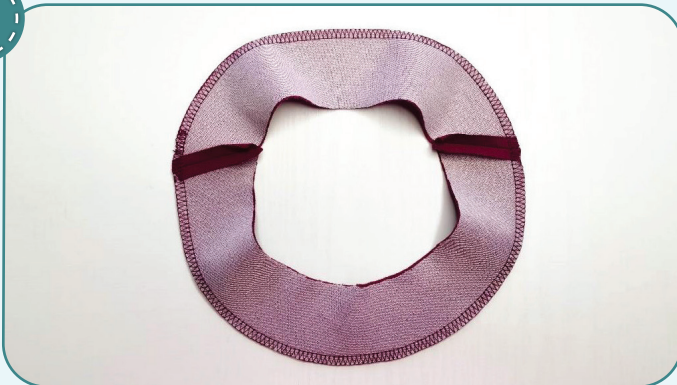
12



2,5-3

Pin the facings along the shoulder edges with right sides together. Stitch them 7 mm (1/4") in from the edge. Press the seam allowances open.

13



2,5-3



7

Finish the facings along the outer edge with a serger. Tie the thread tails at the end of the stitching. Press the seam.

14



2,4-2,8

Skip the steps 14-15, if you are sewing a dress without sewn-in collar. Place two collar pieces (one of them is fused with interfacing) with right sides together. Stitch the pieces along the outer edge with 7 mm (1/4") seam allowances, but do not stitch the neckline.

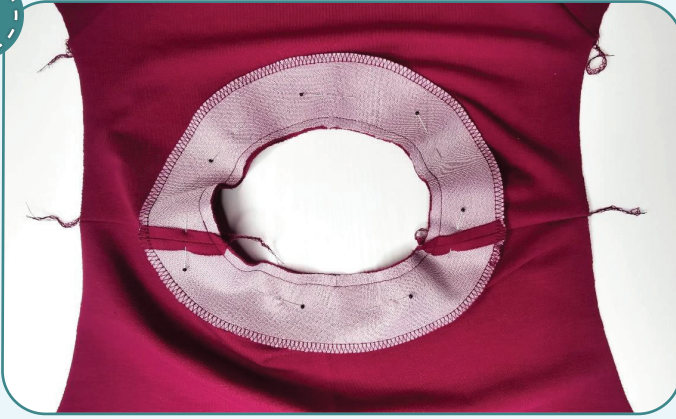
15



Trim the seam allowances at 3-4 mm (1/8") with pinking shears. You can use regular scissors to notch along the curved edges 1 mm (1/16") before the seam. Turn the collar out and press it forming a roll towards the lower (reinforced with interfacing) piece. Repeat the process for the other collar half (steps 14-15).



16



2,5-3

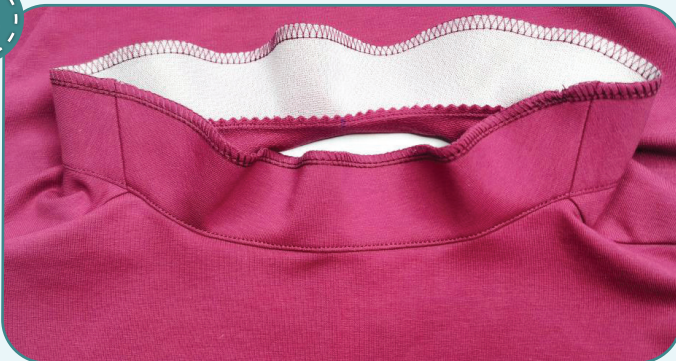
Baste or pin the facings to the bodice neckline, right sides together. If you are sewing a dress with sewn-in collar, sandwich the collar pieces between the facings and the bodice, placing the under collar to the bodice. Align the shoulder seams and the centers. Stitch the facings 7 mm (1/4") in from the edge.

17



Trim the seam allowances at 3-4 mm (1/8") with pinking shears. You can use regular scissors to notch along the curved edges 1 mm (1/16") before the seam.

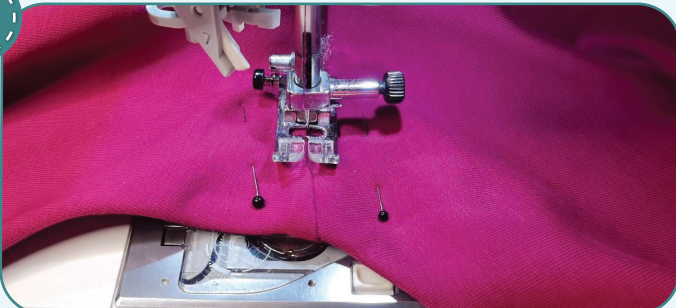
18



2,5-3

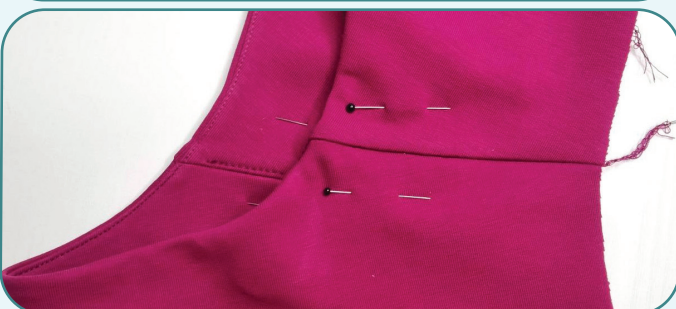
Press the seam allowance towards the facings. Topstitch the facing 1 mm (0,03") in from the seam. Press the facing towards the wrong side forming a roll.

19



2,4-2,8

Secure the facing along the shoulder edges. Stitch 25 mm (1") exactly atop the shoulder seam line from the right side.



20



2,5-3



7

Pin the back and the front along the side seam with right sides together. Serge the pieces. Press the side seam allowances towards the front. Repeat the process the opposite side seam.

21



2,5-3



7

With right sides together, pin the pocket lining to the skirt side edge along the pocket opening. Serge the pieces. Press the seam allowances towards the pocket opening. Repeat the process for the rest 3 pocket lining pieces.

22



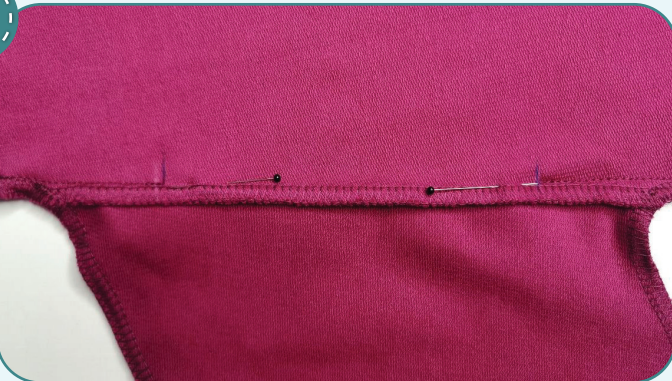
2,5-3



7

With right sides together, place the skirt panels along the side seams and the pocket linings. Evenly align the pocket lining attaching seams and pin or baste them. Serge the skirt panels and the pocket linings with one seam. It is more convenient to start stitching from the top. Repeat the process for the opposite side seam.

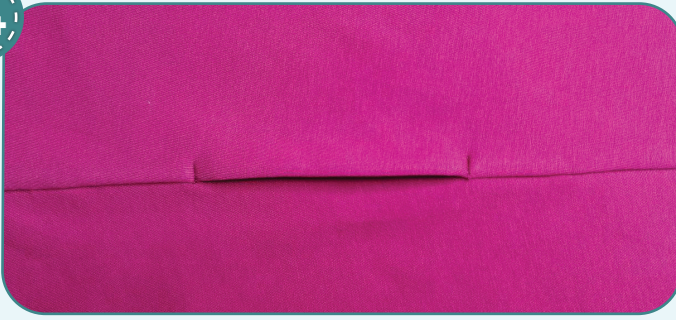
23



2,5-3

Evenly align the pocket lining attaching seams and pin or baste them. Stitch above and below the pocket opening 1 mm (1/16") away from the pocket lining attaching seams. The seam should start smoothly from the side seam and end at the pocket opening mark. Press the side seam and the pocket towards the front.

24



2,4-2,8

Bar tack across the side seam at the pocket opening ends. The seams length is 10 mm (3/8"). Repeat the process for the opposite pocket.

25



2,5-3



7

Pin the sleeve along the side seam with right side inside. Serge it. Press the seam allowances flat towards the front.

26



4-5

Stitch two parallel seams along the sleeve lower hem 4 and 6 mm (1/8 and 1/4") in from the edge. Set maximum stitch length (4-5 mm), do not secure the seam ends and leave the thread tails at least 50 mm (2").

27



2,5-3



7

With right sides together, fold the cuffs in half and pin along the short edges. Serge them.

28



To avoid bulk when stitching the cuffs, press the seam allowances in different directions.

29



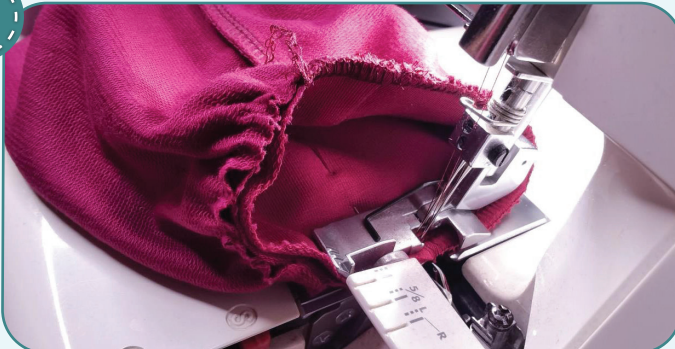
With wrong sides together, fold the cuffs in half, lengthways, and press them.

30



Pin the cuff to the sleeve lower hem with right sides together. Align the side seams and the pieces center marks. Pull up the needle thread tails and make the sleeve opening fit the cuff. Tie the thread tails at the ends of the seams. Evenly spread the gathers.

31



4

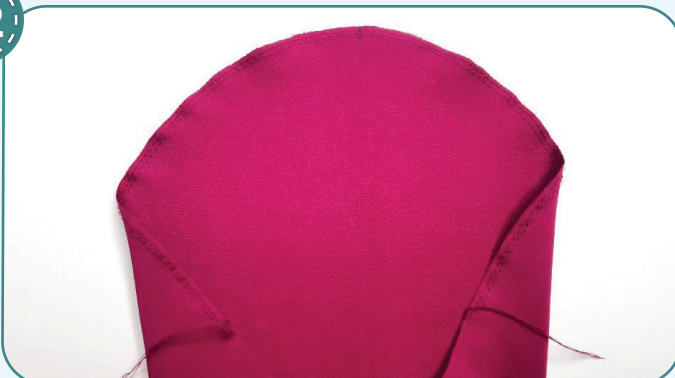
2,5-3

7

Serge the cuff to the sleeve. Press the seam allowance upwards. Repeat the process for the other sleeve and cuff (steps 25-31).



32



4

4-5

7

Stitch two parallel rows along the sleeve cap 4 and 6 mm (1/8 and 1/4") in from the edge. Set maximum stitch length (4-5 mm), do not secure the seam ends and leave thread tails at least 50 mm (2").



33



Pin the sleeve into the armhole with right sides together. Align the side seams and the check marks. Pull up the gathers to make the sleeve cap fit the armhole, using the thread tails of two rows along the sleeve cap. Tie the thread tails at the ends of the seams. Evenly spread the gathers along the sleeve cap. Pin or baste along the sleeve cap.

34



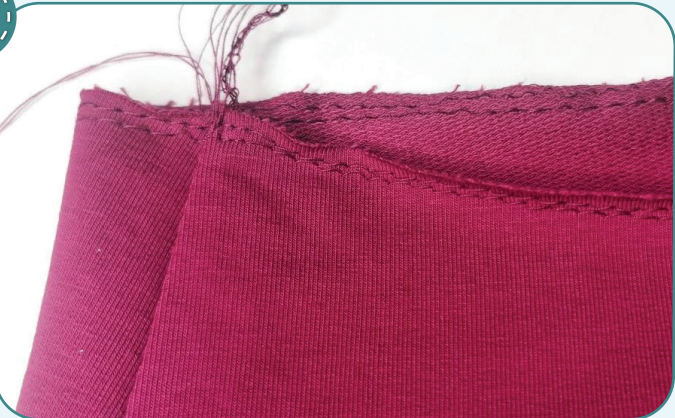
4

2,5-3

7

Serge the sleeve into the armhole all around the edge. Stitch from the sleeve side. Press the seam allowances on the edge. Repeat the process for the other sleeve (steps 32-34).

35



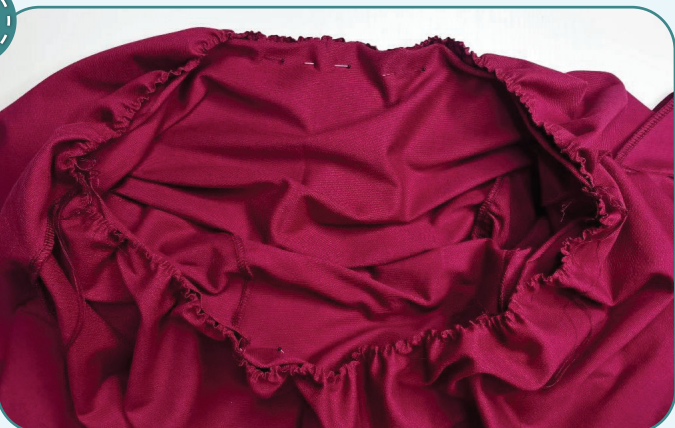
1

4-5

4-5

First stitch two parallel rows between two seams on one skirt panel 6 mm (1/4") and 4 mm (1/8") in from the edge, then repeat the process for the other skirt panel. Set maximum stitch length (4-5 mm), do not secure the seam ends and leave the thread tails at least 50 mm (2").

36



Pulling the tails of the upper threads, gather the skirt upper edge to the length indicated on the pattern. Tie the thread tails at the ends of the seams. Baste or pin the skirt to the bodice lower edge with right sides together. Align the side seams and the pieces center marks. Evenly spread the gathers.

37



4

2,5-3

7

Serge the skirt to the bodice. Press the seam allowances towards the bodice.

38



Draw a line along the garment hem 40 mm (1 9/16") in from the edge. Use the line to fold the hem at 20 mm (13/16"). Pin, baste or glue it with a glue-stick. Give the hem a final pressing.

39



2,5-3,5

2,5-3,5

2,5-3,5

Coverstitch the garment lower hem. Tie the thread tails on the wrong side and hide them into the seam. Press the seams.

40



Remove the basting stitches, trim the thread tails and press once again. The dress is ready!

Detachable collar construction



1



2,4-2,8

Fold the strips for tie strings lengthways, right side inside. Stitch them 3-4 mm (1/8") in from the edge and get the seam end come to the fold, overlapping one of the short edges.

2



Turn the strips through with a loop turner or a needle with a thread. Tie the thread tail at the end of the stitching and first pass the needle eye through the tube, then begin pulling the thread, carefully turning the entire tube right side out. Press the tie strings.

3



2,4-2,8

Place two collar pieces (one of them is fused with interfacing) with right sides together. Stitch both pieces together along the neckline from the sharper collar corner to the nearest mark 7 mm (1/4") away from the edge.

4



Sandwich the tie string raw edge between the upper and lower collars, as close to the stitching as possible. Pin it. Sandwich the tie string between the upper and lower collars.

5



2,4-2,8

Stitch the collar pieces all way around the outside 7 mm (1/4") in from the edge. Be sure to leave an opening for turning it out. Care the tie string does not get into the seam.

DETACHABLE COLLAR CONSTRUCTION

6



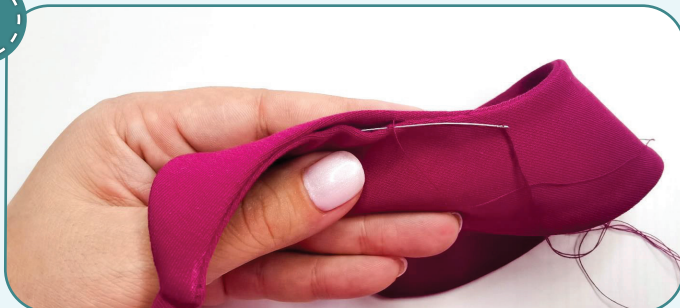
Trim the corners but avoid cutting the stitching. Trim the seam allowances at 3-4 mm (1/8") with pinking shears. You can use regular scissors to notch along the curved edges 1 mm (1/16") before the seam.

7



Turn the collar out and press it forming a roll towards the lower (reinforced with interfacing) piece.

8



Hand-baste the opening with a blind stitch. Repeat the process for the other collar half (steps 3-8).

9



Hand-baste the collar halves together with a blind stitch. The detachable collar is ready!

ELINA PATYKOVA

ПРО ШИТЬЕ

Dress Emerald (for women)

Thank you for joining my team and me!
Share your works in instagram and my group in vkontakte. Hope you will stay with us for our next project!

