

SIDE STRIPE JUMPSUIT WITH WC SECRET FOR CHILDREN

SKILL LEVEL



INSTRUCTIONS FOR SEWING

ELINA PATYKOVA

ПРО ШИТЬЕ



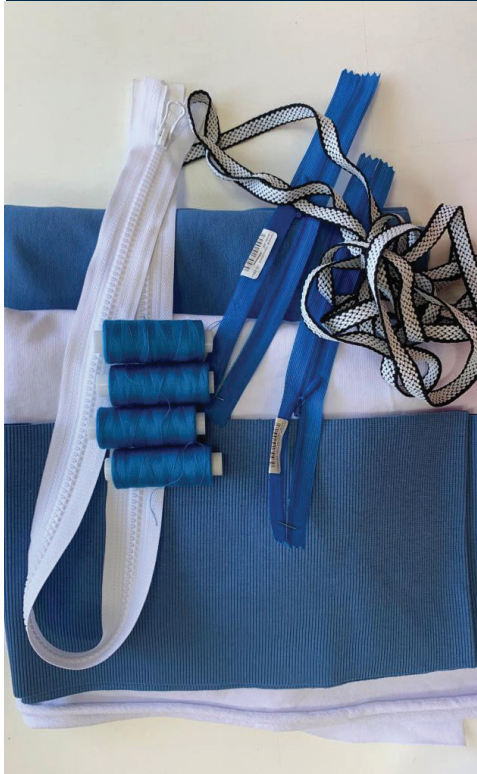
ELINA_PATYKOVA



ELINA-PATYKOVA.RU



VK.COM/ELINA_PATYKOVA



FOR TAILORING YOU WILL NEED:

- cotton lycra french terry,
- rib knit fabric or ribbing,
- grommets 2 - 4 pcs.,
- flat draw cord,
- front zipper - 1 pc.,
- invisible zipper 30 - 40 cm (1 3/16 - 1 9/16") long - 2 pcs.,
- fusible interfacing,
- elastic 2 cm (13/16") wide,
- cord stops (for 122 - 170 sizes),
- aglets (optional),
- matching thread,
- Jersey 75 - 80 or Stretch 75 - 80 needles

A

Before beginning your sewing project, wash the fabric in warm water, dry and iron it.

B

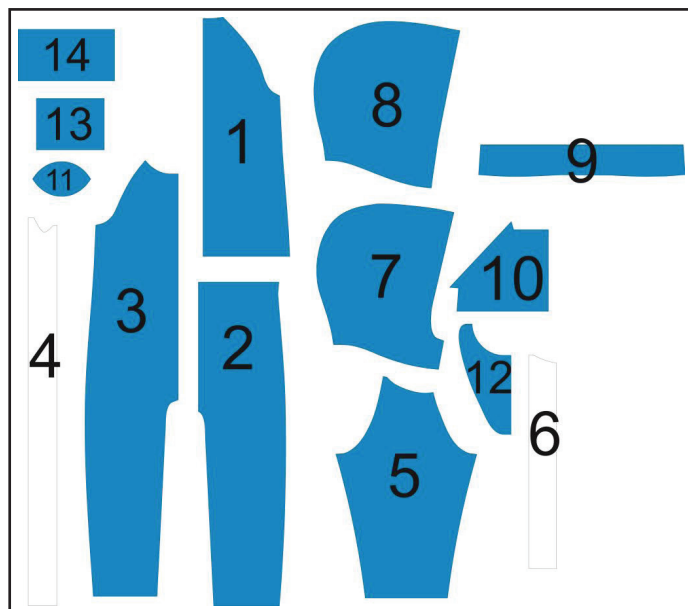
Let us start the cutting. Print and glue the paper patterns. When printing, do not forget to check the size of the test square.

C

Lay the paper pattern pieces onto the fabric. It is important to check that the grain is straight. Pin the paper pattern pieces to the fabric gently and cut the fabric along the outline. Note: seam allowance is already included. Transfer all the marks from the pattern onto the wrong side of your fabric.

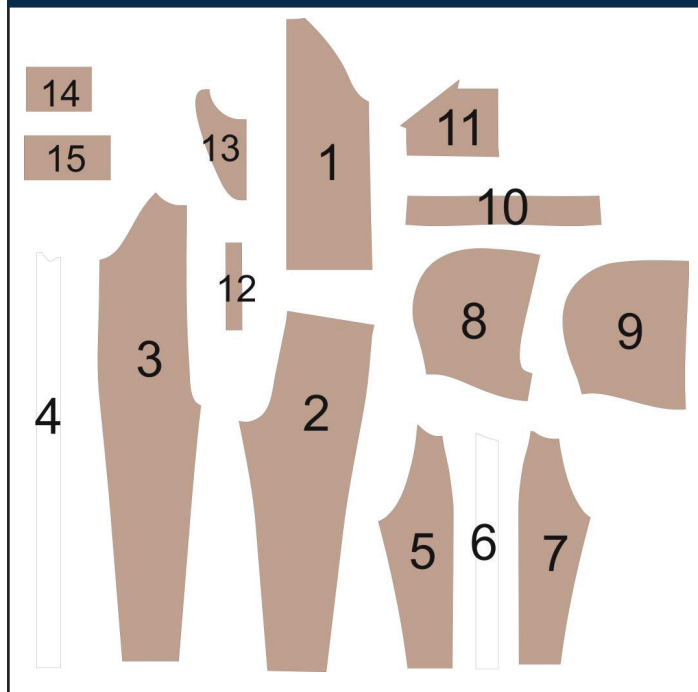
NOW YOU HAVE ALL THE PIECES:

JUMPSUIT PIECES 68 - 116:



- 1 Upper back - cut 1 on the fold
- 2 Lower back - cut 1 on the fold
- 3 Front - cut 2
- 4 Side stripe - cut 2 (optional)
- 5 Sleeve - cut 2
- 6 Sleeve side stripe - cut 2 (optional)
- 7 Hood with stand - 4 pieces (do not cut pieces 8 and 9)
- 8 Hood without stand - 4 pieces (do not cut pieces 7 and 9)
- 9 Stand collar - cut 2 (do not cut pieces 7 and 8)
- 10 Pocket - cut 2
- 11 Crotch gusset - cut 1
- 12 Front facing - cut 2
- 13 Sleeve cuff - cut 2
- 14 Pant cuff - cut 2

JUMPSUIT PIECES 122 - 170:



- 1 Upper back - cut 1 on the fold
- 2 Lower back - cut 2
- 3 Front - cut 2
- 4 Side stripe - cut 2
- 5 Sleeve back - cut 2
- 6 Sleeve side stripe - cut 2
- 7 Sleeve front - cut 2
- 8 Hood with stand - 4 pieces (do not cut pieces 9 and 10)
- 9 Hood without stand - 4 pieces (do not cut pieces 8 and 10)
- 10 Stand collar - 2 pieces (do not cut pieces 8 and 9)
- 11 Pocket - cut 2
- 12 Casing - cut 2
- 13 Front facing - cut 2
- 14 Sleeve cuff - cut 2
- 15 Pant cuff - cut 2

CONSTRUCTION

SYMBOLS:



straight stitch



the stitch length in (mm)



flat lock stitch



zigzag stitch



the stitch width in (mm)



3-Step Zigzag Seam Finishing



unilateral zipper presser foot



universal presser foot



invisible zipper presser foot



pinning

You should lockstitch the seam and trim the thread tails or tie the seam thread tails and hide them into the seam after sewing a serger stitch or cover seaming chain stitch.



3-thread serger stitch



4-thread serger stitch

NOTE:

A

4-thread serger stitch

If you do not have a serger, you can use stretch stitches available on your sewing machine, or at least, a zigzag stitch.

B

3-thread serger stitch

If you do not have a serger, you can replace it with an overedge stitch, or a zigzag stitch.

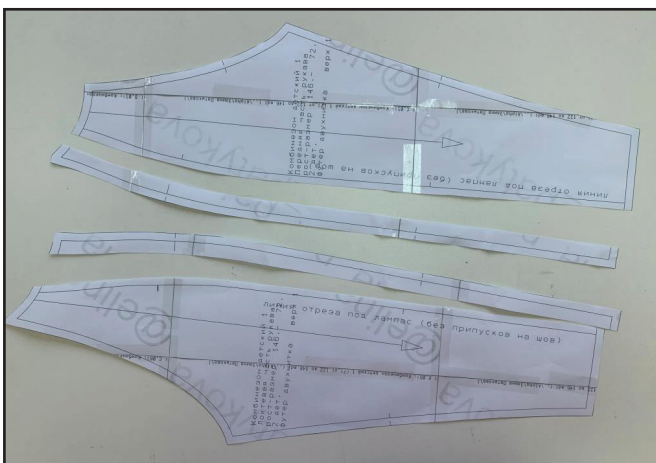
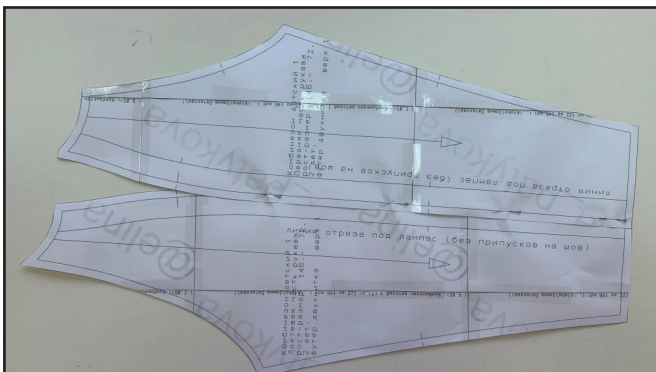
C

flat lock stitch

If you do not have a coverstitch machine, the flat seam can be performed with a) a twin needle on a sewing machine, b) decorative stretch seam on a sewing machine, c) finish the seams with serger and stitch them with a straight stitch.

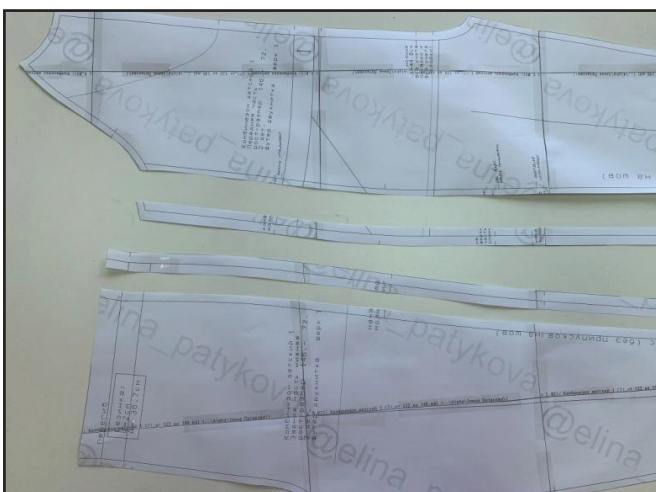
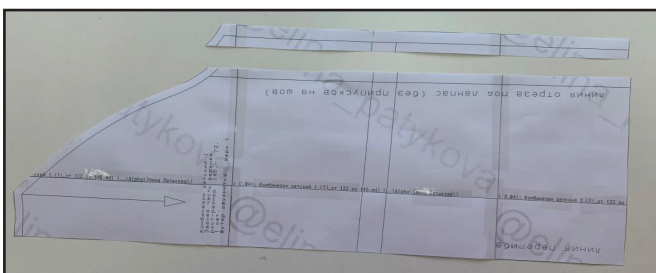
CONSTRUCTION

1



If you are sewing a side-stripe jumpsuit, cut the sleeve pattern(s) along the marking line, having added 7 mm (1/4") seam allowances.

2



If you are sewing a side-stripe jumpsuit, cut the front piece patterns and the upper and lower back patterns along the marking line, having added seam allowances:

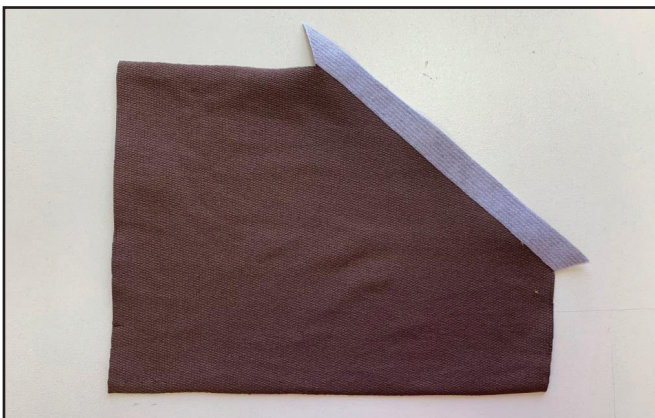
- 1 cm (13/16") to the back paper patterns
- 7 mm (1/4") to the front paper pattern

3



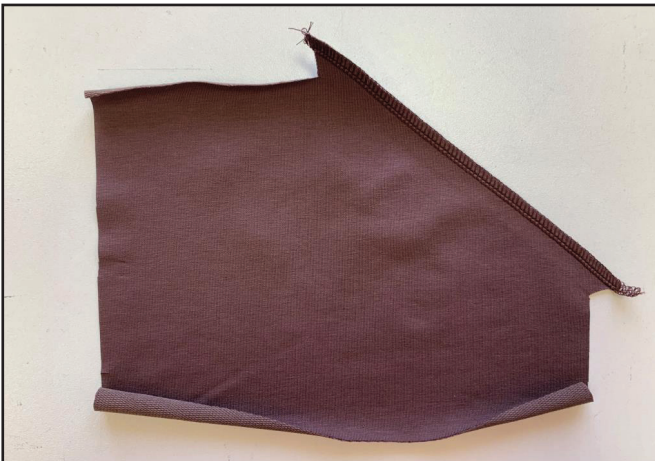
Fuse a strip of interfacing 12 - 15 mm (1/2 - 9/16") wide to the front piece center edges between the neckline and the zipper mark + 1 cm (3/8"). If you have a narrower kantenband, fuse it 3 - 5 mm away from the edge. Fuse the pieces of interfacing about 2x2 cm (13/16x13/16") atop the marking for grommets. (There are no grommets on front pieces for 68 - 116 sizes.)

4



Fuse the strips of interfacing 2 cm (13/16") wide to the pocket opening seam allowances.

5



4 2,5-3 7

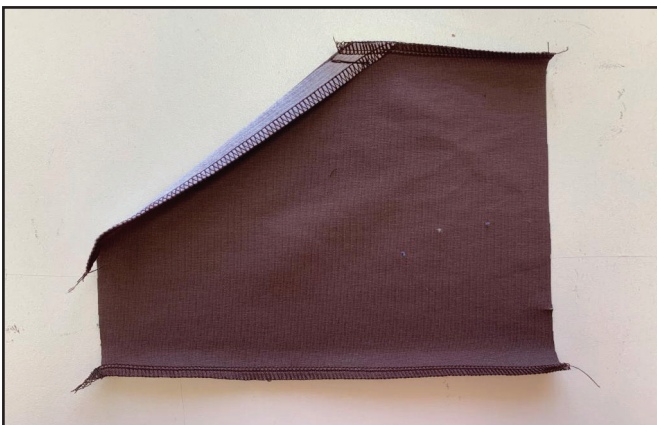
Finish the pocket opening edges with a serger.

6



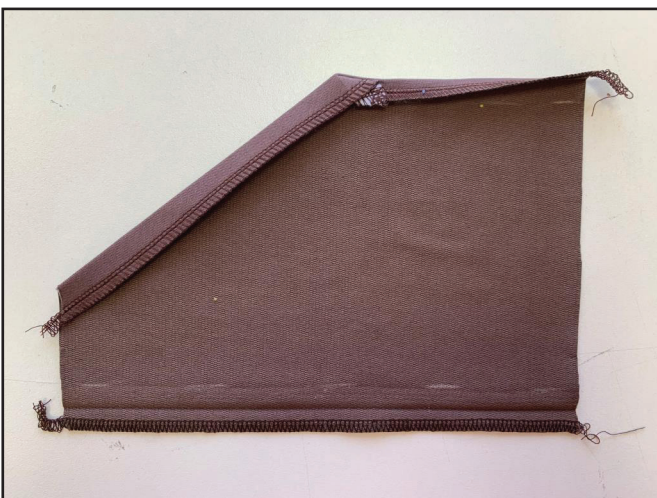
Fold 2 cm (13/16") of the pocket openings seam allowances to the right side and topstitch along the pocket top edges 1cm (3/8") in from the edge.

7



Finish the pocket top and bottom edges with a serger.

8



Turn the pocket out and press the pocket opening and also press 1 cm (3/8") of the seam allowances along the pocket top and bottom edges to the wrong side.

9



Topstitch the pocket opening seam allowances 15 mm (9/16") away from the fold.

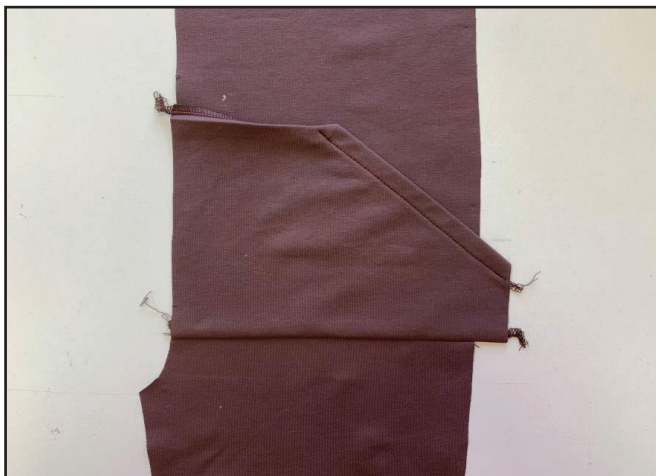
10



Place the pocket bottom fold to the marks for the pocket bottom on the front piece and pin it. Topstitch the pocket on the front piece exactly atop the fold line. If you are sewing a side-stripe jumpsuit, the pocket will be a little wider than the front piece.



11



3-3,5

Turn the pocket in place and press it. Pin the pocket top edge to the front piece. Topstitch the pocket along the top and bottom sides 1 - 2 mm (1/16") away from the edge.



12



If you are sewing a side stripe jumpsuit, trim the excess fabric on the pocket to align the edges.

13



4

2,5-3

7

Finish the front center edges with a serger. The pocket side edges should be finished together with the front piece center edges. Press the seams.

14



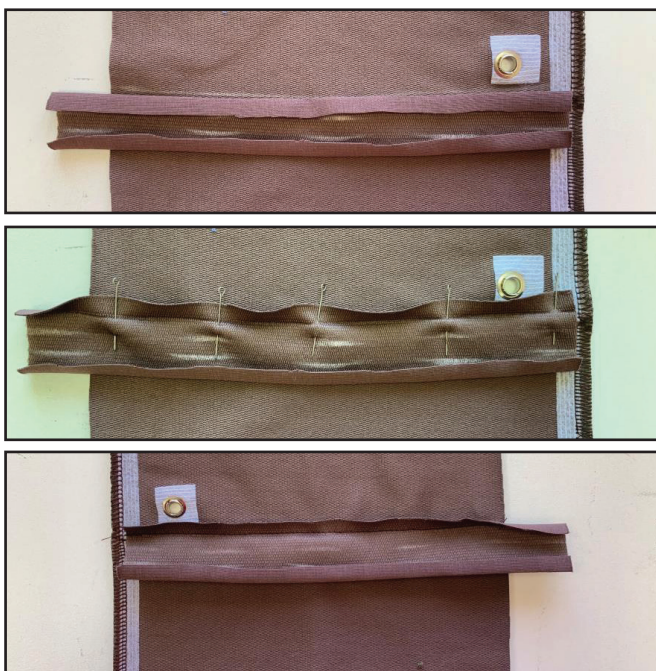
If you are sewing a jumpsuit of 68 - 116 sizes, skip this and the following steps and go straight to step 20. Punch the holes and attach the grommets.

15



Press 1 cm (3/8") of the seam allowances along the casing long edges towards the wrong side.

16



4

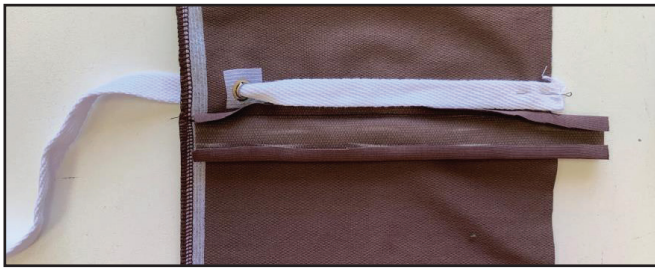
2,5-3

7

3-3,5

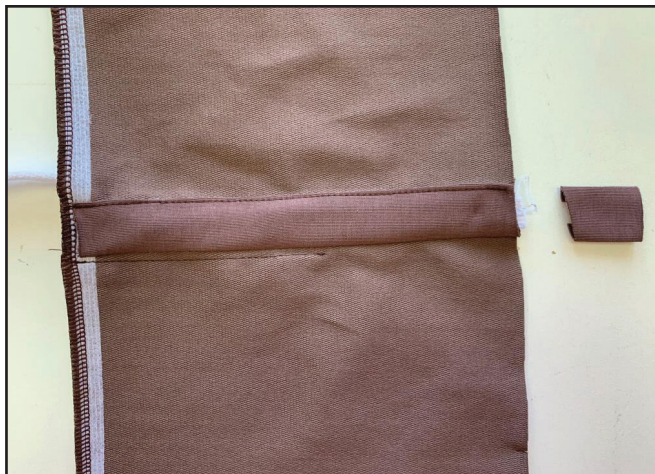
Place one casing long edge fold to the lower mark for casing on the front and pin them. Stitch them exactly atop the fold.

17



Insert the flat draw cord into the grommets and pin its one end to the front piece side edge. Cover it with casing and pin along the upper edge. Topstitch the casing 1 - 2 mm (1/16") away from the upper edge.

18



If you are sewing a side-stripe jumpsuit, cut the excess fabric of the casing.

19



Stitch the flat draw cord end along the front piece side edge 4 - 5 mm (1/8 - 3/16) in from the edge.

20



4  2,5-3  7 

Place the side stripes to the fronts, right sides together, and pin them aligning the marks. Serge them. The pocket side edges should be serged together with the front piece side edges. Press the seam allowances towards the side stripes.



21



Fuse a strip of interfacing 12 - 15 mm (1/2 - 9/16") wide to the side stripes between the marks for the zippers + 1cm (3/8") from each side. If you have a narrower kantenband, fuse it 3 - 5 mm away from the edge.

22



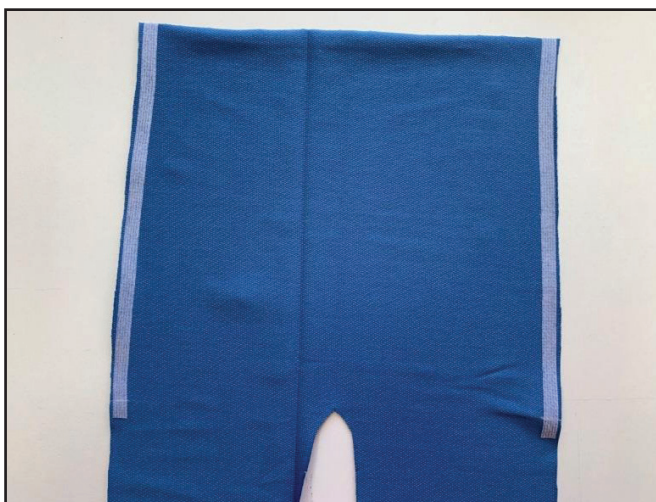
4  2,5-3  7 

Finish the side stripe long raw edges.

23



Fuse a strip of interfacing 12 - 15 mm (1/2 - 9/16") wide to the lower back piece side edges between the upper edge and the zipper mark + 1 cm (3/8"). If you have a narrower kantenband, fuse it 3 - 5 mm away from the edge.

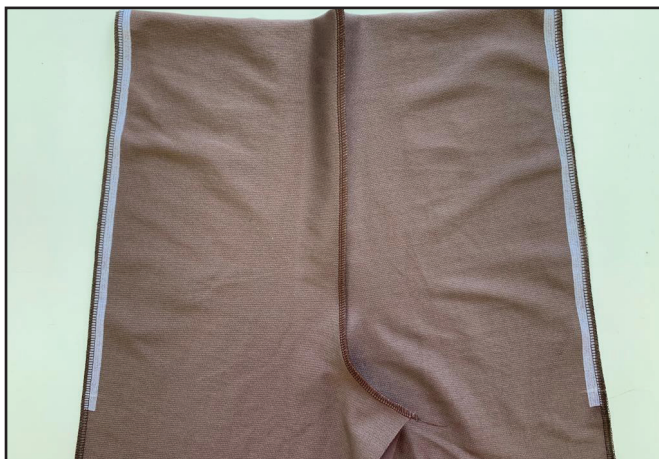


24



Finish the lower back pieces side edges with a serger. Press the seams.

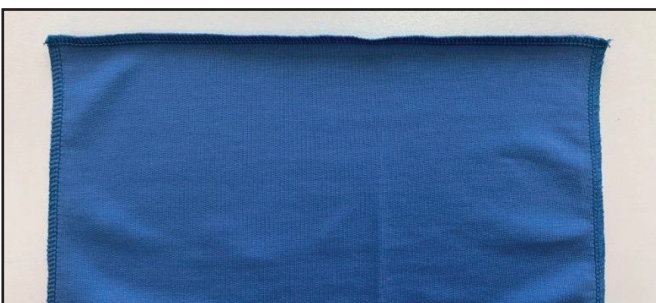
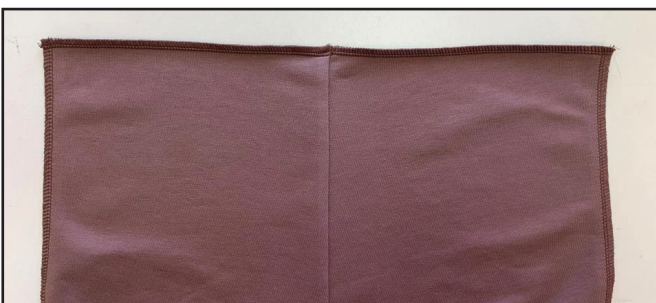
25



4  2,5-3  7

If you are sewing a jumpsuit of 68 - 116 sizes, skip this step and go straight to the next step. Place the lower back pieces, right side inside, and serge the crotch seam. Press the seam allowances towards any piece.

26



4  2,5-3  7

Finish the lower back upper edge with a serger.

27



Press 2,5 cm (1") of the lower back piece upper seam allowances towards the wrong side.

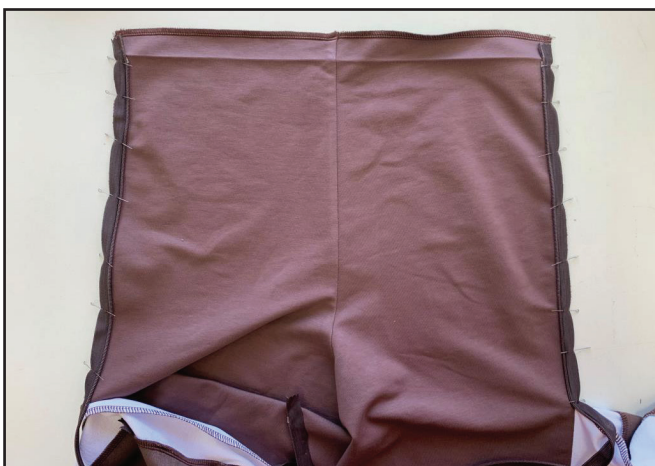
28



Place the fronts and the lower backs, right sides together, and pin them together between the zipper bottom mark and the pant lower edges. Stitch them 1 cm (3/8") in from the edge. Press the seam allowances open.



29



Pin one zipper tape to the lower back. The zipper top stop matches with the fold.

30



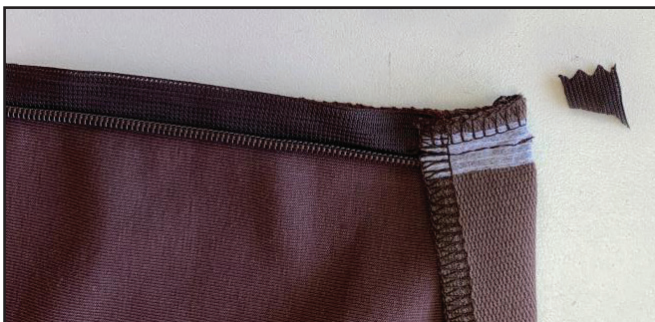
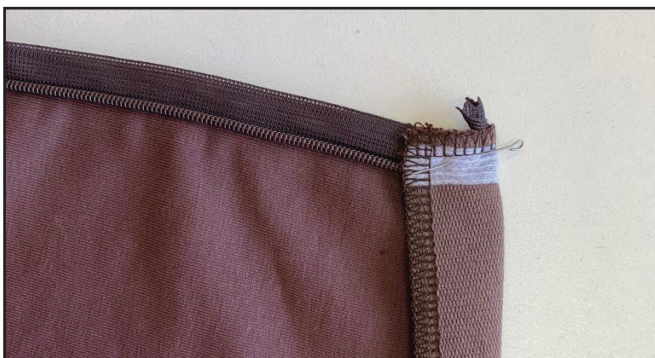
Stitch the zipper in.

31



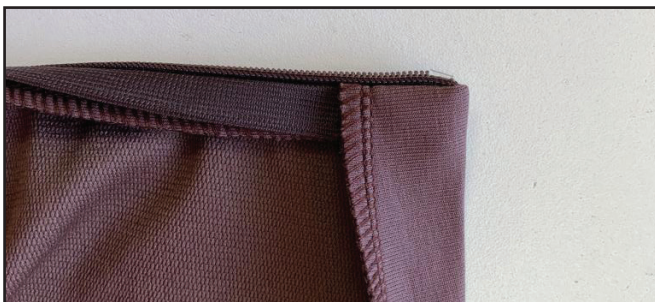
Fasten the zipper and transfer the marks for the seam beginning and end to the other zipper tape.

32



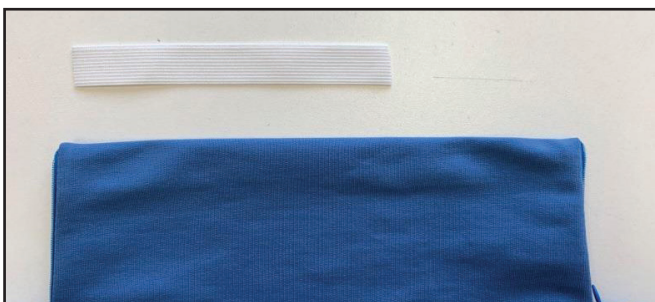
Turn the zipper top extension to the wrong side and pin it. Turn 2,5 cm (1") of the lower back piece upper edge onto the zipper and pin them. Stitch them 1 - 2 mm (1/16") away from the previous seam. Trim the zipper top extension.

33



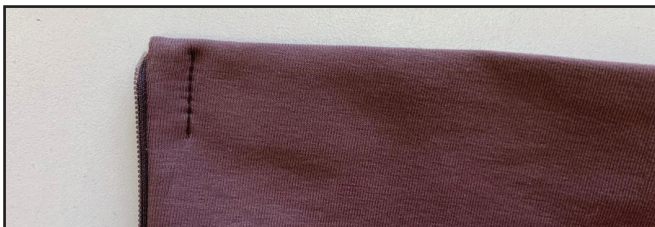
Turn out the seam allowances on the lower back piece upper edge to the right side and press it.

34



The length of the elastic is equal to 0.5-0.75 (3/16 - 5/16") length of the lower back piece upper edge.

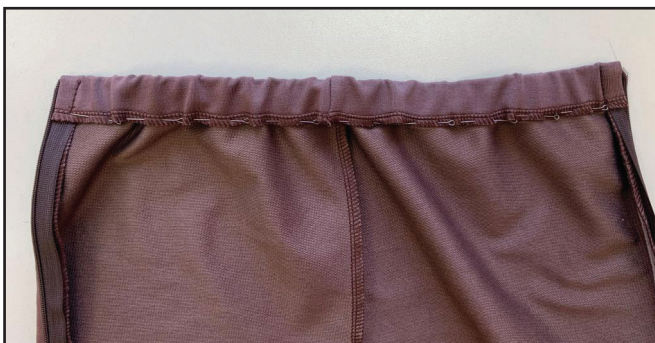
35



2,5-3

Pin the elastic ends to the zipper attaching seam allowances and stitch them up.

36



3-3,5

Pin the seam allowances to the lower back and stitch 2.2 cm (7/8") away from the fold. Be careful not to get the elastic into the stitching.

37



2,5-3

Pin the zipper other tape to the side stripes aligning the marks. Stitch them. Fasten the zipper and press it out neatly on the right side.

38



Trim the zipper bottom leaving 2 - 3 cm (13/16 - 1 3/16").

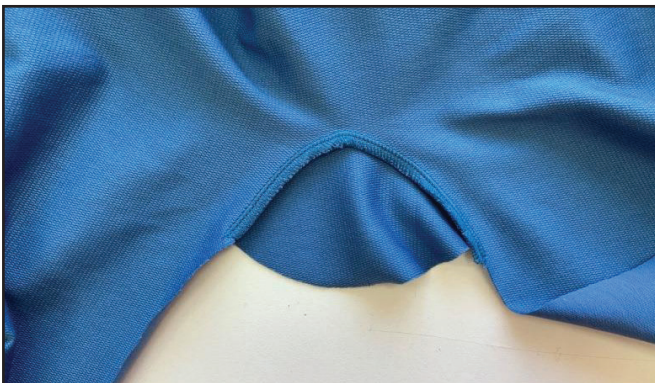
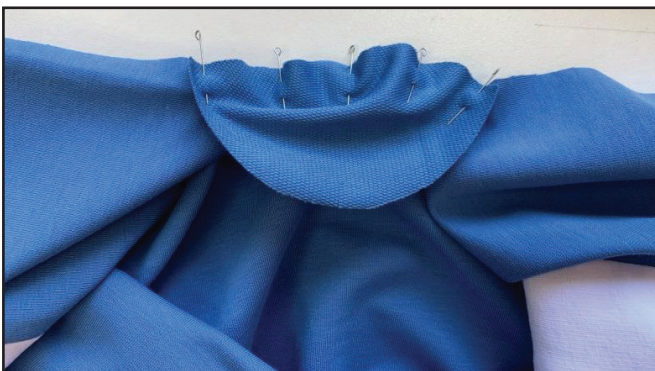
39



2,5-3

Place the front pieces, right sides together, and pin between the mark for zipper and the inseam edge. Stitch them 1 cm (3/8") in from the edge. Press the seam allowances open.

40



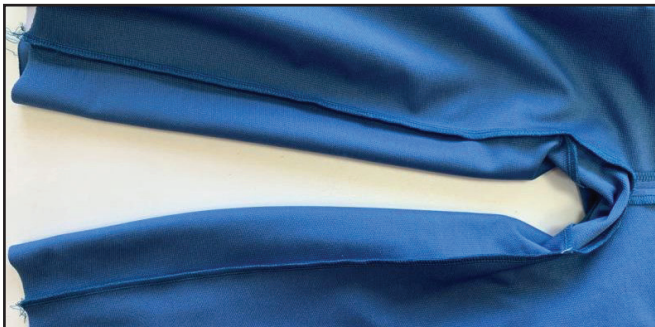
2,5-3



7

If you are sewing a jumpsuit of 122 - 170 sizes, go straight to the next step. To sew the jumpsuit of 68 - 116 sizes place the crotch gusset to the front, right sides together, and pin them aligning the marks. Serge the pieces. Press the seam allowances towards the crotch gusset.

41



4

2,5-3

7

Place the front and the lower back, right sides together, and pin the inseam aligning the marks. Serge them. Press the seam allowances towards the back.

42



Finish the upper back lower and side edges.

43



4

2,5-3

7

3-3,5

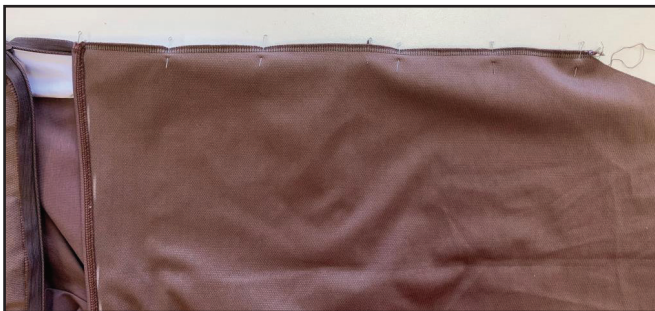
Hem the upper back 15 mm (9/16") for sizes 68 – 16 and 7 – 10 mm (1/4 – 3/8") for sizes 122 – 170 with a straight stitch. Press the seam.

44



Turn the zipper tops on the side stripes towards the seam allowances and pin them.

45



Pin the side stripes (the front - for jumpsuits without side stripes) to the upper back, right sides together, to sandwich the zipper between them. Stitch them together 1 cm (3/8") in from the edge. Stitch 1 - 2 mm (1/16") away from the zipper attaching seam. Press the seam allowances towards the side stripes.

46



If you are sewing side stripe sleeves, place the sleeve front, sleeve sidestripe and the sleeve back, right sides together, and pin them aligning the marks. Serge them. Press the seam allowances towards the side stripes.

If you are sewing a jumpsuit without side stripes, pin and stitch the dart. Press the seam allowances of the dart towards the sleeve back.

47



4 2,5-3 7

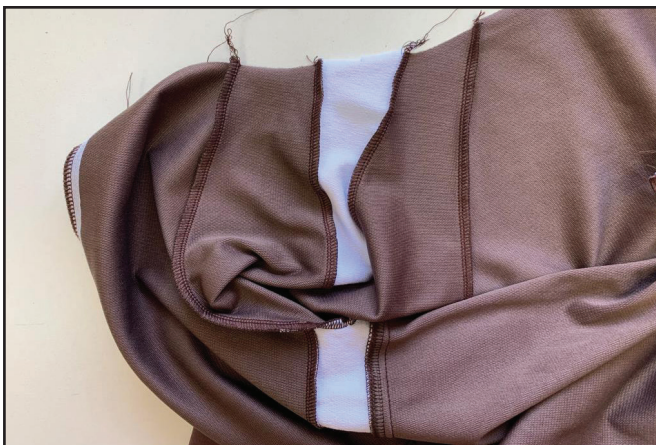
Place each sleeve in half, right side inside, and pin along the side edges. Serge them. Press the seam allowances towards the sleeve fronts.

48



4 2,5-3 7

Turn the sleeves out to the right side and pin them to the garment aligning the marks. Serge them. Press the seam allowances towards the garment.



49



If you are sewing a hoodie jumpsuit, skip this and the following steps and go straight to step 53. If you are sewing a jumpsuit with stand collar, fuse a strip of interfacing 12 - 15 mm (1/2 - 9/16") wide to the one stand collar piece short edges and this will be upper collar. If you have a narrower kantenband, fuse it 3 - 5 mm away from the edge.

50



Place both collar pieces, right side inside, and pin them along the upper edge. Stitch them 7 mm (1/4") away from the edge.

51



Topstitch the seam allowances towards the lower collar 1 -2 mm (1/16") away from the previous seam.

52



Place the collars, wrong side inside, and press the upper edge forming a roll 1 mm (1/16") towards the lower collar.

53



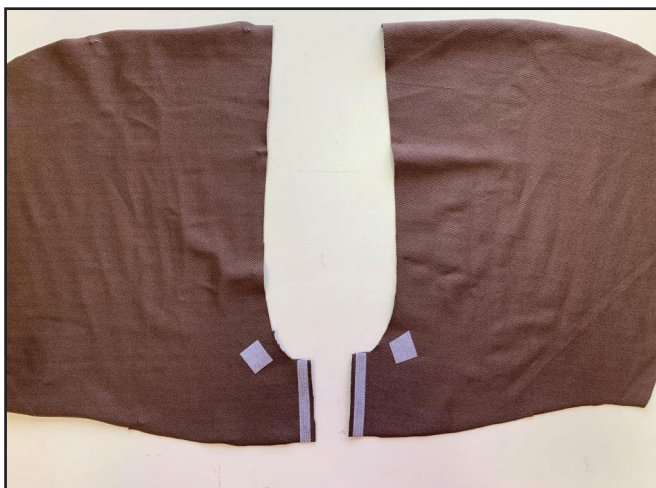
Fuse interfacing to both front facing pieces.

54

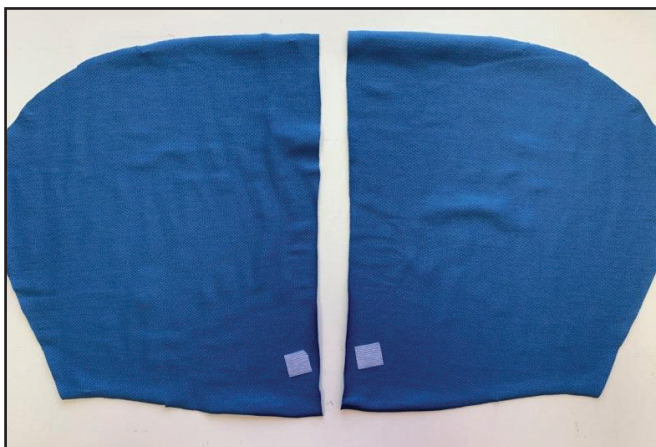


Finish front facing outer edges with a serger.

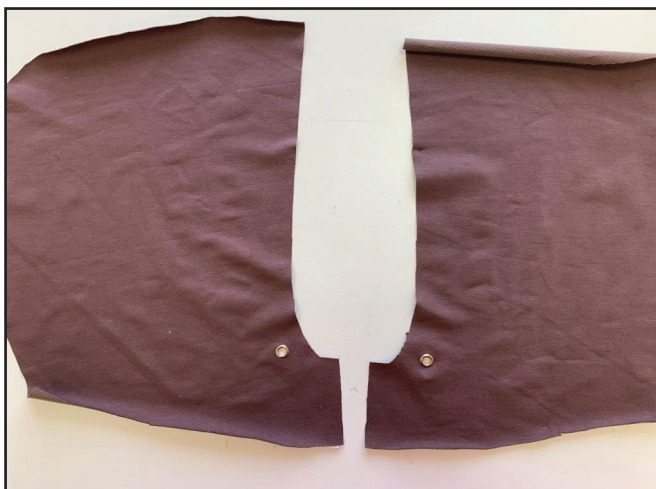
55



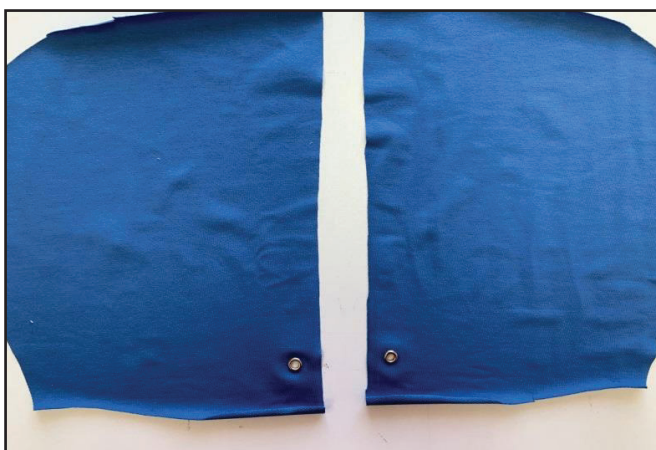
Fuse a strip of interfacing 12 - 15 mm (1/2 - 9/16") wide to the hood pieces center edges. If you have a narrower kantenband, press it 3 - 5 mm (1/8 - 3/16") away from the edge. Fuse pieces of kantenband (2x2 cm or 3/4x3/4") on the marks for the grommets. Fuse interfacing only to places for grommets on the hood without stand.



56



Punch the holes and attach the grommets.



57



Place the hood pieces, right sides together, and stitch the curved seam 7 mm (1/4") in from the edge. Press the seam allowances open.



58



Place the hood lining pieces, right sides together, and stitch the curved seam 7 mm (1/4») in from the edge. Press the seam allowances open.



59



Place the hood and the hood lining, right sides together, and pin the outer edges aligning the marks. Stitch them 7 mm (1/4") away from the edge.

60



Topstitch the seam allowances towards the lining 1 - 2 mm (1/16") away from the previous seam.

61



Place the hood pieces, wrong side inside, and press the outer seam forming a roll 1 mm (1/16") towards the lining.

62



To make a hoodie jumpsuit without stand, skip this and the following steps and go straight to step 73. To make a hoodie jumpsuit with stand (with collar), place the front facings to the hood lining lower edge (lower collar), right sides together, and pin them. Stitch them 7 cm (1/4") in from the edge. Press the seam allowances towards the hood.

63



Place the hood (collar) and the garment neckline, right sides together, and pin them aligning the marks. Stitch them 7 cm (1/4") in from the edge. Press the seam allowances towards the hood (collar).

64



Pin one zipper tape and the front right piece center edge, right sides together, between the hood outer edge (collar upper edge) and the mark for the zipper. Turn the top zipper extension to the wrong side. Place the hood center edges (collars), right sides together, and pin them to sandwich the zipper between them. Turn the hood lining lower edge (lower collar) seam allowances towards the wrong side.

65



Stitch the zipper in, close to its teeth.

66



Fasten the zipper and transfer onto the other zipper tape the following marks: for the hood (collar) attaching seam, pocket top edge, casing upper and lower edges, and the lower end of the seam.

67



Pin and stitch the other zipper tape and the front left piece aligning the marks.

68



Insert the flat draw cord into the grommets on the hood, place it to the hood outer edge seam as close as possible, and pin the hood and the hood lining together. Stitch the hood and the hood lining together 2.5 - 3 cm (1 - 1 3/16") away from the outer edge.



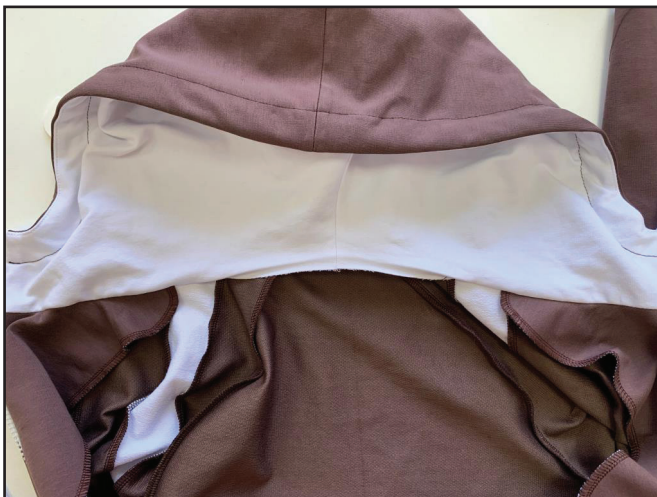
69



Place the hood and the hood lining (both collars) and pin them along the lower edges, Stitch them as far as possible 7 mm (1/4") away from the edge.

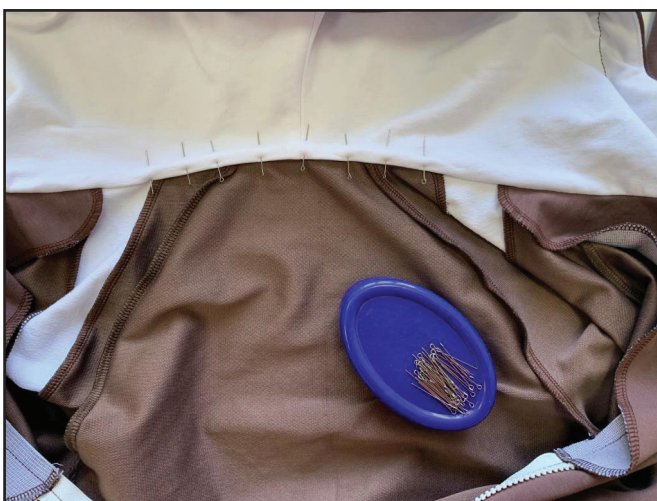


70

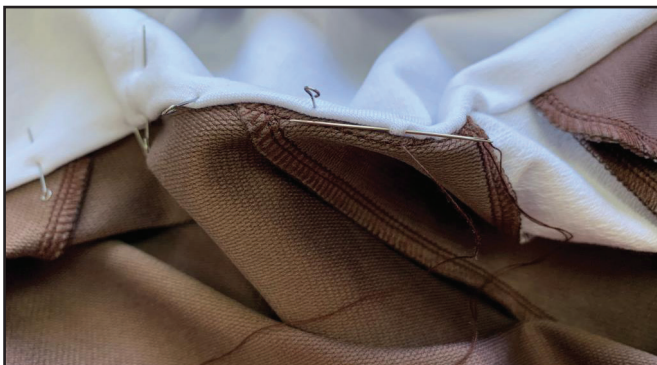


Turn the hood (collar) out.

71



Turn 7 mm (1/4") of the hood (collar) lower edge seam allowances to the wrong side, pin it to the garment, overlapping the hood (collar) attaching seam. Hand-baste the hood lining lower edge.

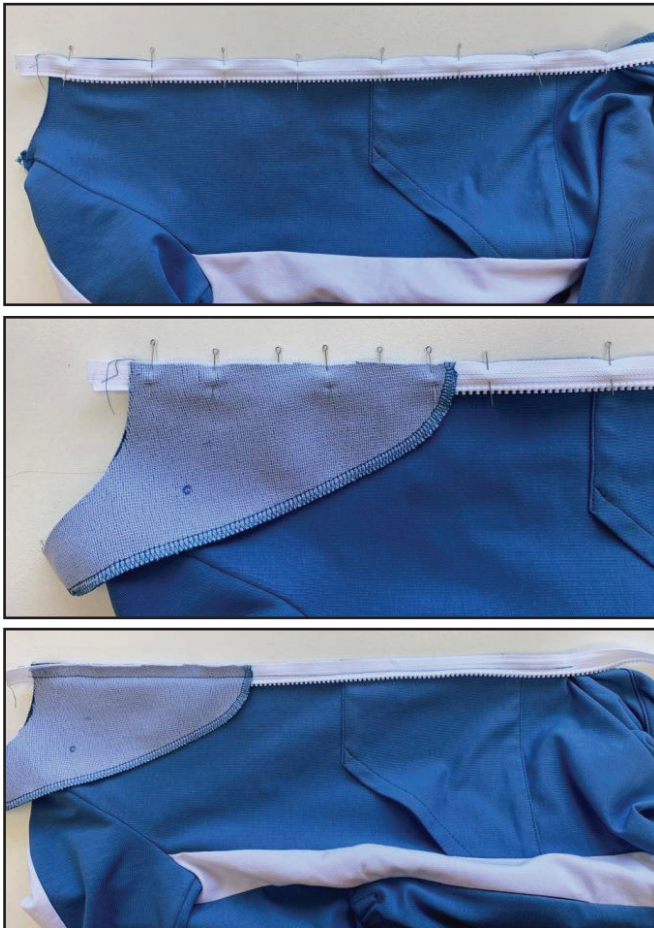


72



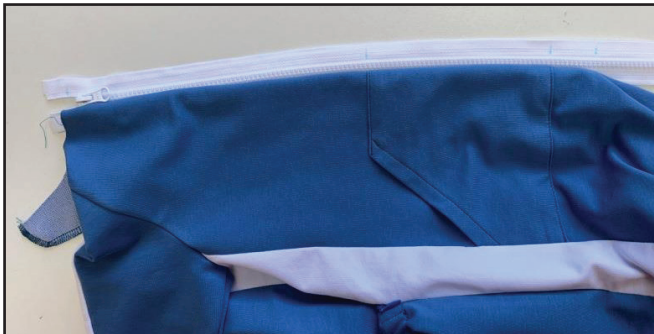
Topstitch the garment along the zipper.

73



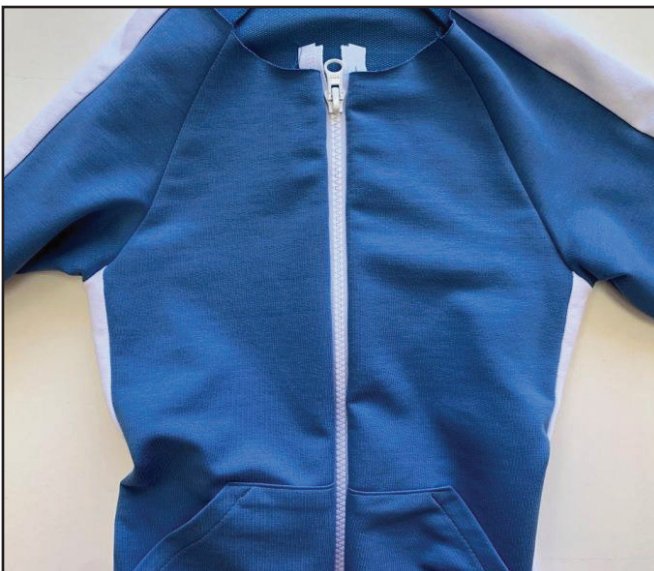
To make a hoodie jumpsuit with stand (collar), skip this and the following steps and go straight to step 84. To make a hood without stand, pin one zipper tape, right side to the front right piece center edge, between the neckline and the zipper mark. Place the front facing and the front piece center edges to sandwich the zipper between them. Stitch the zipper in, close to its teeth.

74



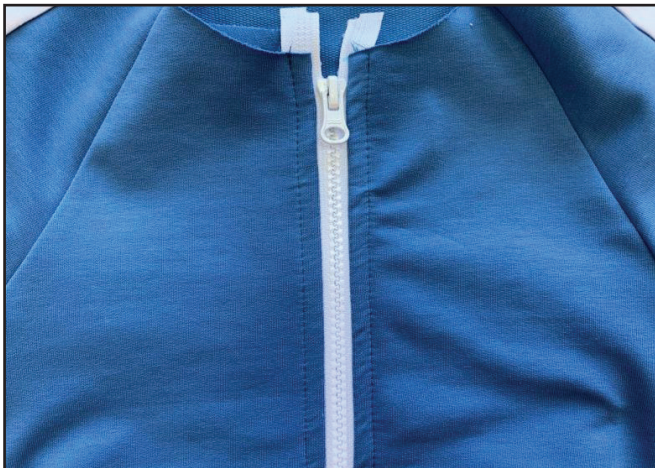
Fasten the zipper and transfer onto the other zipper tape the following marks: the pocket top edge, casing upper and lower edges, and the lower end of the seam.

75



Pin and stitch the other zipper tape and the front left piece aligning the marks.

76



3-3,5

Topstitch the garment along the zipper.

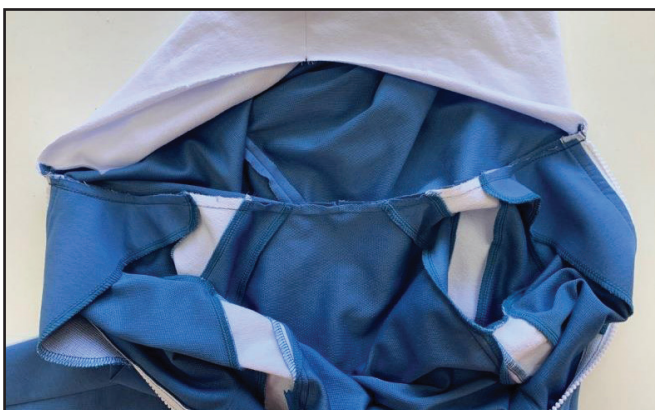
77



2,5-3

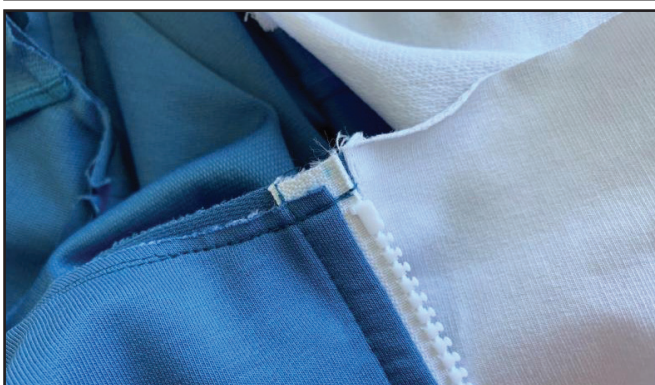
Pin the facings to the fronts along the neckline and stitch them 4 - 5 mm (3/16") in from the edge. Cut the zipper top extension.

78



2,5-3

Place the hood and the garment neckline, right sides together, and pin them aligning the marks. Stitch them 7 cm (1/4") in from the edge. Press the seam allowances towards the hood.

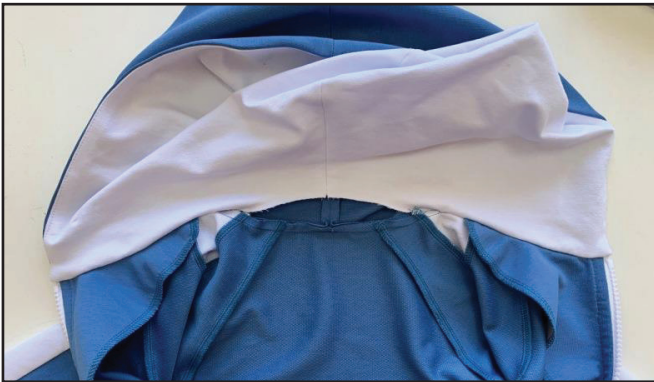


79



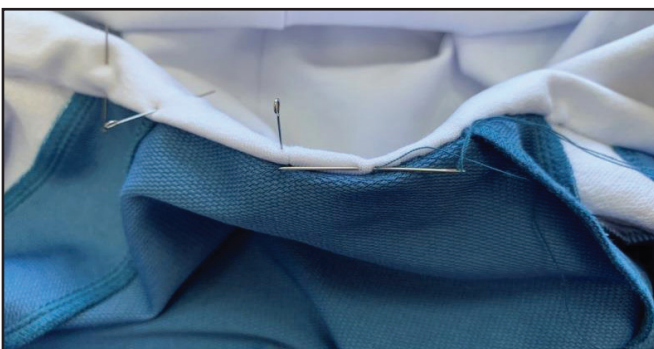
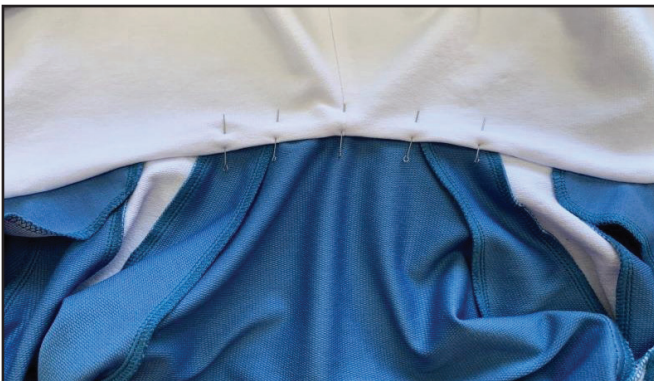
Place the hood and the hood lining and pin them along the lower edges. Stitch them as far as possible 7 mm (1/4") away from the edge.

80



Turn the hood out.

81



Turn 7 mm (1/4") of the hood lower edge seam allowances to the wrong side, pin it to the garment overlapping the hood attaching seam. Hand-baste the hood lining lower edge.

82



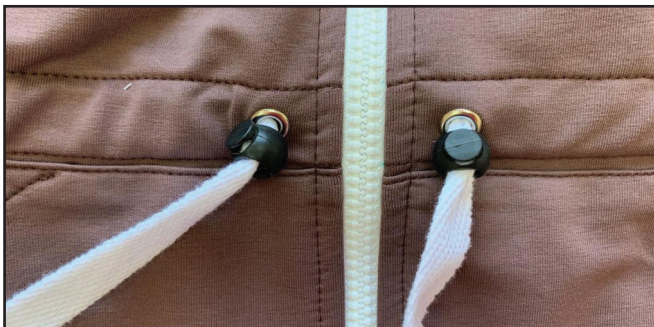
Stitch the hood and the hood lining together 2.5 cm (1") away from the outer edge.

83



Insert the flat draw cord into the casing you have got.

84



Insert the flat draw cord ends into the cord locks. You can do the same for the flat draw cord on the hood.

85



Process the flat draw cord ends as you like. Tie knots, for example.

86



If your zipper is much longer than necessary, cut off the bottom, leaving 2-3 cm (13/16 - 1 3/16").

87



Process the seam allowances of all the zipper ends with the twilled ribbon, corded silk ribbon, or any other ribbon. Place the ribbon long edge to the zipper wrong side, wrap the short edges around the zipper and pin it. Turn the ribbon other long edge to the zipper right side and stitch close to the ribbon edge.

88



Place each cuff in half, right side inside, and stitch the short edges 7 mm (1/4") in from the edge. Press the seam allowances open.

89



Place the cuff in half lengthways, wrong side inside, and insert it into the sleeve and pant leg openings. Pin them stretching the cuffs. Serge them around. Unravel the seam ends, tie two knots and hide them into the seam. Press the seam allowances towards the sleeves and pant legs.

90



Remove the basting stitches and press the garment. The jumpsuit is ready!



ELINA PATYKOVA

ПРО ШИТЬЕ

**THANK YOU FOR JOINING MY TEAM AND ME!
SHARE YOUR WORKS IN INSTAGRAM AND MY
GROUP IN VKONTAKTE. HOPE YOU WILL STAY
WITH US FOR OUR NEXT PROJECT!**