

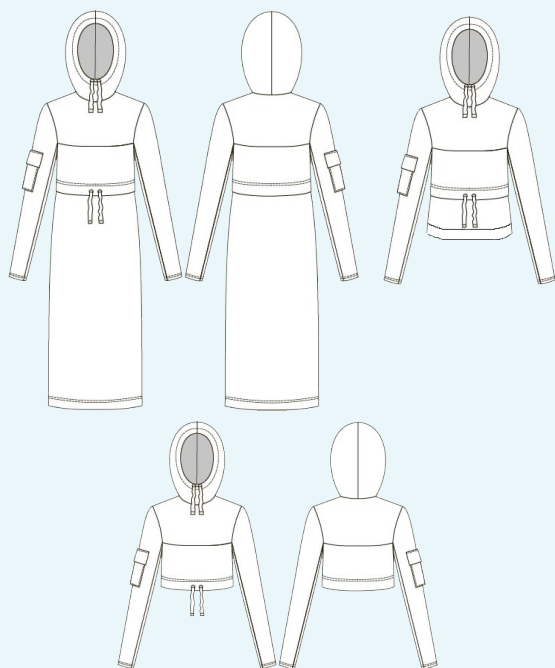
ELINA PATYKOVA

ПРО ШИТЬЕ

Instructions  
for sewing

Transformer  
Hoodie Dress  
**Color Block**  
(for women)

#колорблок\_трансформер



Skill level



## Materials and notions



- cotton lycra french terry
- eyelets - 4 pcs.
- flat draw cord
- zipper - 2 or 4 pcs.
- fusible interfacing
- aglets (optional)
- matching thread
- Jersey 75 - 80 or Stretch 75 - 80 needles

If you are not sure about the fit of the garment, it is recommended to sew a muslin with similar properties (elasticity, thickness, drape) first. This will allow you to adjust the length, width and fit of the garment and save time.

Before beginning your sewing project, wash the fabric in warm water, dry and iron it.

Let us start the cutting. Print and glue the paper patterns. When printing, do not forget to check the size of the test square.

Lay the paper pattern pieces onto the fabric. It is important to check that the grain is straight. Pin the paper pattern pieces to the fabric gently and cut the fabric along outline. Note: seam allowances are already included. Transfer all the necessary marks from the pattern onto the wrong side of your fabric.

## Now you have

### HOODIE DRESS PIECES

1. Upper back- cut 1 on the fold (color 1)
2. Middle back- cut 1 on the fold (color 2)
3. Back skirt panel - cut 1 on the fold (color 3)
4. Lower back- cut 1 on the fold (color 3)
5. Upper front - cut 2 (color 1)
6. Middle front - cut 1 on the fold (color 2)
7. Front skirt panel - cut 1 on the fold (color 3)
8. Lower front - cut 1 on the fold (color 3)
9. Hoodie waistband - cut 1 on the fold (color 3)
10. Upper sleeve - cut 2 (color 1)
11. Lower sleeve - cut 2 (color 2)
12. Sleeve pocket flap - cut 1 or 2 (color 1)
13. Sleeve pocket - cut 1 or 2 (color 1)
14. Hood - cut 2 on the fold (color 1)

### PIECES TO INTERFACE:

- Lilac – fusible interfacing for stretchy fabric:
  - places for eyelets on the hood
  - places for eyelets on the middle front
  - middle front and middle back lower edges
  - pocket top edge
  - pocket flap
  - back and front skirt panel upper edges

## Construction

# Symbols



straight stitch



the stitch length in (mm)



flat lock stitch



zigzag stitch



the stitch width in (mm)



3-Step Zigzag Seam Finishing



unilateral zipper presser foot



universal presser foot



invisible zipper presser foot



**pinning**

You should lockstitch the seam and trim the thread tails or tie the seam thread tails and hide them into the seam after sewing a serger stitch or cover seaming chain stitch.



double welting (piping) presser foot



3-thread serger stitch



4-thread serger stitch

## NOTE

**A**

### **4-thread serger stitch**

If you do not have a serger, you can use stretch stitches available on your sewing machine, or at least, a zigzag stitch.

**B**

### **3-thread serger stitch**

If you do not have a serger, you can replace it with an overedge stitch, or a zigzag stitch.

**C**

### **flat lock stitch**

If you do not have a coverstitch machine, the flat seam can be performed with a) a twin needle on a sewing machine, b) decorative stretch seam on a sewing machine, c) finish the seams with serger and stitch them with a straight stitch.

# Construction

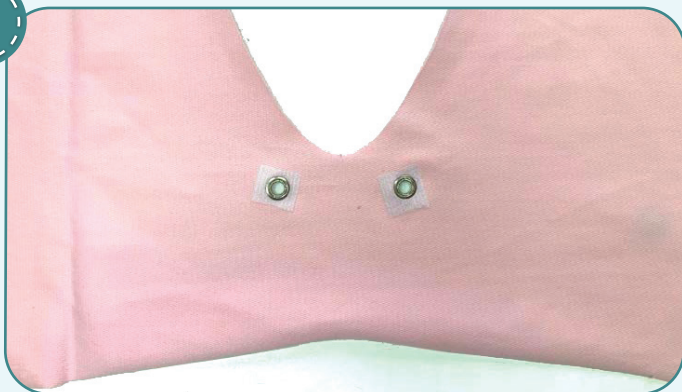


1



Fuse pieces of kantenband (2x2 cm or 3/4x3/4") onto the marks for the eyelets on the hood pieces.

2



Punch the holes and attach the eyelets at the marked places.

3



Place the hood pieces with right sides together, and stitch them along the curved edge 7 mm (1/4") in from the edge. Place the hood lining pieces, right sides together, and stitch the curved edge 7 mm (1/4") in from the edge. Press the seam allowances open.



4



2,5-3

Place the hood and the hood lining with right sides together and stitch them along the outer edge 7 mm (1/4") away from the edge.

5



3-3,5

Topstitch the seam allowances towards the lining 1 - 2 mm (1/16") away from the previous seam.

6



Place the hood lining into the hood and press the outer edge forming a roll 1 mm (1/16") towards the lining.

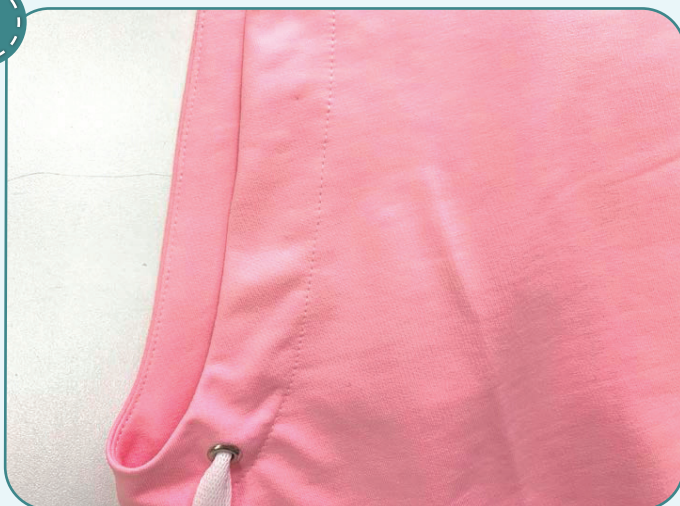
7



Thread the flat draw cord into the eyelets on the hood, move it to the hood outer edge, and pin the hood with the hood lining.



8



3-3,5

Topstitch the hood along the outer edge, 3 cm (1 3/16") away from it.

9



Place the hood and the hood lining lower edges and pin them. Trim the hood lining lower edge.



2,5-3



7

Place the upper backs and fronts, right sides together, and serge the shoulder seams. Press the seam allowances towards the back.

10



11



4

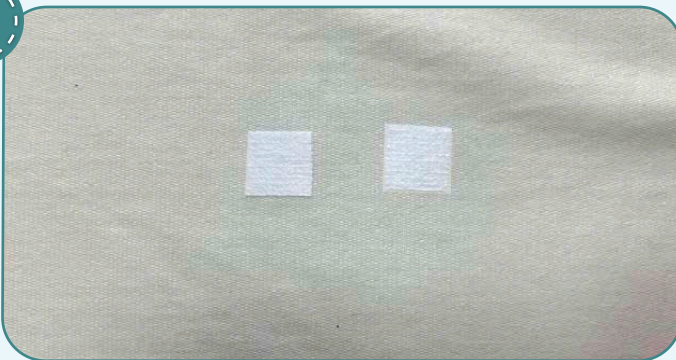
2,5-3

7

Pin the hood and the hood lining to the garment neckline and serge around the edge. Tie the thread tails and hide them into the seam.

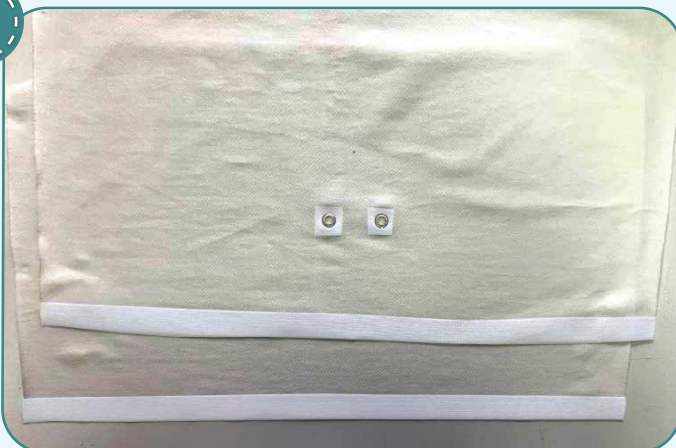


12



Fuse pieces of kantenband (2x2 cm or 3/4x3/4") onto the marks for the eyelets on the middle front.

13



Attach the eyelets to the marked places. If you are sewing a transformer, fuse the strips of interfacing 1,5-2 cm (9/16-13/16") wide to the middle front and the back lower edges.

14



4

2,5-3

7

Place the upper and the middle fronts, with right sides together, and pin them aligning the marks. Serge them. Press the seam allowances towards the middle pieces.



15



4

2,5-3

7

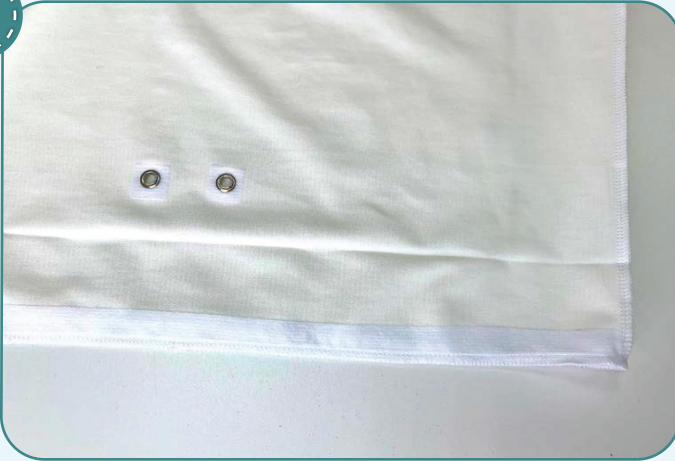
Place the middle fronts and the middle backs with right sides together and serge the side edges. Press the seam allowances towards the back.

16



Press 6 cm (2 3/8") of the middle front lower edge towards the wrong side.

17



4



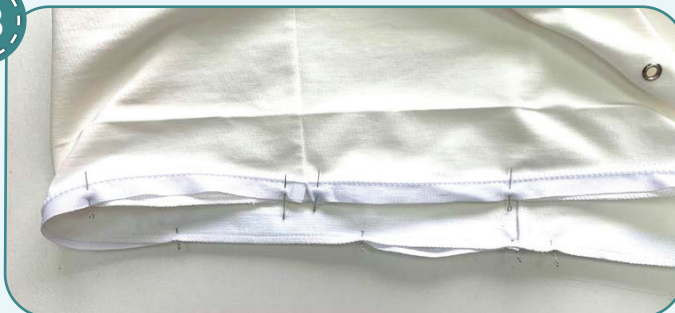
2,5-3



7

If you are sewing an ordinary hoodie or a dress (not a transformer), skip this and the following steps and go straight to step 21. If you are sewing a transformer, serge the middle piece lower edge. Tie the thread tails and hide them into the seam.

18

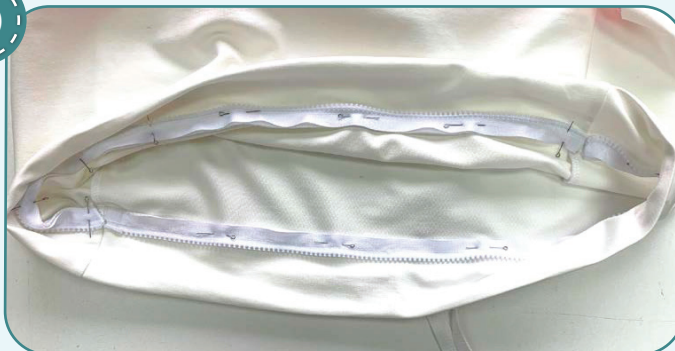


2,5-3

Undo two zippers. With right sides together pin both zipper tapes (without sliders) to the middle front and the middle back lower edges. Stitch them.



19

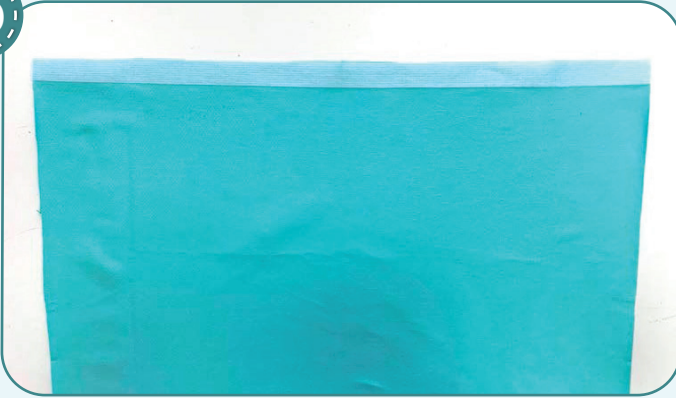


3-3,5

Unbend the seam allowances to the wrong side. Thread the flat draw cord into the casing and place it closer to the fold. Pin the zippers to the middle front and the middle back. Stitch it exactly atop the previous seam.

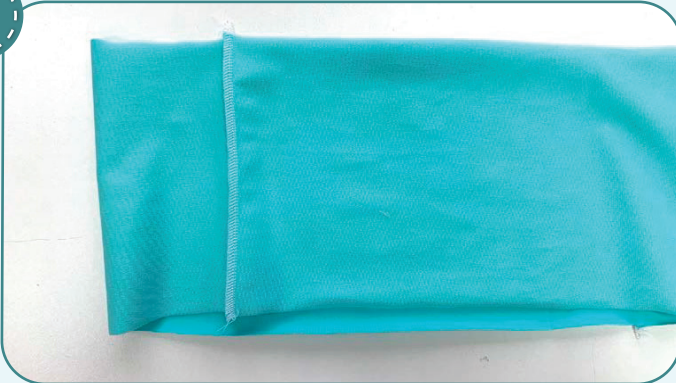


20



Fuse pieces of interfacing 15-20 mm (9/16 - 13/16") wide to the upper edges of the garment lower pieces.

21

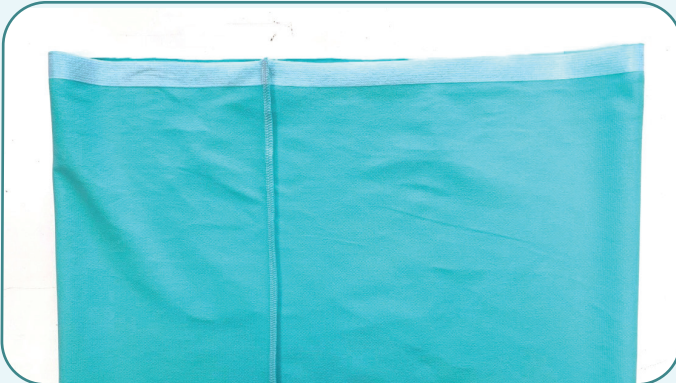


4

2,5-3

7

Place the garment lower pieces with right sides together and serge the side edges. Press the seam allowances towards the fronts.



22

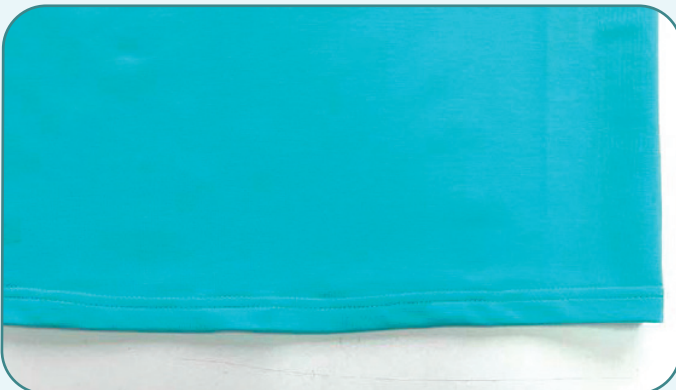


2,5-3,5

2,5-3,5

2,5-3,5

Press 2 cm (13/16") of the skirt lower hem towards the wrong side. Coverstitch it. Tie the thread tails and hide them into the seam.

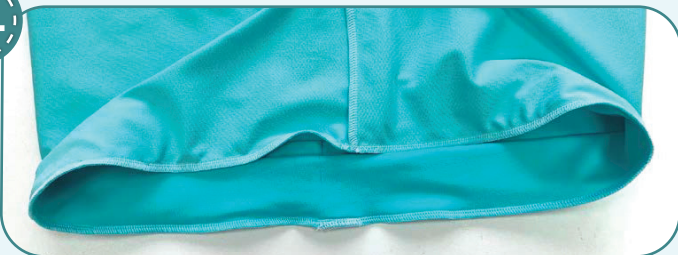


23



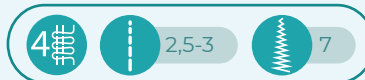
Place the hoodie waistband in half, right side inside, and stitch the short edges 7 mm (1/4") in from the edge. Press the seam allowances open.

24



Place the waistband in half, lengthways, wrong sides inside, and place it to the lower edge of the hoodie lower piece. Pin the pieces aligning the marks. Serge them around the edge. Tie the thread tails and hide them into the seam. Press the seam allowances towards the hoodie lower piece.

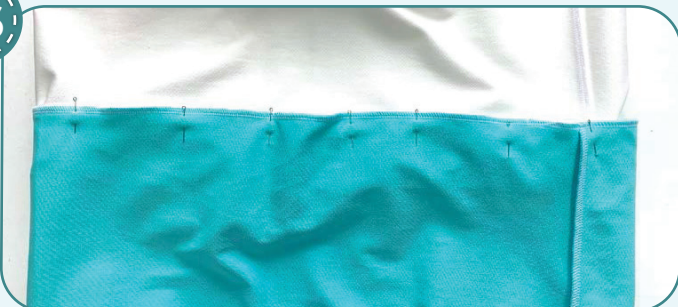
25



If you are sewing a transformer, skip this and the following steps and go straight to step 28.

If you are sewing an ordinary hoodie or dress (not a transformer), fold the lower and middle pieces with right sides together and pin together, aligning the marks. Serge them around the edge. Tie the thread tails and hide them into the seam.

26



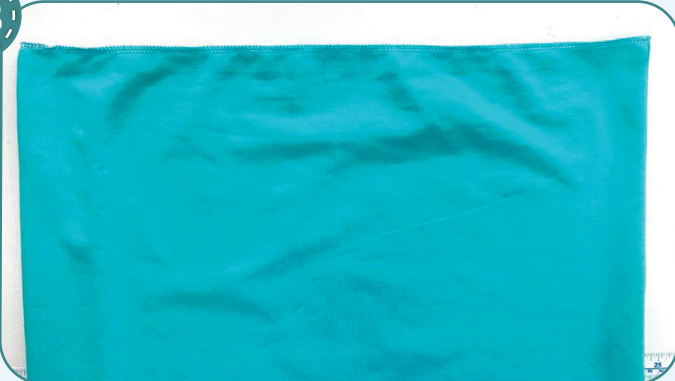
Fold the garment middle pieces along the previously pressed fold. Thread the flat draw cord into the casing you have got. Pin the previous seam allowances to the garment middle part. Stitch 7-10 mm (1/4 - 3/8") in from the edge.

27



This is what it looks like from the right side.

28



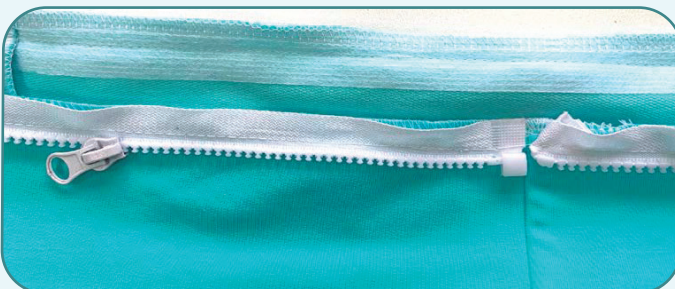
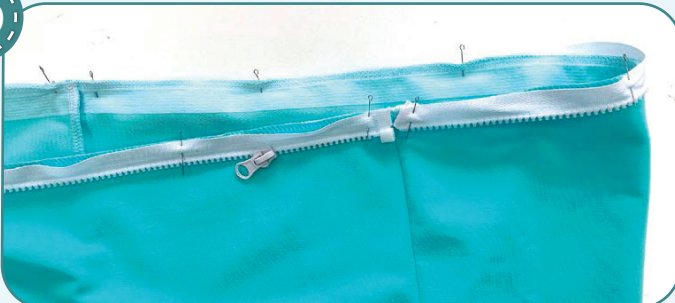
4

2,5-3

7

If you are sewing an ordinary hoodie or dress (not transformer), skip this and the following steps and go straight to step 32. If you are sewing a transformer, serge the lower piece upper edge. Tie the thread tails and hide them into the seam.

29



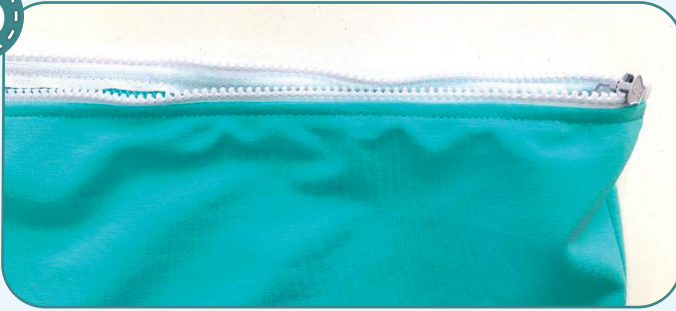
4

2,5-3

7

Pin the other tapes of the zippers (with sliders) to the garment lower part, wrong side to right side. Stitch them.

30



2,5-3

Unbend the zipper to the piece wrong side and stitch 5-7 mm ( $3/16$  -  $1/4$ " ) away from the fold.

31



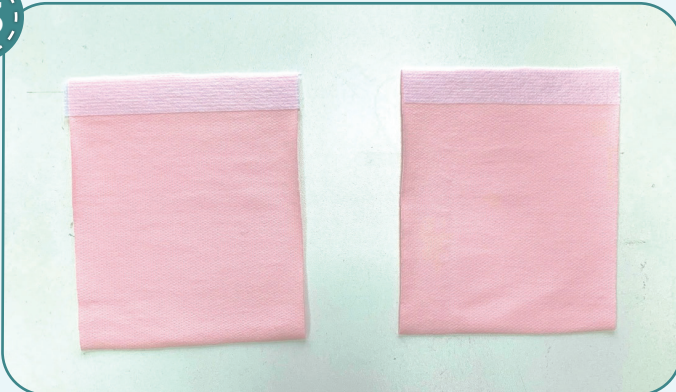
Here is what you will get when you zip up.

32



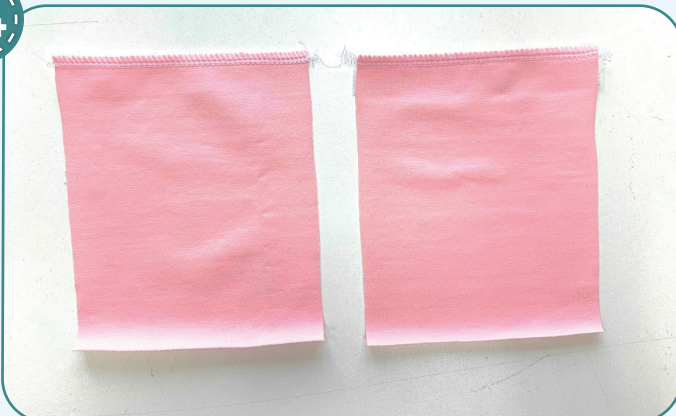
Process the flat draw cord ends as you like. For example, you could tie knots.

33



Fuse the strips of interfacing 2 cm ( $13/16$ " ) wide to the patch pocket top edges.

34



2,5-3



7

Finish the pocket top edge with a serger. Press the seams.

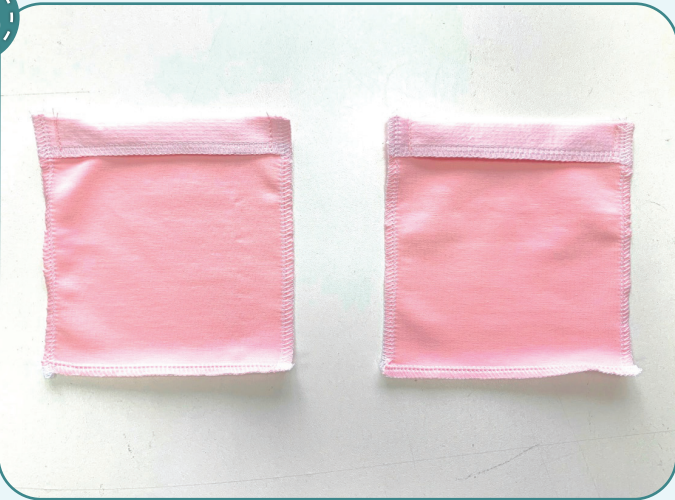
35



2,5-3

Turn the seam allowances 2 cm (13/16") wide along the pocket top edge to the right side and topstitch them along the side seams 1 cm (3/8") in from the edge.

36



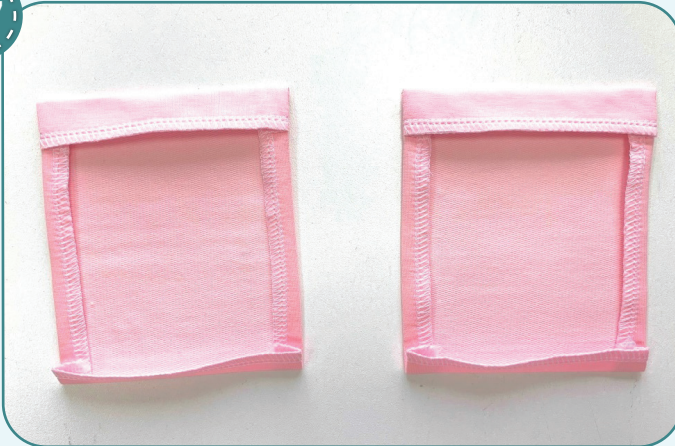
2,5-3



7

Finish the pocket side and bottom edges. Press the seams.

37



Turn the pockets out to the right side and press them. Press the pocket side and lower edges seam allowances, 1 cm (3/8") wide, to the wrong side.

38



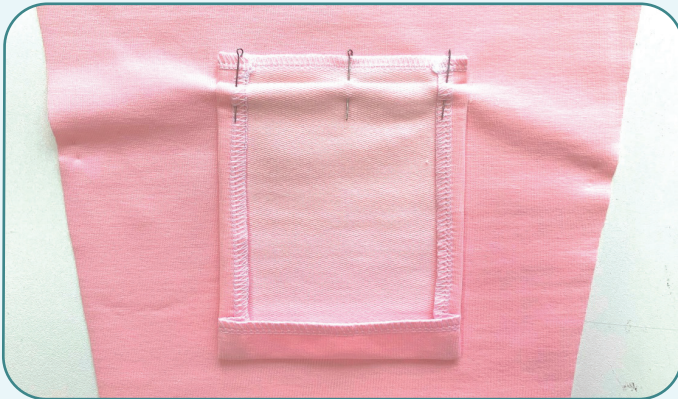
3-3,5

Topstitch the seam allowances along the pocket top edge 15 mm (9/16") away from the fold.

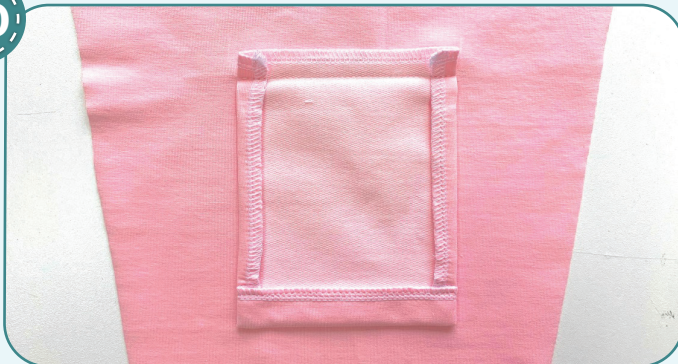
39



Place the pocket fold to the lower marking lines on the sleeve and pin them.



40



2,5-3

Topstitch the pocket, exactly atop the fold line. Unbend the pocket upwards and press it.

41



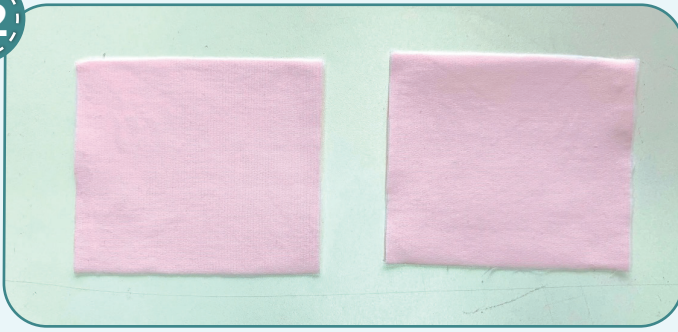
3-3,5

Pin the pocket to the sleeve along the side edges. Topstitch the pocket along the bottom and side edges 1 - 2 mm (1/16") away from the edge. Press the seams.



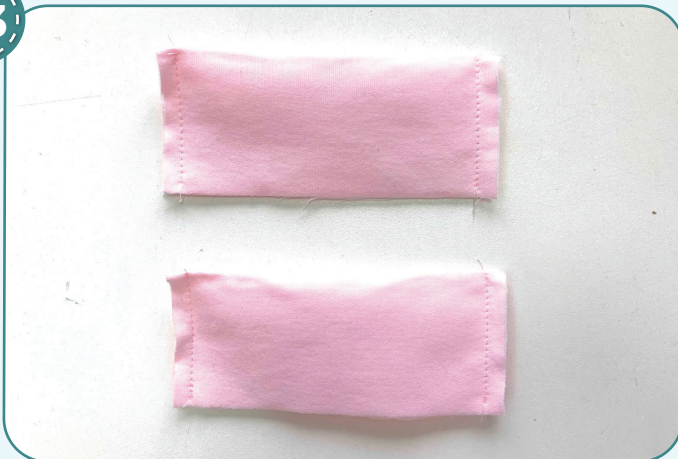


42



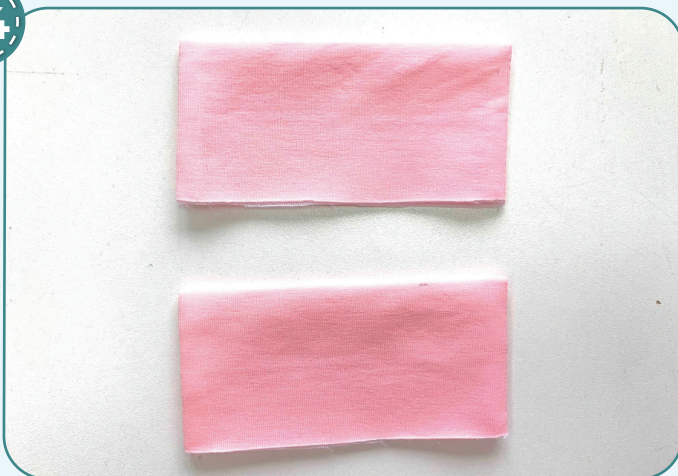
Fuse interfacing to both pocket flaps.

43



Place the pocket flap in half, lengthways, right sides together, and stitch its short edges 7 mm (1/4") in from the edge.

44



Turn the flaps out to the right side, smooth the corner points and press them.

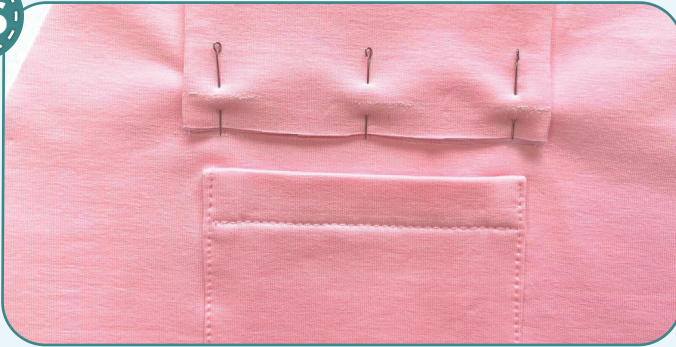
45



Mark up the sleeve 1 cm (3/8") away from the pocket top edge. Mark up the pocket flap 1 cm (3/8") in from the open edge.



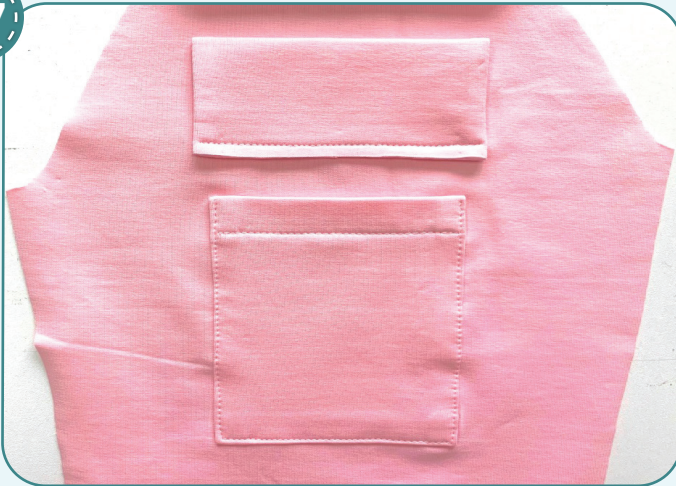
46



Pin the pocket open edge to the marking line on the sleeve. Topstitch along the marking line on the flap.

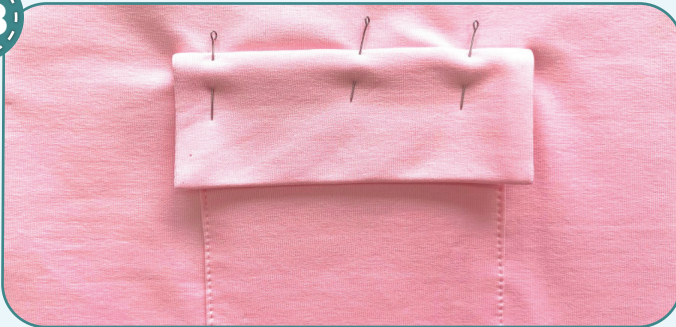


47



Trim the seam allowances to 5 mm (3/16").

48



Turn the flap down, press and pin it. Topstitch the seam allowances 7 mm (1/4") away from the fold.



49



4

2,5-3

7

Place the upper and lower sleeves, right sides together, and pin them. Serge them. Press the seam allowances towards the lower sleeves.

50



3-3,5

3-3,5

7

Unbend the seam allowances to the wrong side (2 cm or 13/16") along the sleeve lower hems and press them. Coverstitch the sleeve hems. Tie the thread tails and hide them into the seam. Press the seams.



51



4

2,5-3

7

With right sides together, place the sleeves along the armholes and pin them around, aligning the marks. Serge them around the armholes. Tie the thread tails and hide them into the seam. Press the seams.



Remove the basting stitches and press the garment. Your transformer hoodie dress is ready!



ELINA PATYKOVA

ПРО ШИТЬЕ

**Transformer  
Hoodie Dress  
Color Block**  
(for women)

Thank you for joining my team and me!  
Share your works in instagram and my group in vkontakte. Hope you will stay with us for our next project!

