

ELINA PATYKOVA

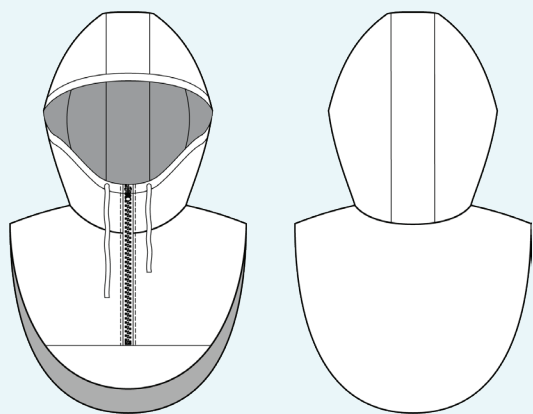
ПРО ШИТЬЕ

Instructions  
for sewing

## Hood

(for children  
and women)

#капюшон\_style



Skill level

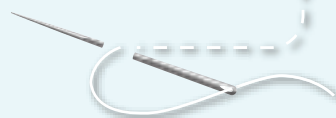


## Materials and notions



- shell fabric (Dewspo, membrane fabric, twill etc.)
- polyester insulation 100-150 g (alpolux, polyester batting, meida etc.)
- lining fabric
- zipper
- draw cord
- eyelets 5 - 6 mm (1/4") - 2 pcs.
- 1-hole cord lock - 2 pcs.
- matching thread
- Microtex 70-80 needles

If you are not sure about the fit of the garment, it is recommended to sew a muslin with similar properties (elasticity, thickness, drape) first. This will allow you to adjust the length, width and fit of the garment and save time.



Let us start the cutting. Print and glue all the paper patterns. When printing, do not forget to check the size of the test square.

Put the paper pattern pieces onto the fabric. It is important to check that the grain is straight. Pin the paper pattern pieces to the fabric gently and cut the fabric along them.

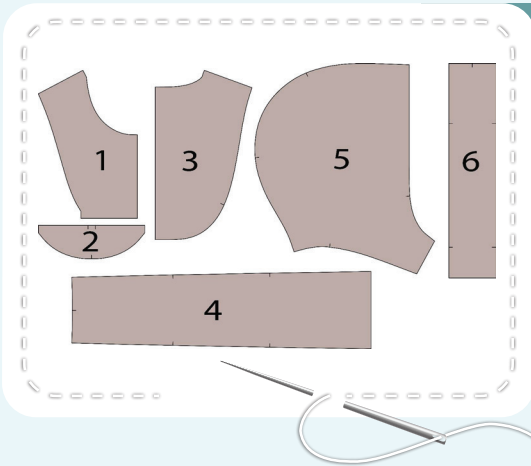
**NOTE:** seam allowances are already included. Transfer all the marks from the pattern onto the wrong side of your fabric.





## Now we have all the

### HOODIE PIECES:



1. front yoke - cut 2 (shell fabric), cut 2 - (insulation), cut 2 - (lining fabric)
2. front - cut 1 (shell fabric), cut 1 - (insulation), cut 1 - (lining fabric)
3. back - cut 1 on the fold (shell fabric), cut 1 on the fold (insulation), cut 1 on the fold (lining fabric)
4. hood center piece - cut 1 (shell fabric), cut 1 - (insulation), cut 1 - (lining fabric)
5. hood side piece - cut 2 (shell fabric), cut 2 - (insulation), cut 2 - (lining fabric)
6. hood casing - cut 1 on the fold (shell fabric), cut 1 on the fold (insulation)

**NOTE:** cut rough the pieces from insulation, adding 2-3 cm to the pieces seam allowances.



## Now we can start sewing

# Symbols



straight stitch



the stitch length in (mm)



flat lock stitch



zigzag stitch



the stitch width in (mm)



3-Step Zigzag Seam Finishing



unilateral zipper presser foot



universal presser foot



invisible zipper presser foot



**pinning**

You should lockstitch the seam and trim the thread tails or tie the seam thread tails and hide them into the seam after sewing a serger stitch or cover seaming chain stitch.



double welting (piping) presser foot



3-thread serger stitch



4-thread serger stitch

## NOTE

**A**

### **4-thread serger stitch**

If you do not have a serger, you can use stretch stitches available on your sewing machine, or at least, a zigzag stitch.

**B**

### **3-thread serger stitch**

If you do not have a serger, you can replace it with an overedge stitch, or a zigzag stitch.

**C**

### **flat lock stitch**

If you do not have a coverstitch machine, the flat seam can be performed with a) a twin needle on a sewing machine, b) decorative stretch seam on a sewing machine, c) finish the seams with serger and stitch them with a straight stitch.



# Hood construction



1



Glue all the hood shell pieces wrong sides with stationery glue-pencil along the outline and you can also draw some stripes inside the piece. Glue the shell fabric pieces to the corresponding insulation pieces and evenly smooth out the fabric.

2



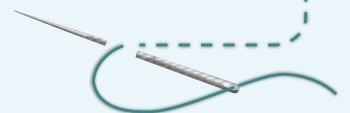
3

4

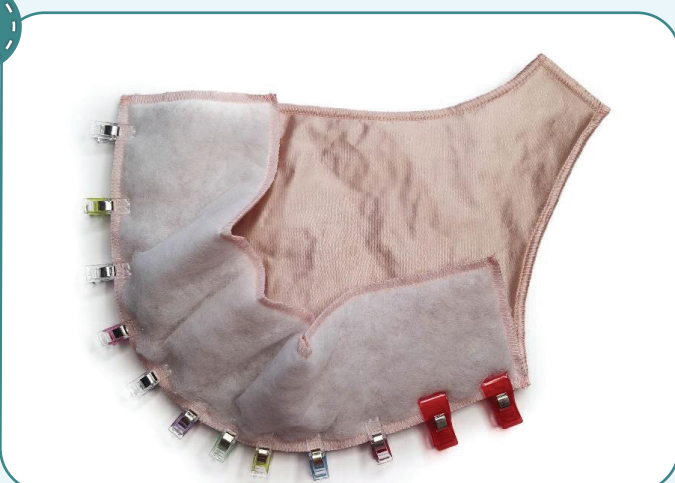
7

Pin the shell fabric to the insulation along the outline as dense as possible. Serge the shell and the insulation pieces together. Serger trims the excess insulation, fixes the shell and the insulation together and makes the seam allowances flatter. If you do not have a serger, sew the shell fabric piece with a straight stitch 4 - 5 mm (3/16") away from the edge, then trim the excess insulation.

**NOTE:** If the fabric is slippery or you lack of experience, you would better hand-baste instead of pinning the fabric. To avoid pinholes after hand-basting, stitch on the seam allowance close to the seam.



3



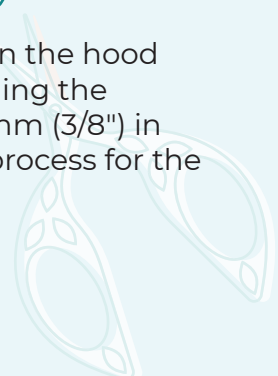
2,5-3

2,5-3

2,5-3

2,5-3

With right sides together, pin the hood side and center pieces, aligning the marks. Stitch the pieces 10 mm (3/8") in from the edge. Repeat the process for the opposite hood side piece.



## HOOD CONSTRUCTION

4



2,5-3

Pin or clip the casing along the hood outer edge. Stitch it 10 mm (3/8") in from the edge.

5



2,5-3

Pin the front yokes and back along the shoulder edges with right sides together. Stitch them 10 mm (3/8") in from the edge.

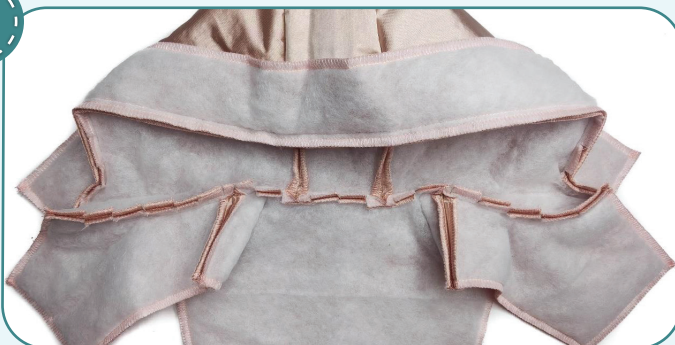
6



2,5-3

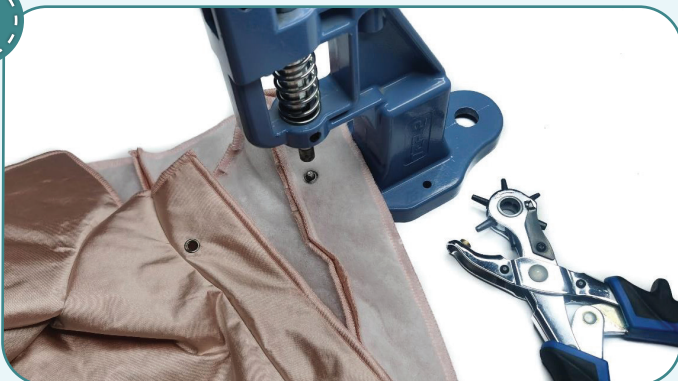
Pin the hood to the neckline with right sides together, aligning the marks. Stitch the hood 10 mm (3/8") in from the edge.

7



Slash the seam allowances along the neckline every 15 - 20 mm (5/8-3/4"), 1 mm (1/16") before the seam.

8



Punch the holes for the eyelets 3,5 mm (1/8") on the casing or cut them with scissors following the marks. Attach the eyelets with a press.





9



2,5-3

With right sides together, pin the hood lining side and center pieces, aligning the marks. Stitch the pieces 10 mm (3/8") in from the edge. Repeat the process for the opposite hood lining side piece. Press the seam allowances towards the hood lining center piece.

10



2,5-3

With right sides together, pin the front yoke lining pieces and back lining piece along the shoulder edges. Stitch them 10 mm (3/8") in from the edge. Press the seam allowances open.

11



2,5-3

Pin the hood lining to the lining neckline with right sides together aligning the marks. Stitch the hood lining 10 mm (3/8") in from the edge.

12



Slash the seam allowances along the neckline every 15 - 20 mm (5/8-3/4"), 1 mm (1/16") before the seam. Press the seam allowances down.

13



2,5-3

Pin the hood lining and the hood casing with right sides together. Stitch them 10 mm (3/8") in from the edge.

14



Slash the hood lining seam allowances along the curved edges, 1 mm (1/16") before the stitching.

15



2,5-3

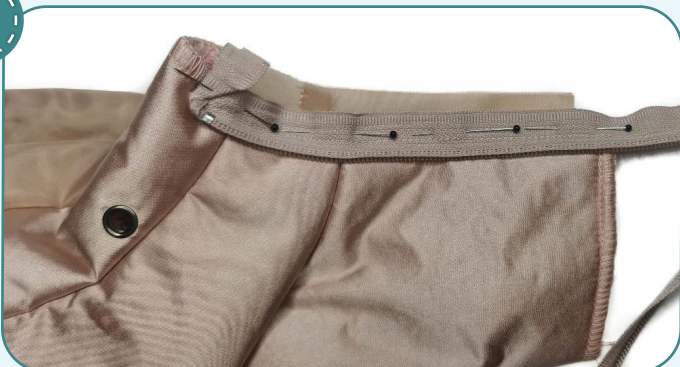
Pin the front yoke and the back to the lining along the outer edge aligning the shoulder seams and the marks. Stitch them 10 mm (3/8") in from the edge.

16



Slash the seam allowances every 10 - 20 mm, (3/9-13/16") 1 mm (1/16") before the stitching. Turn it out and slightly press the edges, forming a roll towards the lining. Hold the iron above the garment, not to flatten the insulation and iron it using a piece of cloth. Iron the scrap of the shell fabric first not to spoil the garment.

17



2,5-3

Pin or baste one zipper tape to the hood center edge with right sides together. Pin the zipper to sit accurately in the seam without waving and pulling the fabric. Place the zipper top stops 1 mm (1/16") below the placket center line. Stitch the zipper in place with a unilateral zipper presser foot 10 mm (1/8") away from the

zipper edge. If the slider prevents you from finishing the seam, then place the machine needle in the work, raise the zipper foot, move the zipper slider, lower the zipper foot and sew on.



18



Close the zipper and mark the place for attaching the casing, the hood and the front yoke lower edge on the other zipper tape.

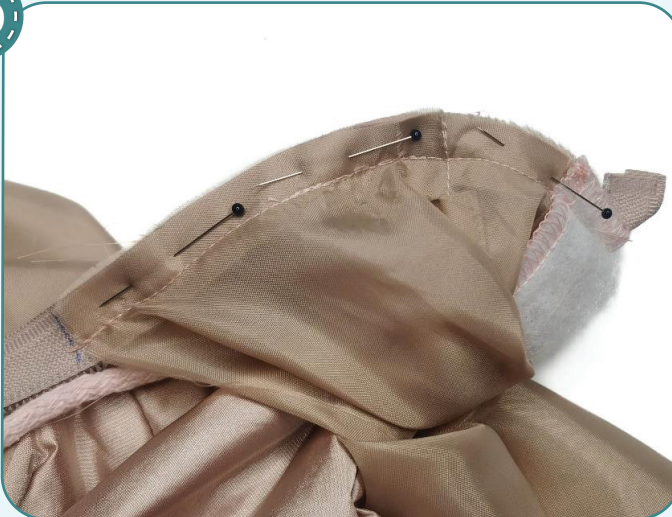
19



Baste or pin the other zipper tape to the hood center edge, with right sides together. Very precisely align the zipper top stops with the casing center line and align the marks on the zipper with the casing and the hood attaching seams and the front yoke lower edge. Stitch the zipper with a unilateral zipper presser foot

10 mm (3/8") away from the edge, in the same way as you attached the first zipper tape. Close the zipper, care the casing centers, casing attaching seams and the front yoke lower edges match, and the zipper sits accurately.

20



Pin the hood center edges and the lining central edges with right sides together. Stitch them 1 cm (3/8") in from the edge. Stitch on the insulation piece caring the stitching align with zipper attaching seam. Repeat the process for the opposite side. Trim the corners and turn the hood out to the right side.

21



Insert the draw cord from the wrong side, attach the cord locks and tie the knots on the cord ends.



22



2,5-3

Now you have only front yoke lower edges raw. Turn the hood out to the wrong side through one of them. Align the casing edges, pin them, caring the draw cord to stay inside the casing. Stitch the casing edges with a unilateral zipper presser foot 8-9 mm (5/16-3/8") away from the edge. Stitch at the beginning and the end of the seam as close to the zipper as possible.

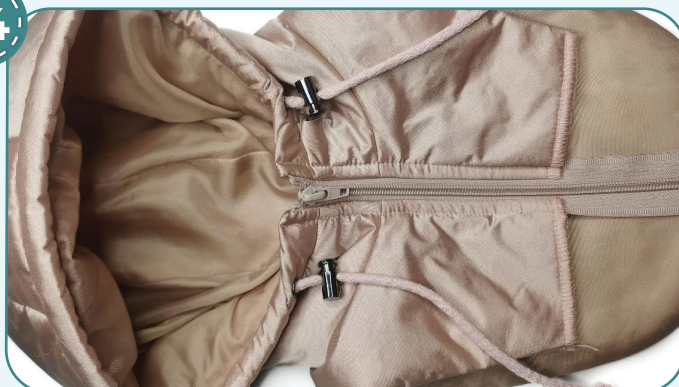
23



2,5-3

Tuck the hood inside and align the back neckline with the back lining neckline. Pin them between the shoulder edges. Stitch the neckline edges with a unilateral zipper presser foot 8-9 mm (5/16-3/8") away from the edge. Turn the hood out to the right side.

24



2,4-2,8

Topstitch the zipper 10 mm (3/8") away from the edge. While stitching, smooth the lining.

25



0 5-6

Make a zig-zag bar tack just above the front yoke lower hem. Trim excess zipper.

26



2,4-,2,8

Secure the yoke and the lining lower hems with a straight stitch 5 mm (3/16") away from the edge.

27



2,4-,2,8

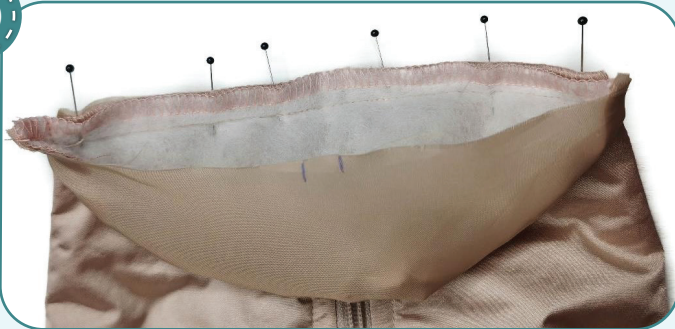
Pin the front and the front lining along the curved edge with right sides together. Stitch them 10 mm (3/8") in from the edge.

28



Slash the seam allowances every 10 - 15 mm, (3/8"-) 1 mm (1/16") before the stitching. Turn the piece out.

29

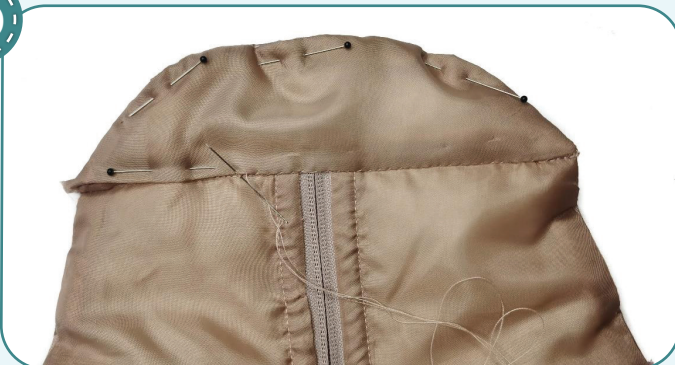


2,5-3

Pin the front to the yoke lower hem with right sides together. Stitch them 10 mm (3/8") in from the edge. Stitch from the yoke side, to align the side seams at the beginning and the end of the stitching accurately. To avoid breaking the needle while stitching on the zipper, turn the

hand wheel manually. Trim the corners.

30



Pin the front lining raw edge, tucking the seam allowance inside. Use hand stitching to sew it. Press the front lower hem forming a roll towards the lining. Hold the iron above the garment, not to flatten the insulation and iron it using a piece of cloth.



31



Remove the basting stitches, trim the thread tails and press the garment once again. The removable hood is ready!

ELINA PATYKOVA

ПРО ШИТЬЕ

## Hood

(for children  
and women)

Thank you for joining my team and me!  
Share your works in instagram and my group in vkontakte. Hope you will stay with us for our next project!

