

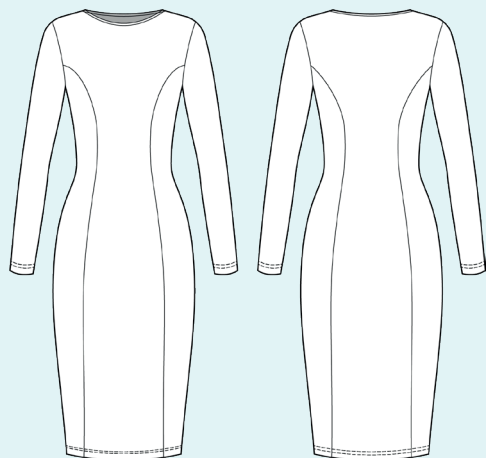
ELINA PATYKOVA

ПРО ШИТЬЕ

Instructions
for sewing

Pencil dress

#карандаш_платье



Skill level



Materials and notions



- jersey
- matching thread
- Super Stretch 70–80 or Jersey 70-80 needles

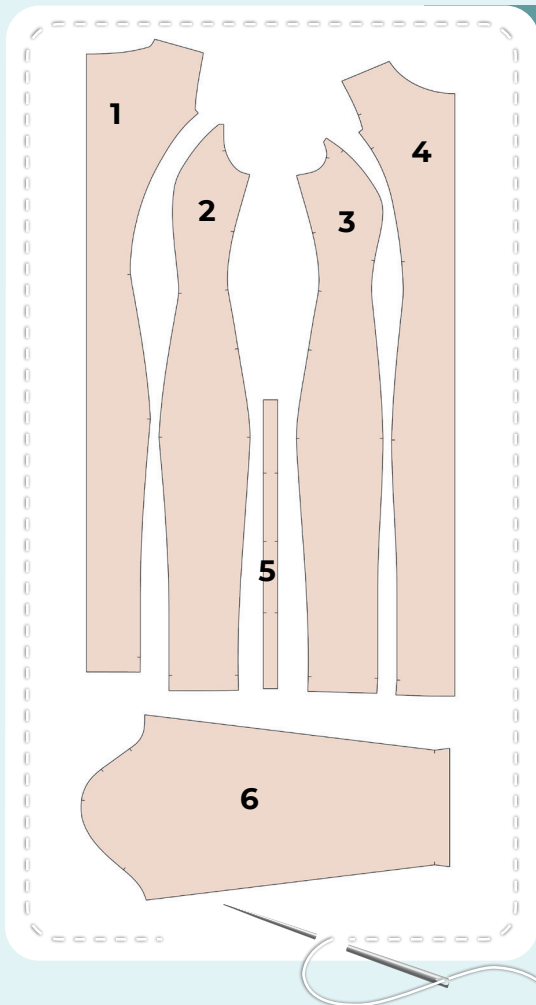
If you are not sure about the fit of the garment, it is recommended to sew a muslin with similar properties (elasticity, thickness, drape) first. This will allow you to adjust the length, width and fit of the garment and save time.

To find out how long a piece of fabric to take, you should place the pattern pieces onto the table, the floor or bedspread, pre-measured width equal to half the width of the selected fabric. Place the pieces, caring the direction of the grain line, their number, i.e., the way you will place them when cutting. Measure the length of the pattern pieces fit, add to this length 5% for the fabric shrinkage - this will be the required amount of fabric for the project. Before beginning your sewing project, wash the fabric in warm water, dry and iron it.

Let us start the cutting. Print and glue the paper patterns. When printing, do not forget to check the size of the test square.

Put the paper pattern pieces onto the fabric. It is important to check that the grain is straight. Pin the paper pattern pieces to the fabric gently and cut the fabric along the outline. Note: seam allowances are already included. Transfer all the marks from the pattern onto the wrong side of your fabric.

Now you have



DRESS PIECES:

- 1.** center front - cut 1 on the fold
- 2.** side front - cut 2
- 3.** center back - cut 1 on the fold
- 4.** side back - cut 2
- 5.** sleeve - cut 2
- 6.** neckband - cut 1

Construction

Symbols



straight stitch



the stitch length in (mm)



flat lock stitch



zigzag stitch



the stitch width in (mm)



3-Step Zigzag Seam Finishing



unilateral zipper presser foot



universal presser foot



invisible zipper presser foot



pinning

You should lockstitch the seam and trim the thread tails or tie the seam thread tails and hide them into the seam after sewing a serger stitch or cover seaming chain stitch.



double welting (piping) presser foot



3-thread serger stitch



4-thread serger stitch

NOTE

A

4-thread serger stitch

If you do not have a serger, you can use stretch stitches available on your sewing machine, or at least, a zigzag stitch.

B

3-thread serger stitch

If you do not have a serger, you can replace it with an overedge stitch, or a zigzag stitch.

C

flat lock stitch

If you do not have a coverstitch machine, the flat seam can be performed with a) a twin needle on a sewing machine, b) decorative stretch seam on a sewing machine, c) finish the seams with serger and stitch them with a straight stitch.



Dress construction



1



4

2,5-3,5

7

With right sides together, pin the front and the side front along the princess line aligning the marks. Serge the pieces. Press the seam allowances towards the center front. Repeat the process for the opposite side front.

2



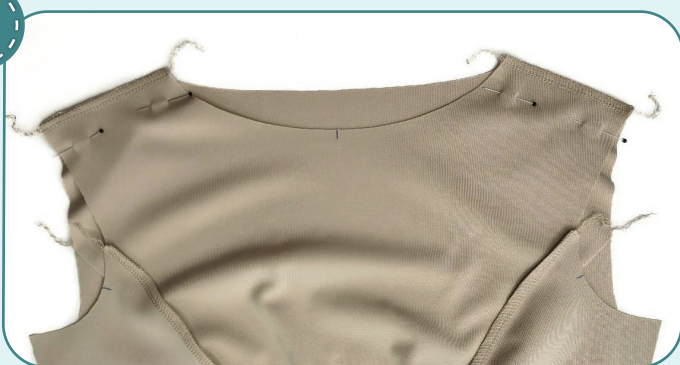
4

2,5-3,5

7

Repeat the process for joining the side backs to the center back (step 1).

3



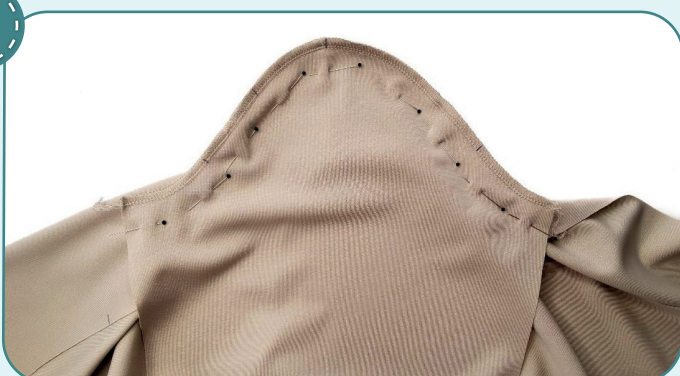
4

2,5-3,5

7

Pin the front and the back along shoulder edges with right sides together. Serge the seams. Press the seam allowances flat towards the fronts.

4



4

2,5-3,5

7

With right sides together, pin the sleeve into the armhole, aligning the marks. Serge the sleeve in place. Press the seam allowances towards the front and the back. Repeat the process for the other sleeve.



5



4



2,5-3,5



7

Pin the sleeve, the front with the back along the side seam with right sides together. Serge the pieces. To avoid bulk, place the sleeve attaching seam allowances in different directions. Press the seam allowances towards the front. Repeat the process for the other side seam.

6



2,5-3

Stitch the neckband in a ring 7 mm (1/4") in from the edge, having pinned the short edges beforehand.

7



Clip the seam allowances at an angle towards the seam to avoid bulk later. Press the seam allowances open.

8



Fold the neckband in half, lengthways, wrong side inside, and press it. At the same time, shape the neckline with an iron, slightly stretching the raw edges and ironing the fold. For convenience, you can pin it at the marked places beforehand.

9



Pin the neckband to the garment neckline right side. Align the neckband seam with the back center, neckband center with front center and the other marks with the shoulder seams.



10



4



2,5-3,5



5

Serge the neckband to the garment. In the process, evenly stretch the neckband, but care not to stretch the neckline. Set the stitch width at 5 mm (3/16"). Press the seam down.



11



2,5-3

Topstitch the neckline 1 mm (1/16") away from the neckband attaching seam. Press the neckline.

12



2,5-3



5,6

Fold the garment and the sleeve lower hems to the wrong side by 25 mm (1") and press them. You can hand-baste the lower hems. Coverstitch the lower hems. Tie the thread tails on the wrong side and hide them into the seam. Iron the garment.

13



Remove the basting stitches, trim, and hide the thread tails and press once again. The dress is ready!

ELINA PATYKOVA

ПРО ШИТЬЕ

Instructions
for sewing

Pencil dress

Thank you for joining my team and me!
Share your works in instagram and my group in vkontakte. Hope you will stay with us for our next project!

