

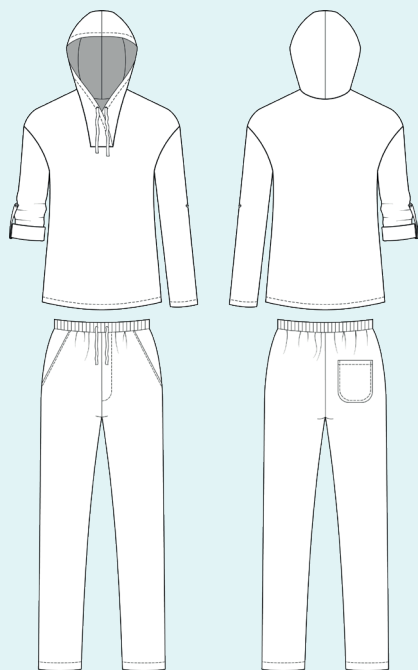
ELINA PATYKOVA

ПРО ШИТЬЕ

Instructions
for sewing

Summer suit Linen

#костюм_лен_мужчины



Skill level



Materials and notions



- linen, muslin
- fusible interfacing
- elastic band 45 mm (1 3/4") wide
- 2 buttons 10-15 mm (3/8-9/16")
- matching thread
- Universal 80-90 needles

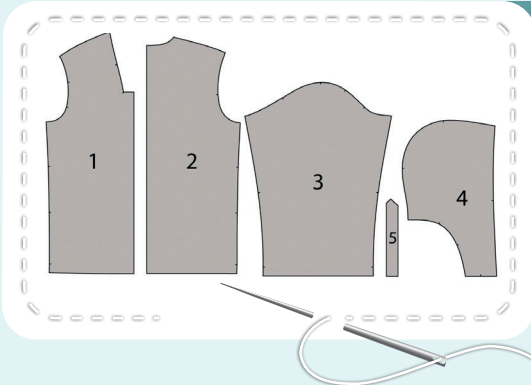
If you are not sure about the fit of the garment, it is recommended to sew a muslin with similar properties (elasticity, thickness, drape) first. This will allow you to adjust the length, width and fit of the garment and save time.

Before beginning your sewing project, wash the fabric in warm water, dry and iron it.

Let us start the cutting. Print and glue the paper patterns. When printing, do not forget to check the size of the test square.

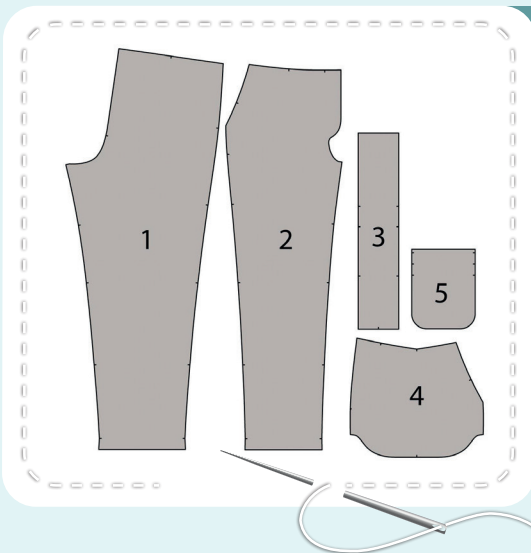
Lay the paper pattern pieces onto the fabric. It is important to check that the grain is straight. Pin the paper pattern pieces to the fabric gently and cut the fabric along outline. Note: seam allowances are already included. Transfer all the marks from the pattern onto the wrong side of your fabric.

Now you have



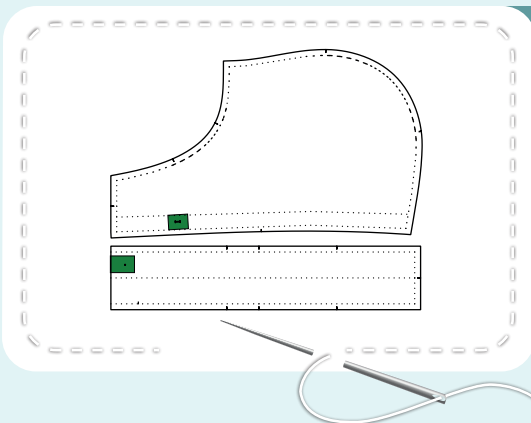
SHIRT PIECES:

1. front - cut 1 on the fold
2. back - cut 1 on the fold
3. sleeve - cut 2
4. hood - cut 4
5. sleeve tab - cut 2 on the fold



PANTS PIECES:

1. pant back - cut 2
2. pant front - cut 2
3. waistband - cut 1 on the fold
4. pocket lining - cut 2
5. back pocket - cut 1



PIECES TO INTERFACE

- Green - fusible interfacing
 - the area for the flat draw cord openings on the hood
 - the area for the flat draw cord openings on the pant waistband

Construction

Symbols



straight stitch



the stitch length in (mm)



flat lock stitch



zigzag stitch



the stitch width in (mm)



3-Step Zigzag Seam Finishing



unilateral zipper presser foot



universal presser foot



invisible zipper presser foot



pinning

You should lockstitch the seam and trim the thread tails or tie the seam thread tails and hide them into the seam after sewing a serger stitch or cover seaming chain stitch.



3-thread serger stitch



4-thread serger stitch

NOTE

A

4-thread serger stitch

If you do not have a serger, you can use stretch stitches available on your sewing machine, or at least, a zigzag stitch.

B

3-thread serger stitch

If you do not have a serger, you can replace it with an overedge stitch, or a zigzag stitch.

C

flat lock stitch

If you do not have a coverstitch machine, the flat seam can be performed with a) a twin needle on a sewing machine, b) decorative stretch seam on a sewing machine, c) finish the seams with serger and stitch them with a straight stitch.



Shirt construction



1



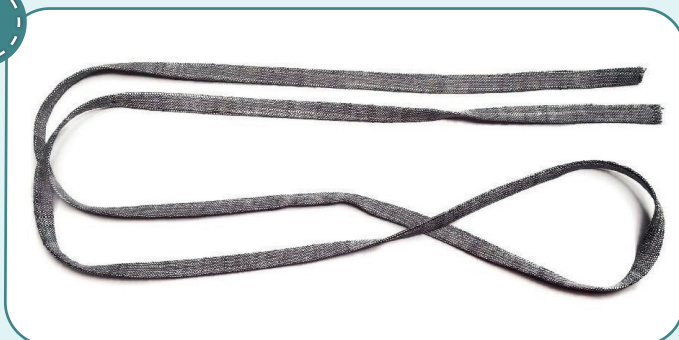
To make a flat draw cord, cut a strip of fabric 120-130 cm (3-4 ft) long and 35 mm (1 3/8") wide.

2



Press the strip edges to the center with wrong side inside. Then fold it in half lengthways and press. For convenience, you can hand-baste it beforehand.

3



2,5-3

Stitch it 1 mm (1/16") in from the edge. Press it.

4

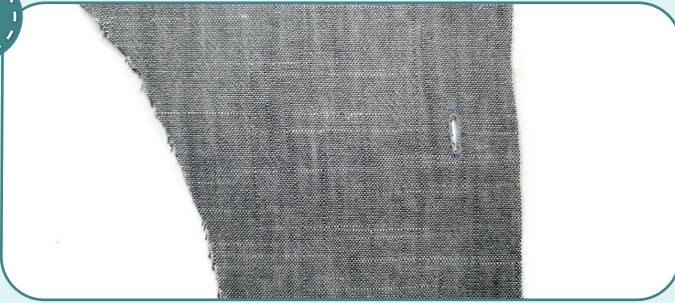


Reinforce the area for the flat draw cord openings in the hood with scraps of interfacing 30x40 mm (1 3/16x1 9/16").



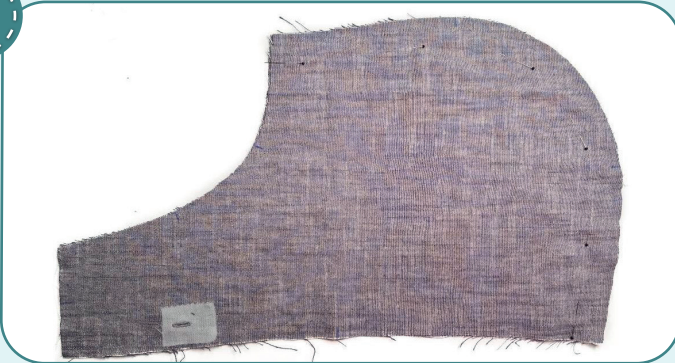


5



Make the flat draw cord size openings with the buttonholing presser foot. Use a seam ripper to cut the openings but avoid cutting the stitching threads. Press it with an iron.

6



2,5-3

Pin the hood pieces with right side inside. Stitch the pieces 10 mm (3/8") in from the edge.

7



3-4



7

Finish the edges together with a 3-thread serger stitch. Press the seam allowances towards the hood right piece. Repeat the process for the hood lining pieces (steps 6-7).

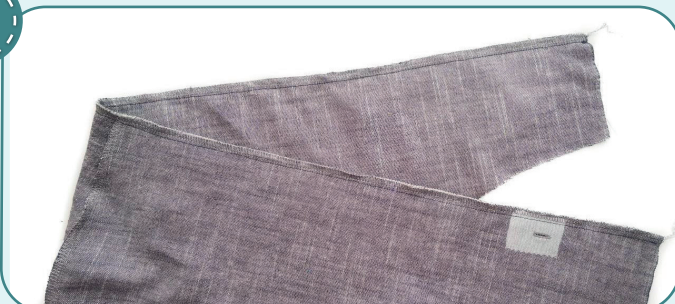
8



2,5-3

Insert the hood lining into the hood with right sides together and pin them along the outer edge. Stitch them 10 mm (3/8") in from the edge.

9



3-4



7

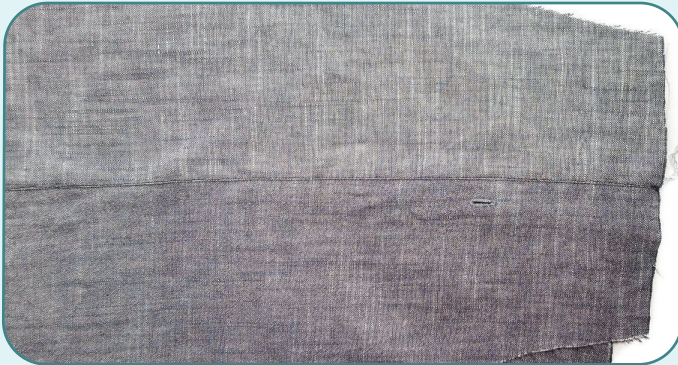
Finish the edges together with a 3-thread serger stitch. Press the seam allowances towards the hood lining.

10



2,4-2,8

Working on the hood lining side, stitch on the lining hood attaching seam 1 mm (1/16") away from the seam. Press the hood outer edge forming a roll towards the hood lining.



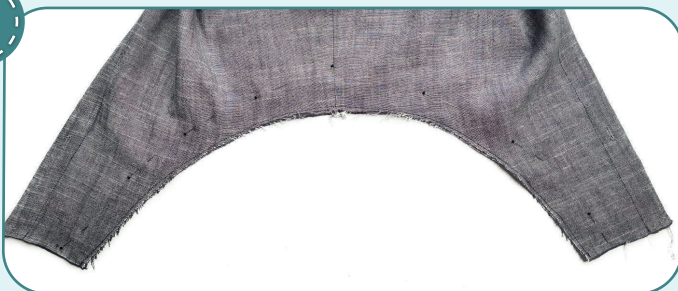
11



2,4-2,8

Topstitch the hood outer edge 25 mm (1") away from the edge. Press it.

12



2,4-2,8

Secure the hood and the hood lining 7 mm (1/4") away from the edge.

13



2,4-2,8

Overlap the left end of the hood with the right end. Place the hood outer edges 10 mm (3/8") away from the raw edges. For convenience, you can mark the seam allowances in the corners. Pin the hood ends. Secure them 7 mm (1/4") in from the edge.

14



Thread the flat draw cord into the hood. Tie the knots on the flat draw cord ends.

15



2,4-2,8

Fold the sleeve tab lengthways, right side inside. Stitch it along the perimeter 10 mm (3/8") in from the edge, leaving the short edge open.

16



Trim the seam allowances right at the corner points. Turn the sleeve tab out, smooth the corners and press.

17



2,4-2,8

Topstitch the sleeve tab along the perimeter 1 mm (1/16") in from the edge, except the open edge. Press it.

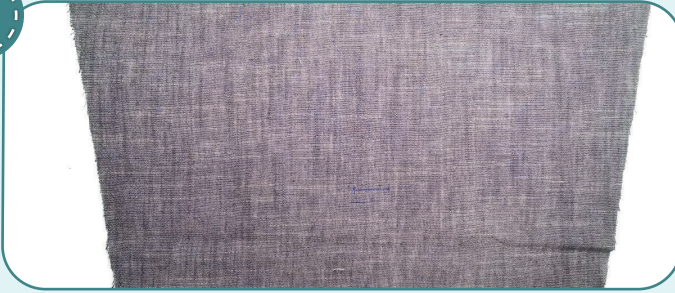
18



Transfer the marking for a buttonhole from the pattern onto the sleeve tab end. Use the buttonholing foot to sew the buttonhole to the size of the buttons you have prepared. Carefully cut the buttonhole with the seam ripper but avoid cutting the stitching threads. Press it with an iron.

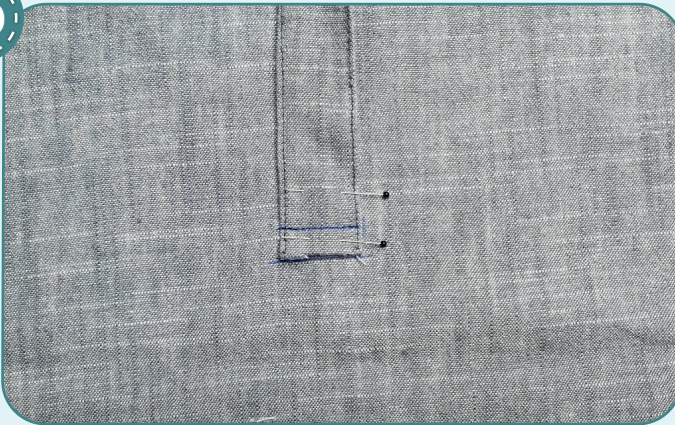


19



Transfer the marking line for attaching the sleeve tab from the pattern onto the sleeve wrong side. Draw a parallel line 10 mm (3/8") below the marking line. We will place the sleeve tab edge to it.

20



2,4-2,8

Place the sleeve tab right side (which you have chosen) to the sleeve wrong side. The sleeve tab open edge should match the bottom line, sharp corner pointing up. Mark the attaching line 10 mm (3/8") away from the edge. Stitch the sleeve tab. Press it down.

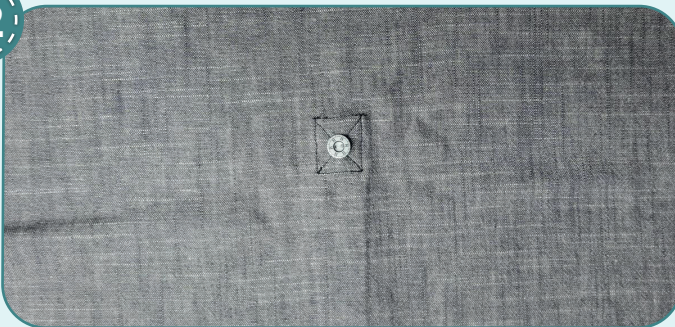
21



2,4-2,8

Transfer the sleeve tab topstitching lines from the pattern. Topstitch the rectangle along the perimeter and stitch an X inside. Press it.

22



Working on the sleeve right side, sew a button in the middle of the stitched rectangle. Repeat the process for the opposite sleeve tab (steps 15-22).

23



2,4-2,8

Pin the front and the back along the shoulder edges with right sides together. Stitch them 10 mm (3/8") in from the edge.

24



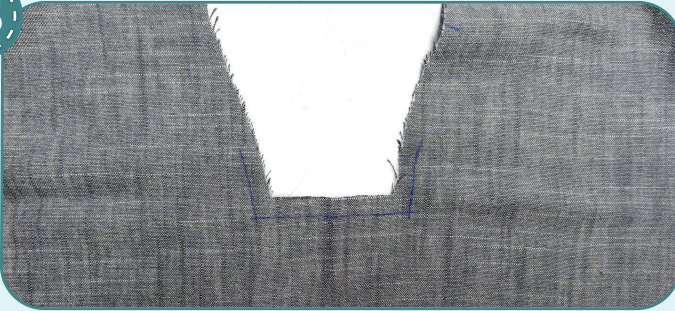
3

3-4

7

Finish the edges together with a 3-thread serger stitch. Press the seam allowances flat towards the front.

25



Working on the front piece wrong side, mark the seam allowances at the neckline bottom.

26



2,5-3

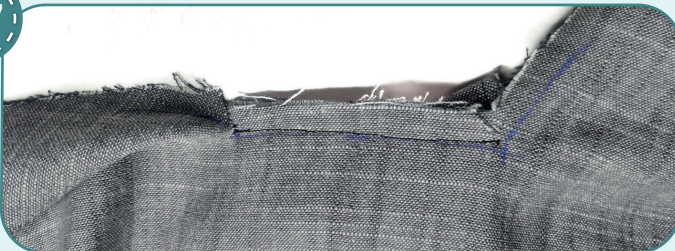
2,5-3

2,5-3

2,5-3

Pin the hood to the front neckline bottom. Note: you should draw lines for stitching at the corners, and accurately align the corner points. Stitch the hood lower edge in place 10 mm (3/8") in from the edge. Stitch from one corner to the other.

27



Slash into the neckline corners leaving 1 mm (1/16") before the stitching. Care not slash the hood pieces.

28



2-2,6

2-2,6

2-2,6

2-2,6

Pin the hood into the neckline, aligning the marks. Stitch the seam between the corners 10 mm away from the previous seam. The beginning and the end of the seam should match with the previous seam ends.

29



3

3-4

7

Finish the edges together in a circular way with a 3-thread serger stitch. Press the seam allowances towards the front and the back.



30



2,5-3

2,5-3

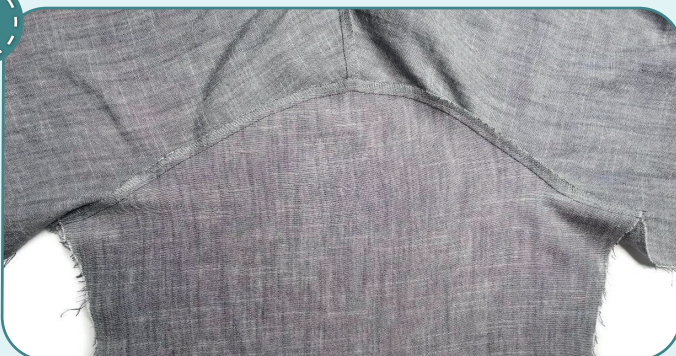
2,5-3

2,5-3

Pin the sleeve to the garment armscye with right sides together. Match the marks and the sleeve cap top mark with the shoulder seam. Pin or hand-baste along the sleeve cap. Stitch the sleeve into the armscye 10 mm (3/8") in from the

edge. Stitch in, working on the sleeve side, make sure that no folds are formed along the sleeve cap.

31



3

3-4

7

Finish the edges together with a 3-thread serger stitch. Press the seam allowances towards the front and the back.

32



2,5-3

2,5-3

2,5-3

2,5-3

Pin the front and the back and the sleeves along the side edges with right sides together. Stitch the pieces 10 mm (3/8") in from the edge.



33



3

3-4

7

Finish the edges together with a serger. Press the seam allowances towards the front. Repeat the process for the other sleeve. (steps 30-33).

NOTE: It is recommended to try it on, check the fit, length, and ease. When fitting, consider the lower hem width.

34



Press first 10 mm (3/8") and then 20 mm (13/16") of the shirt and sleeves lower hems towards the wrong side.

35



2

5-3

2,5-3

Pin or baste the garment and the sleeves lower hems. Topstitch the garment lower hem 20 mm (1 3/16") in from the edge. Press them.

36

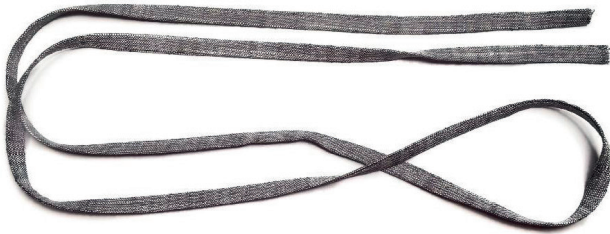


Remove the basting stitches, trim, and hide the thread tails and press the garment once again. The shirt is ready!

Pants construction



1



Repeat the process to make a flat draw cord (steps 1-3 of the shirt construction).

2



Press 10 mm ($\frac{3}{8}$ ") and then 30 mm ($1\frac{3}{16}$ ") of the back pocket top edge down to the wrong side.

3



Pin or baste the pocket top edge fold. Topstitch the pocket hem 30 mm ($1\frac{3}{16}$ ") away from the upper edge. Press it.

4



Stitch along the pocket curved edges 2-3 mm ($\frac{1}{16}$ - $\frac{1}{8}$ ") away from the edge. Set the stitch maximum length (4-5 mm), do not bar tack the seam ends and leave the thread tails at least 30 mm ($1\frac{3}{16}$ ").

PANTS CONSTRUCTION

5



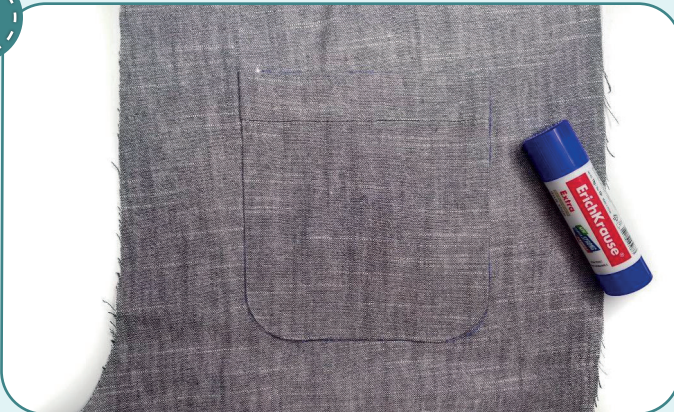
Cut the allowance on the pocket pattern to use it as a template. Press the pocket allowances along the straight folds using a template. Pull up the stitching in the curves to tighten the pocket around the template. Tie the thread tails. Press the pocket corners.

6



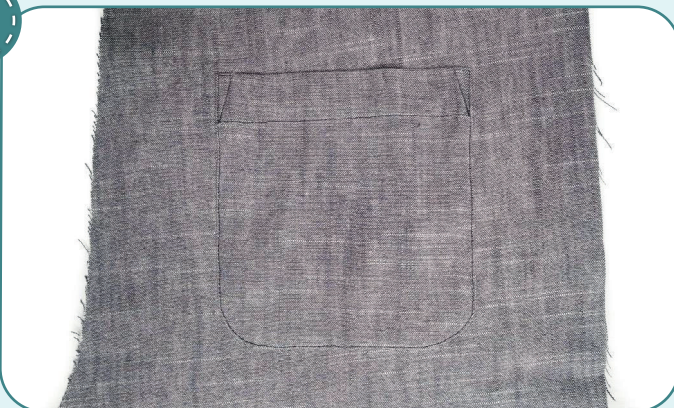
Transfer the marking for a pocket onto the right side of the pant right back piece using marking chalk or a heat erasable fabric marking pen.

7



Hand-baste, pin or glue with a glue-stick the pocket to the back of the right pant leg.

8



2,5-3

Stitch the pocket along the three sides 1 mm (1/16) in from the edge. Press it.



9



2,5-3

Pin the pocket lining along the pocket opening to the pants front with right sides together. Stitch the pieces 10 mm (3/8") in from the edge.

10



3-4



7

Finish the edges together with a serger. Turn the pocket out and press the pocket opening forming a roll towards the pocket lining.

11



2,5-3

Topstitch along the pocket opening 7 mm (1/4") in from the edge. Press the pocket opening again.

12



2,5-3

Press the pocket lining in half, aligning the marks and the lower edges. Pin the pocket lining lower edges. Stitch the pocket 10 mm (3/8") in from the edge. Press the pocket.



13



3

3-4

7

Finish the seam allowances with a serger. Press the pocket.

14



2,5-3

2,5-3

2,5-3

2,5-3

Secure the pocket bag above and below the pocket opening and along the top edge, stitching 7 mm (1/4") away from the edge. Repeat the process for the opposite pocket. (steps 9 -14).

15



2,5-3

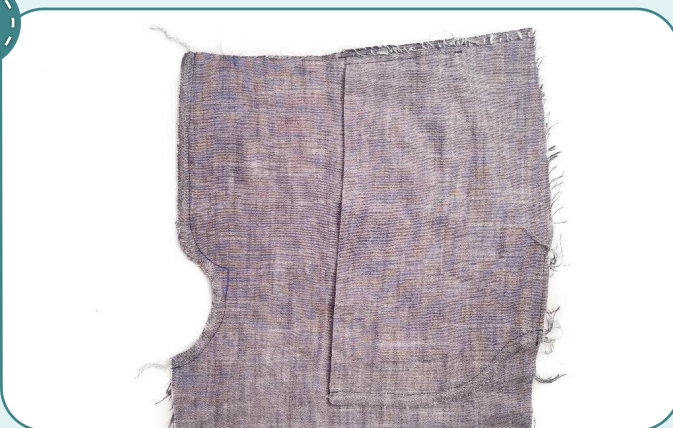
2,5-3

2,5-3

2,5-3

Pin the pants fronts along the crotch seam and the fly front with right sides together. Transfer the marking line from the paper pattern. Stitch the pieces along the line.

16



3

3-4

7

Finish the seam allowances together.

17



2,5-3

Secure the fly front along the upper edge 10 mm (3/8") in from the edge.

18



2,5-3

Press the fly front and the seam towards the pants left front piece. Pin it. Working on the wrong side, stitch the fly front along the previous seam. Press it.



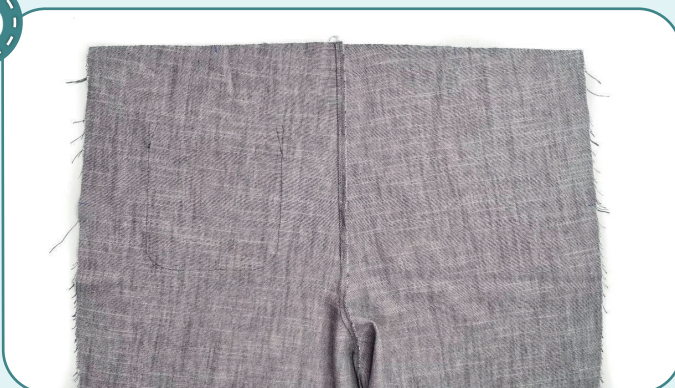
19



2,5-3

Pin the pants back pieces along the crotch edge with right sides together. Stitch the pieces with a straight stitch 10 mm (3/8") in from the edge.

20



3-4



7

Finish the seam allowances with a serger. Press the seam allowances towards the pants left back piece.

21



2,5-3

Pin the pants front and the pants back along the side seams and inseams. Stitch them 10 mm (3/8") in from the edge.

22



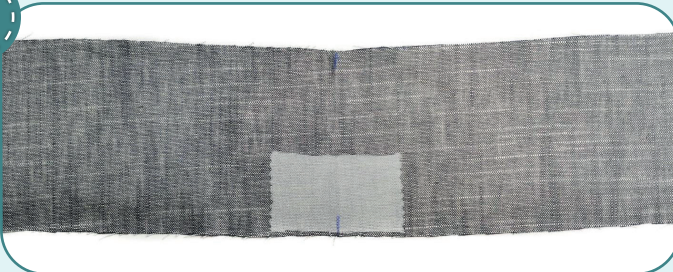
3-4



7

Finish the pant leg inseams and side seams with a serger. Press the inseam allowances towards the front and the side seam allowances towards the back.

23

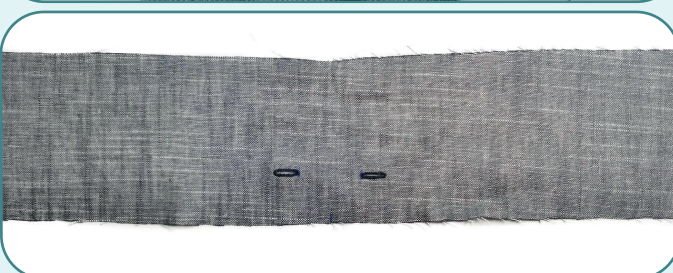


Fuse scrap of interfacing 35x80 mm (1 9/16"x3 1/8") to the area for the flat draw cord openings.

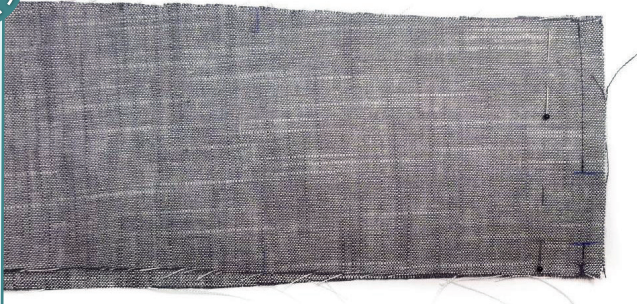
24



Use the buttonholing foot to sew buttonholes according to the size of the prepared cord openings but avoid cutting the stitching threads. Press it with an iron.



25



2,5-3

Place the pants waistband in half, with right side inside, and pin it along the short edges. Stitch the waistband in a ring with two straight seams 65 mm (2 9/16") and 15 mm (9/16") long, leaving an opening for the elastic. Press the seam allowances open.

26



Fold the waistband in half, wrong side inside, and press it.

27



2,5-3

With right sides together, pin the waistband to the pants upper edge, aligning the waistband seam with the pants back crotch seam, waistband center with the front crotch seam and the marks with the side seams. Stitch the pieces 10 mm (3/8") in from the edge.

28



3-4



7

Serge the seam allowances together. Press the seam allowances down.

29



Cut the elastic 45 mm (1 3/4") wide with the length, indicated on the waistband pattern. Thread it through the opening in the waistband with a safety pin or a bodkin.

30



2,5-3

Join the ends of the elastic band in a ring by a straight or a zig-zag stitch. Spread the elastic evenly around the waistband.

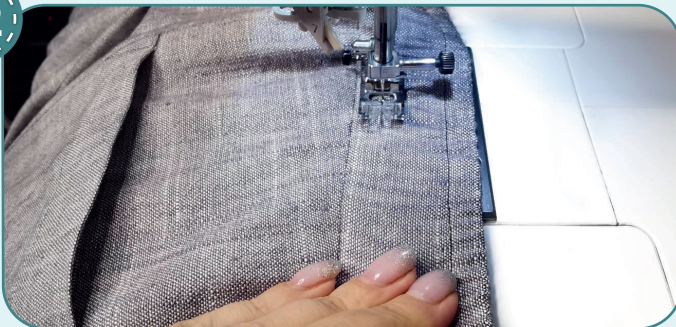
NOTE: It is recommended to try it on, check the fit, length, and ease. When trying the garment, consider the lower hem seam allowance width. Make sure, that the pants waistband is comfortable to wear. If need be, measure the length of the elastic.

31



Hand-baste the opening in the waistband with a blind stitch.

32



2,5-3

Stretching the elastic evenly, stitch 10 mm (3/8") away from the waistband fold. Stitch a parallel seam, 10 mm (3/8") away from the waistband attaching seam.



33



Press 10 mm (3/8") and then 20 mm (13/16") of the pant leg lower hems towards the wrong side.

34



2,5-3

Pin or baste the pant leg lower hems. Topstitch the pant leg lower hems 20 mm (1 3/16") in from the edge. Press them.

35



Insert the flat draw cord, remove the basting stitches, trim the thread tails, and press the garment once again. The pants are ready!

ELINA PATYKOVA

ПРО ШИТЬЕ

Summer suit Linen

Thank you for joining my team and me!
Share your works in instagram and my group in vkontakte. Hope you will stay with us for our next project!

