

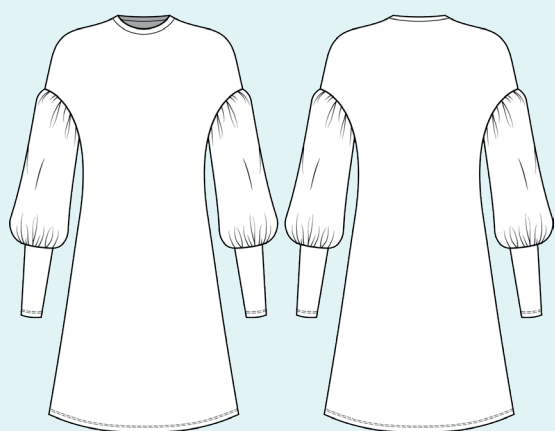
ELINA PATYKOVA

ПРО ШИТЬЕ

Instructions
for sewing

Baroque Dress

#платье_барокко



Skill level

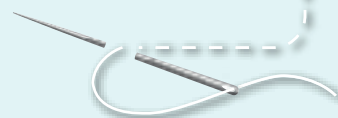


Materials and notions



- jersey,
- matching thread,
- Jersey 80-90 or Stretch 80-90 needles.

If you are not sure about the fit of the garment, it is recommended to sew a muslin with similar properties (elasticity, thickness, drape) first. This will allow you to adjust the length, width and fit of the garment and save time.



To find out how long a piece of fabric to take, you should place the pattern pieces onto the table, the floor or bedspread, pre-measured width equal to half the width of the selected fabric. Place the pieces, caring the direction of the grain line, their number, i.e., the way you will place them when cutting. Measure the length of the pattern pieces fit, add to this length 5% for the fabric shrinkage - this will be the required amount of fabric for the project.

The fabric must be prepared for sewing: washed in warm water, dried, and ironed.

Let us start the cutting. Print and glue all the paper patterns. When printing, do not forget to check the size of the test square.

Put the paper pattern pieces onto the fabric. It is important to check that the grain is straight. Pin the paper pattern pieces to the fabric gently and cut the fabric along the outline. Note: seam allowances are already included. Transfer all the necessary marks from the pattern onto the wrong side of your fabric.



Now you have



DRESS PIECES:

- 1.** back - cut 1 on the fold
- 2.** front - cut 1 on the fold
- 3.** sleeve - cut 2
- 4.** cuff - cut 2
- 5.** neckband - cut 1

Construction

Symbols



straight stitch



the stitch length in (mm)



flat lock stitch



zigzag stitch



the stitch width in (mm)



3-Step Zigzag Seam Finishing



unilateral zipper presser foot



universal presser foot



invisible zipper presser foot



pinning

You should lockstitch the seam and trim the thread tails or tie the seam thread tails and hide them into the seam after sewing a serger stitch or cover seaming chain stitch.



double welting (piping) presser foot



3-thread serger stitch



4-thread serger stitch

NOTE

A

4-thread serger stitch

If you do not have a serger, you can use stretch stitches available on your sewing machine, or at least, a zigzag stitch.

B

3-thread serger stitch

If you do not have a serger, you can replace it with an overedge stitch, or a zigzag stitch.

C

flat lock stitch

If you do not have a coverstitch machine, the flat seam can be performed with a) a twin needle on a sewing machine, b) decorative stretch seam on a sewing machine, c) finish the seams with serger and stitch them with a straight stitch.

Dress construction



1



4



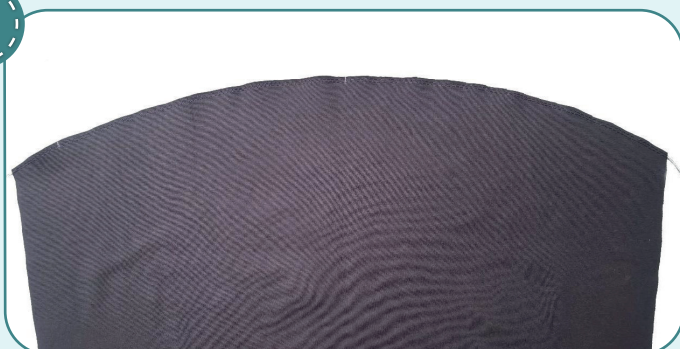
2,5-3,5



7

Pin the front and back along the shoulder edges with right sides together. Serge them. Press the seams flat towards the front.

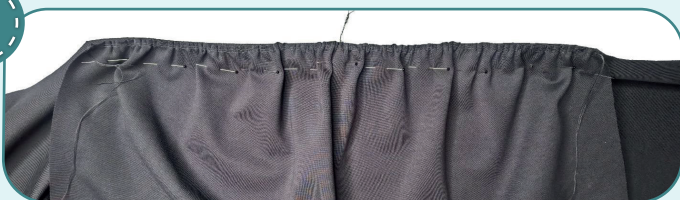
2



4-5

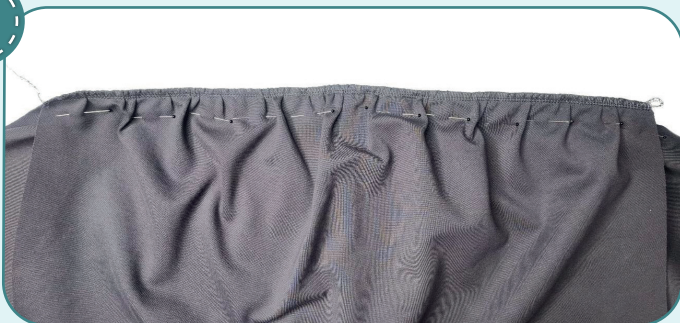
Stitch two parallel rows along the sleeve cap 4 and 6 mm (1/8 and 1/4") in from the edge. Set maximum stitch length at 4 - 5 mm, do not backstitch and leave the thread tails at least 50 mm (2") long at both sides of the seams.

3



Pin the sleeve into the armhole with right sides together. Align the sleeve cap top mark with the shoulder seam. Pull up the gathers to make the sleeve cap fit the armhole, using the thread tails of two rows along the sleeve cap. Tie the thread tails. Evenly spread the gathers along the sleeve cap. Pin or hand-baste them.

4



4



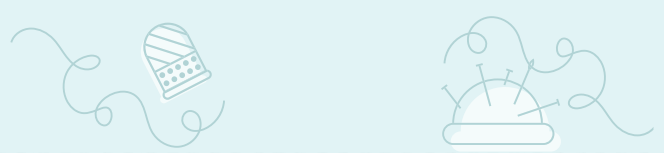
2,5-3,5



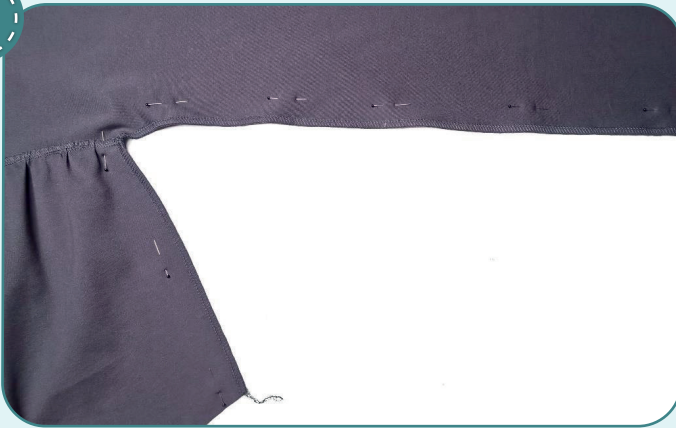
7

Serge the sleeve into the armhole. Stitch from the sleeve side. Press the seam allowances towards the front and the back. Repeat the process for the other sleeve (steps 2-4).





5



4



2,5-3,5



7

Pin the front with the back, and the sleeve along the side seam with right sides together. Serge the pieces. Place the sleeve attaching seam allowances in different directions to avoid bulk. Press the seam allowances towards the front. Repeat the process for the other side seam.

6



4-5

Stitch two parallel seams along the sleeve lower hem 4 and 6 mm (1/8 and 1/4") in from the edge. Set maximum stitch length at 4 - 5 mm, do not backstitch and leave the thread tails at least 50 mm (2") long at both sides of the seams.

7



4



2,5-3,5



7

With right sides together, fold the cuff in half and pin along the short edges. Serge it. Press the seam allowances towards the back.

NOTE: it is recommended to try the cuff on and check its width and comfort.

8



Pin the cuff to the sleeve lower hem with right sides together. Align the side seams. Pull up the needle thread tails and make the sleeve opening fit the cuff. Tie the thread tails. Evenly spread the gathers.

9



4

2,5-3,5

7

Serge the cuff to the sleeve. Stitch from the cuff side. Press the seam allowance upwards. Repeat the process for the other cuff (steps 6-9).



NOTE: it is recommended to try the garment on, check the fit, length and ease. When fitting the garment, consider the lower hem width of the dress and the sleeves.

10



2

2-2,5

7

Stitch the neckband in a ring 7 mm (1/4") in from the edge, having pinned the short edges beforehand. Press the seam open.

11



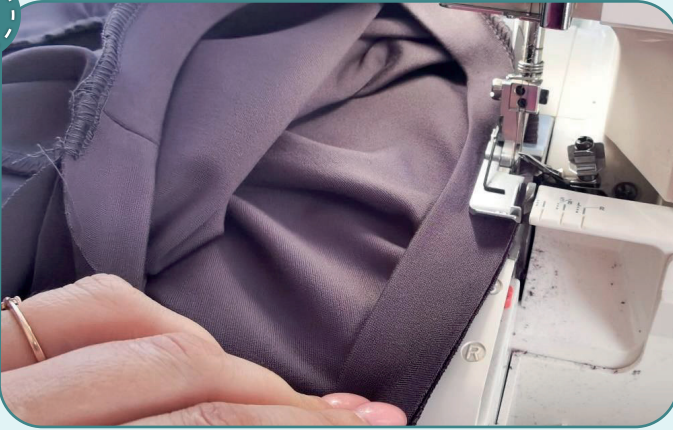
With wrong sides together, fold the neckband in half lengthways and press it. At the same time, shape the neckline with an iron, slightly stretching the raw edges and ironing the fold. For convenience, the neckband can be pinned at the marked places.

12



Pin the neckband to the garment neckline right side. Align the neckband seam with one of the shoulder seams. Align another marks with the other shoulder seam and the back and front center marks.

13

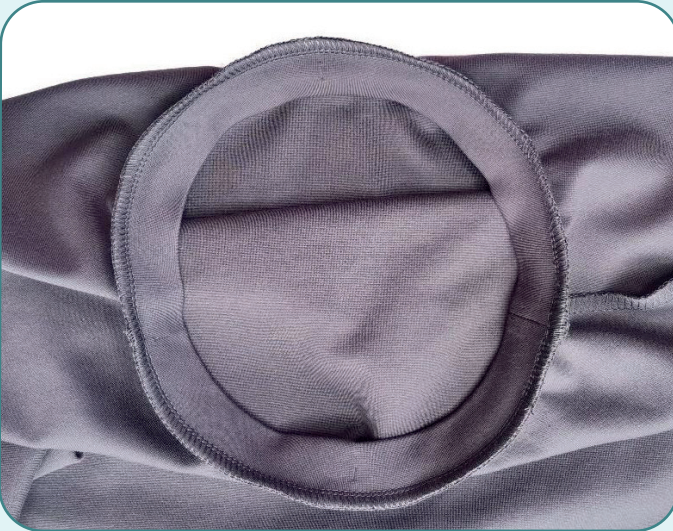


4

2,5-3,5

7

Serge the neckband to the garment. While serging, stretch the neckband evenly, but avoid stretching the neckline itself.



14



Press the neckband attaching seam allowances towards the back and the front. Iron the neckband giving it a nice shape.

15



2,5-3

5,6

Fold the garment lower hem 20 mm (13/16") towards the wrong side and press it. You can hand-baste the edge. Coverstitch the lower hems. Tie the thread tails on the wrong side and hide them into the seam. Iron the garment.



16



Remove the besting stitches, trim the thread tails and hide them into the seam. The dress is ready!



ELINA PATYKOVA

ПРО ШИТЬЕ

Baroque Dress

Thank you for joining my
team and me!
Share your works in my
groups. Hope you will stay
with us for our next project!

