

ELINA PATYKOVA

ПРО ШИТЬЕ

Instructions  
for sewing

## Jacket Quilt

#куртка\_quilt



Skill level



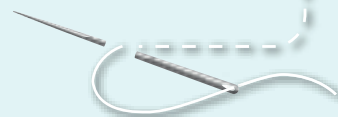
## Materials and notions



- quilted jacket fabric
- lining fabric
- 9 snap buttons Alfa 15 mm (9/16")
- matching thread
- Microtex 70 needles

If you are not sure about the fit of the garment, it is recommended to sew a muslin with similar properties (elasticity, thickness, drape) first. This will allow

you to adjust the length, width and fit of the garment and save time.

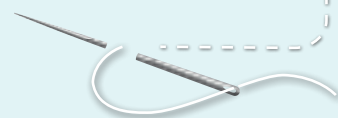


To find out how long a piece of fabric to take, you should place the pattern pieces onto the table, the floor or bedspread, pre-measured width equal to half the width of the selected fabric. Place the pieces, caring the direction of the grain line, their number, i.e., the way you will place them when cutting. Measure the length of the pattern pieces fit, add to this length 5% for the fabric shrinkage - this will be the required amount of fabric for the project.

Let's start the cutting. Print and glue all the paper patterns. When printing, do not forget to check the size of the test square.

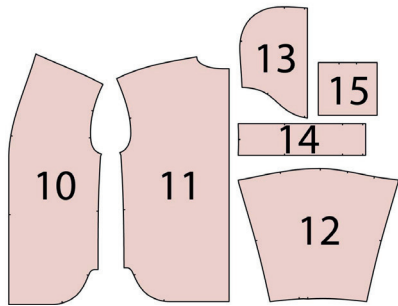
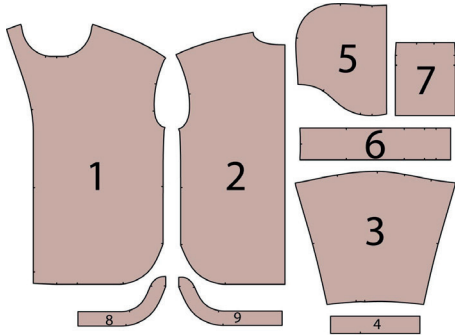
To sew the jacket, you can use a quilted jacket fabric, or quilt the jacket fabric with insulation yourself. This garment is sewn from quilted jacket fabric with a diamond pattern. Put the paper pattern

pieces onto the fabric. It's important to check that the grain is straight. It is better to cut each piece from quilted fabric separately to get symmetrical quilted lines on the opposite pieces. First cut one piece, then place it on the fabric with right sides together aligning the quilted lines and then cut the opposite piece. Place the back with its center at the diamond tops. Place the front center line (the line with marks for snap buttons on it) at the diamond tops. Place the back side edge to the front side edge and place the front pieces in height so that the diamond tops were at the same level. Match the quilted lines on the pocket with corresponding lines on the front piece (there is a detailed description below). Note: seam allowances are already included. Transfer all the necessary marks from the pattern onto the wrong side of your fabric.



## Now you have

### JACKET PIECES:



- 1. front** - cut 2 (quilted jacket fabric)
- 2. back** - cut 1 on the fold (quilted jacket fabric)
- 3. sleeve** - cut 2 (quilted jacket fabric)
- 4. cuff** - cut 2 on the fold (quilted jacket fabric)
- 5. hood** - cut 2 (quilted jacket fabric)
- 6. hood center** - cut 1 (quilted jacket fabric)
- 7. pocket** - cut 2 (quilted jacket fabric)
- 8. front lower hem facing** - cut 2 (quilted jacket fabric)
- 9. back lower hem facing** - cut 2 (quilted jacket fabric)
- 10. front lining** - cut 2 (lining fabric)
- 11. back lining** - cut 1 on the fold (lining fabric)
- 12. sleeve lining** - cut 2 (lining fabric)
- 13. hood lining** - cut 2 (lining fabric)
- 14. hood center lining** - cut 1 (lining fabric)
- 15. pocket lining** - cut 2 (lining fabric)

**NOTE:** if the fabric frays easily, you can use pinking shears for cutting.

## Construction

# Symbols



straight stitch



the stitch length in (mm)



flat lock stitch



zigzag stitch



the stitch width in (mm)



3-Step Zigzag Seam Finishing



unilateral zipper presser foot



universal presser foot



invisible zipper presser foot



**pinning**

You should lockstitch the seam and trim the thread tails or tie the seam thread tails and hide them into the seam after sewing a serger stitch or cover seaming chain stitch.



double welting (piping) presser foot



3-thread serger stitch



4-thread serger stitch

## NOTE

**A**

### **4-thread serger stitch**

If you do not have a serger, you can use stretch stitches available on your sewing machine, or at least, a zigzag stitch.

**B**

### **3-thread serger stitch**

If you do not have a serger, you can replace it with an overedge stitch, or a zigzag stitch.

**C**

### **flat lock stitch**

If you do not have a coverstitch machine, the flat seam can be performed with a) a twin needle on a sewing machine, b) decorative stretch seam on a sewing machine, c) finish the seams with serger and stitch them with a straight stitch.

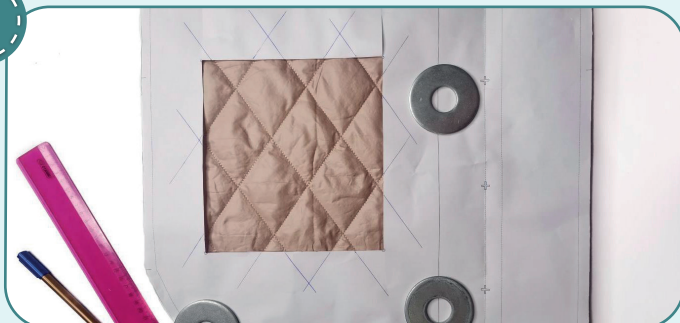




# Jacket construction

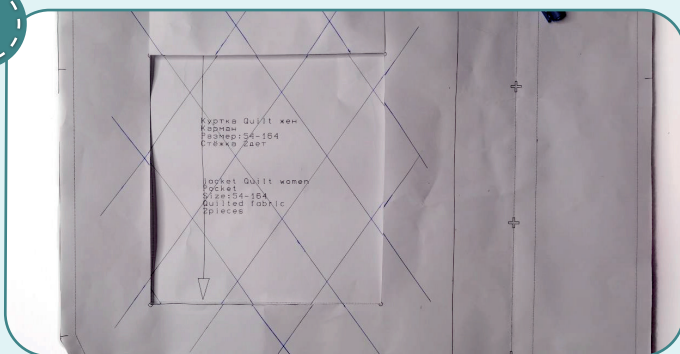


1



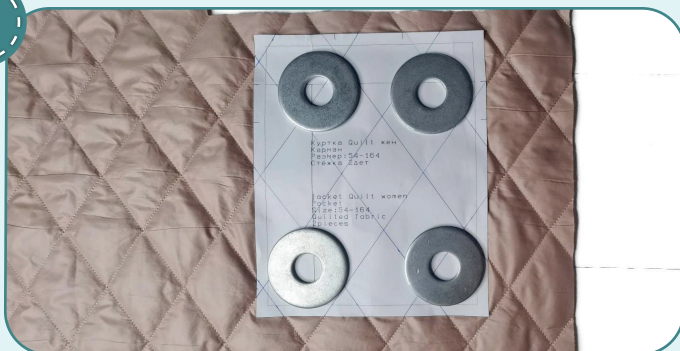
When cutting the front pieces, cut the pocket out of the paper pattern. Accurately place the pattern on the front piece. Using a pen, continue the quilting lines from the front piece onto the paper pattern.

2



Place the pocket pattern under the front pattern. Note: the pocket pattern is slightly larger than the frame cut out, so place it in the way that the seam line was at the same distance. Connect the stitching lines on the front piece with a pen and a ruler. Then extend these lines to the pocket pattern edges.

3



Place the pocket pattern on the quilted fabric, aligning the lines. The second pocket is cut mirror to the first one.

4



2,5-3

Quilt the outline of all the pieces with straight stitching 3-4 mm (1/8") in from the edge.





5



2,5-3

With right sides together, pin the pocket and the pocket lining along the top edge. Stitch them 10 mm (3/8") in from the edge. Leave an opening between the marks to turn the pocket out. Press the seam allowances towards the lining.

**NOTE:** All WTO (wet-thermal processing) steps should be done through a cotton pressing cloth. Select the temperature mode using a scrap of the fabric. Iron slightly not to flatten the insulation.

6



2,5-3

Fold the pocket along the top fold line with right side inside. Align the pocket and the pocket lining along the bottom and side edges. The pocket lining should be a little taut. Stitch them 10 mm (3/8") in from the edge.

**NOTE:** If you lack experience, it is better to hand-baste first.

7



Trim the corners close to the stitching.







8



Turn the pocket to the right side, smooth the corners, and, working from the wrong side, press the pocket, forming a roll towards the lining.

9



Hand-baste the opening with a blind stitch. Repeat the process for the opposite pocket (steps 5-9).

10



Transfer the marking for the pocket onto the front right side.

11



Pin or hand-baste the pocket to the front aligning the quilted lines. Topstitch the pocket 1 mm (1/16") away from the edge. Repeat the process for the opposite pocket.

12



2,5-3

Pin the back and the fronts along the shoulder edges. Stitch them 10 mm (3/8") in from the edge.

13



2,5-3

Pin the sleeve to the armscye, with right sides together. Align the marks, and the sleeve top mark with the shoulder seam. Place the shoulder seam allowances in different directions. Pin or hand-baste along the sleeve cap. Stitch the sleeve in the armscye 10 mm (3/8") in from the

edge. Stitch from the sleeve side, caring that no folds are formed along the sleeve. Repeat the process for the other sleeve.

14



2,5-3

Pin the back with the front, and the sleeve along the side edges with right sides together. Align the sleeve attaching seams, placing their allowances in different directions. Stitch the pieces 10 mm (3/8") in from the edge. Finish stitching at the lower marks level. Notch the seam allowance under the arm, but

do not cut the stitching. Repeat the process for the opposite side seam.

**NOTE:** It is recommended to try it on, check the fit, length, and ease. When fitting, consider the lower hem width, and one-piece front facing.

15



2,5-3

With right sides together, pin the hood and the hood center aligning the marks. Stitch the pieces 10 mm (3/8") in from the edge. Repeat the process for the hood opposite piece.



16



2,5-3

Repeat the process for the hood lining (step 15). Press the seam allowances towards the hood center piece.

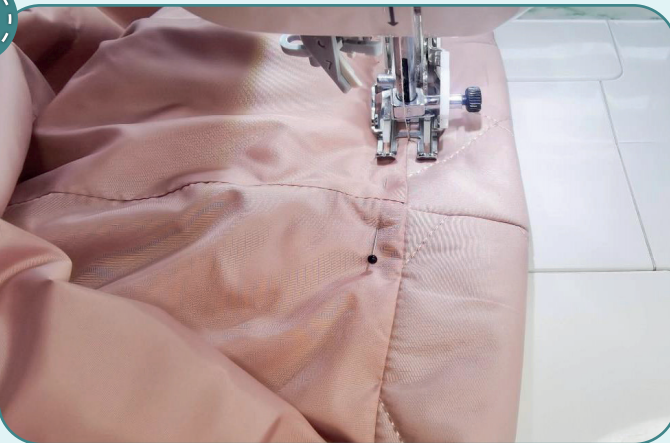
17



2,5-3

With right sides together, insert the hood lining into the hood and pin them along the outer edge. Stitch the pieces 10 mm (3/8") in from the edge. Press the seam allowances towards the hood lining.

18



2,5-3

Tuck the hood edge inward along the transferred marking line and pin it. There should be 40 mm (1 9/16") between the fold and the hood lining. Working from the wrong side, stitch 40 mm (1 9/16") away from the fold. The needle should get right at the lining attaching seam. Press it.



19



2,5-3

Pin the hood and the hood lining along the lower edge. The hood lining edge should be 4-5 mm (3/16") out from under the hood. Secure the hood lining 3-4 mm (1/8") in from the edge. Trim the excess fabric from the hood lining.

20



2,5-3

Pin the hood into the garment neckline with right sides together aligning the marks. The hood edges should match the one-piece front facing fold marks. Stitch the hood 10 mm (3/8") in from the edge.

21



2,5-3

Fold the cuff in half, lengthways, with right side inside. Stitch along the short edges 10 mm (3/8") in from the edge.

22



Trim the corners close to the stitching. Turn the cuff out. Press it slightly.

23

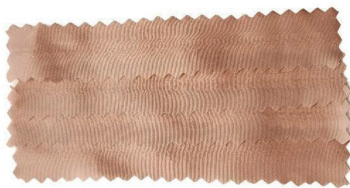


2,5-3

Pin the cuff to the sleeve lower hem right side. Match the cuff short edges with the marks on the sleeve and match the mark on the cuff with the sleeve side seam. Stitch the cuff 10 mm (3/8") in from the edge.



24



Cut 4 strips of lining fabric about 80 mm (3 1/8") long and 15 mm (9/16") wide to make swing tacks.

25



Stitch the swing tacks to the armhole seam allowances in underarm and shoulder seam.

26



Cut a strip of the lining fabric without insulation 40 mm (1 9/16") wide and 110 mm (4 3/8") long to make a loop.

27



Double tuck the strip edges and press or hand-baste it.

28



Stitch the strip 1 mm (1/16") in from the edge. Press it.

29



Pin the prepared loop strip to the lining neckline back center from the right side. Stitch the loop strip 7 mm (1/4") in from the edge.

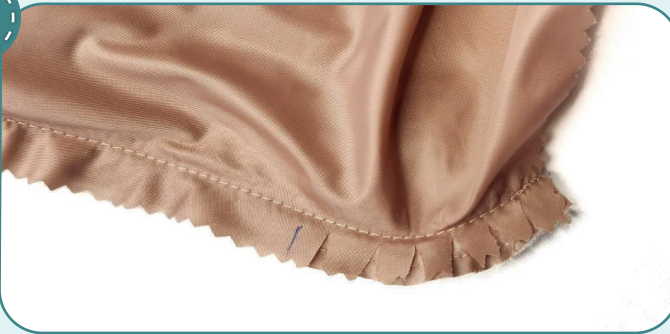
30



2,5-3

Place the front lower hem facing and the front lining with right sides together aligning the marks. Hand-baste the pieces. To make it easier to hand-baste, make notches along the lining curved edge at 5 mm (2"). Stitch the pieces 10 mm (3/8") in from the edge.

31



Extend the notches on the lining seam allowances, stopping 1 mm (1/16") before the stitching. Press the seams flat towards the lining.

32



2,5-3

Repeat the process for attaching the front lower hem facings to the front facing (steps 30-31).

33



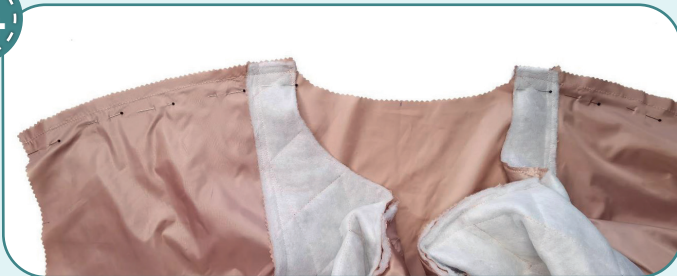
2,5-3

Pin the front and the front lining with right sides together. Stitch the pieces 10 mm (3/8") in from the edge. Repeat the process for the other front lining. Press the seam allowances towards the lining. Notch the seam allowances 10 mm (3/8")

above the facing, to press out the seam allowances easier at the facing area.



34



2,5-3

Pin the back lining and the front linings along the shoulder edges. Stitch the pieces 10 mm (3/8") in from the edge. Press the seam allowances towards the back.

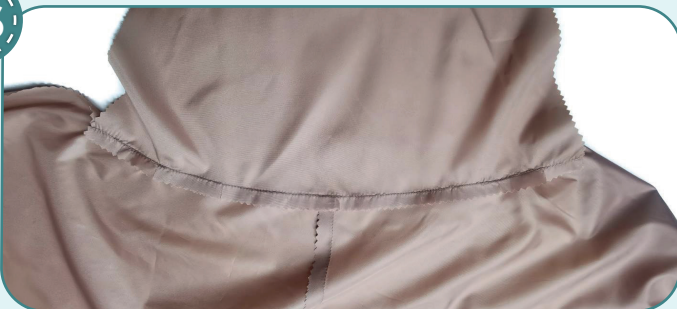
35



2,5-3

edge. Stitch from the sleeve side, caring that no folds are formed along the sleeve cap.

36



Notch the sleeve attaching seam allowances every 20-30 mm (13/16-1 3/16") 1 mm (1/16") before the seam. Press the seam allowances towards the front and the back. Repeat the process for the other sleeve (steps 35-36).

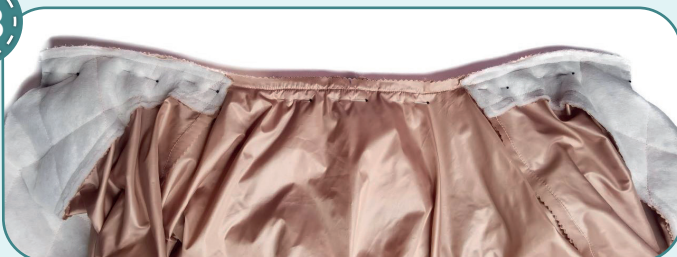
37



2,5-3

Pin the back lining with the front linings and the sleeve lining along the side edges with right sides together. Stitch the pieces 10 mm (3/8") in from the edge. Leave an opening in one sleeve about 120 mm (4 3/4") to turn the garment out. Finish stitching at the lower marks level. Notch the seam allowance under the arm, but do not cut the stitching. Press the seam allowances open.

38



2,5-3

Pin the lining neckline seam allowances and the garment neckline seam allowances, bending the facings along the hood edges. Stitch the pieces 10 mm (3/8") in from the edge. Working from the garment top layer, stitch exactly along the hood attaching seam.

39



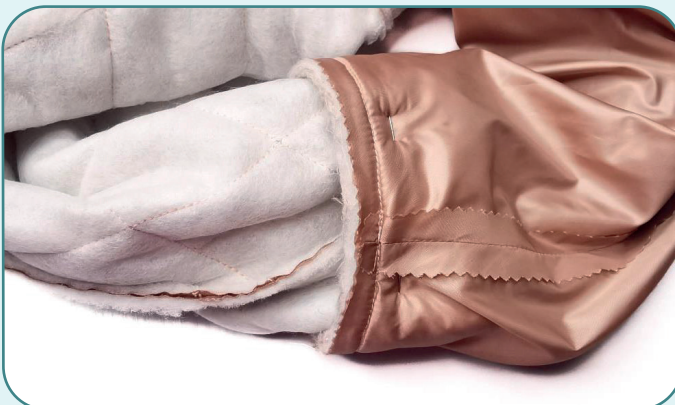
Notch the seam allowances along the neckline every 15 mm (9/16"), 1 mm (1/16") before the stitching.

40



2,5-3

Insert the sleeve lining into the sleeve in the way it will be in the finished garment. Align the sleeve seam with the sleeve lining seam. Turn the sleeve and the sleeve lining out together (but do not shift the sleeve lower hems and the sleeve lining) and place them between the jacket and its lining (inside the garment). Hand-baste the sleeve to the lining along the lower hem line with right sides together, inserting the lining into the sleeve. Working from the seam side, stitch them 10 mm in from the edge, to coincide the seam with the cuff attaching seam. Repeat the process for the other sleeve.



41



2,5-3

the back lower hem with different stitches. The stitches ends must exactly match the side seam ends.

Turn the jacket out to the wrong side. Pin the garment lower hem and the garment lining lower hem with right sides together. Stitch them 10 mm (3/8") in from the edge. Stitch the front lower hem and

42

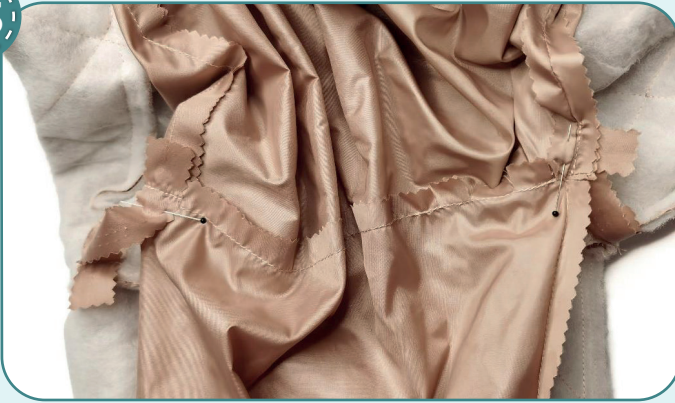


Notch along the curved edges every 10 mm (3/8"), stopping 1 mm (1/16") before the stitching. Trim the seam allowance corners.





43



2,5-3

Stitch the swing tacks to the armhole seam allowances under arms and at shoulder seams. Turn the garment out to the right side.

44



Sew the opening with a blind stitch.

45



Transfer the marking for the snap buttons to the front right side. First punch 2 mm (1/16") holes for the snap buttons on the right front piece with a hole punch (or cut them with scissors). Pin the right front above the left front, aligning the quilted lines and the upper and lower edges. Using a pen, transfer the marking for the snap buttons through the holes onto the left front. Punch the holes on the left front. Attach the snap buttons with

a press. Then attach snap buttons to the cuffs. Place the farther from the seam cuff edge atop.

**NOTE:** if you are sewing a jacket for boys, then attach the snap buttons with the left front overlapping the right front in the ready buttoned garment.

If there are no buttons of a suitable color, you can cover the button caps with a top layer of the quilted fabric.



46



Remove the basting stitches and trim the thread tails. The jacket is ready!



ELINA PATYKOVA

ПРО ШИТЬЕ

## Jacket Quilt

Thank you for joining my  
team and me!  
Share your works in my  
groups. Hope you will stay  
with us for our next project!

