

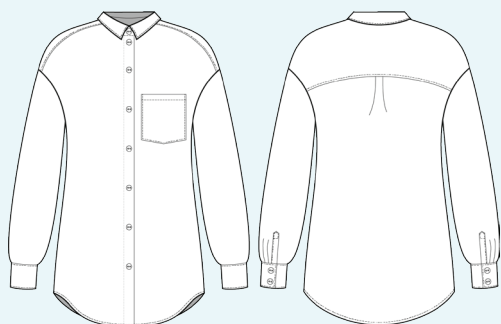
ELINA PATYKOVA

ПРО ШИТЬЕ

Instructions
for sewing

Shirt Fame

#рубашка_fame



Skill level



Materials and notions



- cotton fabric
- woven interfacing
- buttons 11-13 mm (1/2") 12 pcs.
- matching thread
- Universal 80-90 needles

If you are not sure about the fit of the garment, it is recommended to sew a muslin with similar properties (elasticity, thickness, drape) first. This will allow

you to adjust the length, width and fit of the garment and save time.



To find out how long a piece of fabric to take, you should place the pattern pieces onto the table, the floor or bedspread, pre-measured width equal to half the width of the selected fabric. Place the pieces, caring the direction of the grain line, their number, i.e., the way you will place them when cutting. Measure the length of the pattern pieces fit, add to this length 5% for the fabric shrinkage - this will be the required amount of fabric for the project. Before beginning your sewing project, wash the fabric in warm water, dry and iron it.

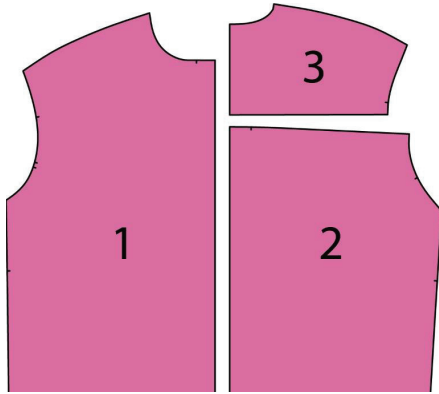
Cutting: Print and glue all the paper patterns. When printing, do not forget to check the size of the test square.

Put the paper pattern pieces onto the fabric. It's important to check that the grain is straight. Pin the paper pattern pieces to the fabric gently and cut the fabric along them. Note: seam allowances are already included. Transfer all the marks from the pattern onto the wrong side of your fabric.

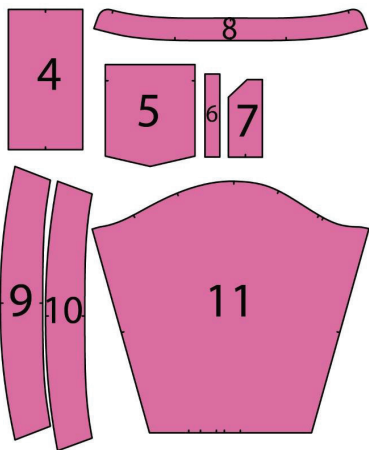


Now you have

SHIRT PIECES:

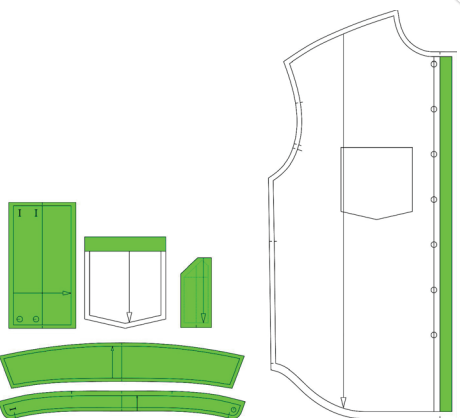


1. front - cut 2
2. back - cut 1 on the fold
3. back yoke - cut 2 on the fold
4. cuff - cut 2
5. pocket - cut 1
6. underlap placket - cut 2
7. sleeve placket - cut 2
8. collar stand - cut 2
9. under collar - cut 1
10. upper collar - cut 1
11. sleeve - cut 2



PIECES TO INTERFACE:

- Green - fusible interfacing
 - cuffs
 - sleeve plackets
 - collar stand
 - upper collar
 - pocket top allowance
 - front plackets



Construction

Symbols



straight stitch



the stitch length in (mm)



flat lock stitch



zigzag stitch



the stitch width in (mm)



3-Step Zigzag Seam Finishing



unilateral zipper presser foot



universal presser foot



invisible zipper presser foot



pinning

You should lockstitch the seam and trim the thread tails or tie the seam thread tails and hide them into the seam after sewing a serger stitch or cover seaming chain stitch.



double welting (piping) presser foot



3-thread serger stitch



4-thread serger stitch

NOTE

A

4-thread serger stitch

If you do not have a serger, you can use stretch stitches available on your sewing machine, or at least, a zigzag stitch.

B

3-thread serger stitch

If you do not have a serger, you can replace it with an overedge stitch, or a zigzag stitch.

C

flat lock stitch

If you do not have a coverstitch machine, the flat seam can be performed with a) a twin needle on a sewing machine, b) decorative stretch seam on a sewing machine, c) finish the seams with serger and stitch them with a straight stitch.



Shirt construction



1



Apply interfacing to the cuffs, sleeve plackets, collar stand, upper collar, pocket top allowance and front plackets.

2



3



4



7

Finish the pocket top edge with a serger. Iron it and then press the top seam allowance towards the wrong side.

NOTE: If you lack experience it is better to hand-baste first.

3



2,5-3

Fold the top of the pocket to the right side. Stitch it along the side edges 10 mm (3/8") in from the edge.

4



Remove surplus fabric at the points. Trim the pocket top seam allowance up to 3 mm (1/8").



5



Turn the pocket out to the right side, smooth the corners and press it. Trim the seam allowances from the pocket paper pattern to use it as a template. Use a template to press the seam allowances along the straight folds.

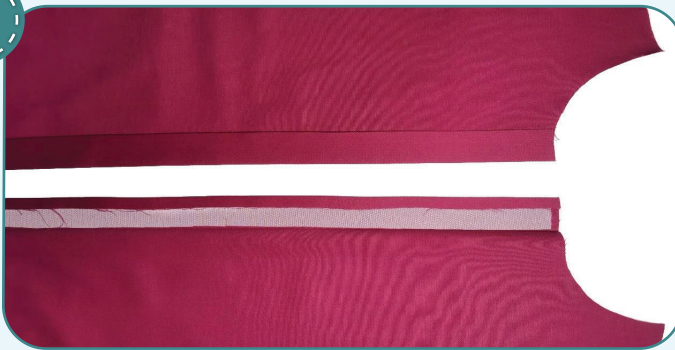
6



2,5-3

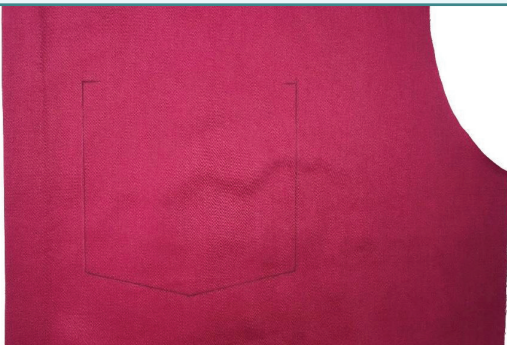
Topstitch the pocket along the top edge 25 mm (1") away from the fold. Press it.

7



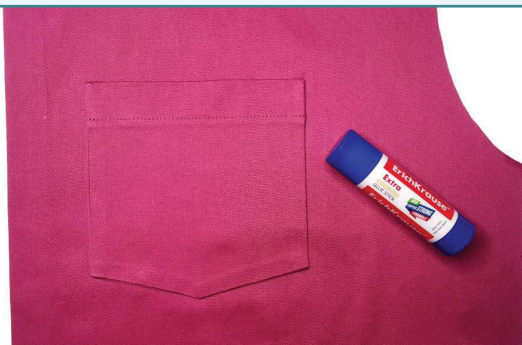
Press the front plackets to the wrong side along the marking: first at 10 mm (3/8"), and then at 25 mm (1").

8



Transfer the marking for the pocket onto the front right side.

9



Pin, baste or glue with a glue-stick the pocket wrong side to the front right side focusing on the marking.



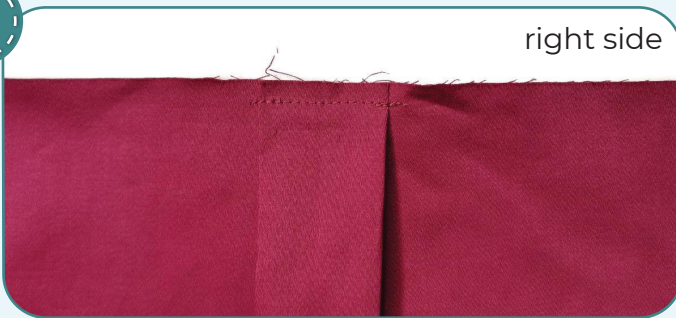
10



2,5-3

Topstitch the pocket along the side and bottom edges 1 mm (1/16") away from the edge. Press the pocket.

11



right side



2,5-3

Make a center box pleat at the back center (these pleats look into opposite directions). Stitch it 7 mm (1/4") in from the edge.



wrong side

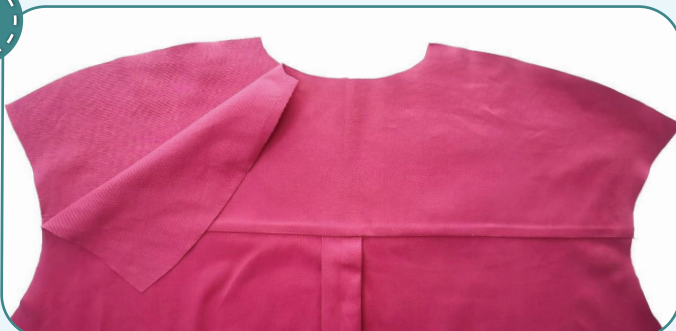
12



2,5-3

Place the back yoke pieces with right sides together. Sandwich the back piece between them, align the yoke lower hems and the back upper edge. Stitch them in place 10 mm (3/8") in from the edge.

13



Press both yokes upwards.

14



Place the back with right side facing up. Pin the upper yoke and the fronts along the shoulder edges with right sides together.

15



Roll up the back and the fronts to place them onto the upper yoke. Place the under yoke downwards.

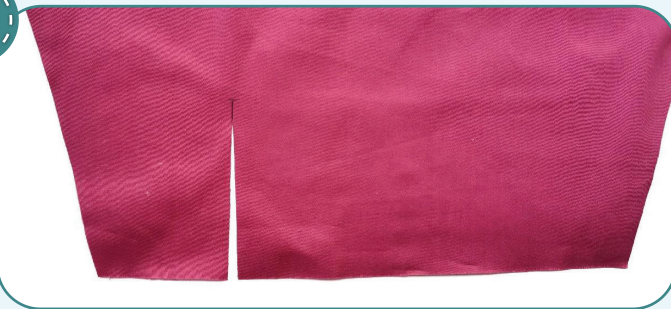
16



Pin the yokes shoulder edges with right sides together placing the fronts between them. The back and the fronts should be inside, between the yokes. Stitch the shoulder edges 10 mm (3/8") in from

the edge. Turn the garment out through one of the armholes. Press the seams. You can topstitch the yokes.

17



Transfer the marking for the sleeve split from the paper pattern onto the sleeve right side. Cut the sleeve along the split line leaving 10 mm (3/8") before the split top point.

18



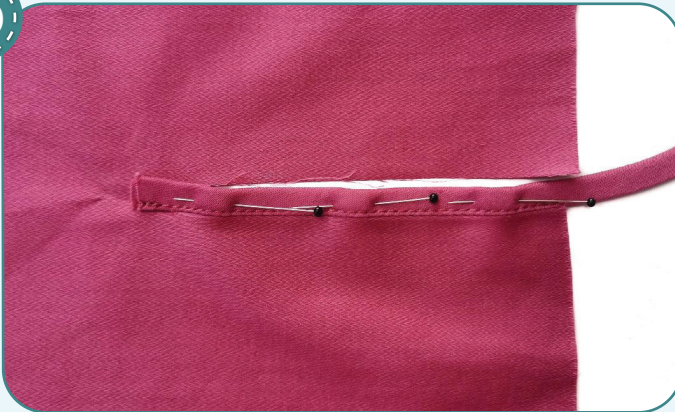
Coincide the underlap placket piece with the closer to the sleeve side seam split side. Pin the pieces with right sides together. Place the underlap placket piece 10 mm (3/8") above the split edge. Stitch it in place 5 mm (3/16") in from the edge. Start stitching at the split top point level.

19



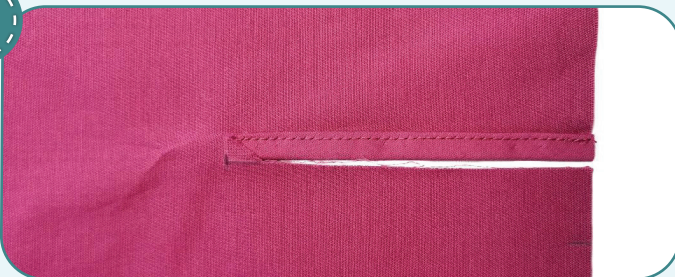
Slash diagonally the seam allowance 1 mm (1/16") before the underlap piece attaching seam end. Press the seam allowances towards the underlap piece.

20



Wrap the underlap piece, edge turned under, to the wrong side around the seam allowance. Hand-baste with small stitches in small stitches so that the underlaps piece covers the stitching. Press it. Sew it on the right side 1 mm (1/16") in from the edge. Make sure that the underlap placket is stitched evenly on both sides.

21



Remove the basting stitches and press. Trim the excess underlap piece fabric.

22



Trim the seam allowances from the sleeve placket paper pattern to use it as a template. Press along the placket straight folds using the template.

23



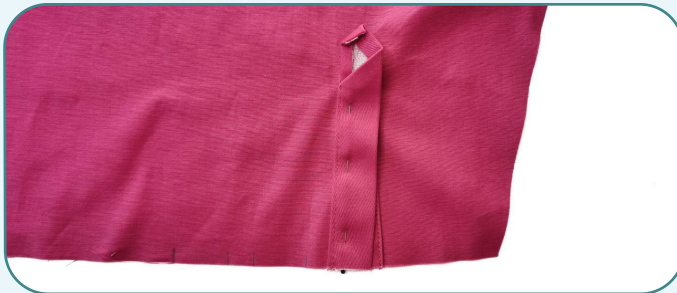
Pin the overlap placket to the split other side right sides together. Sew on the overlap placket, stitching exactly along the pressed fold. Finish stitching at the split top point level. Press the seam allowances towards the underlap piece.

24



Slash diagonally the seam allowance leaving 1 mm (1/16") before the overlap placket attaching seam end.

25



2,5-3

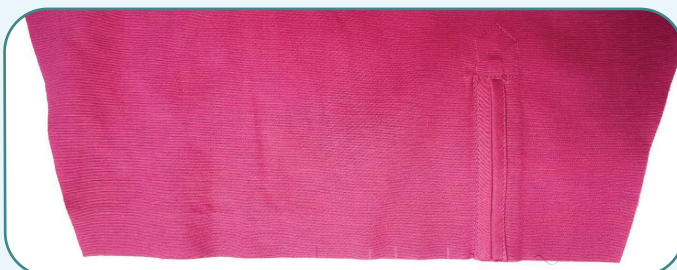
Baste the overlap placket short side edge making sure that its edge covers the seam. Stitch a straight seam line 1 mm (1/16") away from the seam. Make sure that the placket is stitched on the wrong side as evenly as on the right side. Press it.

26



Press the corner seam allowance above the split upward, towards the sleeve right side.

27



2,5-3

Pull the end of the underlap placket to the right side. Secure the sleeve placket, basting or pinning it, having made the split lower edges at one level beforehand. Topstitch the placket top along the outline. Make sure the split edge got into the seam from the wrong side (you can draw marking beforehand). Press the sleeve split.

28



2,5-3

Fold the pleats in the direction of the sleeve opening according to the marks, transferred from the pattern, with pleats facing the sleeve split. Pin them and then stitch 7 mm (1/4") in from the edge to secure. Repeat the process for the other sleeve (steps 17-28).

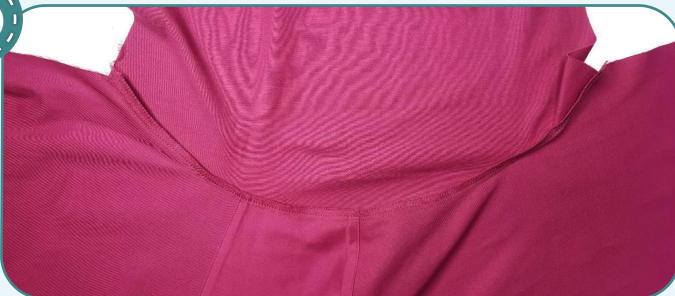
29



2,5-3

Pin the sleeve to the garment armhole with right sides together. Align the corresponding marks and the shoulder point with the shoulder seam. Pin or baste along the sleeve cap. Stitch the sleeve into the armhole 10 mm (3/8") in from the edge. Stitch from the sleeve side, making sure that no creases are formed along the sleeve cap.

30



4



7

Finish the edges with a 3-thread serger stitch. Press the seam allowances towards the sleeve.

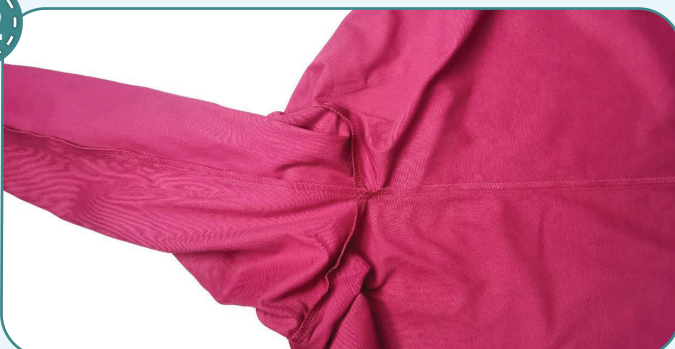
31



2,5-3

Pin the front with the back and the sleeve along the side edges with right sides together. Stitch the pieces 10 mm (3/8") in from the edge.

32



4



7

Finish the edges together with a serger. Press the seam allowances towards the front. Repeat the process for the other sleeve.

NOTE: It is recommended to try it on, check the fit, length and ease. When fitting, consider the lower hem fold width and the cuff width.

33



1,5

Pin the upper and under collars with right sides together. Stitch them 10 mm (3/8") in from the edge.

34



Trim the upper collar seam allowances to 4-5 mm (3/16"). So, the allowances, cut in steps, will stand out less on the collar right side. Remove surplus fabric at the points. Slash along the curved edges every 15-20 mm (9/16-13/16"), leaving 1 mm (1/16") before the stitching.

35



2,5-3

Turn the collar out and smooth the corners. Press it forming a roll towards the under collar. Topstitch along the collar 1 mm (1/16") away from the edge. Press the seam again.

36



Press the lower seam allowances of one collar stand piece towards the wrong side. It will be the under collar stand.

37



2,5-3

Pin the under collar stand to the upper collar with right sides together. Align the edges of the under and upper collars, but do not consider that the upper collar is slightly bigger than under collar. You

need this to have the collar look good in the finished garment. Stitch the collar and the collar stand 10 mm (3/8") in from the edge.

38



1,5

Pin the upper collar stand to the under collar with right sides together. Working from the under collar stand, stitch the collar and the collar stand 10 mm (3/8") in from the edge. Stitch exactly atop the previous seam. To have curved edges looking similar, draw the marking for the stitching beforehand using the paper pattern.

39



Trim the upper collar stand seam allowances to 3-4 mm (1/8") and the collar seam allowances to 5-6 mm (3/16-1/4"). Clip V shapes along the curved edges every 3 mm (1/8"). Be careful not to cut through the stitching. Slash along the collar stand upper edges every 15-20 mm (9/16-13/16"). Turn the collar stand out to the right side and press it.

40



Working on the wrong side, draw a line along the upper stand collar.

41



2,5-3

Fold the front placket lower edge towards the right side. Stitch the placket lower edge along it 15 mm (1/2") in from the edge.

42



Remove surplus fabric at the points. Trim away the front placket seam allowance at 3 mm (1/8"). Repeat the process for the opposite front placket (steps 41-42).

43



Press the garment lower hem at 7 mm (1/4") towards the wrong side.

44



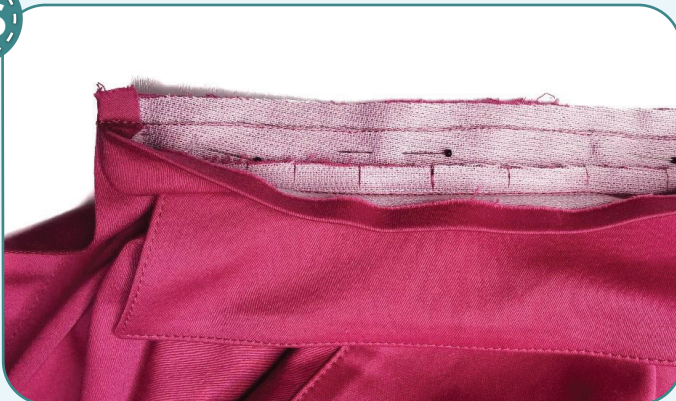
Fold the garment lower hem at 7 mm (1/4") again. Turn the placket corner to the right side and smooth it. Give the hem a final pressing.

45



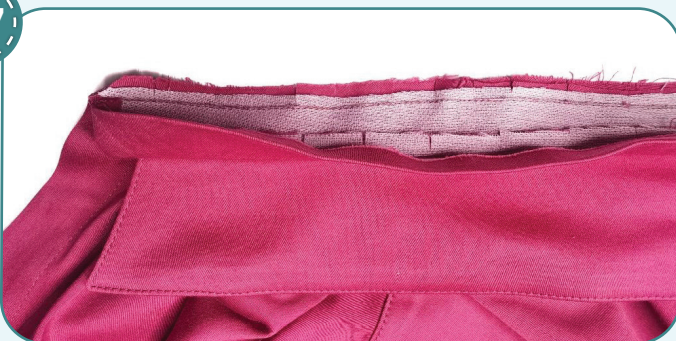
Topstitch the garment lower hem 1 mm (1/16") away from the fold. Press it.

46



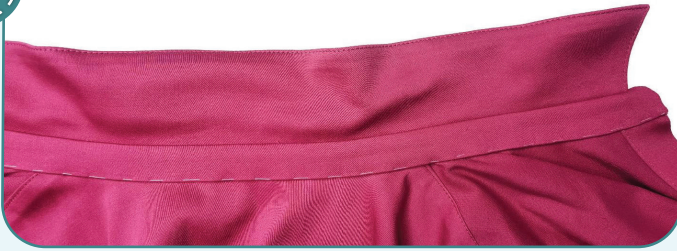
Pin the upper stand to the garment neckline with right sides together aligning the marks. Working on the collar side, stitch the pieces, slightly to the left of the drawn line.

47



Trim the upper stand seam allowances to 4-5 mm (3/16"). Slash along the edges every 15-20 mm (9/16-13/16"), leaving 1 mm (1/16") before the stitching. Press the seam allowances flat towards the stand.

48

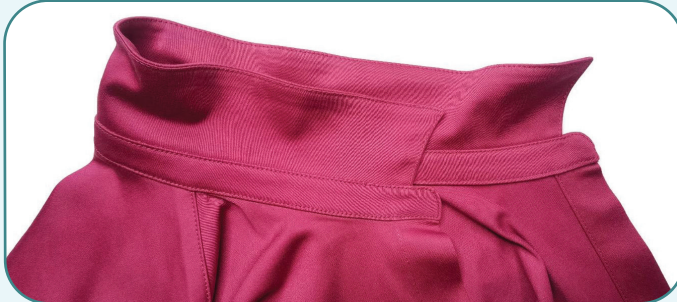


Hand-baste the under collar stand over the seam line.

49



Working from the right side, edgestitch the stand all around the perimeter 1 mm (1/16") away from the edge. Make sure that the under collar stand is also evenly stitched all around the perimeter. Remove the basting stitches and press it.



50

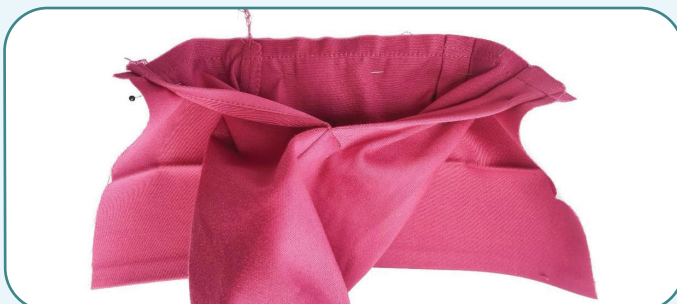


Press the cuff long edge seam allowances at 10 mm (3/8") to the wrong side. Press them in half.

51



Pin the cuff to the sleeve lower hem with right sides together. Stitch them 10 mm (3/16") away from the edge.

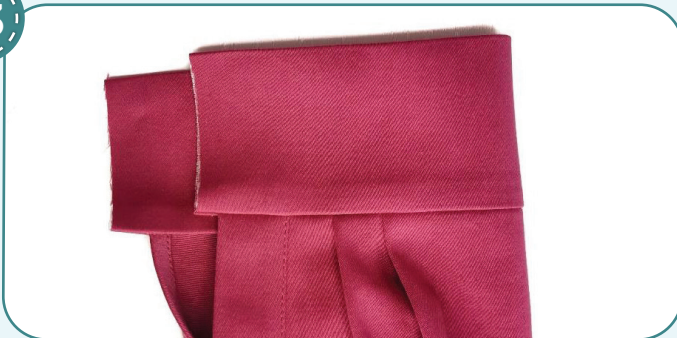


52



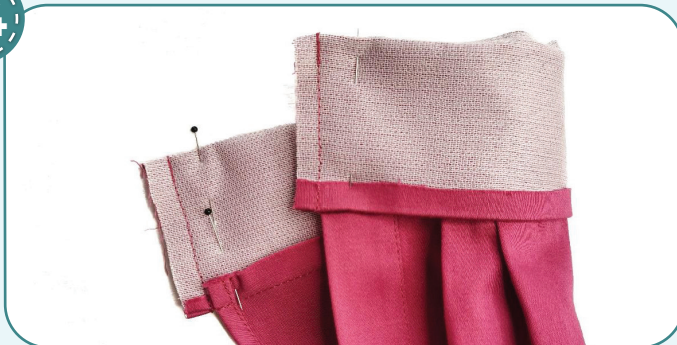
Trim the cuff seam allowance to 3-4 mm (1/8").

53



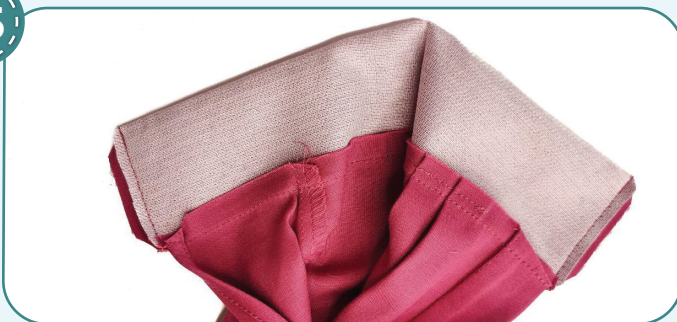
Press the seam allowances towards the cuff.

54



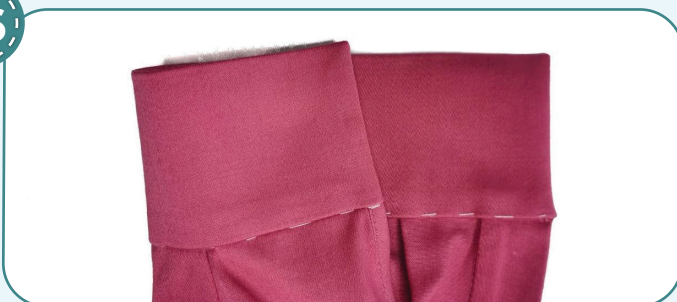
Fold the cuff in half, with right side inside. Pin the short edges. Stitch the cuffs side edges 10 mm (3/8") in from the edge.

55



Trim the cuff seam allowances on the right side to 3-4 mm (1/8"). Remove surplus fabric at the points.

56



Turn the cuff out and press it. Hand-baste the cuff edge overlapping the seam line.

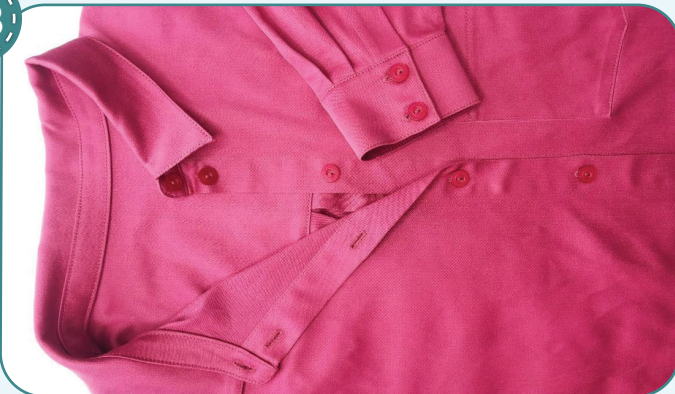
57



2,5-3

Working from the right side, edgestitch the cuff all around the perimeter 1 mm (1/16") away from the edge. Make sure that the inside is also evenly stitched all around the perimeter. Remove the basting stitches and press it.

58



Transfer the marks for the buttonholes from the pattern onto the right front. Use the buttonholing foot to sew buttonholes to the size of the buttons prepared. Carefully cut the buttonholes with the seam ripper, but avoid cutting the stitching threads. Press it. Transfer the marking for the buttons on the left front and the cuffs. Hand stitch or machine the buttons.

59



Remove the basting stitches, trim and hide the thread tails and press the garment once again. The shirt is ready!

ELINA PATYKOVA

ПРО ШИТЬЕ

Shirt Fame

Thank you for joining my
team and me!
Share your works in my
groups. Hope you will stay
with us for our next project!



ELINA_PATYKOVA



ELINA-PATYKOVA.RU



VK.COM/ELINA_PATYKOVA