

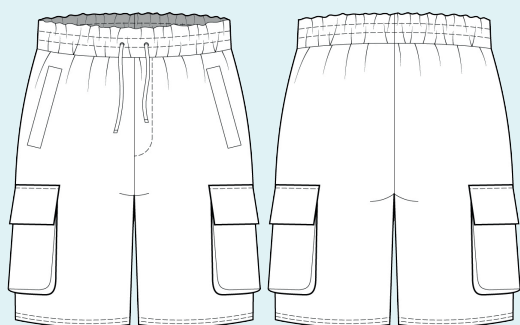
ELINA PATYKOVA

ПРО ШИТЬЕ

Instructions  
for sewing

## Shorts Gang

#патыкова\_gang



Skill level



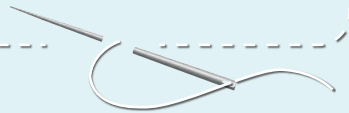
# Materials and notions



- sweatshirt loop back fabric
- woven interfacing for stretchy fabric
- elastic 40 mm (1 9/16) wide
- eyelets 8 mm (5/16") 2 pcs.
- flat draw cord 120-150 cm (4-5 ft)
- matching thread
- Jersey 80 or Stretch 80 needles

**If you are not sure about the fit of the garment, it is recommended to sew a muslin with similar properties (elasticity, thickness, drape) first. This will allow you**

**to adjust the length, width and fit of the garment and save time.**



To find out how long a piece of fabric to take, you should place the pattern pieces onto the table, the floor or bedspread, pre-measured width equal to half the width of the selected fabric. Place the pieces, caring the direction of the grain line, their number, i.e., the way you will place them when cutting. Measure the length of the pattern pieces fit, add to this length 5% for the fabric shrinkage - this will be the required amount of fabric for the project. Before beginning your sewing project, wash the fabric in warm water, dry and iron it.

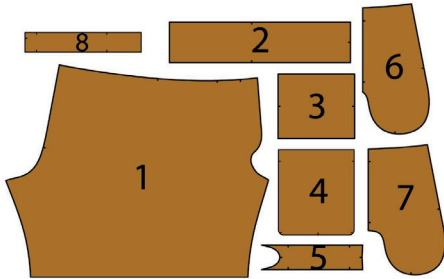
**How to cut: Print and glue all the paper patterns. When printing, do not forget to check the size of the test square.**

**Put the paper pattern pieces onto the fabric. It is important to check that the grain is straight. Pin the paper pattern pieces to the fabric gently and cut the fabric along outline. Note: seam allowances are already included. Transfer all the marks from the pattern onto the wrong side of your fabric.**



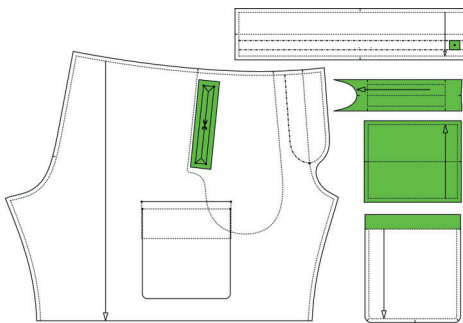
## Now you have

### SHORTS PIECES:



1. pant leg - cut 2
2. waistband - cut 1 on the fold
3. paper bag pocket flap - cut 2
4. paper bag pocket - cut 2
5. welt - cut 2
6. pocket smaller lining - cut 2
7. pocket bigger lining - cut 2
8. gusset for a paper bag pocket - cut 2 on the fold

### PIECES TO INTERFACE:



#### ■ Green - woven interfacing for stretchy fabric:

- welt pocket openings
- places for eyelets on the waistband
- welts
- flaps
- paper bag pocket top seam allowances

## Construction

# Symbols



straight stitch



the stitch length in (mm)



flat lock stitch



zigzag stitch



the stitch width in (mm)



3-Step Zigzag Seam Finishing



unilateral zipper presser foot



universal presser foot



invisible zipper presser foot



**pinning**

You should lockstitch the seam and trim the thread tails or tie the seam thread tails and hide them into the seam after sewing a serger stitch or cover seaming chain stitch.



double welting (piping) presser foot



3-thread serger stitch



4-thread serger stitch

## NOTE

**A**

### **4-thread serger stitch**

If you do not have a serger, you can use stretch stitches available on your sewing machine, or at least, a zigzag stitch.

**B**

### **3-thread serger stitch**

If you do not have a serger, you can replace it with an overedge stitch, or a zigzag stitch.

**C**

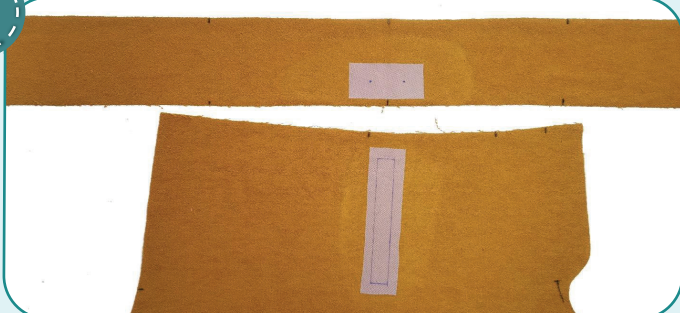
### **flat lock stitch**

If you do not have a coverstitch machine, the flat seam can be performed with a) a twin needle on a sewing machine, b) decorative stretch seam on a sewing machine, c) finish the seams with serger and stitch them with a straight stitch.

# Shorts construction



1



Fuse interfacing to the pocket welts and flaps. Fuse interfacing to the parts of the paper bag pocket top seam allowances, the area for the eyelets on the waistband and the welt pocket openings.



2



4



2,5-3,5



7

Pin the gusset to the paper bag pocket piece with right sides together. Serge the pieces.

3



4



2,5-3,5



7

To avoid bulk, press the seam allowances towards the pocket, press 30 mm (1 3/16") of the top seam allowance towards the gusset. Finish the gusset long outer edge with serger. Press it.



4



Fold the paper bag pocket upper edge 30 mm (1 3/16") to the wrong side and press it. You can hand-baste the edges. Coverstitch the edge. Press it again.

5



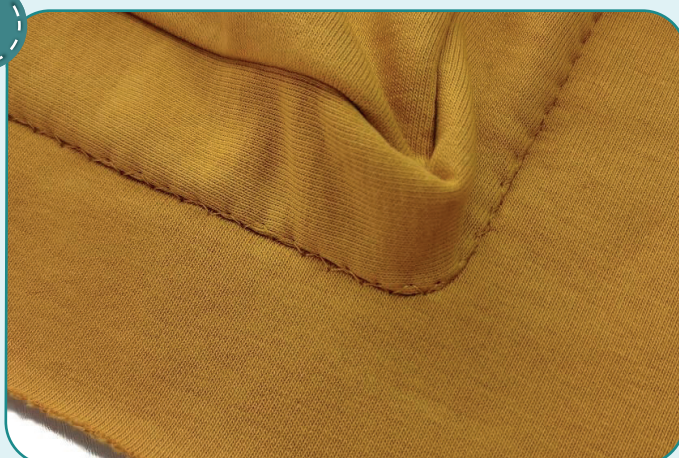
Press the other gusset edge 15 mm (9/16") to the wrong side.

6



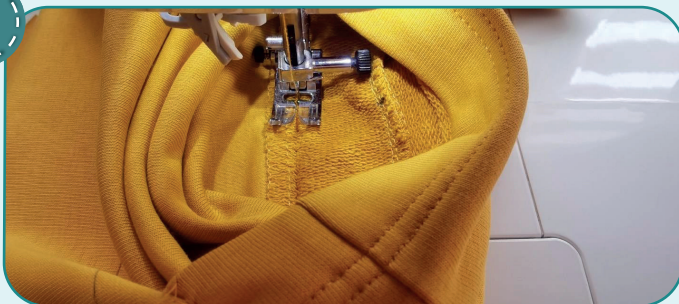
Transfer the marking for the paper bag pocket onto the pant leg. Hand-baste or glue the paper bag pocket with a glue stick aligning the marks.

7



Use zig-zag stitch to sew the pocket along the side and bottom edges. Care the needle get onto the pocket edge in the left position and onto the garment in the right position.

8



2,5-3

Unfold the pocket and start stitching from the inside. Stitch exactly along the gusset fold line. Sew very slowly and carefully, smoothing out the fabric in front of the foot after each stitch. Remove the zigzag stitch previously made and press.

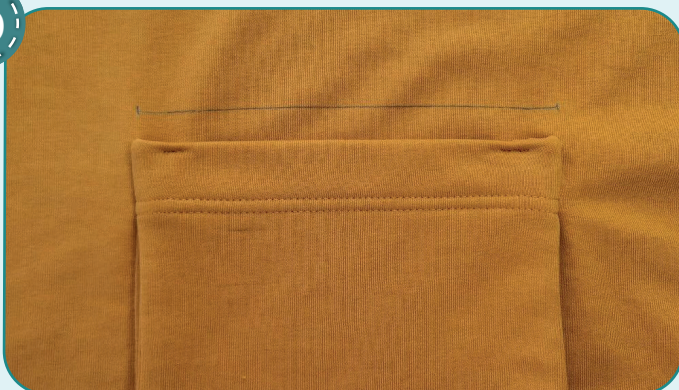
9



2,5-3

Tuck the gusset inside and align its attaching seams with each other. Working from the wrong side, sew a stitch 30 mm (1 3/16") long, getting exactly into the seam. Press the pocket, tucking the gusset inside. Repeat the process for the opposite pocket.

10



2,5-3

Make two bar tacks to secure the gusset. Press the pocket.



11



2,5-3

Fold the flap lengthwise, right sides inside. Pin and stitch its sides 7 mm (1/4") away from the edge.

12



Trim one of its seam allowances to 3-4 mm (1/8"). Trim the corners. Turn the flap through to the right side. Push out the corners and press.

13



Transfer the flap attaching seam line from the pattern onto the garment right side. Draw a parallel line 7 mm (1/4") below the flap attaching seam line to align the flap edge with it.

14



Pin the flap right side to the lower line on the garment right side. Mark the line for the stitching on the flap 7 mm (1/4") away from the edge.

15



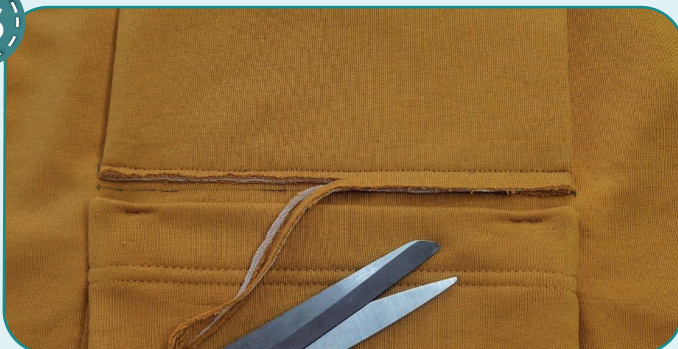
2,5-3

Stitch the flap to the garment.





16



Trim the flap seam allowance to 3-4 mm (1/8"). The scissors are placed at a 45° angle to the surface to cut the seam allowance gradually. Press the flap into place.

17



Topstitch the flap 5 mm (3/16") away from the seam. Use a zipper presser foot for it. Press it. Repeat the process for the opposite paper bag pocket (steps 2-17).

18



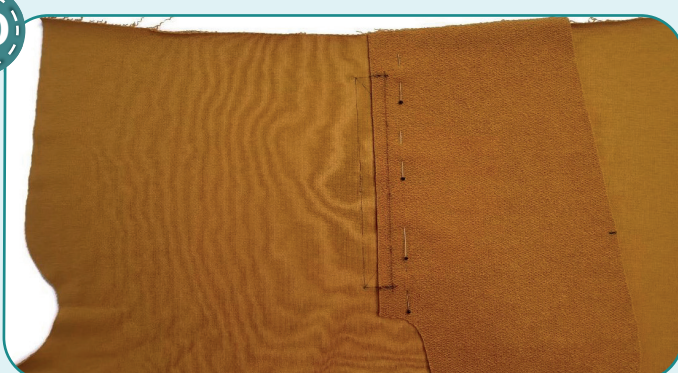
Place the welt in half lengthwise (wrong side inside) and press it.

19



Mark the welt pocket opening on the right side. Mark the middle of the box on the right side.

20



Pin the bigger pocket lining to the garment with right sides together. Align the edge with the box center. Place the lining toward the back. Working on the wrong side, draw the marking for the seam 10 mm (3/8") in from the edge.

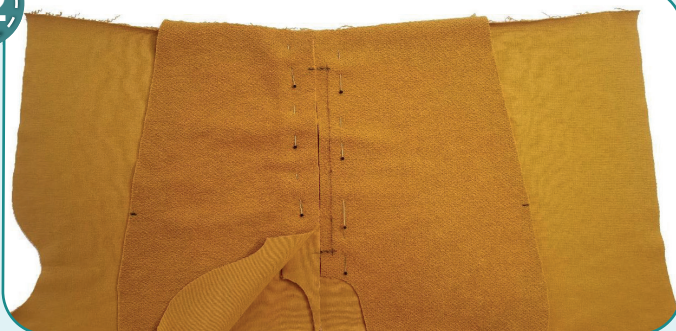


21



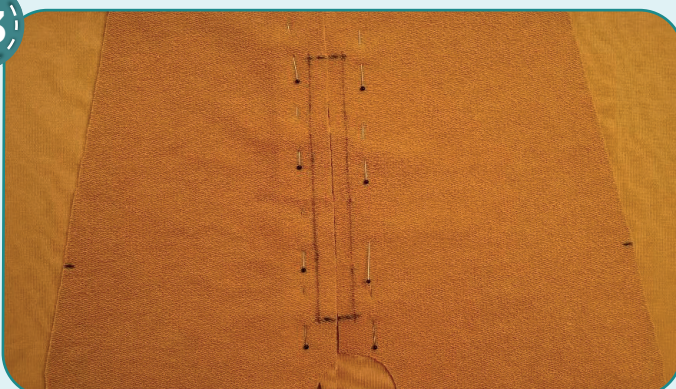
Pin the welt to the garment right side. Align the edges with the box center. Place the welt toward the front.

22



Pin the pocket smaller lining atop the welt with wrong side facing up. Align the edge with the box center. Place the lining toward the front.

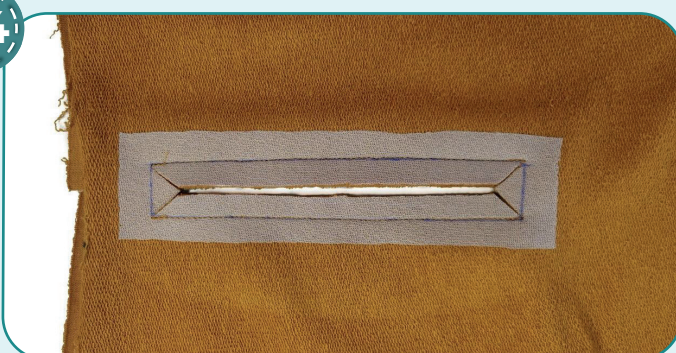
23



Working on the pocket smaller lining wrong side, draw the marking for the seam 10 mm (3/8") in from the edge. Sew two parallel seams along the marking. Start and finish the seams at the same level.



24



Slash the fabric between the seams, leaving 15 mm (9/16") before and after the attaching seams. Slash into the corners to get triangles. Do not cut through the lining and the welt! Turn the pocket pieces out to the wrong side and press them.



25



4#



2,5-3,5



7

Serge the pocket bigger lining and one of the box edges together.

26



4#



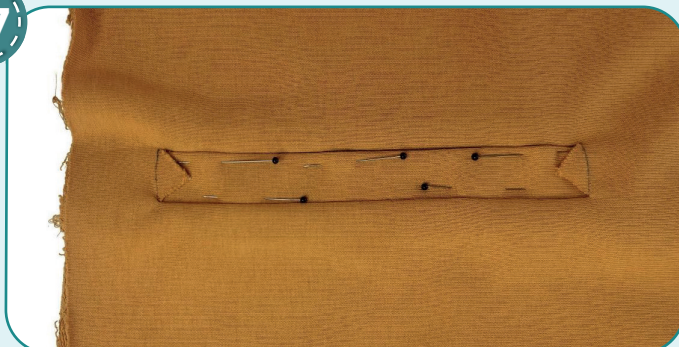
2,5-3,5



7

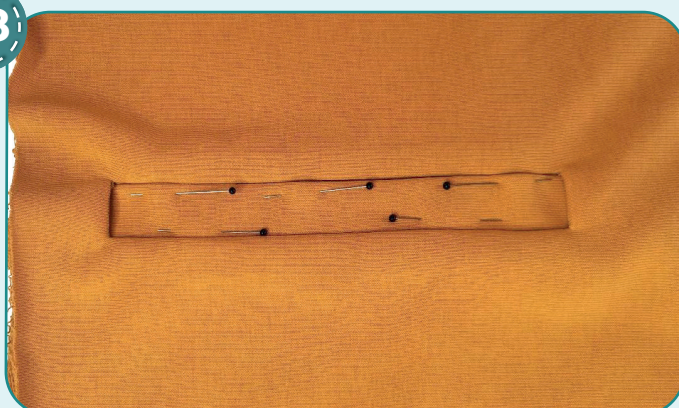
Serge the pocket smaller lining, the welt and the box opposite edge together.

27



Place the pant leg on the flat surface, right side facing up and smooth the pocket. Pin or hand-baste the welt to the pocket bigger lining with diagonal stitches to align the welt outer edge with the pocket bigger lining attaching seam and to have the seam ends on the same level.

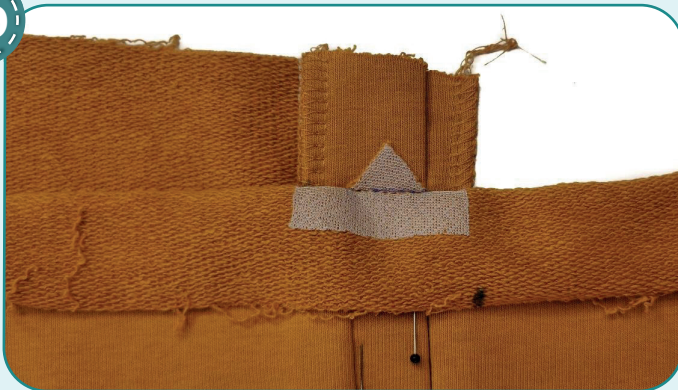
28



Tuck the corners inside. Unfold the garment upper edge to have the corner visible. Hand-baste or pin it and check the right side.



29



2,5-3

Stitch the corner to the pocket bigger lining and the welt. The seams ends should exactly coincide the pocket lining attaching seams. Repeat the process for the opposite corner. Press the pocket opening again.



30

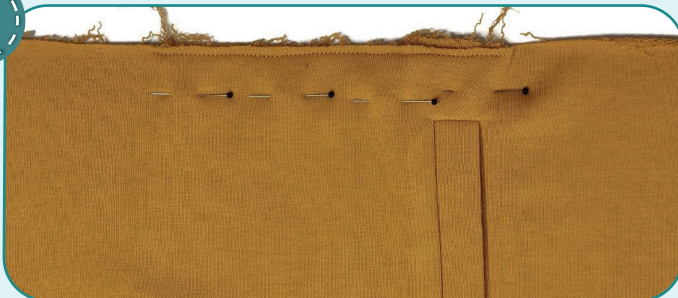


2,5-3,5

7

Pin both pocket linings. Serge them around the outline. Press the pocket.

31



2,5-3

Secure the pocket lining along the upper edge 7 mm (1/4") away from the edge. Repeat the process for the opposite pocket (steps 18-31).

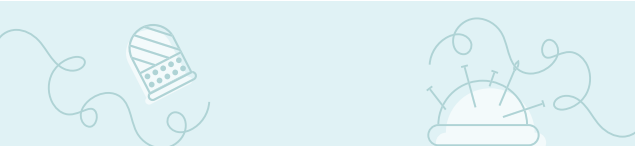
32



2,5-3,5

7

Pin the pant legs along the center front seam and fly front with right sides together. Serge the pieces.



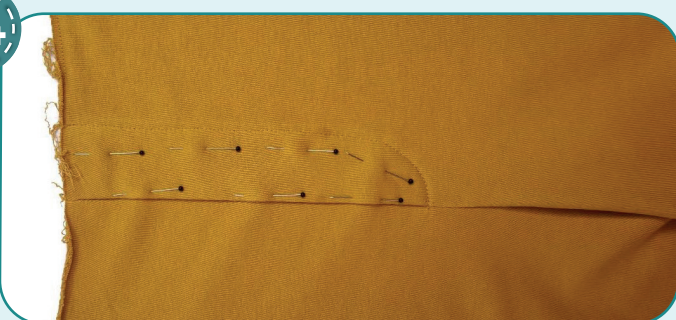
33



2,5-3

Extend the center front seam onto the fly front by about 15-20 mm (9/16-13/16") to the mark transferred from the pattern. Secure the fly front along the top edge with a straight stitch 7 mm (1/4") in from the edge.

34



2,5-3

Press the fly front and the seam towards the left leg. Pin it. Understitch the fly front from the wrong side along the serged seam allowances and press it. Press the seams.

35



7

2,5-3,5

Pin the pant legs along the crotch seam with right sides together. Serge the pieces. Press the seam allowances towards the right pant leg.

36



7

2,5-3,5

Pin the pant legs along the inseam edges with right sides together. Serge them. Press the seam allowances towards the front.

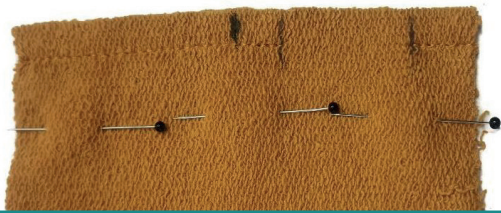
37



Punch 4 mm (3/16") holes for the eyelets with a Hole Punch or scissors. Attach the eyelets with a press.



38



7 mm (1/4") in from the edge. Press the seam allowances open.



2,5-3

Fold and pin the waistband along the short edges with right sides together. Stitch the waistband in a ring with two straight seams 60 mm (2 3/8") and 15 mm (9/16"), leaving a hole for the elastic. Stitch 7 mm (1/4") in from the edge. Press the seam allowances open.

39



Fold the waistband in half, lengthwise, wrong side inside and press it.

40



2,5-3,5



7

Pin the waistband to the garment upper edge, with right sides together, aligning the waistband seam with the garment crotch seam, waistband center with the center front seam. Serge the pieces. Tie the thread tails and hide them into the seam. Press the seam allowances down.

41



Cut the elastic 40 mm (1 9/16") wide and the length, indicated on the waistband paper pattern. Insert it through the hole in the waistband with a safety pin or a bodkin.

42



2,5-3

Join the ends of the elastic together by straight or zigzag stitch. Smooth the elastic evenly along the waistband.

## SHORTS CONSTRUCTION

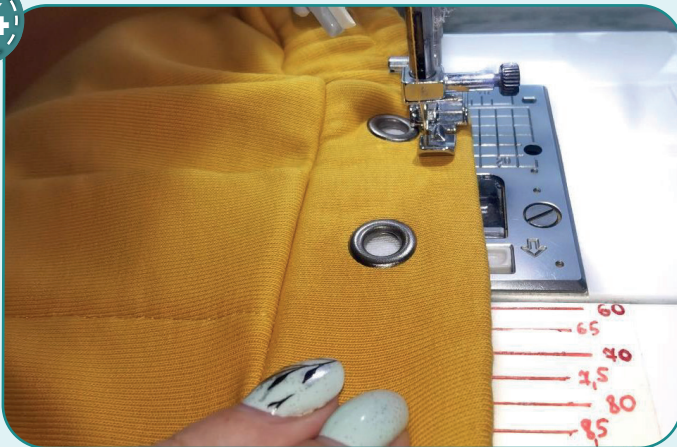
**NOTE:** it is recommended to try it on, check the fit, length and ease. Make sure, that the shorts waistband is comfortable to wear. If need be, change the length of the elastic.

43



Hand-baste the hole in the waistband with a blind stitch.

44



2,5-3

Evenly stretching the elastic, stitch in 13 mm (1/2") away from the waistband fold. Stitch a parallel seam 13 mm (1/2") away from the waistband attaching seam.



45



2,5-3



5,6

Coverstitch the pant leg lower hems 5 mm (3/16") away from the edge. Leave the edge itself raw. Tie the thread tails on the wrong side and hide them into the seam. Press the lower hems.

46



Thread the draw cord through, remove the basting stitches, trim the thread tails, and press the garment. The shorts are ready.

ELINA PATYKOVA

ПРО ШИТЬЕ

## Shorts Gang

Thank you for joining my  
team and me!  
Share your works in my  
groups. Hope you will stay  
with us for our next project!



ELINA\_PATKOVA



ELINA-PATKOVA.RU



VK.COM/ELINA\_PATKOVA