

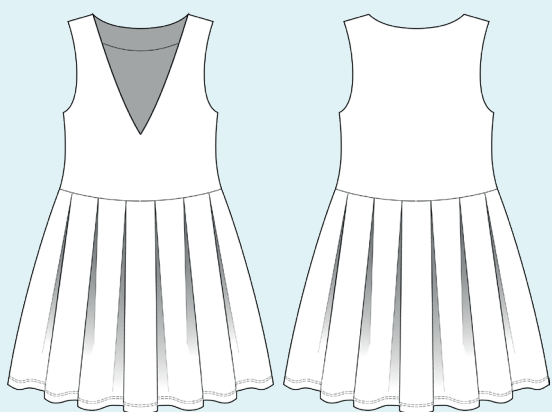
ELINA PATYKOVA

ПРО ШИТЬЕ

Instructions
for sewing

School Pinafore Dress

#патыкова_school



Skill level



Materials and notions



- jersey (cotton lycra french terry is used for this garment)
- knit fusible interfacing
- fusible interfacing strip
- matching thread
- Jersey 80-90 or Super Stretch 80-90 needles

If you are not sure about the fit of the garment, it is recommended to sew a muslin with similar properties (elasticity, thickness, drape) first. This will allow you

to adjust the length, width and fit of the garment and save time.



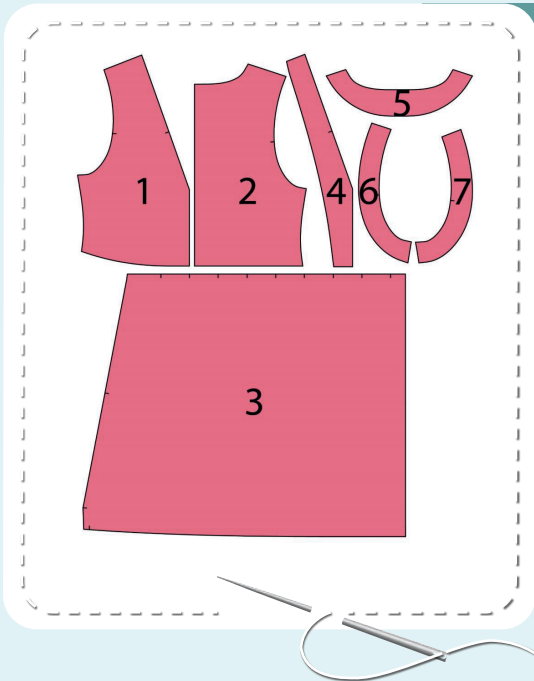
To find out how long a piece of fabric to take, you should place the pattern pieces onto the table, the floor or bedspread, pre-measured width equal to half the width of the selected fabric. Place the pieces, caring the direction of the grain line, their number, i.e., the way you will place them when cutting. Measure the length of the pattern pieces fit, add to this length 5% for the fabric shrinkage - this will be the required amount of fabric for the project. Before beginning your sewing project, wash the fabric in warm water, dry and iron it.

How to cut: Print and glue all the paper patterns. When printing, do not forget to check the size of the test square.

Put the paper pattern pieces onto the fabric. It is important to check that the grain is straight. Pin the paper pattern pieces to the fabric gently and cut the fabric along outline. Note: seam allowances are already included. Transfer all the necessary marks from the pattern onto the wrong side of your fabric.

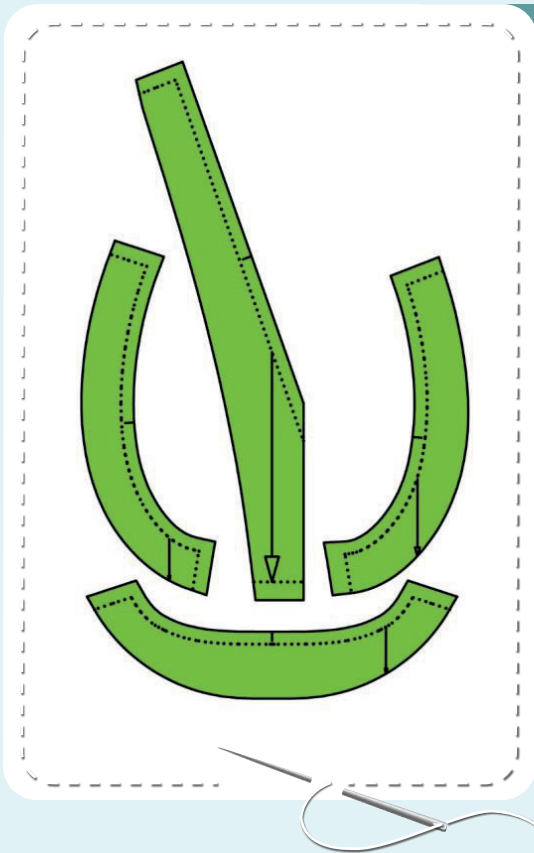


Now you have



PINAFORE DRESS PIECES

1. front bodice - cut 1 on the fold
2. back bodice - cut 1 on the fold
3. skirt panel - cut 2 on the fold
4. front neck facing - cut 1 on the fold
5. back neck facing - cut 1
6. back armhole facing - cut 2
7. front armhole facing - cut 2



PIECES TO INTERFACE

- Green - knit fusible interfacing
 - front neck facing
 - back neck facing
 - front armhole facing
 - back armhole facing

Construction

Symbols



straight stitch



the stitch length in (mm)



flat lock stitch



zigzag stitch



the stitch width in (mm)



3-Step Zigzag Seam Finishing



unilateral zipper presser foot



universal presser foot



invisible zipper presser foot



pinning

You should lockstitch the seam and trim the thread tails or tie the seam thread tails and hide them into the seam after sewing a serger stitch or cover seaming chain stitch.



double welting (piping) presser foot



3-thread serger stitch



4-thread serger stitch

NOTE

A

4-thread serger stitch

If you do not have a serger, you can use stretch stitches available on your sewing machine, or at least, a zigzag stitch.

B

3-thread serger stitch

If you do not have a serger, you can replace it with an overedge stitch, or a zigzag stitch.

C

flat lock stitch

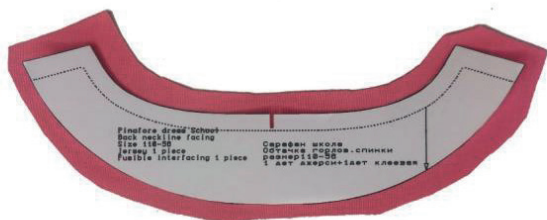
If you do not have a coverstitch machine, the flat seam can be performed with a) a twin needle on a sewing machine, b) decorative stretch seam on a sewing machine, c) finish the seams with serger and stitch them with a straight stitch.



Pinafore dress construction



1



Front and back neck facings and front and back armhole facings are cut rough. It means that you should make allowances 15-20 mm (9/16-13/16") wider. You should do this because the piece can shrink significantly after duplication.

2



Duplicate front and back neck facings and front and back armhole facings. Cut the pieces exactly along the patterns and draw the marks.

3



4

2,5-3,5

7

Pin front and back bodice pieces along shoulder edges with right sides together. Serge them. Press the seam allowances towards the front.

4



4

2,5-3,5

7

Pin the front and back neck facings along the shoulder edges with right sides together. Serge them. Press the seam allowances flat towards the back neck facing.

5

PINAFORE DRESS CONSTRUCTION

5



4

2,5-3,5

7

Finish the outer raw edges of each facing piece. Tie the thread tails at the end of the seam. Press it.

6



↺

2,5-3

↻

2,5-3

Pin the facings to the bodice neckline with right sides together. Align the shoulder seams and the centers. Draw the attaching seam marking line at the corner area. Stitch the facings 7 mm (1/4") in from the edge.

7



Trim the bodice seam allowances along the neckline to 3-4 mm (1/8"). Slash the seam allowances along the back neckline every 10 mm (3/8"), slash at the front neck corner point leaving 1 mm (1/16") before the stitching.

8



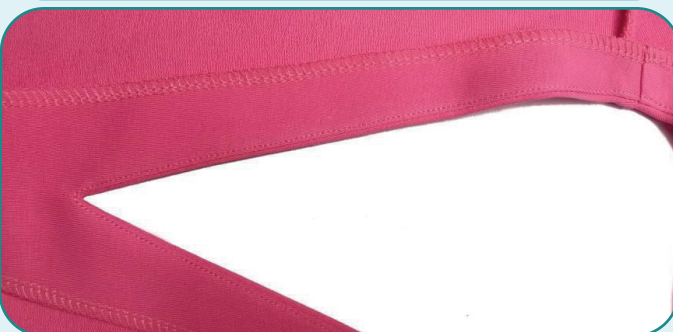
↺

2,5-3

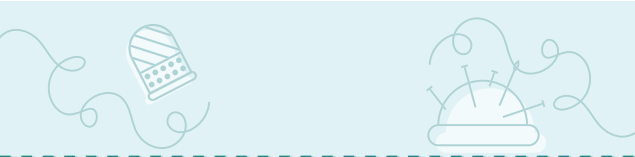
↻

2,5-3

Topstitch the seam allowance onto the neck facing 1 mm (1/16") in from the seam. Press the neck facing towards the bodice wrong side forming a roll.



PINAFORE DRESS CONSTRUCTION



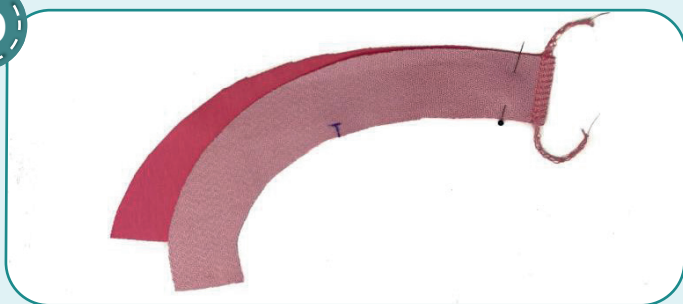
9



    2,5-3

Pin the front neck facing to the front bodice with wrong sides together aligning the marks. Secure the facing 4-5 cm (3/16") in from the edge. Note: the facing length is a little longer than the front bodice length. It is done because the duplicated facing is less stretchy than the bodice and when wearing - the facing will pull and deform the skirt pleats. Shape the front neck facing lower part, i.e., use iron to reduce the length of this section of the facing.

10



  2,5-3,5  7

Pin the front and back armhole facings along the shoulder edges with right sides together. Serge them. Press the seam allowances flat towards the back armhole facing.

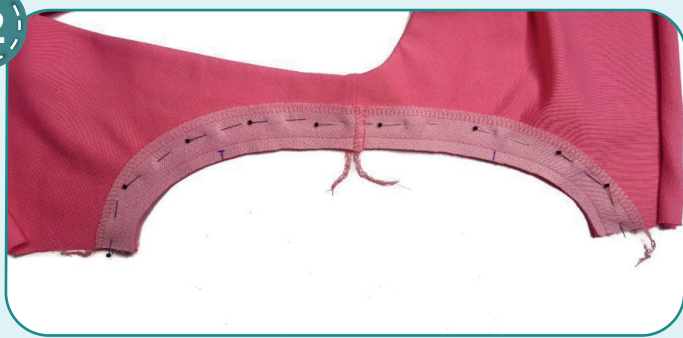
11



  2,5-3,5  7

Finish the outer raw edges of each facing piece with serger. Press them.

12



    2,5-3

Pin the facings to the bodice armhole with right sides together. Align the shoulder seams. Stitch the facings 7 mm (1/4") in from the edge.

13



Trim the bodice seam allowances along the armholes to 3-4 mm (1/8"). Slash the seam allowances every 10-20 mm (3/8-13/16") leaving 1 mm (1/16") before the stitching.

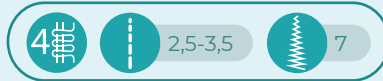
PINAFORE DRESS CONSTRUCTION

14



Topstitch the seam allowance onto the armhole facing 1 mm (1/16") in from the seam. Press the facing towards the bodice wrong side forming a roll. Repeat the process for the other armhole (steps 10-14).

15



Pin the front and back bodice and the armhole facings along the side seams with right sides together. Serge the pieces. Press the seam allowances towards the front. Repeat the process for the opposite side seam.

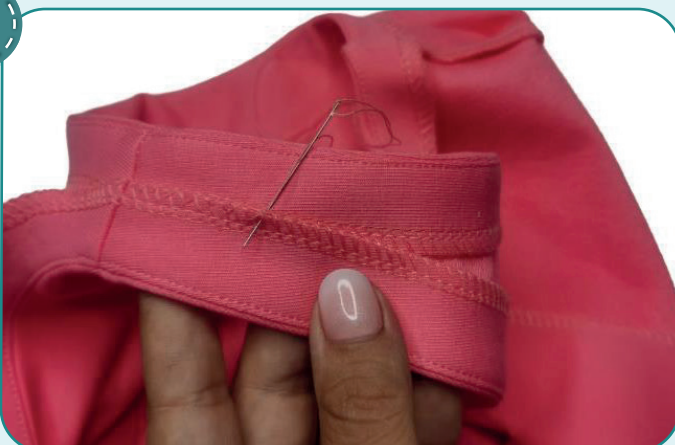
16



Secure the armhole facings along the side seams. Working from the right side, stitch the seam 20 mm (13/16") long exactly atop the side seam line.

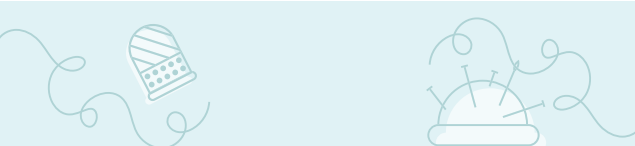


17



Hand-stitch the neck facing overlaps onto the armhole facings with a blind stitch. Repeat the process for the other shoulder seam.

PINAFORE DRESS CONSTRUCTION



18



Secure the back neck facing center to the back bodice with a piece of fusible interfacing strip. Repeat the process to secure the front and back armhole facings to the back lower third.

19



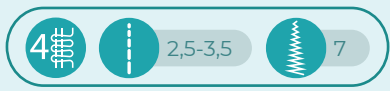
Make 6 box pleats along the upper edge of each skirt panel (the pleats are facing each other). Secure them with straight seams 5 mm (3/16") in from the edge.

20



Pin both skirt panels along the side edges with right sides together. Serge them. Press the seam allowances flat towards the back.

21



Serge the skirt and the bodice aligning the side seams and the centers. Tie the thread tails and hide them into the seam. Press the seam allowances upwards.

22



Fold the garment lower hem to the wrong side at 30 mm (1 3/16") and press it. You can hand-baste it. Coverstitch the lower hem. Tie the thread tails on the wrong side and hide them into the seam. Press the lower hem.

PINAFORE DRESS CONSTRUCTION

23



Remove the basting stitches, trim, and hide the thread tails and press the garment once again. The pinafore dress is ready!

ELINA PATYKOVA

ПРО ШИТЬЕ

School Pinafore Dress

Thank you for joining my team and me!
Share your works in my groups. Hope you will stay with us for our next project!

