

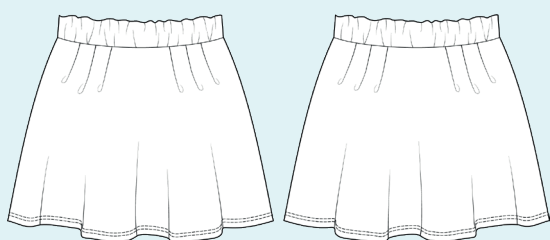
ELINA PATYKOVA

ПРО ШИТЬЕ

Instructions  
for sewing

## Skirt School

#патыкова\_school



Skill level



# Materials and notions



- jersey (french terry is used for this garment)
- elastic 35 mm (1 3/8") wide
- matching thread
- Jersey 80-90 or Super Stretch 80-90 needles

If you are not sure about the fit of the garment, it is recommended to sew a muslin with similar properties (elasticity, thickness, drape) first. This will allow you

to adjust the length, width and fit of the garment and save time.



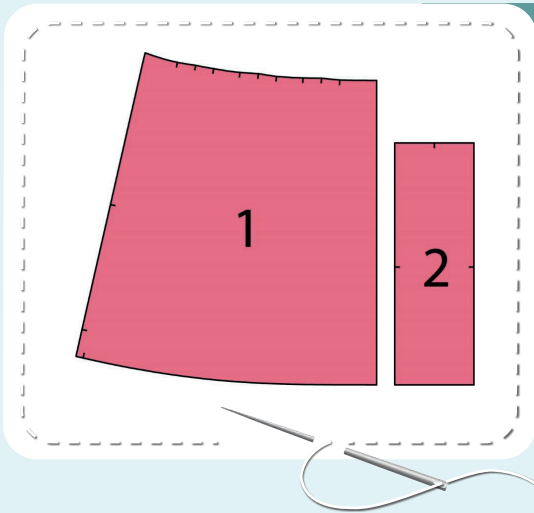
To find out how long a piece of fabric to take, you should place the pattern pieces onto the table, the floor or bedspread, pre-measured width equal to half the width of the selected fabric. Place the pieces, caring the direction of the grain line, their number, i.e., the way you will place them when cutting. Measure the length of the pattern pieces fit, add to this length 5% for the fabric shrinkage - this will be the required amount of fabric for the project. Before beginning your sewing project, wash the fabric in warm water, dry and iron it.

How to cut: Print and glue all the paper patterns. When printing, do not forget to check the size of the test square.

Put the paper pattern pieces onto the fabric. It is important to check that the grain is straight. Pin the paper pattern pieces to the fabric gently and cut the fabric along outline. Note: seam allowances are already included. Transfer all the necessary marks from the pattern onto the wrong side of your fabric.



## Now you have



### SKIRT PIECES:

1. skirt panel - cut 2 on the fold
2. waistband - cut 1 on the fold

Construction

# Symbols



straight stitch



the stitch length in (mm)



flat lock stitch



zigzag stitch



the stitch width in (mm)



3-Step Zigzag Seam Finishing



unilateral zipper presser foot



universal presser foot



invisible zipper presser foot



pinning

You should lockstitch the seam and trim the thread tails or tie the seam thread tails and hide them into the seam after sewing a serger stitch or cover seaming chain stitch.



double welting (piping) presser foot



3-thread serger stitch



4-thread serger stitch

## NOTE

A

### 4-thread serger stitch

If you do not have a serger, you can use stretch stitches available on your sewing machine, or at least, a zigzag stitch.

B

### 3-thread serger stitch

If you do not have a serger, you can replace it with an overedge stitch, or a zigzag stitch.

C

### flat lock stitch

If you do not have a coverstitch machine, the flat seam can be performed with a) a twin needle on a sewing machine, b) decorative stretch seam on a sewing machine, c) finish the seams with serger and stitch them with a straight stitch.



# Skirt construction



1



2,5-3

Fold 3 pleats facing outside of the center on each side of the front and back skirt panels. Secure them with straight seams 5 mm (3/16") in from the edge.

2



2,5-3,5



7

Pin both skirt panels along the side edges with right sides together. Serge them. Press the seam allowances towards the front.

3



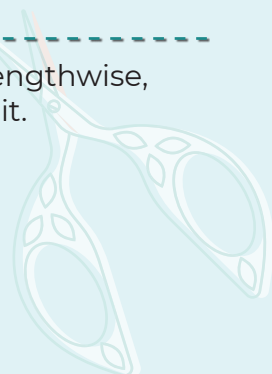
2,5-3

Fold the waistband in half, right side inside, and pin it along the short edges. Stitch the waistband in a ring with two straight seams 50 mm (2") and 10 mm (3/8"), leaving a hole for elastic. Stitch 7 mm (1/4") in from the edge. Press the seam allowances open.

4



Fold the waistband in half, lengthwise, wrong side inside and press it.



5

## SKIRT CONSTRUCTION



5



Pin the waistband to the garment upper edge with right sides together aligning the waistband seam with the garment side seam, the waistband center with the other side seam and the marks with the skirt panel centers.

6



4



2,5-3,5



7

Serge the waistband to the garment. Tie the thread tails and hide them into the seam.

7



Seam allowances are pressed down.

8



Cut elastic 35 mm (1 3/8") wide and with the length, indicated on the waistband pattern. Insert it through the hole in the waistband with a safety pin or a bodkin.

9



2,5-3

Join the elastic ends together by a straight or a zigzag stitch. Smooth the elastic evenly along the waistband.

## SKIRT CONSTRUCTION



**NOTE:** it is recommended to try it on, check the fit, length and ease. Consider the lower hem allowance width when trying on. Make sure, that the skirt waistband is comfortable to wear. If need be, change the length of the elastic.



10



Hand-baste the hole in the waistband with a blind stitch.

11



2,5-3

Evenly smooth the elastic inside the waistband. Secure the elastic with two transverse straight seams. Stitch one seam exactly atop the waistband side seam and continue the garment side seam to sew the other seam.

12



2,5-3



5,6

Fold the garment lower hem at 30 mm (1 3/16") to the wrong side and press it. You can hand-baste the edges. Coverstitch the lower hem. Tie the seam thread tails on the wrong side and hide them into the seam. Press it again.



13



Remove the basting stitches, trim, and hide the thread tails and press the garment once again. The skirt is ready.





ELINA PATYKOVA

ПРО ШИТЬЕ

## Skirt School

Thank you for joining my team and me!  
Share your works in my groups. Hope you will stay with us for our next project!

