

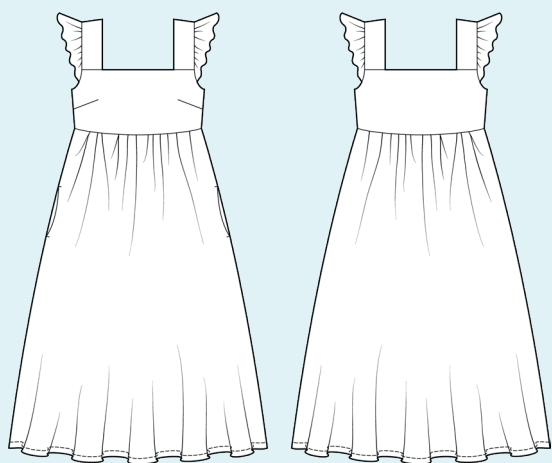
ELINA PATYKOVA

ПРО ШИТЬЕ

Instructions
for sewing

Sundress Tropical

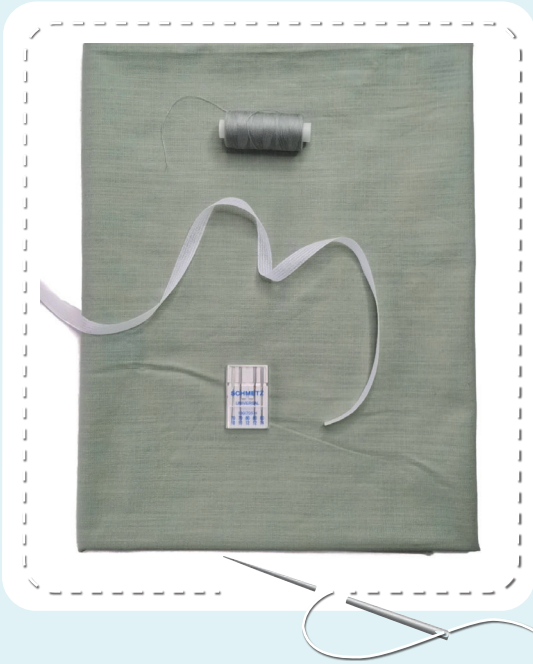
#патыкова_тропикал



Skill level



Materials and notions



- medium stretch (Stretch Linen, Stretch Cotton) dress fabric
- kantenband
- matching thread
- Universal 80-90 needles

If you are not sure about the fit of the garment, it is recommended to sew a muslin with similar properties (elasticity, thickness, drape) first. This will allow you

to adjust the length, width and fit of the garment and save time.



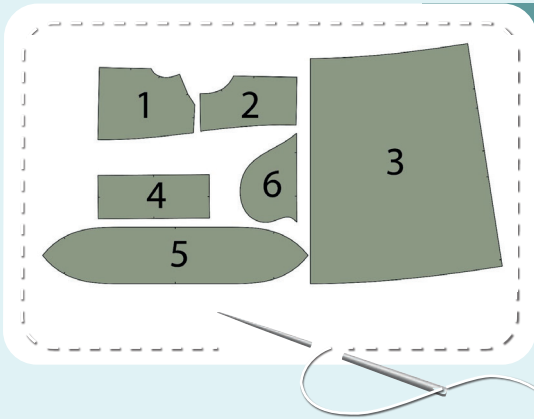
To find out how long a piece of fabric to take, you should place the pattern pieces onto the table, the floor or bedspread, pre-measured width equal to half the width of the selected fabric. Place the pieces, caring the direction of the grain line, their number, i.e., the way you will place them when cutting. Measure the length of the pattern pieces fit, add to this length 5% for the fabric shrinkage - this will be the required amount of fabric for the project. The fabric must be prepared for sewing: washed in warm water, dried, and ironed.

Let us start the cutting. Print and glue all the paper patterns. When printing, do not forget to check the size of the test square.

Put the paper pattern pieces onto the fabric. It is important to check that the grain is straight. Pin the paper pattern pieces to the fabric gently and cut the fabric along outline. Note: seam allowances are already included. Transfer all the necessary marks from the pattern onto the wrong side of your fabric.

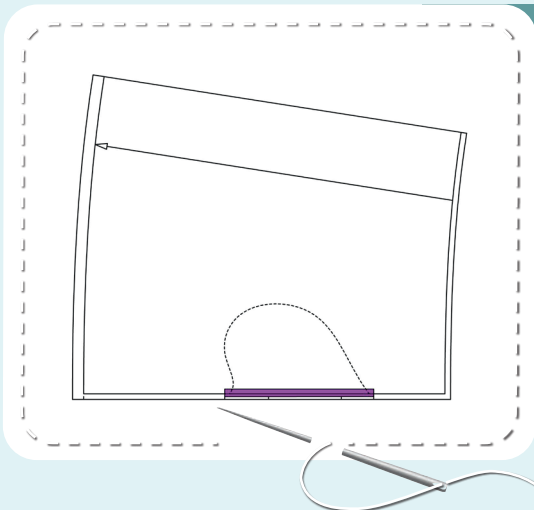


Now you have



SUNDRESS PIECES:

1. bodice front - cut 2 on the fold
2. bodice back - cut 2 on the fold
3. skirt panel - cut 2 on the fold
4. shoulder strap - cut 2
5. ruffle - cut 2
6. pocket lining - cut 4



PIECES TO INTERFACE:

- Purple - kantenband
- Reinforce the pocket openings on the skirt panels

Symbols



straight stitch



the stitch length in (mm)



flat lock stitch



zigzag stitch



the stitch width in (mm)



3-Step Zigzag Seam Finishing



unilateral zipper presser foot



universal presser foot



invisible zipper presser foot



pinning

You should lockstitch the seam and trim the thread tails or tie the seam thread tails and hide them into the seam after sewing a serger stitch or cover seaming chain stitch.



double welting (piping) presser foot



3-thread serger stitch



4-thread serger stitch

NOTE

A

4-thread serger stitch

If you do not have a serger, you can use stretch stitches available on your sewing machine, or at least, a zigzag stitch.

B

3-thread serger stitch

If you do not have a serger, you can replace it with an overedge stitch, or a zigzag stitch.

C

flat lock stitch

If you do not have a coverstitch machine, the flat seam can be performed with a) a twin needle on a sewing machine, b) decorative stretch seam on a sewing machine, c) finish the seams with serger and stitch them with a straight stitch.



Sundress construction

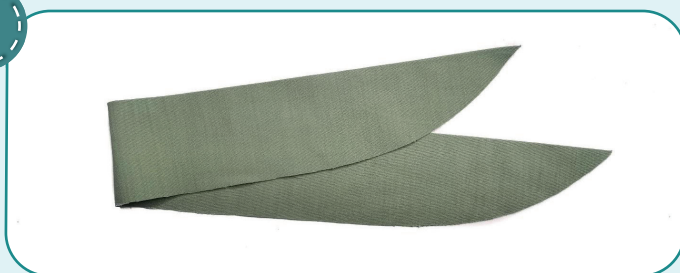


1



Fuse kantenband to the pocket openings on both skirt panels.

2



Fold the ruffle in half, lengthwise with wrong side inside and press it.

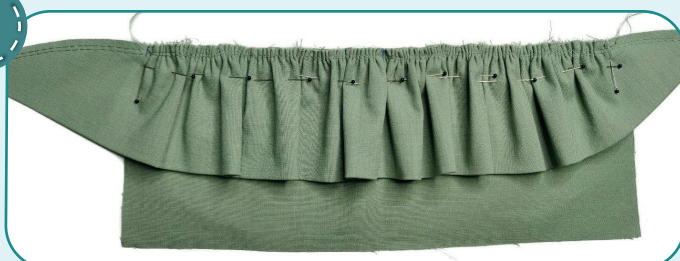
3



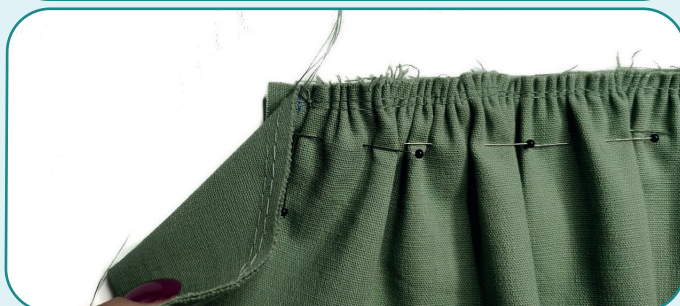
Stitch two parallel seams along the ruffle (folded in half) raw edges 7 mm (1/4") and 5 mm (3/16") in from the edge up to the front mark. After that, stitch two parallel seams: between the marks of the front

and the back, between the mark of the back and the fold. Set the maximum stitch length at 4 - 5 mm (3/16"), do not backstitch and leave the thread tails at least 50 mm (2") long at both sides of the seams. Pull the upper thread tails of the middle section and gather the ruffle up to the strap length. Tie the thread tails at the ends of the seams.

4



Working from the right side, pin the ruffle to the strap long edge. Smooth the gathers, align the center marks. Place the marks of the ruffles ends 10 mm (3/8") away from the strap edge.



5



SUNDRESS CONSTRUCTION

5



2,5-3

Stitch the ruffle to the strap between the marks 10 mm (3/8") away from the edge. Start and finish stitching from the strap side 10 mm (3/8") away from the edge.

6



Slash the ruffle at the marks but stop 1 mm (1/16") before the seam ends.

7



To avoid bulk, trim the ruffle seam allowances to 3 mm (1/8") between the marks.

8



2,5-3

Pin the strap other long edge right side to the ruffle, folding the strap in half. Sandwich the ruffle inside the strap with strap's right side inside. Stitch both strap sides, sewing exactly atop the ruffle attaching seam. Start and finish stitching 10 mm (3/8") away from the edge.

9



Turn the strap through to the right side and press. Repeat the process for the other ruffle and strap (steps 2-9).



10



2,5-3

Transfer the darts from the pattern onto the right side of both bodice fronts. Pin or hand-baste the darts evenly aligning their sides. Stitch the darts along the marking.

11



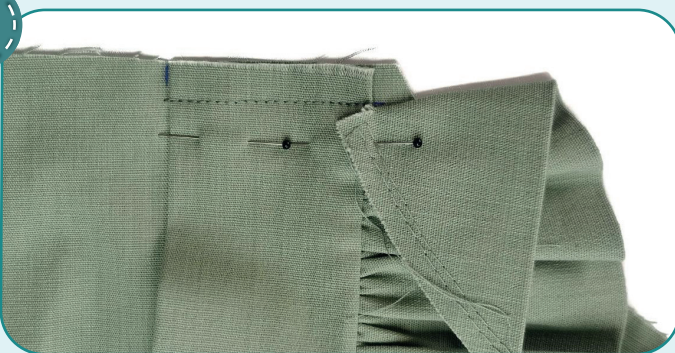
Trim the dart leaving seam allowances 10 mm (3/8"). Press the seam allowances open. If the fabric is fine, skip this step and press the darts upwards.

12



Draw the marks for the ruffles and strap ends on the bodice back right side and the meeting points of the seams.

13



2,5-3

Focusing on the marking, pin the strap raw edge to the bodice back right side aligning the strap edge with the bodice upper edge. Care not to mix up the strap sides (the ruffle edge is shorter in the front than in the back). Finish stitching exactly at the slash point on the ruffle.

14



2,5-3

Pulling the upper thread tails, gather the ruffle's ends up to the corresponding section length on the bodice back. Tie the thread tails. Pin the ruffle to the bodice back armhole with right sides together.

Stitch them 10 mm (3/8") in from the edge. Start stitching exactly from the end of the strap attaching seam.

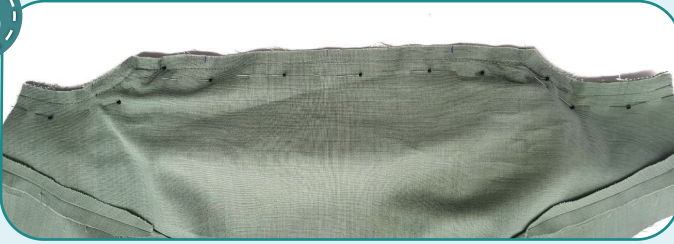


15



Trim the ruffle seam allowances to 3 mm (1/8"). Repeat the process for all the other strap ends (steps 12-15).

16



With right sides together, pin the bodice to the bodice lining along the armholes and the upper edge. Stitch them with one seam 10 mm (3/8") in from the edge. Stitch from the bodice front so that it

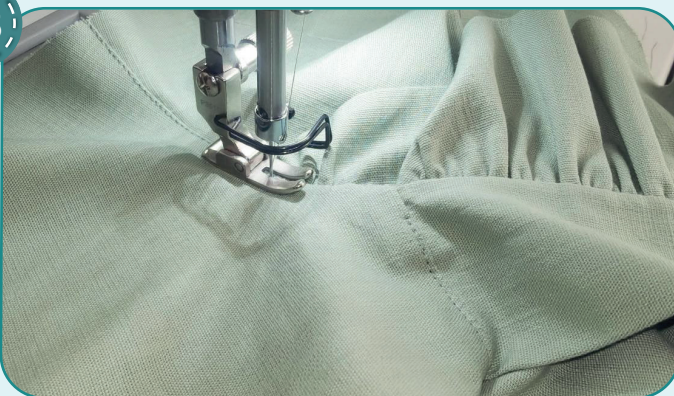
coincides with the seams attaching straps and ruffles.

17

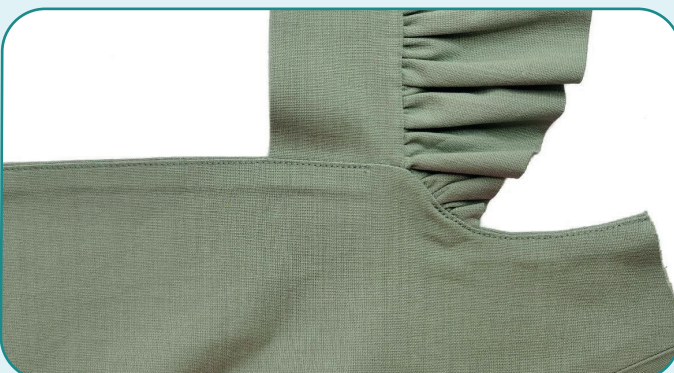


Trim the seam allowances on the corners and slash every 10 mm (3/8") leaving 1 mm (1/16") before the seam.

18



Stitch the armhole and upper edge seam allowances onto the lining 1 mm (1/16") away from the seam. Start sewing armholes from the side seams and stitch as close as possible to the straps. Repeat the process for the seam allowances along the upper edge, stitching as close to the corners as possible. Turn the bodice front out to the right side and press the upper edge and the armholes forming rolls towards the wrong side. Repeat the process for the bodice back (steps 16 -18).





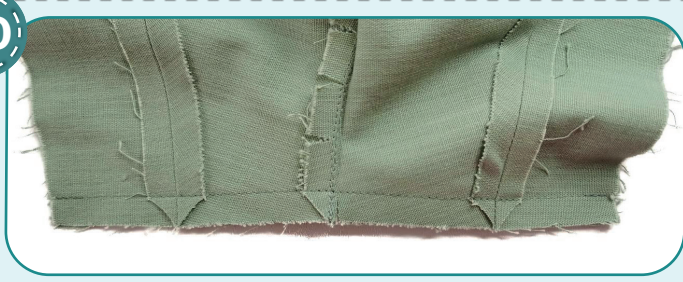
19



2,5-3

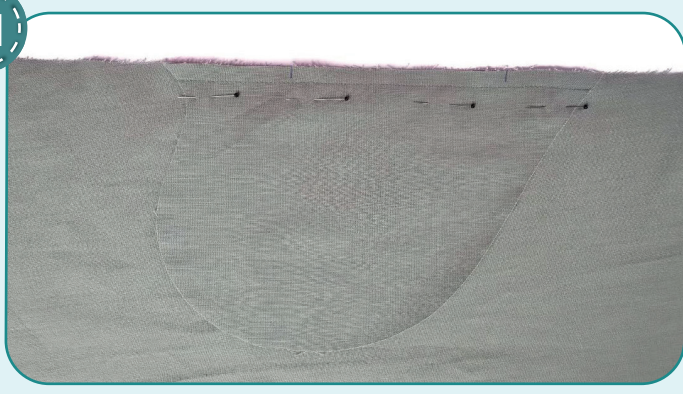
Pin the bodice front and back and their linings along the side edges with right sides together. Stitch them with one seam 10 mm (3/8") in from the edge.

20



Trim the seam allowances corners, then slash the seam allowances close to the seam joining the bodice and the bodice lining. Press the seam allowances open. Repeat the process for the other side seam (steps 19 - 20).

21



2,5-3

Pin or hand-baste the pocket lining to one of the skirt side edges, aligning the marks. Stitch them 9 mm (3/8") in from the edge.

22



3
3-4
7

Finish the skirt side seam allowances and the pocket lining seam allowances together with serger. Press the seams.

23



Press the pocket lining away from the skirt. Repeat the steps for the three pocket linings left.

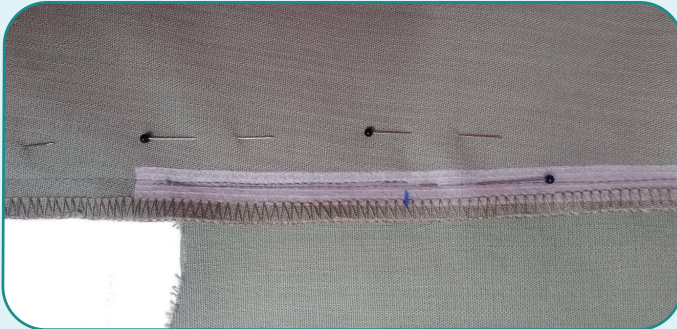




24



With right sides together, pin or hand-baste the skirt panels along the side seams. Stitch the side seams above and below the pocket marks 10 mm (3/8") in from the edge. Care to stitch 1 mm (1/16") away from the pocket lining attaching seams.

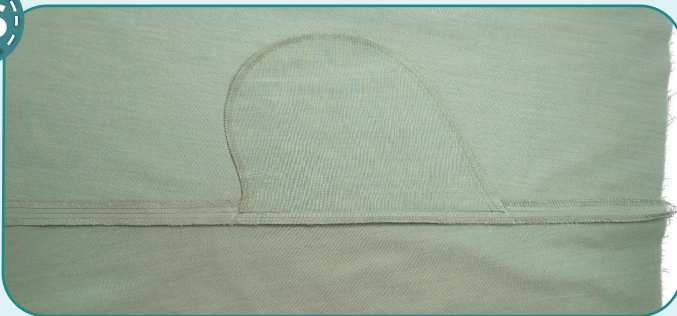


25



Pin around the pocket bags. Stitch them 10 mm (3/8") in from the edge. Finish stitching at the side seam.

26

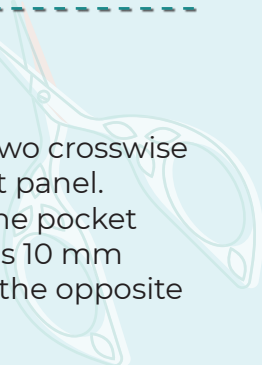


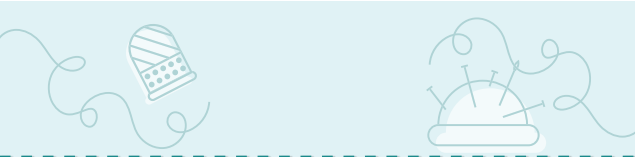
Finish the seams together with the serger or zig-zag stitching. Tie the seam thread tails and hide them into the seam. Press the side seam allowances open and then press the pocket towards the front skirt panel.

27



Secure the pocket bag with two crosswise seams sewn on the front skirt panel. Start stitching exactly from the pocket openings. The seams length is 10 mm (3/8"). Repeat the process for the opposite pocket (steps 25-27).





28



First sew two parallel seams along the skirt upper edge 5 mm (3/16") and 7 mm (1/4") in from the edge on one skirt panel, then do the same with the other skirt panel. Set maximum stitch length (4-5 mm), do not bar tuck, leave the thread tails at least 50 mm (2").

29



Pull the upper threads to gather the skirt upper edge to the length specified in the pattern. Tie the thread tails. Hand-baste or pin the skirt to the bodice lower edge with right sides together. Do not pin the bodice lining. Align the side seams and the pieces center marks. Spread the gathers evenly.

30



Stitch the skirt to the bodice 10 mm (3/8") in from the edge. Press the seam allowances towards the bodice.

31

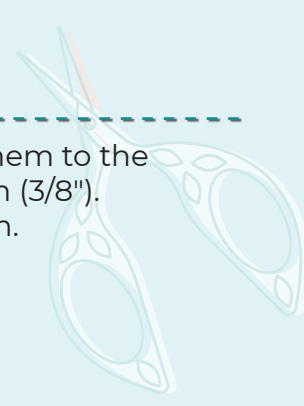


Tuck the bodice lining lower edge inside and hand-baste it with a blind stitch. Press it.

32



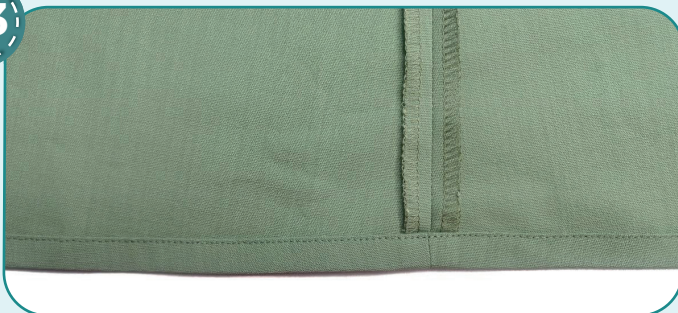
Press the garment lower hem to the wrong side twice at 10 mm (3/8"). Pin or hand-baste the hem.



SUNDRESS CONSTRUCTION



33



2,5-3

Stitch along the hem 10 mm (3/8") in from the edge. Press the seams.

34



Remove the basting stitches, trim and hide the thread tails and press the garment once again. The dress is ready!



ELINA PATYKOVA

ПРО ШИТЬЕ

Sundress Tropical

Thank you for joining my team and me!
Share your works in my groups. Hope you will stay with us for our next project!

