

ELINA PATYKOVA

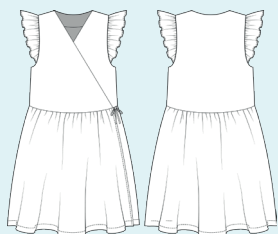
ПРО ШИТЬЕ

Instructions  
for sewing

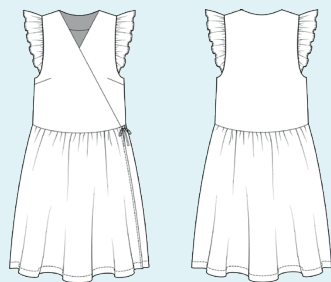
## Wrapover Muslin Sundress

#патыкова\_муслин

80- 146 sizes are without darts



152-164 sizes are with darts



Skill level



# Materials and notions



- muslin
- fusible interfacing
- 1 button 8-10 mm (5/16-3/8")
- elastic 3-4 mm (1/8") wide and 5 cm (2") long
- matching thread
- Universal 80-90 needles

If you are not sure about the fit of the garment, it is recommended to sew a muslin with similar properties (elasticity, thickness, drape) first. This will allow you

to adjust the length, width and fit of the garment and save time.

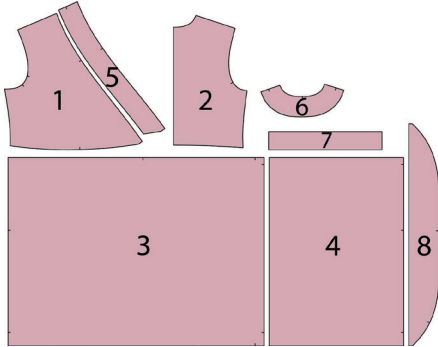
To find out how long a piece of fabric to take, you should place the pattern pieces onto the table, the floor or bedspread, pre-measured width equal to half the width of the selected fabric. Place the pieces, caring the direction of the grain line, their number, i.e., the way you will place them when cutting. Measure the length of the pattern pieces fit, add to this length 5% for the fabric shrinkage - this will be the required amount of fabric for the project. Before beginning your sewing project, wash the fabric in warm

water, dry and iron it.

**How to cut:** Print and glue all the paper patterns. When printing, do not forget to check the size of the test square. Put the paper pattern pieces onto the fabric. It is important to check that the grain is straight. Pin the paper pattern pieces to the fabric gently and cut the fabric along the outline. Note: seam allowances are already included. Transfer all the necessary marks from the pattern onto the wrong side of your fabric.

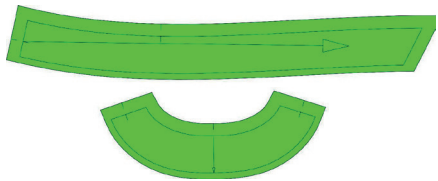
## Now you have

### SUNDRESS PIECES



1. front – cut 2
2. back - cut 1 on the fold
3. skirt front panel - cut 2
4. skirt back panel - cut 1 on the fold
5. front neck facing - cut 2
6. back neck facing - cut 1
7. strap - cut 2
8. ruffle sleeve - cut 2

### PIECES TO INTERFACE



- Green - fusible interfacing
  - front neck facing
  - back neck facing

## Construction

# Symbols



straight stitch



the stitch length in (mm)



flat lock stitch



zigzag stitch



the stitch width in (mm)



3-Step Zigzag Seam Finishing



unilateral zipper presser foot



universal presser foot



invisible zipper presser foot



**pinning**

You should lockstitch the seam and trim the thread tails or tie the seam thread tails and hide them into the seam after sewing a serger stitch or cover seaming chain stitch.



double welting (piping) presser foot



3-thread serger stitch



4-thread serger stitch

## NOTE

**A**

### **4-thread serger stitch**

If you do not have a serger, you can use stretch stitches available on your sewing machine, or at least, a zigzag stitch.

**B**

### **3-thread serger stitch**

If you do not have a serger, you can replace it with an overedge stitch, or a zigzag stitch.

**C**

### **flat lock stitch**

If you do not have a coverstitch machine, the flat seam can be performed with a) a twin needle on a sewing machine, b) decorative stretch seam on a sewing machine, c) finish the seams with serger and stitch them with a straight stitch.

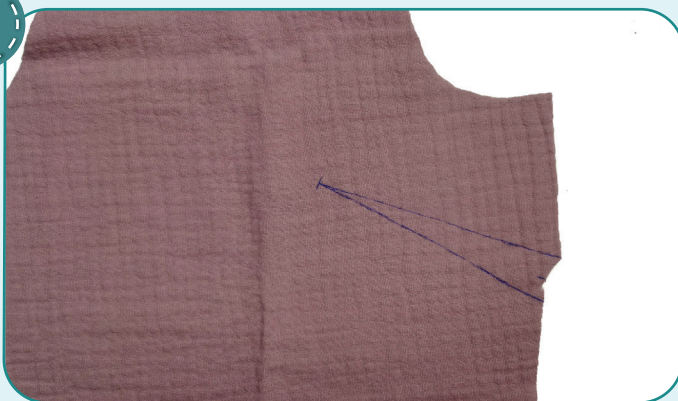




# Sundress construction

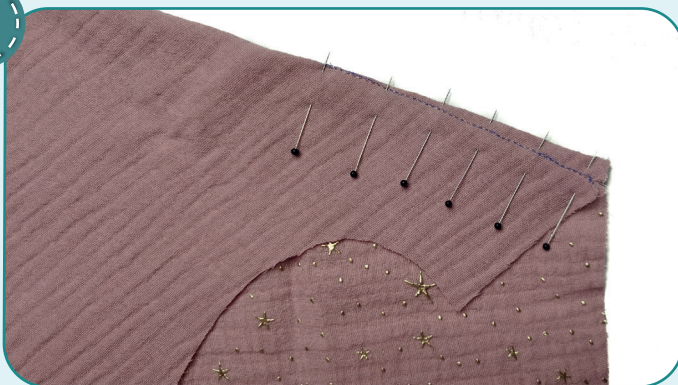
**NOTE:** Skip steps 1-2 for sizes 80-146.

1



Transfer the darts from the pattern onto the wrong side of both bodice fronts.

2



Pin or hand-baste the darts evenly aligning their sides. Stitch them along the marking line. Press the darts upwards.

3

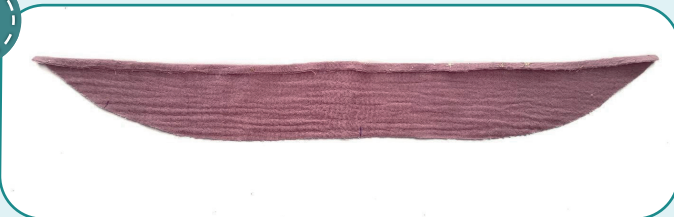


Duplicate the front and back neck facings.

**NOTE:** In this garment interfacing is fused to the right side of the fabric due to the pattern structure. Duplicate the piece wrong side in other cases.

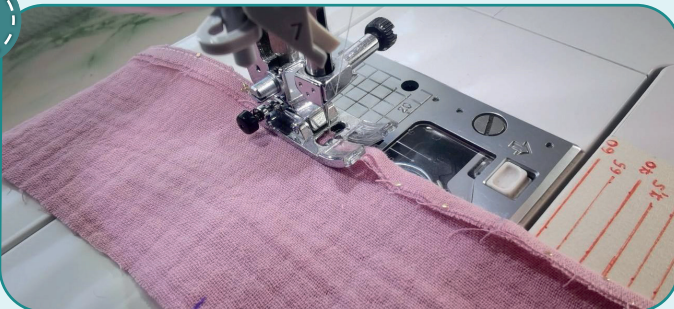
## SUNDRESS CONSTRUCTION

4



Press the ruffle sleeve straight edge by 4-5 mm (3/16") to the wrong side.

5

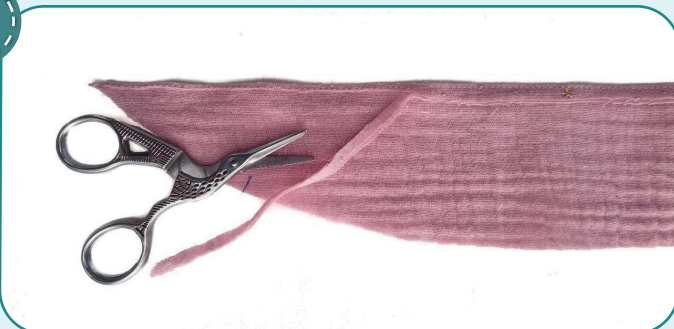


2,5-3

Topstitch it 1 mm (1/16") in from the edge. Press it. This stitching can be done with water-soluble thread. If not, then use a matching thread.

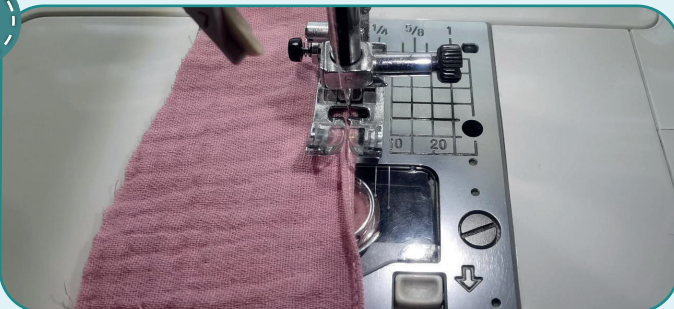


6



Trim the seam allowance as close to the seam as possible but do not cut the stitching.

7



2,5-3

Tuck the ruffle sleeve edge 1-1,5 mm (1/16") to the wrong side. Stitch on the wrong side. Try to stitch exactly atop the previous seam. Press it.





8



Sew two parallel seams along the ruffle sleeve curved edge 3 mm (1/8") and 5 mm (3/16") in from the edge. Set the maximum stitch length at 4-5 mm, do not backstitch and leave the thread tails

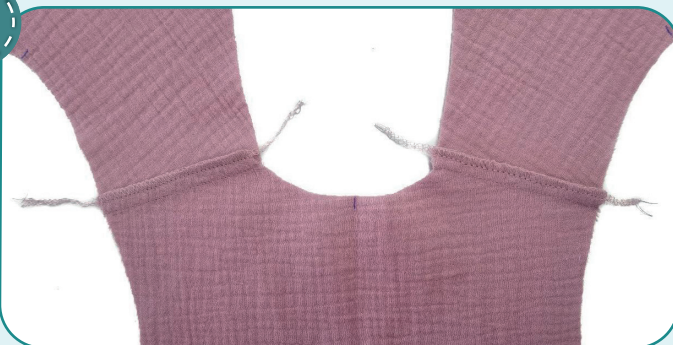
at least 50 mm (2") long at both ends of the seams. Repeat the process for the other ruffle sleeve (steps 4-8).

9



Pin the front and the back pieces along the shoulder edges with right sides together. Stitch the pieces 10 mm (3/8") in from the edge.

10



Finish the shoulder edges with a 3-thread serger stitch. Press the seam allowances flat towards the front.

11



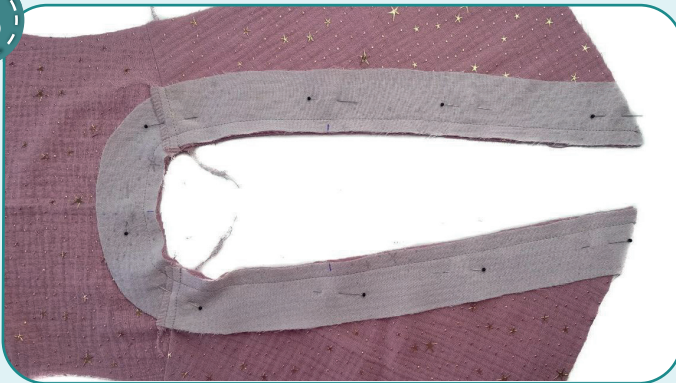
With right sides together, pin the front and back neck facings along the shoulder edges. Stitch the pieces 10 mm (3/8") in from the edge.

12



Finish the facing shoulder edges with a 3-thread serger stitch. Press the seam allowances towards the back neck facing.

13



2,5-3

With right sides together, pin the facing to the bodice along the neckline, aligning the marks. Stitch the facing 10 mm (3/8") in from the edge.

14



Trim the bodice seam allowance to 4 mm (1/8"). Slash the seam allowances every 10-20 mm (3/8-13/16") leaving 1 mm (1/16") before the stitching. Press the seam allowances towards the facing.

15



2,5-3

Topstitch the seam allowances on the facing 1 mm (1/16") in from the seam. Press the facing to the wrong side forming a roll.



16



3-4

Finish the facing outer edge with serger. Tie the thread tails at the end of the seam. Press.



17



2,5-3

Secure the neck facing along the shoulder seams. Stitch exactly atop the seam groove on the right side. Finish stitching 5 mm (3/16") before the neckline edge.



18



2,5-3

Secure the facing along the lower edges with a straight stitch 5 mm (3/16") in from the edge.

19



Tighten the ruffle sleeve to the length indicated on the pattern by pulling the ends of the upper threads of the parallel seams previously sewn. Tie the thread tails at both ends of the seams. Spread the gathers along the ruffle. With right sides together, pin the ruffle sleeve to the bodice armhole between the marks.

**NOTE:** If you lack experience, it is better to hand-baste first.





20



2,5-3

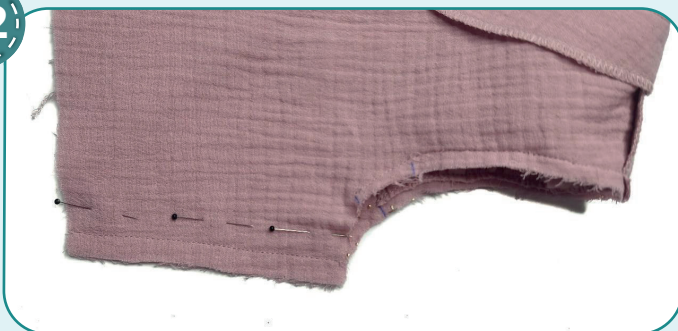
Stitch the ruffle sleeve 7 mm (1/4") in from the edge.

21



To avoid bulk, trim the seam allowances of the ruffle sleeve to 3 mm (1/8"). Repeat the process for the other ruffle sleeve (steps 19-21).

22



2,5-3

With right sides together, pin the front and back pieces along the side edges. Stitch the pieces 10 mm (3/8") in from the edge.

23



3-4



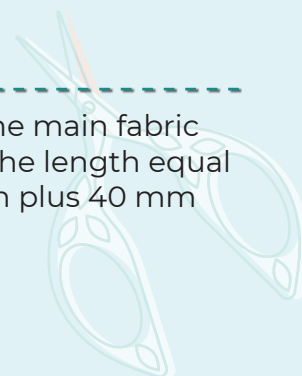
7

Finish the side edges with a 3-thread serger stitch. Press the seam allowances flat towards the front.

24



Cut two bias strips from the main fabric 30 mm (1 3/16") wide and the length equal the bodice armhole length plus 40 mm (1 9/16").





25



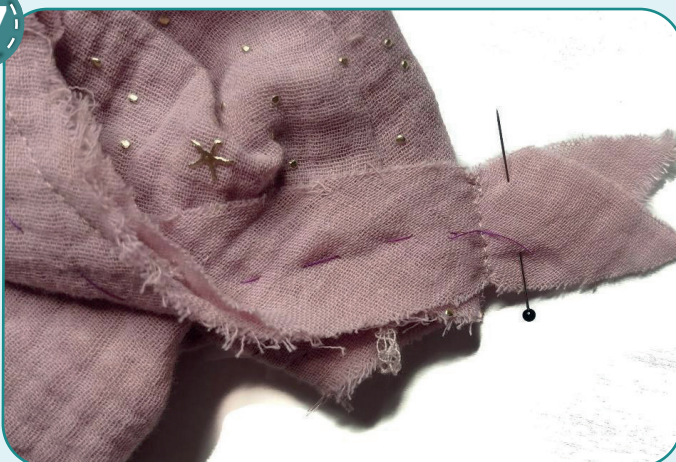
To avoid bulk, stratify the strips. Muslin layers are connected by threads. Gently notch the threads of one of the layers, one by one. Next, we use the layer with the intact threads.

26



With right sides together, hand-baste the bias strip to the armhole, but do not baste its ends.

27



Pin the bias strip ends with the right sides together. Stitch them to have the bias strip ring equal to the armhole.

28



Trim the bias strip ends to 7 mm (1/4") and press open.





29



2,5-3

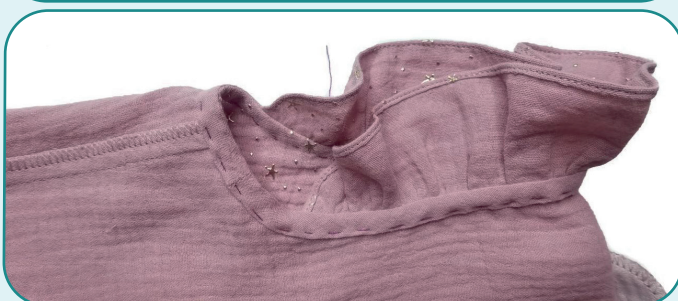
Stitch the bias strip to the garment 7 mm (1/4") in from the edge. Stitch from the bodice side for the seam to coincide with the ruffle sleeve attaching seam.



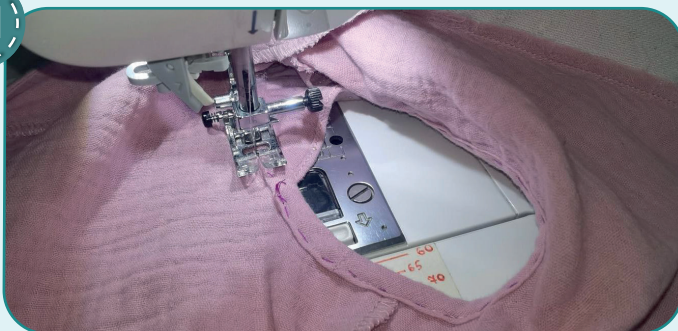
30



Double tuck the bias strip to the wrong side overlapping the seam allowance. Finely stitch it to the bodice wrong side so that it is the same width throughout the armhole. Press it.



31



2,5-3

Understitch the bias strip to the bodice wrong side 1 mm (1/16") in from the bias strip edge. Remove the basting stitches and press it. Repeat the process for the other armhole (steps 26-31).



## SUNDRESS CONSTRUCTION

32



Press the edges of the straps to the center with the wrong side inside. Fold the strap in half and press it. For convenience, you can hand-baste beforehand.

33



2,5-3

Stitch each strap 1 mm (1/16") in from the edge. Press it.

34



2,5-3

Working from the right side, pin one of the straps to the skirt left side edge. Place the strap 11 mm (7/16") below the skirt upper edge. Stitch the strap 7 mm (1/4") in from the edge.

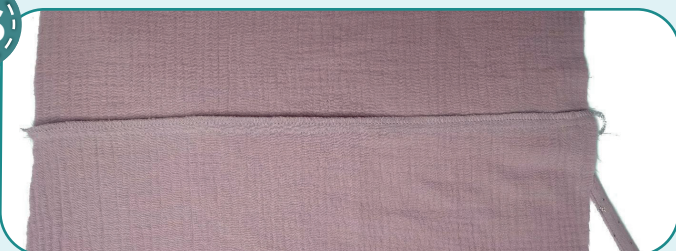
35



2,5-3

Pin the skirt back and front pieces along the side seams aligning the marks. Stitch the pieces 10 mm (3/8") in from the edge.

36



3-4



7

Finish the skirt side edges with a 3-thread serger stitch. Press the seam allowances towards the back.

37



Press the garment lower hem to the wrong side first at 10 mm (3/8") and then at 20 mm (13/16"). Pin or hand-baste the hem.





38



2,5-3

Topstitch the lower hem 20 mm (13/16") in from the edge. Press it.

39



Press the skirt's raw side edges to the wrong side by 10 mm (3/8") twice. Pin or hand-baste the hem.

40



2,5-3

Topstitch the skirt side hems 10 mm (3/8") in from the edge. Press it.

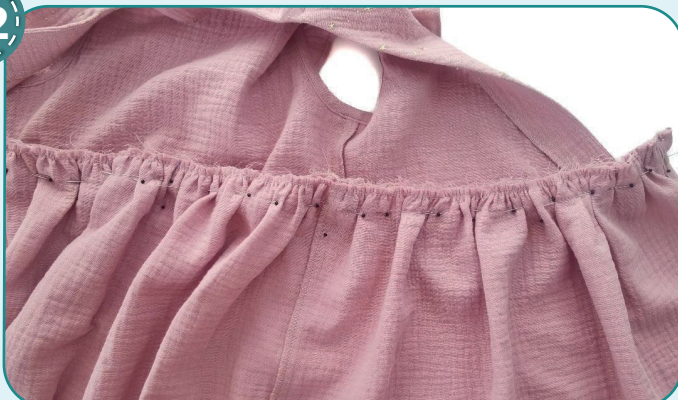
41



4-5

Stitch two parallel seams along the skirt upper edge 5 mm (4/8") and 7 mm (1/4") in from the edge. Set maximum stitch length (4-5 mm), do not bar tuck, leave the thread tails at least 50 mm (2").

42



Pulling the tails of the upper threads, gather the skirt upper edge to the length indicated on the pattern. Tie the thread tails at the ends of the seams. Baste or pin the skirt upper edge to the bodice lower edge right sides together. Align the side seams and the pieces center marks. Spread the gathers evenly.





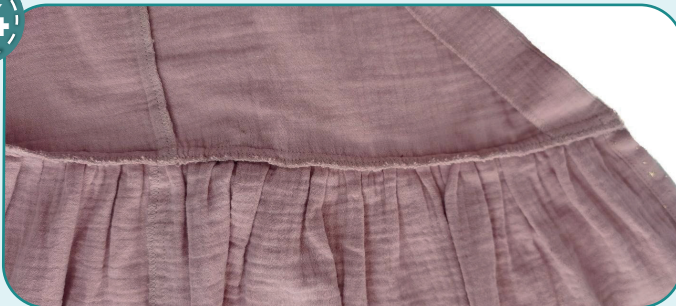
43



2,5-3

Stitch the skirt to the bodice 10 mm (3/8") in from the edge. The bodice and the skirt edges at the end of the stitching should coincide.

44



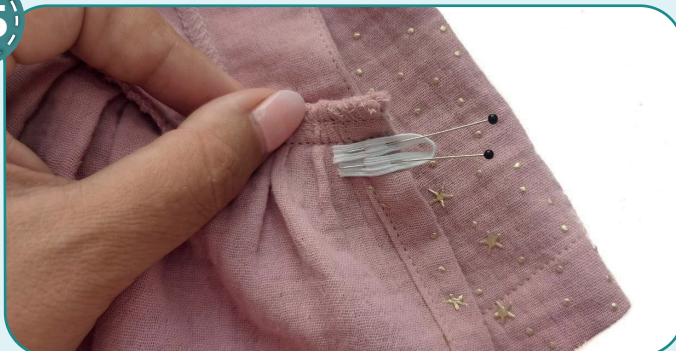
3-4



7

Finish the edges with a 3-thread serger stitch. Press the seam allowances down.

45



Working from the wrong side, make a loop from elastic and pin it to the left skirt front. Match the loop size to the button chosen. Place the loop below the bodice attaching seam and cover with the seam allowance.

46



2,5-3

Secure the loop and the seam allowance used to cover it, with two seams. Stitch one seam 1 mm (1/16") in from the edge and stitch the other seam exactly atop the hemming seam. Repeat the process for the opposite strap.

47



Working from the wrong side, sew a button to the seam allowance of the right skirt front.



48



Tie the ends of the straps, remove the basting stitches, trim, and hide the thread tails and press the garment. The dress is ready!



ELINA PATYKOVA

ПРО ШИТЬЕ

## Wrapover Muslin Sundress

Thank you for joining my  
team and me!  
Share your works in my  
groups. Hope you will stay  
with us for our next project!



ELINA\_PATKOVA



ELINA-PATKOVA.RU



VK.COM/ELINA\_PATKOVA