

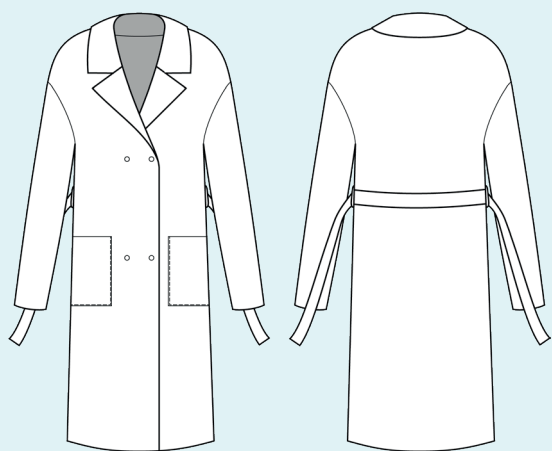
ELINA PATYKOVA

ПРО ШИТЬЕ

Instructions
for sewing

Coat Style

#патыкова_style



Skill level



ELINA_PATKOVA



ELINA-PATKOVA.RU



VK.COM/ELINA_PATKOVA

Materials and notions



- quilted shell fabric 150 g (5,3 oz)
- lining fabric
- Alfa snap buttons 15 mm (9/16") - 4 pcs.
- matching thread
- Microtex 80 needles

If you are not sure about the fit of the garment, it is recommended to sew a muslin with similar properties (elasticity, thickness, drape) first. This will allow you

to adjust the length, width and fit of the garment and save time.

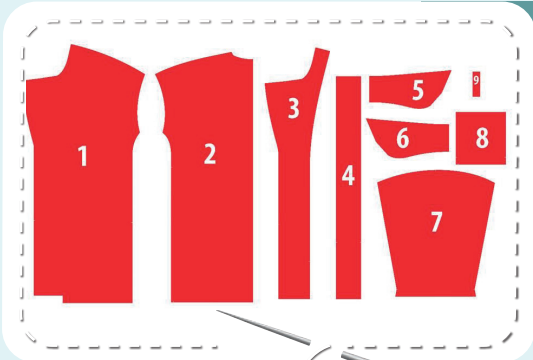
To find out how long a piece of fabric to take, you should place the pattern pieces onto the table, the floor or bedspread, pre-measured width equal to half the width of the selected fabric. Place the pieces, caring the direction of the grain line, their number, i.e., the way you will place them when cutting. Measure the length of the pattern pieces fit, add to this length 5% for the fabric shrinkage - this will be the required amount of fabric for the project.

How to cut: Print and glue the paper patterns. When printing, do not forget to check the size of the test square.

To sew the coat, you can use either quilted shell fabric, or quilt the shell fabric with insulation yourself. This garment is sewn from a diamond patterned quilted shell fabric. Put the paper pattern pieces onto the fabric. It's important to check

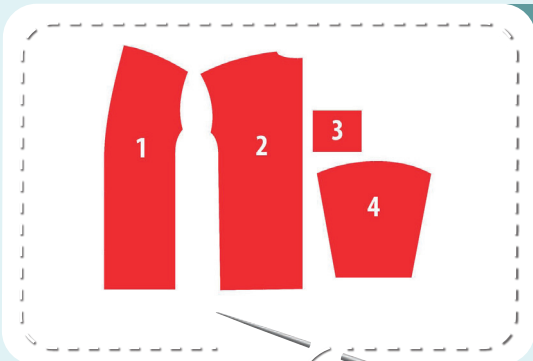
that the grain is straight. It is better to cut each piece from quilted fabric separately to get symmetrical quilted lines on the mirroring pieces. First cut one piece, then place it on the fabric with right sides together aligning the quilted lines and then cut the mirroring piece. Place the back with its center at the diamond tops. The front center line (located exactly midway between the snap buttons) goes through the diamond tops. Place the back side edge to the front side edge and place the front pieces to the diamond tops at the same level. Match the quilted lines on the pocket with corresponding lines on the front piece (the detailed description is below). Note: seam allowances are included. Transfer all the marks from the pattern onto the wrong side of your fabric.

Now you have



COAT PIECES:

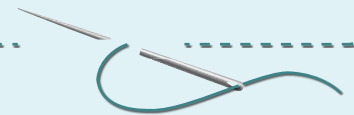
1. front – cut 2
2. back - cut 1 on the fold
3. front facing - cut 2
4. tie belt - cut 2 (can be cut 1 piece on the fold if your fabric is wide enough)
5. under collar– cut 1 on the fold
6. upper collar - cut 1 on the fold
7. sleeve - cut 2
8. pocket - cut 2
9. belt loop - cut 2



LINING FABRIC:

1. front - cut 2
2. back - cut 1 on the fold
3. pocket lining - cut 2
4. sleeve - cut 2

NOTE: If the lining fabric frays, it can be cut with pinking shears.



Construction

Symbols



straight stitch



the stitch length in (mm)



flat lock stitch



zigzag stitch



the stitch width in (mm)



3-Step Zigzag Seam Finishing



unilateral zipper presser foot



universal presser foot



invisible zipper presser foot



pinning

You should lockstitch the seam and trim the thread tails or tie the seam thread tails and hide them into the seam after sewing a serger stitch or cover seaming chain stitch.



double welting (piping) presser foot



3-thread serger stitch



4-thread serger stitch

NOTE

A

4-thread serger stitch

If you do not have a serger, you can use stretch stitches available on your sewing machine, or at least, a zigzag stitch.

B

3-thread serger stitch

If you do not have a serger, you can replace it with an overedge stitch, or a zigzag stitch.

C

flat lock stitch

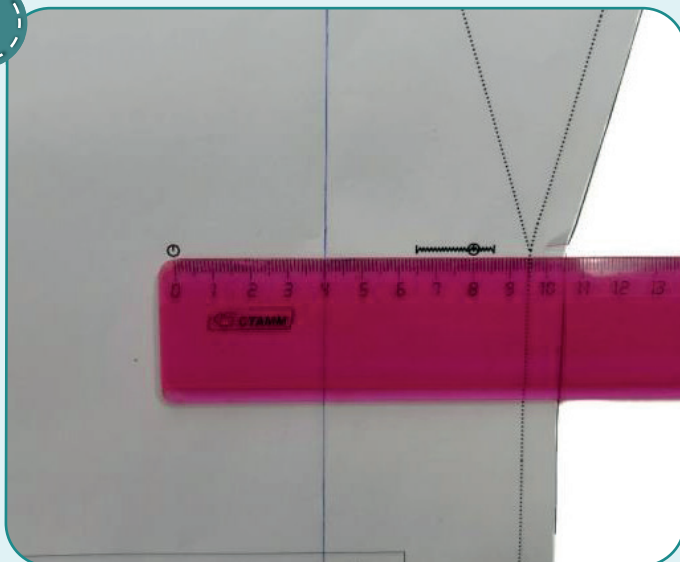
If you do not have a coverstitch machine, the flat seam can be performed with a) a twin needle on a sewing machine, b) decorative stretch seam on a sewing machine, c) finish the seams with serger and stitch them with a straight stitch.



Coat construction



1



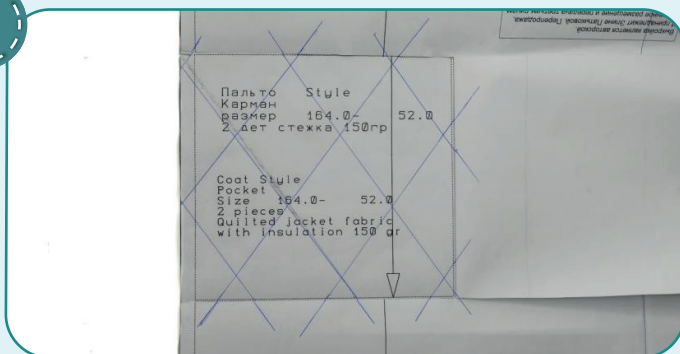
It is better to cut each piece from quilted fabric separately to get symmetrical quilted lines on the mirroring pieces. First cut one piece, then place it on the fabric with right sides together aligning the quilted lines and then cut the mirroring piece. Place the back with its center at the diamond tops. The front center line goes through the diamond tops. To get the center front line, find the center line between the snap buttons and draw the line, parallel to the edge, along the entire front piece. Place the back side edge to the front side edge and place the front pieces to the diamond tops at the same level.

2



When cutting the front pieces, cut the pocket out of the paper pattern. Accurately place the pattern on the front piece. Using a pen, continue the quilting lines from the front piece onto the paper pattern.

3



Place the pocket pattern under the front pattern. Join the front and the pocket quilted lines with a pen and a ruler. Then extend these lines to the pocket pattern edges.

4



Place the pocket pattern on the quilted fabric, aligning the lines. The opposite pocket is cut mirror to the first.

COAT CONSTRUCTION

5



3



2,5-3,5



7

Serge along the perimeter all the pieces from the quilted shell fabric with a serger. Serger stitching secures the insulation and shell fabric, quilted seams, and flattens the seam allowances. If you do

not have a serger, sew the shell fabric pieces with a straight stitch 4 - 5 mm (3/16") in from the edge.

6



2,5-3

With right sides together, pin the pocket and the pocket lining along the top edge. Stitch them 10 mm (3/8") in from the edge. Press the seams flat towards the lining. Be careful: do not confuse the top and bottom of the pocket and left and right pockets. Otherwise, the quilted stitches may not match when attaching the pockets to the fronts.

NOTE: All WTO (wet-thermal processing) steps should be done through a cotton pressing cloth. Select the temperature mode using some scraps of the fabric. Iron slightly not to flatten the insulation.

7



2,5-3

Fold the pocket along the top fold line with right side inside. Align the bottom and side (the one closer to the front center) edges and pocket lining edges. Stitch the pieces 10 mm (3/8") in from the edge.

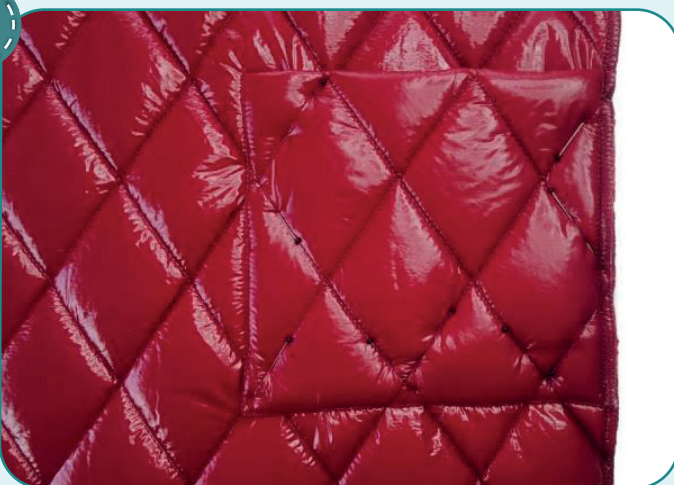
NOTE: If you lack experience it is better to hand-baste first.

8



Trim the corners close to the stitching. Turn the pocket to the right side, smooth the corners, and, working from the wrong side, press the pocket, forming a roll towards the lining.

9



Transfer the marking for the pocket onto the front right side. Pin or hand-baste the pocket to the front aligning the quilted lines. Topstitch the pocket 1 mm (1/16") in from the edge. Stitch the pocket other side edge 7 mm (1/4") in from the edge. Repeat the process for the opposite pocket (steps 6-9).

10



Pin the back and the fronts along the shoulder edges. Stitch the pieces 10 mm (3/8") in from the edge.

11



Pin the sleeve to the armhole with right sides together. Align the corresponding marks and the sleeve cap top mark with the shoulder seam. Stitch the sleeve into the armhole 10 mm (3/8") in from the

edge. Stitch from the sleeve side, caring that no folds are formed along the sleeve cap.

12



2,5-3

Pin the back with the fronts and the sleeve along the side edges with right sides together. Stitch the pieces 10 mm (3/8") in from the edge. Repeat the process for the other side seam and the other sleeve side seam.

13



3-3,5

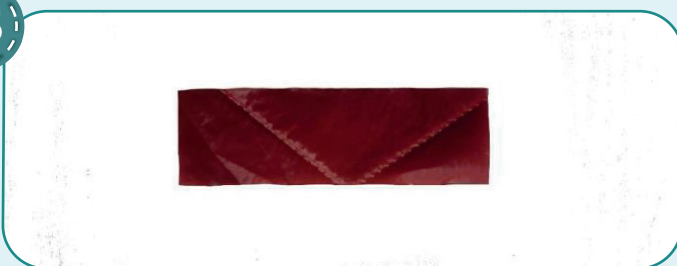
With right sides together, pin the under collar to the garment neckline, aligning the marks. Stitch the under collar in place 10 mm (3/8") in from the edge. Start and finish stitching exactly at the marks.

14



Slash the under collar and the neckline seam allowances every 10-15 mm (3/8-9/16") but stop 1 mm (1/16") before the seam line.

15



Rip the quilted stitching on the belt loop pieces. Leave the shell fabric upper layer.

16



3-3,5

Fold the belt loops in half and tuck them, wrong side inside, pin and topstitch 1 mm (1/16") in from the edge.



17



2,5-3

Draw marks for the belt loop on the garment right side (above the pocket). Bend the belt loop edges by 15 mm (9/16") and stitch 1 mm (1/16") away from the fold. The belt loop should not fit to the coat.

Trim the belt loop ends to 5 mm (3/16"). Repeat the process for the other belt loop.

18

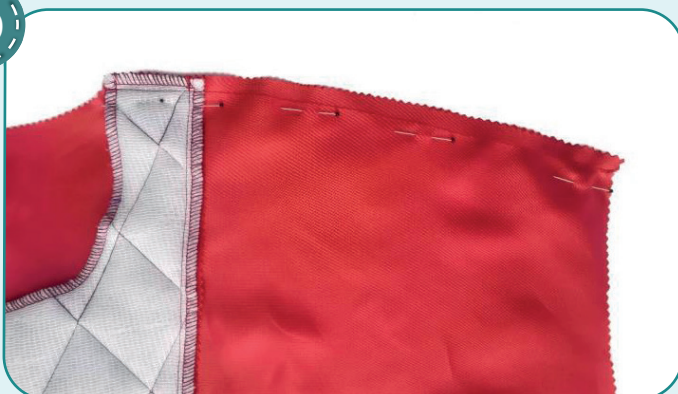


2,5-3

Pin the front facing and the front lining with right sides together. Stitch the pieces 10 mm (3/8") in from the edge. Finish stitching at 10 cm (4") before the lower hem. Repeat the process for the opposite front facing and the front lining. Press the seam allowances towards the lining.



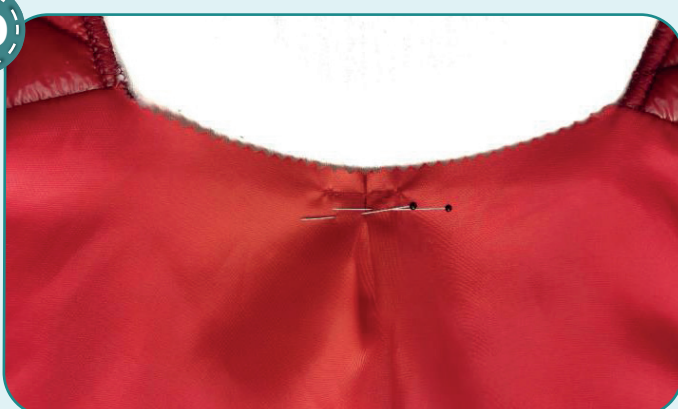
19



2,5-3

Pin the back lining and the front linings along the shoulder edges. Stitch them 10 mm (3/8") in from the edge. Press the seam allowances towards the back.

20



2,5-3

Make two kick pleats at the back lining neckline center (the folds face the center). Stitch them 10 mm (3/8") in from the edge.

COAT CONSTRUCTION

21



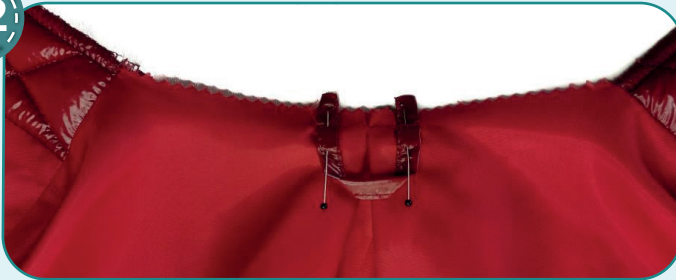
wrong side inside, pin and topstitch 1 mm (1/16") in from the edge.



3-3,5

To make a loop, cut a strip of the shell fabric 30 mm (1 3/16") wide and 100 mm (4") long. Fold the loop in half and tuck it, wrong side inside, pin and topstitch 1 mm (1/16") in from the edge.

22



2,5-3

Pin the prepared loop strip to the lining neckline back center from the right side. Stitch the loop strip 7 mm (1/4") in from the edge.

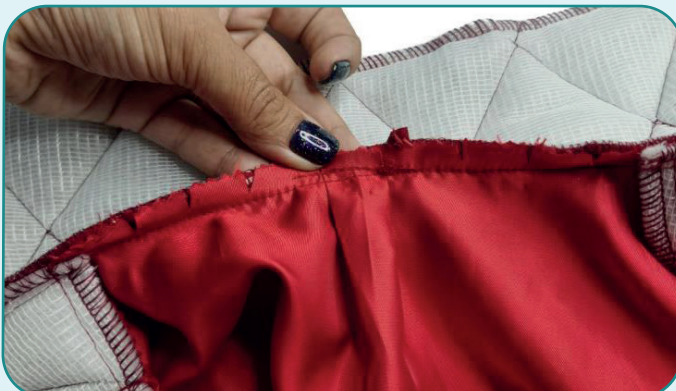
23



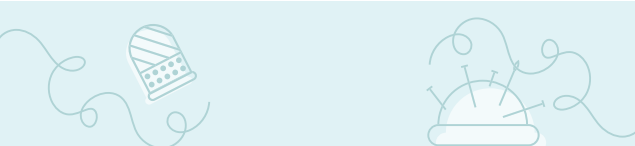
2,5-3

With right sides together, pin the upper collar to the garment lining neckline, aligning the marks. Stitch the upper collar in place 10 mm (3/8") in from the edge. Start and finish stitching exactly at the marks.

24



Slash the upper collar and the neckline seam allowances every 10-15 mm (3/8-9/16") but stop 1 mm (1/16") before the seam line.



25



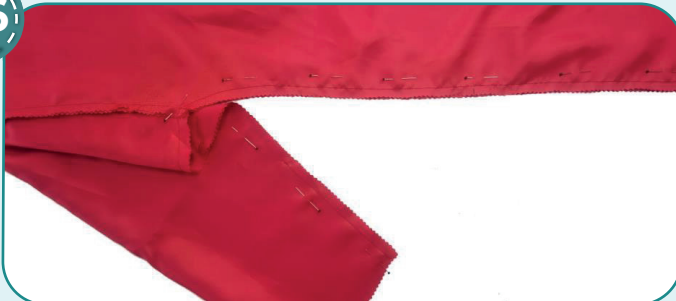
2,5-3

Pin the sleeve lining to the lining armscye with right sides together. Align the corresponding marks and the sleeve cap top mark with the shoulder seam. Stitch the sleeve into the armscye 10 mm (3/8")

in from the edge. Stitch from the sleeve side, care the folds not to be formed along the sleeve cap. Repeat the process for the other sleeve.

NOTE: since the mark on the front lining piece armscye is missing, transfer the mark from the front fabric piece pattern.

26



2,5-3

Pin the back with the front and the sleeve along the side edges with right sides together. Stitch the pieces 10 mm (3/8") in from the edge. Repeat the process for the other side seam and the sleeve side seam. Leave a hole about 15 cm (6") in one of the sleeve side seams to turn the garment out. Press the seam allowances open.

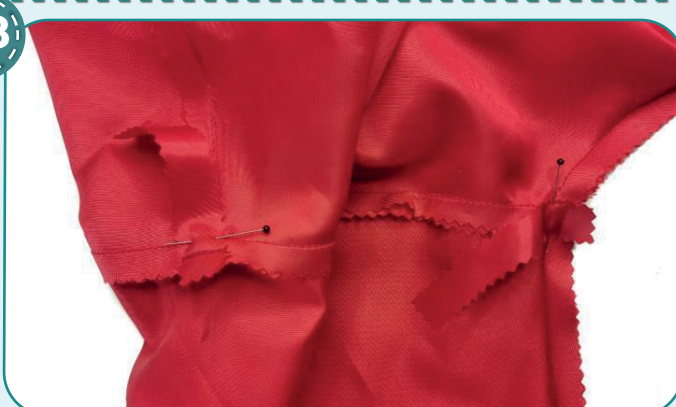


27



To make swing tacks, cut out four strips from the lining fabric about 70 mm (2 3/4") long and about 15 mm (9/16") wide.

28

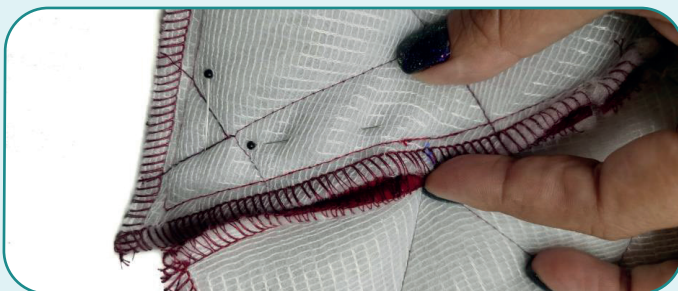


2,5-3

Stitch the swing tacks to the lining armscye underarm seam allowances and to the shoulder seam allowances.



29



3-3,5

With right sides together, pin the upper and under collars, aligning the marks. Shape the upper collar slightly, it means you gather the upper collar to make it equal with the under collar. Stitch the collar pieces 10 mm (3/8") in from the edge. Stitch from the under collar side, starting exactly from the collar attaching seam, but avoid getting onto fronts and the front facing seam allowances.

30



2,5-3

With right sides together, pin the front facing piece and the front along the lapel, the central and lower edges, aligning the marks. Shape the front facing slightly in lapel. Stitch the pieces 10 mm (3/8") in from the edge. Stitch from the front side, starting exactly at the collar attaching seam last stitch, but avoid getting onto the collar seam allowances.

31



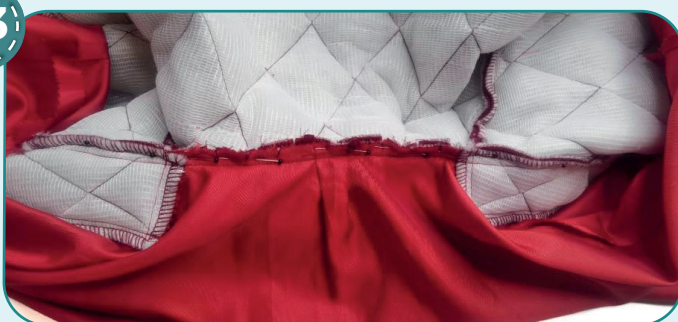
Trim all the corners leaving 2 mm (1/16") before the stitching.

32



Hand-stitch the seam allowances of the front facings and the collar to the insulation with diagonal bastes but avoid catching the fabric outer layer. Stitch the center edge seam allowances to the front facings, lapel seam allowances - to the fronts, collars seam allowances - to the under collar (i.e., to the bottom layer). When stitching the seam allowances, make a small roll towards the bottom layer.

33



Pin the lining back neckline seam allowances to the back neckline seam allowances. Stitch them 7 mm (1/4") in from the marks on the front necklines.

34



Insert the sleeve lining into the sleeve in the way it will be in the finished garment. Align the sleeve seam with the sleeve lining seam. Turn the sleeve and the sleeve lining out together (but do not shift the sleeve lower hems and the sleeve lining) and place them between the coat and its lining (inside the garment). Hand-baste the sleeve to the sleeve lining along the lower hem line with right sides together, inserting the sleeve into the lining and aligning the seams. Stitch the sleeve and the sleeve lining 10 mm (3/8") away from the edge. Repeat the process for the other sleeve.

35



Fold the sleeve lower hem at 4 cm (1 9/16") and hand-baste the edge to the insulation to secure it but avoid catching the fabric outer layer.



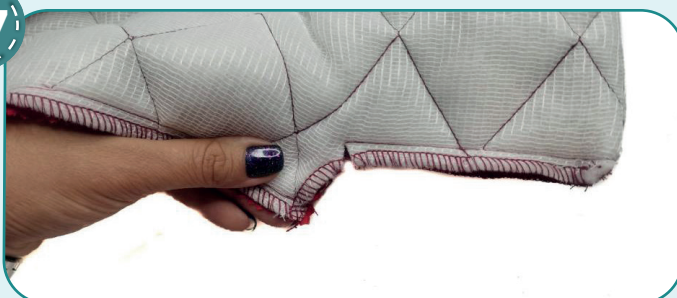
36



2,5-3

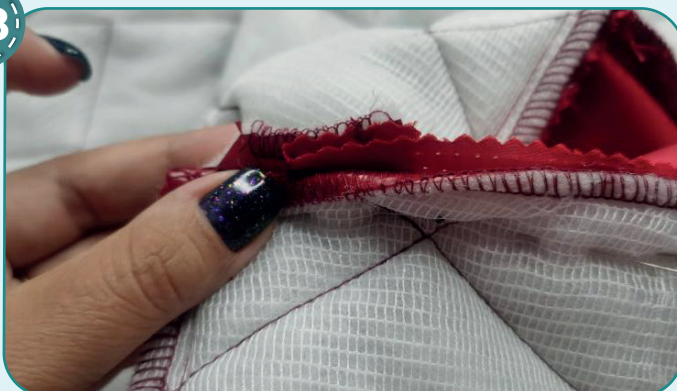
Turn the coat out to the wrong side. Pin the garment lower hem with the lining lower hem with right sides together. Stitch them 10 mm (3/8") away from the edge.

37



Slash the seam allowance at an angle exactly to the end of the front facing attaching seam. Repeat the steps for the opposite front.

38



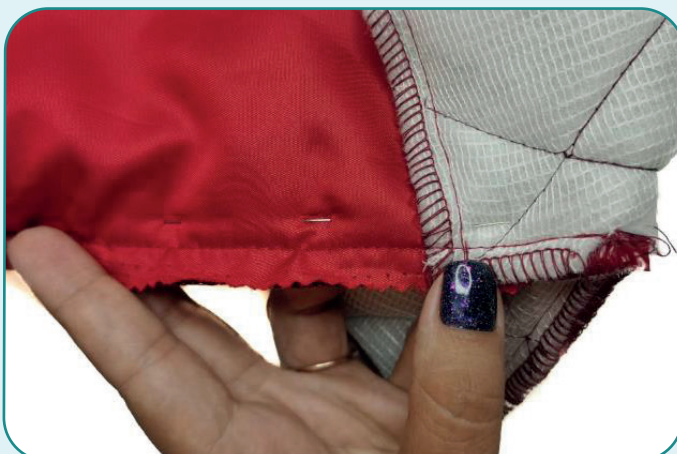
Pin the front facing raw lower edge to the front lining and the front lower hem fold. Form a pleat from excess lining fabric and face the fold down.

39



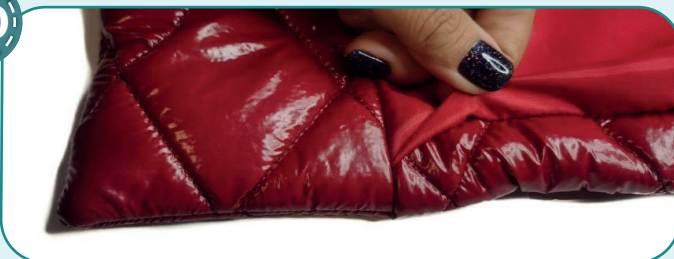
2,5-3

Stitch the front facing to the front lining and the folded front lower hem 10 mm (3/8") in from the edge. Start stitching exactly at the end of the front facing attaching seam. Repeat the process for the other front.





40



This is how this joint should look from the right side.

41



Hand-baste the front facing lower hem seam allowances to the front facing insulation layer.

42



Fold the garment lower hem at 4 cm (1 9/16") and hand-baste the edge to the insulation to secure it, but avoid catching the fabric outer layer.

43



2,5-3

Stitch the swing tacks to the garment underarm and the shoulder seam allowances. Turn the garment out to the right side.

44



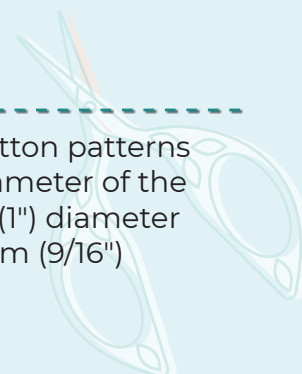
2,5-3

Pin the hole for turning the garment out aligning the folds. Stitch them 1 mm (1/16") away from the edge.

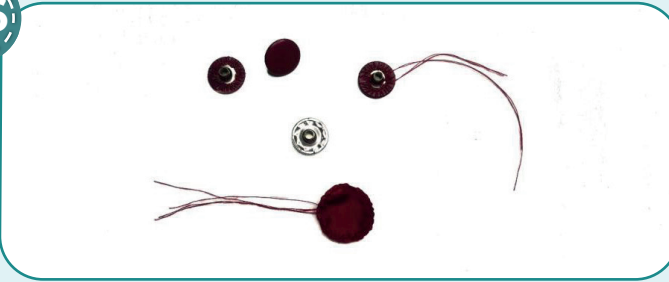
45



Cut out the shell fabric button patterns slightly larger than the diameter of the snap buttons. Cut 25 mm (1") diameter shell fabric pieces for 15 mm (9/16") diameter snap buttons.



46



Leaving 50 mm (2") thread tails, stitch a gather thread around the edge 2 - 3 mm (1/16-1/8") in from the edge. Place the snap button top on the fabric piece and pull up the gathers, pulling the upper thread tails at the same time and then tie them together making several knots. Then tie the lower thread tails together and make several knots. Trim the thread tails.

3-3,5

47



Transfer the marks for the snap buttons onto the fronts. Pay attention to the aligning the quilted lines with the coat lower hem. Fold the lapels, place the coat edges, forming a roll towards the front facing. Pin the front and the front facing layers next to the marks at the desired place. Punch 2-2.5 mm (1/16-1/8") holes with a Hole Punch. Attach the snap buttons with a press.

NOTE: the pattern is given with the marking for 4 snap buttons. It was decided to attach 6 snap buttons to this garment.

48



3 2,5-3,5 7

Rip the quilted lines on the tie belt. Take the scraps of the fabric, left after cutting, and iron them to choose the necessary temperature setting. Leave the upper layer for the tie belt and cut the insulation in half, lengthwise, and use one half. Pin the insulation to the tie belt wrong side and serge them.

NOTE: in this garment the tie belt is cut in one piece on the fold. If it is made from two pieces in your garment, then the tie belt pieces should be stitched along the short edges after this step.

49



3-3,5

Fold the belt lengthwise, right side inside. Stitch it along the outline 10 mm (3/8") in from the edge, leaving a hole about 50 mm (2") long. Use matching thread with the color of the garment right side.

50



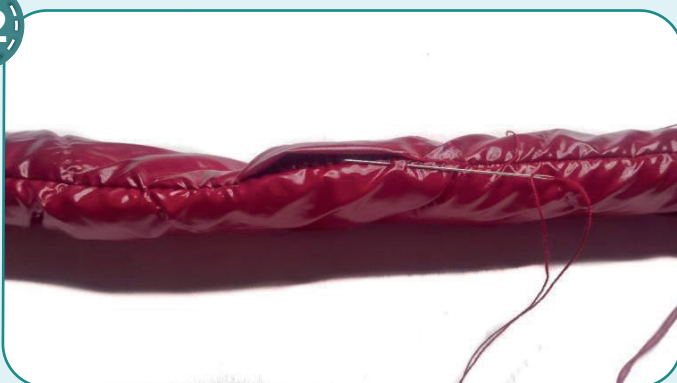
Trim the corner seam allowances but stop 2 mm (1/16") before the stitching.

51



Turn the tie belt out and smooth it.

52



Hand baste the hole in the tie belt with a blind stitch.



53



Remove the basting stitches, trim, and hide the thread tails. Insert the tie belt through the belt loops. The coat is ready!



ELINA PATYKOVA

ПРО ШИТЬЕ

Coat Style

Thank you for joining my
team and me!
Share your works in my
groups. Hope you will stay
with us for our next project!



ELINA_PATKOVA



ELINA-PATKOVA.RU



VK.COM/ELINA_PATKOVA