

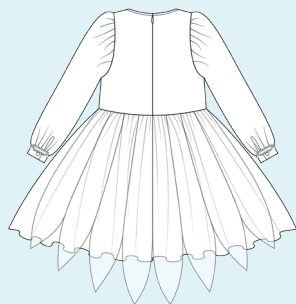
ELINA PATYKOVA

ПРО ШИТЬЕ

Instructions
for sewing

Dress Snowflake

#патыкова_снежинка



Skill level



ELINA_PATKOVA



ELINA-PATKOVA.RU



VK.COM/ELINA_PATKOVA

Materials and notions



- satin
- tulle
- fusible interfacing
- invisible zipper
- bias binding - 50 cm (20")
you can make it from satin
- buttons - 10 mm (3/8") - 2 pcs.,
- feather trim boa
- matching thread
- Universal 80 needles

If you are not sure about the fit of the garment, it is recommended to sew a muslin with similar properties (elasticity, thickness, drape) first. This will allow you

to adjust the length, width and fit of the garment and save time.



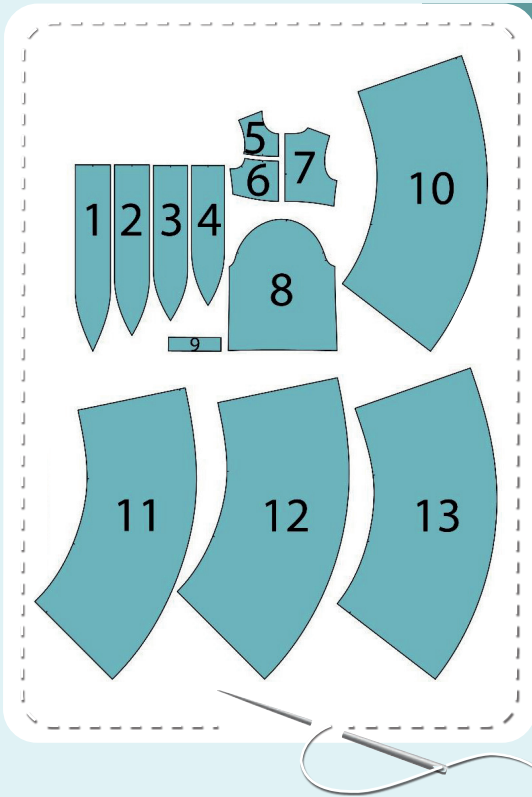
To find out how long a piece of fabric to take, you should place the pattern pieces onto the table, the floor or bedspread, pre-measured width equal to half the width of the selected fabric. Place the pieces, caring the direction of the grain line, their number, i.e., the way you will place them when cutting. Measure the length of the pattern pieces fit, add to this length 5% for the fabric shrinkage - this will be the required amount of fabric for the project. How to cut: Print and glue

all the paper patterns. When printing, do not forget to check the size of the test square.

Put the paper pattern pieces onto the fabric. It is important to check that the grain is straight. Pin the paper pattern pieces to the fabric gently and cut the fabric along them. Note: seam allowances are already included. Transfer all the marks from the pattern onto the wrong side of your fabric.

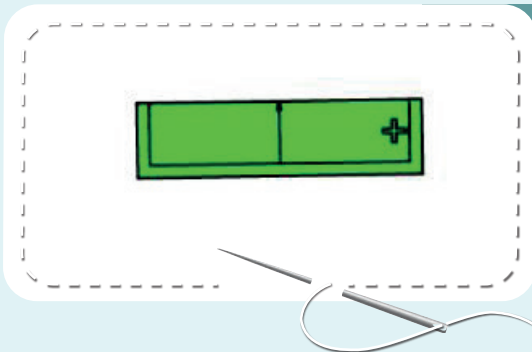


Now you have



DRESS PIECES:

1. skirt train 1 (center) – cut 4 (tulle fabric)
2. skirt train 2 – cut 4 (tulle fabric)
3. skirt train 3 – cut 4 (tulle fabric)
4. skirt train 4 (side) – cut 4 (tulle fabric)
5. front yoke - cut 1 on the fold (tulle fabric)
6. bodice front - cut 1 on the fold (satin)
and cut one on the fold (tulle fabric)
7. bodice back - cut 2 (tulle fabric) and cut 2 (satin)
8. sleeve - cut 2 (tulle fabric)
9. cuff - cut 2 on the fold (satin)
10. half slip front - cut 1 on the fold (satin)
11. half slip back - cut 2 (satin)
12. skirt front panel - cut 4 on the fold (tulle fabric)
13. skirt back panel - cut 8 (tulle fabric)



PIECES TO INTERFACE :

- Green - knit fusible interfacing
- cuffs

Construction

Symbols



straight stitch



the stitch length in (mm)



flat lock stitch



zigzag stitch



the stitch width in (mm)



3-Step Zigzag Seam Finishing



unilateral zipper presser foot



universal presser foot



invisible zipper presser foot



pinning

You should lockstitch the seam and trim the thread tails or tie the seam thread tails and hide them into the seam after sewing a serger stitch or cover seaming chain stitch.



double welting (piping) presser foot



3-thread serger stitch



4-thread serger stitch

NOTE

A

4-thread serger stitch

If you do not have a serger, you can use stretch stitches available on your sewing machine, or at least, a zigzag stitch.

B

3-thread serger stitch

If you do not have a serger, you can replace it with an overedge stitch, or a zigzag stitch.

C

flat lock stitch

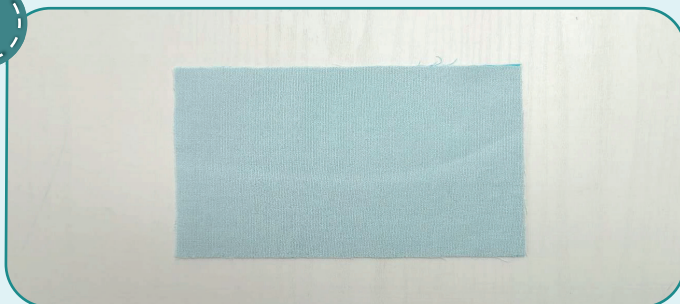
If you do not have a coverstitch machine, the flat seam can be performed with a) a twin needle on a sewing machine, b) decorative stretch seam on a sewing machine, c) finish the seams with serger and stitch them with a straight stitch.



Dress construction



1



Duplicate the cuffs.

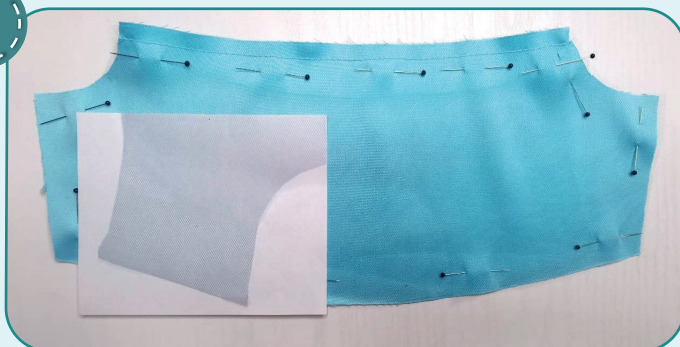
2



Pin together the bodice back satin and tulle pieces (place the tulle piece to the satin piece right side). Stitch along the perimeter 5 mm (3/16") in from the edge.

NOTE: If you lack experience, it is better to hand-baste before stitching.

3



Pin together both bodice front pieces (place the tulle piece to the satin piece right side). Pin the front yoke to the right side. Stitch all three layers together 7 mm (1/4") in from the edge.

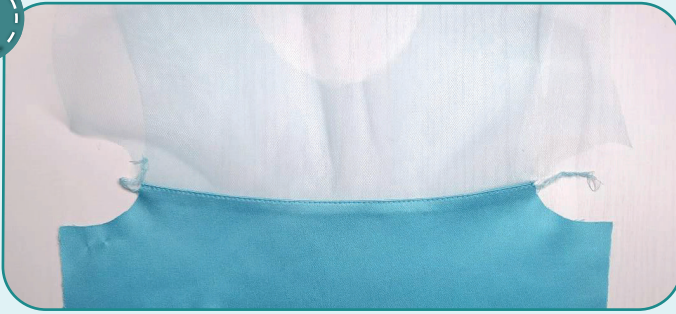
4



Finish the seam allowances together with serger. Press them onto the bodice front.



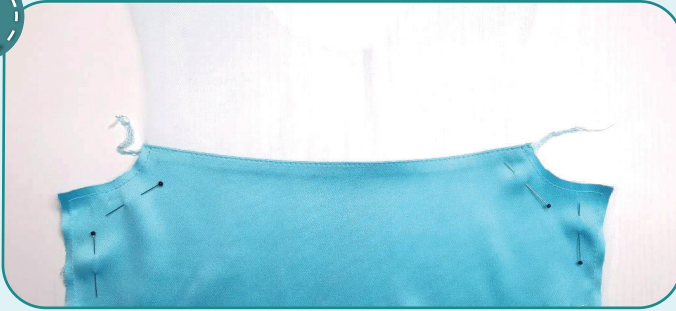
5



2,5-3

Fold both tulle pieces (bodice and yoke) upwards. Stitch along the satin bodice piece seam allowance 1 mm (1/16") in from the edge. Press it.

6



2,5-3

Stitch tulle bodice front on the satin bodice front, sewing along the raw edges. Stitch 5 mm (3/16") in from the edge.

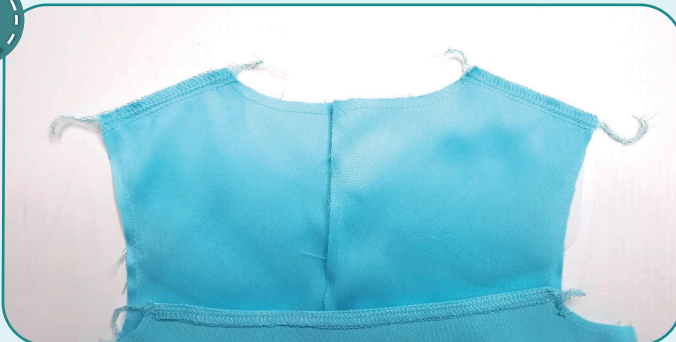
7



2,5-3

Pin the front and back pieces along the shoulder edges with right sides together. Stitch them 10 mm (3/8") in from the edge.

8



3-4



7

Finish the shoulder edges together with serger. Press the shoulder seams onto the back.

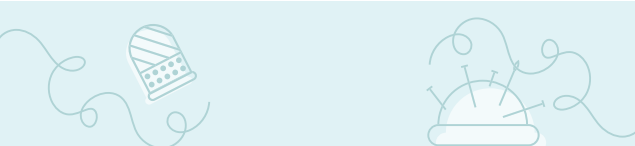
9



2,5-3

Pin the back and the front along the side edges with right sides together. Stitch them 10 mm (3/8") in from the edge.





10



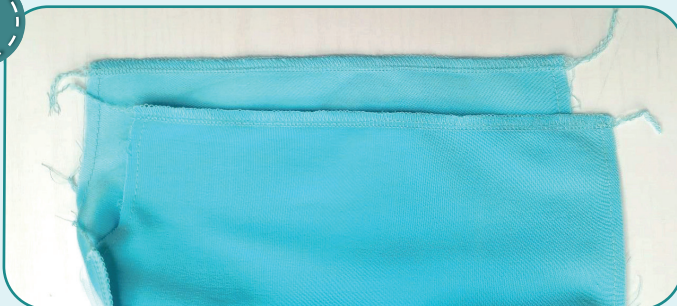
3-4



7

Finish the side edges together with serger. Press the side seams onto the front.

11



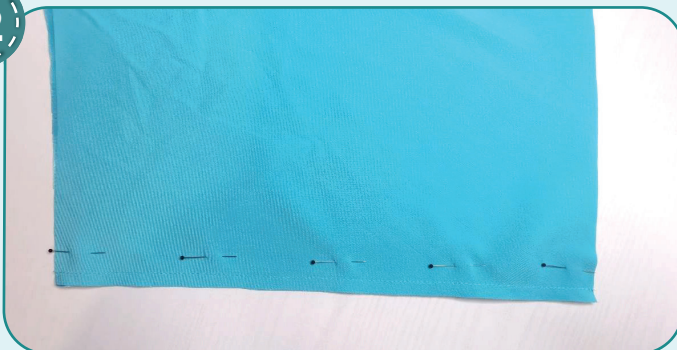
3-4



7

Finish the back center edges with serger. Press them.

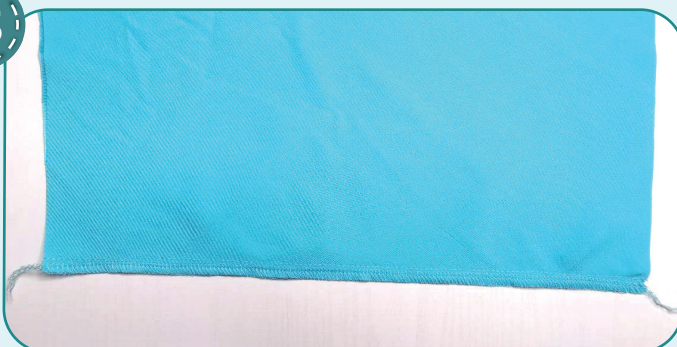
12



2,5-3

Pin the front and back half slip pieces along the side seams with right sides together. Stitch them 10 mm (3/8") in from the edge. Repeat the process for the opposite side seam.

13



3-4



7

Finish the side edges together with serger. Press the side seams onto the back.

14



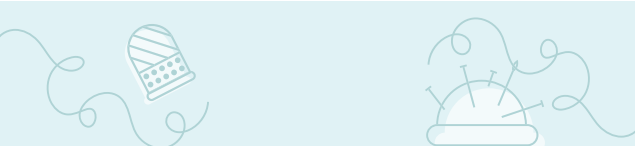
3-4



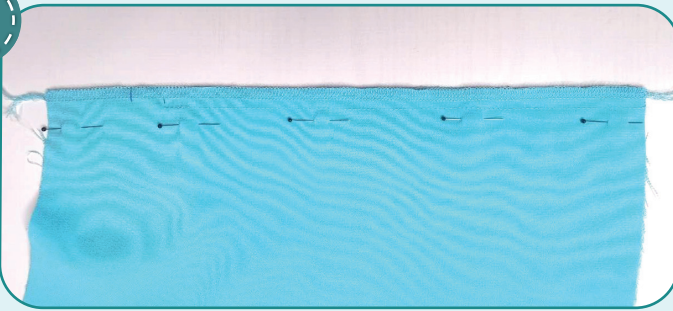
7

Finish the half slip back center edges with serger.





15



2,5-3

Stitch the half slip back center edges 12 mm (1/2") in from the edge. Finish stitching 20 mm (13/16") below the zipper bottom stop. Press the seam allowances open.

16



3-4



7

Finish the half slip lower hem with serger. Press it.

17



2,5-3

Pin or hand-baste the half slip lower hem at 20 mm (13/16"). Press it. Topstitch the lower hem 15 mm (9/16") in from the edge. Press it.

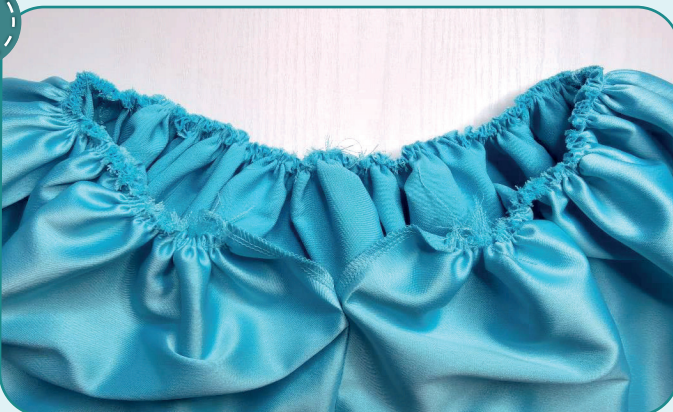
18



4-5

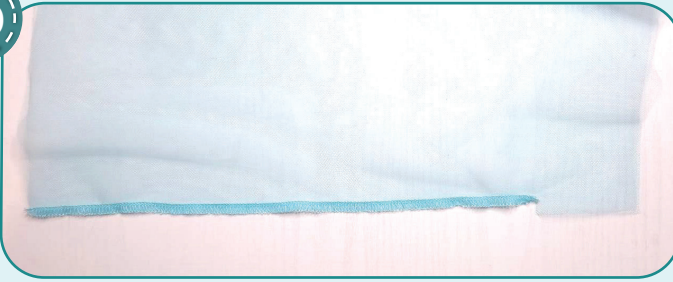
Stitch two parallel seams along the half slip upper edge 3 mm (1/8") and 5 mm (3/16") in from the edge. Set maximum stitch length 4-5 mm, do not bar tack at the ends of the seams and leave the thread tails at least 50 mm (2") long.

19



Tighten the half slip upper edge to the length indicated on the pattern, pulling on the ends of the upper threads of the parallel seams, previously made. Tie the thread tails. Spread the gathers along the upper edge. Press the gathers to have the flatter half slip upper edge.

20



2,5-3,5



5

Slash the skirt back center edges 20 mm (13/16") below the zipper bottom stop at 12 mm (1 1/2"). Stitch the skirt back center edges with serger trimming the seam allowances at 5-6 mm (3/16-1/3"). Finish serging at the slash level. Repeat the

process for the other three layers of the skirt back pieces. Seam allowances are pressed alternately on the right and left sides.

21



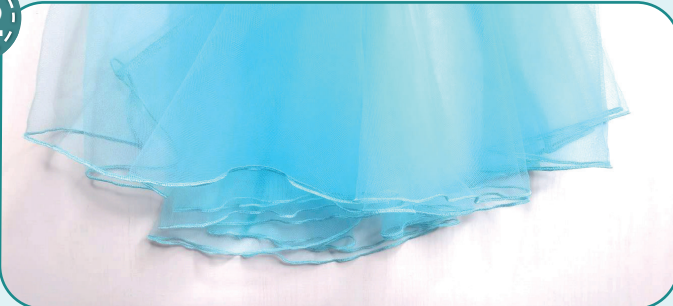
2,5-3,5



5

Place the skirt fronts and backs along the side edges with right sides together and serge them. Repeat the process for the other three layers of the skirt pieces. Seam allowances are pressed alternately on the front and back.

22



0,5

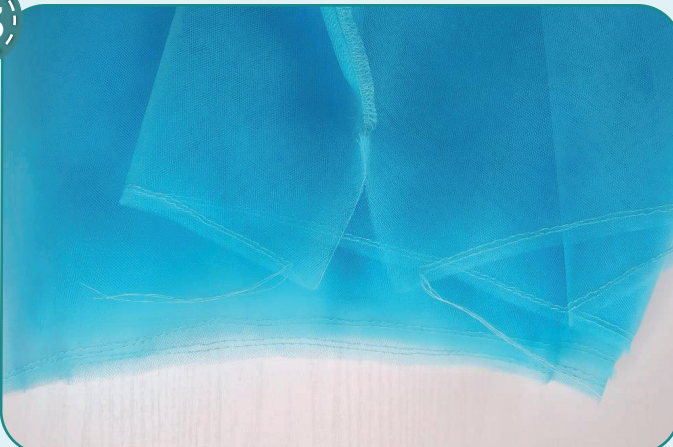


5

Finish all the skirt layer lower hems with a rolled hemming stitch or fine zigzag stitch.

NOTE: to perform the rolled hemming stitch, remove the left needle on your serger, retract the knife, and switch to the rolled hemming stitch mode. You can read the detailed instructions in the operation manual to your serger.

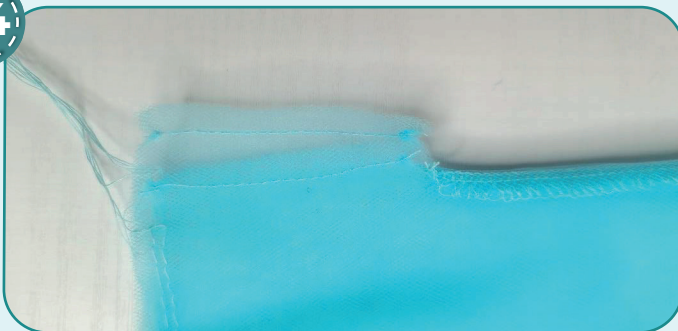
23



4-5

Pin or hand-baste all the skirt pieces aligning their upper edges. Stitch two parallel seams along the skirts upper edges 3 mm (1/8") and 5 mm (3/16") in from the edge. Set maximum stitch length 4-5 mm, do not bar tack at the ends of the seams and leave the thread tails at least 50 mm (2") long.

24



2,5-3

Affix all four skirt layers together at zipper attaching area with a straight stitching 7 mm (1/4") in from the edge.

25



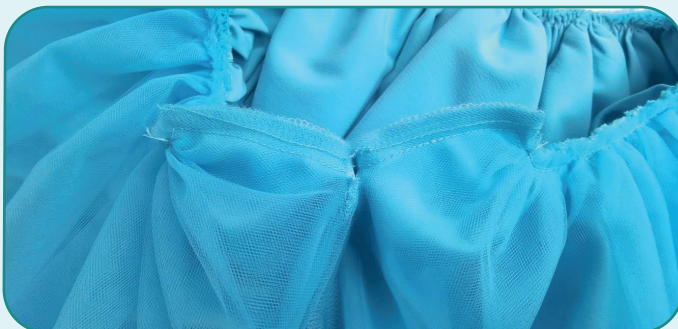
Tighten the skirt upper edge to the length indicated on the pattern, pulling on the ends of the upper threads of the parallel seams, previously made. Tie the thread tails. Spread the gathers along the upper edge.

26

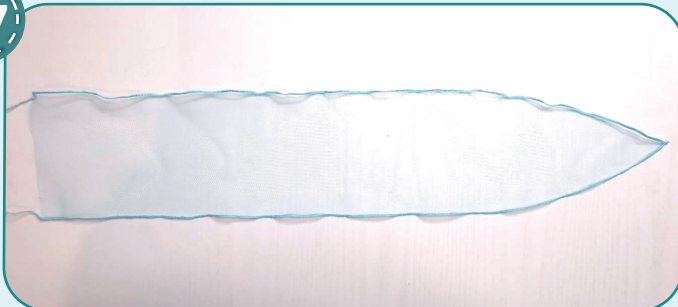


2,5-3

Align both skirt and half slip upper edges and stitch them 5 mm (3/16") in from the edge. Affix them at the zipper attaching area.



27



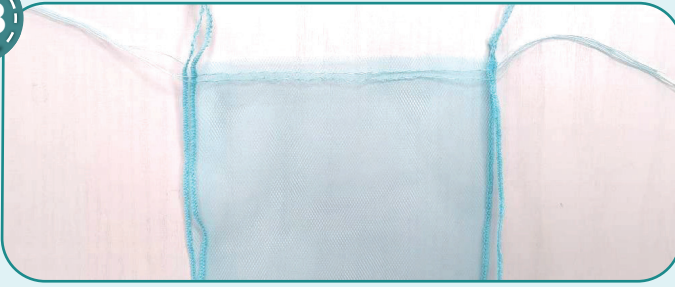
0,5



5

Use the rolled hemming stitch or a fine zigzag stitch to finish skirt train pieces. Here is how all the 16 pieces edges look like.

28



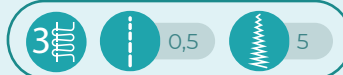
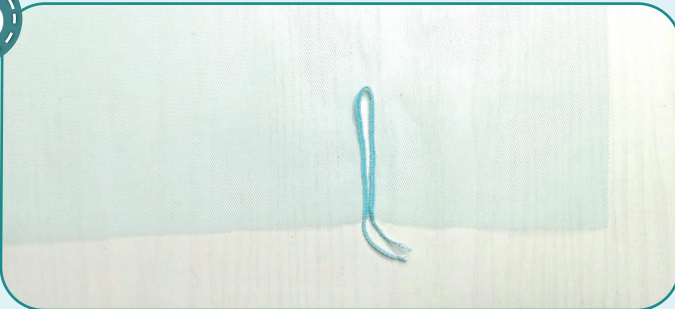
Pin all the skirt train pieces of the same size together in pairs aligning their upper edges. Stitch two parallel seams along the skirt train upper edges 3 mm (1/8") and 5 mm (3/16") in from the edge. Set maximum stitch length 4-5 mm, do not bar tack at the ends of the seams and leave the thread tails at least 50 mm (2") long.

29



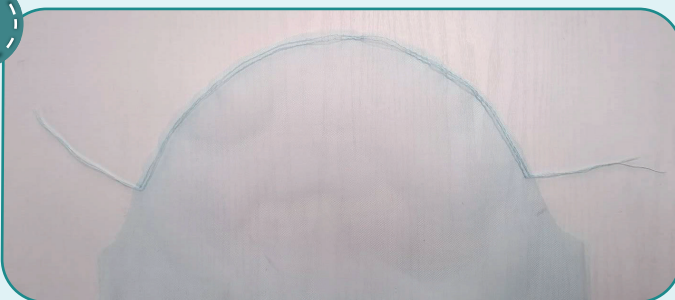
Tighten the skirt train upper edges to the length indicated on the pattern, pulling on the ends of the upper threads of the parallel seams, previously made. Tie the thread tails. Spread the gathers along the upper edge.

30



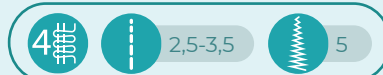
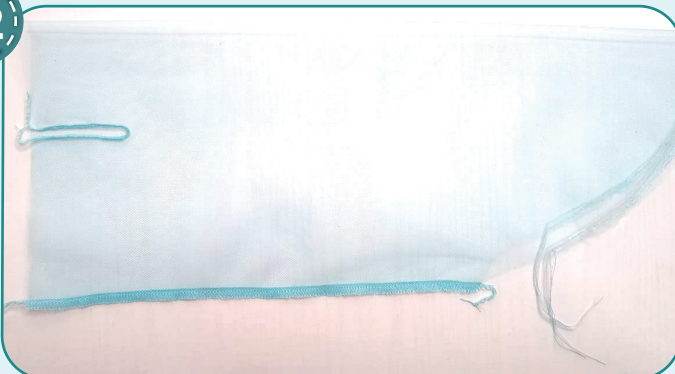
Use the rolled hemming stitch to finish the sleeve split. When serging, place it forming a straight line. Repeat the process for the other sleeve split.

31

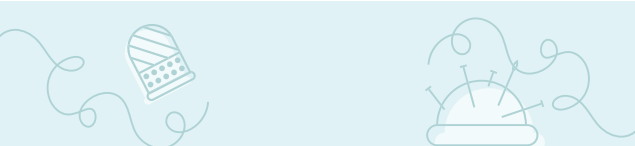


Stitch two parallel seams along the sleeve cap between the marks 5 mm (3/16") and 7 mm (1/4") in from the edge. Set maximum stitch length 4-5 mm, do not bar tack at the ends of the seams and leave the thread tails at least 50 mm (2") long.

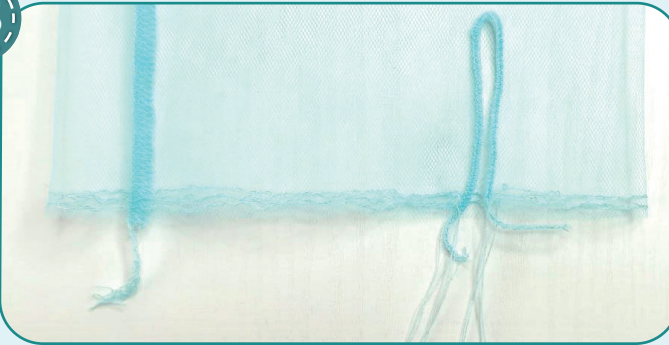
32



Pin the sleeve along the side edges with right side inside. Serge the pieces. Press the seam allowance to the back.

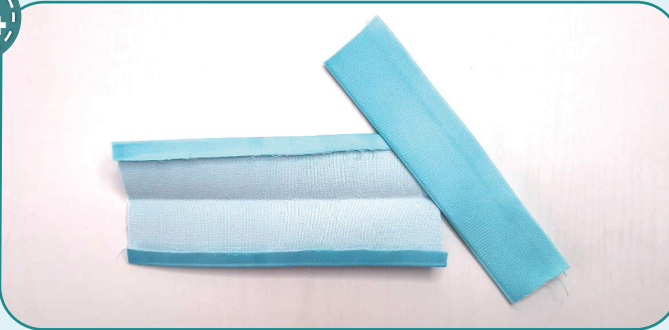


33



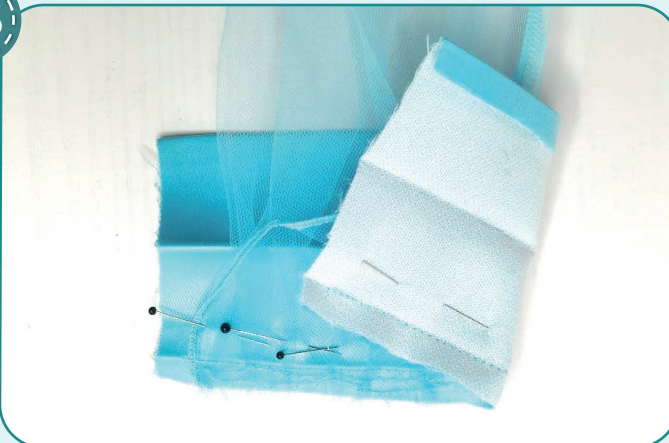
Stitch two parallel seams along the sleeve lower hem (from the split all way around) 4 mm (3/16") and 6 mm (1/4") in from the edge. Set maximum stitch length 4-5 mm, do not bar tack at the ends of the seams and leave the thread tails at least 50 mm (2") long.

34



Press the cuffs long edges seam allowances to the wrong side at 10 mm (3/8"). Then press them in half.

35



Tighten the sleeve lower edge to the length indicated on the pattern. Tie the thread tails. Spread the gathers along the lower edge. Pin the cuff to the sleeve with right sides together, aligning the mark with the side seam. Stitch it along the fold 10 mm (3/8") in from the edge. Press the seam allowances onto the cuff.

36



Fold the cuff in half, right side inside. Pin the short edges. Stitch the short edges 10 mm (3/8") in from the edge.

37



Trim the cuff seam allowances from the right side to 3-4 mm (1/8"). Trim the seam allowance corners.



38



2,5-3

Turn the cuff out and press it. Hand-baste the cuff raw edge overlapping the sleeve attaching seam. Stitch the cuff edge 1 mm (1/16") in from the edge. Stitch from the right side. Make sure that the stitching is good on both sides. Press it.

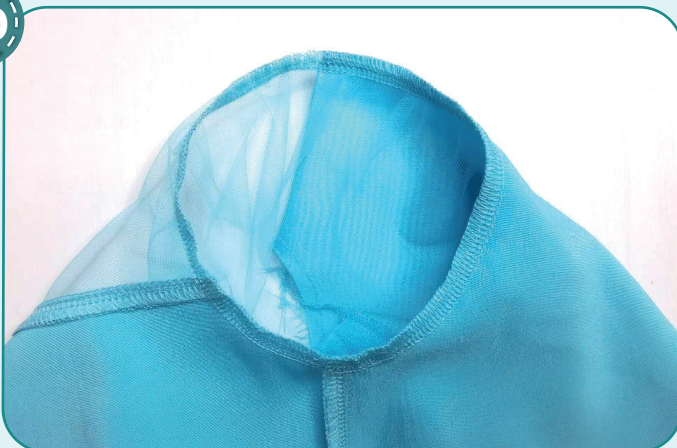
39



2,5-3

Pin the sleeve into the armhole with right sides together. Align the side seams and the check marks. Tighten the gathers to make the sleeve cap fit the armhole, pulling the thread tails of two parallel rows previously made. Tie the thread tails. Spread the gathers along the sleeve cap. Pin or baste along the sleeve cap. Stitch the sleeve into the armhole 7 mm (1/4") in from the edge. Stitch from the sleeve side.

40



2,5-3,5



5

Finish the edges with serger. Press the seam allowances on the edge. Repeat the process for the other sleeve (steps 31-40).

41

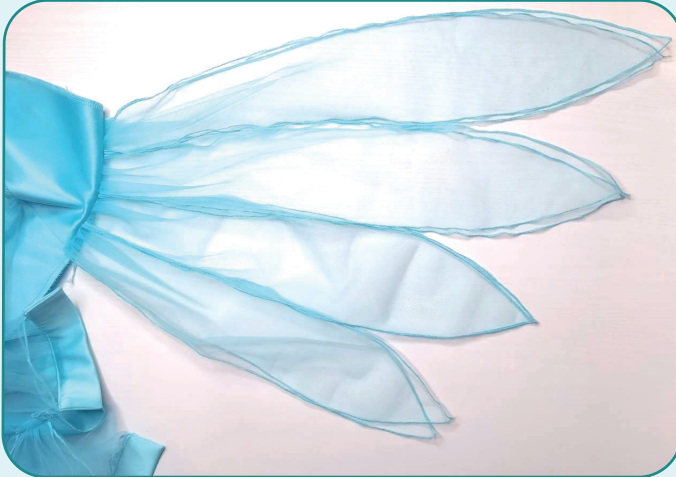


Working from the right side, transfer the marking lines for the skirt train from the pattern onto the bodice back lower edge.

42



Pin the skirt train pieces to the bodice back lower edge. Begin pinning from the biggest pieces in the center and finish with the smallest ones near the side seam.



43



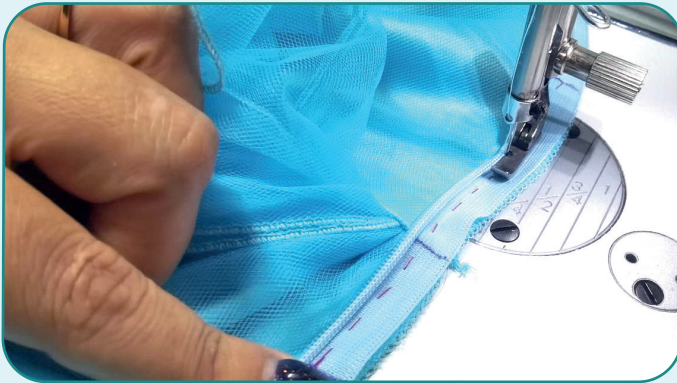
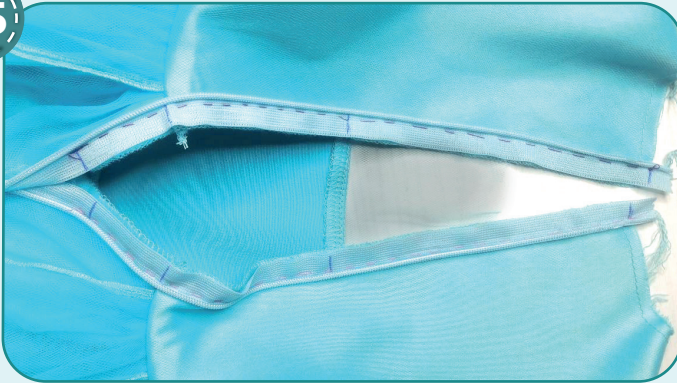
Pin the bodice to the skirt with right sides together aligning the side edges. Stitch them 10 mm (3/8") in from the edge.

44



Finish the edges with serger. Press the seam allowances on the edge. Press the seams upwards.

45



2,5-3

Open the zipper and place one tape to the bodice back center edge with right sides together. Hand-baste the zipper between the marks aligning the edges. When hand-basting, carefully align the zipper with the fabric, but avoid tightening and gathering the fabric, for the zipper not to be in waves and creases. Stitch it with unilateral zipper presser foot (exactly from mark to mark). Use unilateral zipper presser foot, not a zipper foot, for slider not get caught in the tulle and the zipper opened easily in the seam area during use. When closed up, the zipper tape on the right side should be visible by 2 mm (1/16"). Transfer the check marks from the piece onto the attached zipper tape: upper bodice edge, zipper center, skirt attaching seam, the end of the seam. Close the zipper and mirror the

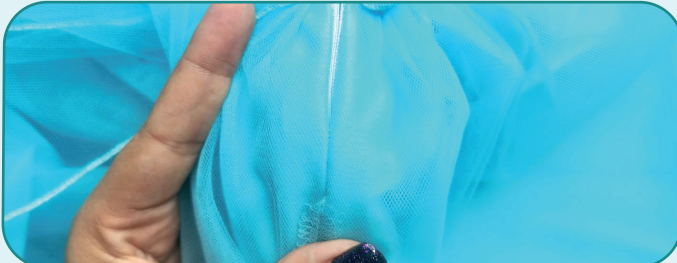
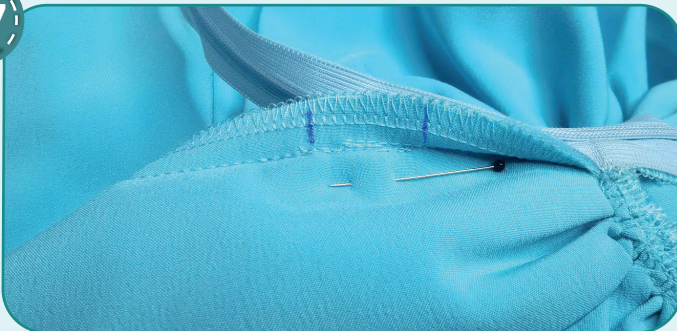
marks onto the other tape. Hand-baste the other zipper tape to the garment back with right sides together accurately aligning the marks. Stitch it with unilateral zipper presser foot.

46



Close the zipper, make sure the skirt attaching seams match and the zipper is flat, not in waves. Press the zipper.

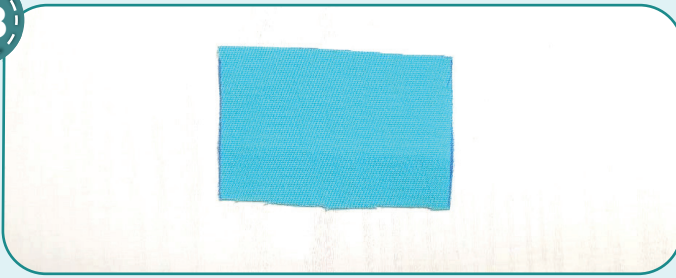
47



2,5-3

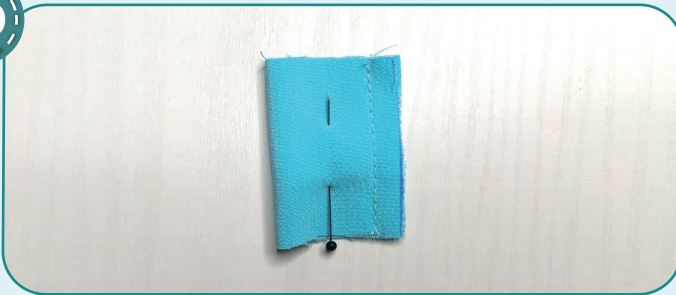
Hand-baste the skirt center seam below the zipper. Care all the skirt and half slip layers get into the seam. Stitch them 12 mm (1/2") in from the edge with unilateral zipper presser foot. Finish stitching exactly at the beginning of the zipper attaching seam.

48



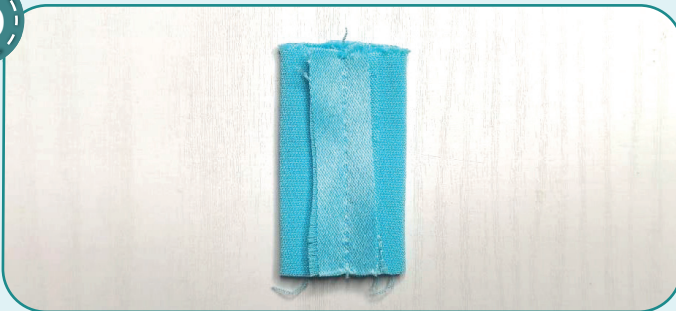
Cut the piece from satin fabric 65 mm (2 9/16") long and 40 mm (1 9/16") wide.

49



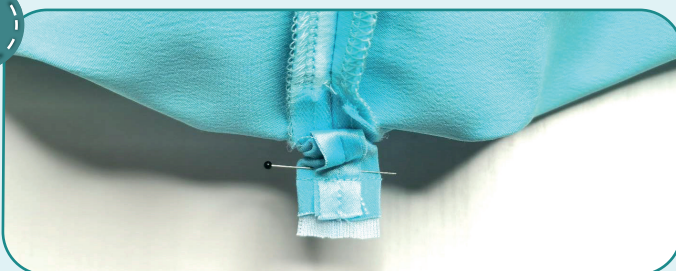
Fold it in half with right side inside and stitch in a ring along the short edges. Stitch the seam 7 mm (1/4") in from the edge.

50



Press the seam open, place it in the center and press the piece.

51



Trim excess zipper bottom, having left the end about 30 mm (1 3/16"). Insert the zipper end into the piece and affix it with a straight stitch as far from the edge as possible.



52



Fold the fabric to the right side to have the zipper end hidden inside.

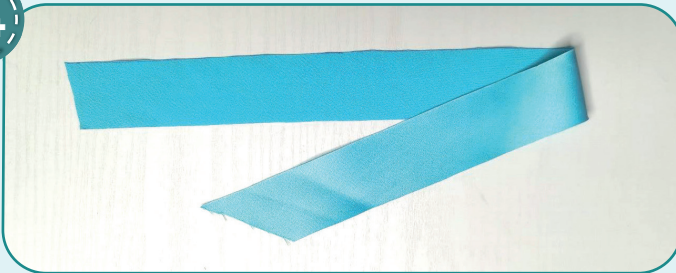
53



2,5-3

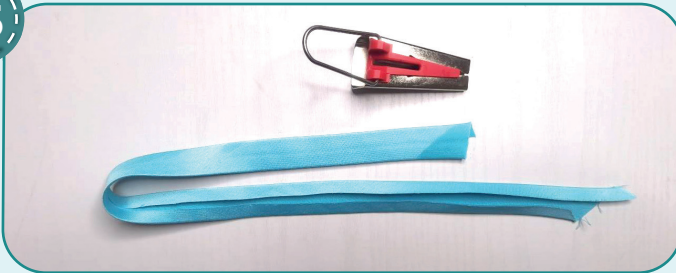
Tuck the raw edges inside. Stitch them 1mm (1/16") in from the edge.

54



If it was not possible to find bias binding matching the fabric, you can cut out a strip of satin fabric for it with a length equal to the garment neckline length + 20 mm (13/16"), and a 35 mm (1 3/8") wide.

55



For convenience you can press the bias binding edges to the center of the wrong side. It is easier to do this if you have a special tool for pressing the bias binding.

56



Working from the right side hand-stitch the bias binding to the garment neckline.

57



2,5-3

Stitch the bias binding 5 mm (3/16") in from the edge, stitching exactly atop it's fold.



58



2,5-3

Tuck the bias binding around the seam allowance raw edge and hand-baste it overlapping the attaching seam. Tuck the bias binding ends inside. Stitch the bias binding 1 mm (1/16") in from the edge. Remove the basting stitches and press the neckline.

59



Transfer the marking for the buttonholes from the pattern onto the cuffs. Use the buttonholing presser foot to make the buttonholes with the size of the buttons prepared. Make the buttonholes with a seam ripper but care not to cut the seam threads. Press it. Hand-stitch or use a sewing machine to sew the buttons.

60



If desired, you can decorate the dress with feather fringe trim. Hand stitch the feather fringe trim along the cuff upper edge and along the front yoke edges.

61



Remove the basting stitches, trim and hide the thread tails and press the garment once again. The dress is ready!



ELINA PATYKOVA

ПРО ШИТЬЕ

Dress Snowflake

Thank you for joining my
team and me!
Share your works in my
groups. Hope you will stay
with us for our next project!



ELINA_PATKOVA



ELINA-PATKOVA.RU



VK.COM/ELINA_PATKOVA