

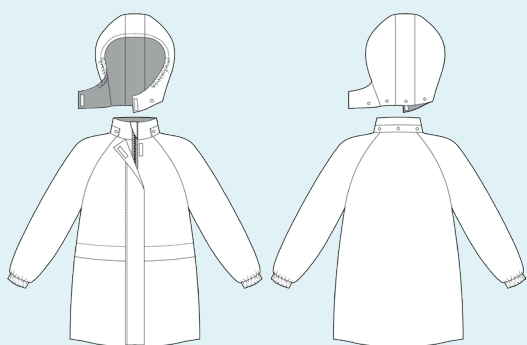
ELINA PATYKOVA

ПРО ШИТЬЕ

Instructions
for sewing

Jacket Pocket

#патыкова_pocket



Skill level



Materials and notions



- shell fabric (Dewspo, membrane fabric, twill etc.)
- polyester insulation 150-200 g (alpolux, polyester batting, meida etc.)
- lining fabric
- open-end zipper
- elastic 1,5 cm (9/16") wide
- elastic 2 cm (13/16") wide
- elastic 3 cm (1 3/6") wide
- Alfa snap buttons 12,5 mm (1/2") - 6 pcs.
- Velcro (hook-and-loop tape) 2 cm wide (13/16") and 22 cm (8 3/4") long
- matching thread
- Microtex 70-80 needles

If you are not sure about the fit of the garment, it is recommended to sew a muslin with similar properties (elasticity, thickness, drape) first. This will allow you

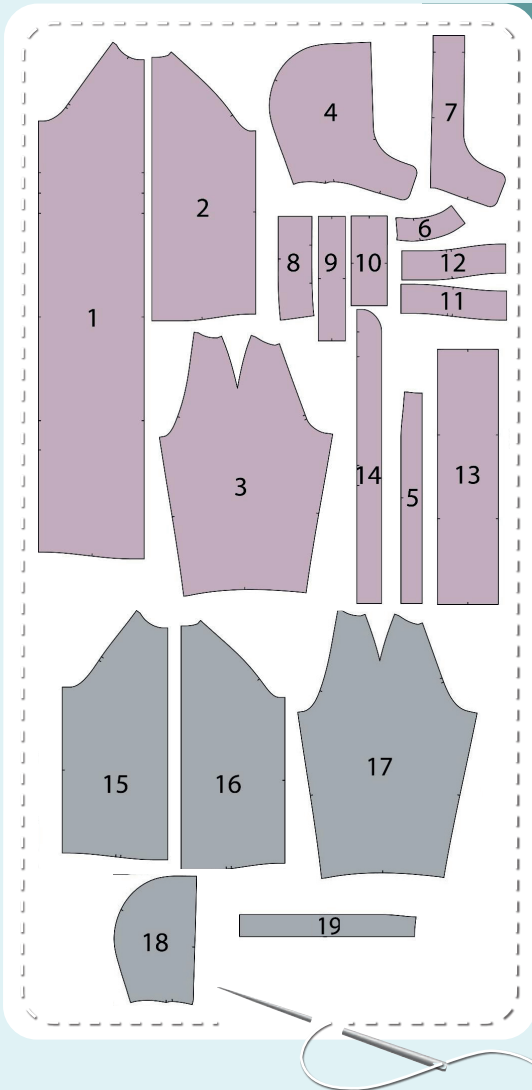
to adjust the length, width and fit of the garment and save time.

To find out how long a piece of fabric to take, you should place the pattern pieces onto the table, the floor or bedspread, pre-measured width equal to half the width of the selected fabric. Place the pieces, caring the direction of the grain line, their number, i.e., the way you will place them when cutting. Measure the length of the pattern pieces fit, add to this length 5% for the fabric shrinkage - this will be the required amount of fabric for the project.

How to cut Print and glue all the paper patterns. When printing, do not forget to check the size of the test square.

Put the paper pattern pieces onto the fabric. It is important to check that the grain is straight. Pin the paper pattern pieces to the fabric gently and cut the fabric along the outline. Note: seam allowances are already included. Transfer all the necessary marks from the pattern onto the wrong side of your fabric.

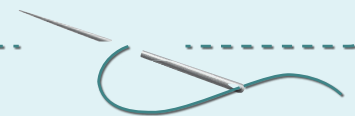
Now you have



JACKET PIECES:

- 1. front** - cut 2 (shell fabric) and cut 2 (insulation)
- 2. back** - cut 1 on the fold (shell fabric) and cut 1 on the fold (insulation)
- 3. sleeve** - cut 2 (shell fabric) and cut 2 (insulation)
- 4. hood** - cut 2 (shell fabric) and cut 2 (insulation)
- 5. hood center piece** - cut 1 on the fold (shell fabric) and cut 1 on the fold (insulation)
- 6. hood lower hem facing** - cut 1 on the fold (shell fabric)
- 7. hood facing** - cut 1 on the fold (shell fabric)
- 8. stand collar** - cut 2 on the fold (shell fabric) and cut 1 on the fold (insulation)
- 9. hood casing** - cut 1 on the fold (shell fabric) and cut 1 on the fold (insulation)
- 10. sleeve cuff** - cut 2 (shell fabric)
- 11. front lower hem facing** - cut 2 (shell fabric)
- 12. back lower hem facing** - cut 1 on the fold (shell fabric)
- 13. storm flap** - cut 1 (shell fabric) and cut 1 (insulation)
- 14. zipper guard** - cut 2 (shell fabric) and cut 1 (insulation)
- 15. front lining** - cut 2 (lining fabric)
- 16. back lining** - cut 1 on the fold (lining fabric)
- 17. sleeve lining** - cut 2 (lining fabric)
- 18. hood lining** - cut 2 (lining fabric)
- 19. hood center lining** - cut 1 on the fold (lining fabric)

NOTE: cut the insulation rough + 2-3 cm (13/16-1 3/16") to the allowances.



Construction

Symbols



straight stitch



the stitch length in (mm)



flat lock stitch



zigzag stitch



the stitch width in (mm)



3-Step Zigzag Seam Finishing



unilateral zipper presser foot



universal presser foot



invisible zipper presser foot



pinning

You should lockstitch the seam and trim the thread tails or tie the seam thread tails and hide them into the seam after sewing a serger stitch or cover seaming chain stitch.



double welting (piping) presser foot



3-thread serger stitch



4-thread serger stitch

NOTE

A

4-thread serger stitch

If you do not have a serger, you can use stretch stitches available on your sewing machine, or at least, a zigzag stitch.

B

3-thread serger stitch

If you do not have a serger, you can replace it with an overedge stitch, or a zigzag stitch.

C

flat lock stitch

If you do not have a coverstitch machine, the flat seam can be performed with a) a twin needle on a sewing machine, b) decorative stretch seam on a sewing machine, c) finish the seams with serger and stitch them with a straight stitch.

Jacket construction

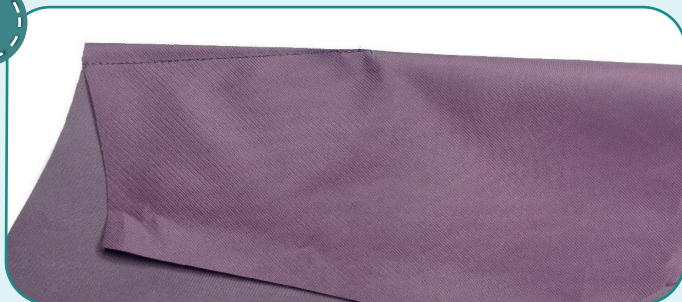


1



Transfer the marking for the darts onto the hood pieces wrong side. Pin or hand-baste the darts carefully aligning their sides.

2



Stitch the darts along the marking.

3



Glue the wrong side of all the hood shell pieces with stationery glue-pencil along the outline and you can also apply some glue in stripes inside the piece.

4



Evenly smoothing the fabric, glue the shell fabric pieces to the corresponding insulation pieces. Pin the shell fabric denser to the insulation along the outline. Repeat the process for the hood center piece, stand collar, back and zipper guard. Note that a 75 g/m² insulation is used in the zipper guard. To do this, stratify the insulation you have into two equally thick layers.

JACKET CONSTRUCTION

NOTE: If the fabric is slippery or you are a beginner, you would better hand-baste instead of pinning the fabric. Not to leave holes after hand-basting, stitch on the seam allowance close to the seam.

5



3

3-4

7

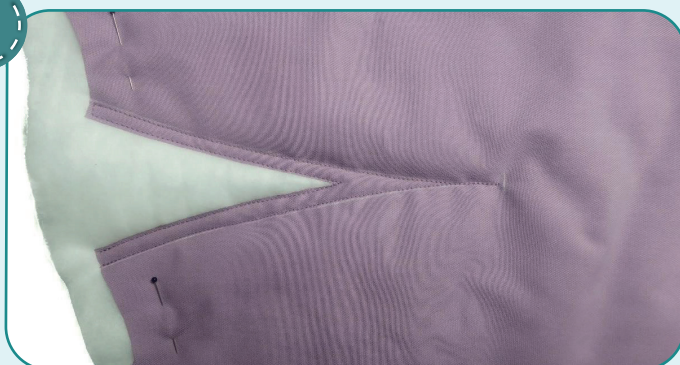
Serge the shell and the insulation pieces together. Serger trims the excess insulation, fixes the shell and the insulation together and makes the seam allowances flatter. If you do not have a serger, sew the shell fabric piece with a straight stitch 4 - 5 mm (3/16") in from the edge, then trim the excess insulation.

6



Transfer the marking for the darts onto the sleeve shell pieces right side. Pin them or glue with a glue stick.

7



3

3-4

7

2,5-3

Stitch on the sleeve darts: one seam along the marking 1 mm (1/16") closer to the edge and the other seam 1 mm (1/16") in from the edge. It will be easier to stitch the dart after having joined the insulation and the shell fabric.

8



3

3-4

7

Trim the excess insulation inside the darts. Then serge the insulation and the shell fabric together along the perimeter of each sleeve to affix them.

JACKET CONSTRUCTION

9



3



3-4



7

Pin the insulation pieces to the fronts upper and lower parts, exactly up to the marking indicated on the pattern. Serge the shell piece with the insulation piece together to affix them.

10



3



3-4



7

Insulation with a density of 75 g/m² is used in the hood placket and storm flap. To do this, stratify the insulation you have into two equally thick layers. Serge on the insulation only onto the pieces halves.

11



Transfer the marking for the topstitching the pocket flap onto the right side of the front (below the insulation edge).

12



4



2,5-3



2,5-3

Fold the front along the insulation edge, pin, and stitch in along the line.

13



Align the insulation piece lower edge with the flap stitching to shape the pocket. Place the flap atop. Pin along the center and side edges.

14



2,5-3

Affix the pocket side edges with straight stitching. Repeat the process for the other front (steps 11-14).



15



Pin or hand-baste the sleeve shoulder dart very accurately to have the darts stitching match.

16



2,5-3

Stitch the dart 1-1,5 mm (1/16") from the stitching to have them invisible on the right side. Make sure that the darts are smooth and do not form an angle.





17



2,5-3

Pin the sleeves to the back along the raglan lines with right sides together. Stitch them 10 mm (3/8") in from the edge.

18



2,5-3

Pin the front and the sleeve along the raglan edges with right sides together. Stitch them 10 mm (3/8") in from the edge. Repeat the process for the opposite front.

19



2,5-3

Pin the back and the front along the side edges with right sides together. Pin the sleeve along the side edges with right sides together. Place the sleeve attaching seam allowances in different directions to avoid bulk. Stitch the pieces 10 mm (3/8") in from the edge. Repeat the process for the other side edge and the sleeve edge.

20



2,5-3

With right sides together, fold the hood casing in half, along the long edges. Stitch the side edges 10 mm (3/8") in from the edge.

21



Trim the corners. Turn the hood casing to the right side.

22



Transfer the marking for the snap buttons from the pattern onto the front casing right side. Pin or hand-baste it aligning the lower edges to avoid displacement. Attach the snap button studs.

23



2,5-3

Place the hood casing onto the stand collar outer piece right side (the one with the insulation) focusing on the marks. Topstitch along the sides 1 mm (1/16") in from the edge, along the lower edge 7 mm (1/4") in from the edge.

24



2,5-3

Pin the stand collar outer piece to the garment neckline aligning the marks. Stitch the stand collar in place 10 mm (3/8") in from the edge. Stitch from the neckline side to avoid forming the folds.

25



2,5-3

Pin both zipper guard pieces with right sides together. Stitch them 10 mm (3/8") in from the edge along the long curved edge and along the short edge. Trim the corners and clip V shapes out of the curved edge every 3 mm (1/8"). Turn it out to the right side.

26



2,5-3

Spread the zipper guard and stitch 1 mm (1/16") in from the edge.



27



3-3,5

To topstitch the zipper guard: stitch parallel seams spaced 5 mm (3/16") apart.

28



2,5-3

Transfer the markings for Velcro tape onto the storm flap (the one with insulation) right side. Cut the Velcro scratchy hook strip into 4 pieces 10x40 mm (3/8 x 1 9/16"). Stitch them onto the storm flap right side with straight seams 1 mm (1/16") in from the edge. To prevent the Velcro tape from shifting during the stitching, it can be pinned or glued with glue stick.

29



2,5-3

With right side inside, pin the storm flap in half, along the long edges. Stitch the side edges 10 mm (3/8") in from the edge.

30



Trim the corners. Turn the storm flap to the right side.



31



2,5-3

Stitch the raw edges 7 mm (1/4") in from the edge to affix them.

32



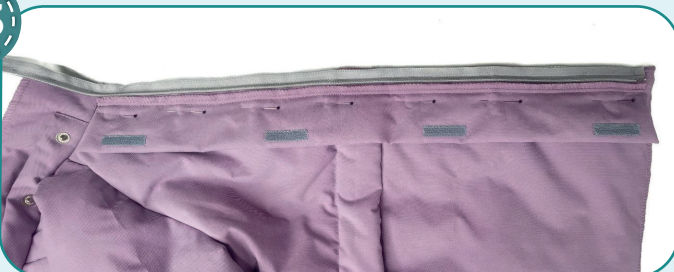
2,5-3

Open the zipper. Baste one zipper tape to the front center edge with right sides together. Place the zipper to sit accurately without pulling the fabric. Place the zipper bottom stop 11 mm (7/16") higher than the garment lower hem. Stitch the

zipper using unilateral zipper presser foot 10 mm (3/8") away from the edge. Finish the seam 15 mm (9/16") below the stand collar upper edge.

NOTE: sew a zipper and the storm flap on the left side for men and boys.

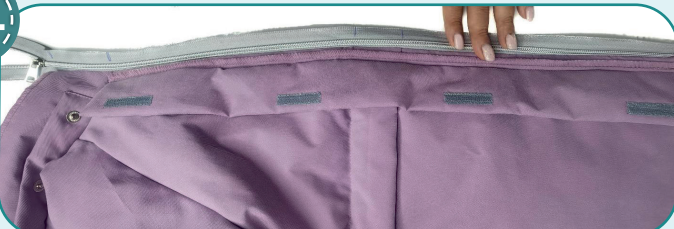
33



2,5-3

Place the storm flap raw edge to the zipper teeth. Pin and stitch them 10 mm (3/8") in from the storm flap edge.

34



Close the zipper and draw the marks for the stand collar attaching seam and both the beginning and the end of the flap on the zipper other side.

35



Pin or hand-baste the other zipper tape. Very precisely, align the marks on the zipper with the stand collar attaching seam and the flap ends. Stitch the zipper in place with the unilateral zipper presser foot 10 mm (3/8") from the edge in the same way as you stitched the first zipper tape. The stitch length is set to the maximum, so it was easy to unravel the

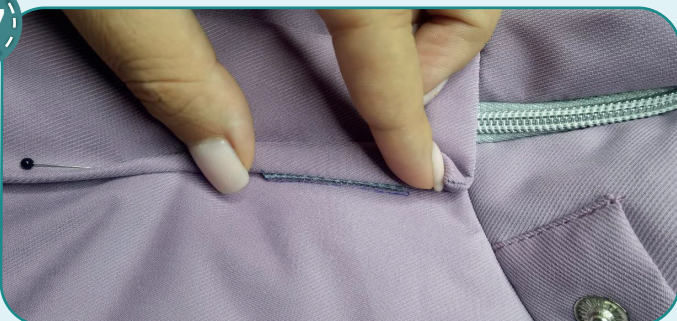
stitch. If the slider prevents you from finishing the seam, then place the machine needle in the work, raise the zipper presser foot, move the zipper slider, lower the zipper presser foot, and sew on. Close the zipper, make sure that the collar attaching seams and flaps match and the zipper is flat, not in waves.

36



Pin the storm flap as it will be in the finished garment.

37



Carefully unbend the storm flap edge to draw the marks for the Velcro tape, focusing on the Velcro tape on the storm flap.

38



Rip off the zipper to avoid difficulty when stitching the Velcro tape. Cut the Velcro fuzzy loop strip into 4 pieces 10x40 mm (3/8 x 1 9/16"). Stitch them onto the left front right side with straight seams 1 mm (1/16") in from the edge. Stitch the Velcro fuzzy loop part onto the left front.

NOTE: stitch the Velcro fuzzy loop part onto the right front for men and boys.

39



Pin the zipper tape, that has been ripped off to the zipper guard with the right side facing up. Tuck the zipper top extension to the wrong side (or shorten the zipper to the desired length) and place it at the same level with the mark. Overlap the zipper right side with the zipper guard part (above the mark) and pin. Affix the chin guard with a straight stitching 7 mm (1/4") in from the edge.



2,5-3

40



ends. Place the upper fold 11 mm (7/16") below the stand collar edge. Stitch the zipper and zipper guard 10 mm (3/8") in from the edge.



2,5-3

NOTE: stitch the zipper guard and the zipper to the right front on the men jacket.

41



2,5-3

Close the zipper. Make sure that the flap and the storm flap seams fit, Velcro tapes fasten. Tuck the other zipper tape top extension to the wrong side (or shorten the zipper to the desired length).

42



Trim the front center edges and the zipper guard seam allowances to 3 mm (1/8"). Do not trim the zipper tape.

43



Cut the elastic 20 mm (13/16") wide and the length indicated on the cuff pattern. Place the cuff in half along the short edges with right side inside. Place the elastic atop at the same level with the cuff short edge center aligning the side edges.

44



Fold the cuff edge in half along the long edges wrapping the elastic. Leave the other elastic edge free.

45



Place the elastic free edge atop the cuff aligning the side edges and elastic upper edge with the cuff fold. Pin them. Stitch the entire "sandwich" 10 mm (3/8") in from the edge.



46



Turn the cuff out to the right side.

47



Aligning the cuff long edges, stitch 9 mm (3/8") in from the edge. This is best done with a unilateral zipper presser foot. While stitching, stretch the elastic and make a few stitches, then smooth the next section. Care the elastic is not caught into the seam. Repeat the process for the other cuff (steps 43-47).

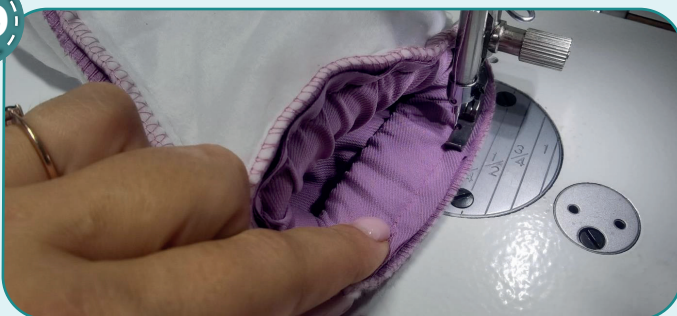


48

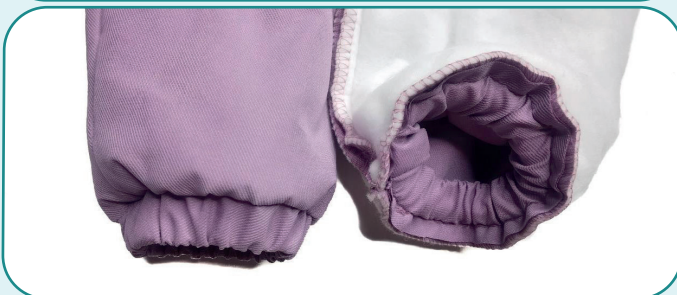


Pin the cuff into the sleeve with right sides together and aligning the seams and centers.

49



Stitch the cuff 10 mm (3/8") in from the edge. Stretch the elastic while stitching. Repeat the process for the other cuff.



50



Pin the front lower hem facing to the front lining with right sides together. Stitch them 10 mm (3/8") in from the edge. Press the seam allowances towards the lining.

51



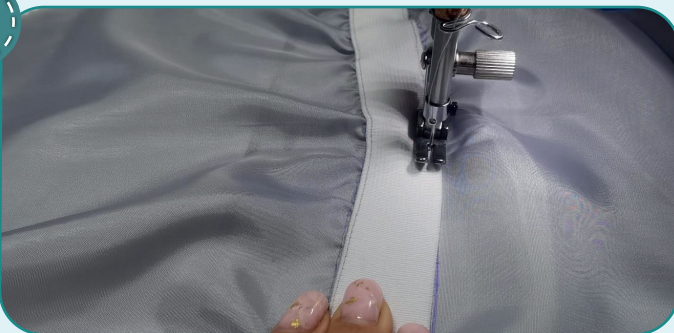
Working from the lining side, topstitch the lower hem attaching seam 1 mm (1/16") in from the edge. Repeat the process for the other front lining and the back (steps 50-51).

52



Transfer the marking for the elastic onto the back lining. Cut the elastic 30 mm (1 3/16") wide and the length indicated on the pattern. Pin it from the wrong side aligning the side edges.

53

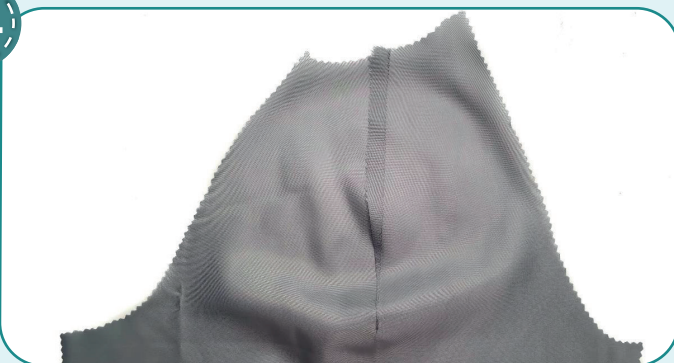


2,5-3

Stitch in the elastic with two straight seams 1 mm (1/16") in from its edges. Evenly stretch the elastic when stitching.



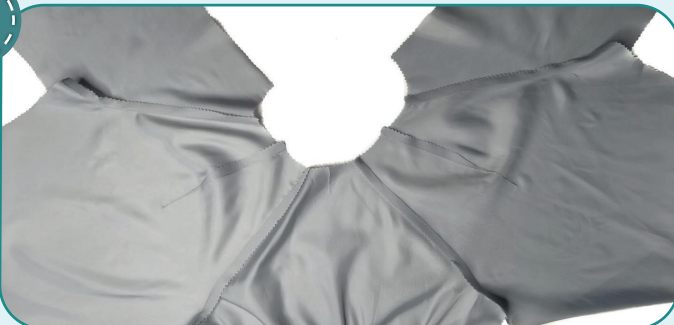
54



2,5-3

Stitch the sleeve shoulder darts. Press the seam allowances towards the front.

55



2,5-3

Stitch the sleeves lining with the back and the front linings along the raglan edges 10 mm (3/8") in from the edges. Press the seam allowances towards the back and front linings.

56



2,5-3

Pin the back and the front linings along the side edges with right sides together. Pin the sleeve along the side edges with right sides together. Stitch the pieces 10 mm (3/8") in from the edge. Repeat the process for the other side seam and the sleeve side seam. Leave a hole about

12 cm (4 3/4") in one of the sleeves to turn the garment out to the right side. At the same time stitch the swing tacks to the lining (the strips of fabric 60 mm (2 3/8") long and 15 mm (9/16") wide to the underarm seams. Press the seam allowances open.

57



Cut a strip of the lining fabric 30 mm (1 3/16") wide and 100 mm (4") long to make a loop.

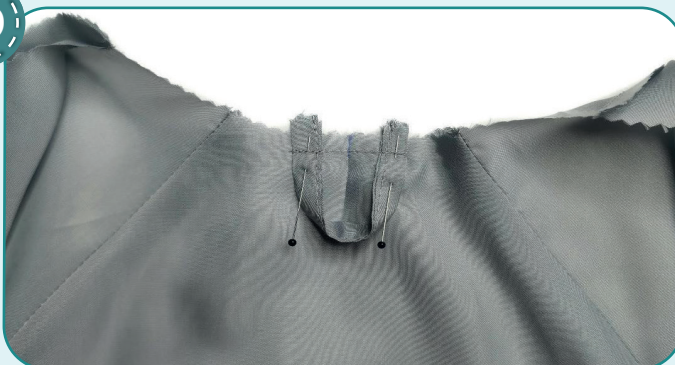
58



2,5-3

Fold the loop in half and double tuck it, wrong side inside, pin and topstitch 1 mm (1/16") in from the edge.

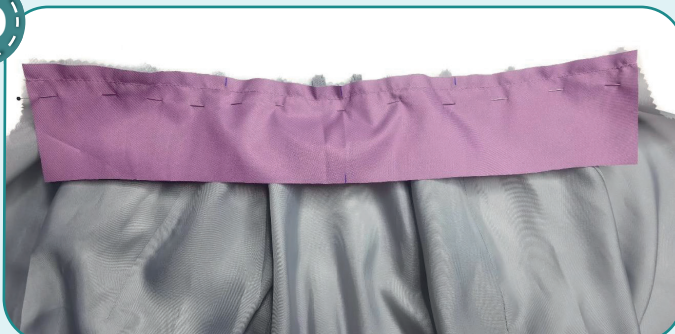
59



2,5-3

Pin the prepared loop strip to the lining neckline back center on the right side. Stitch the loop strip 7 mm (1/4") in from the edge.

60



2,5-3

Pin the stand collar under piece to the lining neckline aligning the marks. Stitch the stand collar in place 10 mm (3/8") in from the edge. Stitch from the lining neckline side to avoid forming the folds.

61



2,5-3

Pin the jacket and the lining along the stand collar upper edges with right sides together. Stitch them 10 mm (3/8") in from the edge.

62



2,5-3

Stitch up the seam allowances onto the stand collar under piece 1 mm (1/16") in from the seam.

63



2,5-3

Pin the jacket and the lining along the lower edges with right sides together. Stitch them 10 mm (3/8") in from the edge.

64



3-3,5

Stitch up the seam allowances onto the lower hem facings 1 mm (1/16") in from the seam.

65



2,5-3



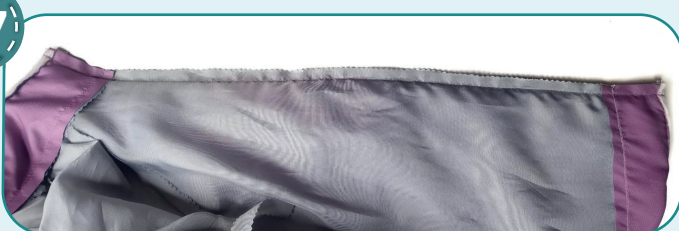
Place the sleeve lining into the sleeve in the way it will be in the finished garment. Align the sleeve seam with the sleeve lining seam. Turn the sleeve and the sleeve lining out together (but do not shift the sleeve and the sleeve lining lower hems) and place them between the jacket and its lining (inside the garment). Hand-baste the sleeve to the sleeve lining along the lower hem line with right sides together, inserting the sleeve into the lining and aligning the seams. Stitch the sleeve to the lining 10 mm (3/8") in from the edge. Stitch from the sleeve side for it match the cuff attaching seam. Repeat the process for the other sleeve.

66



Hand-baste the lower hem facings along the side seams for them not to get towards the right side when wearing.

67



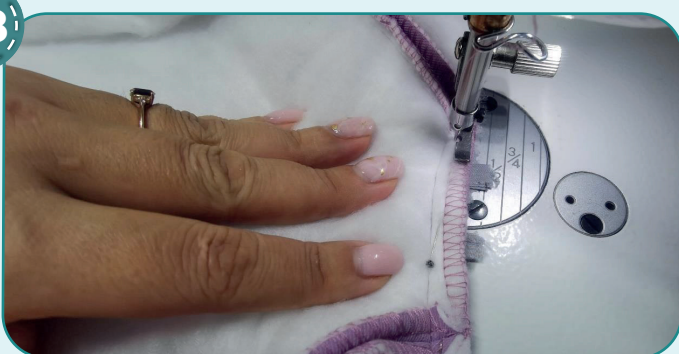
Pin the jacket and the lining along the center edges with right sides together. Stitch them 10 mm (3/8") in from the edge. Start stitching from the garment top, so the seam coincides with the zipper attaching seam. Trim the corners.



2,5-3

Pin the jacket and the lining along the center edges with right sides together. Stitch them 10 mm (3/8") in from the edge. Start stitching from the garment top, so the seam coincides with the zipper attaching seam. Trim the corners.

68



2,5-3

Pin the jacket and lining neckline seam allowances. Stitch them 10 mm (3/8") in from the edge. Start and finish stitching as close to the zipper as possible. Slash along the neckline every 20 mm (13/16") leaving 1 mm (1/16") before the stitching.



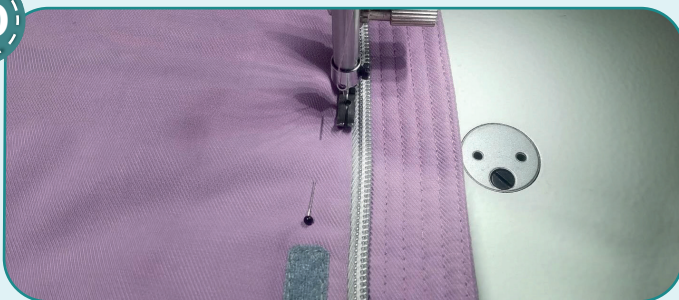
69



2,5-3

Stitch swing tacks to the garment underarm seam allowances. Turn the garment out to the right side.

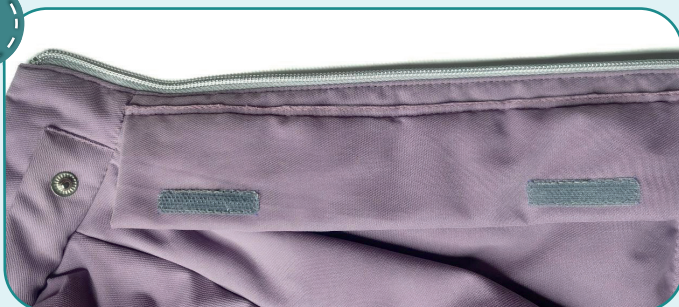
70



Smooth the corners above and below the zipper. Pin along the zipper placing the lining accurately. Topstitch the zipper 1 mm (1/16") away from the attaching seam.

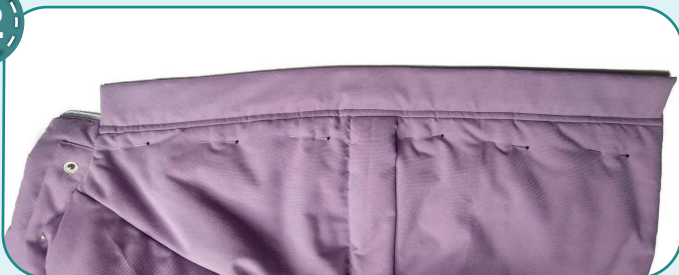


71



Trim the storm flap seam allowance to 3-4 mm (1/8").

72



Place the storm flap atop the zipper. Smooth and pin the lining. Topstitch the storm flap 7 mm (1/4") away from the attaching seam.

73



With right sides together, pin the hood and the hood center pieces, aligning the marks. Stitch the pieces 10 mm (3/8") in from the edge. Repeat the process for the opposite hood side piece.

74



2,5-3

Transfer the marking for the Velcro onto the right side of the hood and the hood facing. Cut the Velcro (scratchy hook and fuzzy loop strips) into 4 pieces 20x45 mm (1 3/16 x 1 3/4"). Stitch Velcro scratchy hook piece onto the hood facing right side and Velcro fuzzy loop piece onto the hood left part.

NOTE: It is vice versa for men's jacket: stitch the scratchy hook piece onto the hood facing left side, and the fuzzy loop piece onto the hood right part.

75



2,5-3

Transfer the marking for the darts onto the hood linings wrong side. Pin or hand-baste the darts carefully aligning their sides. Stitch the darts along the marking. Press the darts towards the back.

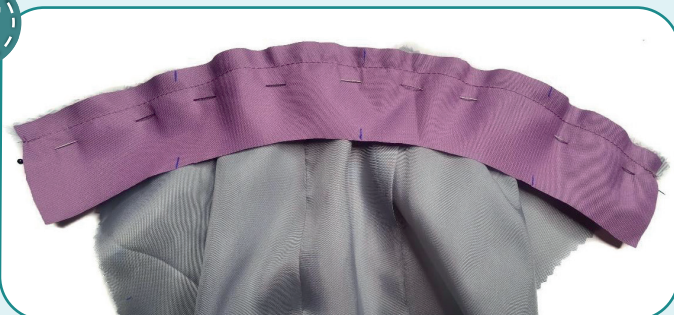
76



2,5-3

With right sides together, pin the hood lining side and center pieces, aligning the marks. Stitch the pieces 10 mm (3/8") in from the edge. Press the seam allowances towards the hood center piece. Repeat the process for the opposite hood lining piece. Leave a hole in one of the seams around 70 mm (2 3/4") long for turning out.

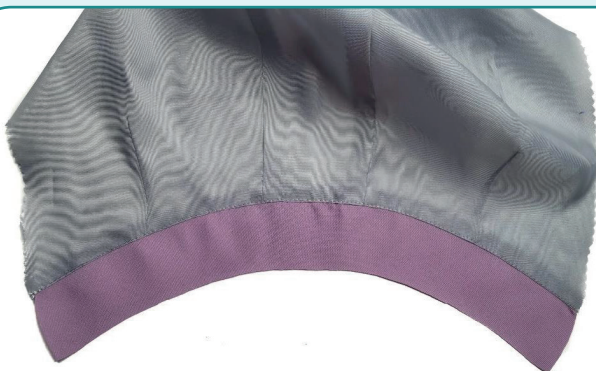
77



2,5-3

Pin the hood lining with hood facing lower hem with right sides together. Stitch them 10 mm (3/8") in from the edge. Slash the lining seam allowances every 15-20 mm (9/16 - 13/16") and press them towards the lining.

78



3-3,5

Stitch up the seam allowances onto the lining 1 mm (1/16") in from the seam.

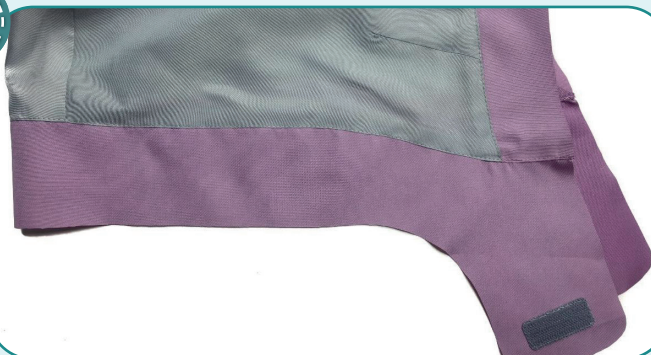
79



2,5-3

Pin the hood lining with the hood facing, right sides together. Stitch them 10 mm (3/8") in from the edge. Slash the lining seam allowances every 15-20 mm (9/16 - 13/16") and press them towards the lining.

80



3-3,5

Stitch up the seam allowances onto the lining 1 mm (1/16") in from the seam.

81

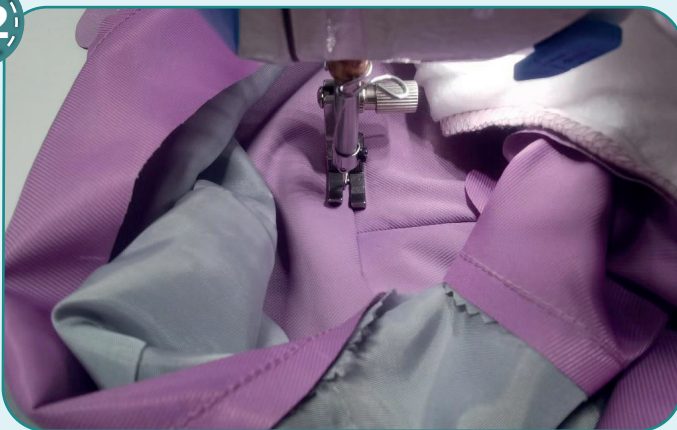


2,5-3

Pin the hood and the hood lining with right sides together, aligning the marks. Stitch the pieces along the outer edge 10 mm (3/8") in from the edge. Begin and finish stitching around 15 mm (9/16") below the casing end marks.



82



3-3,5

Stitch up the seam allowances onto the hood facing 1 mm (1/16") in from the seam.



83



Trim the hood seam allowances along the seam to 3 mm (1/8"). Turn the hood out to the right side.

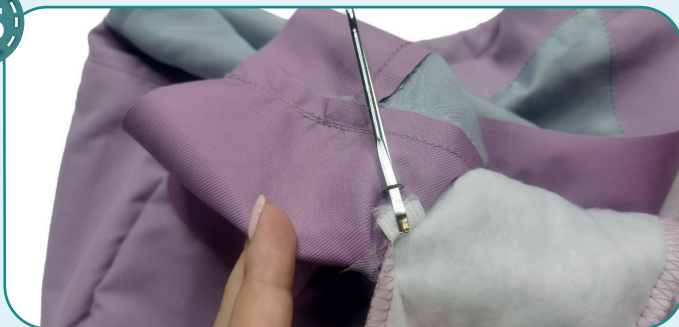
84



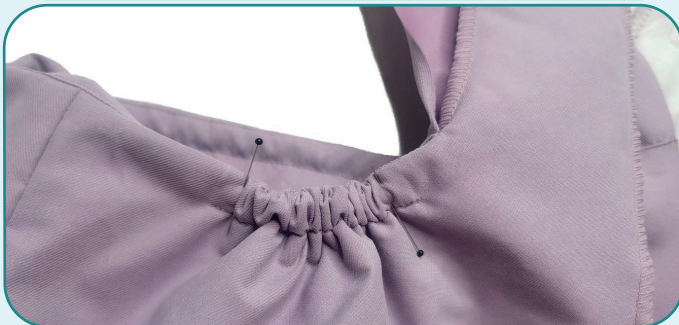
3-3,5

Pin the hood along the outer edge forming a roll towards the facing. Stitch between the marks 15 mm (9/16") in from the edge. These will be the casings for elastic.

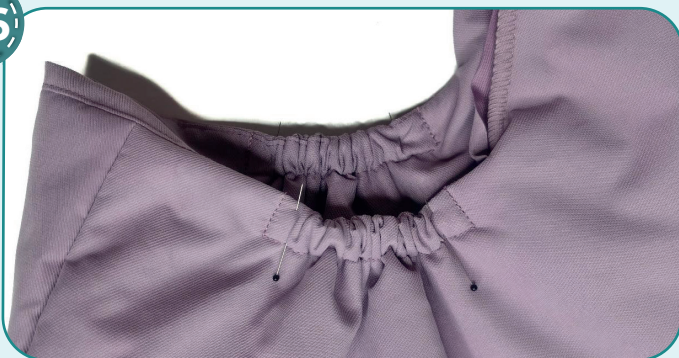
85



Cut two pieces of elastic 15 mm (9/16") wide and the length indicated on the pattern. Thread them into the casings with bodkin or a safety pin. The ends of the elastic should extend 10 mm (3/8") beyond the edges. Pin the ends of the elastic.

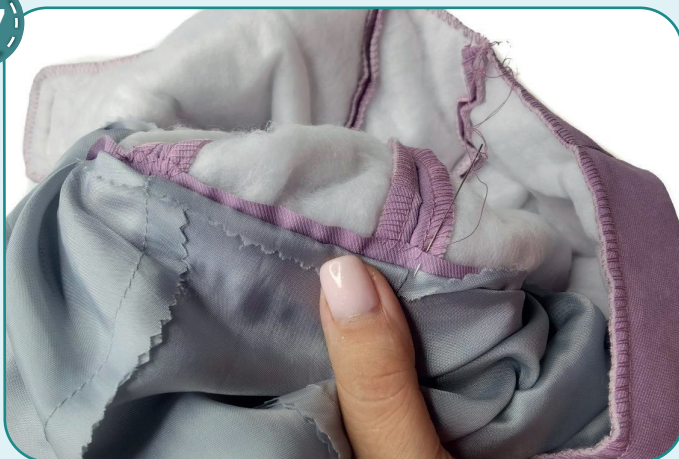


86



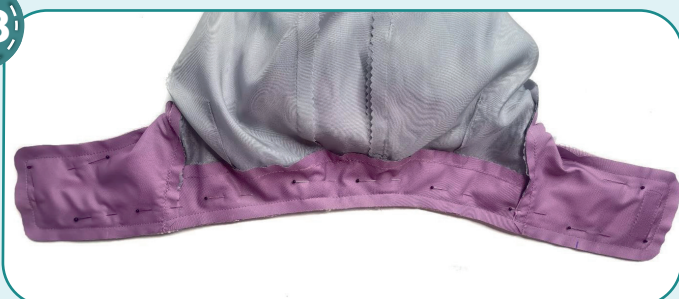
To affix the ends of the elastic, stitch across the casing edges.

87



Hand-baste the hood facing to the hood center seams for them not to get towards the right side when wearing.

88



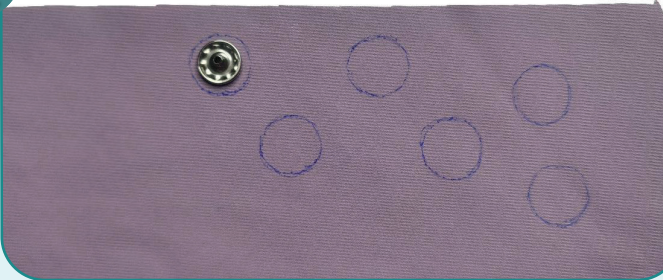
Turn the hood out to the wrong side. Stitch the hood lining and the hood along the raw edges 10 mm (3/8") in from the edge.

89



Trim the seam allowances to 4 mm (1/8"). Slash the seam allowances along the curved edges, 1 mm (1/16") before the stitching. Turn the hood out to the right side through the hole left. Smooth the edges.

90



Draw the shell fabric button patterns slightly larger than the diameter of the snap buttons. Draw 15 mm (9/16") diameter button patterns for 12,5 mm (1/2") diameter snap buttons.

91



3-3,5

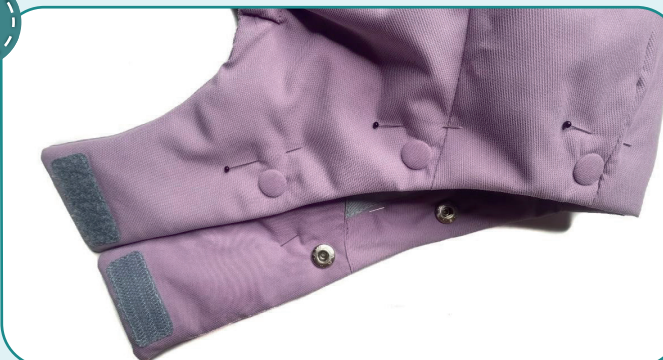
Leaving 50 mm (2") thread tails, stitch a gather thread around the edge. Cut the patterns 1,5 mm (1/16") away from the edge but do not cut the thread tails.

92



Place the snap button top on the fabric piece and pull up the gathers, pulling the upper thread tails at the same time. Tie the thread tails together with several knots. Then tie the lower thread tails together and make several knots. Trim the thread tails. Tighten the fabric slightly by hand with a needle and thread.

93



Transfer the marks for the snap buttons onto the hood. Punch 1- 2 mm (1/16") holes with a Hole Punch. Attach the snap buttons with a press.

94



Hand-baste the hole in the hood lining and the sleeve with a blind stitch.

95



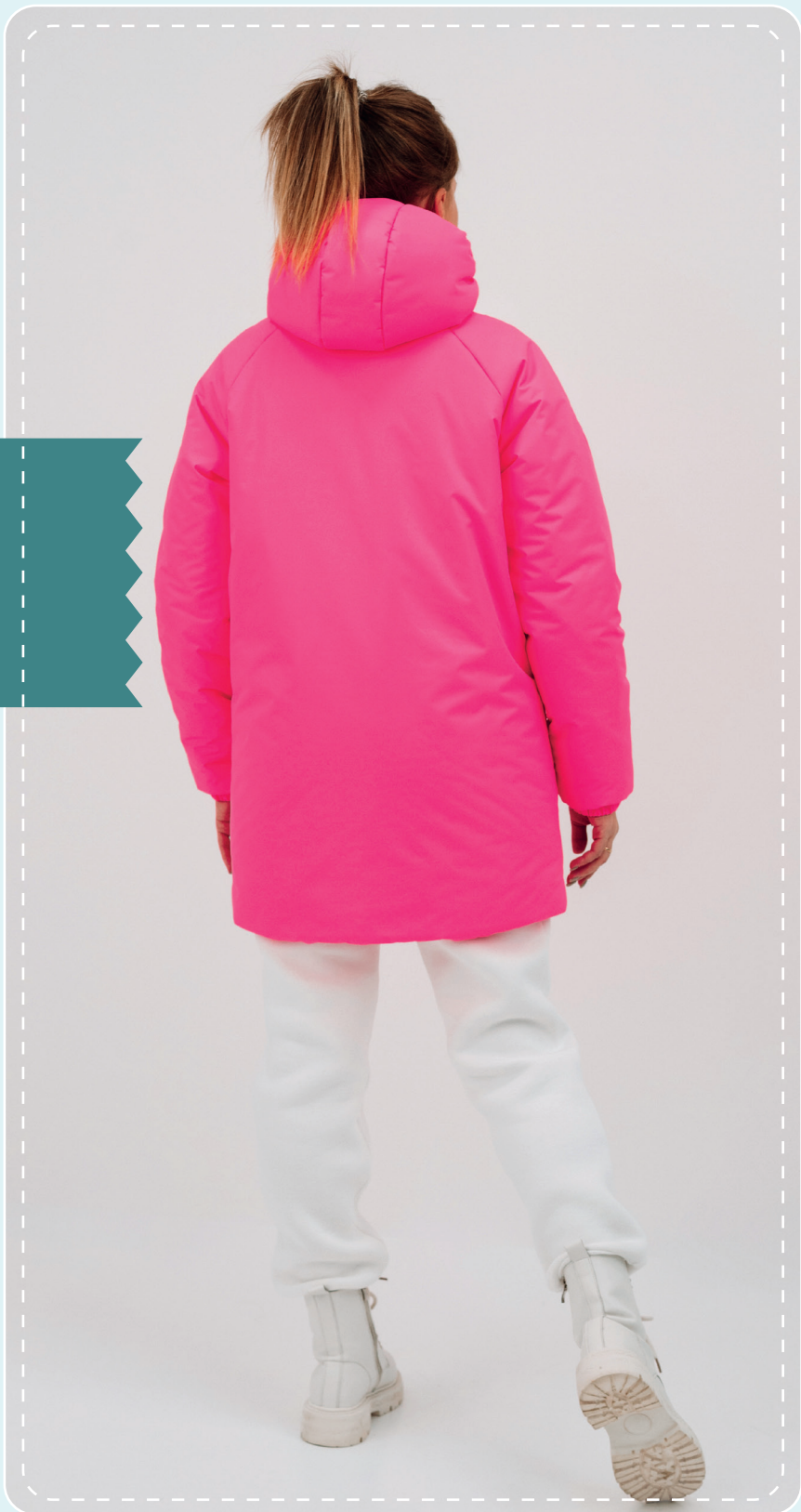
Remove the basting stitches, trim the thread tails, and press the garment once again. The jacket is ready!

ELINA PATYKOVA

ПРО ШИТЬЕ

Jacket Pocket

Thank you for joining my
team and me!
Share your works in my
groups. Hope you will stay
with us for our next project!



ELINA_PATKOVA



ELINA-PATKOVA.RU



VK.COM/ELINA_PATKOVA