

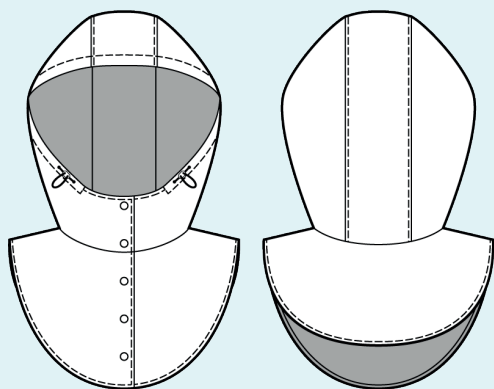
ELINA PATYKOVA

ПРО ШИТЬЕ

Instructions
for sewing

Hooded Neck Warmer

#патыкова_капюшон



Skill level



ELINA_PATKOVA

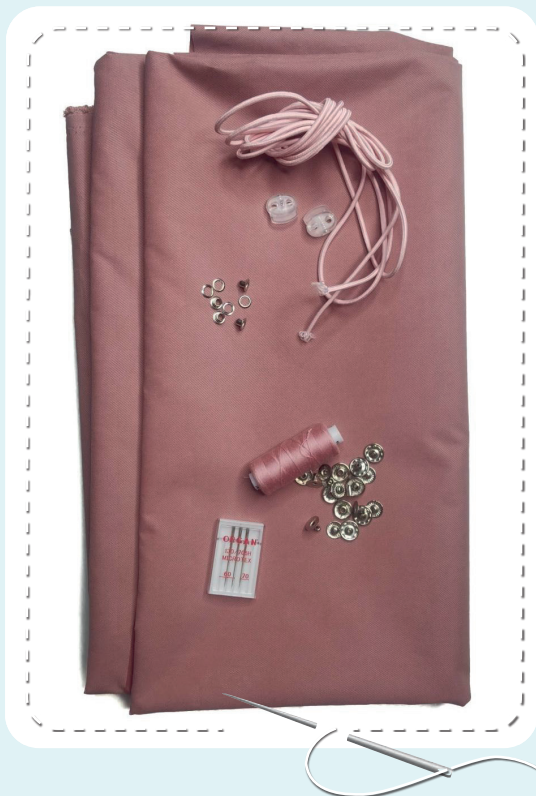


ELINA-PATKOVA.RU



VK.COM/ELINA_PATKOVA

Materials and notions



- windbreaker shell fabric
- Alfa snap buttons 12,5 mm (1/2") - 5 pcs.
- elastic cord 3-4 mm (1/8")
- eyelets 5 mm (3/16") - 4 pcs.
- 2 holes stopper - 2 pcs.
- matching thread
- Microtex 70-80 needles

If you are not sure about the fit of the garment, it is recommended to sew a muslin with similar properties (elasticity, thickness, drape) first. This will allow you

to adjust the length, width and fit of the garment and save time.



To find out how long a piece of fabric to take, you should place the pattern pieces onto the table, the floor or bedspread, pre-measured width equal to half the width of the selected fabric. Place the pieces, caring the direction of the grain line, their number, i.e., the way you will place them when cutting. Measure the length of the pattern pieces fit, add to this length 5% for the fabric shrinkage - this will be the required amount of fabric for the project.

Let's start the cutting. Print and glue all the paper patterns. When printing, do not forget to check the size of the test square.

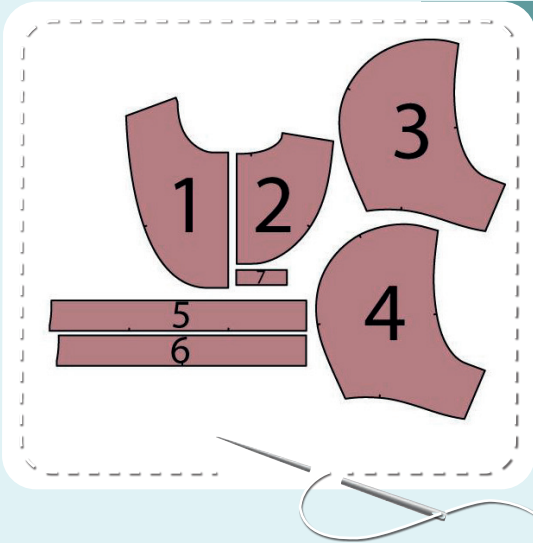
Put the paper pattern pieces onto the fabric. It is important to check that the grain is straight. Pin the paper pattern pieces to the fabric gently and cut the fabric along them. Note: seam allowances are already included. Transfer all the marks from the pattern onto the wrong side of your fabric.



Now you have

HOOD PIECES:

1. front - cut 4
2. back - cut 2 on the fold
3. hood lining - cut 2
4. hood - cut 2
5. hood center piece - cut 1 on the fold
6. hood center lining - cut 1 on the fold
7. loop



Construction

Symbols



straight stitch



the stitch length in (mm)



flat lock stitch



zigzag stitch



the stitch width in (mm)



3-Step Zigzag Seam Finishing



unilateral zipper presser foot



universal presser foot



invisible zipper presser foot



pinning

You should lockstitch the seam and trim the thread tails or tie the seam thread tails and hide them into the seam after sewing a serger stitch or cover seaming chain stitch.



double welting (piping) presser foot



3-thread serger stitch



4-thread serger stitch

NOTE

A

4-thread serger stitch

If you do not have a serger, you can use stretch stitches available on your sewing machine, or at least, a zigzag stitch.

B

3-thread serger stitch

If you do not have a serger, you can replace it with an overedge stitch, or a zigzag stitch.

C

flat lock stitch

If you do not have a coverstitch machine, the flat seam can be performed with a) a twin needle on a sewing machine, b) decorative stretch seam on a sewing machine, c) finish the seams with serger and stitch them with a straight stitch.



Hood construction



1



2,5-3

With right sides together, pin the hood and the hood center piece, aligning the marks. Stitch the pieces 10 mm (3/8") in from the edge. Repeat the process for the opposite hood side piece.

NOTE: If the fabric is slippery or you lack experience, you would better hand-baste instead of pinning the fabric. To avoid pinholes after hand-basting, stitch on the seam allowance close to the seam.

2



3-3,5

Topstitch the seams along the center piece with parallel stitching 1 mm (1/16") and 7 mm (1/4") away from the seam.

3



2,5-3

Pin the front and the back along the shoulder edges with right sides together. Stitch them 10 mm (3/8") in from the edge.

4



2,5-3

With right sides together, pin the hood to the neckline, aligning the marks. Stitch the hood 10 mm (3/8") in from the edge.

HOOD CONSTRUCTION

5



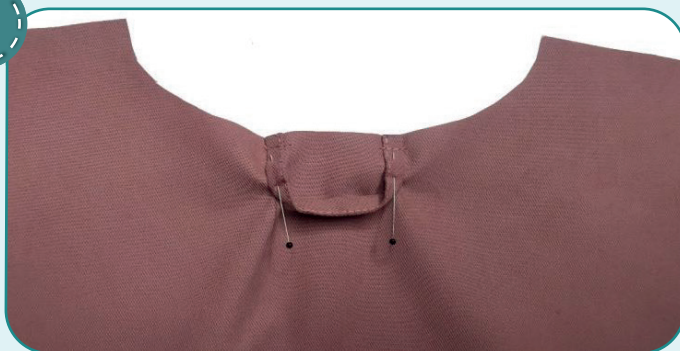
Slash the seam allowances along the neckline every 15 - 20 mm (5/8-3/4"), leaving 1 mm (1/16") before the seam.

6



Fold the loop in half and double tuck it, wrong side inside, pin and topstitch 1 mm (1/16") in from the edge.

7



Pin the loop to the right side of the back neckline center, focusing on the marks. Stitch the loop 7 mm (1/4") in from the edge.

8



Repeat the process for the hood lining (steps 1-5).

9



Place the hood lining into the hood with right sides together. Pin and stitch them along the outer edge 7 mm (1/4") in from the edge.

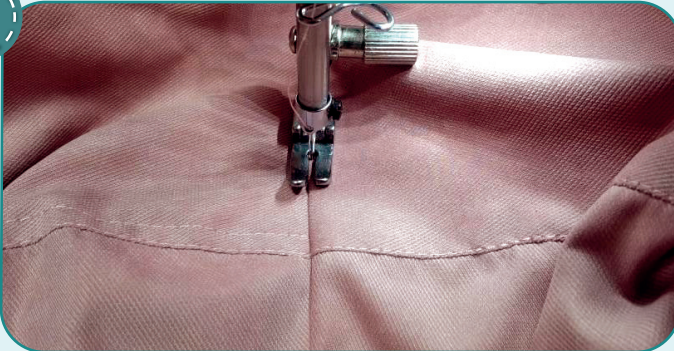


10



Slash the seam allowances along the curves every 10 - 20 mm, (3/9-13/16") and leaving 1 mm (1/16") before the stitching.

11



Working from the lining right side, topstitch the hood attaching seam 1 mm (1/16") away from the seam. Begin and finish stitching at the casing marks for the elastic cord.

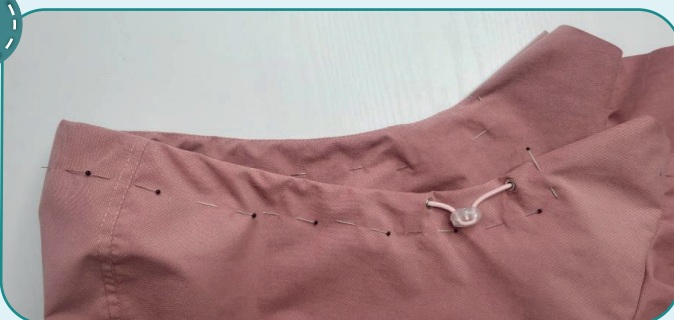


12



Punch 4 mm (1/8") holes for the eyelets with a Hole Punch or scissors. Attach the eyelets with a press. We advise you to use plastic rings, or to add several layers of fabric on the wrong side, which can then be neatly trimmed away close to the eyelet.

13



Insert the elastic cord into the hood and attach 2 holes stoppers. Pin the elastic cord ends so that they will not be caught when stitching the hood outer edge seam. Pin the hood and the hood lining edges.

14



2,5-3

Stitch on the hood outer edge 20 mm (13/16") away from the edge, as indicated on the hood pattern. Make sure that the elastic cord is inside the casing and that the ends are caught in the stitching and secured.

15



2,5-3

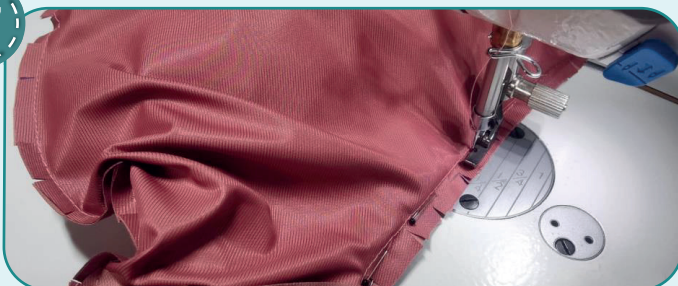
With right sides together, pin the hood and the hood lining along the free edges aligning the seams and the marks. Stitch them 7 mm (1/4") in from the edge. Leave a hole about 70 mm (3 1/8") on the left front center edge for turning the garment out.

16



Slash the seam allowances every 10 - 20 mm, (3/8-13/16") 1 mm (1/16") before the stitching. Trim the corners.

17



2,5-3

Tuck the hood inside and align the necks of the upper and under layers. Pin them as close to the center edges as possible. Stitch the neckline edges with a unilateral zipper presser foot 8-9 mm (5/16-3/8") away from the edge. Turn the hood out through the hole to the right side.



HOOD CONSTRUCTION

18



2,5-3

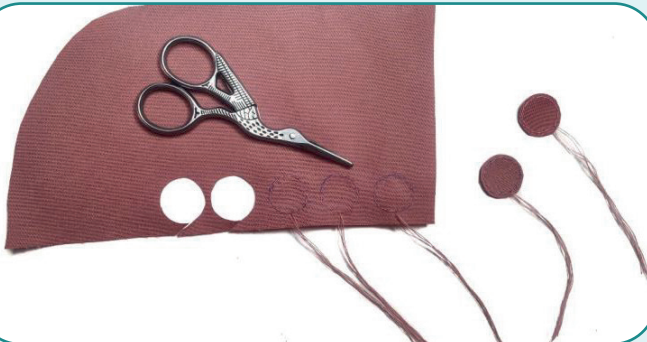
Smooth the hood corners and edges. Topstitch two seams along the hood perimeter between the casing ends 1 mm and 7 mm (1/16 and 1/4") in from the edge, stitching up the hole at the same time.

19



Cut out the shell fabric button patterns slightly larger than the diameter of the snap buttons. Draw 15 mm (9/16") diameter button patterns for 12,5 mm (1/2") diameter snap buttons.

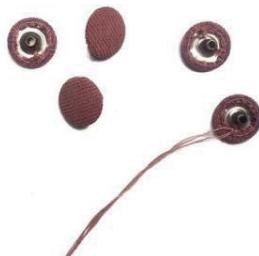
20



3-3,5

Leaving 50 mm (2") thread tails, stitch a gather thread around the edge. Cut the patterns 1,5 mm (1/16") from the edge but do not cut the thread tails.

21



Place the snap button top on the fabric piece and pull up the gathers, pulling the upper thread tails at the same time. Tie the thread tails together with several knots. Then tie the lower thread tails together and make several knots. Trim the thread tails. Tighten the fabric slightly by hand with a needle and thread.

22



Transfer the marks for the snap buttons onto the hood. Punch 1-2 mm (1/16") holes for the snap buttons with a Hole Punch or scissors. Attach the snap buttons with a press.

23



Remove the basting stitches, trim and hide the thread tails and press once again. The hooded neck warmer is ready!

ELINA PATYKOVA

ПРО ШИТЬЕ

Hooded Neck Warmer

Thank you for joining my team and me!
Share your works in my groups. Hope you will stay with us for our next project!



ELINA_PATKOVA



ELINA-PATKOVA.RU



VK.COM/ELINA_PATKOVA