

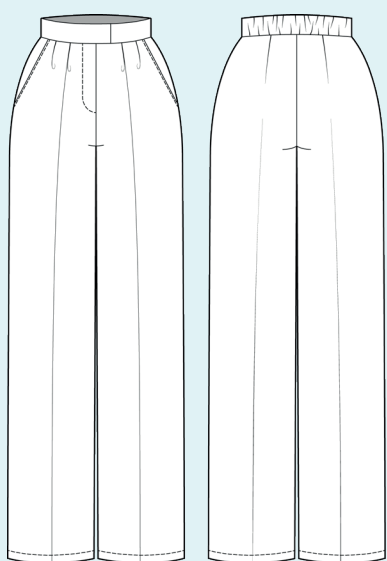
ELINA PATYKOVA

ПРО ШИТЬЕ

Instructions
for sewing

Palazzo pants

#патыкова_палаццо



Skill level



Materials and notions



- suiting fabric (density 275 gr.)
- fusible interfacing
- stabilizing tape or kantenband
- pant hook and eye (sewn on) - 2 pcs.
- button Ø 10 - 12 mm (3/8 - 1/2") - 1 pc.
- elastic 40 mm (1 9/16") wide
- closed-end zipper 18 cm (7") - 1 pc.
- matching thread
- Universal 80-90 needles

If you are not sure about the fit of the garment, it is recommended to sew a muslin with similar properties (elasticity, thickness, drape) first. This will allow you

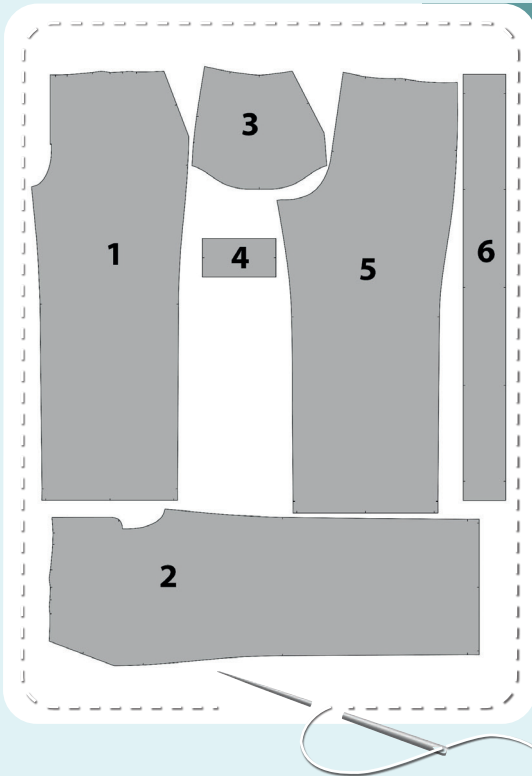
to adjust the length, width and fit of the garment and save time.

To find out how long a piece of fabric to take, you should place the pattern pieces onto the table, the floor or bedspread, pre-measured width equal to half the width of the selected fabric. Place the pieces, caring the direction of the grain line, their number, i.e., the way you will place them when cutting. Measure the length of the pattern pieces fit, add to this length 5% for the fabric shrinkage - this will be the required amount of fabric for the project. The fabric must be prepared for sewing: washed in warm water, dried, and ironed.

How to cut: Print and glue the paper patterns. When printing, do not forget to check the size of the test square.

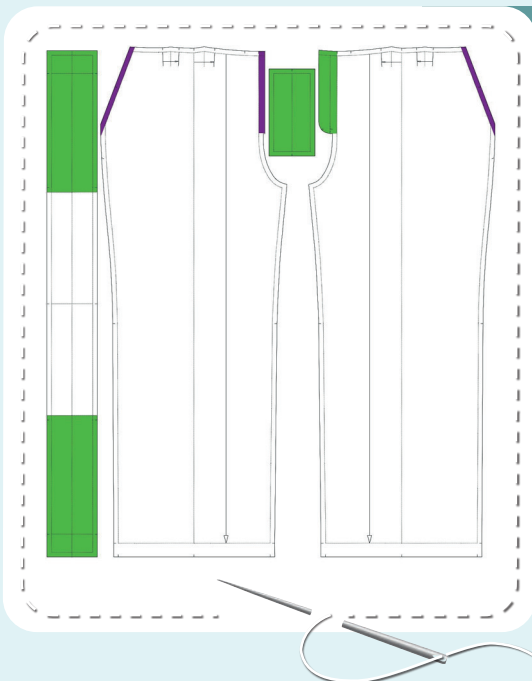
Put the paper pattern pieces onto the fabric. It is important to check that the grain is straight. Get the pieces pressed to the fabric with weights and gently cut the fabric along outline. Note: seam allowances are already included. Transfer all the marks from the pattern onto the wrong side of your fabric.

Now you have



PANTS PIECES:

1. left front - cut 1
2. right front - cut 1
3. pocket lining - cut 2
4. under fly - cut 1
5. back - cut 2
6. waistband - cut 1



PIECES TO INTERFACE

- Purple - kantenband
 - pocket opening on the fronts
 - the zipper area on the left front
- Green - fusible interfacing
 - waistband front parts
 - under fly
 - the fly front area on the right front

Construction

Symbols



straight stitch



the stitch length in (mm)



flat lock stitch



zigzag stitch



the stitch width in (mm)



3-Step Zigzag Seam Finishing



unilateral zipper presser foot



universal presser foot



invisible zipper presser foot



pinning

You should lockstitch the seam and trim the thread tails or tie the seam thread tails and hide them into the seam after sewing a serger stitch or cover seaming chain stitch.



double welting (piping) presser foot



3-thread serger stitch



4-thread serger stitch

NOTE

A

4-thread serger stitch

If you do not have a serger, you can use stretch stitches available on your sewing machine, or at least, a zigzag stitch.

B

3-thread serger stitch

If you do not have a serger, you can replace it with an overedge stitch, or a zigzag stitch.

C

flat lock stitch

If you do not have a coverstitch machine, the flat seam can be performed with a) a twin needle on a sewing machine, b) decorative stretch seam on a sewing machine, c) finish the seams with serger and stitch them with a straight stitch.

Pants construction



1



Fuse kantenband pieces to the pocket opening on the fronts and the zipper area on the left front. Duplicate the under fly and the fly front area on the right front.



2



Fold the back and front pieces along the marking and press the center creases.



3



2,5-3

With right sides together, pin the pocket lining to the garment front along the pocket opening. Stitch them 10 mm (3/8") in from the edge.

NOTE: if you lack experience, it is better to hand baste before all the steps.

PANTS CONSTRUCTION

4



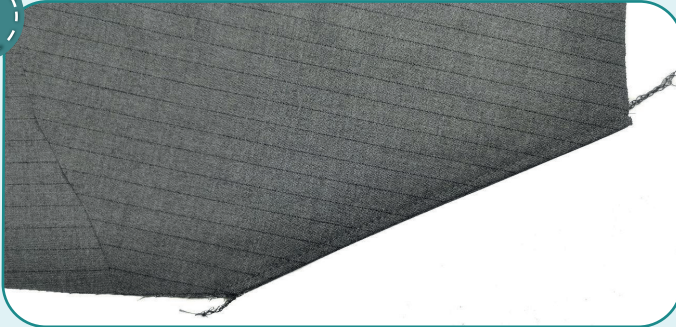
2,5-3,5



7

Finish the seam allowances with serger.

5



2,5-3

Turn the pocket out and press it forming a roll towards the pocket lining. Topstitch along the pocket opening 7 mm (1/4") away from the edge. Press the pocket opening.

6



2,5-3

Press the pocket bag in half aligning the marks and lower edges. Pin the pocket bag lower edges. Stitch them 10 mm (3/8") in from the edge. Press the pocket.

7



2,5-3,5



7

Use serger to finish the seam allowances together. Press the pocket.

8

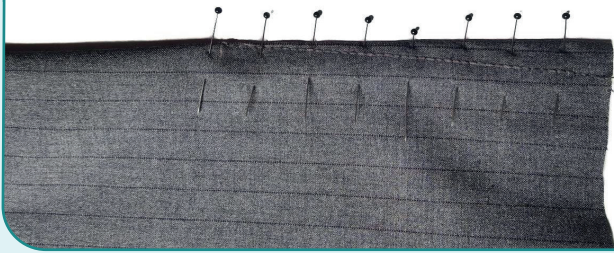


2,5-3

Affix the pocket bag above and below the pocket opening, stitching 7 mm (1/4") away from the edge. At the same time make and affix the pleats. Make the pleats facing the center on the right side. Repeat the process for the pocket and the opposite pleats on the other front (steps 3-8).

PANTS CONSTRUCTION

9



2,5-3

Transfer the marking for the darts on the backs wrong side. Pin or baste the darts carefully aligning its sides. Stitch the darts along the marking line. Press the darts to the center.

10



2,5-3,5



7

Finish the side and inside edges on the fronts and backs with serger. Press them.

11



2,5-3

Place the pant front and back panels along the side and inside edges, right side inside. Stitch them 10 mm (3/8") in from the edge. Press the seam allowances open. Repeat the process for the other pant leg.

12



2,5-3,5



7

Finish the center edges with serger. Press the edges.



13



2,5-3

Insert the left pant leg into the right one with right sides together. Pin the crotch seam. Working from the left pant leg, stitch the pieces with one seam as follows. Stitch along the right pant leg edge 10 mm (3/8") away from the edge and fold the left pant leg edge at 8 mm (5/16") to have the stitching 1 mm (1/16") away from the fold. Start stitching at the zipper bottom stop mark. Press the seams out.

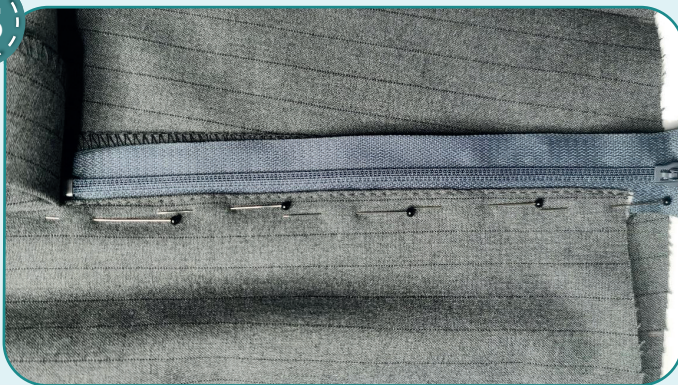


14



Fold the raw center edge of the left front at 10 mm (3/8") to the wrong side and press. Press the fly front on the right pant leg along the fold line.

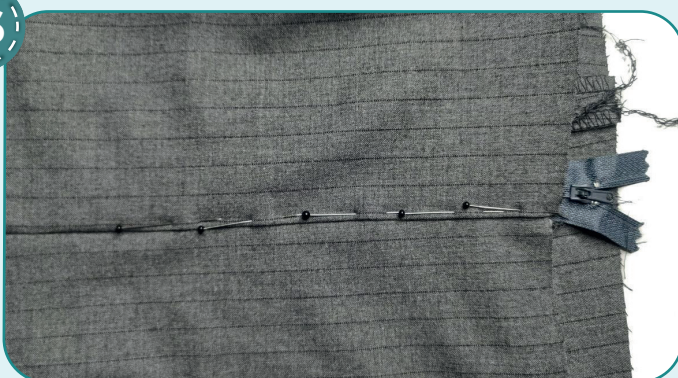
15



2,5-3

Place the zipper to the left front center edge, right side to the wrong side. Place the left front center edge fold 2-3 mm (1/16-1/8") away from the zipper teeth. Stitch the zipper 1 mm (1/16") away from the center edge fold.

16



Place the fronts to see them zipped up. Hand-baste or pin the fly front on the right side.

17



2,5-3

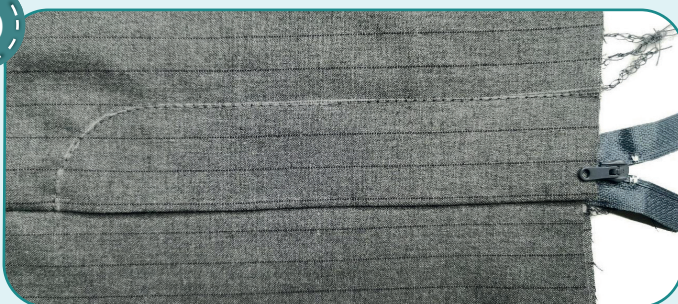
Turn the garment out to the wrong side. Pin the zipper left tape to the fly front, but avoid catching the garment right side. Stitch the zipper to the fly front 5 mm (3/16") away from the zipper tape edge.

18



Draw the marking line for topstitching the fly front on the right side of the right front.

19



2,5-3

Topstitch the fly front along the marking line. Press.

20



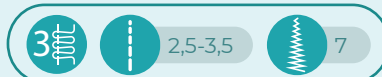
Fold the under fly lengthways, right side inside. Pin the lower edges and stitch them 10 mm (3/8") in from the edge.

21



Clip the corners.

22



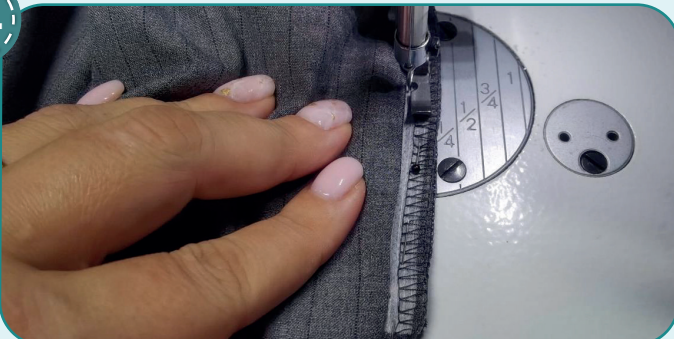
Turn the under fly out and press it. Use a serger to finish the seam allowances together. Press them.

23



Pin the under fly to the zipper wrong side aligning the zipper left edge with the under fly finished edges.

24



Working from the zipper side, stitch the zipper 7 mm (1/4") away from the edge.



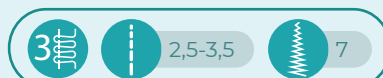
25



Affix the under fly edge to the fly front edge with a straight stitch about 10 mm (3/8").



26



Finish one of the long edges with serger. Fold the waistband in half, lengthways and press.

27



With right sides together, pin the waistband to the garment aligning the marks. Stitch the waistband 10 mm (3/8") in from the edge. Press the seam allowances to the waistband.

28



2,5-3

Fold the waistband in half, lengthways, right side inside. Pin the short edges, tucking the waistband's left half seam allowances inside. Stitch the waistband short edges 10 mm (3/8") in from the edge. Note that the right half of the waistband is sewn with L-shaped stitch

for the end of the stitching coincides with the waistband attaching seam end.

29



Clip the corners. Turn the waistband out and press.

NOTE: If you decide to use non-sew hook and bar closure, then do it at this step (similar to the children's model)

30

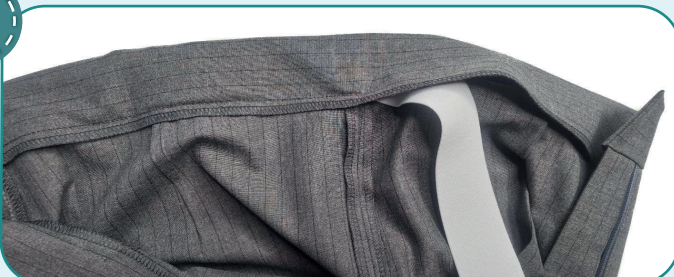


2,5-3

Topstitch the waistband raw edge from the right side, sewing exactly atop the waistband attaching seam. You can use unilateral zipper presser foot to attach it. Waistband's raw edge should be exactly caught into the seam. Stitch between the side seams on the back. Press the waistband.



31



Cut the elastic 40 mm (1 9/16") wide and with the length, indicated on the waistband pattern. Thread the elastic from the one of the side seams and pin one of its ends.

32



2,5-3

To affix the elastic, stitch across the waistband, continuing the side seam.



33



2,5-3

Tighten the elastic to the other side seam and pin it. To affix the elastic, stitch across the waistband, continuing the side seam.

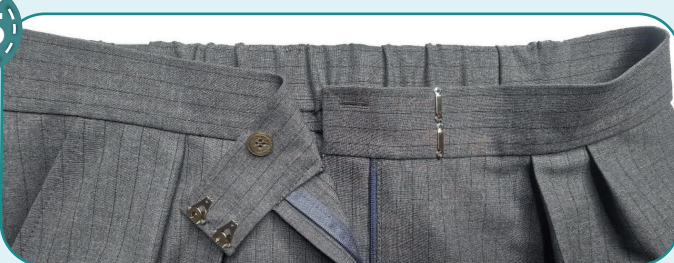
34



2,5-3

Stitch the waistband front parts with unilateral zipper presser foot sewing exactly atop the waistband attaching seam. Press.

35



Transfer the marking for the buttonhole, button, hooks and eyes from the paper pattern onto the waistband. Use the button prepared to make the buttonhole of the size you need, with the buttonholing presser foot. Use a seam ripper to cut the holes, but avoid cutting the stitching threads. Press them. To have

the stitches invisible, hand-baste the button, hooks and eyes only to one fabric layer.

NOTE: it is recommended to try it on, check the fit, length and ease. When trying the garment, consider the lower hem seam allowance width. Make sure, that the waistband is comfortable to wear. If need be, change the length of the elastic. You can attach 1 hook and bar closure in the children's model.



36



3



2,5-3,5



7

Finish the leg lower hems with serger. Press them.

37



Press the leg lower hems at 30 mm (1 3/16") towards the wrong side. Hem the pants with a blind stitch. Press them.



38



You can iron the garment from the wrong side. The pants are ready!



ELINA PATYKOVA

ПРО ШИТЬЕ

Palazzo pants

Thank you for joining my
team and me!
Share your works in my
groups. Hope you will stay
with us for our next project!



ELINA_PATKOVA



ELINA-PATKOVA.RU



VK.COM/ELINA_PATKOVA