

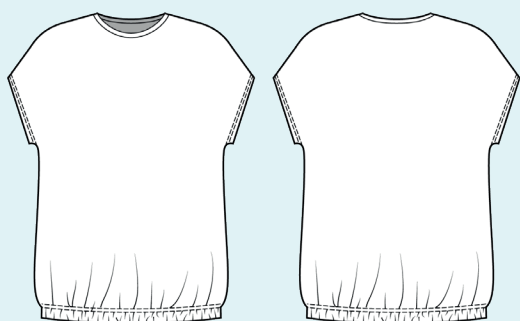
ELINA PATYKOVA

ПРО ШИТЬЕ

Instructions  
for sewing

Top  
Yes

#патыкова\_yes



Skill level



## Materials and notions



- cotton lycra jersey
- elastic 20 mm (13/16") wide
- matching thread
- Jersey 70-80 or Stretch 70-80 needles

If you are not sure about the fit of the garment, it is recommended to sew a muslin with similar properties (elasticity, thickness, drape) first. This will allow you

to adjust the length, width and fit of the garment and save time.



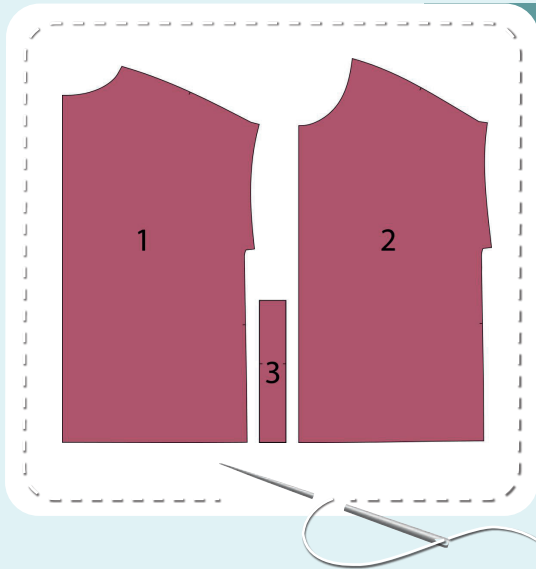
To find out how long a piece of fabric to take, you should place the pattern pieces onto the table, the floor or bedspread, pre-measured width equal to half the width of the selected fabric. Place the pieces, caring the direction of the grain line, their number, i.e., the way you will place them when cutting. Measure the length of the pattern pieces fit, add to this length 5% for the fabric shrinkage - this will be the required amount of fabric for the project. Before beginning your sewing project, wash the fabric on warm, dry, and iron it.

How to cut: Print and glue all the paper patterns. When printing, do not forget to check the size of the test square.

Put the paper pattern pieces onto the fabric. It is important to check that the grain is straight. Pin the paper pattern pieces to the fabric gently and cut the fabric along the outline. Note: seam allowances are already included. Transfer all the necessary marks from the pattern onto the wrong side of your fabric.



## Now you have



### TOP PIECES:

1. back - cut 1 on the fold
2. front - cut 1 on the fold
3. neckband - cut 1 on the fold

Construction

# Symbols



straight stitch



the stitch length in (mm)



flat lock stitch



zigzag stitch



the stitch width in (mm)



3-Step Zigzag Seam Finishing



unilateral zipper presser foot



universal presser foot



invisible zipper presser foot



pinning

You should lockstitch the seam and trim the thread tails or tie the seam thread tails and hide them into the seam after sewing a serger stitch or cover seaming chain stitch.



double welting (piping) presser foot



3-thread serger stitch



4-thread serger stitch

## NOTE

A

### 4-thread serger stitch

If you do not have a serger, you can use stretch stitches available on your sewing machine, or at least, a zigzag stitch.

B

### 3-thread serger stitch

If you do not have a serger, you can replace it with an overedge stitch, or a zigzag stitch.

C

### flat lock stitch

If you do not have a coverstitch machine, the flat seam can be performed with a) a twin needle on a sewing machine, b) decorative stretch seam on a sewing machine, c) finish the seams with serger and stitch them with a straight stitch.



# Top construction



1



4  
針



2,5-3,5



7

Pin the front and back along the shoulder edges with right sides together. Serge them. Press the seam allowances flat towards the front.

2



4  
針



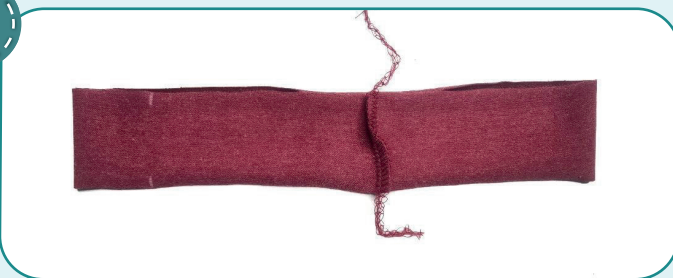
2,5-3,5



7

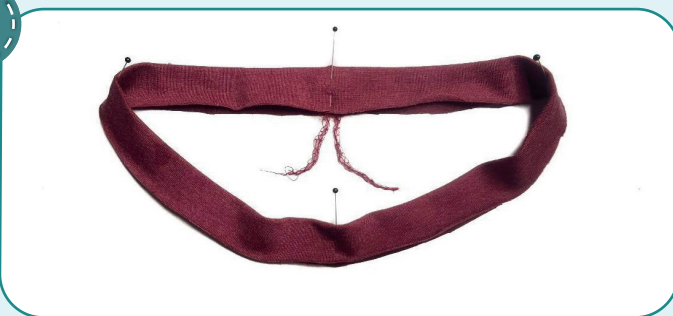
Serge the neckband short edges, having pinned the side edge beforehand.

3



To avoid bulk when stitching the neckband, press the seam allowances into different directions.

4



Fold the neckband in half and press it with wrong side inside. At the same time, shape the neckline with an iron, gently stretching the raw edges and ironing the fold. For convenience, the neckband can be pinned at the marked places.

5



Working from the right side, pin the neckband to the garment neckline. Align the neckband seam with the back neckline center, the neckband center - with the front neckline center, and align the rest marks with shoulder seams.

## TOP CONSTRUCTION



6



Measure the back neckline. Cut a strip of the main fabric 35 mm (1 3/8") wide and 20 mm (13/16") longer than the back neckline.

7



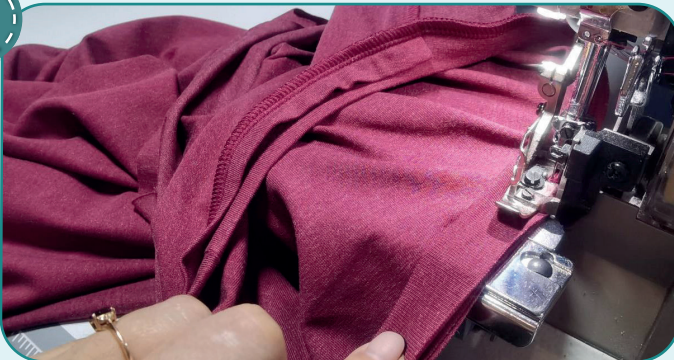
Fold the strip in half, lengthways, tucking its ends inside at 10 mm (3/8"). Press it.

8



Pin the strip along the back neckband wrong side aligning the edges. Place the strip between the shoulder seams with right side to the neckline. The neckband should be between the garment neckline and the strip.

9



4



2,5-3,5



7

Serge the neckband and the strip. While serging, stretch the neckband evenly, but avoid stretching the neckline itself. Press the seam and the strip down.





10



2,5-3

Pin or hand-baste the strip raw edge to the back overlapping the serged seam. Stitch the strip to the back 1 mm (1/16") in from the edge covering the serged seam. Press the back neckline.

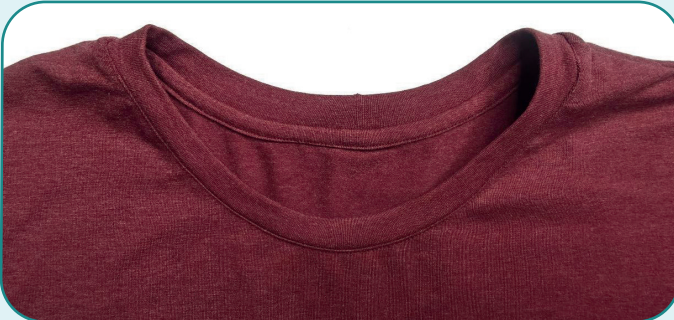


11



2,5-3

Edgestitch the neckline between the shoulder seams 1 mm (1/16") away from the neckband attaching seam. Press it.



12

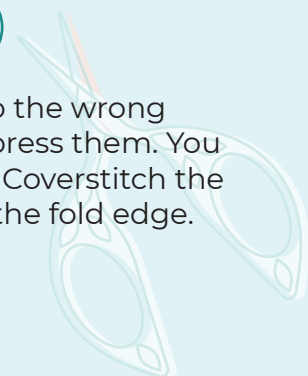


2,5-3



5,6

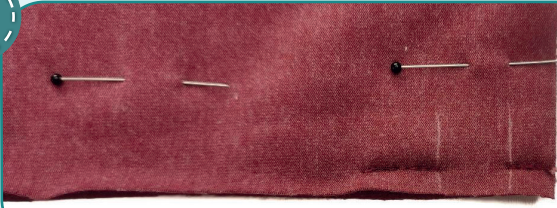
Fold the armhole edges to the wrong side at 15 mm (9/16") and press them. You can hand-baste the edge. Coverstitch the edges. Finish stitching at the fold edge. Press the garment.



## TOP CONSTRUCTION



13



2,5-3

Pin the back and the front along the side seams with right sides together. Stitch two seams at one of the side seam end 7 mm (1/4") away from the edge. Stitches are 10 (3/8") and 15-20 mm (9/16 - 13/16")

long, and the distance between them is 15 mm (9/16"). This will be a hole for inserting the elastic.

14



2,5-3,5

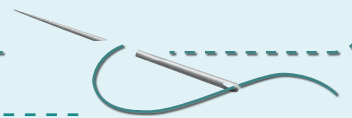


7

Serge the side edges. Start stitching the side seam (with the hole in it) 30 mm (1 3/16") away from the lower hem. At the armhole area, stitch gradually to the edge, tie the thread tails and hide them into

the seams. Press the seam allowances towards the front but press them open at the hole area.

**NOTE:** It is recommended to try it on, check the fit, length and ease. When fitting, consider the lower hem width.



15



2,5-3

Stitch along the side seam about 10-15 mm (3/8-9/16") to affix the side seam allowances.

16



2,5-3



5,6

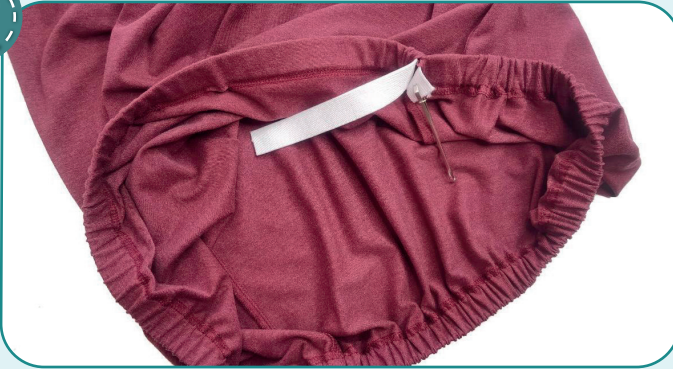
Fold the garment lower hem at 27 mm (1 1/16") to the wrong side and press it. You can hand-baste the edge. Coverstitch the lower hem. Tie the seam thread tails on the wrong side and hide them into the seam. Press the garment.



## TOP CONSTRUCTION



17



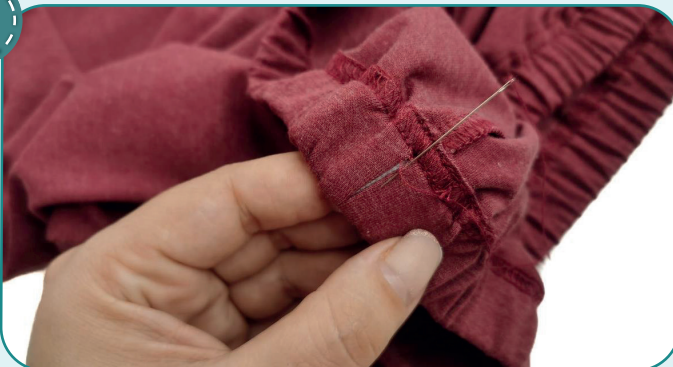
Cut the elastic 20 mm (13/16") wide and the length, indicated on the paper pattern. Thread it through the hole with a safety pin or a bodkin.

18



Join the ends of the elastic in a ring with a straight or a zig-zag stitch. Evenly spread the elastic inside the folded lower hem.

19



Hand-baste the hole with a blind stitch.

20



Remove the basting stitches, trim and hide the thread tails, and press the garment. The Top is ready.



ELINA PATYKOVA

ПРО ШИТЬЕ

Top  
Yes

Thank you for joining my  
team and me!  
Share your works in my  
groups. Hope you will stay  
with us for our next project!

