

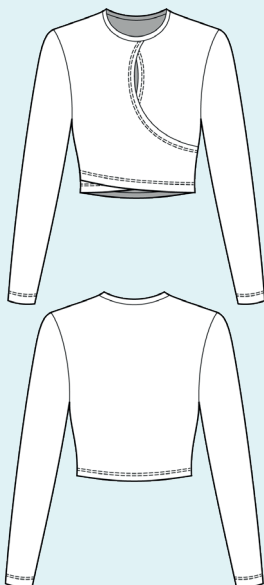
ELINA PATYKOVA

ПРО ШИТЬЕ

Instructions
for sewing

Long-sleeve Wrap Top Element

#патыкова_элемент



Skill level



ELINA_PATKOVA



ELINA-PATKOVA.RU



VK.COM/ELINA_PATKOVA

Materials and notions



- cotton lycra jersey
- matching thread
- Super Stretch 70-80 needles

If you are not sure about the fit of the garment, it is recommended to sew a muslin with similar properties (elasticity, thickness, drape) first. This will allow you

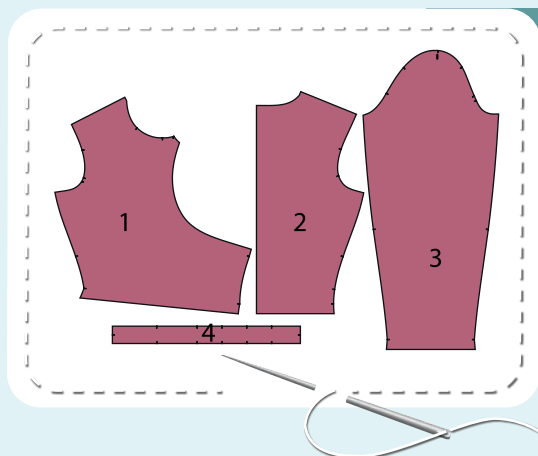
to adjust the length, width and fit of the garment and save time.

To find out how long a piece of fabric to take, you should place the pattern pieces onto the table, the floor or bedspread, pre-measured width equal to half the width of the selected fabric. Place the pieces, caring the direction of the grain line, their number, i.e., the way you will place them when cutting. Measure the length of the pattern pieces fit, add to this length 5% for the fabric shrinkage - this will be the required amount of fabric for the project. The fabric must be prepared for sewing: washed in warm water, dried, and ironed.

How to cut Print and glue all the paper patterns. When printing, do not forget to check the size of the test square.

Put the paper pattern pieces onto the fabric. It is important to check that the grain is straight. Pin the paper pattern pieces to the fabric gently and cut the fabric along the outline. Note: seam allowances are already included. Transfer all the necessary marks from the pattern onto the wrong side of your fabric.

Now you have



TOP PIECES

- 1. front - cut 2
- 2. back - cut 1 on the fold
- 3. sleeve - cut 2
- 4. neckband - cut 1 on the fold

Construction

Symbols



straight stitch



the stitch length in (mm)



flat lock stitch



zigzag stitch



the stitch width in (mm)



3-Step Zigzag Seam Finishing



unilateral zipper presser foot



universal presser foot



invisible zipper presser foot



pinning

You should lockstitch the seam and trim the thread tails or tie the seam thread tails and hide them into the seam after sewing a serger stitch or cover seaming chain stitch.



double welting (piping) presser foot



3-thread serger stitch



4-thread serger stitch

NOTE

A

4-thread serger stitch

If you do not have a serger, you can use stretch stitches available on your sewing machine, or at least, a zigzag stitch.

B

3-thread serger stitch

If you do not have a serger, you can replace it with an overedge stitch, or a zigzag stitch.

C

flat lock stitch

If you do not have a coverstitch machine, the flat seam can be performed with a) a twin needle on a sewing machine, b) decorative stretch seam on a sewing machine, c) finish the seams with serger and stitch them with a straight stitch.



Top construction



1



2,5-3



5,6

Fold the front wrap part curved edge to the wrong side at 15 mm (9/16") and press it. Fold the front lower hem at 20 mm (13/16") and press it. You can hand baste the edges. Coverstitch the hems. Tie the thread tails on the wrong side. Press the seams again. Repeat the process for the other front.

2



2,5-3

Place the right front atop the left front, faced up. Align the marks. Affix them along the side edges and the neckline with straight stitching 5 mm (3/16") in from the edge.

3



2,5-3,5



7

Pin the front and the back shoulders with right sides together. Serge them. Press the seam allowances flat towards the front.

4



2,5-3,5



7

With right sides together, pin the sleeve into the armhole, aligning all the marks. Serge it in place. Press the seam allowances towards the front and the back. Repeat the process for the other sleeve.

5



4

2,5-3,5

7

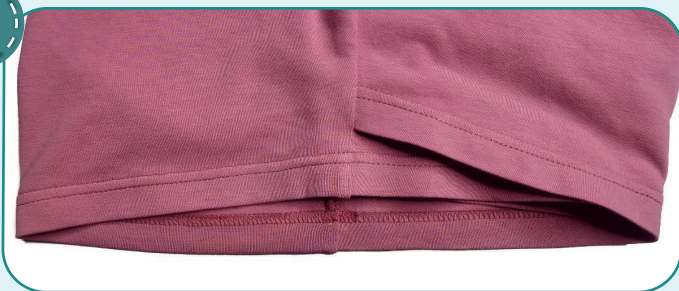
Pin the back and the front along the side seam with right sides together. Pin the sleeve along the side seam with right sides together. Tuck the back lower hem seam allowances around the front lower hem. Serge the pieces. To avoid bulk, place the sleeve attaching seam allowances in different directions. Repeat the process for the opposite side seam.

6



Press the side seams towards the back. Fold the back lower hem 20 mm (13/16") towards the wrong side and press it. You can hand baste the edges.

7



2,5-3

5,6

Coverstitch the back lower hem. The seam should match the front lower hems stitching. Tie the thread tails on the wrong side. Press the garment.

8



4

2,5-3,5

7

Serge the neckband short edges, having pinned the side edge beforehand.

9



To avoid bulk when attaching the neckband, press the ends of the seam allowances in different directions.

TOP CONSTRUCTION

10



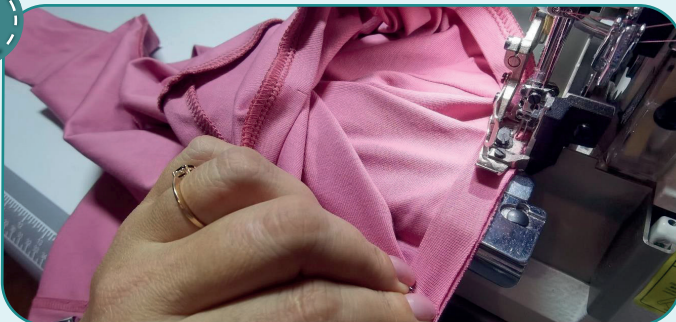
Fold the neckband in half, lengthways, wrong side inside, and press it. At the same time, shape the neckline with an iron, gently stretching the raw edges and ironing the fold. For convenience, the neckband can be pinned at the marked places.

11



Pin the neckband to the garment neckline right side. Align the neckband seam with one of the shoulder seams, the remaining marks: with the front neckline marks, the other shoulder seam, the front center and the back center.

12



4

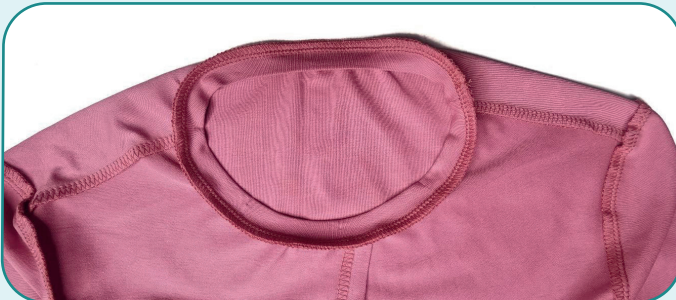


2,5-3,5

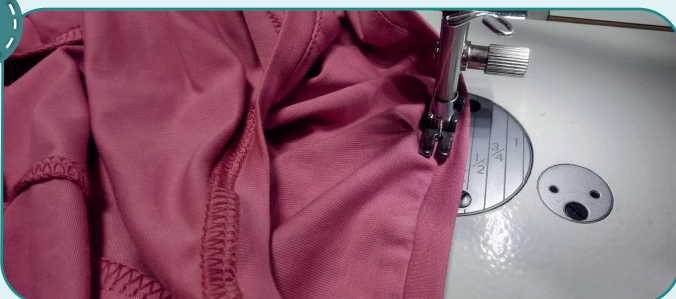


7

Serge the neckband to the garment. While serging, stretch the neckband evenly, but avoid stretching the neckline itself. Press the seam down.

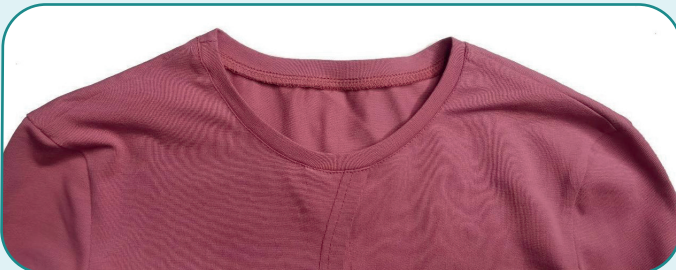


13



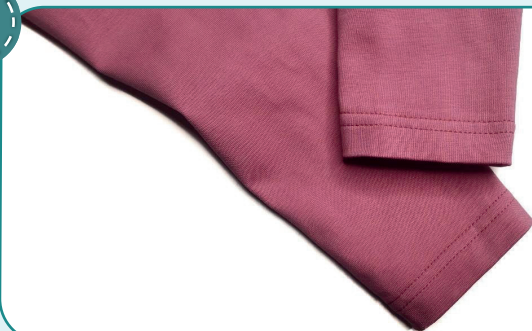
2,5-3

Topstitch the neckline 1 mm (1/16") away from the neckband attaching seam. Press the neckline.





14



Fold the sleeve lower hems 20 mm (13/16") to the wrong side and press them. You can hand-baste the edge. Hem the sleeves with a coverstitch machine. Tie the seam thread tails on the wrong side and hide them into the seam. Press the garment.

15



Remove the basting stitches, trim, and hide the thread tails and press the garment. The Long sleeve wrap top is ready!



ELINA PATYKOVA

ПРО ШИТЬЕ

Long-sleeve Wrap Top Element

Thank you for joining my team and me!
Share your works in my groups. Hope you will stay with us for our next project!



ELINA_PATKOVA



ELINA-PATKOVA.RU



VK.COM/ELINA_PATKOVA