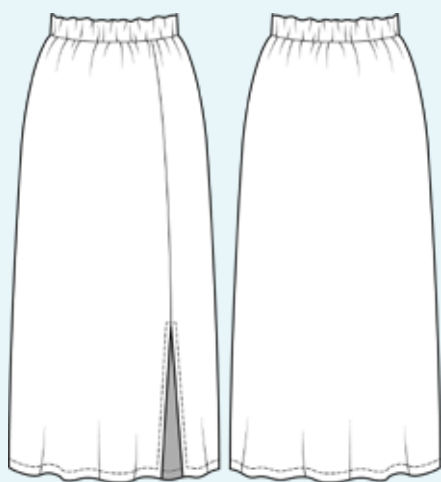


ELINA PATYKOVA
ВЫКРОЙКИ

Instructions
for sewing

Staple Skirt

#патыкова_штапель



Skill level



Materials and notions



- staple fabric
- elastic 40-50 mm (1 9/16-2") wide
- matching thread
- Universal 70-80 needles

If you are not sure about the fit of the garment, it is recommended to sew a muslin with similar properties (elasticity, thickness, drape) first. This will allow you

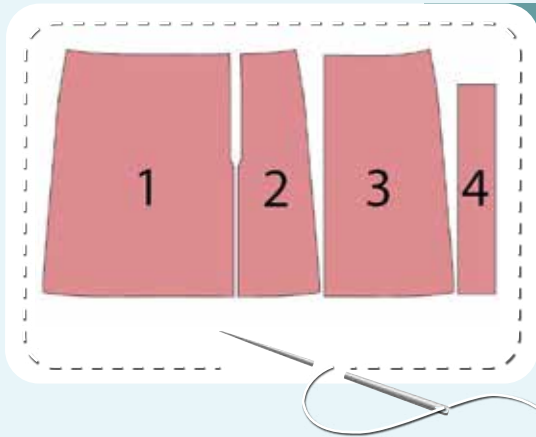
to adjust the length, width and fit of the garment and save time.

To find out how long a piece of fabric to take, you should place the pattern pieces onto the table, the floor or bedspread, pre-measured width equal to half the width of the selected fabric. Place the pieces, caring the direction of the grain line, their number, i.e., the way you will place them when cutting. Measure the length of the pattern pieces fit, add to this length 5% for the fabric shrinkage - this will be the required amount of fabric for the project. Before beginning your sewing project, wash the fabric in warm water, dry and iron it.

How to cut: Print and glue the paper patterns. When printing, do not forget to check the size of the test square.

Lay the paper pattern pieces onto the fabric. It is important to check that the grain is straight. Pin the paper pattern pieces to the fabric gently and cut the fabric along the outline. Note: seam allowances are already included. Transfer all the necessary marks from the pattern onto the wrong side of your fabric.

Now you have



SKIRT PIECES:

1. right front skirt panel - cut 1 (CUT FACED UP)
2. left front skirt panel - cut 1 (CUT FACED UP)
3. back skirt panel - cut 1 on the fold
4. waistband - cut 1 on the fold

Construction

Symbols



straight stitch



the stitch length in (mm)



flat lock stitch



zigzag stitch



the stitch width in (mm)



3-Step Zigzag Seam Finishing



unilateral zipper presser foot



universal presser foot



invisible zipper presser foot



pinning

You should lockstitch the seam and trim the thread tails or tie the seam thread tails and hide them into the seam after sewing a serger stitch or cover seaming chain stitch.



double welting (piping) presser foot



3-thread serger stitch



4-thread serger stitch

NOTE

A

4-thread serger stitch

If you do not have a serger, you can use stretch stitches available on your sewing machine, or at least, a zigzag stitch.

B

3-thread serger stitch

If you do not have a serger, you can replace it with an overedge stitch, or a zigzag stitch.

C

flat lock stitch

If you do not have a coverstitch machine, the flat seam can be performed with a) a twin needle on a sewing machine, b) decorative stretch seam on a sewing machine, c) finish the seams with serger and stitch them with a straight stitch.



Skirt construction



1



Finish the center edges of the fronts with a serger. Press them.

2



With right sides together, pin the back and the front skirt panels along the side edges. Stitch them 10 mm (3/8") in from the edge.

3



Finish the side edges with serger. Press the seam allowances flat towards the front.

4



With right sides together, pin both front panels from the upper edge to the split top mark. Stitch them 10 mm (3/8") in from the edge. Finish stitching at the split top mark.

5



Press the seam allowances open. Press the split down (allowances are 20 mm (13/16")).

SKIRT CONSTRUCTION



6



3

3-4

7

Finish the garment lower edge with serger. Press it.

7



Press out the garment lower hem to the wrong side at 30 mm (1 3/16"). Align the split lower edges.

8



↺

3-4

↺

2,5-3

First topstitch the garment lower hem 25 mm (1") in from the edge and then topstitch the split 15 mm (9/16") in from the edge. Press the seams.

9



↺

3-4

↺

2,5-3

Place the waistband in half, with right side inside, and pin it along the short edges. Stitch the waistband in a ring with two straight seams 60 mm (2 3/8") and 15 mm (9/16"), leaving an opening for the elastic. Press the seam allowances open.

10



Fold the waistband in half, lengthwise, with the wrong side inside and press it.

SKIRT CONSTRUCTION

11



Pin the waistband to the garment upper edge with right sides together. Align the waistband seam with the back skirt panel center, align the waistband center with the front skirt panel center. Align the

marks with the side seams. Stitch the pieces 10 mm (3/8") in from the edge.

12



Serge the seam allowances together. Press the seam allowances downwards.

13



Cut the elastic 40 mm (1 9/16") wide and with the length, indicated on the waistband pattern. Thread it through the opening in the waistband with a safety pin or a bodkin.

NOTE: The pattern provides the elastic 50 mm (2") wide, which is sewn together with the waistband. Join the ends of the elastic together by a straight or a zigzag stitch. Place the elastic into the waistband. Topstitch the waistband edges together with the elastic 7 mm (1/4") in from the edge. When attaching the waistband, evenly stretch it, but care the fold to be close to the elastic. Serge slowly, when stretching the elastic, the serger needles should be at their lowest position. Then stitch the waistband to the garment upper edge 1 cm (3/8") in from the edge. Finish the edges.

14



Join the ends of the elastic together by a straight or a zigzag stitch. Spread the elastic evenly around the waistband.

NOTE: It is recommended to try it on, check the fit, length and ease. Make sure that the waistband is comfortable to wear. If necessary, change the length of the elastic.

SKIRT CONSTRUCTION



15



Hand baste the opening in the waistband with a blind stitch.

16



Stretching the elastic evenly, stitch two seams 15 mm (9/16") and 30 mm (1 3/16") away from the waistband fold.



17



Remove the basting stitches, trim and hide the thread tails and press the garment once again. The skirt is ready.

ELINA PATYKOVA
ВЫКРОЙКИ

Staple Skirt

Thank you for joining my team and me!
Share your works in my groups. Hope you will stay with us for our next project!

