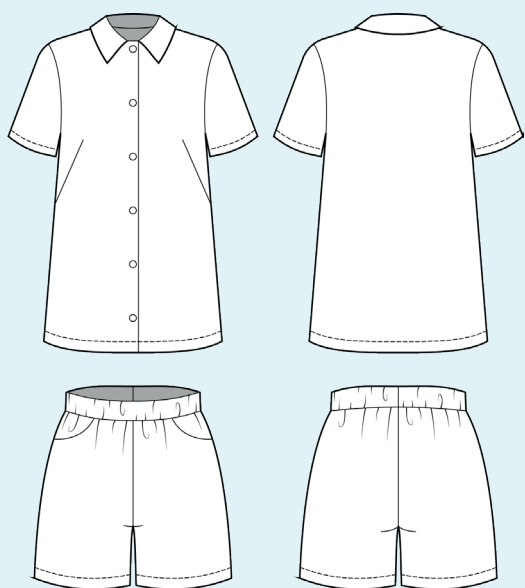


ELINA PATYKOVA
ВЫКРОЙКИ

Instructions
for sewing

Muslin Suit

#патыкова_муслин



Skill level



Materials and notions



- muslin
- fusible interfacing with a density of 45-50 g/m²
- stabilizing tape (a strip of fusible interfacing, cut on the bias, with a chain stitch in the center)
- buttons 12-15 mm (1/2-9/16") - 6 pcs
- elastic 40 mm (1 9/16") wide
- matching thread
- Universal 80 needles

If you are not sure about the fit of the garment, it is recommended to sew a muslin with similar properties (elasticity, thickness, drape) first. This will allow you

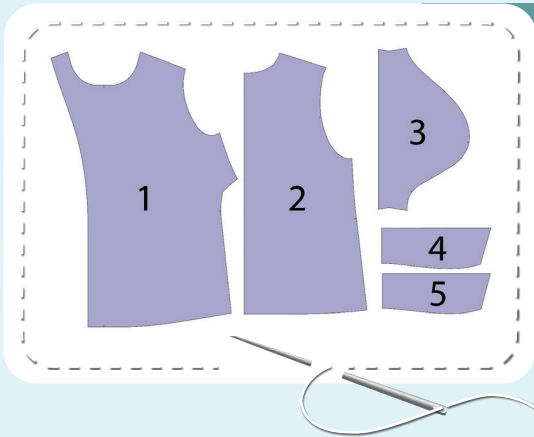
to adjust the length, width and fit of the garment and save time.

To find out how long a piece of fabric to take, you should place the pattern pieces onto the table, the floor or bedspread, pre-measured width equal to half the width of the selected fabric. Place the pieces, caring the direction of the grain line, their number, i.e., the way you will place them when cutting. Measure the length of the pattern pieces fit, add to this length 5% for the fabric shrinkage - this will be the required amount of fabric for the project. Before beginning your sewing project, wash the fabric in warm water, dry and iron it.

How to cut: Print and glue all the paper patterns. When printing, do not forget to check the size of the test square.

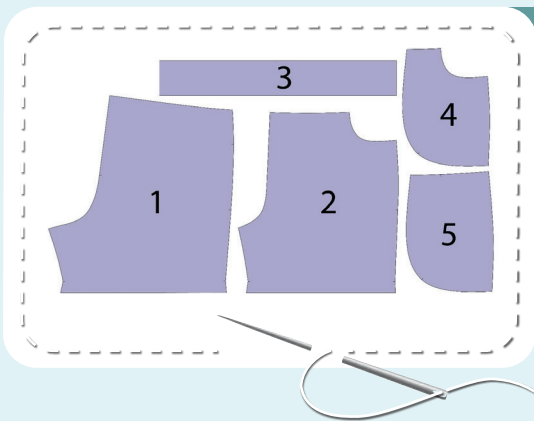
Put the paper pattern pieces onto the fabric. It is important to check that the grain is straight. Pin the paper pattern pieces to the fabric gently and cut the fabric along outline. Note: seam allowances are already included. Transfer all the marks from the pattern onto the wrong side of your fabric.

Cutting layout



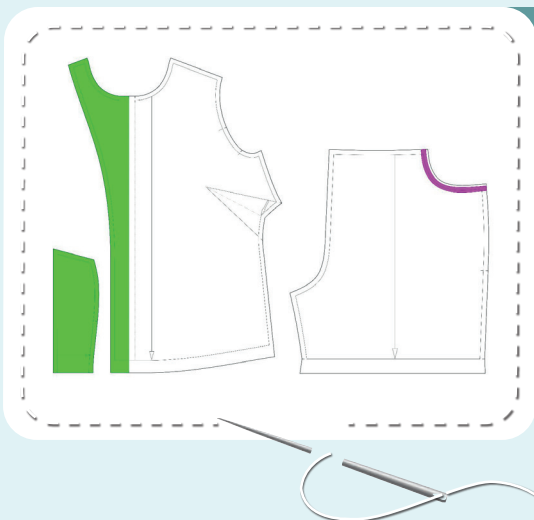
SHIRT PIECES (MUSLIN):

1. front – cut 2
2. back – cut 1 on the fold
3. sleeve – cut 2
4. under collar – cut 1 on the fold
5. upper collar – cut 1 on the fold



SHORTS PIECES (MUSLIN):

1. back – cut 2
2. front – cut 2
3. waistband – cut 1 on the fold
4. pocket lining – cut 2
5. side front – cut 2



PIECES TO INTERFACE

- Green - fusible interfacing
 - under collar
 - front facings
- Purple - stabilizing tape (a strip of fusible interfacing, cut on the bias, with a chain stitch in the center)
 - pocket opening area on the shorts front

Construction

Symbols



straight stitch



the stitch length in (mm)



flat lock stitch



zigzag stitch



the stitch width in (mm)



3-Step Zigzag Seam Finishing



unilateral zipper presser foot



universal presser foot



invisible zipper presser foot



pinning

You should lockstitch the seam and trim the thread tails or tie the seam thread tails and hide them into the seam after sewing a serger stitch or cover seaming chain stitch.



double welting (piping) presser foot



3-thread serger stitch



4-thread serger stitch

NOTE

A

4-thread serger stitch

If you do not have a serger, you can use stretch stitches available on your sewing machine, or at least, a zigzag stitch.

B

3-thread serger stitch

If you do not have a serger, you can replace it with an overedge stitch, or a zigzag stitch.

C

flat lock stitch

If you do not have a coverstitch machine, the flat seam can be performed with a) a twin needle on a sewing machine, b) decorative stretch seam on a sewing machine, c) finish the seams with serger and stitch them with a straight stitch.



Shirt construction

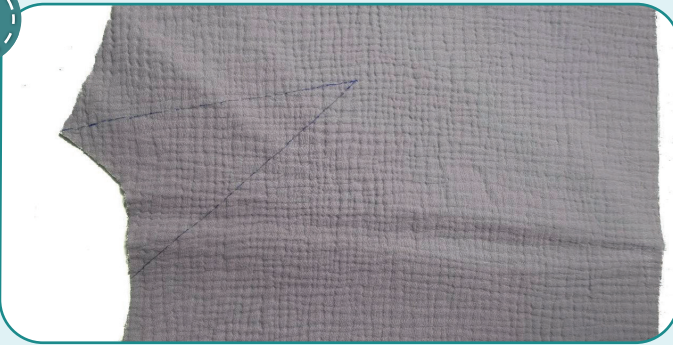


1



Duplicate the under collar and front facings.

2

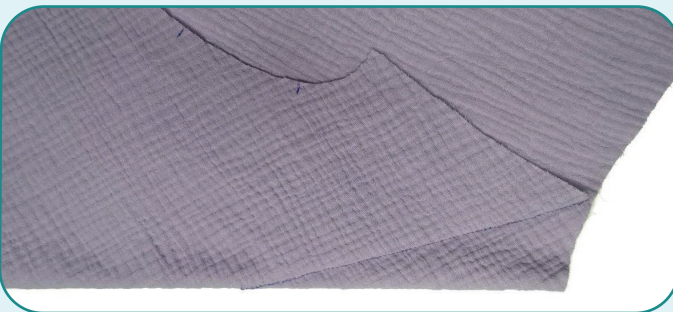


Transfer the darts marking onto the front wrong side.

3



Pin and baste the darts, evenly aligning their sides. Stitch the darts along the marking line. Press them up.



NOTE: If you lack experience, it is better to hand-baste before stitching.



SHIRT CONSTRUCTION



4



2,5-3

With right sides together, pin the front and the back along the shoulder and side edges. Stitch the pieces 10 mm (3/8") in from the edge.

5



3-4



7

Finish the shoulders and side seams with 3-thread serger stitch. Press the seam allowances towards the back.

6



2,5-3

Pin the upper and under collars with right sides together, matching the edges. Stitch them 10 mm (3/8") in from the edge.

7



Trim the under collar seam allowance to 5 mm (3/16"). So, the allowances, cut gradually, will stand out less on the collar right side. Remove surplus fabric at the points. Turn the collar out and smooth the corners. Press it forming a roll towards the under collar.

8



3-4



7

Finish the front facings center and shoulder edges and the lower hem with a serger. Press them.

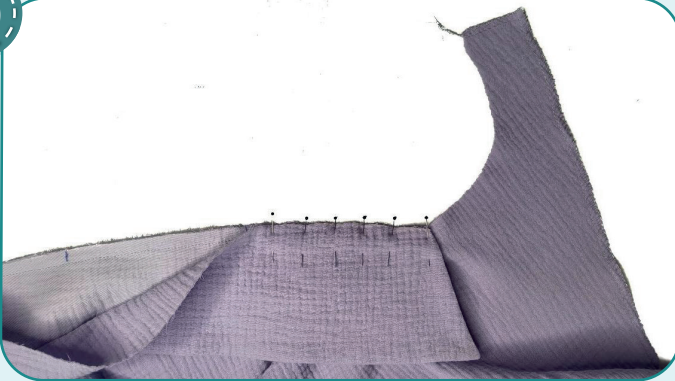
9



2,5-3

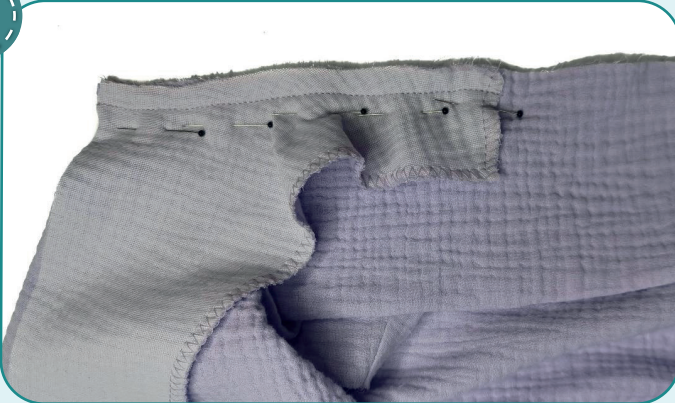
Pin the under collar to the back neckline with right sides together aligning the marks. Stitch from one shoulder seam to the other, 10 mm (3/8") in from the edge.

10



Align the collar lower edges and pin them to the front neckline. The collar edges should match with the marks on the front neckline.

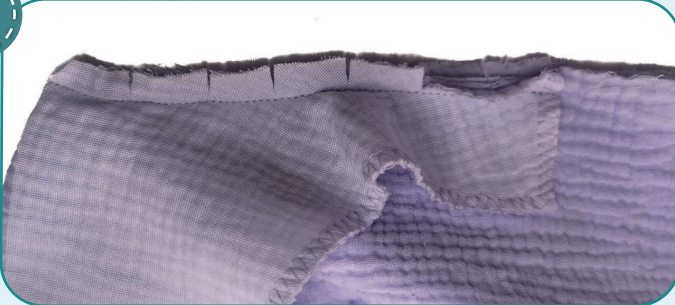
11



2,5-3

Place the front facings over the upper collar (right sides together) and pin them. Stitch the front, the collars and the front facings with one seam 10 mm (3/8") in from the edge. Finish stitching on the front facing shoulder edges. It means that you should not stitch the upper collar edge along the back.

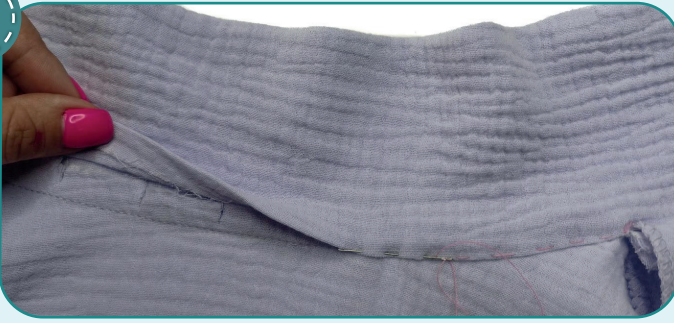
12



Trim both collars seam allowance to 4-5 mm (3/16"). Trim the seam allowances right at the corner points. Slash the seam allowances of the collars and the neckline at the shoulder marks leaving 1 mm (1/16") before the stitching. Slash the neckline curved edges. Turn out the front facings to the right side. Iron them. Press the back neckline seam allowances towards the collar.



13



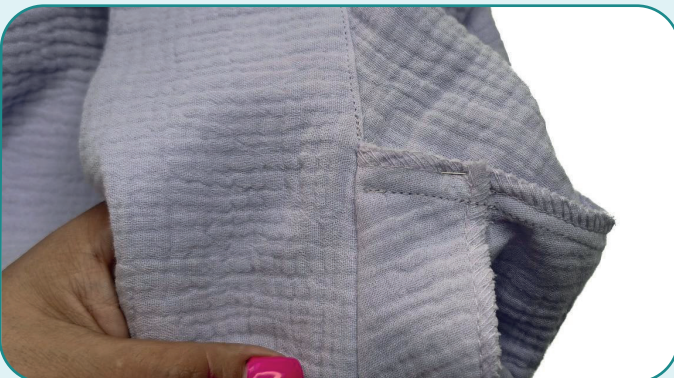
Tuck the upper collar seam allowances inside. Hand-baste the upper collar edge to the back neckline with this edge covering the attaching seam. Press it.

14



Working from the right side, stitch the collar to the garment between the shoulder seams having the needle go exactly atop the collar attaching seam. The upper collar edge should be exactly in the seam. If it seems difficult, you can hand-baste the collar with a blind stitch. Press the neckline.

15



Align the shoulder seams with the front-facing shoulder edges. Secure them with straight seams sewn as close to the collar as possible or hand-stitch them.



SHIRT CONSTRUCTION



16



Press out the front facings on the garment fronts and lower hem 30 mm (1 3/16") to the wrong side.

17



2,5-3

Fold the front facing lower edge towards the right side. Stitch along the lower edge 30 mm (1 3/16") in from the edge.

18



Remove surplus fabric at the corner point. Trim the seam allowance to 5 mm (3/16"). Turn the front facing out and press it. Repeat the process for the opposite front facing (steps 17-18).

19



2,5-3

Stitch the garment lower hem 25 mm (1") in from the edge.

20



2,5-3

Pin the sleeve along the side edges with right side inside. Stitch the seam 10 mm (3/8") in from the edge.



21



Finish the edges with a 3-thread serger stitch. Press the seam allowances towards the front.

22



Finish the sleeve lower hem with the serger. Press it.

23



Press the sleeve lower hem to the wrong side at 30 mm (1 3/16"). Stitch it 25 mm (1") in from the edge.

24



Stitch two parallel seams along the sleeve cap 6 mm (1/4") and 4 mm (1/8") away from the edge. Set the stitch maximum length (4-5 mm), do not bar tack the seam ends and leave the thread tails at least 50 mm (2").

25



Pin the sleeve to the garment armhole, right sides together. Align the side seams and the marks. You can see there surplus of fabric along the sleeve cap.



26



Pull up the gathers to make the sleeve cap fit the armhole. To do it use the upper thread tails of two rows of long stitches along the sleeve cap. Tie the thread tails. To avoid forming crease marks, readjust the folds along the whole sleeve head. Baste along the sleeve cap.

27



Stitch the sleeve into the armhole around the edge 10 mm (3/8") in from the edge. Stitch on the sleeve side, caring there aren't any folds along the sleeve head.

28



Finish the seam allowances with the serger. Press the seam up. Repeat the process for the other sleeve (steps 20-28).

29



Transfer the marks for the buttonholes from the pattern onto the right front. Use the buttonholing foot to sew buttonholes to the size of the buttons prepared. Carefully cut the buttonholes with the seam ripper, but avoid cutting the stitching threads. Iron them. Transfer the marking for the buttons onto the left front. Hand-stitch or machine the buttons.





30



Remove the basting stitches, trim the thread tails and press the garment. The shirt is ready!



Shorts construction



1



Fuse pieces of stabilising tape to the pocket openings on the fronts.

2



With right sides together, pin the pocket lining to the garment front along the pocket opening. Stitch the pieces 10 mm (3/8") in from the edge.

3



Slash the seam allowances every 10-15 mm (3/8-9/16") leaving 1 mm (1/16") before the stitching.

4



Turn the pocket out, forming a roll towards the pocket lining. Topstitch the pocket opening 7 mm (1/4") in from the edge. Press the pocket opening again.



5



2,5-3

Pin the pocket side front to the lining with right sides together. Stitch the seam 10 mm (3/8") in from the edge.

6



3-4



7

Finish the seam allowances with the serger. Press the pocket.

7



2,5-3

Secure the pocket bag with straight stitching above and below the pocket opening 7 mm (1/4") away from the edge. Repeat the process for the opposite pocket (steps 2-7).

8



2,5-3

Pin the front and the back along the side seam and inseam. Stitch the pieces 10 mm (3/8") in from the edge.





9



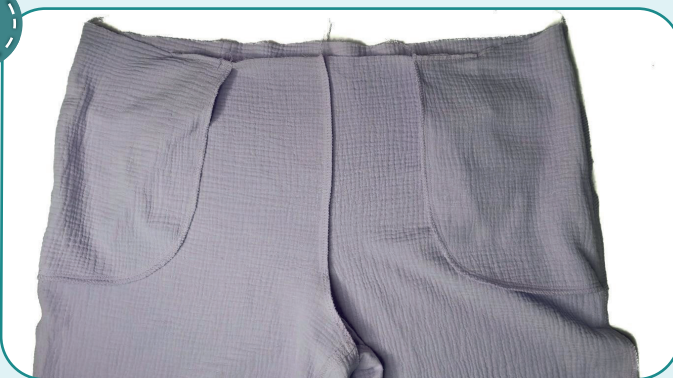
Finish the inseams and side seams with serger. Press the inseam allowances towards the front. Press the side seam allowances towards the back.

10



Insert the left pant leg into the right one with right sides together. Pin the crotch seam aligning the marks and the inseams. Stitch the seam 10 mm (3/8") in from the edge.

11



Finish the crotch seam allowances with serger. Press the seam allowances towards the right.

12



Fold and pin the waistband along the short edges with right side inside. Stitch the waistband 10 mm (3/8") in from the edge. Press the seam allowances open.





13



Fold the waistband in half, lengthways, wrong side inside and press it.

14



Cut the elastic 40 mm (1 9/16") wide and with the length, indicated on the shorts waistband pattern. Join the ends of the elastic together by a straight or a zigzag stitch. Divide the waistband and the elastic in quarters and pin at the marks. Place the elastic into the waistband, align the marks on the elastic and the waistband and pin them at these places. To avoid bulk, do not align the elastic and the waistband seams.

15



Stitch the waistband edges, together with the elastic in it, 7 mm (1/4") in from the edge. While stitching, evenly stretch the elastic, and care the waistband fold to be close to the elastic. Sew very slowly. When stretching the elastic, care the needle to be at its lowest position.



NOTE: the elastic should be 40 mm (1 9/16") wide and sewn to the shorts together with the waistband. But if you're not sure about the length of the elastic, or if you doubt that the serger can handle a large thickness, then use elastic 35 mm (1 3/8") wide. In that case, stitch the waistband without elastic (be sure to leave a hole for it), and then thread the elastic and stitch it into a ring.



16



Turn the garment out to the wrong side and place the waistband with the elastic inside it. Pin the waistband to the garment upper edge, with right sides together, aligning the waistband seam with the garment back crotch seam, waistband center with the front crotch seam and the marks with the side seams.

17

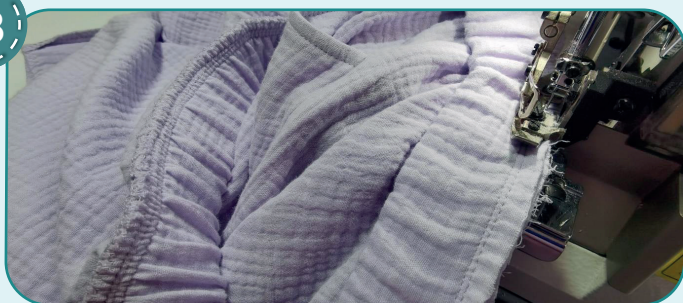


Stitch the waistband 10 mm (3/8") in from the edge. When stitching, evenly stretch the elastic.

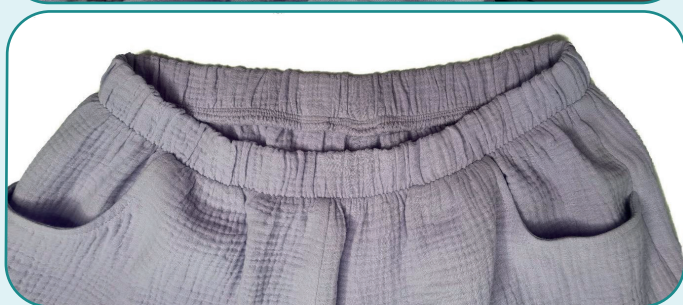


NOTE: It is recommended to try it on, check the fit, length and ease. When fitting, consider the lower hem width. Make sure, the waistband is comfortable to wear.

18



Evenly stretching the elastic, finish the seam allowances with serger. Press the seam allowances downwards.





19



Finish the shorts lower hems with serger.

20



Fold the shorts lower hems 30 mm (1 3/16") towards the wrong side and press them. You can hand-baste the edges. Stitch them in place 25 mm (1") in from the edge. Press.



21



Remove the basting stitches, trim the thread tails and press the garment. The shorts are ready!



ELINA PATYKOVA
ВЫКРОЙКИ

Muslin Suit

Thank you for joining my
team and me!
Share your works in my
groups. Hope you will stay
with us for our next project!

