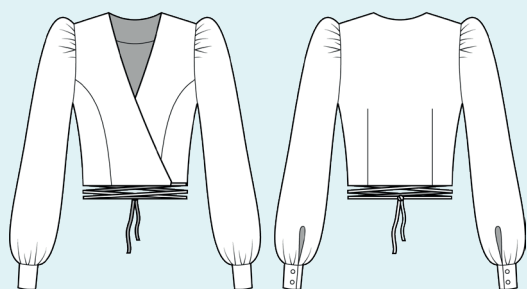


ELINA PATYKOVA
ВЫКРОЙКИ

Instructions
for sewing

Overlap Blouse

#патыкова_перехлест



Skill level



Materials and notions



- cotton fabric
- woven interfacing
- buttons 10-15 mm (3/8 - 5/8") - 4 pcs
- matching thread
- Universal 70-80 needles

If you are not sure about the fit of the garment, it is recommended to sew a muslin with similar properties (elasticity, thickness, drape) first. This will allow you

to adjust the length, width and fit of the garment and save time.



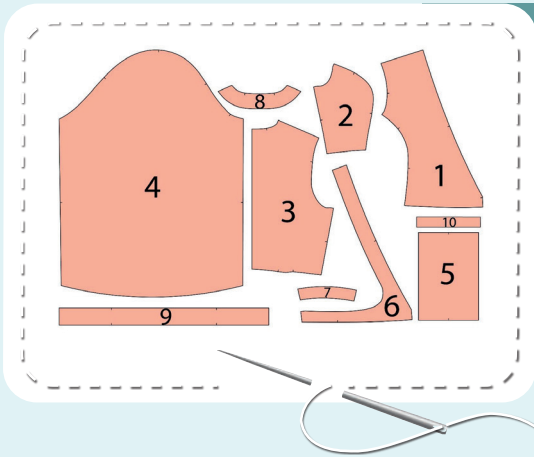
To find out how long a piece of fabric to take, you should place the pattern pieces onto the table, the floor or bedspread, pre-measured width equal to half the width of the selected fabric. Place the pieces, caring the direction of the grain line, their number, i.e., the way you will place them when cutting. Measure the length of the pattern pieces fit, add to this length 5% for the fabric shrinkage - this will be the required amount of fabric for the project. Before beginning your sewing project, wash the fabric in warm water, dry and iron it.

Cutting layout: Print and glue all the paper patterns. When printing, do not forget to check the size of the test square.

Put the paper pattern pieces onto the fabric. It is important to check that the grain is straight. Pin the paper pattern pieces to the fabric gently and cut the fabric along them. Note: seam allowances are already included. Transfer all the necessary marks from the pattern onto the wrong side of your fabric.

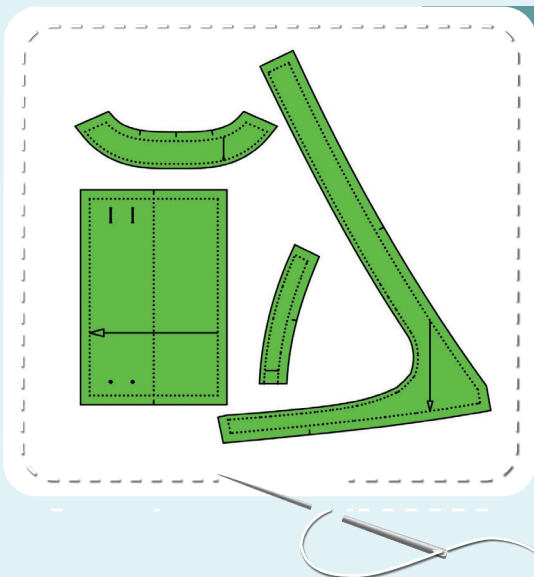


Cutting layout



BLOUSE PIECES:

1. center front - cut 2
2. side front - cut 2
3. back - cut 1 on the fold
4. sleeve - cut 2
5. sleeve cuff - cut 2
6. neck and front lower hem facing - cut 2
7. back lower hem facing - cut 1 on the fold
8. back neck facing - cut 1
9. tie - cut 2 on the fold
10. sleeve bias strip - cut 2



PIECES TO INTERFACE:

- Green – woven interfacing
 - sleeve cuffs
 - neck and front lower hem facings
 - back neck facing
 - back lower hem facing

Construction

Symbols



straight stitch



the stitch length in (mm)



flat lock stitch



zigzag stitch



the stitch width in (mm)



3-Step Zigzag Seam Finishing



unilateral zipper presser foot



universal presser foot



invisible zipper presser foot



pinning

You should lockstitch the seam and trim the thread tails or tie the seam thread tails and hide them into the seam after sewing a serger stitch or cover seaming chain stitch.



double welting (piping) presser foot



3-thread serger stitch



4-thread serger stitch

NOTE

A

4-thread serger stitch

If you do not have a serger, you can use stretch stitches available on your sewing machine, or at least, a zigzag stitch.

B

3-thread serger stitch

If you do not have a serger, you can replace it with an overedge stitch, or a zigzag stitch.

C

flat lock stitch

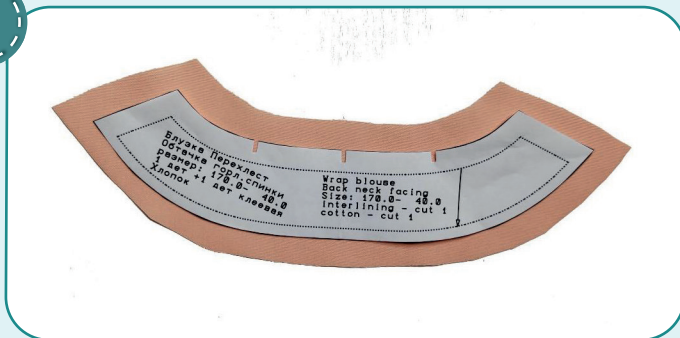
If you do not have a coverstitch machine, the flat seam can be performed with a) a twin needle on a sewing machine, b) decorative stretch seam on a sewing machine, c) finish the seams with serger and stitch them with a straight stitch.



Blouse construction

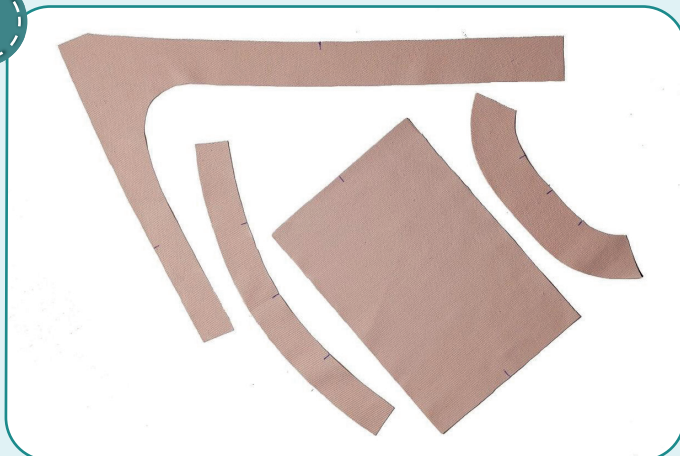


1



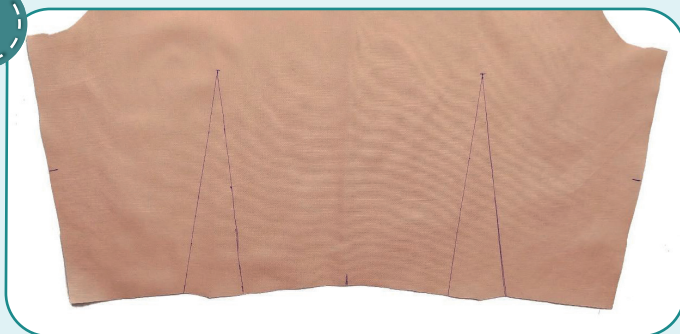
Cut rough the sleeve cuffs, the neck and front lower hem facings, the back neck facing and the back lower hem facing. I.e., expand the seam allowances by about 10-15 mm (3/8 - 9/16"). It should be done because after duplication the piece can get shrunk significantly.

2



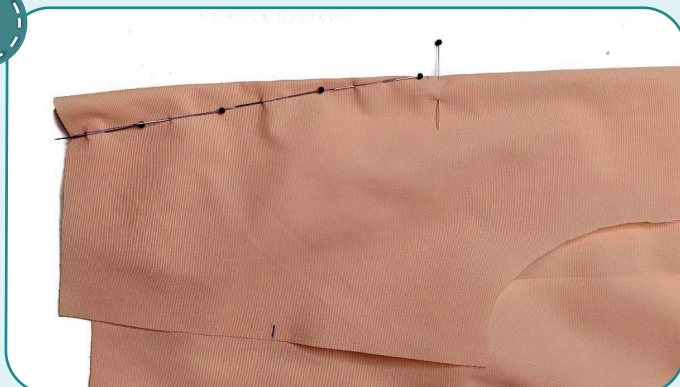
Duplicate the sleeve cuffs, the neck and front lower hem facings, the back neck facing and the back lower hem facing. Cut carefully along the pattern and transfer the marks.

3



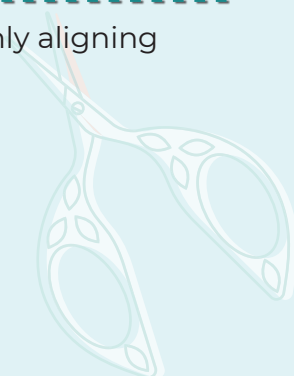
Mark the darts on the back wrong side.

4



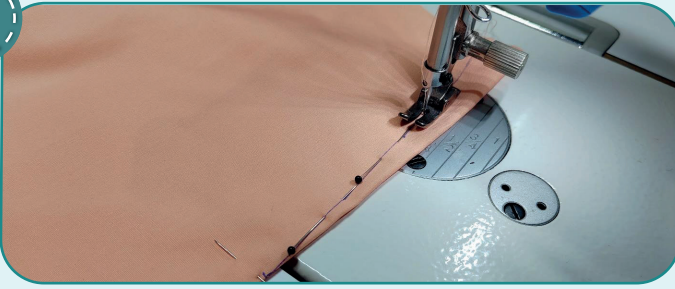
Pin or baste the darts, evenly aligning their sides.

5



BLOUSE CONSTRUCTION

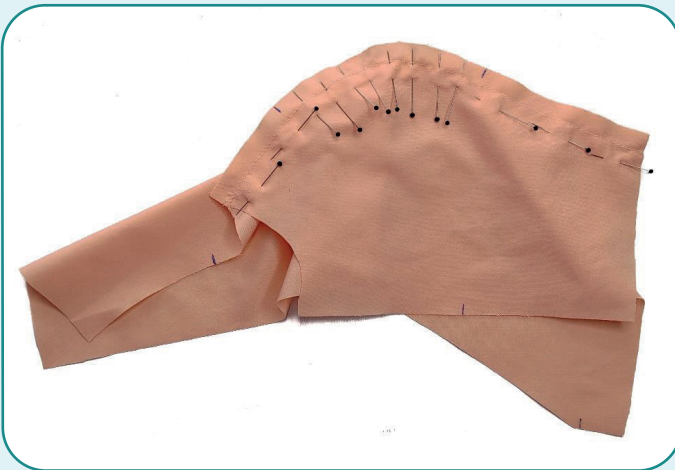
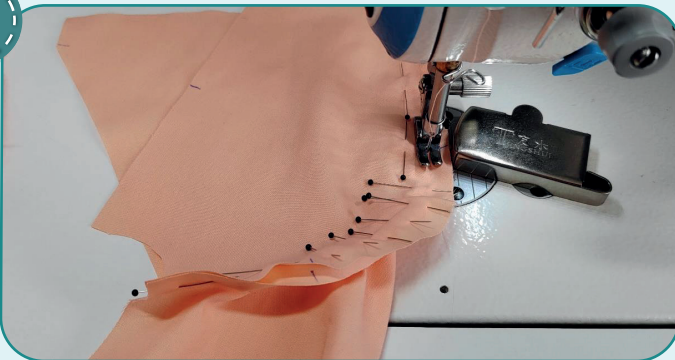
5



2,5-3

Stitch the darts along the marking line. Press the darts towards the center.

6



2,5-3

With right sides together, pin the center front and the side front along the style line, aligning the marks. Stitch the pieces 10 mm (3/8") in from the edge. Stitch from the side front, make sure the creases are not formed.

7



3-4 7

Finish the style line seam allowances with a serger. Press the seam allowances towards the center. Repeat the process for the other sleeve (steps 6-7).

BLOUSE CONSTRUCTION



8



2,5-3

Pin the back and the front along the side and shoulder edges with right sides together. Stitch the pieces 10 mm (3/8") in from the edge.

9



3-4



7

Finish the shoulders and side seams with 3-thread serger stitch. Press the seams towards the front.

10



2,5-3

Fold the strips for the ties in half, lengthways, with right side inside. Stitch the strips 10 mm (3/8") in from the edge. Stitch one tie end and leave the other one raw.

11



Clip the corners, leaving 1 mm (1/16") before the stitching.

12



Turn the ties out to its right side using a special loop turner, a stick, or a pencil.

13



Press the ties.

BLOUSE CONSTRUCTION



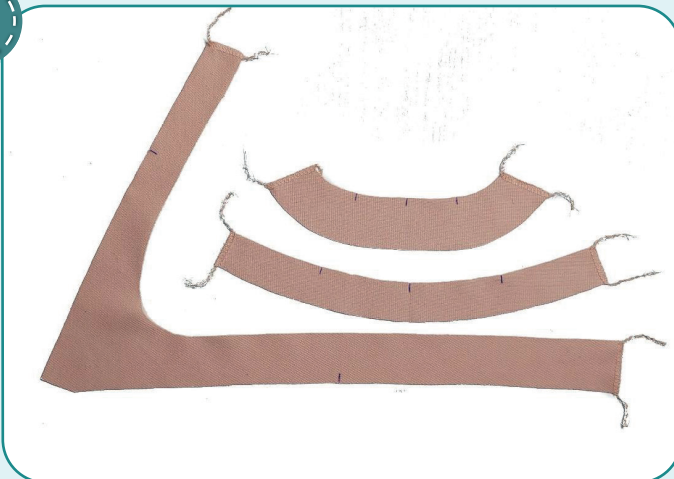
14



2,5-3

Pin the ties raw ends to the front right sides focusing on the marks. Stitch them 7 mm (1/4") in from the edge.

15



3-4



7

Finish the short edges of all facings with a serger. Press them.

16



2-2,5

Pin the neck and front lower hem facings, the back neck facing and the back lower hem facing with right sides together. Stitch them 10 mm (3/8") in from the edge. Press the seams out.

17



3-4



7

Finish the outer facing edges. Press them.

BLOUSE CONSTRUCTION

18



2-2,5

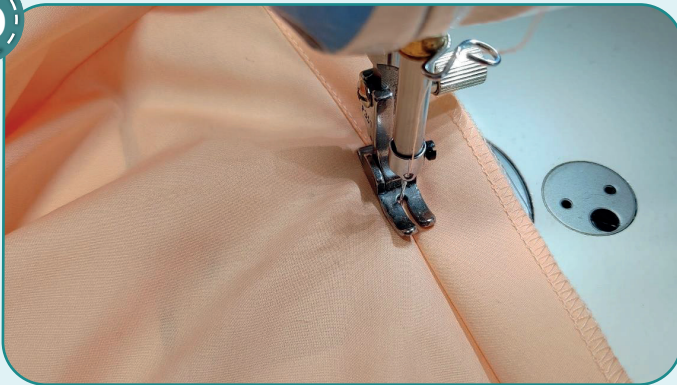
Pin the facings to the garment. Stitch the facings in place 10 mm (3/8") in from the edge.

19



Trim the seam allowances corners. Slash along the curved edges every 15-25 mm (9/16-1"), leaving 1 mm (1/16") before the stitching.

20

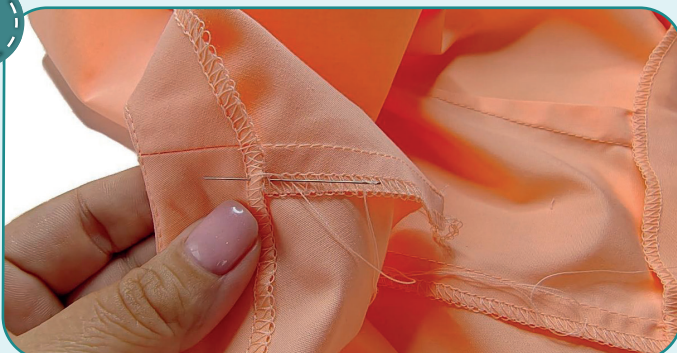


1,5-2

Stitch up the seam allowances onto the facings 1 mm (1/16") away from the attaching seam. Start and finish the stitching as close to the ties as possible. Press the facings forming a roll towards the wrong side.



21



To affix the facings, hand-stitch them to the shoulders, the side seams, the style lines, and the darts.

BLOUSE CONSTRUCTION



22



Transfer the marking for the sleeve split from the paper pattern onto the sleeve right side. Cut the split along the marking.

23

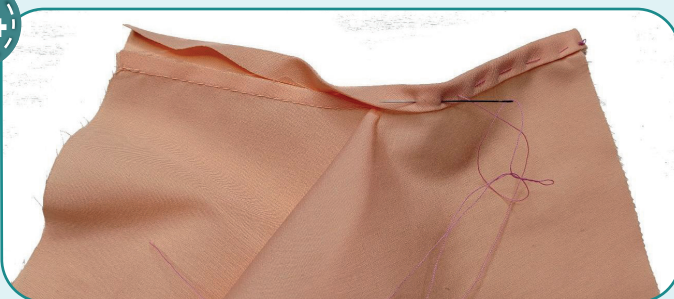


1,5-2

Open the split to make a straight line. Pin the sleeve bias strip to the sleeve split with right sides together. Place the split top 4 mm (1/8") below the sleeve bias strip edge. Stitch the sleeve bias strip in place 5 mm (3/16") away from the edge.

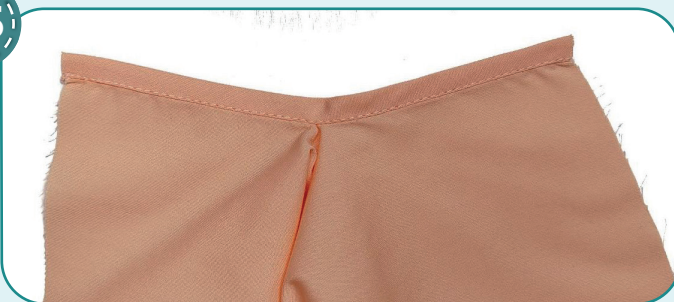
Begin stitching from the sleeve, making sure that no creases are formed. Press the seam allowances towards the bias strip.

24



Wrap the bias strip, edge turned under to the wrong side around the seam allowance. Hand-stitch it so that the bias strip extends above the stitching. Press it.

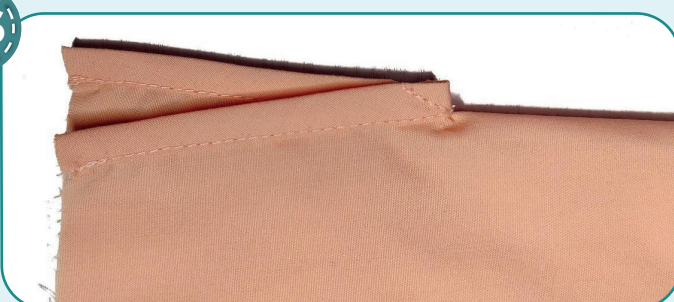
25



2,5-3

Stitch it from the right side 1 mm (1/16") in from the edge. Make sure that the bias strip is stitched evenly on both sides. Remove the basting stitches and press it.

26



2,5-3

Fold the split in half with right side inside and stitch a straight seam across the split top, as a dart.



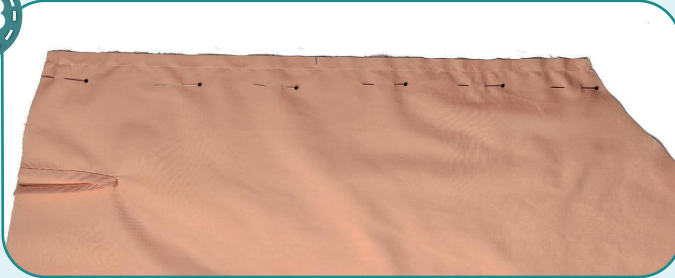
27



Tuck the split bias strip (the one further from the sleeve side edge) inside, press it. Press the under part of the split bias strip. It is the seam allowance for the fastener.



28



Pin the sleeve along the side edges with right side inside. Stitch it 10 mm (3/8") in from the edge.

29



Finish the edges with a 3-thread serger stitch. Press the seam allowances towards the front.

30



Working around the sleeve cap, stitch two seams 6 mm (1/4") and 4 mm (1/8") in from the edge. Set maximum stitch length (4-5 mm), do not secure the seam ends and leave the thread tails at least 5 cm (2").

BLOUSE CONSTRUCTION



31



Pin the sleeve to the armhole, with right sides together. Align the side seams and the marks at the sleeve cap top.

32



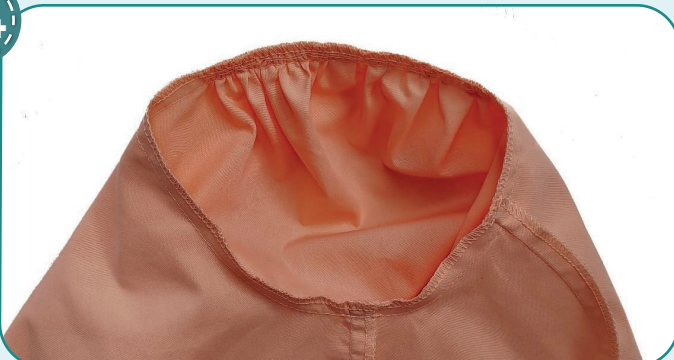
Now we see some excess fabric along the sleeve cap edge. Pull up the gathers to make the sleeve cap fit the armhole, using the thread tails of two rows along the sleeve cap. Tie the thread tails. Evenly spread the gathers along the sleeve cap. Baste along the sleeve cap.

33



Stitch the sleeve into the armhole around the edge 10 mm (3/8") in from the edge. Stitch from the sleeve side, caring the folds formed evenly along the sleeve cap.

34



Finish the seam allowances with a serger. The seam is pressed on the edge.



35



Stitch two parallel rows along the sleeve lower hem 6 and 4 mm (1/4 and 1/8") in from the edge. Set maximum stitch length at 4-5 mm, do not backstitch and leave the thread tails at least 50 mm (2") long at both sides of the seams. Repeat the process for the other sleeve (steps 22-35).

36



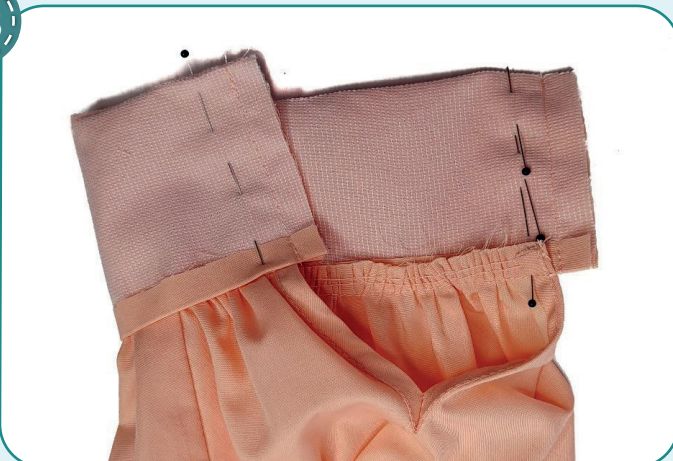
Press the cuff long edge seam allowances at 10 mm (3/8") to the wrong side. Press them in half.

37

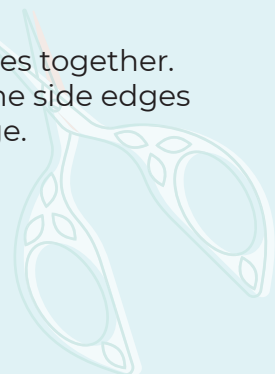


Pull the upper threads of parallel stitches along the sleeve lower hem, to have the edge equal the length indicated on the pattern. Tie the thread tails. Evenly spread the gathers along the sleeve lower hem. Pin the cuff to the sleeve end, with right sides together. Stitch them 10 mm (3/16") away from the edge. Press the seam allowances towards the cuff.

38



Fold the cuff in half, right sides together. Pin the short edges. Stitch the side edges 10 mm (3/8") in from the edge.





39



Trim the seam allowances corners.

40



Turn the cuff out and press it. Place the folded edge over the seam line. Then hand-baste along the fold line.

41



Working on the right side, edgestitch the cuff along the upper edge 1 mm (1/16") away from the cuff attaching seam. Make sure that the inside is also evenly stitched. Remove the basting stitches and press it. Repeat the process for the opposite cuff (steps 36-41).

42



Transfer the marking for the buttonholes from the pattern onto the cuff. Use the buttonholing presser foot to sew buttonholes to the size of the buttons prepared. Carefully cut the buttonholes with the seam ripper but avoid cutting the stitching threads. Press it. Transfer the marking for the buttons from the pattern onto the cuff. Hand-sew the buttons.



43



Remove the basting stitches, trim, and hide the thread tails and press the garment once again. The blouse is ready.



ELINA PATYKOVA
ВЫКРОЙКИ

Overlap Blouse

Thank you for joining my team and me!
Share your works in my groups. Hope you will stay with us for our next project!

