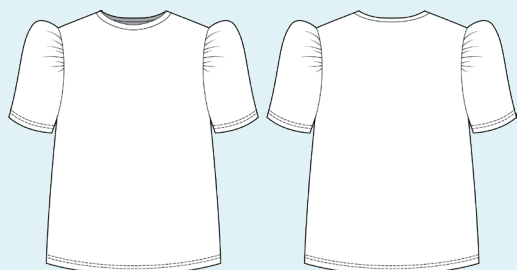


ELINA PATYKOVA
ВЫКРОЙКИ

Instructions
for sewing

Puffed Sleeves Top

#патыкова_фонарик



Skill level



Materials and notions



- cotton lycra jersey
- matching thread
- Jersey 70-80 or Stretch 70-80 needles

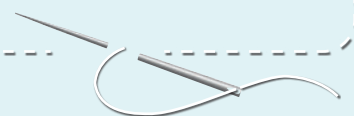
If you are not sure about the fit of the garment, it is recommended to sew a muslin with similar properties (elasticity, thickness, drape) first. This will allow you

to adjust the length, width and fit of the garment and save time.

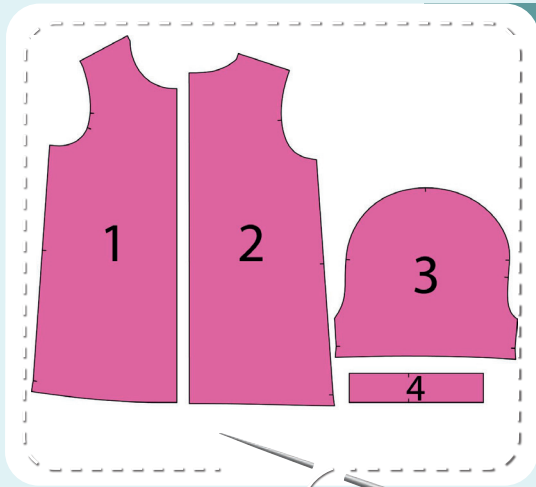


To find out how long a piece of fabric to take, you should place the pattern pieces onto the table, the floor or bedspread, pre-measured width equal to half the width of the selected fabric. Place the pieces, caring the direction of the grain line, their number, i.e., the way you will place them when cutting. Measure the length of the pattern pieces fit, add to this length 5% for the fabric shrinkage - this will be the required amount of fabric for the project. Before beginning your sewing project, wash the fabric in warm

water, dry and iron it.
How to cut: Print and glue all the paper patterns. When printing, do not forget to check the size of the test square. Put the paper pattern pieces onto the fabric. It is important to check that the grain is straight. Pin the paper pattern pieces to the fabric gently and cut the fabric along outline. Note: seam allowances are already included. Transfer all the marks from the pattern onto the wrong side of your fabric.



Cutting layout



TOP PIECES:

1. front – cut 1 on the fold
2. back – cut 1 on the fold
3. sleeve – cut 2
4. neckband – cut 1 on the fold

Construction

Symbols



straight stitch



the stitch length in (mm)



flat lock stitch



zigzag stitch



the stitch width in (mm)



3-Step Zigzag Seam Finishing



unilateral zipper presser foot



universal presser foot



invisible zipper presser foot



pinning

You should lockstitch the seam and trim the thread tails or tie the seam thread tails and hide them into the seam after sewing a serger stitch or cover seaming chain stitch.



double welting (piping) presser foot



3-thread serger stitch



4-thread serger stitch

NOTE

A

4-thread serger stitch

If you do not have a serger, you can use stretch stitches available on your sewing machine, or at least, a zigzag stitch.

B

3-thread serger stitch

If you do not have a serger, you can replace it with an overedge stitch, or a zigzag stitch.

C

flat lock stitch

If you do not have a coverstitch machine, the flat seam can be performed with a) a twin needle on a sewing machine, b) decorative stretch seam on a sewing machine, c) finish the seams with serger and stitch them with a straight stitch.



Top construction



1



4

2,5-3,5

7

With right sides together, pin the front and the back along the shoulder edges. Serge them. Press the seam allowances flat towards the front.

2



4

2,5-3,5

7

Pin the back and the front along the side edges with right sides together. Serge the pieces. Press the seam allowances flat towards the front.

3



1

4-5

4-5

Stitch two parallel seams along the sleeve cap 5 mm (3/16") and 3 mm (1/8") in from the edge. Stitch between the marks (both marks are the closest to the shoulder top point mark). Set maximum stitch length at 4-5 mm, do not backstitch and leave the thread tails at least 50 mm (2") long at both sides of the seams.

4



4

2,5-3,5

7

Pin the sleeve along the side edges with right side inside. Serge it. Press the seam allowances flat towards the back.

5



TOP CONSTRUCTION

5



Pin the sleeve into the armhole with right sides together. Align the side seams and the marks. Pull up the gathers to make the sleeve cap fit the armhole, using the upper thread tails of two rows (previously made) along the sleeve cap. Tie the thread tails. Evenly spread the gathers along the entire sleeve cap. Pin or baste along the sleeve cap.

6



4針

2,5-3,5

7

Serge it in place. Serge from the sleeve side. Press the seam allowances on the edge. Repeat the process for the other sleeve (steps 3-6).

NOTE: it is recommended to try it on, check the fit, length and ease. When fitting, consider the folded lower hem width and the sleeves lower hem width.

7



4針

2,5-3,5

7

Serge the neckband short edges, having pinned the side edge beforehand.

8



9



Fold the neckband in half, lengthwise, wrong side inside, and press it. While pressing, shape the neckband with an iron, gently stretching the raw edges and ironing the fold. You can pin the neckband at the marks beforehand.

TOP CONSTRUCTION



10



Measure the back neckline. Cut a strip of the main fabric 35 mm (1 3/8") wide and 20 mm (13/16") longer than the back neckline. Fold the strip in half, lengthways, and press the ends 10 mm (3/8") inside.

11



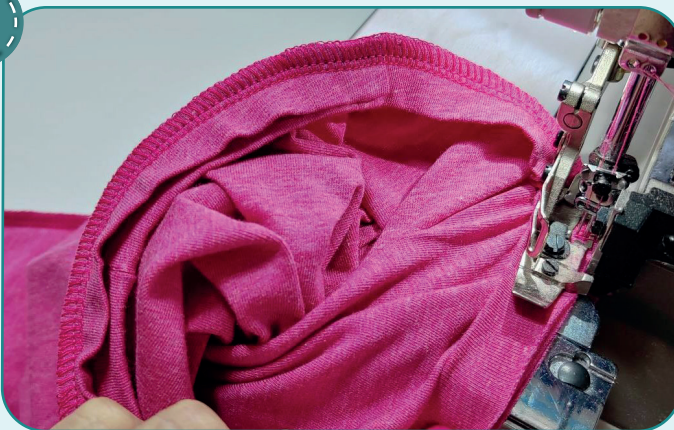
Pin the neckband to the garment neckline right side. Align the neckband seam with the back neckline center and align the neckband center with front neckline center; the rest marks are aligned with the shoulder seams.

12



Pin the strip along the back neckband wrong side aligning the edges. Place the strip between the shoulder seams with right side to the neckline. The neckband should be between the garment neckline and the strip.

13

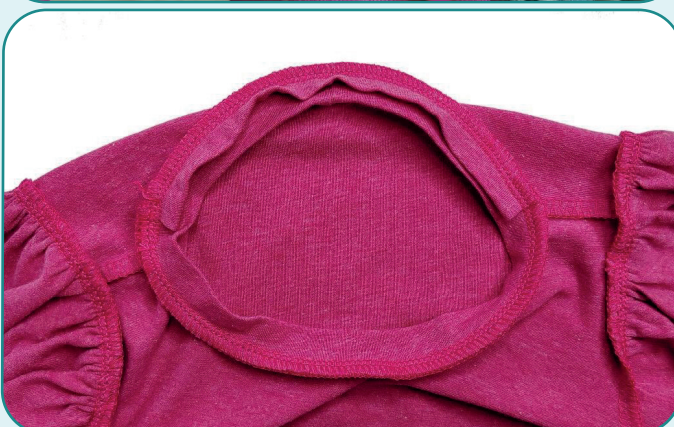


4

2,5-3,5

7

Serge the strip and the neckband to the garment. While serging, evenly stretch the neckband but avoid stretching the neckline and the strip. Press the seams downwards.





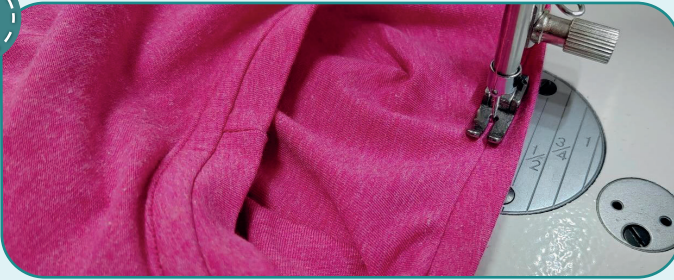
14



2,5-3

Pin or hand-baste the strip raw edge to the back, overlapping the serged seam. Stitch the strip to the back 1 mm (1/16") in from the edge.

15



2,5-3

Topstitch the front neckline between the shoulder seams 1 mm (1/16") away from the neckband attaching seam. Press the seams.



16



2,5-3



5,6

Fold the garment lower hem and the sleeve lower hems to the wrong side at 15 mm (9/16") and press them. You can hand-baste the lower hems. Coverstitch the lower hems. Tie the thread tails on the wrong side and hide them into the seam. Press the lower hems.

17



Remove the basting stitches, trim the thread tails and hide them into the seam. The Top is ready.



ELINA PATYKOVA
ВЫКРОЙКИ

Puffed Sleeves Top

Thank you for joining my
team and me!
Share your works in my
groups. Hope you will stay
with us for our next project!

