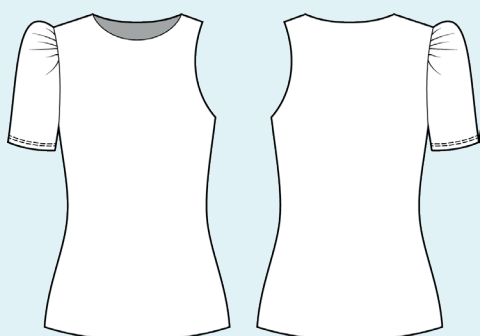


ELINA PATYKOVA  
ВЫКРОЙКИ

Instructions  
for sewing

## Top Kim

#патыкова\_топ\_ким



Skill level



# Materials and notions



- cotton lycra jersey
- matching thread
- Jersey 70-80 or Stretch 70-80 needles

If you are not sure about the fit of the garment, it is recommended to sew a muslin with similar properties (elasticity, thickness, drape) first. This will allow you

to adjust the length, width and fit of the garment and save time.

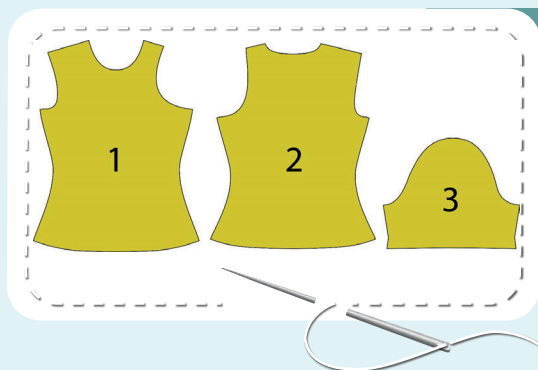


To find out how long a piece of fabric to take, you should place the pattern pieces onto the table, the floor or bedspread, pre-measured width equal to half the width of the selected fabric. Place the pieces, caring the direction of the grain line, their number, i.e., the way you will place them when cutting. Measure the length of the pattern pieces fit, add to this length 5% for the fabric shrinkage - this will be the required amount of fabric for the project. Before beginning your sewing project, wash the

fabric in warm water, dry and iron it. How to cut: Print and glue all the paper patterns. When printing, do not forget to check the size of the test square. Put the paper pattern pieces onto the fabric. It is important to check that the grain is straight. Pin the paper pattern pieces to the fabric gently and cut the fabric along outline. Note: seam allowances are already included. Transfer all the necessary marks from the pattern onto the wrong side of your fabric.



# Cutting layout



## TOP PIECES

1. front - cut 2
2. back - cut 2
3. sleeve - cut 1

Construction

# Symbols



straight stitch



the stitch length in (mm)



flat lock stitch



zigzag stitch



the stitch width in (mm)



3-Step Zigzag Seam Finishing



unilateral zipper presser foot



universal presser foot



invisible zipper presser foot



pinning

You should lockstitch the seam and trim the thread tails or tie the seam thread tails and hide them into the seam after sewing a serger stitch or cover seaming chain stitch.



double welting (piping) presser foot



3-thread serger stitch



4-thread serger stitch

## NOTE

A

### 4-thread serger stitch

If you do not have a serger, you can use stretch stitches available on your sewing machine, or at least, a zigzag stitch.

B

### 3-thread serger stitch

If you do not have a serger, you can replace it with an overedge stitch, or a zigzag stitch.

C

### flat lock stitch

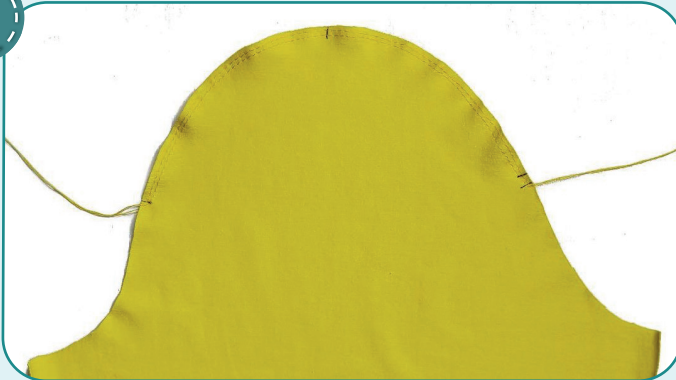
If you do not have a coverstitch machine, the flat seam can be performed with a) a twin needle on a sewing machine, b) decorative stretch seam on a sewing machine, c) finish the seams with serger and stitch them with a straight stitch.



# Top construction

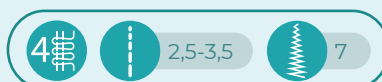


1



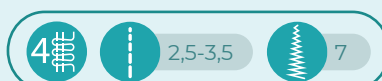
Stitch two parallel seams along the sleeve cap 5 mm (3/16") and 3 mm (1/8") in from the edge. Stitch between the marks. Set maximum stitch length (4-5 mm), do not secure the seam ends and leave the thread tails at least 50 mm (2").

2



With right sides together, pin the front and the back along the short shoulder edges. Serge them. Press the seam allowances flat towards the front. Stitch the lining short shoulder edge in the same way. Press the seam allowances flat towards the back.

3



Place the top and the top lining pieces with right sides together. Serge them along the neckline and the left armhole.

4



Turn the neckline and the armhole out and press them.



5



5



2,5-3,5



7

With right sides together, pin the back with the front and the back lining with the front lining along the left side seam aligning the check marks. Note: the section of the edge between the marks on the side seam upper part is longer than the same section on the back.

The front edge is slightly shaped when sewing, i.e. the corresponding parts are gathered to have equal length. The part of the edge between the marks on the front waistline is also longer than the same part on the back. While stitching, stretch the part of the back waistline edge. Serge the pieces. To avoid bulk, place the armscye seam allowances in different directions.

6



Press the garment side seam allowances towards the front and press the lining seam allowances towards the back.

7



2,5-3,5



7

Turn the garment out to the wrong side, then pin it and its lining along the lower edges. Serge the pieces. Turn the garment out to the right side and press its lower hem.

8



2,5-3,5



7

With right sides together, pin the back with the front and the back lining with the front lining along the right side seam aligning the check marks. The front edge is slightly shaped when sewing, i.e. the corresponding parts are gathered to have equal length and the part of the back edge at the waist is slightly stretched. Serge the pieces.

## TOP CONSTRUCTION



9



Press the garment side seam allowances towards the front and press the lining seam allowances towards the back.

10



4



2,5-3,5



7

Pin the garment and the lining along the right shoulder edge with right sides together. Serge them. To avoid bulk, place the neckline seam allowances in different directions.

11



Press the shoulder seam allowances towards the front and press the lining seam allowances towards the back.

12



4



2,5-3,5



7

Pin the sleeve along the side edges with right side inside. Serge it. Press the seam allowances flat towards the back.

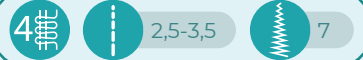


13



Place the sleeve into the armhole with right sides together; align the edges of the garment and the lining. Align the side seams and the marks. Pull up the upper threads of the two parallel seams to make the gathers on the sleeve cap fit the armhole. Tie the thread tails. Evenly spread the gathers along its entire length. Pin or baste along the sleeve cap.

14



Serge the sleeve in place. Serge from the sleeve side. Press the seam allowances on the edge.

15



Fold the sleeve lower hem 30 mm (1 3/16") to the wrong side and press it. You can hand-baste the sleeve lower hem. Coverstitch it. Tie the thread tails on the wrong side and hide them into the seam. Press it.

16



Remove the basting stitches, trim the thread tails and hide them into the seam. The top is ready.





ELINA PATYKOVA  
ВЫКРОЙКИ

## Top Kim

Thank you for joining my team and me!  
Share your works in my groups. Hope you will stay with us for our next project!

