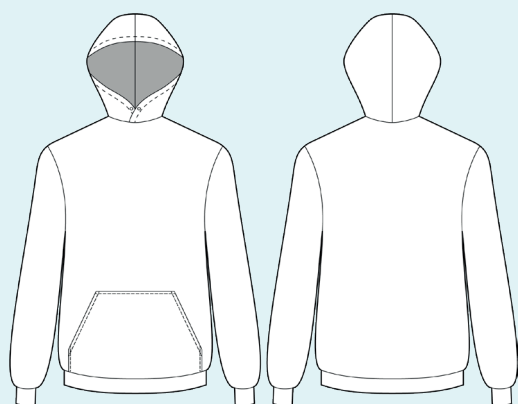


ELINA PATYKOVA
ВЫКРОЙКИ

Instructions
for sewing

Hoodie Gang

#патыкова_gang



Skill level



Materials and notions



- sweatshirt loop back fabric
- cotton lycra jersey
- rib knit fabric
- fusible interfacing
- eyelets 8 mm (5/16") - 2 pcs
- cord 120 cm (47 1/4") long
- matching thread
- Jersey 90 or Stretch 90 needles

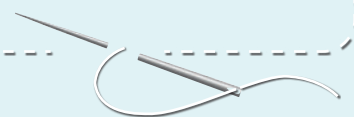
If you are not sure about the fit of the garment, it is recommended to sew a muslin with similar properties (elasticity, thickness, drape) first. This will allow you

to adjust the length, width and fit of the garment and save time.

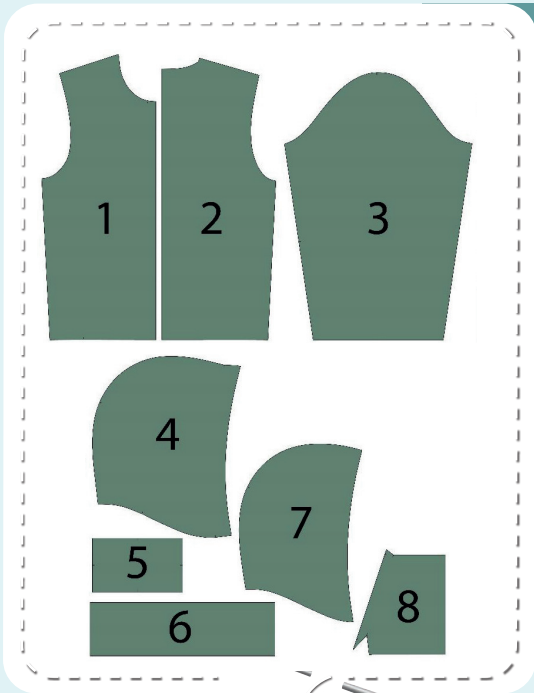


To find out how long a piece of fabric to take, you should place the pattern pieces onto the table, the floor or bedspread, pre-measured width equal to half the width of the selected fabric. Place the pieces, caring the direction of the grain line, their number, i.e., the way you will place them when cutting. Measure the length of the pattern pieces fit, add to this length 5% for the fabric shrinkage - this will be the required amount of fabric for the project. Before beginning your sewing project, wash the fabric in warm

water, dry and iron it. Cutting layout: Print and glue all the paper patterns. When printing, do not forget to check the size of the test square. Put the paper pattern pieces onto the fabric. It is important to check that the grain is straight. Pin the paper pattern pieces to the fabric gently and cut the fabric along the outline. Note: seam allowances are already included. Transfer all the marks from the pattern onto the wrong side of your fabric.

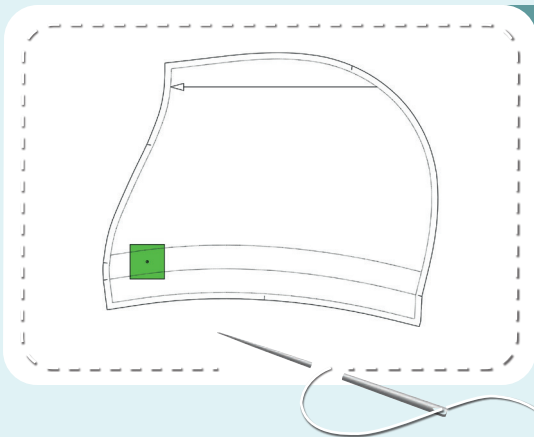


Cutting layout



HOODIE PIECES

1. front - cut 1 on the fold (sweatshirt loop back fabric)
2. back - cut 1 on the fold (sweatshirt loop back fabric)
3. sleeve - cut 2 (sweatshirt loop back fabric)
4. hood - cut 2 (sweatshirt loop back fabric)
5. sleeve cuff - cut 2 (rib knit fabric)
6. hem band - cut 1 on the fold (rib knit fabric)
7. hood lining - cut 2 (cotton lycra jersey)
8. kangaroo pocket - cut 1 on the fold (sweatshirt loop back fabric)



PIECES TO INTERFACE:

- Green - fusible interfacing
- places for the eyelets

Construction

Symbols



straight stitch



the stitch length in (mm)



flat lock stitch



zigzag stitch



the stitch width in (mm)



3-Step Zigzag Seam Finishing



unilateral zipper presser foot



universal presser foot



invisible zipper presser foot



pinning

You should lockstitch the seam and trim the thread tails or tie the seam thread tails and hide them into the seam after sewing a serger stitch or cover seaming chain stitch.



double welting (piping) presser foot



3-thread serger stitch



4-thread serger stitch

NOTE

A

4-thread serger stitch

If you do not have a serger, you can use stretch stitches available on your sewing machine, or at least, a zigzag stitch.

B

3-thread serger stitch

If you do not have a serger, you can replace it with an overedge stitch, or a zigzag stitch.

C

flat lock stitch

If you do not have a coverstitch machine, the flat seam can be performed with a) a twin needle on a sewing machine, b) decorative stretch seam on a sewing machine, c) finish the seams with serger and stitch them with a straight stitch.



Hoodie construction



1



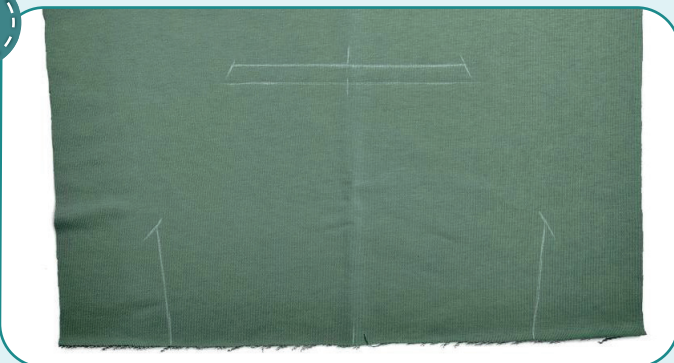
Duplicate the places for the eyelets.

2



Press the pocket openings at 20 mm (13/16"). Coverstitch them. Tie the thread tails on the wrong side and hide them into the seam. Press the fold.

3



Transfer the marking for the pocket from the pattern onto the front right side. Draw a line 10 mm (3/8") below the top pocket edge line.

4



Turn the pocket upside down, align the pocket top edge with the bottom line and pin it right side to the front. Transfer the marking line 10 mm (3/8") away from the pocket top edge. Attach the pocket along the marking. Press the pocket down.

5

HOODIE CONSTRUCTION



5



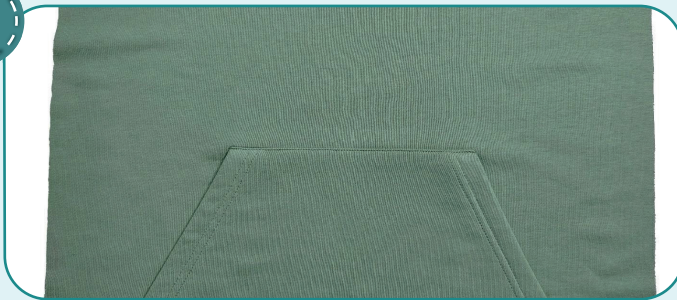
Tuck the pocket side edges 10 mm (3/8") to the wrong side. To affix the pocket, pin it aligning the side edges with the marking. Align the lower edges of the front and the pocket.

6



Edgestitch the pocket side edges 1 mm (1/16") in from the edge. Stitch the lower edge 4 mm (1/8") in from the edge. Press the pocket.

7



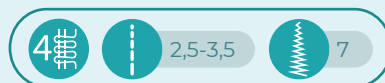
Edgestitch the pocket along the top edge 1 mm (1/16") away from the stitching line.

8



Pin the hood pieces with right sides together aligning the marks. Serge them. Press the seam allowances towards the right hood piece. Repeat the process for the hood lining.

9



Place the hood lining into the hood, right sides together, and pin them along the outer edge. Serge them. Press the seam allowances towards the hood lining.

HOODIE CONSTRUCTION



10



Punch 3,5 mm (1/8") holes for the eyelets with a Hole Punch or scissors. Attach the eyelets with a press.

11



Tuck the hood edge inside and press along the marking, transferred from the pattern. There should be equal distance 30 mm (1 3/16") between the fold and the hood lining. Working from the inner hood side, stitch a seam 30 mm (1 3/16") away from the fold. The needle should get exactly atop the lining attaching seam. Press it.



12



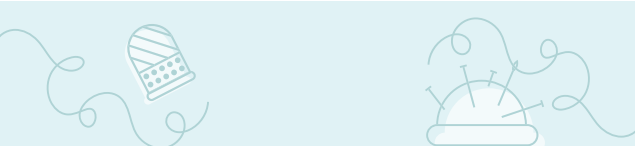
Lay out the hood and the lining. Overlap the left end of the hood over the right end, focusing on the marks. Pin them. To affix the hood ends and the lining, stitch them 3-4 mm (1/8") in from the edge. The edge of the lining may protrude slightly.

13



Even the edges, i.e., trim the hood lining protruding edge.





14



4 2,5-3,5 7

Pin the front and the back along the shoulder edges with right sides together. Serge them. Press the seam allowances flat towards the front.

15



Cut a strip of cotton lycra jersey 35 mm (1 3/8") wide and the length equal the neckline length plus 20 mm (13/16").

16



Press one strip end 10 mm (3/8") to the wrong side. Press the strip in half, lengthways, wrong side inside.

17



Insert the hood into the garment with right sides together and pin them along the neckline.

18



Place a strip of cotton lycra jersey to the hood lining with right sides together, aligning the edges. Place the strip free edge atop the tucked one. If you lack experience, it is better to hand-baste the hood and the strip.



19



4 2,5-3,5 7

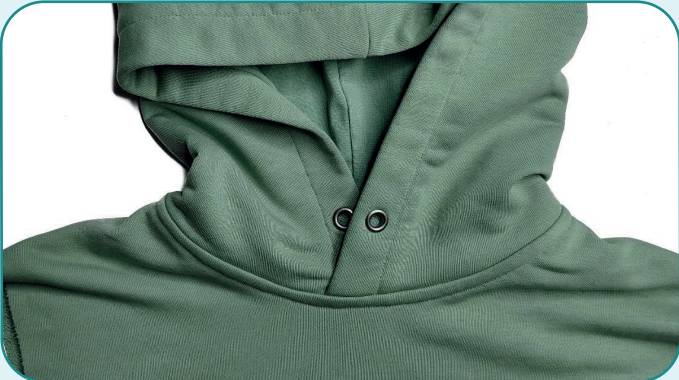
Serge the hood and the strip to the neckline. Press the seam allowances and the strip down.

20



2,5-3

Overlap the serged seam with the strip free edge and hand-baste it to the front and the back. Press it. Topstitch the strip along the neckline 8 mm (5/16") away from the attaching seam. Focus on the hood attaching seam, to have even stitching on the right side. Press it.



21



4 2,5-3,5 7

With right sides together, pin the sleeve into the armhole, aligning all the marks. Serge it in place. Press the seam allowance towards the front and the back. Repeat the process for the other sleeve.



22



4

2,5-3,5

7

Pin the back and the front along the side seam with right side inside. Pin the sleeve along the side edges. Serge them. To avoid bulk, place the sleeve attaching seam allowances in different directions. Repeat the process for the opposite side seam.

NOTE: it is recommended to try it on, check the fit, length and ease. When fitting, consider the cuffs and the hem band length.

23



4

2,5-3,5

7

With right sides together, fold the cuffs in halves lengthways, and pin along the short edges. Serge them.

24



To avoid bulk when stitching the cuffs, press the seam allowances in different directions.

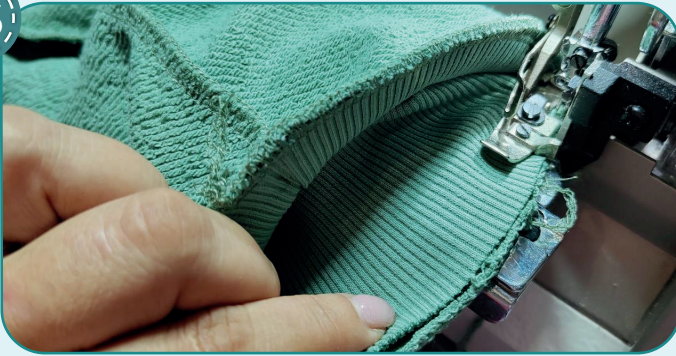
25



Fold the cuffs in half, wrong side inside, and press them.



26



4

2,5-3,5

7

Aligning the cuff and the sleeve seams, serge the cuff to the sleeve. While serging, evenly stretch the cuff, but avoid stretching the sleeve opening. Repeat the process for the other cuff. Press the seams towards the sleeves.



27



4

2,5-3,5

7

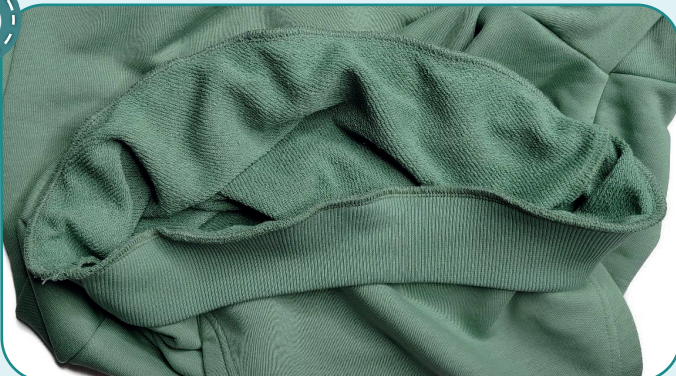
With right sides together, fold the hem band in half, lengthways, and pin along the short edges. Serge it.

28



Press the seam allowances ends in different directions. With wrong sides together, fold the hem band in half, lengthways, and press it.

29

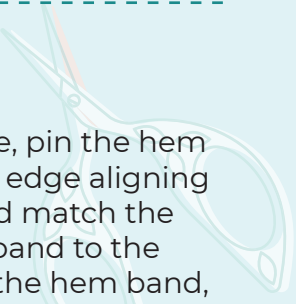


4

2,5-3,5

7

Working from the right side, pin the hem band to the garment lower edge aligning the marks. The seam should match the side seam. Serge the hem band to the garment. When attaching the hem band, evenly stretch it, but avoid stretching the garment lower edge. Press the seam allowances upwards.





30



Thread the cord, remove the basting stitches, trim and hide the thread tails, and press the garment once again. The hoodie is ready.



ELINA PATYKOVA
ВЫКРОЙКИ

Hoodie Gang

Thank you for joining my team and me!
Share your works in my groups. Hope you will stay with us for our next project!

