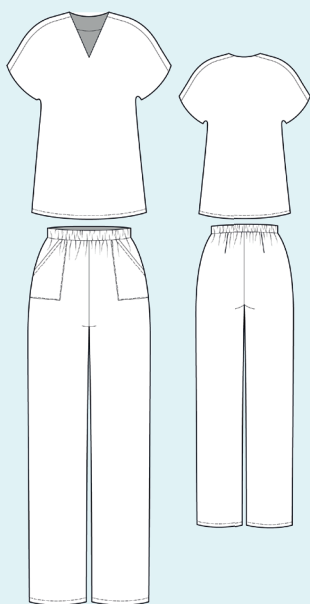


ELINA PATYKOVA  
ВЫКРОЙКИ

Instructions  
for sewing

## Loose Suit

#патыкова\_костюмсвобода



Skill level



# Materials and notions



- muslin
- fusible interfacing with a density of 45-50 g/m<sup>2</sup>
- elastic 50 mm (2") wide
- matching thread
- Universal 80 needles

If you are not sure about the fit of the garment, it is recommended to sew a muslin with similar properties (elasticity, thickness, drape) first. This will allow you

to adjust the length, width and fit of the garment and save time.

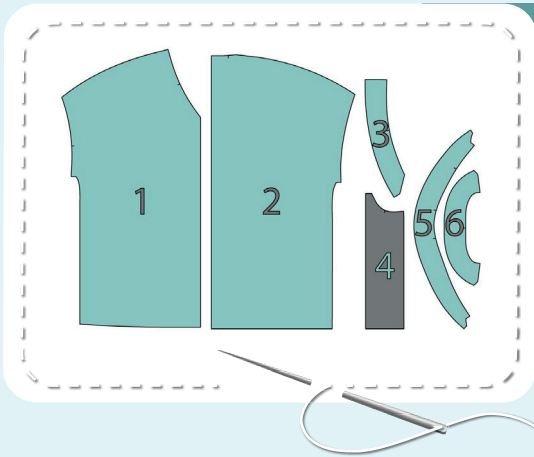


To find out how long a piece of fabric to take, you should place the pattern pieces onto the table, the floor or bedspread, pre-measured width equal to half the width of the selected fabric. Place the pieces, caring the direction of the grain line, their number, i.e., the way you will place them when cutting. Measure the length of the pattern pieces fit, add to this length 5% for the fabric shrinkage - this will be the required amount of fabric for the project. Before beginning your sewing project, wash

the fabric in warm water, dry and iron it. Cutting layout: Print and glue the paper patterns. When printing, do not forget to check the size of the test square. Put the paper pattern pieces onto the fabric. It is important to check that the grain is straight. Pin the paper pattern pieces to the fabric gently and cut the fabric along outline. Note: seam allowances are already included. Transfer all the marks from the pattern onto the wrong side of your fabric.

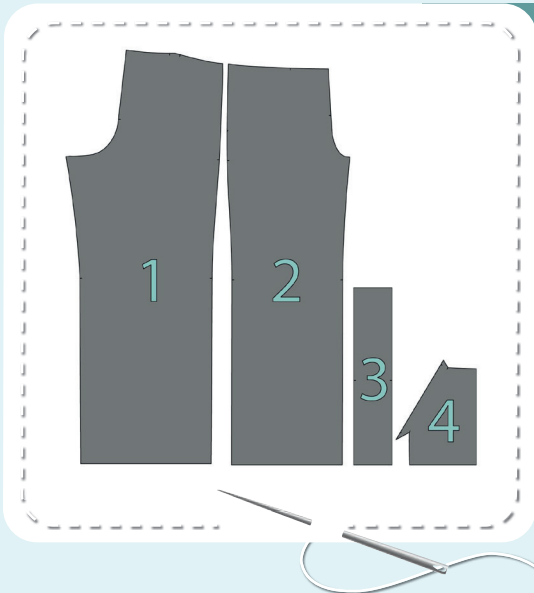


# Cutting layout



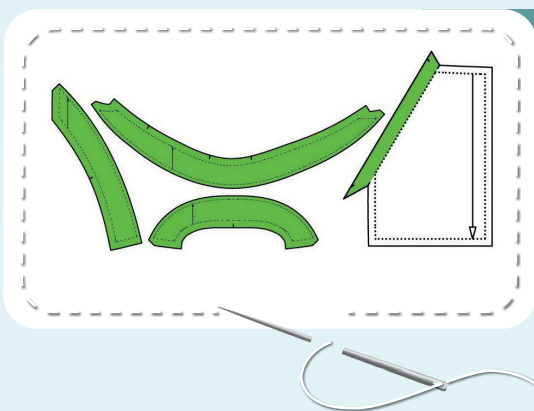
## TOP PIECES (MUSLIN):

1. front - cut 1 on the fold
2. back - cut 1 on the fold
3. front neck facing - cut 2 (cut rough)
4. shoulder stripe - cut 2
5. armhole facing - cut 2 (cut rough)
6. back neck facing - cut 1 (cut rough)



## PANTS PIECES:

1. back - cut 2
2. front - cut 2
3. waistband - cut 1 on the fold
4. patch pocket - cut 2



## PIECES TO INTERFACE:

- Green - fusible interfacing
  - front neck facings, back neck facing and armhole facings
  - pocket opening seam allowance

## Construction

# Symbols



straight stitch



the stitch length in (mm)



flat lock stitch



zigzag stitch



the stitch width in (mm)



3-Step Zigzag Seam Finishing



unilateral zipper presser foot



universal presser foot



invisible zipper presser foot



pinning

You should lockstitch the seam and trim the thread tails or tie the seam thread tails and hide them into the seam after sewing a serger stitch or cover seaming chain stitch.



double welting (piping) presser foot



3-thread serger stitch



4-thread serger stitch

## NOTE

A

### 4-thread serger stitch

If you do not have a serger, you can use stretch stitches available on your sewing machine, or at least, a zigzag stitch.

B

### 3-thread serger stitch

If you do not have a serger, you can replace it with an overedge stitch, or a zigzag stitch.

C

### flat lock stitch

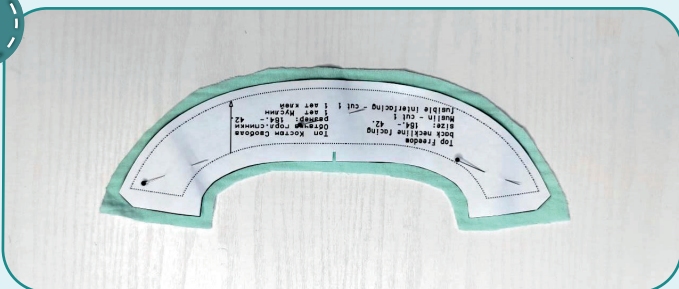
If you do not have a coverstitch machine, the flat seam can be performed with a) a twin needle on a sewing machine, b) decorative stretch seam on a sewing machine, c) finish the seams with serger and stitch them with a straight stitch.



# Top construction

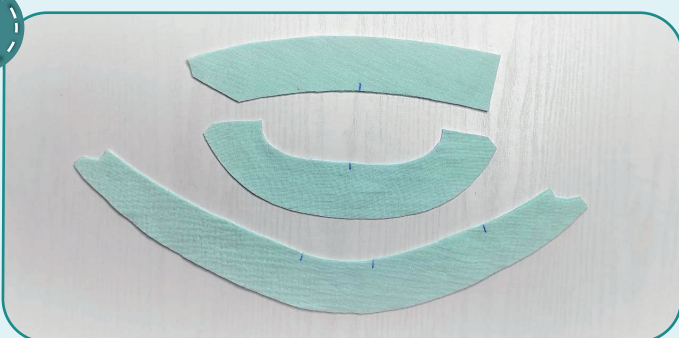


1



Front neck facings, back neck facing and armhole facings are cut rough. It means, we expand the allowance by about 10-15 mm (3/8 - 9/16"). The piece can shrink significantly after duplication. Duplicate the pieces.

2



Cut the front neck facings, back neck facing and the armhole facings exactly along the paper patterns and transfer the marks.

3



Pin the shoulder stripe to the back with right sides together. Stitch the pieces 10 mm (3/8") in from the edge.

**NOTE.** If you lack experience, it is better to hand-baste the seams beforehand.

4



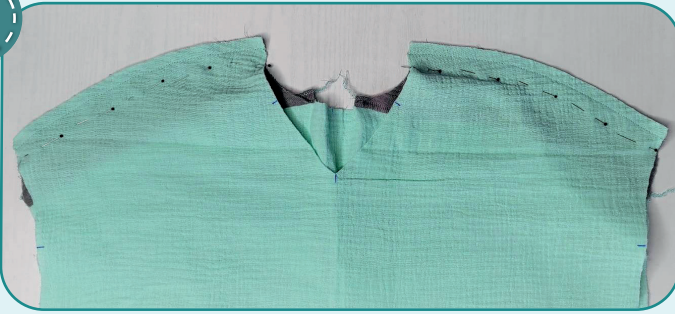
Finish the edges with the serger. Press the seam allowances towards the shoulder stripe.

5

## TOP CONSTRUCTION



5



2,5-3

Stitch the front to the shoulder stripe with right sides together.

6



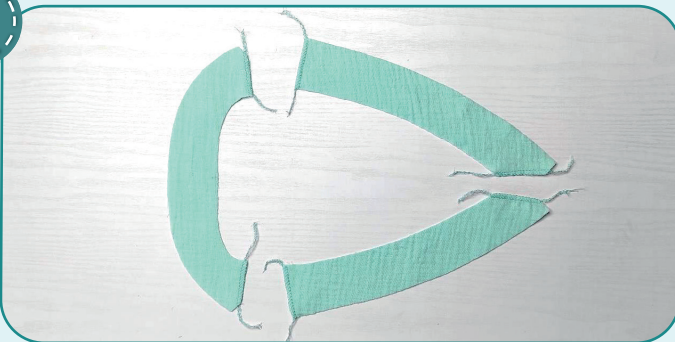
3-4



7

Finish the edges with the serger. Press the seam allowances towards the shoulder stripe.

7



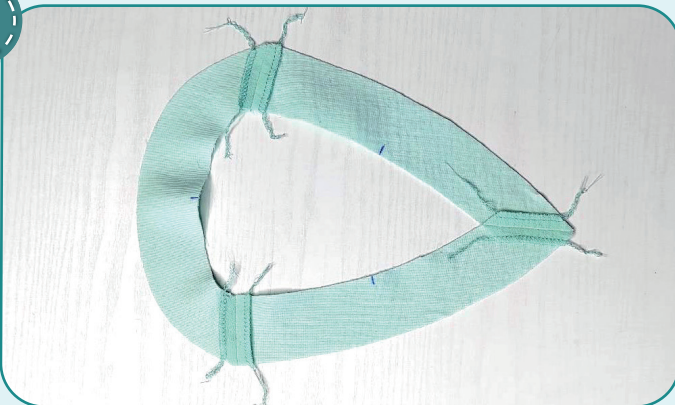
3-4



7

Finish the shoulder and central edges of the front neck facings and the back neck facing with the serger. Press the seams.

8



2,5-3

With right sides together, stitch the front and back neck facings shoulder and central edges 10 mm (3/8") in from the edge. Press the seam allowances open.

9



3-4



7

Finish the neck facing outer edge and the armhole facings outer edges with the serger. Press them.

10



2,5-3

With right sides together, pin the neck facing to the garment neckline aligning the center and shoulder edges. Stitch them 10 mm (3/8") in from the edge. Repeat the process for the armhole facings.

11



Slash the seam allowances every 15 mm (9/16") leaving 1 mm (1/16") before the stitching.

12

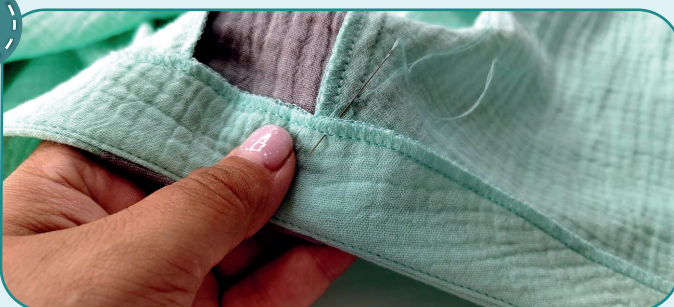


2,5-3

Sew up the seam allowances onto the neck facing 1 mm (1/16") away from the seam. Repeat the process for the armhole facings. Press out the neck facing and the armhole facings to the wrong side forming a roll.



13



Hand-baste the neck facing and the armhole facings to the shoulder stripes to affix them.



**NOTE.** You can edgestitch all the facings along the finishing stitching.

14



With right sides together, pin the front and the back along the side edges and together with the armhole facings. Stitch them 10 mm (3/8") in from the edge.

15



Finish the garment side edges with a 3-thread serger stitch. Press the seam allowances towards the front. Hide the thread tails into the seam using a needle with a big eye.

16



To affix the seam allowance along the armhole facing, stitch along the side seam 5 mm (3/16") away from it. Press the seams.

17



Press the garment lower hem to the wrong side first by 10 mm (3/8") and then by 15 mm (9/16"). You can hand-baste the lower hem.

18



Topstitch the lower hem 14 mm (9/16") away from the edge. Press it.





19



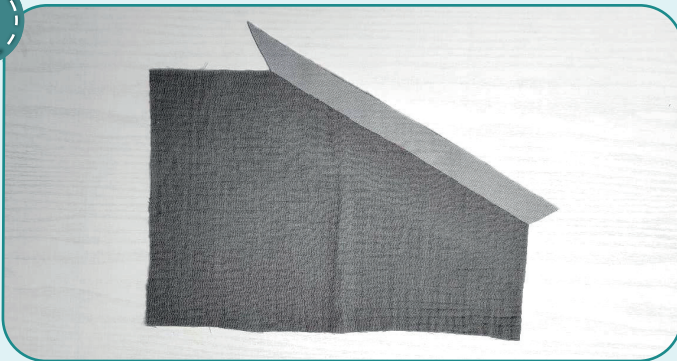
Remove the basting stitches, trim, and hide the thread tails and press the garment once again. The top is ready!



# Pants construction

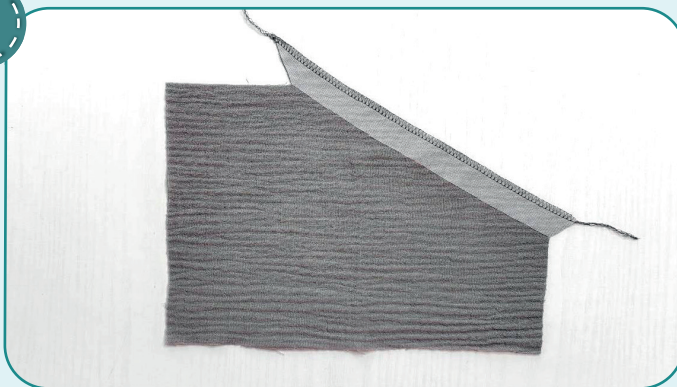


1



Duplicate the pocket opening seam allowance.

2



3  3-4  7

Finish with the serger the seam allowance along the pocket opening.

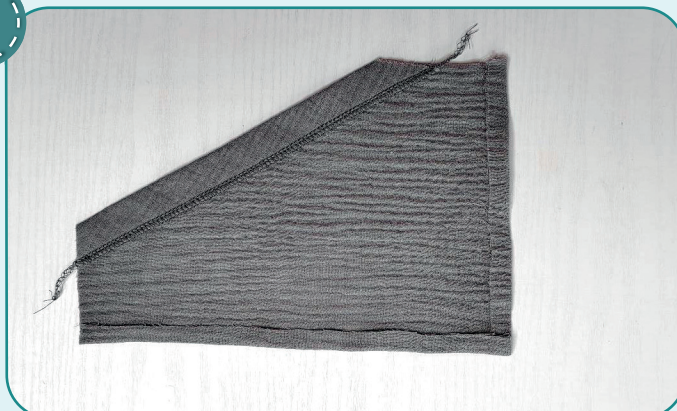
3



    2-2,5

Press the seam allowance along the pocket opening at 20 mm (13/16") to the wrong side. Topstitch it 15 mm (9/16") in from the edge.

4

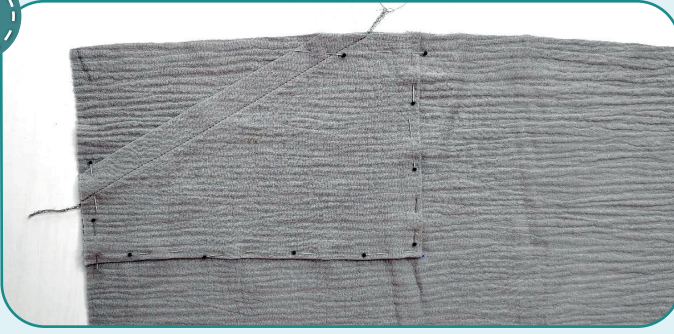


Press the lower and side seam allowances to the wrong side at 10 mm (3/8").



## PANTS CONSTRUCTION

5



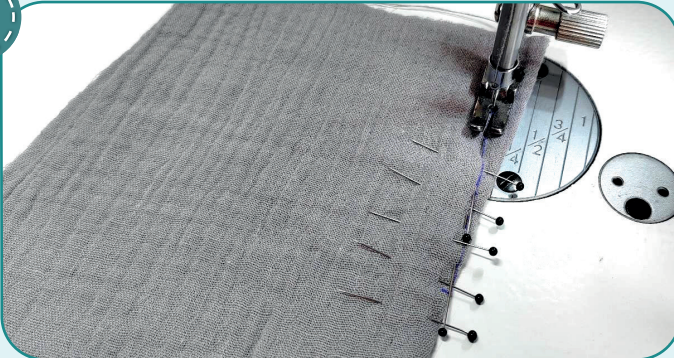
Transfer the marking for the patch pocket onto the pants front panel right side. Affix the pocket, faced up, along the marking (with pins, basting stitching, or a glue stick).

6



Edgestitch the pocket 1 mm (1/16") away from the edge and at the same time secure its edges above and below the pocket opening, 5 mm (3/16") away from the edge. Backstitch at the seam ends. Press the pocket. Repeat the process for the opposite pocket (steps 1-6).

7



Transfer the darts from the paper pattern onto the back wrong sides. Pin the darts carefully aligning its sides. Stitch the darts along the marking line. Press the darts towards the center.



8



Pin the front and the back along the side edges and inseams. Stitch them 10 mm (3/8") in from the edge.



9



Finish the pant leg inseams and side seams with the serger. Press the inseam allowances towards the front and the side seam allowances towards the back.

10



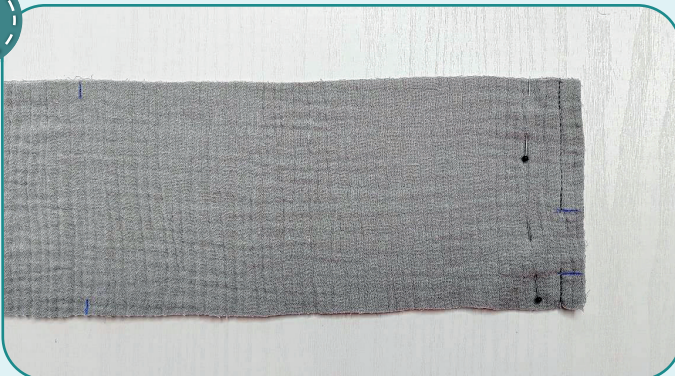
Insert the left pant leg into the right one with right sides together. Pin the crotch seam aligning the marks and the inseams. Stitch them 10 mm (3/8") in from the edge.

11



Finish the seam allowances with the serger. Press the seam allowances towards the right.

12

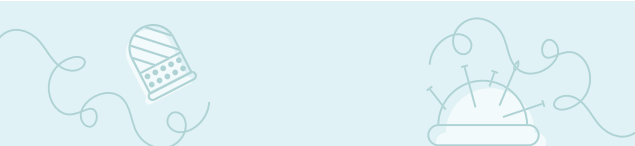


Place the pants waistband in half, right side inside, and pin it along the short edges. Stitch the waistband in a ring with two straight seams 60 mm (2 3/8") and 15 mm (9/16"), leaving an opening for the elastic. Press the seam allowances open.

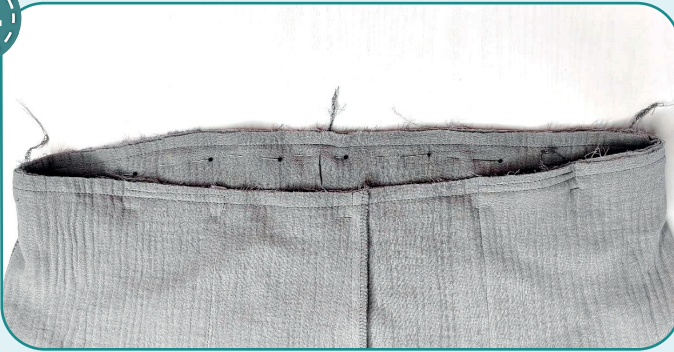
13



Fold the waistband in half, lengthways, wrong side inside, and press it.



14



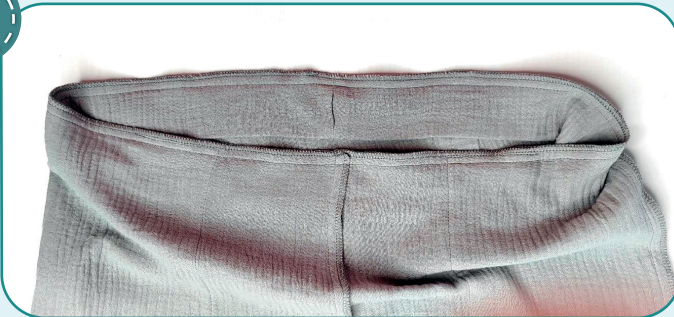




 2,5-3

Pin the waistband to the garment upper edge with right sides together. Align the waistband seam with the back crotch seam. Align the waistband center with the front crotch seam and the marks are aligned with the side seams. Stitch the pieces 10 mm (3/8") in from the edge.

15





 3-4
 
 7

Finish the seam allowances together with the serger. Press the seam allowances downwards.

16



Cut the elastic 40 mm (1 9/16") wide and with the length, indicated on the waistband pattern. Thread it through the opening in the waistband with a safety pin or a bodkin.

**NOTE.** In this garment, an easier method is chosen, but the pattern includes the elastic 50 mm (2") wide, which is sewn on together with the waistband using the method described below. Join the ends of the elastic together by a straight or a zigzag stitch. Place the elastic into the waistband. Topstitch the waistband edges, together with the elastic in it, 7 mm (1/4") in from the edge. While stitching, evenly stretch the elastic, and care the waistband fold to be close to the elastic. Stitch slowly and care the needle to be at its lowest position. Stitch the waistband to the garment upper edge 1 cm (3/8") away from it. Finish the edges.

17







 2,5-3

Join the ends of the elastic together by a straight or a zigzag stitch. Evenly spread the elastic along the waistband.



**NOTE.** It is recommended to try it on, check the fit, length and ease. Make sure, that the pants waistband is comfortable to wear. If need be, change the length of the elastic.



18



Hand-baste the opening in the waistband with a blind stitch.

19



Evenly stretching the elastic, stitch the seams 15 mm (9/16") and 30 mm (1 3/16") away from the waistband fold.



20

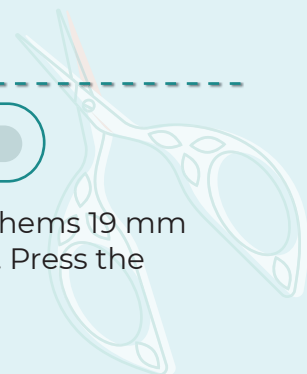


Press the pants lower hems to the wrong side first by 10 mm (3/8") and then by 20 mm (13/16"). You can hand-baste the lower hems.

21



Topstitch the pants lower hems 19 mm (3/4") away from the edge. Press the seams.





22



Remove the basting stitches, trim, and hide the thread tails and press the garment once again. The pants are ready!



ELINA PATYKOVA  
ВЫКРОЙКИ

## Loose Suit

Thank you for joining my  
team and me!  
Share your works in my  
groups. Hope you will stay  
with us for our next project!

