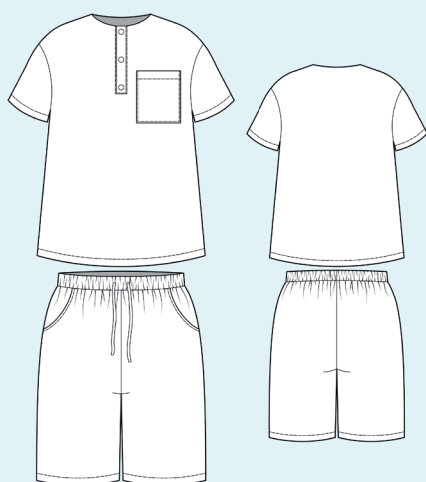


ELINA PATYKOVA
ВЫКРОЙКИ

Instructions
for sewing

Muslin Suit

#патыкова_костюммуслин



Skill level



Materials and notions



- muslin
- fusible interfacing with a density of 45-50 g/m²
- kantenband (stabilising tape)
- formband (a bias strip of fusible interfacing with a chain stitching along the center)
- buttons 12-15 mm (1/2-9/16") - 3 pcs
- elastic 35 mm (1 3/8") wide
- matching thread
- Universal 80 needles

If you are not sure about the fit of the garment, it is recommended to sew a muslin with similar properties (elasticity, thickness, drape) first. This will allow you

to adjust the length, width and fit of the garment and save time.



To find out how long a piece of fabric to take, you should place the pattern pieces onto the table, the floor or bedspread, pre-measured width equal to half the width of the selected fabric. Place the pieces, caring the direction of the grain line, their number, i.e., the way you will place them when cutting. Measure the length of the pattern pieces fit, add to this length 5% for the fabric shrinkage - this will be the required amount of fabric for the project. Before beginning your sewing project, wash the fabric in warm water, dry and iron it.

Cutting layout: Print and glue the paper patterns. When printing, do not forget to check the size of the test square. Put the paper pattern pieces onto the fabric. It is important to check that the grain is straight. Pin the paper pattern pieces to the fabric gently and cut the fabric along outline. Note: seam allowances are already included. Transfer all the marks from the pattern onto the wrong side of your fabric.

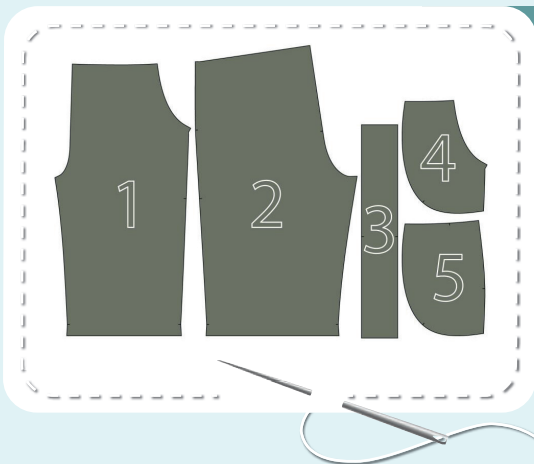


Now you have



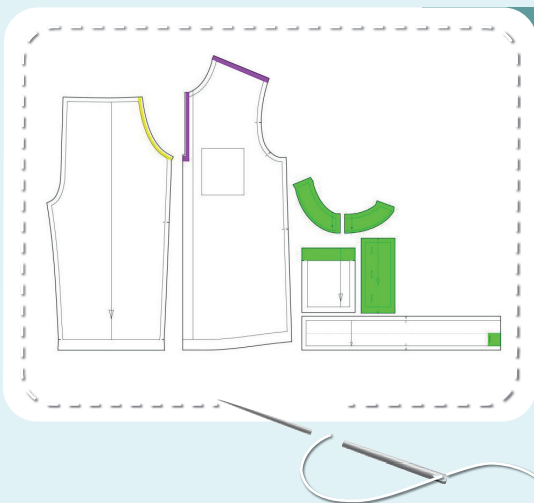
SHIRT PIECES (MUSLIN):

1. back - cut 1 on the fold
2. front - cut 1 on the fold
3. sleeve - cut 2
4. front facing - cut 2 (cut rough)
5. back facing - cut 1 on the fold (cut rough)
6. patch pocket - cut 1
7. front placket - cut 2 (cut rough)



SHORTS PIECES (MUSLIN):

1. front - cut 2
2. back - cut 2
3. waistband - cut 1 on the fold
4. pocket lining - cut 2
5. side front - cut 2



PIECES TO INTERFACE:

- Green - fusible interfacing
 - front facing pieces and back facing
 - front placket pieces
 - patch pocket top seam allowance
 - places for the cord holes on the garment waistband
- Violet - kantenband (stabilising tape)
 - area along the front opening for the placket
 - front shoulder edges
- Yellow - formband (a bias strip of fusible interfacing with a chain stitching along the center)
 - area along the pocket openings on the shorts front

Construction

Symbols



straight stitch



the stitch length in (mm)



flat lock stitch



zigzag stitch



the stitch width in (mm)



3-Step Zigzag Seam Finishing



unilateral zipper presser foot



universal presser foot



invisible zipper presser foot



pinning

You should lockstitch the seam and trim the thread tails or tie the seam thread tails and hide them into the seam after sewing a serger stitch or cover seaming chain stitch.



double welting (piping) presser foot



3-thread serger stitch



4-thread serger stitch

NOTE

A

4-thread serger stitch

If you do not have a serger, you can use stretch stitches available on your sewing machine, or at least, a zigzag stitch.

B

3-thread serger stitch

If you do not have a serger, you can replace it with an overedge stitch, or a zigzag stitch.

C

flat lock stitch

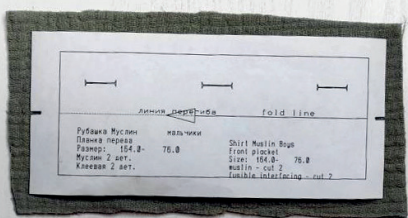
If you do not have a coverstitch machine, the flat seam can be performed with a) a twin needle on a sewing machine, b) decorative stretch seam on a sewing machine, c) finish the seams with serger and stitch them with a straight stitch.



Shirt construction

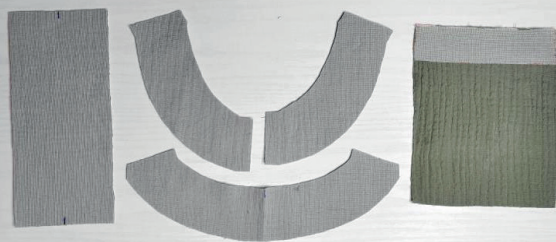


1



Front plackets, front facings and back facing are cut rough. It means we expand the allowances at about 10-15 mm (3/8 - 9/16"). Do it because after you duplicate the piece, it can shrink significantly. Duplicate the pieces.

2



Cut the front plackets, front and back facing pieces according to the pattern and transfer the marks. Duplicate the patch pocket top seam allowance.

3



Fuse a piece of kantenband or stabilising tape along the opening for the front placket, and the front shoulder edges.

4



Finish the patch pocket top seam allowance with the serger. Press the pocket.

5





5



2,5-3

Press the top seam allowance to the wrong side at 30 mm (1 3/16"). Topstitch it 25 mm (1") in from the edge.

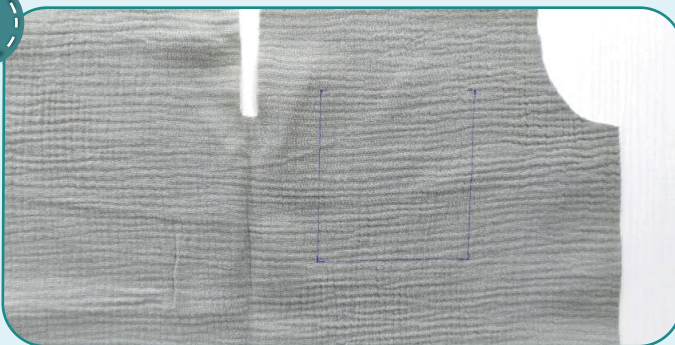
NOTE. If you lack experience, it is better to hand-baste the seams beforehand.

6



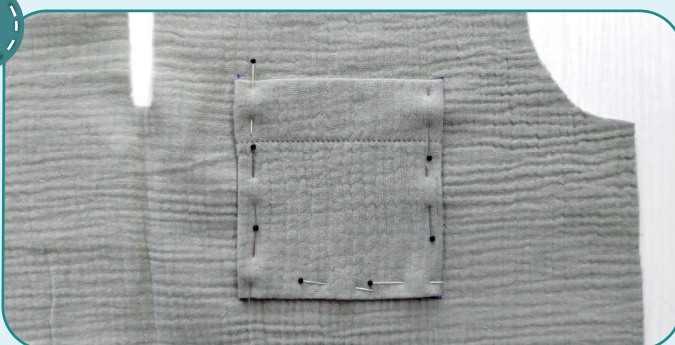
Press the lower and side seam allowances to the wrong side at 12 mm (1/2").

7



Transfer the marking for the patch pocket from the paper pattern onto the wrong side of the front piece (onto the left half of it).

8



Affix the pocket, faced up, along the marking (with pins, basting stitching, or a glue stick).

SHIRT CONSTRUCTION

9



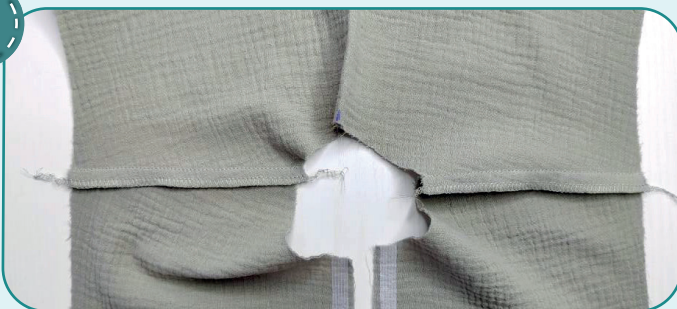
Edgestitch the pocket along three sides 1 mm (1/16") in from the edge. Bar tack at the seam ends. Press the pocket.

10



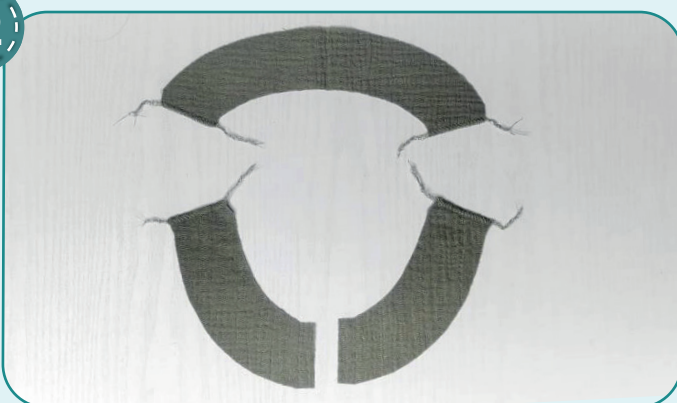
With right sides together, pin the front and the back along the shoulder edges. Stitch them 10 mm (3/8") in from the edge.

11



Finish the shoulder edges with the serger. Press the seam allowances towards the front.

12



Finish the shoulder edges of the facing pieces with a 3-thread serger stitch. Press it.

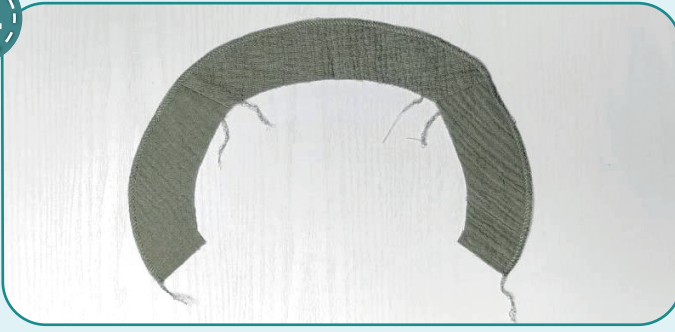
13



With right sides together, stitch the shoulder edges of the front and back facing pieces 10 mm (3/8") in from the edge. Press the seams open.

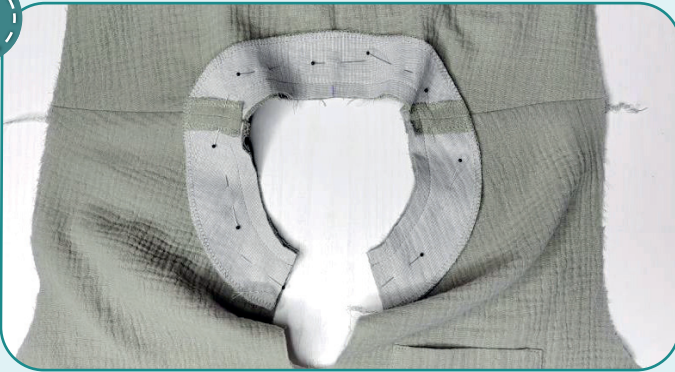


14



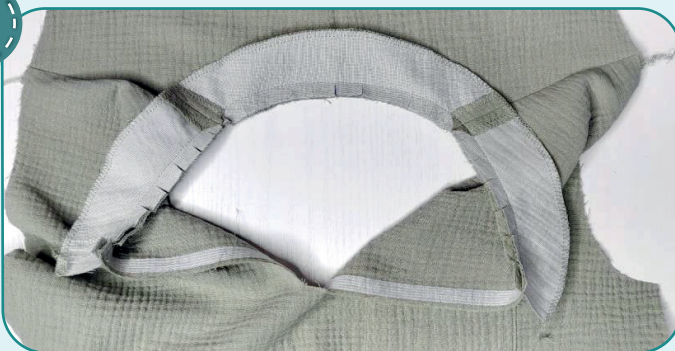
Finish the facing outer edge with the serger. Press it.

15



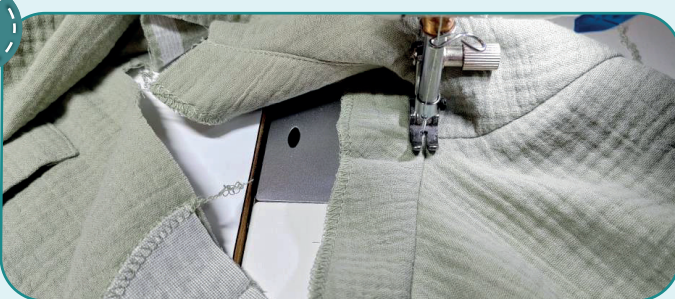
With right sides together, pin the facing to the garment neckline aligning the centers and shoulder seams. Stitch them 10 mm (3/8") in from the edge.

16



Slash the neckline seam allowances every 10-15 mm (3/8-9/16") leaving 1 mm (1/16") before the stitching.

17

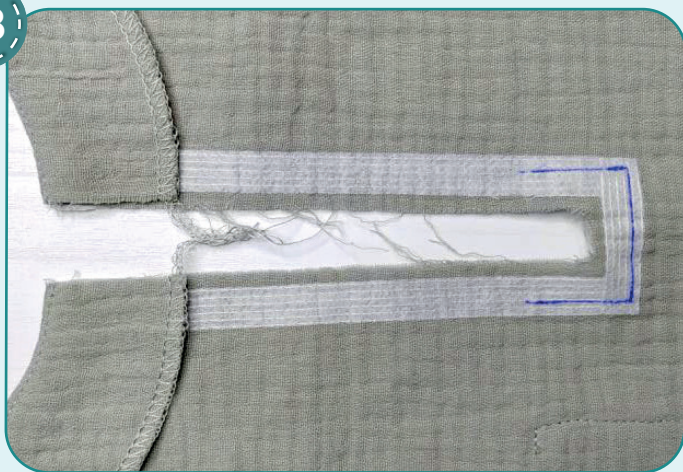


Sew up the seam allowances onto the facing 1 mm (1/16") away from the seam. Press out the facing to the wrong side forming a roll.



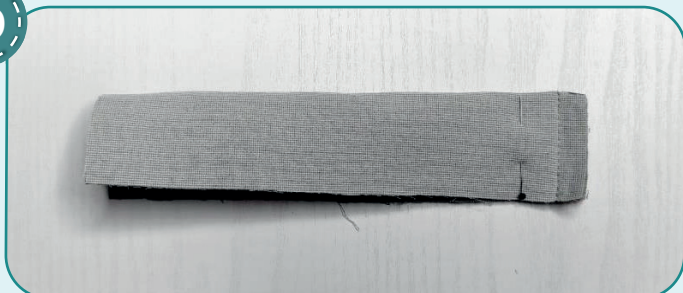


18



Working from the wrong side, transfer the marking for the placket from the pattern onto the area at the opening bottom.

19



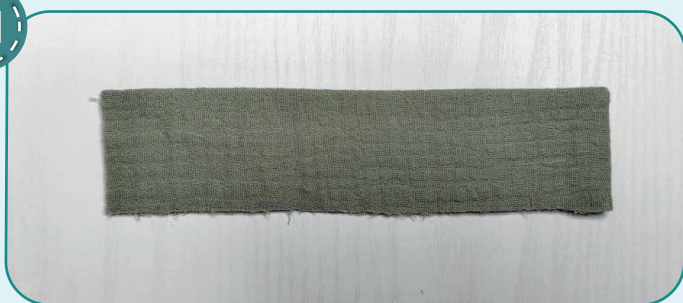
Fold the placket band in half along the long edges. Stitch one of its short edges 10 mm (3/8") in from the edge.

20



Clip the corners.

21



Turn the placket out and press it. Repeat the process for the other placket piece (steps 19-21).

NOTE. At this stage it is most convenient to sew and cut buttonholes on the left-hand placket. When the garment is finished, the thickness difference can cause difficulty in sewing the bottom buttonhole.

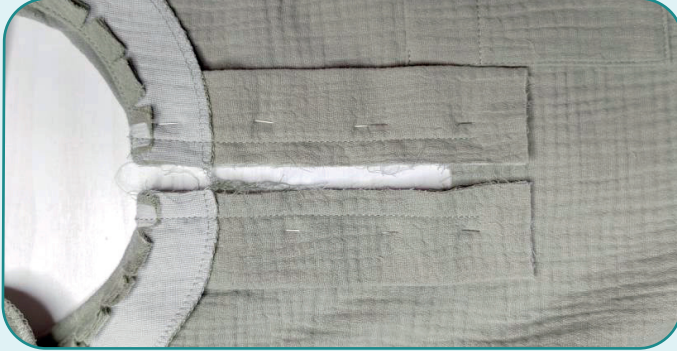




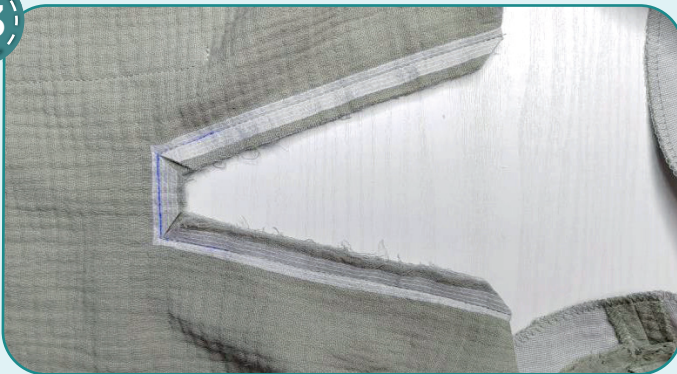
22



With right sides together, pin the plackets raw edges to the opening, aligning the edges. Bend the facing to the wrong side atop the plackets. Working from the front side, stitch the plackets exactly along the marking. Stitch 10 mm (3/8") in from the edge.



23



Slash the front to the corners leaving 1 mm (1/16") before the placket attaching seams.

24



Place the left-hand placket atop the right one. Evenly align the edges and pin them. Place the plackets bottom ends inside (to the wrong side).

25



Align and pin the placket bottom edges and the seam allowances of the opening for the placket. Align the placket folds and the opening corners. Stitch them along the marking. Make sure the right side is good, no folds are formed.



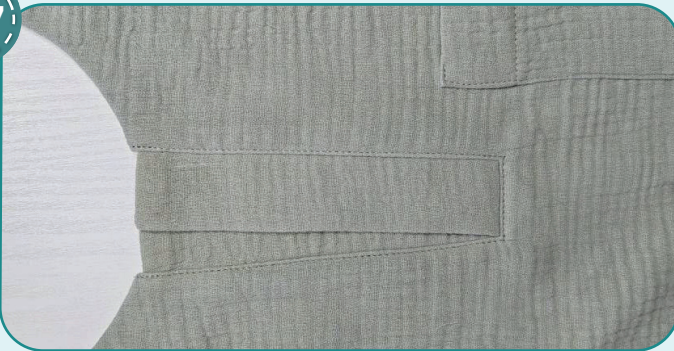


26



Trim the plackets corners and the seam allowances of the facing to 3-4 mm (1/8"). Finish with the serger the plackets and opening edges along the perimeter. Turn the garment to the right side and iron it.

27

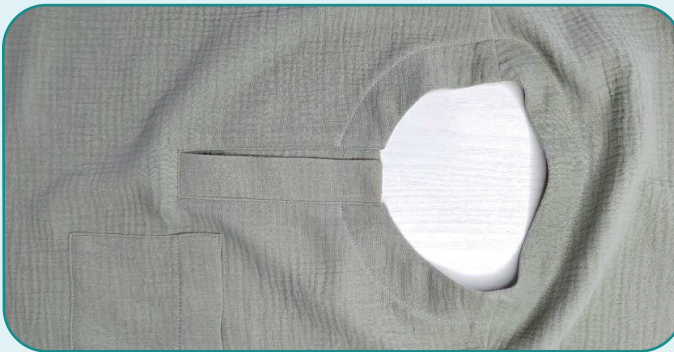


Edgestitch along the placket 1 mm (1/16") in from the attaching seam. Press it.

28



Edgestitch the facing along the serger stitching. Work from the wrong side.



29



Pin the back and the front along the side edges with right sides together. Stitch them 10 mm (3/8") in from the edge.



30



3-4



7

Finish the side edges with the serger. Press the seam allowances towards the front.

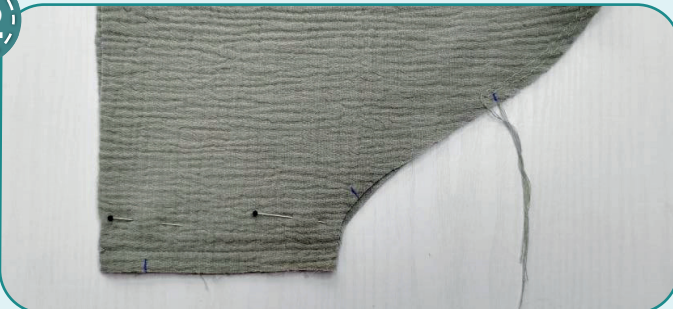
31



4-5

Work two rows of long stitches around the sleeve cap 6 mm (1/4") and 4 mm (1/8") in from the edge. Set the stitch maximum length (4-5 mm), do not bar tack the seam ends and leave the thread tails at least 50 mm (2").

32



2,5-3

Pin the sleeve along the side edges, right side inside. Stitch them 10 mm (3/8") in from the edge.

33



3-4



7

Finish the edges with a 3-thread serger stitch. Press the seam allowances towards the front.

34



Pin the sleeve to the garment armhole with right sides together. Align the side seams and the marks. You can see there a surplus of fabric along the sleeve cap.



35



Pull up the gathers to make the sleeve cap fit the armhole. To do it use the thread tails of two rows of long stitches along the sleeve cap. Tie the thread tails. Evenly spread the folds along the sleeve cap, so that no crease marks are formed. Baste along the sleeve cap.

36



Stitch the sleeve into the armhole around the edge 10 mm (3/8") in from the edge. Stitch on the sleeve side, caring there aren't any folds formed along the sleeve cap.

37



Finish the seam allowances with the serger. Press the seam on the edge. Repeat the process for the other sleeve (steps 31- 37).

38



Press the garment and sleeves lower hems to the wrong side first by 10 mm (3/8") and then by 15 mm (9/16"). You can hand-baste the edges.

39



Topstitch the garment and sleeves lower hems 14 mm (9/16") away from the edge. Press them.



40



Transfer the marks for the buttonholes from the pattern onto the left-hand placket. Use the buttonholing foot to sew buttonholes to the size of the buttons prepared. Carefully cut the buttonholes with a seam ripper but avoid cutting the stitching threads. Press it. Transfer the marking for the buttons onto the right-hand placket. Hand-stitch or machine the buttons.

41



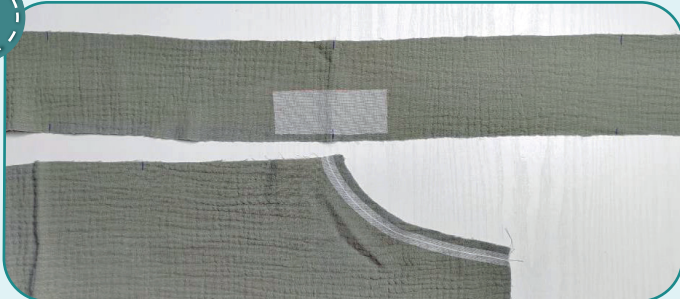
Remove the basting stitches, trim the thread tails, and press the garment. The shirt is ready!



Shorts construction



1



Fuse pieces of stabilising tape to the pocket openings on the fronts. Duplicate the places for the buttonholes.

2



With right sides together, pin the pocket lining to the front along the pocket opening. Stitch them 10 mm (3/8") in from the edge.

3



Slash the seam allowances every 10-15 mm (3/8-9/16") leaving 1 mm (1/16") before the stitching.

4



Turn the pocket out and press forming a roll towards the pocket lining. Topstitch the pocket opening 7 mm (1/4") in from the edge. Press the pocket opening again.

5



Pin the side front to the pocket lining with right sides inside. Stitch along the side edges 10 mm (3/8") away from the edge.

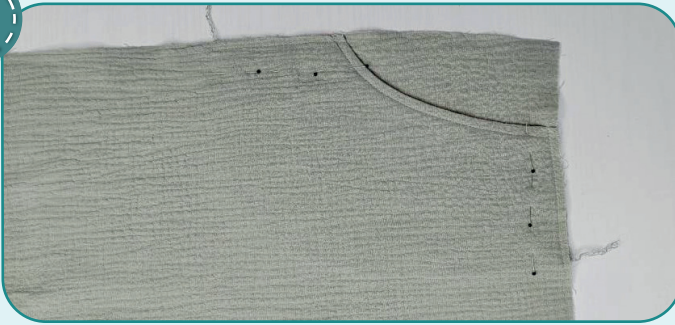


6



Finish the seam allowances with the serger. Press the pocket.

7



Secure the pocket bag with straight stitching above and below the pocket opening 7 mm (1/4") away from the edge. Repeat the process for the opposite pocket (steps 2-7).

8



Pin the front and the back along the side edges and inseams. Stitch them 10 mm (3/8") in from the edge.

9



Finish the inseams and side seams with the serger. Press the inseam allowances towards the front. Press the side seam allowances towards the back.

10



Insert the left pant leg into the right one with right sides together. Pin the crotch seam aligning the marks and the inseams. Stitch it 10 mm (3/8") in from the edge.



11



3

3-4

7

Finish the crotch seam allowances with the serger. Press the seam allowances towards the right.

12



Use a buttonholing presser foot to make buttonholes with the size about 10 mm (3/8"). Carefully cut the buttonholes with the seam ripper but avoid cutting the stitching threads. Press it.

13



↻

3-4

↻

2,5-3

Fold the waistband in half, right side inside, and pin it along the short edges. Stitch the waistband in a ring 10 mm (3/8") in from the edge. Press the seam allowances open.

14



Fold the waistband in half, lengthways, wrong side inside and press it.

15



↻

3-4

↻

2,5-3

Cut the elastic 35 mm (1 3/8") wide and with the length, indicated on the shorts waistband pattern. Stitch the elastic in a ring with a straight or zigzag stitch.

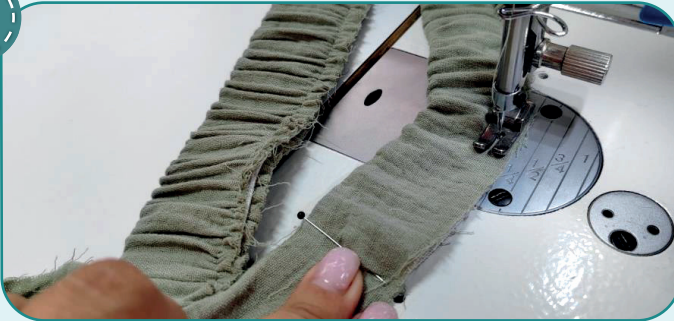
16



2,5-3

Divide the elastic into quarters, and pin-mark. Place the elastic inside the waistband, align the marks on the elastic with the marks on the waistband and pin at these places. To avoid bulk, do not align the elastic and the waistband seams.

17



2,5-3

Stitch the waistband edges together with the elastic in it, 7 mm (1/4") in from the edge. While stitching, evenly stretch the elastic, and care the waistband fold to be close to the elastic. Sew very slowly. When stretching the elastic, care the needle to be at its lowest position.



NOTE. The elastic should be 35 mm (1 3/8") wide and sewn to the shorts together with the waistband. If you are not sure about the length of the elastic you have or this method of processing seems difficult, then use elastic 25 mm (1") wide. In that case, stitch the waistband without elastic (be sure to leave an opening for it), and then thread the elastic and stitch it in a ring.

18



2,5-3

Turn the garment out to the wrong side and place the waistband with elastic to the garment upper edge. Pin the waistband to the garment upper edge, with right sides together, aligning the waistband seam with the garment back crotch seam, waistband center with the front crotch seam and the marks with the side seams. Stitch the waistband 10 mm (3/8") in from the edge. When stitching, evenly stretch the elastic.

SHORTS CONSTRUCTION

NOTE. It is recommended to try it on, check the fit, length and ease. When fitting, consider the lower hem width. Make sure, the waistband is comfortable to wear.

19



3 3-4 7

Evenly stretching the elastic, finish the seam allowances with the serger. Press the seam allowances downwards.

20



2,5-3

Press the pant leg lower hems to the wrong side first by 10 mm (3/8") and then by 15 mm (9/16"). You can hand-baste the edges. Topstitch the garment lower hems 14 mm (9/16") away from the edge. Press them.

NOTE. There is no cord piece in this model of shorts. You can cut it yourself as described below or buy a ready-made cord.

21



Cut a strip of fabric 30 mm (1 3/16") wide and the length you need. Press the strip edges to the center with wrong side inside. Fold it in half, lengthways, and press. For convenience, you can hand-baste it beforehand.

22



2,5-3

Edgestitch it 1 mm (1/16") in from the edge. Press.



23



Thread the cord and tie the knots. Remove the basting stitches, trim the thread tails and press the garment. The shorts are ready.



ELINA PATYKOVA
ВЫКРОЙКИ

Muslin Suit

Thank you for joining my team and me!
Share your works in my groups. Hope you will stay with us for our next project!

