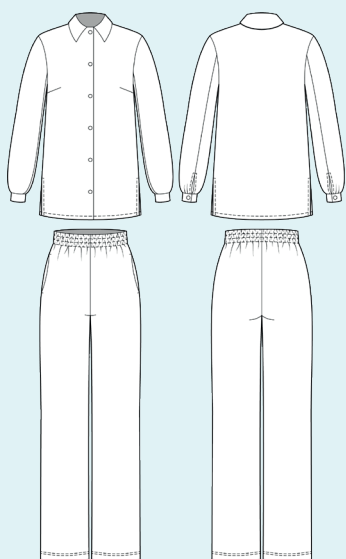


ELINA PATYKOVA  
ВЫКРОЙКИ

Instructions  
for sewing

## Corduroy Suit

#патыкова\_костюмвельвет



Skill level



## Materials and notions



- corduroy
- fusible interfacing 75-95 cm (29 1/2"-37 3/8")
- kantensband or stabilising tape 70-80 cm (27 1/2"-31 1/2")
- snaps 12,5 mm (1/2") - 8 pcs
- elastic 40 mm (1 9/16") wide
- matching thread
- Universal 80 needles

If you are not sure about the fit of the garment, it is recommended to sew a muslin with similar properties (elasticity, thickness, drape) first. This will allow you

to adjust the length, width and fit of the garment and save time.



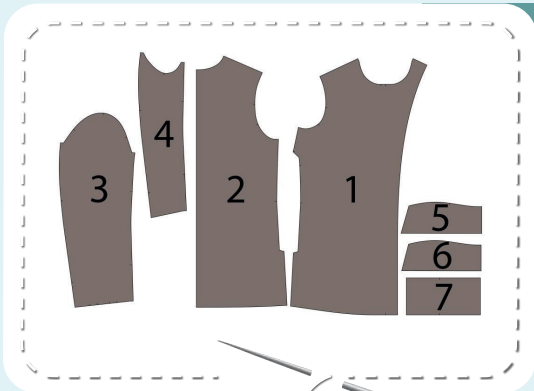
To find out how long a piece of fabric to take, you should place the pattern pieces onto the table, the floor or bedspread, pre-measured width equal to half the width of the selected fabric. Place the pieces, caring the direction of the grain line, their number, i. e., the way you will place them when cutting. Measure the length of the pattern pieces fit, add to this length 5% for the fabric shrinkage - this will be the required amount of fabric for the project. Before beginning your sewing project, wash the fabric in warm

water, dry and iron it.  
How to cut: Print and glue all the paper patterns. When printing, do not forget to check the size of the test square. Put the paper pattern pieces onto the fabric. It is important to check that the grain is straight. Pin the paper pattern pieces to the fabric gently and cut the fabric along the outline. Note: seam allowances are already included. Transfer all the marks from the pattern onto the wrong side of your fabric.



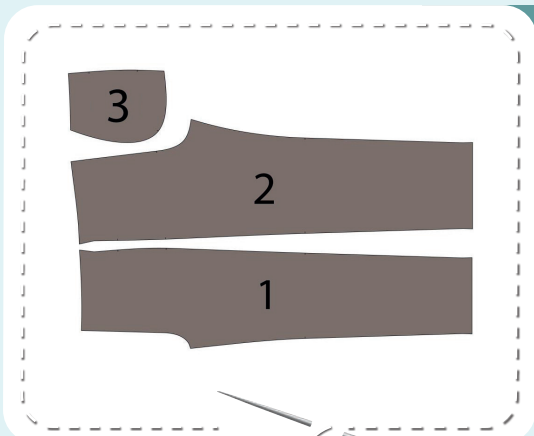


# Now you have



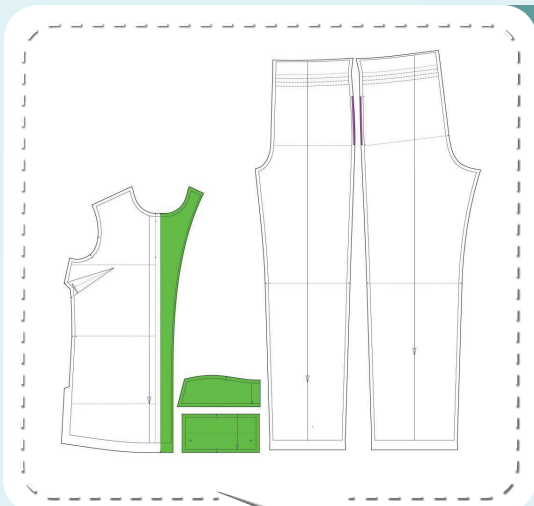
## SHIRT PIECES:

1. front - cut 2
2. back - cut 1 on the fold
3. upper sleeve - cut 2
4. under sleeve - cut 2
5. upper collar - cut 1 on the fold
6. under collar - cut 1 on the fold
7. sleeve cuff - cut 2



## PANTS PIECES:

1. front - cut 2
2. back - cut 2
3. pocket lining - cut 4



## PIECES TO INTERFACE:

- Green - fusible interfacing
  - under collar
  - front facings
  - sleeve cuffs
- Violet - kantenband (stabilising tape)
  - pocket opening area on the pants front and back pieces

# Construction

# Symbols



straight stitch



the stitch length in (mm)



flat lock stitch



zigzag stitch



the stitch width in (mm)



3-Step Zigzag Seam Finishing



unilateral zipper presser foot



universal presser foot



invisible zipper presser foot



pinning

You should lockstitch the seam and trim the thread tails or tie the seam thread tails and hide them into the seam after sewing a serger stitch or cover seaming chain stitch.



double welting (piping) presser foot



3-thread serger stitch



4-thread serger stitch

## NOTE

A

### 4-thread serger stitch

If you do not have a serger, you can use stretch stitches available on your sewing machine, or at least, a zigzag stitch.

B

### 3-thread serger stitch

If you do not have a serger, you can replace it with an overedge stitch, or a zigzag stitch.

C

### flat lock stitch

If you do not have a coverstitch machine, the flat seam can be performed with a) a twin needle on a sewing machine, b) decorative stretch seam on a sewing machine, c) finish the seams with serger and stitch them with a straight stitch.

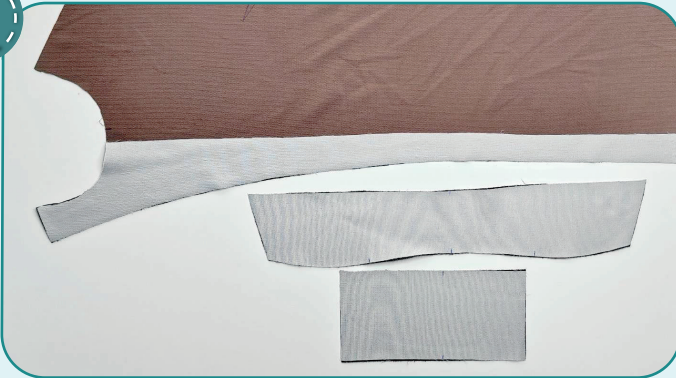




# Shirt construction



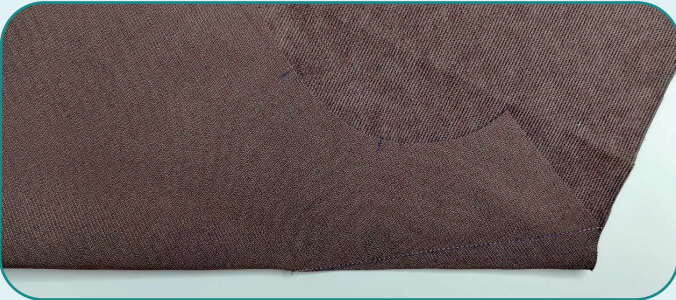
1



Duplicate the under collar, front facings and cuffs.



2



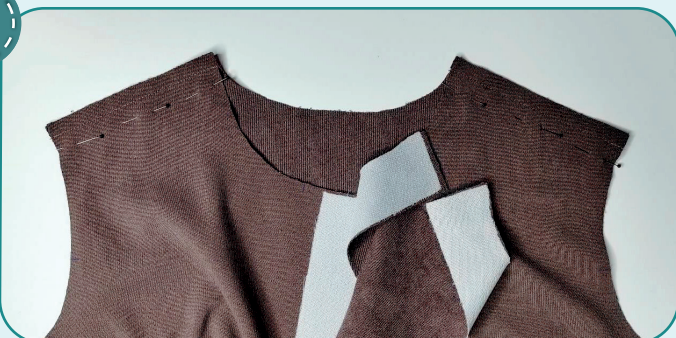
2,5-3

Transfer the marking for the darts from the paper pattern onto the fronts wrong side. Pin the darts carefully aligning their sides. Stitch the darts along the marking. Press the darts upwards.

**NOTE.** If you lack experience, it is better to hand-baste before every step.



3



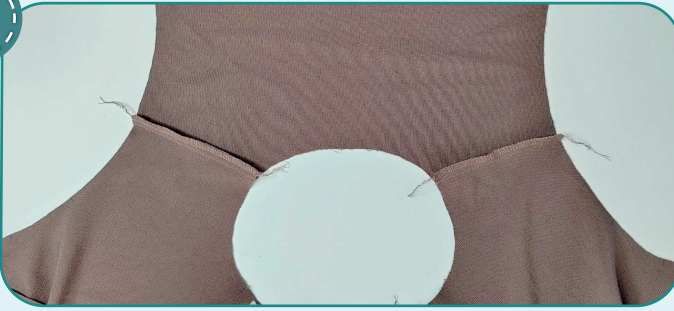
2,5-3

With right sides together, pin the fronts and the back along the shoulder edges. Stitch the pieces 10 mm (3/8") in from the edge.

## SHIRT CONSTRUCTION



4



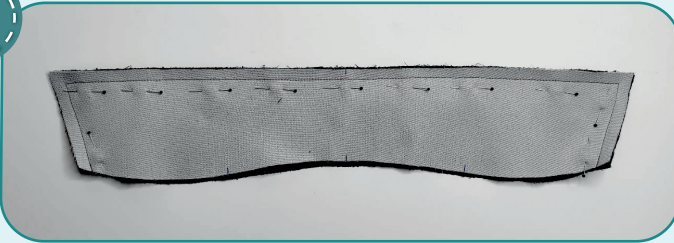
3

3-4

7

Finish the shoulder edges with the serger. Press the seam allowances towards the back.

5



2,5-3

3-4

7

Pin the upper and under collars with right sides together, matching the edges. Stitch them 10 mm (3/8") in from the edge.

6



Trim the upper collar seam allowances to 5 mm (3/16"). The allowances, cut gradually, will stand out less on the collar right side. Clip the corners.

7



Turn the collar out and smooth the corners. Press it forming a roll towards the under collar.

8



3

3-4

7

Finish the center and shoulder edges on the front facings with the serger. Iron the front facing and then press it along the fold-line towards the front wrong side.

9



2,5-3

3-4

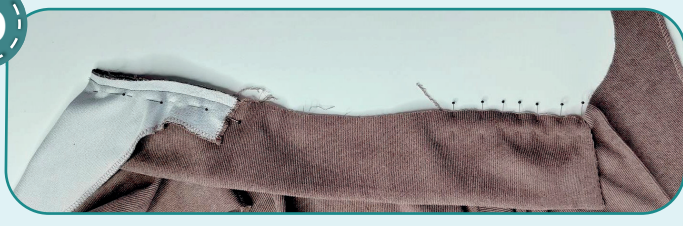
7

Pin the under collar to the back neckline with right sides together aligning the marks. Stitch from one shoulder seam to the other, 10 mm (3/8") in from the edge.





10



2,5-3

Align the collar lower edges and pin them to the front neckline. The collar edges should match the marks on the front neckline. Place the front facings over the upper collar (right sides together) and pin them. Stitch the front, the collars and the front facings with one seam 10 mm (3/8") in from the edge. Finish stitching on the front facing shoulder edge. It means that you should not stitch the upper collar edge along the back.

11



Trim the seam allowances of the front facings and collars to 4-5 mm (3/16"). Clip the corners. Slash the seam allowances of the collars and the neckline at the shoulder marks leaving 1 mm (1/16") before the stitching. Slash the neckline curved edges. Turn out the front facings to the right side. Press them. Press the back neckline seam allowances towards the collar.

12



Tuck the upper collar seam allowance inside. Hand-baste the upper collar edge to the back neckline with this edge covering the attaching seam. Press it. Align the shoulder seams with front facings shoulder seams. Baste them.

13



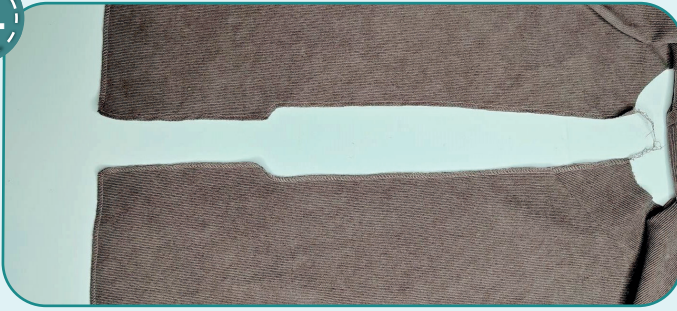
2,5-3

Working from the right side, stitch the collar to the garment between the shoulder seams having the needle got exactly atop the collar attaching seam. The upper collar edge should get into the seam. You should also stitch the front facing shoulder edges without discontinuing stitching. You should stitch exactly atop the shoulder seam. If it seems difficult, you can hand-baste the upper collar edge and front facings shoulder seams with a blind stitch. Press the neckline.





14



Finish the side and lower edges of the back and front with the serger. Press.

15



With right sides together, pin the front and the back along the side edges. Stitch the pieces 10 mm (3/8") away from the edge until the side vent. Press the seams open.

16



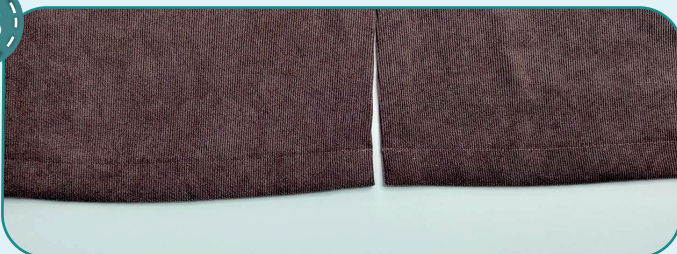
Press the garment lower hem at 30 mm (1 3/16") towards the wrong side. Fold the front facings lower edges and side vent edges towards the right side. Stitch along the lower edge 30 mm (1 3/16") in from the edge (along the fold-line).

17



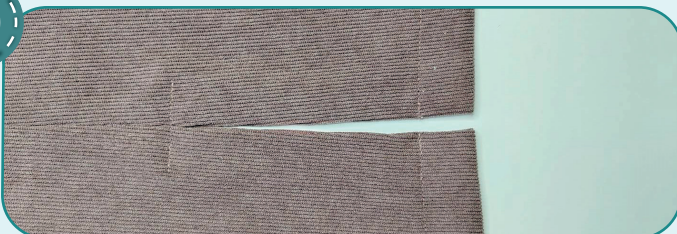
Clip the corners. Trim the seam allowances of the vents and the front facings to 5 mm (3/16"). Turn out the front facings and the vents, then press them.

18



Edgestitch the garment lower hem 25 mm (1") in from the edge. Press it.

19

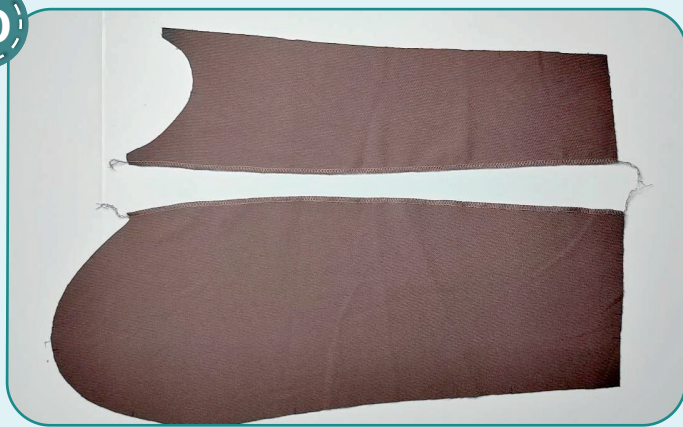


Reinforce the vent top. Stitch across it about 30 mm (1 3/16"). Repeat the process for the opposite vent.





20



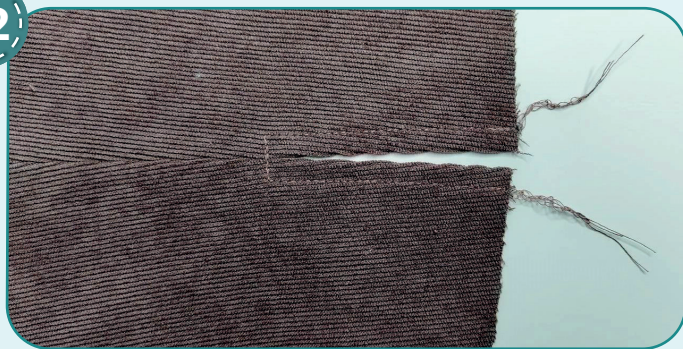
Finish the elbow back seam allowances on both sleeve pieces. Press them.

21



With right sides together, pin both sleeve pieces along the elbow back seam. Stitch the pieces till the split top mark, 10 mm (3/8") away from the edge. Press the seams open.

22



Topstitch the sleeve slit along the perimeter 7 mm (1/4") in from the edge. Press it.

23



Transfer the marks for the pleats from the paper pattern and place them facing the slit. Pin and affix them stitching 7 mm (1/4") in from the edge.

24



With right sides together, pin both sleeve pieces along the elbow back seam. Stitch the pieces 10 mm (3/8") in from the edge.





25



Finish the edges together with a 3-thread serger stitch. Press the seam allowances towards the sleeve upper piece.

26



Press the sleeve cuffs long edges to the wrong side at 10 mm (3/8"). Press them in half.

27



Pin the sleeve cuff to the sleeve with right sides together. Stitch them 10 mm (3/8") in from the edge. Press the seam allowances towards the cuff.

28



Fold the sleeve cuff lengthways, right side inside. Pin the short edges. Stitch the side edges 10 mm (3/8") in from the edge.

29



Clip the corners.





30



2,5-3

Turn the cuff out and press it. Hand-baste the cuff free edge covering the seam line. Working from the right side, stitch the cuff exactly into the cuff seam. Make sure the inside is also evenly stitched all the way. Remove the basting stitches and press it.



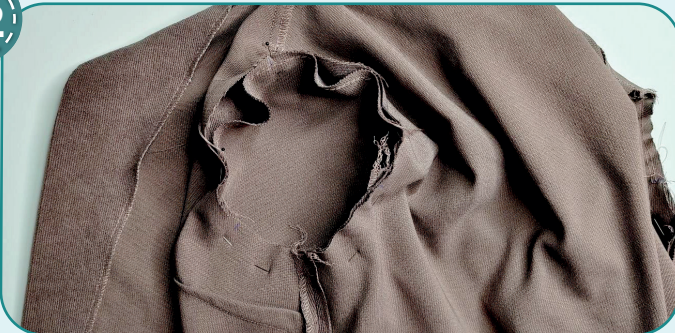
31



4-5

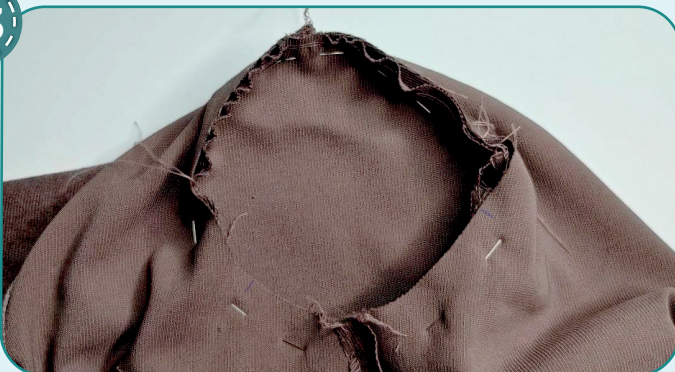
Work two rows of long stitches around the sleeve cap 6 mm (1/4") and 4 mm (1/8") in from the edge. Set the stitch maximum length (4-5 mm), do not bar tack the seam ends and leave the thread tails at least 50 mm (2").

32



Pin the sleeve to the garment armhole with right sides together. Align the marks and the seams. You can see there a surplus of fabric along the sleeve cap.

33



Pull up the gathers to make the sleeve cap fit the armhole. To do it use the thread tails of two rows of long stitches along the sleeve cap. Tie the thread tails. Evenly spread the folds along the sleeve cap, so that no crease marks are formed. Baste along the sleeve cap.





34



2,5-3

Stitch the sleeve into the armhole 10 mm (3/8") in from the edge. Stitch on the sleeve side, caring there aren't any folds formed along the sleeve cap.

35



3-4



7

Finish the seam allowances with the serger. Press the seam on the edge. Repeat the process for the other sleeve (steps 20-35).

36



Transfer the marking for the snaps onto the fronts and the cuffs. Punch 1-2 mm (1/16") holes with a Hole Punch or scissors. Attach the eyelets with a press.

37



Remove the basting stitches, trim and hide the thread tails, and press the garment once again. The shirt is ready!





# Pants construction



1



Fuse the pieces of kantenband to both pant pieces along the pocket opening.

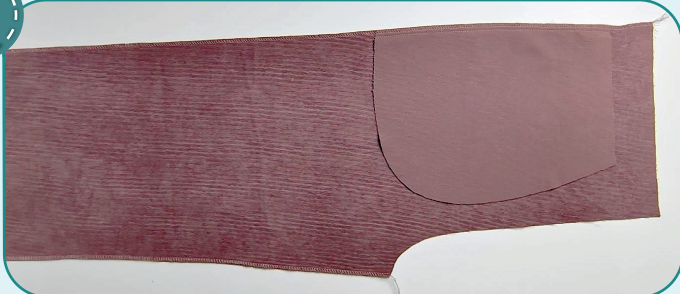
2



2,5-3

With right sides together, pin or baste the pocket lining to the front side edge aligning the marks. Stitch them 9 mm (3/8") in from the edge. Stitch the three remaining pocket lining pieces to the front and back pant pieces.

3



3-4



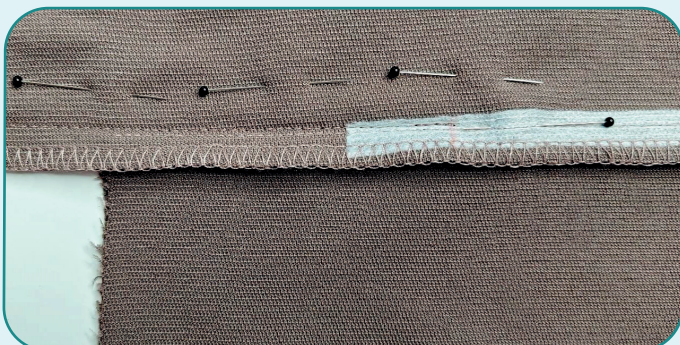
7

Finish the side and inside edges of front and back pant pieces. Press them.

4



2,5-3



With right sides together, pin the pant front and back pieces along the side edge (till the pocket). To have the pocket linings at the same level, hand-stitch along the pocket opening exactly into the pocket lining attaching seam. Stitch the side seam 10 mm (3/8") in from the edge. Finish stitching near the pocket opening bottom mark. Also stitch the side edge from the pocket opening top mark to the garment upper edge. Care the stitching along the pocket linings are 1-1.5 mm (1/16") away from their attaching seams. After stitching check no pocket linings are seen on the right side.



## PANTS CONSTRUCTION



5



2,5-3

Pin the pocket linings together. Stitch them 1 cm (3/8") in from the edge. Finish stitching at the side seam and care the seam allowances of the pants back not to get into the seam.

6

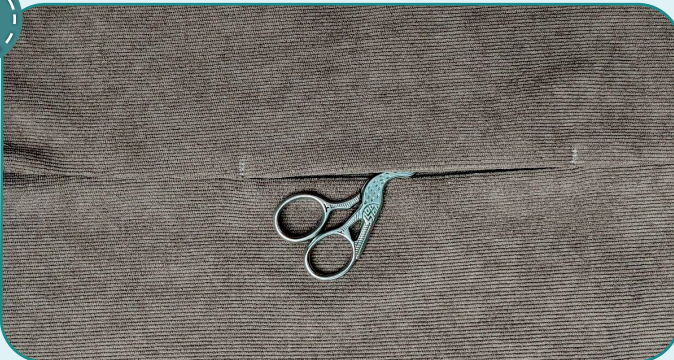


3-4

7

Finish the seam allowances with the serger. Iron the pocket and then press it onto the pants front. Press out the pant leg side seam.

7



2,5-3

Bar tack the pocket opening at both ends with two straight stitches. Start stitching exactly at the pocket opening marks. The seam length is about 7-10 mm (1/4-3/8"). Repeat the process for the opposite pocket (steps 4-7).



8



2,5-3

Pin the front and the back along the inseams. Stitch them 10 mm (3/8") in from the edge. Press the seam allowances open.





9



3-4



7

Finish the crotch seam with the serger. Press it.



10



2,5-3

Insert the left pant leg into the right pant leg with right sides together. Pin the crotch seam aligning the marks and the inseams. Stitch it 10 mm (3/8") in from the edge. Press the seam allowances open.

11



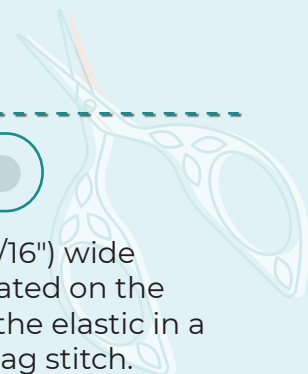
Smooth and place the pockets evenly. Pin or hand-baste the pocket lining upper edges.

12



2,5-3

Cut the elastic 40 mm (1 9/16") wide and with the length, indicated on the waistband pattern. Stitch the elastic in a ring with a straight or zigzag stitch.







13



Divide the elastic into fourths. Align the marks with the pants crotch seams and the side seams and pin the elastic to the garment wrong side. To avoid bulk, do not align the elastic and waistband seams.

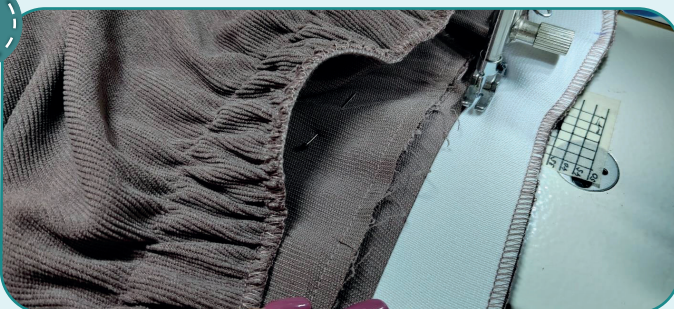
14



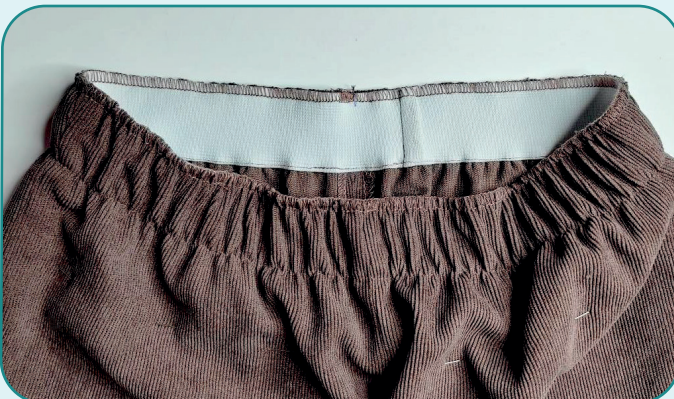
Serge the elastic evenly stretching it.



15



Evenly stretching the elastic, stitch its free edge to the garment. Working from the wrong side, stitch the elastic 2 mm (1/16") away from its edge.







16





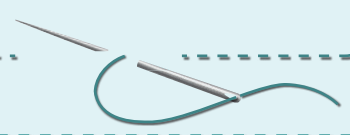


 2,5-3

Tuck the waistband inward to the width of the elastic and stitch 35 mm (1 3/8") away from the edge, stretching the elastic evenly. Make sure the pocket upper edges got into the waistband.



**NOTE.** It is recommended to try it on, check the fit, length and ease. When fitting, consider the lower hem width. It is also necessary to check if the pants waistband is comfortable to wear.



17





 3-4
 
 7

Finish the garment lower hems with the serger.

18

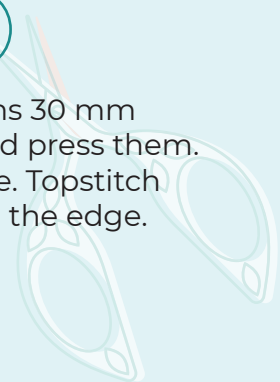






 2,5-3

Fold the garment lower hems 30 mm (1 3/16") to the wrong side and press them. You can whip stitch the edge. Topstitch the hems 25 mm (1") in from the edge. Iron.





19



Remove the basting stitches, trim and hide the thread tails, and press the garment once again. The pants are ready.





ELINA PATYKOVA  
ВЫКРОЙКИ

## Corduroy Suit

Thank you for joining my  
team and me!  
Share your works in my  
groups. Hope you will stay  
with us for our next project!

