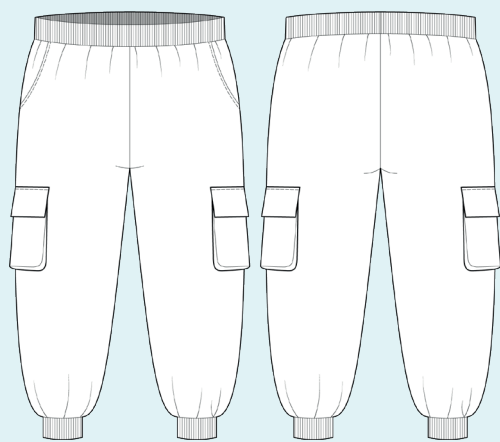


ELINA PATYKOVA
ВЫКРОЙКИ

Instructions
for sewing

Pants Gang

#патыкова_брюкиганг



Skill level



Materials and notions



- french terry
- rib knit fabric
- knit fusible interfacing
- elastic 35 mm (1 3/8") or 45 mm (1 3/4") wide (depending on the size)
- eyelets 8 mm (5/16") - 2 pcs
- cord 79-115 cm (31 1/8" - 45 1/4")
- matching thread
- Jersey 80 or Stretch 80 needles

If you are not sure about the fit of the garment, it is recommended to sew a muslin with similar properties (elasticity, thickness, drape) first. This will allow you

to adjust the length, width and fit of the garment and save time.



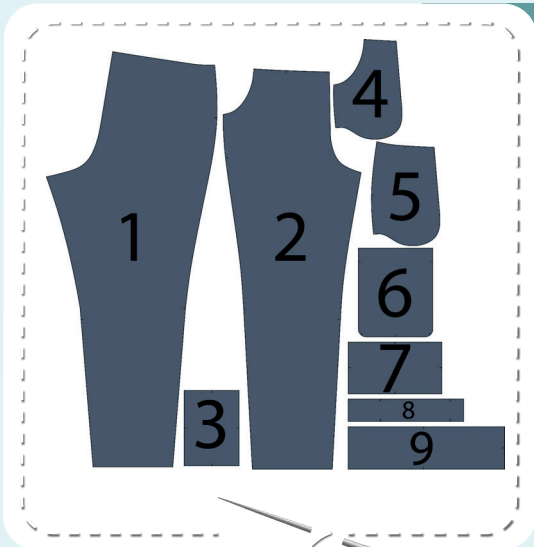
To find out what amount of fabric to take, you should place the pattern pieces onto the table, the floor or bedspread, pre-measured width equal to half the width of the selected fabric. Place the pieces, caring the direction of the grain line, their number, i.e., the way you will place them when cutting. Measure the length of the pattern pieces fit, add to this length 5% for the fabric shrinkage - this will be the required amount of fabric for the project. Before beginning your sewing project, wash the fabric in warm water, dry and iron it.

How to cut: Print and glue the paper patterns. When printing, do not forget to check the size of the test square.

Place the paper pattern pieces onto the fabric. It is important to check that the grain is straight. Pin the paper pattern pieces to the fabric gently and cut the fabric along the outline. Note: seam allowances are already included. Transfer all the marks from the pattern onto the wrong side of your fabric.

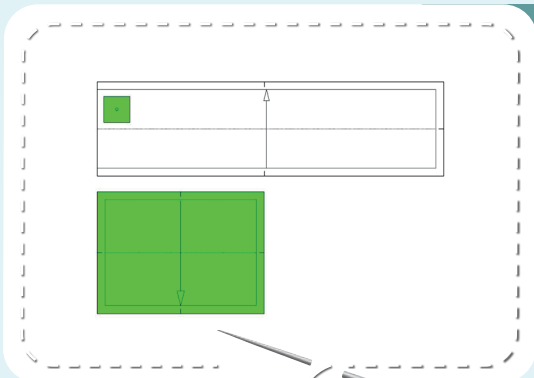


Now you have



PANTS PIECES:

1. back - cut 2 (french terry)
2. front - cut 2 (french terry)
3. cargo pocket flap - cut 2 (french terry)
4. pocket lining - cut 2 (french terry)
5. side front - cut 2 (french terry)
6. cargo pocket - cut 2 (french terry)
7. cuff - cut 2 (rib knit fabric)
8. cargo pocket gusset - cut 2 on the fold (french terry)
9. waistband - cut 1 on the fold (rib knit fabric)



PIECES TO INTERFACE:

- Green - fusible interfacing
 - places for eyelets on the waistband
 - cargo pocket flaps

Construction

Symbols



straight stitch



the stitch length in (mm)



flat lock stitch



zigzag stitch



the stitch width in (mm)



3-Step Zigzag Seam Finishing



unilateral zipper presser foot



universal presser foot



invisible zipper presser foot



pinning

You should lockstitch the seam and trim the thread tails or tie the seam thread tails and hide them into the seam after sewing a serger stitch or cover seaming chain stitch.



double welting (piping) presser foot



3-thread serger stitch



4-thread serger stitch

NOTE

A

4-thread serger stitch

If you do not have a serger, you can use stretch stitches available on your sewing machine, or at least, a zigzag stitch.

B

3-thread serger stitch

If you do not have a serger, you can replace it with an overedge stitch, or a zigzag stitch.

C

flat lock stitch

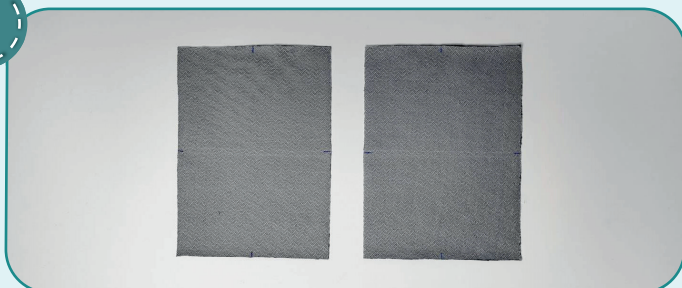
If you do not have a coverstitch machine, the flat seam can be performed with a) a twin needle on a sewing machine, b) decorative stretch seam on a sewing machine, c) finish the seams with serger and stitch them with a straight stitch.



Pants construction



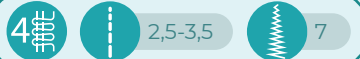
1



Duplicate the cargo pocket flaps and the places for eyelets on the waistband.



2



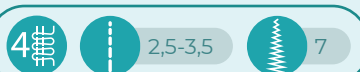
With the right sides together, pin the pocket lining to the pants front along the pocket opening. Serge them.

3



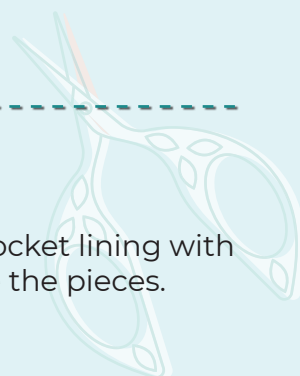
Press the lining to the wrong side forming a roll. Edgestitch along the pocket opening 5 mm (3/16") in from edge. Press the pocket.

4



Pin the side front to the pocket lining with right sides together. Serge the pieces. Press them.

5



PANTS CONSTRUCTION



5



2,5-3

Affix the pocket bag above and below the pocket opening, stitching 4-5 mm (3/16") away from the edges. Repeat the process for the opposite pocket (steps 2-5).

6



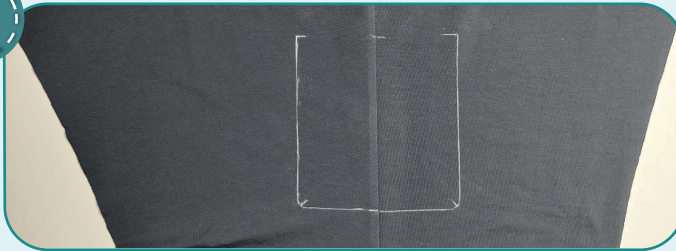
2,5-3,5



7

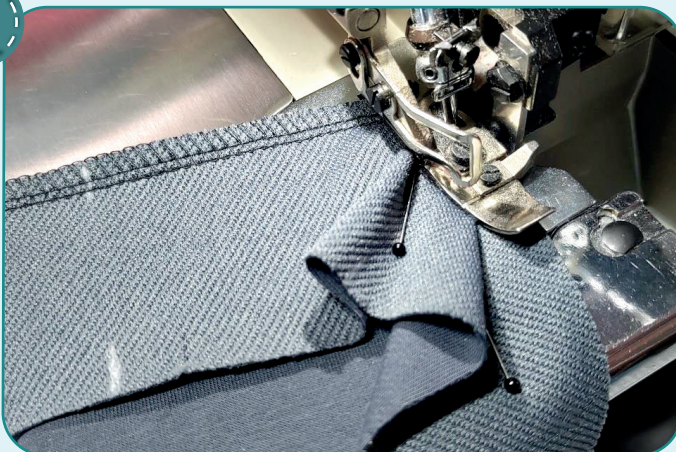
Place the pant front and back panels along the side edges with right sides together. Serge them. Press the seam allowances towards the back. Repeat the process for the other pant leg.

7



Transfer the marking for the cargo pocket onto the garment right side.

8



2,5-3,5



7

Pin the gusset to the cargo pocket with right sides together. Serge the pieces. Press the seam allowances onto the pocket and to avoid bulk press the pocket top seam allowance (upper 30 mm or 1 3/16") onto the gusset.





9



2,5-3,5



7

Finish the gusset outer edge and the pocket top edge with the serger. Press them.

10



2,5-3

Fold the cargo pocket top edge 30 mm (1 3/16") to the wrong side and press it. You can whip stitch the edge. Stitch it 25 mm (1") in from the edge. Press it.

11



Press the gusset free edge 12 mm (1/2") to the wrong side.

12



Hand-baste or pin the cargo pocket in place focusing on the marking and aligning the marks.





13



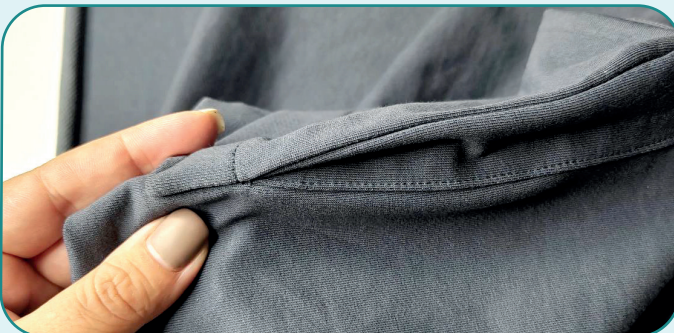
Edgestitch the pocket 1 mm (1/16") away from the edge and along the bottom and side edges. Press the pocket tucking the cargo pocket gusset inward.



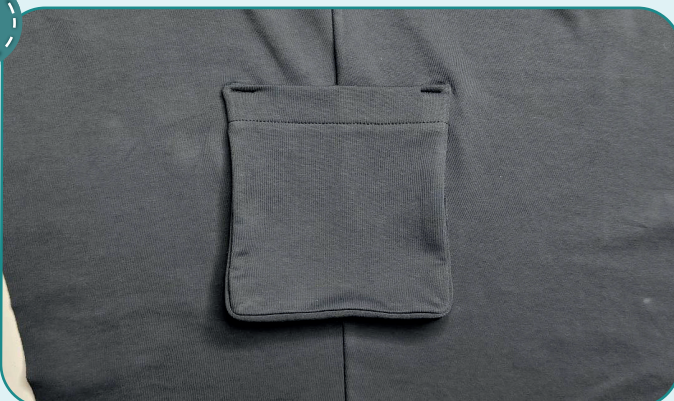
14



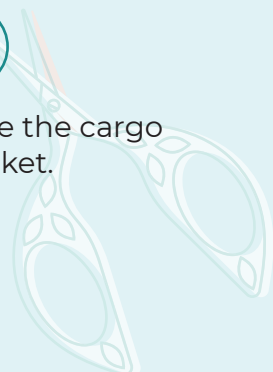
Tuck the patch pocket gusset inward, matching the gusset attaching seams with each other. Working from the pocket inside, stitch 25 mm (1") long seam exactly atop gusset attaching seams. Repeat the process for the pocket other side.



15



Make two bar-tucks to secure the cargo pocket gusset. Press the pocket.



PANTS CONSTRUCTION

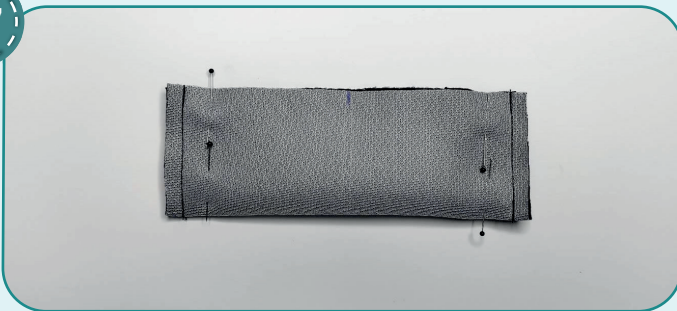


16



Draw a line 7 mm (1/4") away from the top edge to align the flap edge with it.

17



2,5-3

Fold the flap in half, right side inside. Stitch it along the short edges 7 mm (1/4") in from the edge.

18



Trim one of the seam allowances to 3-4 mm (1/8-3/16"). Clip the corners. Turn the flap out, smooth the corners and press.

19



2,5-3

Edgestitch the flap along three sides 5 mm (3/16") away from the edge. Press it.

20



Pin the flap to the garment with right sides together. Mark the seam line on the flap 8 mm (5/16") in from the edge.



21



2,5-3

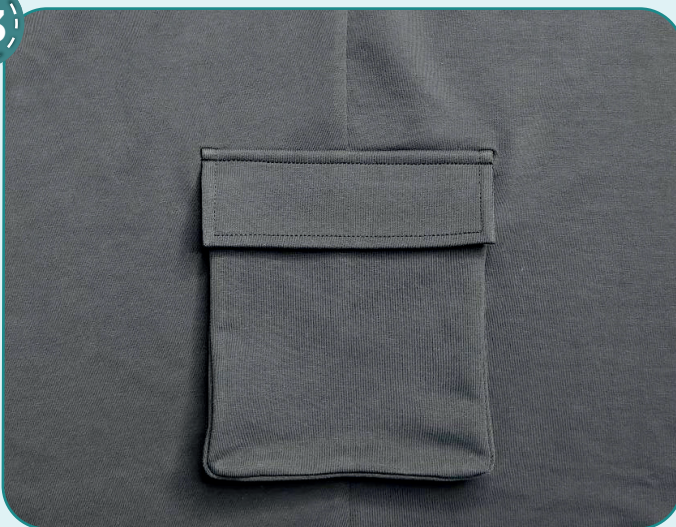
Stitch the flap to the pant leg.

22



Trim the flap seam allowance to 3 - 4 mm (1/8"). Place the scissors at 45° to the surface to trim the seam allowance gradually. Press the flap down.

23



2,5-3

Edgestitch the flap 5 mm (3/16") away from the attaching seam. Press it. Repeat the process for the opposite cargo pocket (steps 7-23).

24



2,5-3,5



7

Place the pant front and back panels along the inseams, right side inside. Serge them. While serging, pull the upper part of the back panel inseam to equalize it with the front inseam edge. Press the seam allowances towards the front. Repeat the process for the opposite pant leg.



25



2,5-3,5



7

Insert the left pant leg into the right one with right sides together. Pin along the crotch seam placing the inseam allowances in different directions to avoid bulk. Serge it in place. Press the seam allowances towards the left.

26



2,5-3,5



7

Serge the waistband short edges, having pinned the side edge beforehand.

27



Punch 3,5 mm (1/8") holes for the eyelets with a Hole Punch or scissors. Attach the eyelets with the press.

28



Press the seam allowances ends in different directions.

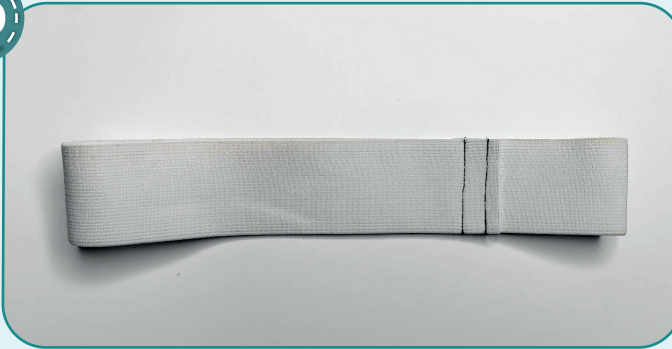
29



Fold the waistband in half, lengthways, wrong side inside and press it.



30



2,5-3

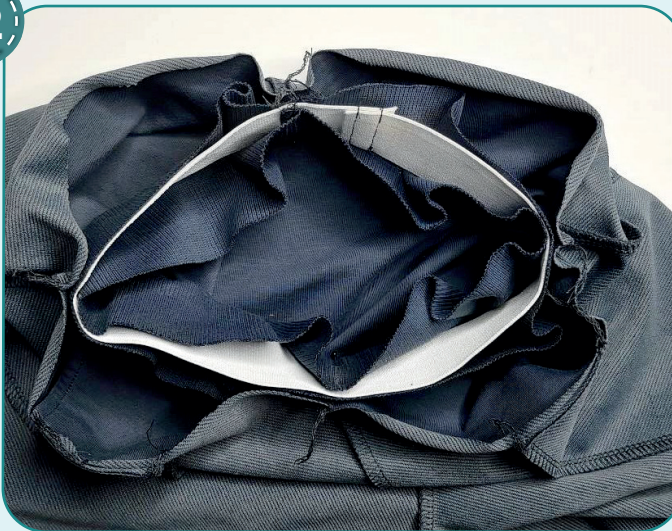
Cut the elastic 35 or 45 mm (1 3/8" or 1 3/4") wide (its length depends on the pants size) and the length indicated on the waistband pattern. Sew the elastic in a ring with a straight or a zig-zag stitch.

31



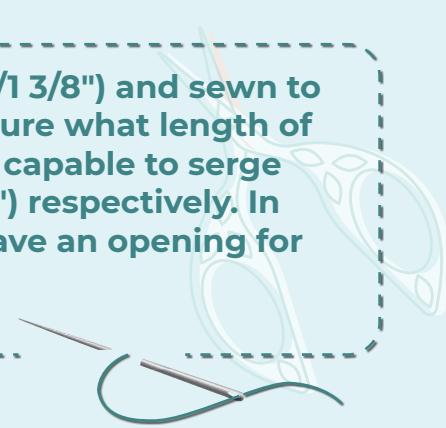
Divide the elastic in quarters and pin at the marks. Place the elastic inside the waistband, align the marks on the elastic with the marks on the waistband and pin at these places. To avoid bulk, do not align the garment side seams and the seam, joining the elastic ends.

32



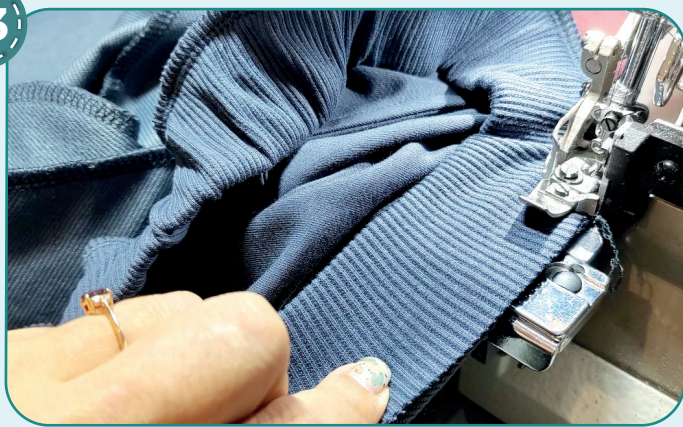
Turn the pants out to the wrong side and place the waistband with elastic to the garment upper edge. Pin the waistband to the pants upper edge, with right sides together, aligning the waistband seam with the garment back crotch seam, waistband center with the front crotch seam and the marks with the side seams.

NOTE. The elastic should be 45 mm (1 3/4") wide (or 35 mm/1 3/8") and sewn to the pants together with the waistband. But if you are not sure what length of the elastic to take, or if you are not sure that your serger is capable to serge such thickness, use elastic 35 mm (1 3/8") wide or 25 mm (1") respectively. In that case, sew the waistband without elastic (be sure to leave an opening for the elastic), then thread the elastic and sew it into a ring.





33

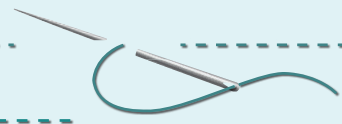


4 2,5-3,5 7

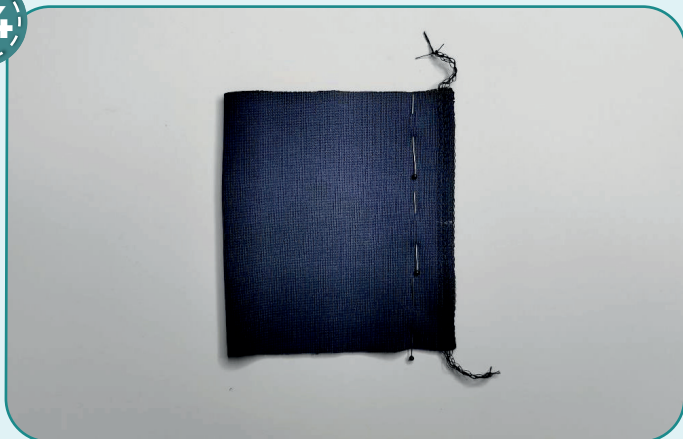
Serge the waistband to the garment. While serging, stretch evenly the elastic, but avoid stretching the garment upper edge. Serge slowly, especially along the pockets. When stretching the elastic, the serger needles should be in the lowest position. Tie the thread tails and hide them into the seam. Press the seam allowances down.



NOTE. It is recommended to try it on, check the fit, length and ease. When fitting, consider the cuffs width. It is also necessary to check if the pants waistband is comfortable to wear.



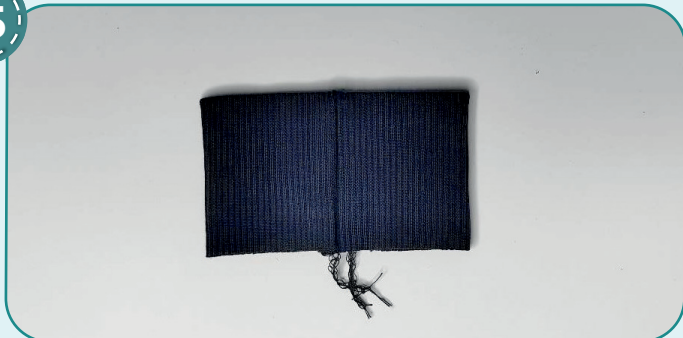
34



4 2,5-3,5 7

With right sides together, fold the cuffs in half, lengthwise, and pin them along the short edges. Serge them.

35



Fold the cuffs in half, wrong side inside, and press them.





36



4

2,5-3,5

7

7

Serge the cuff to the pant leg lower hem, aligning the cuff seam and the pant leg inseam. While serging, evenly stretch the cuff, but avoid stretching the pant leg opening. Repeat the process for the other cuff. Press the seam allowances flat towards the pant legs.

37



Insert the flat draw cord, remove the basting stitches, trim the thread tails and hide them and then press the garment once again. The pants are ready.



ELINA PATYKOVA
ВЫКРОЙКИ

Pants Gang

Thank you for joining my
team and me!
Share your works in my
groups. Hope you will stay
with us for our next project!

